



CEMENT BOND LOG  
GAMMA RAY  
CCL

Company KERR-McGEE OIL & GAS ONSHORE LP  
Well TOTEMS, MARGUERITE UNIT 1  
Field WATTENBERG  
County WELD  
State COLORADO

Company KERR-McGEE OIL & GAS ONSHORE LP  
Well TOTEMS, MARGUERITE UNIT 1  
Field WATTENBERG  
County WELD State COLORADO

Location: API # : 05-123-07900

Other Services

990' FSL & 990' FWL SW/SW  
SEC 20 TWP 1N RGE 67W

|                        |    |           |      |           |
|------------------------|----|-----------|------|-----------|
| Permanent Datum        | GL | Elevation | 5117 | Elevation |
| Log Measured From      | KB | 10'       |      | KB. 5127  |
| Drilling Measured From | KB |           |      | D.F. 5126 |
|                        |    |           |      | G.L. 5117 |

Date 8-12-13

|                        |             |  |  |
|------------------------|-------------|--|--|
| Run Number             | ONE         |  |  |
| Depth Driller          | 8481        |  |  |
| Depth Logger           | 6030'       |  |  |
| Bottom Logged Interval | 6026'       |  |  |
| Top Log Interval       | 150         |  |  |
| Open Hole Size         | 7 7/8       |  |  |
| Type Fluid             | WATER       |  |  |
| Density / Viscosity    | 1.0         |  |  |
| Max. Recorded Temp.    | N/A         |  |  |
| Estimated Cement Top   | 5620' 282   |  |  |
| Time Well Ready        | N/A         |  |  |
| Time Logger on Bottom  | N/A         |  |  |
| Equipment Number       | 5432        |  |  |
| Location               | GREELEY     |  |  |
| Recorded By            | M. JANDREAU |  |  |
| Witnessed By           | B. SMITH    |  |  |

| Borehole Record |     |      |      | Tubing Record |        |      |    |
|-----------------|-----|------|------|---------------|--------|------|----|
| Run Number      | Bit | From | To   | Size          | Weight | From | To |
| ONE             |     | 0    | 216  |               |        |      |    |
| TWO             |     | 0    | 8481 |               |        |      |    |

|                   |       |        |     |        |
|-------------------|-------|--------|-----|--------|
| Casing Record     | Size  | Wgt/Ft | Top | Bottom |
| Surface String    | 8 5/8 |        | 0   | 774    |
| Prot. String      |       |        | 0   | 8481   |
| Production String |       |        |     |        |
| Liner             |       |        |     |        |

<<< Fold Here >>>

All interpretations are opinions based on inferences from electrical or other measurements and we cannot and do not guarantee the accuracy or correctness of any interpretation, and we shall not, except in the case of gross or willful negligence on our part, be liable or responsible for any loss, costs, damages, or expenses incurred or sustained by anyone resulting from any interpretation made by any of our officers, agents or employees. These interpretations are also subject to our general terms and conditions set out in our current Price Schedule.

Comments

CORRELATED TO CASING PATCH AT 5909'

THANK YOU FOR USING WARRIOR ENERGY SERVICES!!!!

| Sensor | Offset (ft) | Schematic | Description | Len (ft) | OD (in) | Wt (lb) |
|--------|-------------|-----------|-------------|----------|---------|---------|
|        |             |           |             |          |         |         |

| Tool Joint        | Length (ft) | Weight (lb) | OD (in) | Notes  |
|-------------------|-------------|-------------|---------|--|
| HEADVOLT          | 16.25       |             |         |  |
| IntTemp           | 14.83       |             |         |  |
| WVFS3FT           | 11.58       |             |         |  |
| WVFCAL            | 11.58       |             |         |  |
| WVFS1             | 11.58       |             |         |  |
| WVFS2             | 11.58       |             |         |  |
| WVFS3             | 11.58       |             |         |  |
| WVFS4             | 11.58       |             |         |  |
| WVFS5             | 11.58       |             |         |  |
| WVFS6             | 11.58       |             |         |  |
| WVFS7             | 11.58       |             |         |  |
| WVFS8             | 11.58       |             |         |  |
| WVF5FT            | 10.58       |             |         |  |
| CNLSC             | 6.00        |             |         |  |
| CNSSC             | 5.17        |             |         |  |
| CCL               | 3.64        |             |         |  |
| GR                | 0.90        |             |         |  |
| PTS275            | 2.83        | 2.75        |         |  |
| RBT-Probe (Base)  | 8.92        | 2.75        | 90.00   | Probe Radii Bond Tool with Digital Telemetry |
| CNT-Probe_B (275) | 3.00        | 2.75        | 40.00   | 6 bow centralizer                            |
| GR-Probe (275)    | 4.33        | 2.75        | 30.00   | Probe 2.75"                                  |

Dataset:

totems marguerite unit 1.db: field/well/run1/pass6

Total Length:

19.08 ft

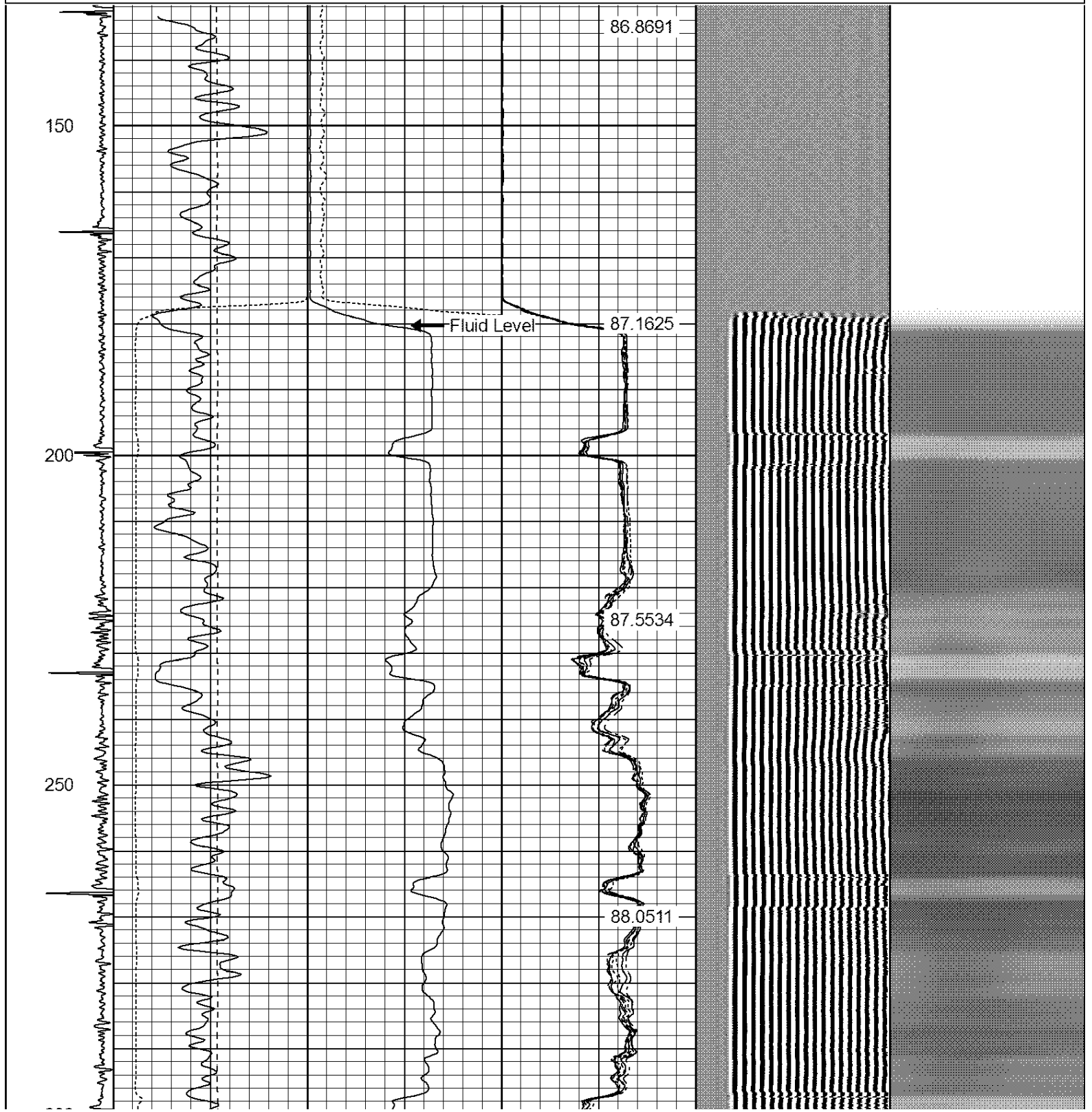
Total Weight:

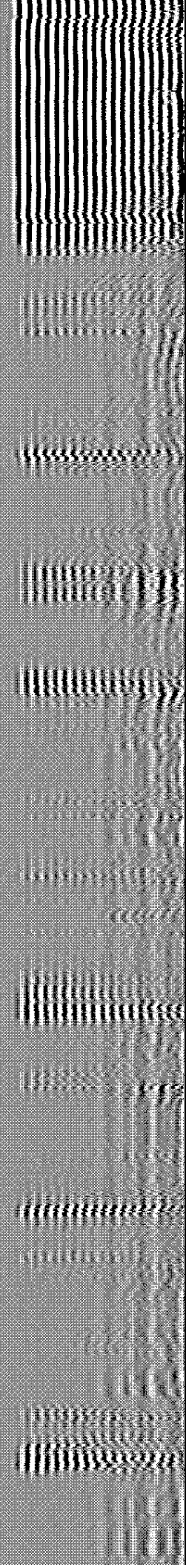
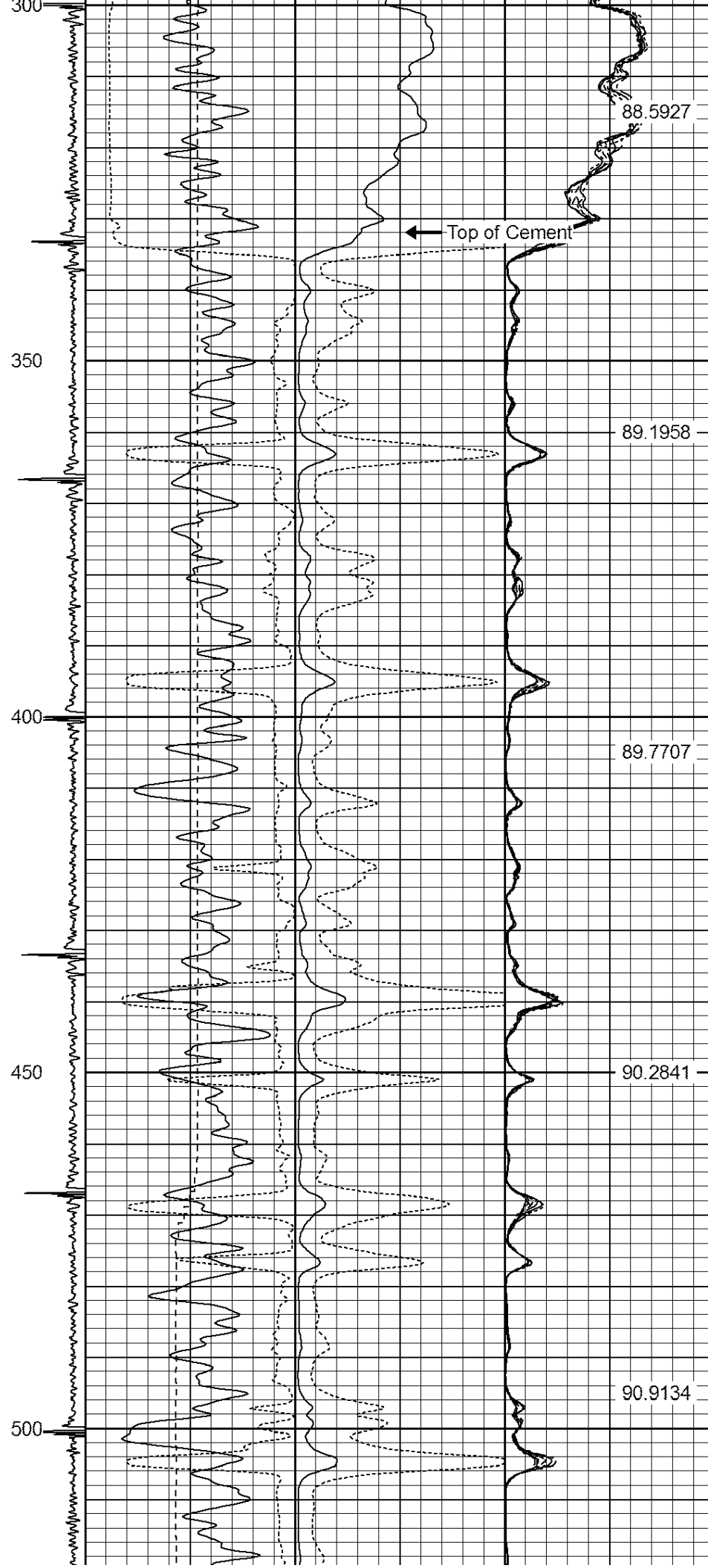
160.00 lb

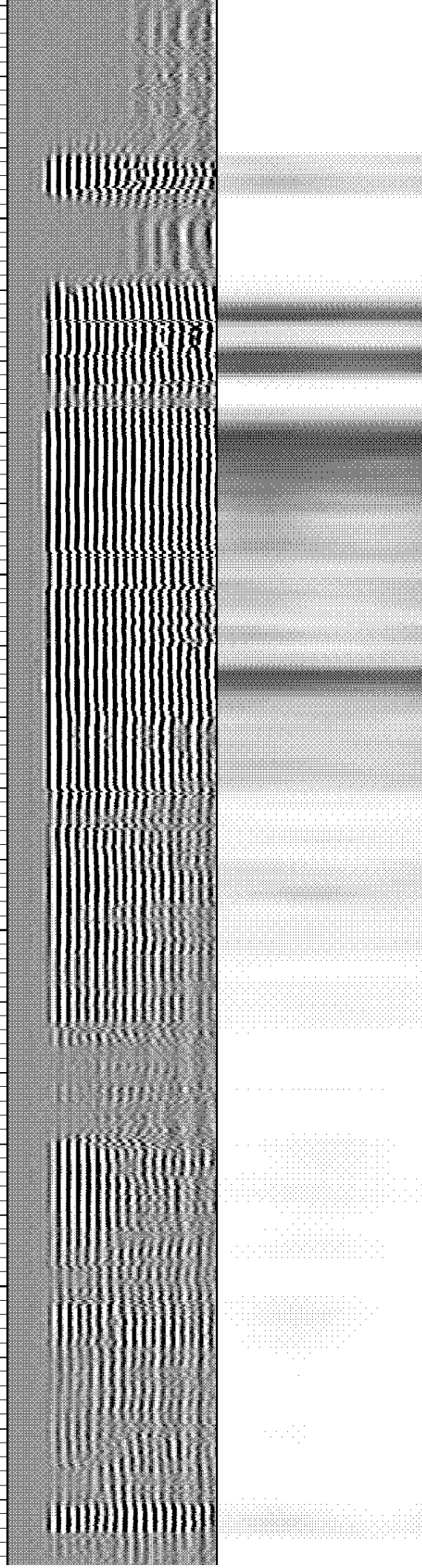
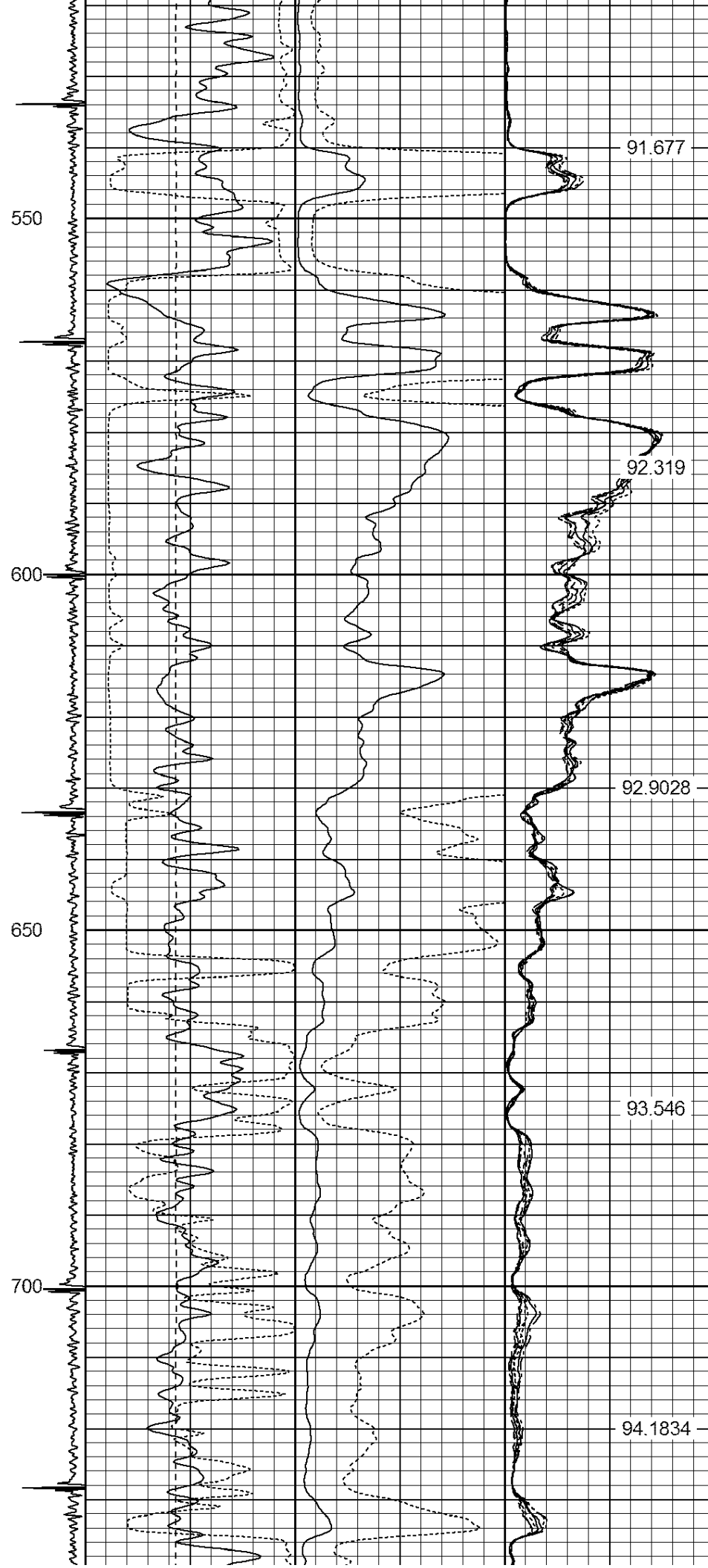
O.D.

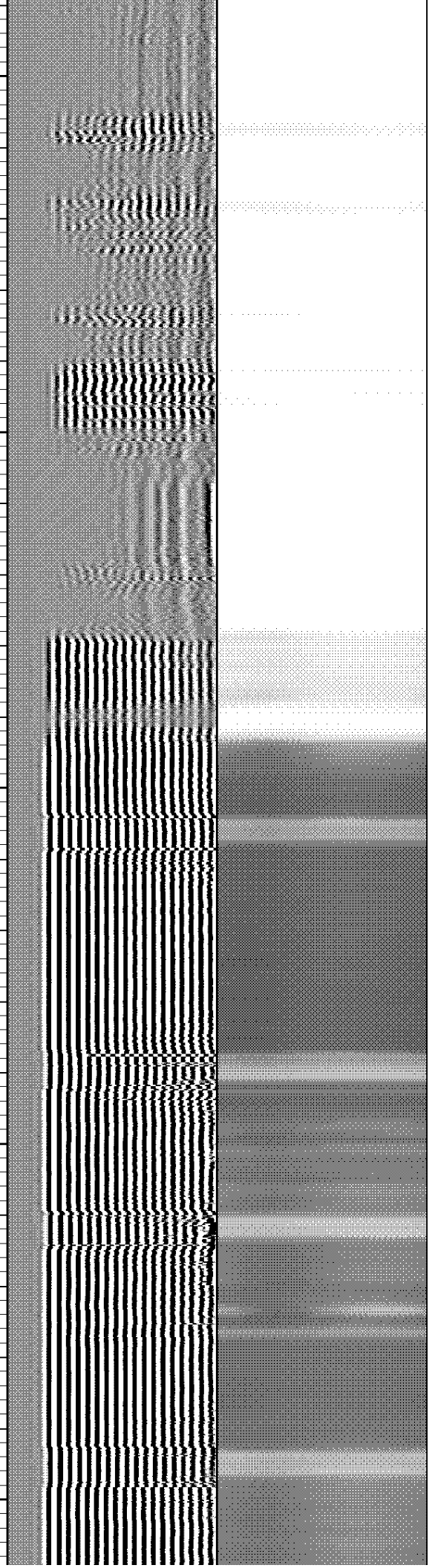
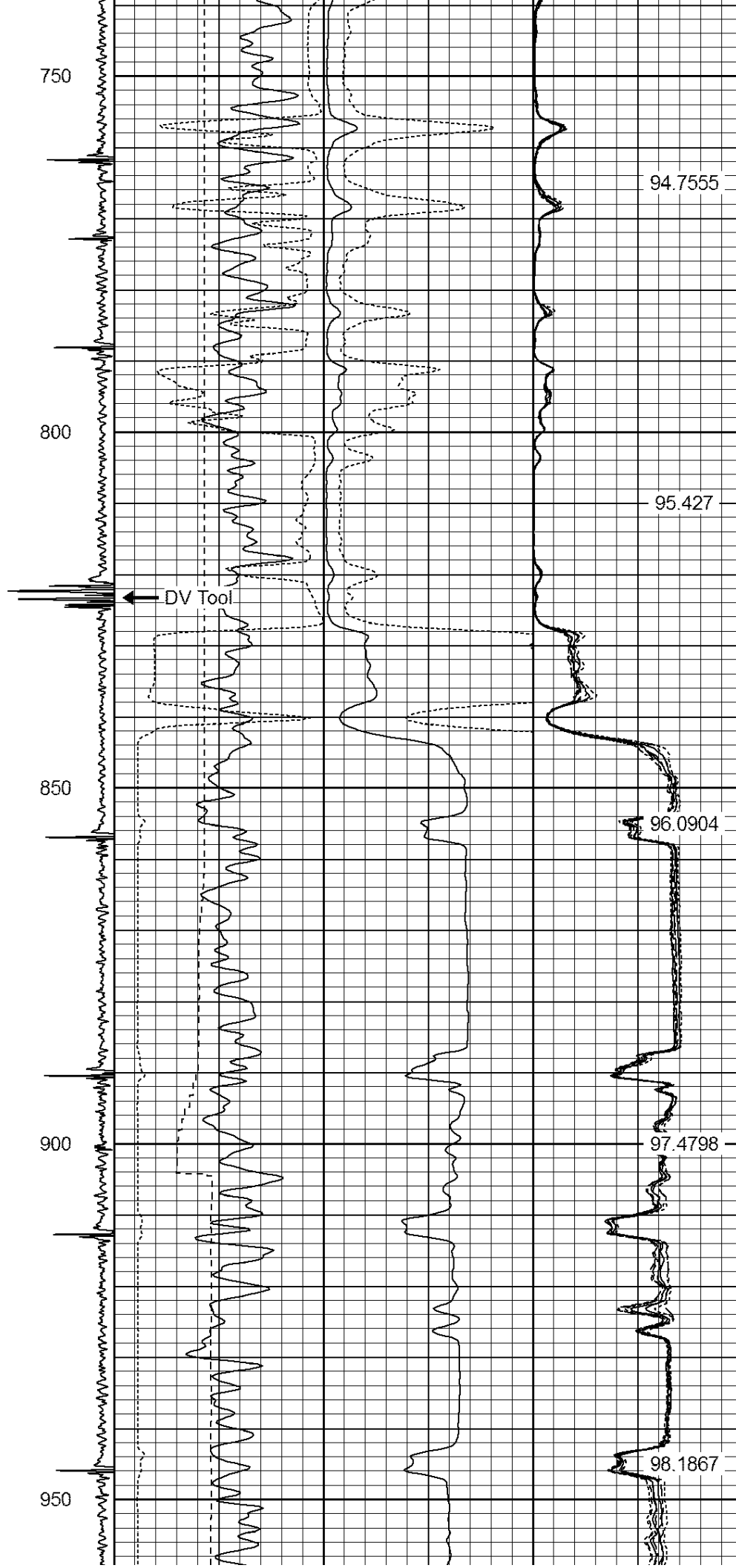
2.75 in

|    |     |   |     |               |     |   |            |     |   |         |     |     |     |      |   |            |     |
|----|-----|---|-----|---------------|-----|---|------------|-----|---|---------|-----|-----|-----|------|---|------------|-----|
| -9 | CCL | 1 | 200 | TT (usec)     | 800 | 0 | AMP (mV)   | 100 | 0 | AMPS1   | 100 | 200 | VDL | 1200 | 1 | Cement Map | 8   |
|    |     |   | 0   | GR (GAPI)     | 200 | 0 | AMPx5 (mV) | 20  | 0 | AMPS2   | 100 |     |     |      | 1 |            | 100 |
|    |     |   | 200 | GR (GAPI)     | 400 |   |            |     | 0 | AMPS4   | 100 |     |     |      |   |            |     |
|    |     |   | 0   | LSPD (ft/min) | 250 |   |            |     | 0 | AMPS5   | 100 |     |     |      |   |            |     |
|    |     |   |     |               |     |   |            |     | 0 | AMPS6   | 100 |     |     |      |   |            |     |
|    |     |   |     |               |     |   |            |     | 0 | AMPS7   | 100 |     |     |      |   |            |     |
|    |     |   |     |               |     |   |            |     | 0 | AMPS8   | 100 |     |     |      |   |            |     |
|    |     |   |     |               |     |   |            |     |   | IntTemp |     |     |     |      |   |            |     |
|    |     |   |     |               |     |   |            |     |   | (degF)  |     |     |     |      |   |            |     |

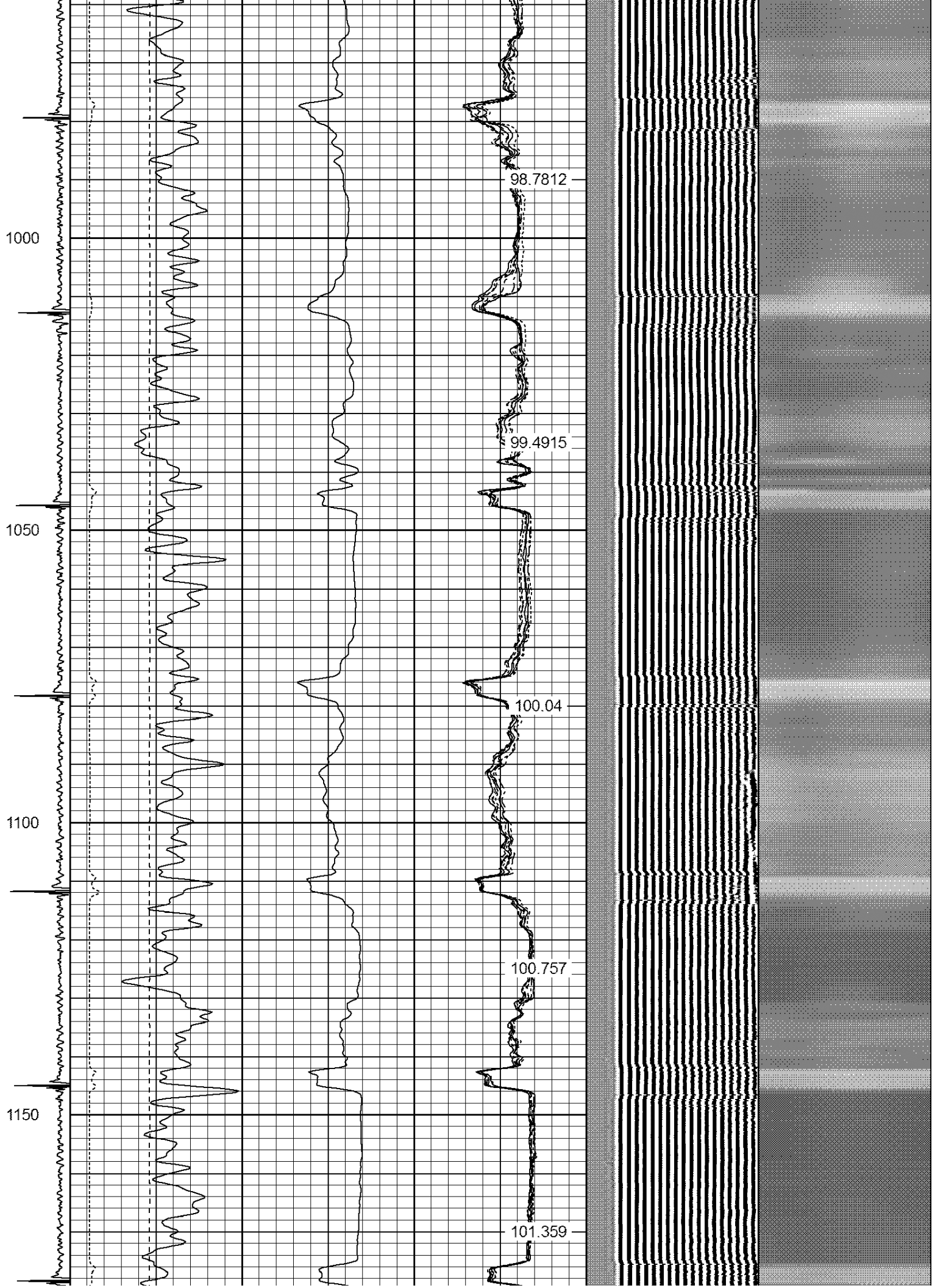












1200

1250

1300

1350

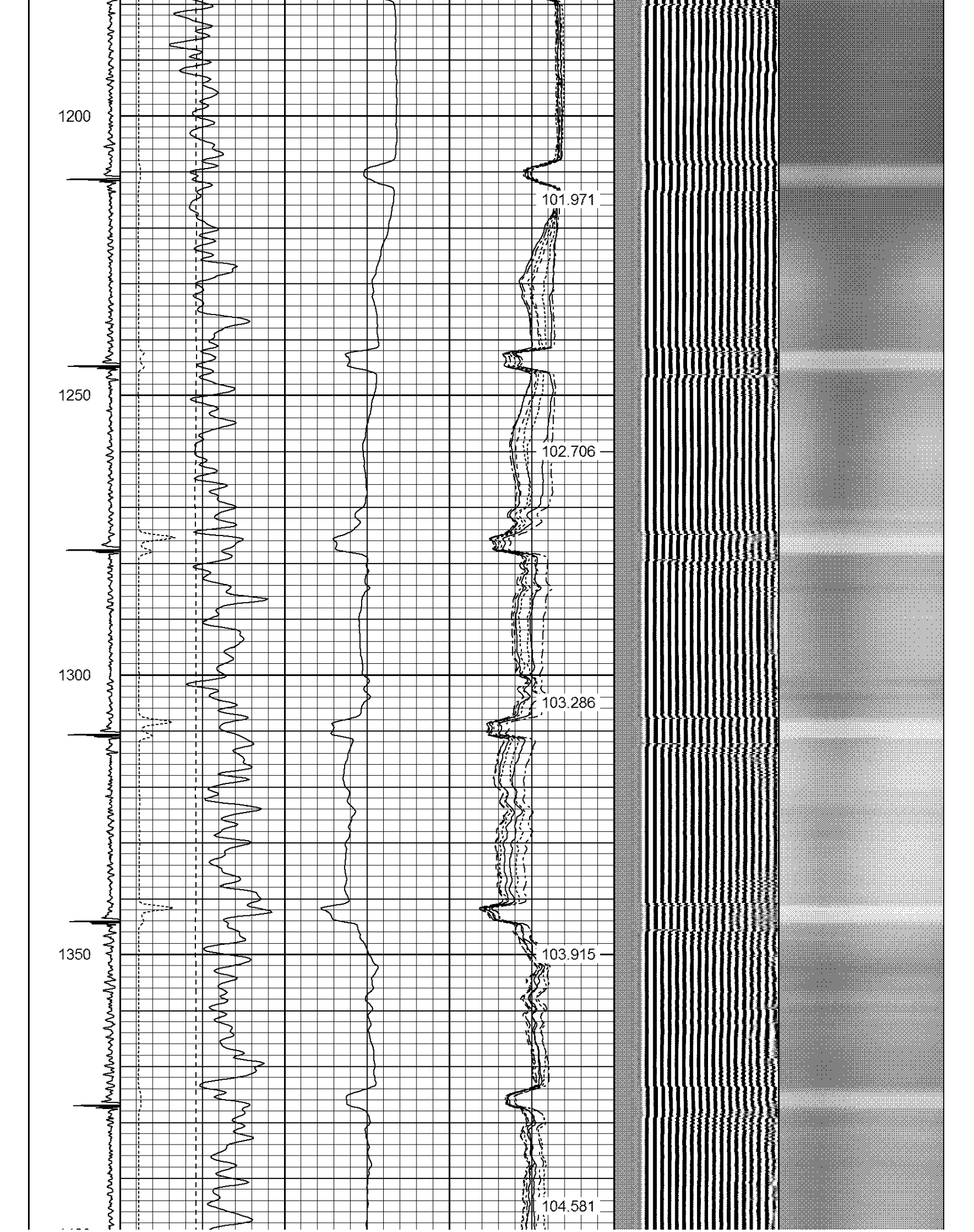
101.971

102.706

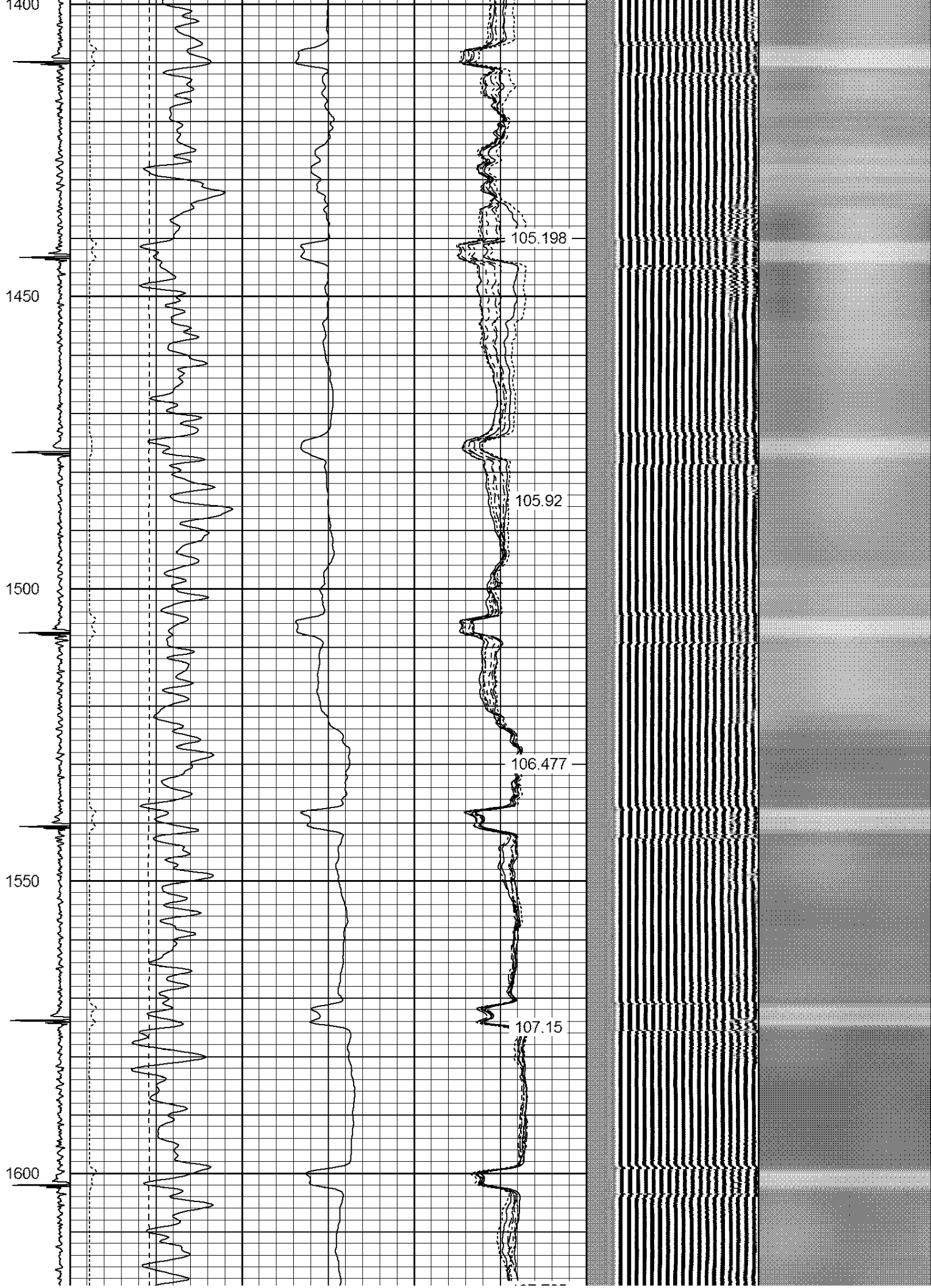
103.286

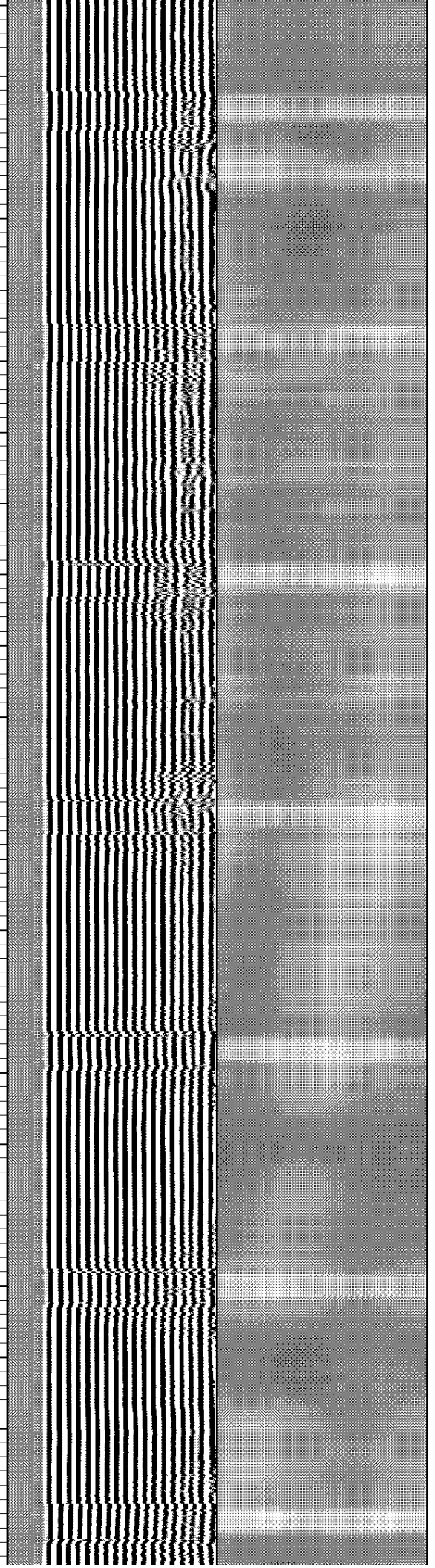
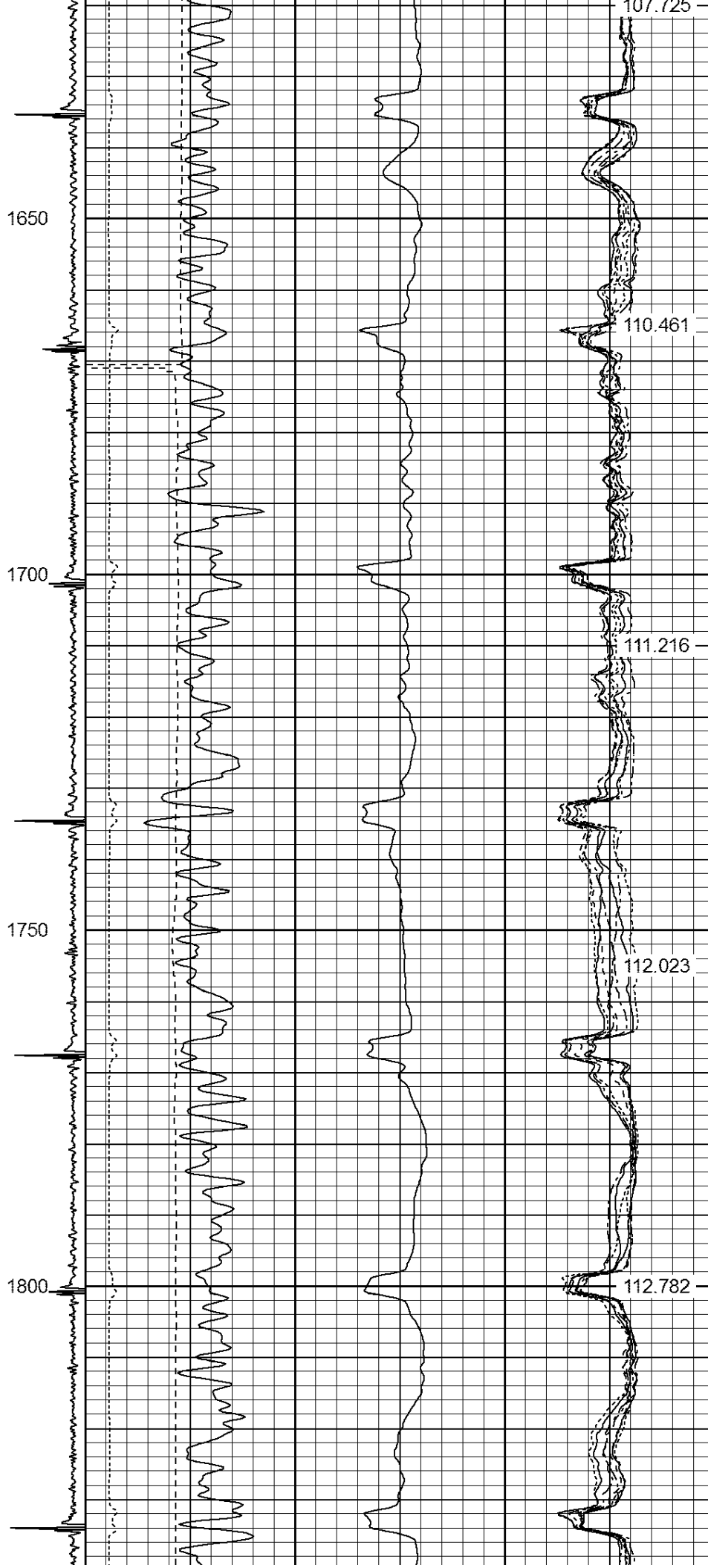
103.915

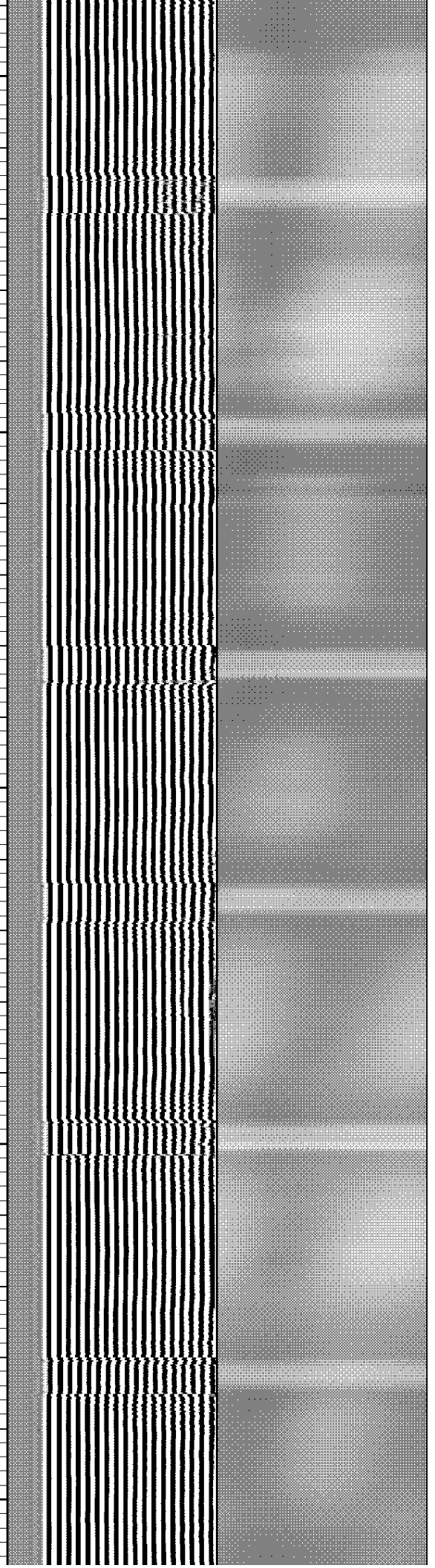
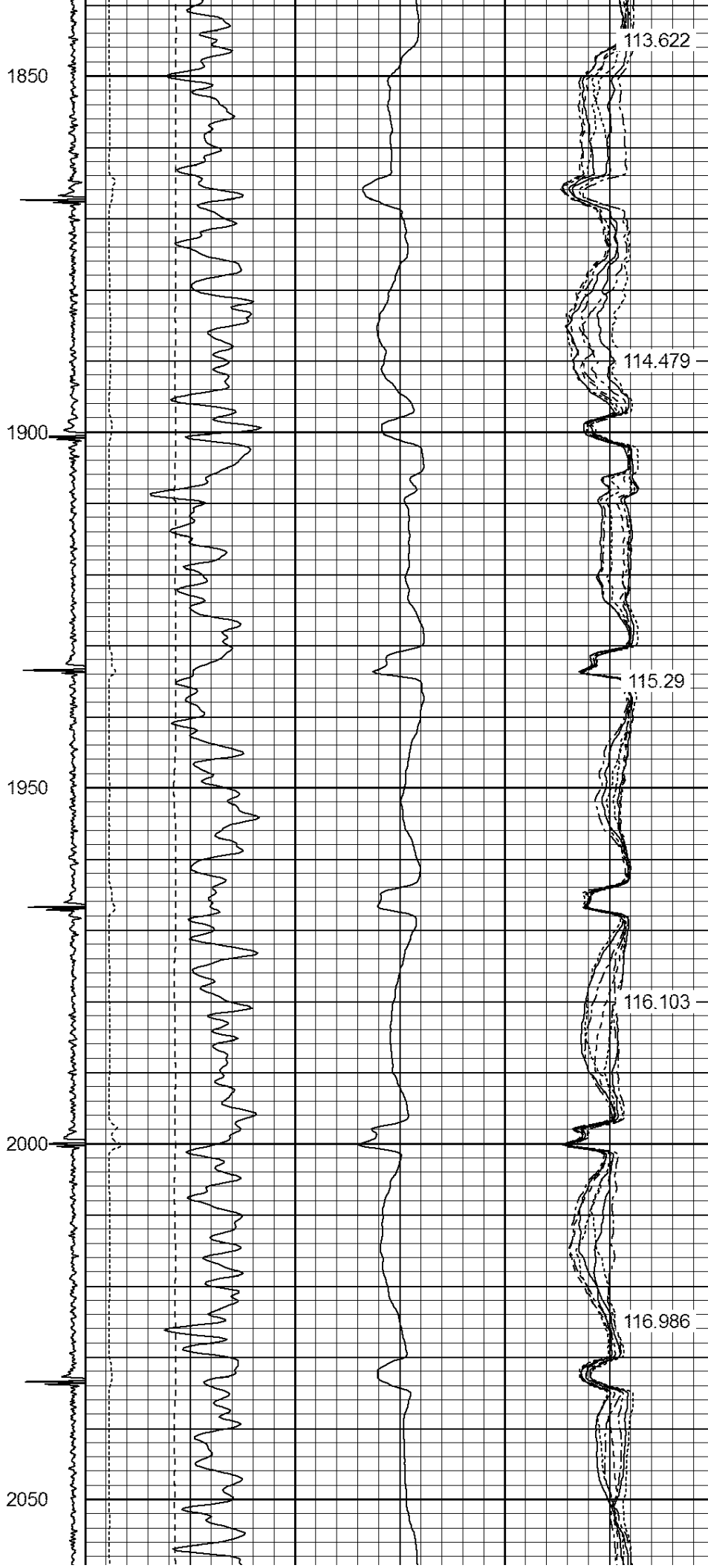
104.581

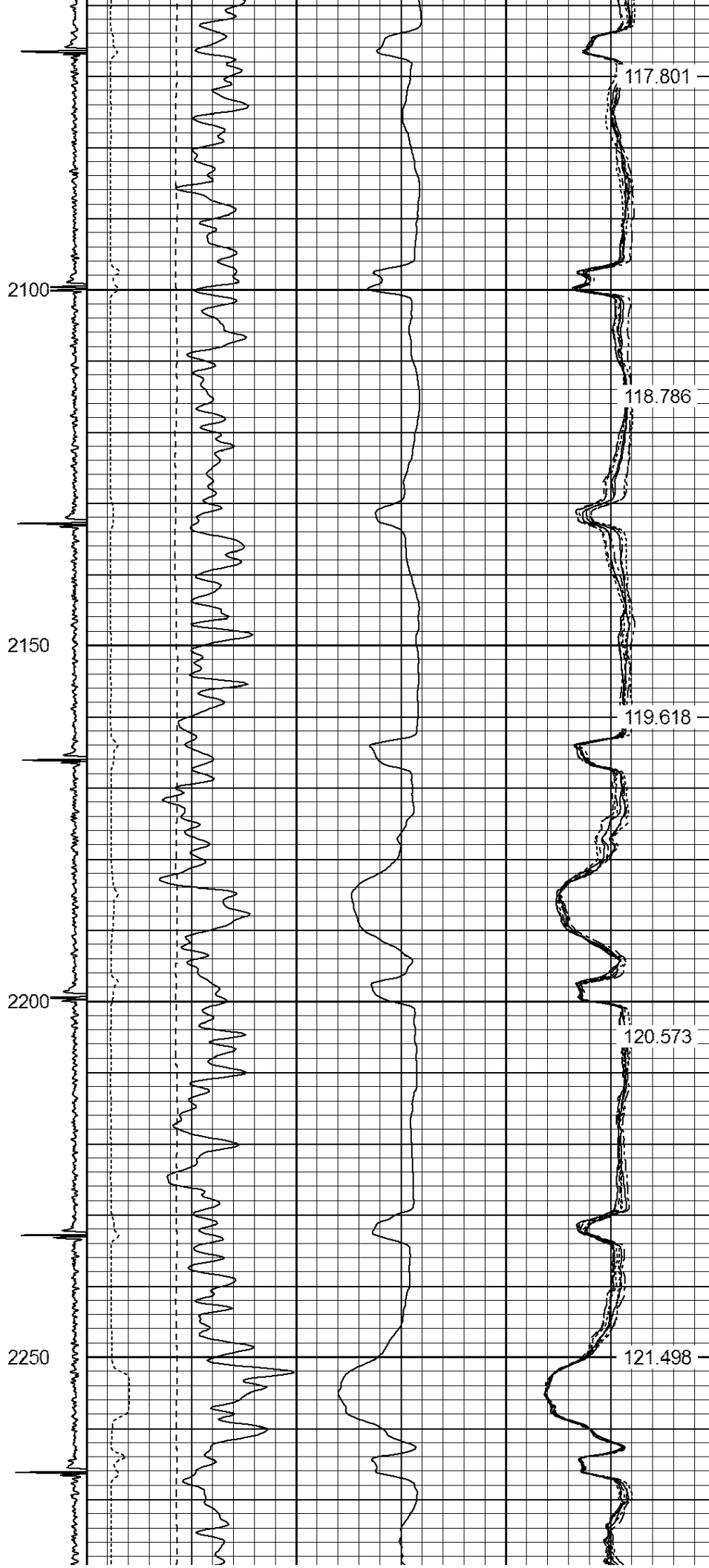




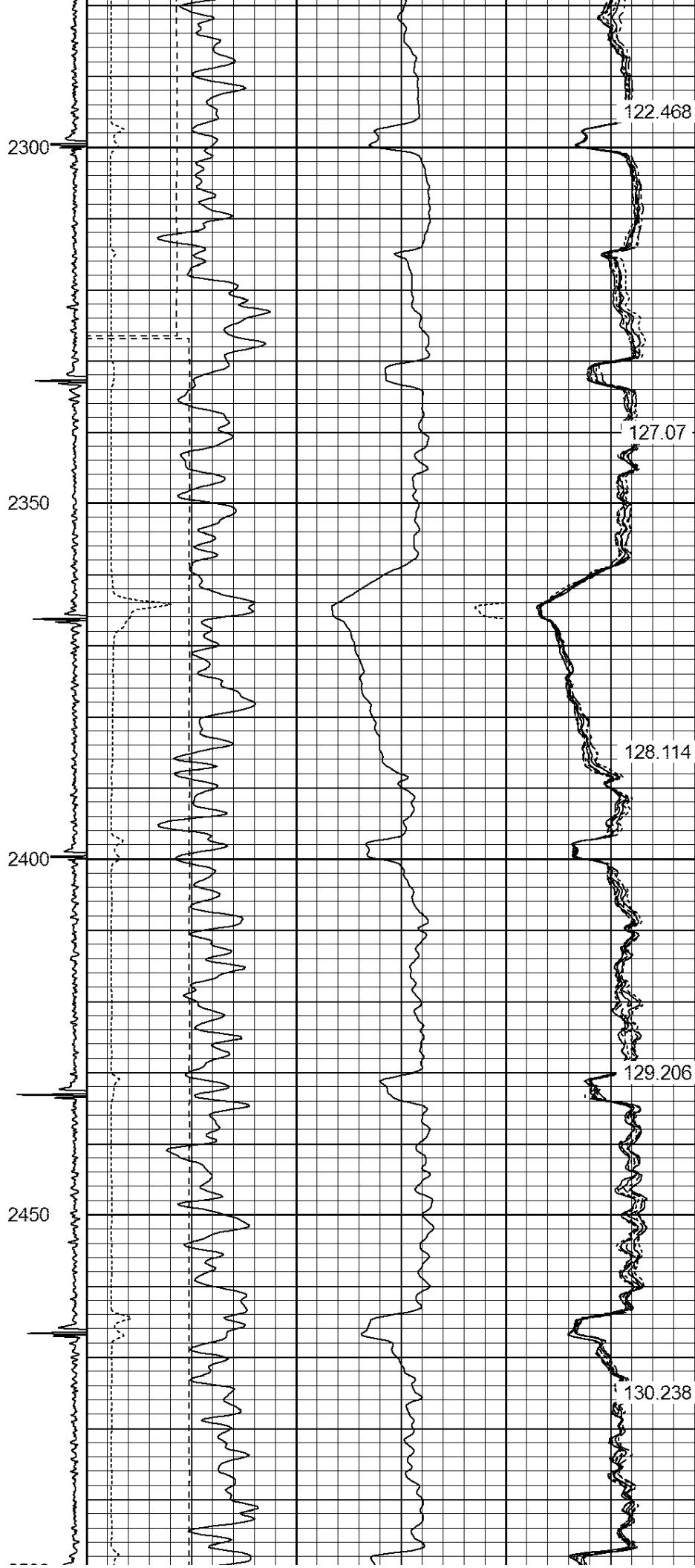






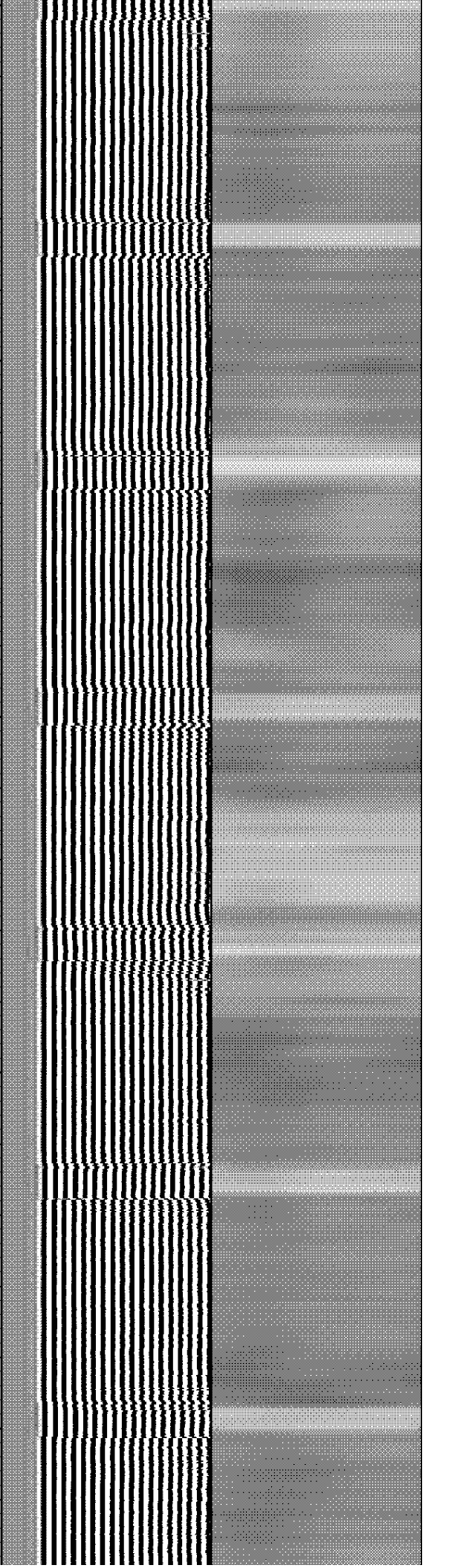
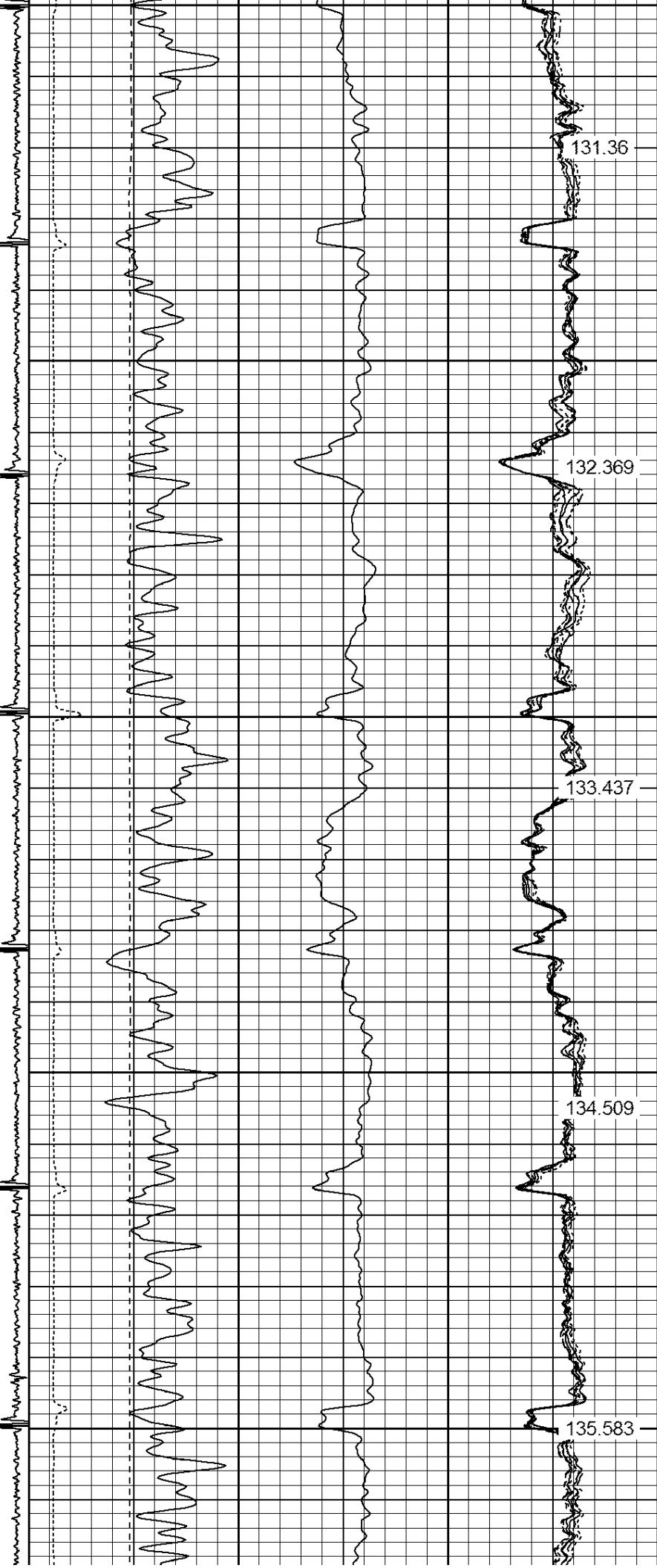








2500  
2550  
2600  
2650  
2700



2750

2800

2850

2900

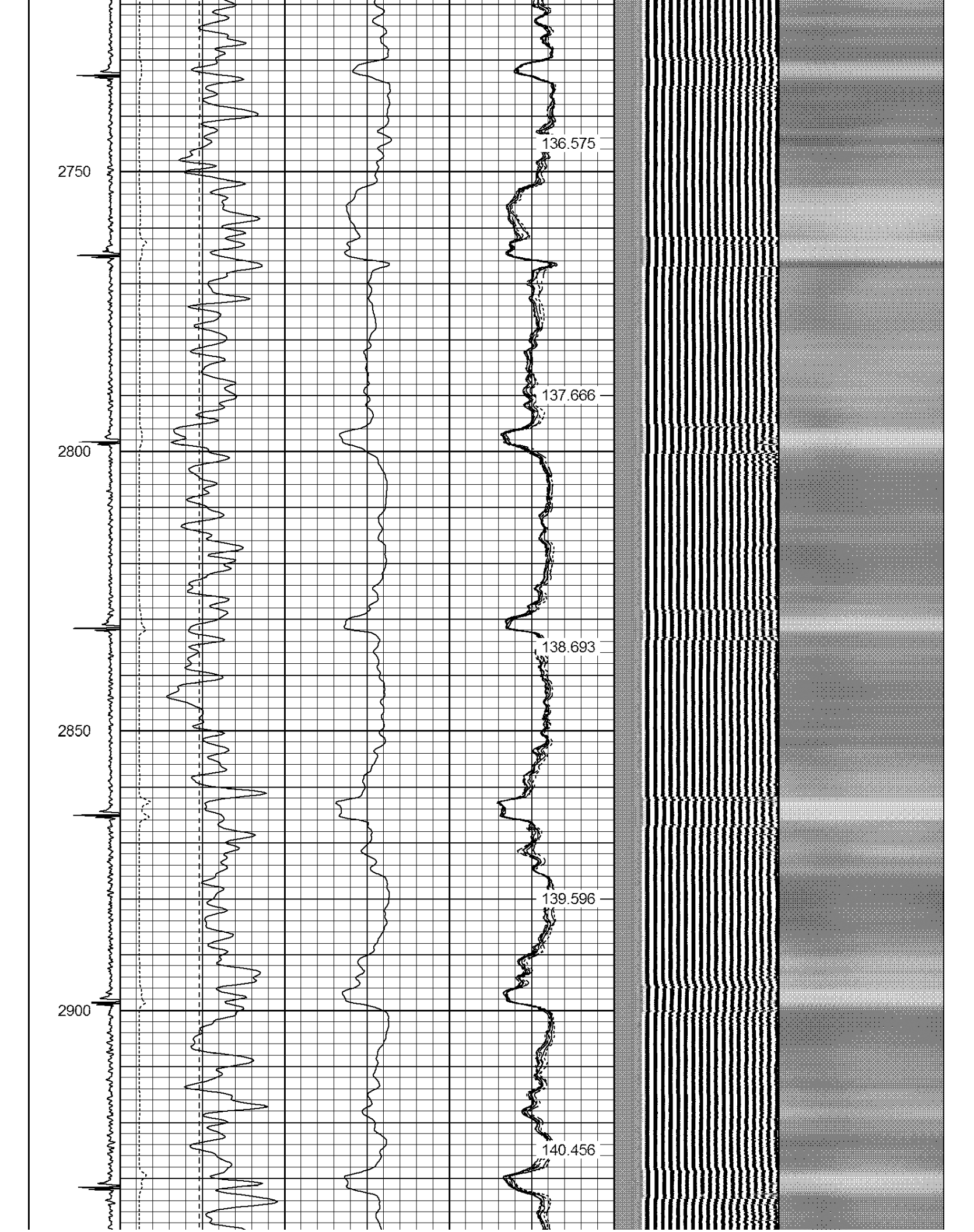
136.575

137.666

138.693

139.596

140.456



2950

3000

3050

3100

3150

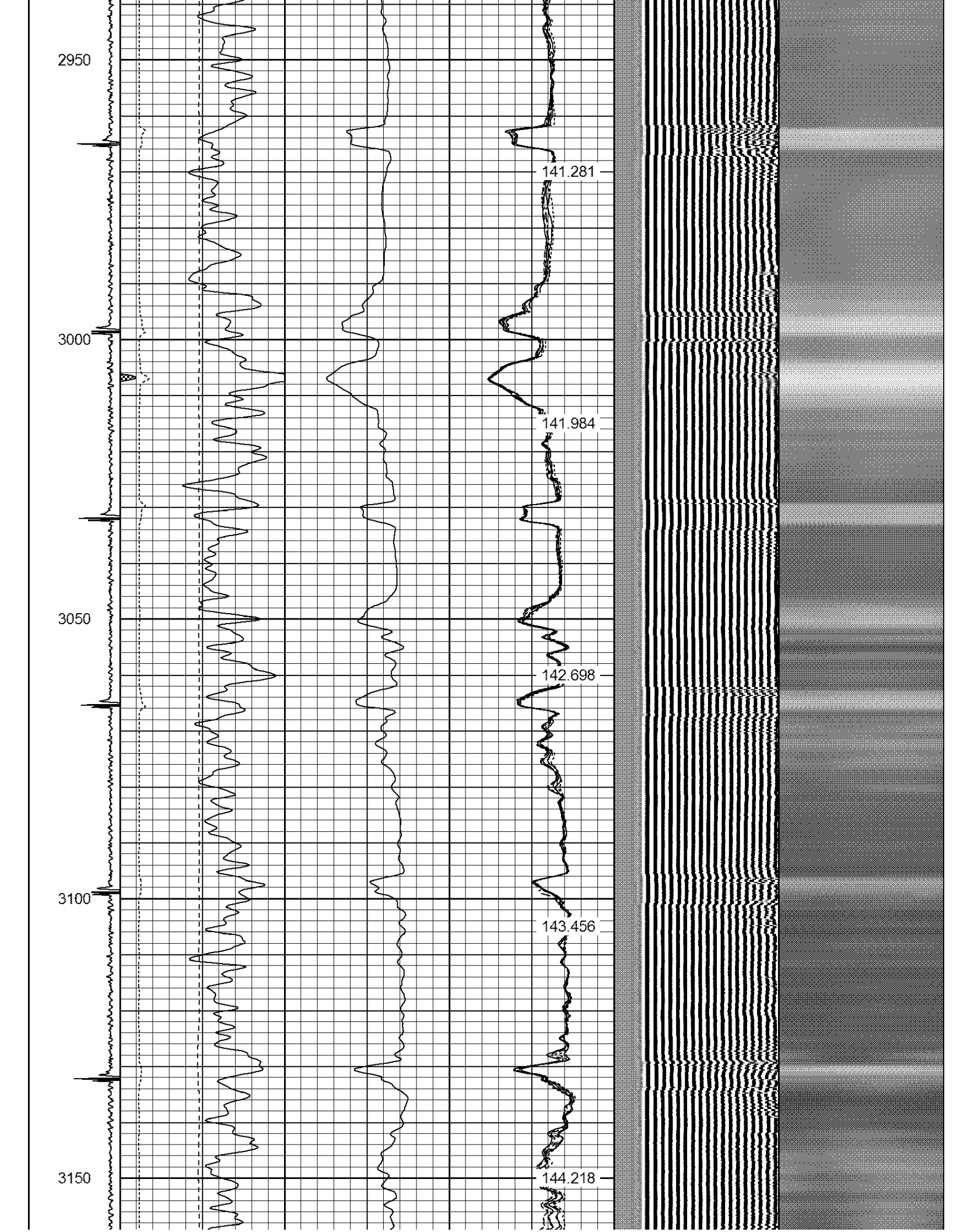
141.281

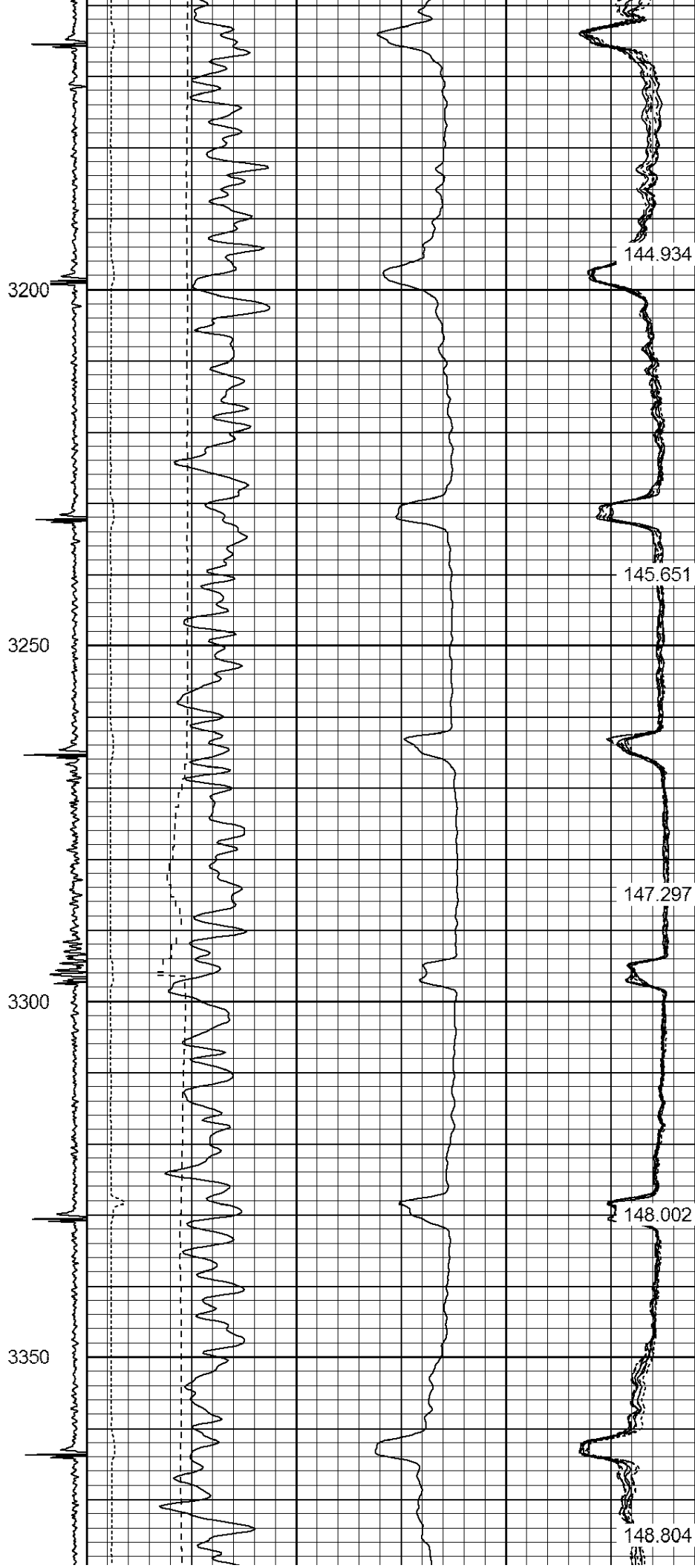
141.984

142.698

143.456

144.218







3400

3450

3500

3550

149.556

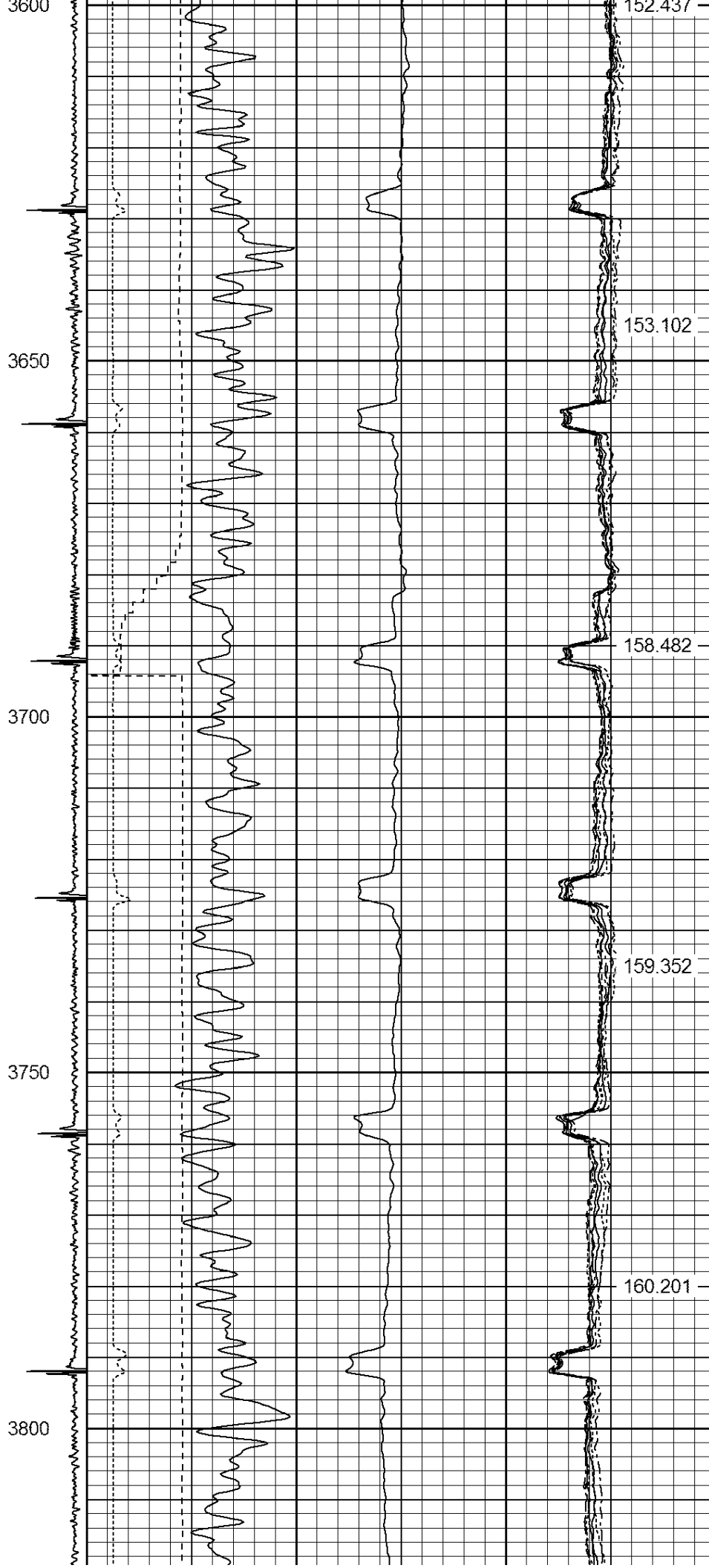
150.356

151.082

151.681







3850

3900

3950

4000

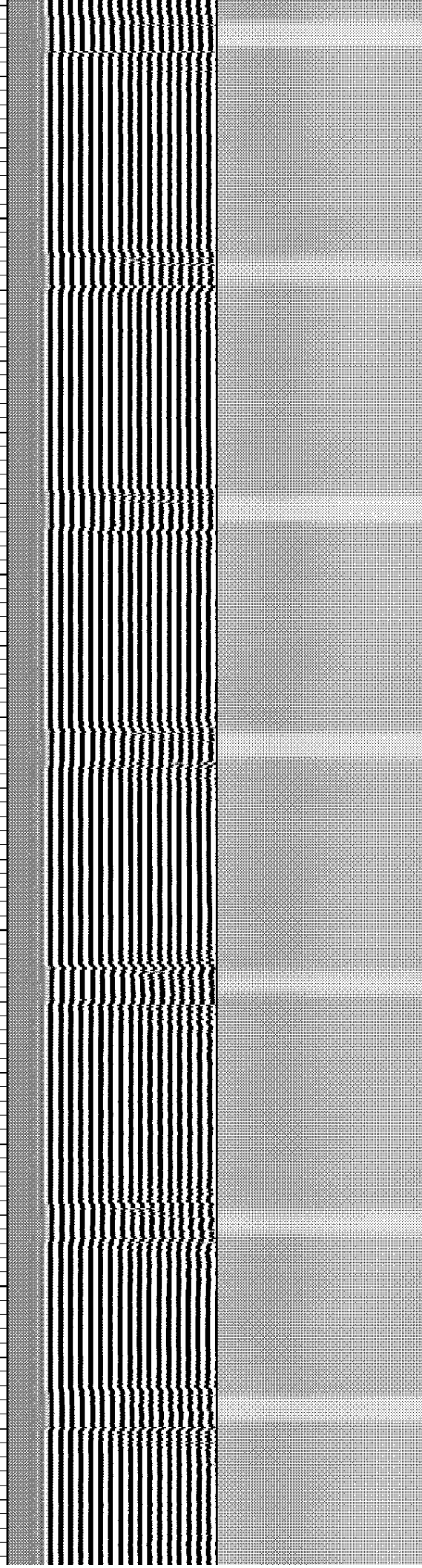
160.951

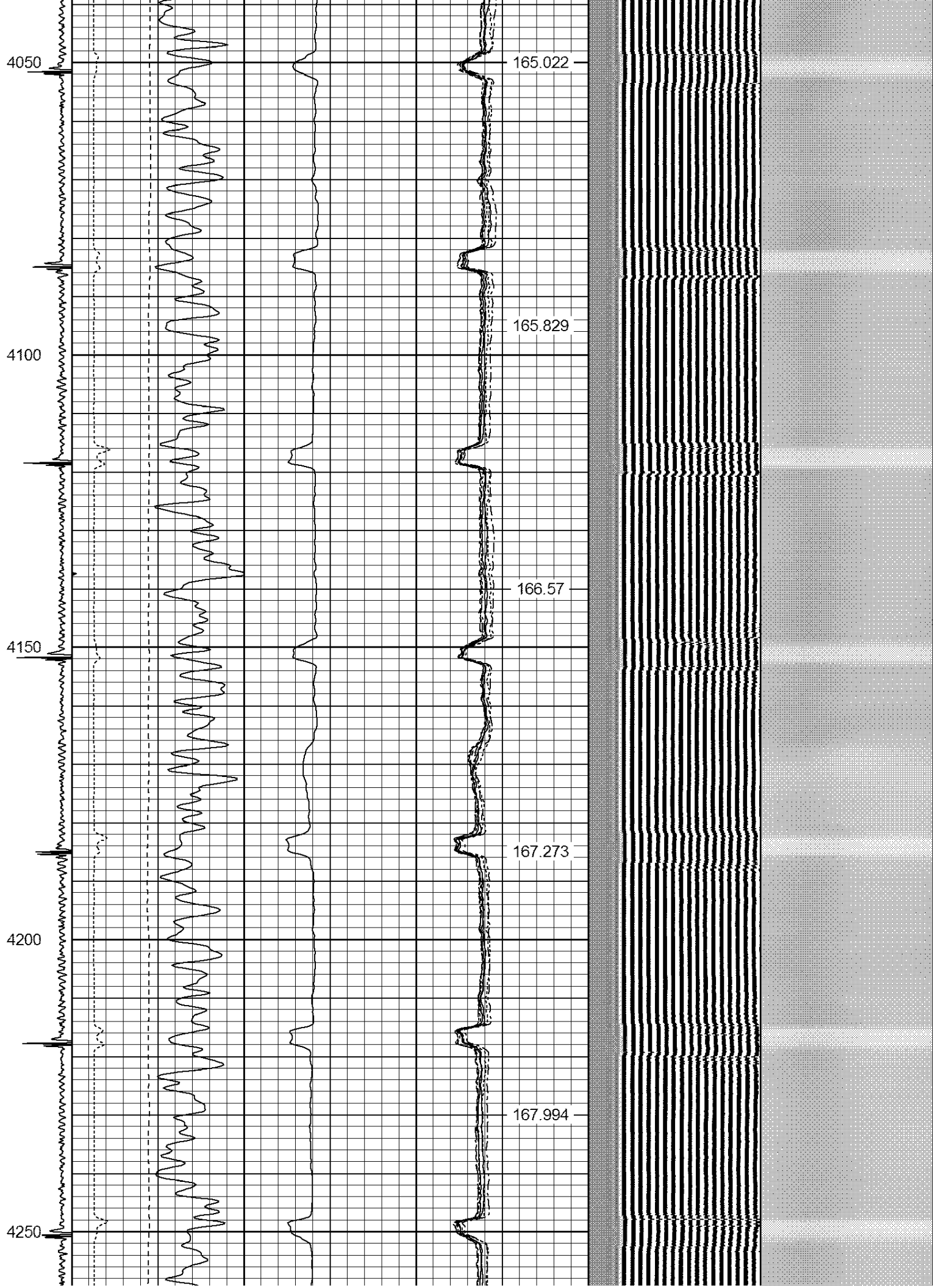
161.806

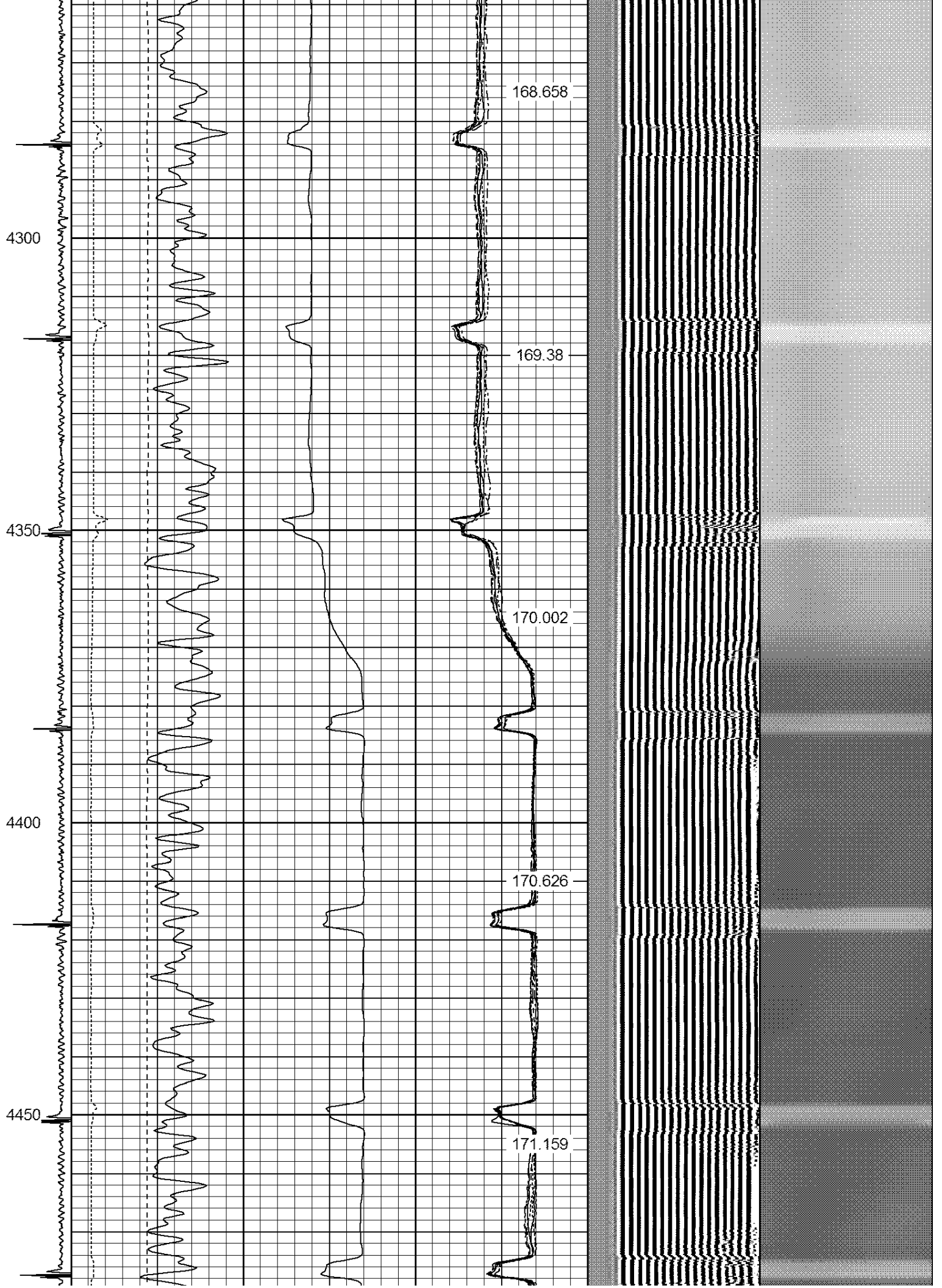
162.709

163.41

164.233









4500

171.79

4550

172.367

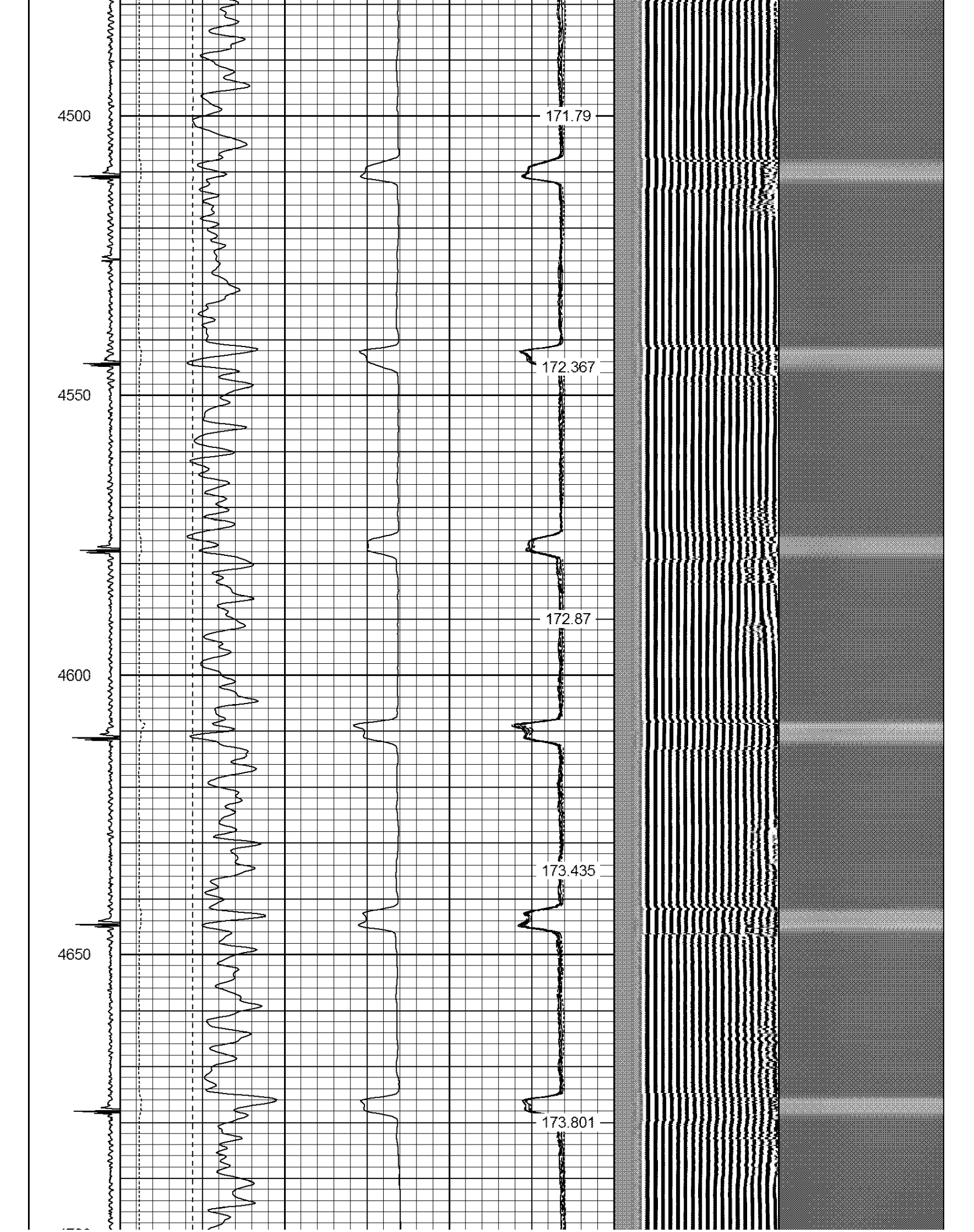
4600

172.87

4650

173.435

173.801





4700

4750

4800

4850

4900

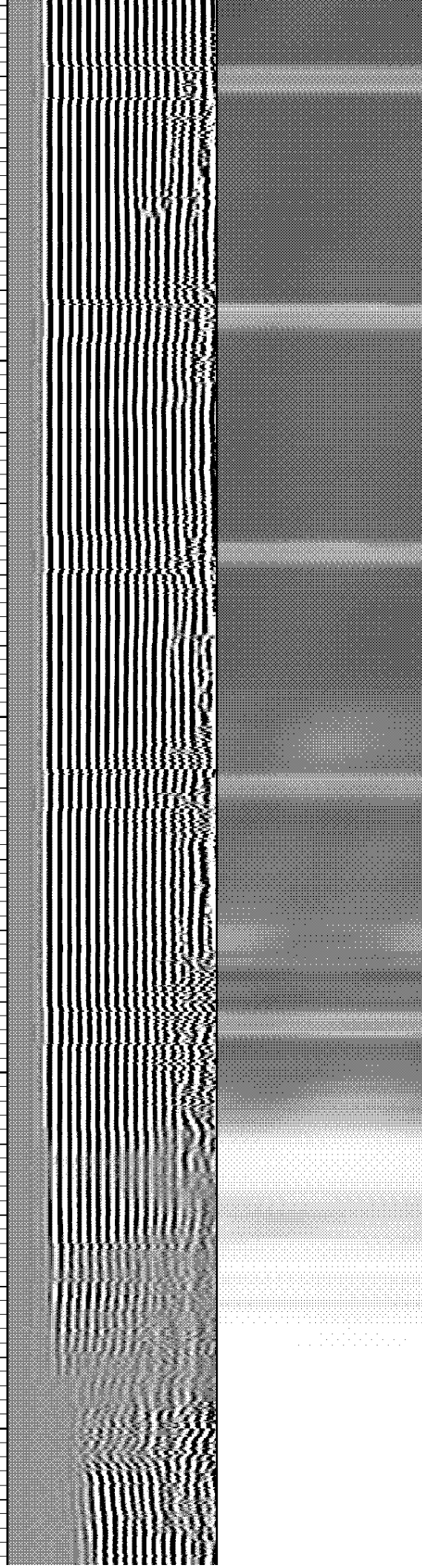
174.274

174.674

175.129

175.433

175.725



4950

176.01

5000

176.282

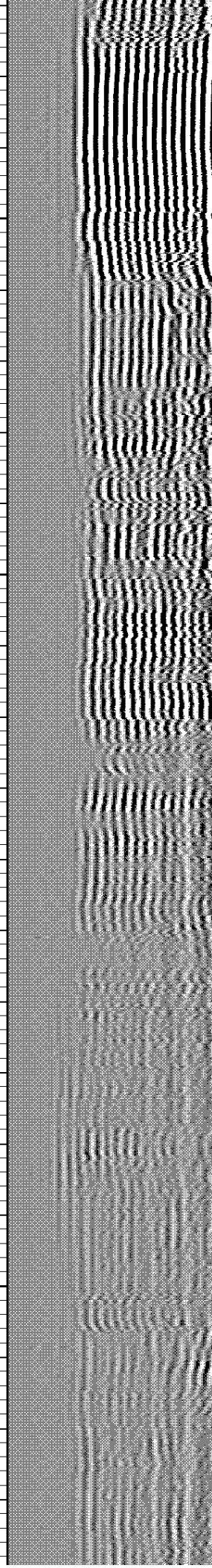
5050

176.491

5100

176.736

176.789



5150

176.93

5200

177.064

5250

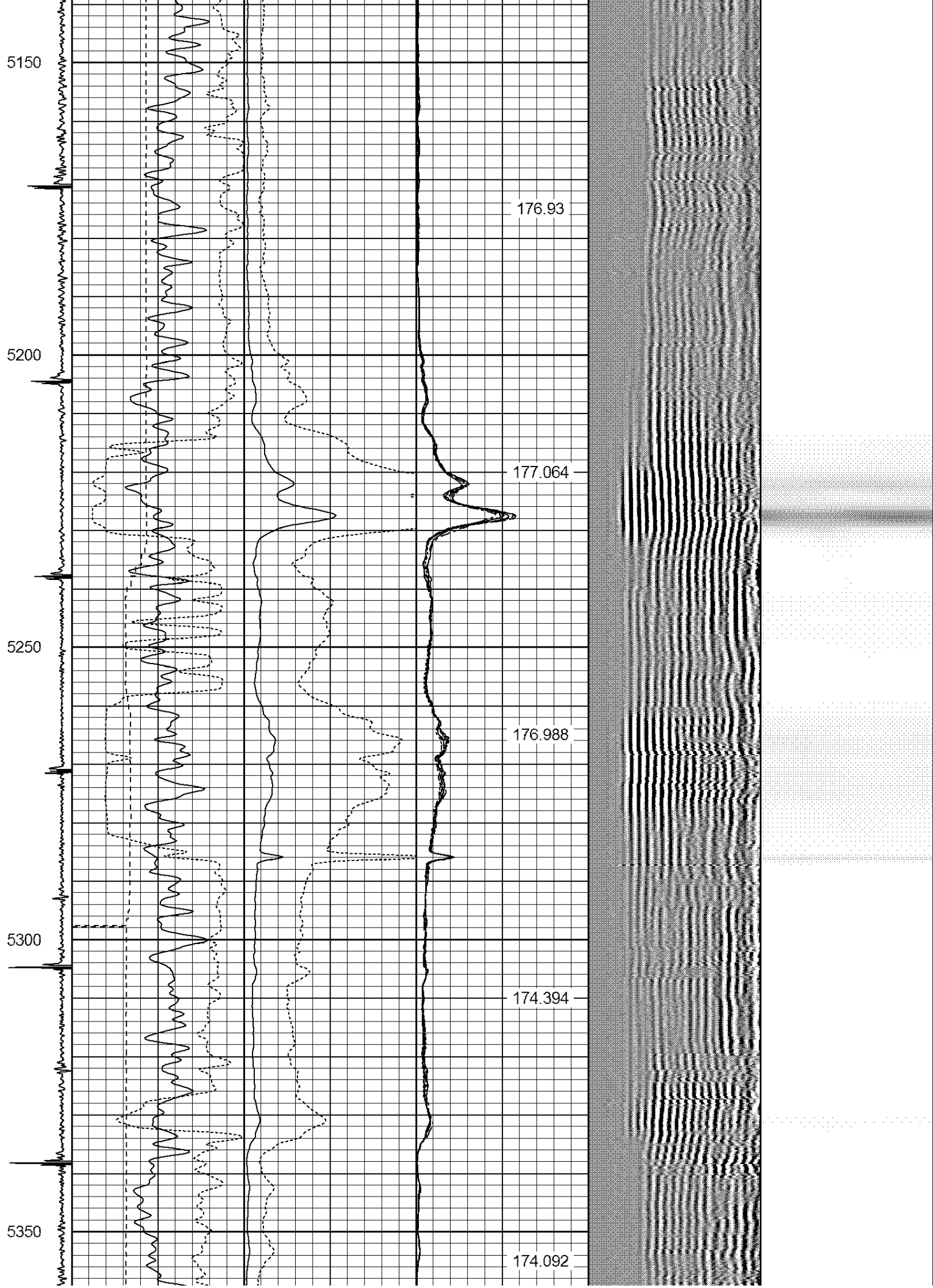
176.988

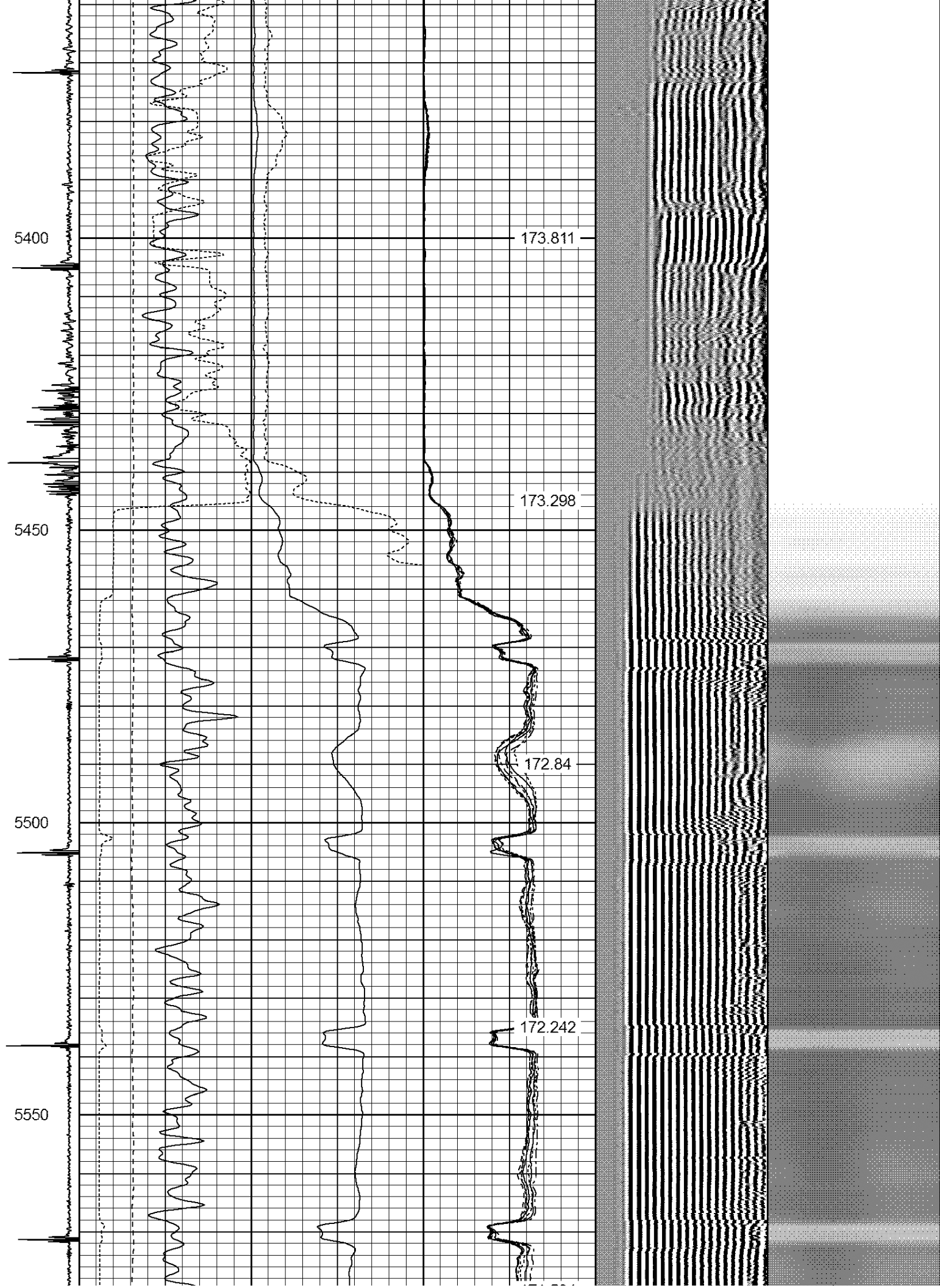
5300

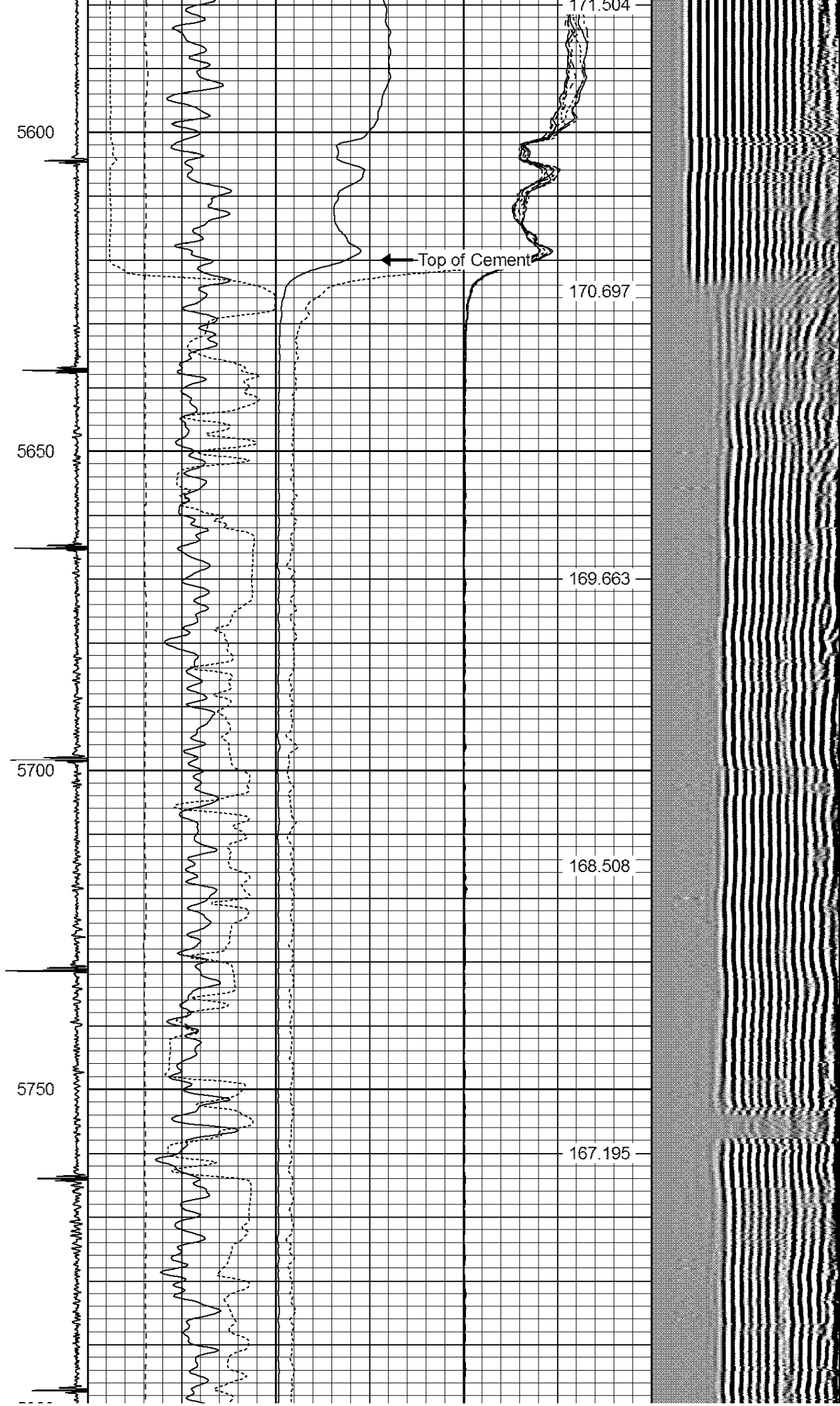
174.394

5350

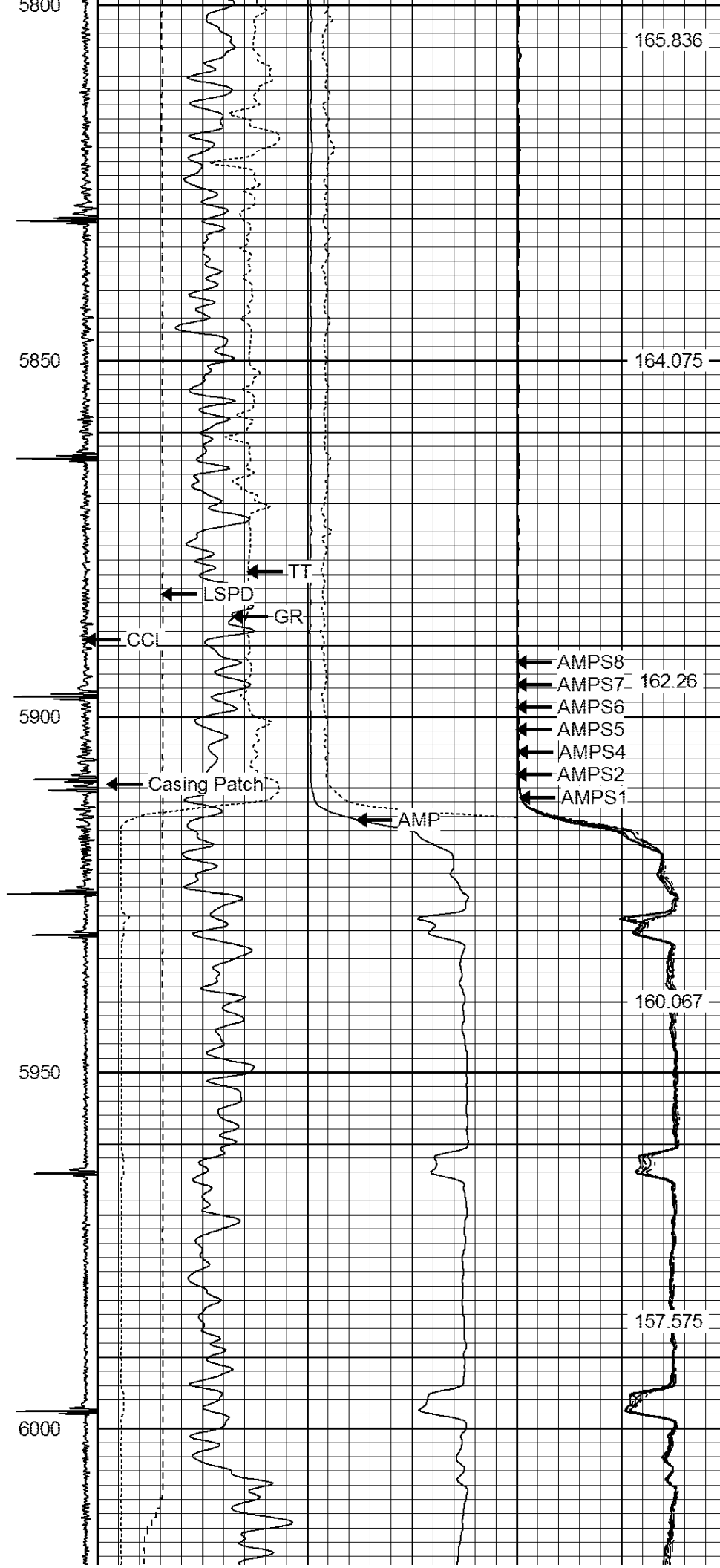
174.092











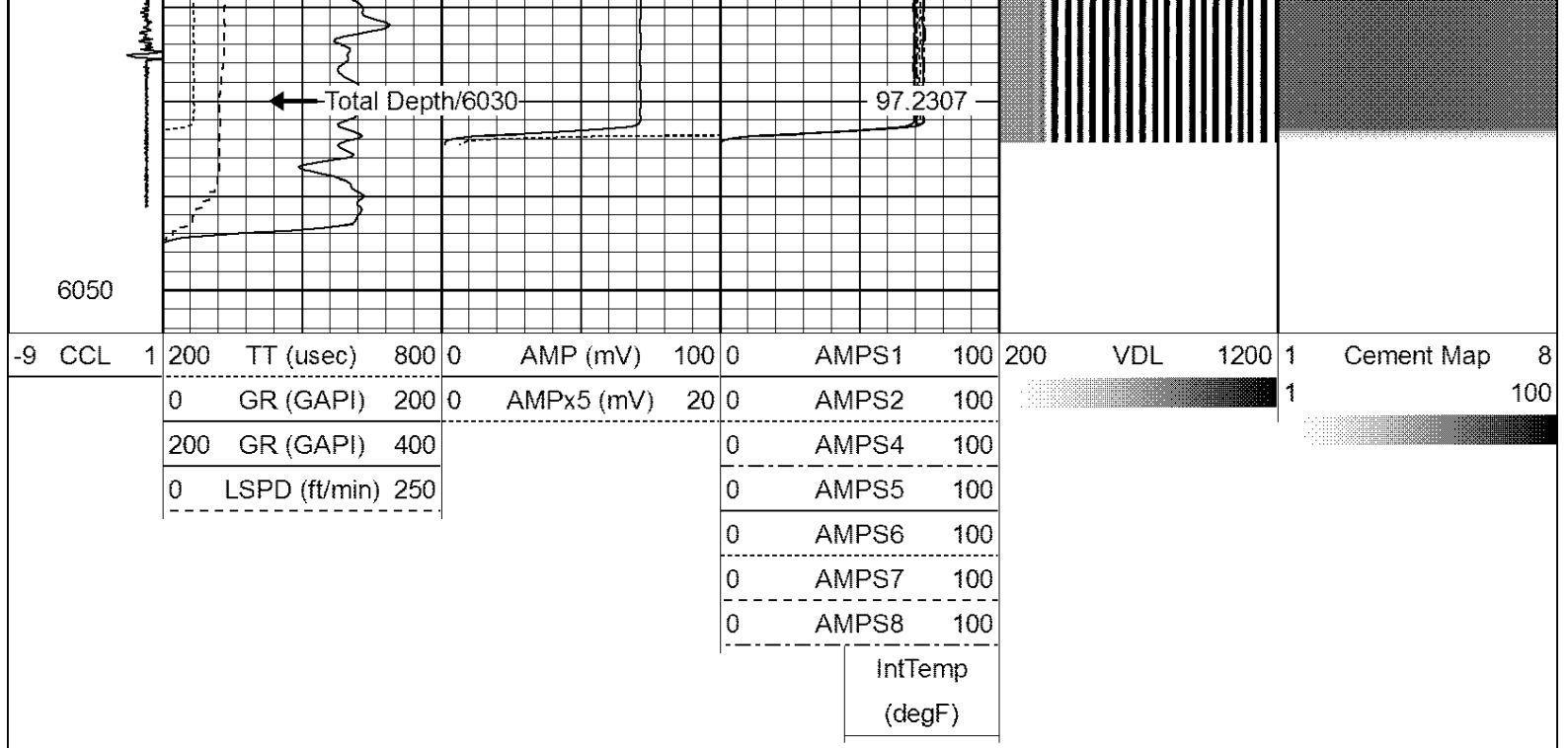
165.836

164.075

162.26

160.067

157.575



**Company** KERR-McGEE OIL & GAS ONSHORE LP

**Well** TOTEMS, MARGUERITE UNIT 1

**Field** WATTENBERG

**County** WELD

**State** COLORADO