



# Weatherford®

**6 3/4 & 4 3/4 in. WeatherfordM/LWD™**  
**Spectral Gamma Ray & Resistivity**  
**5 in. MEASURED DEPTH**  
**RECORDED DATA**  
**FINAL PRINT**

Company: Anadarko  
Well: Farley 30N-23HZ  
Field: Wattenberg  
Rig: XTREME 23  
County: Weld

COMPANY Anadarko  
WELL Farley 30N-23HZ  
FIELD Wattenberg  
RIG XTREME 23  
COUNTY Weld STATE Colorado  
API # 05-123-36306

Location	
Latitude: 40.20493° N	x = 3,208,978 ft
Longitude: 104.75180° W	y = 1,318,380 ft
Mag Decl: 8.59°	
Mag Dip: 66.81°	

Other Services: Spectral Azimuthal Gamma Ray, Directional, and Temperature

Permanent Datum: <u>Mean Sea Level</u>	
Log Measured From: <u>Drill Floor</u>	Elev: <u>4955 ft</u> above perm. datum
Depth Reference: <u>Drillers Tally</u>	Total Depth: <u>11722 ft</u>
Depth Logged: 6689 ft	Runs: 4
Date Logged: 14-Jul-13 to 19-Jul-13	Spud Date: 11-Jul-13

Elevation	
K.B. Top Drive	
G.L. 4939.0 ft	
D.F. 4955.0 ft	
W.D. Land	

Borehole Record			Casing Record			
Hole Size	From	To	Size	Weight	From	To
8.750 in.	909 ft	7565 ft	9.625 in.	53.5 lb/ft	Surface	967 ft
6.125 in.	7565 ft	11722 ft	7.000 in.	26 lb/ft	Surface	7565 ft

Borehole Deviation Record			Mud Record			
Hole Size	Min. Inc.	Max. Inc.	Type	Weight	From	To
8.750 in.	0.14°	85.18°	WBM	8.50 ppG	916 ft	6734 ft
6.125 in.	86.91°	91.94°	WBM	8.50 - 10.20 ppG	6734 ft	7565 ft
			WBM	10.00 - 10.30 ppG	7565 ft	11722 ft

**All interpretations of log data are opinions based on inferences from electrical or other measurements. Weatherford International does not guarantee the accuracy or correctness of any interpretation or recommendation and we shall not be liable or responsible for any loss, cost, damages or expenses incurred or sustained by anyone resulting from any interpretation or recommendation made by any of our employees or agents.**

## RUN SUMMARY

M/LWD Run Number		1	2	3	4			
Bit Size	in.	8.750	8.750	6.125	6.125			
Bit Type		PDC	PDC	PDC	PDC			
Bit TFA	sq.in.	1.660	1.530	1.860	1.860			
Bit Start Depth	ft	916	6734	7565	7930			
Bit End Depth	ft	6734	7565	7930	11722			
Top Log Interval	ft	na	6689	7524	7887			
Bottom Log Interval	ft	na	7565	7930	11722			
Begin Log Time	hrs	na	0:50	13:46	12:14			
Begin Log Date	DD-MMM-YY	na	14-Jul-13	16-Jul-13	17-Jul-13			
End Log Time	hrs	na	21:46	20:14	1:50			
End Log Date	DD-MMM-YY	na	14-Jul-13	16-Jul-13	17-Jul-13			
Drill or Wipe		Drill	Drill	Drill	Drill			
Flow Rate	gal/min	594	545	300	300			
Max AV / CV @ MWD	ft/min	492 / 319	492 / 319	492 / 373	492 / 373			
Min Inc @ Depth	deg @ ft	0.14 @ 5840	7.23 @ 6780	90.56 @ 5840	86.91 @ 11264			
Max Inc @ Depth	deg @ ft	18.83 @ 3187	85.18 @ 7505	18.83 @ 3187	91.32 @ 10325			

MUD DATA								
Depth	ft	6734	7565	7930	11722			
Fluid Type		WBM	WBM	WBM	WBM			
Mud Weight	ppg	8.50	10.20	10.20	10.30			
Plastic Viscosity	cP	1	13	6	12			
Solids / Sand	%	0.7 / 0.01	8.7 / 0.80	8.7 / 0.50	9.7 / 0.20			
NaCl Equiv. Chlorides	ppm	1100	1500	1600	1400			
pH		8	8.7	8.1	8.1			
Oil:Water Ratio	% Vol	0.0 : 100.0	0.0 : 100.0	0.0 : 100.0	0.0 : 100.0			
Rm @ Temperature	ohm-m @ deg F	na	na	1.25	1.25			
Rmc @ Temperature	ohm-m @ deg F	na	na	2.25	2.25			
Rmf @ Temperature	ohm-m @ deg F	na	na	1.15	1.15			
KCl	% Vol	0	0	0	0			
Client Representative		R. McPeters	R. McPeters	R. McPeters	R. McPeters			
WeatherfordLWD Engineer		D. Palmer	D. Palmer	C. Clay	C. Clay			

## EQUIPMENT SUMMARY

M/LWD Run Number	1	2	3	4	
BTR / CDS Serial Number	44702 / 44736	44702 / 44736	na	na	
Battery Serial Number	403715873	403715873	na	na	
Gamma Ray Serial Number	51262	51262	na	na	
CMS Serial Number	1949	1949	na	na	
Pulser Serial Number	47668	47668	na	na	
HEL Serial Number	na	na	NW131789PDS4.75	NW131792PDB4.75	
MFR Serial Number	na	na	NW131788RBBKV4.75	NW131788RBBKV4.75	
SAGR Serial Number	na	na	NW131790JB4.75	NW131790JB4.75	
IDS Serial Number	na	na	NW131806BI	NW131806BI	
<b>Sensor to Bit Offsets / Acquisition Rates</b>					
Directional	ft / sec	37.00 / RT	40.87 / RT	56.51 / RT	56.51 / RT
Gamma Ray	ft / sec	40.65 / 16	44.52 / 16	41.99 / 5	41.99 / 5
Resistivity	ft / sec	na	na	77.70 / 5	77.70 / 5
<b>Other Information</b>					
Total BHA Length	ft	110.73	114.60	114.58	114.79
BHA Assembly Type		Steerable	Steerable	Steerable	Steerable
Stabilizer Location	ft	na	na	30.60	30.60
Stabilizer Location	ft	na	na	106.81	107.02
Run Circulating Time	hr	29.93	19.52	8.61	37.95
Run Drilling Time	hr	22.77	8.15	2.13	18.79

## MUD SUMMARY

Date and Time	Run	Bit Depth	Mud Weight	% K	Rm @ Temp	Rmf @ Temp	Rmc @ Temp	BHCT
13 Jul 13 @ 20:00	01	6734 ft	8.20 ppg	0	na	na	na	170 F
14 Jul 13 @ 20:00	02	7565 ft	10.20 ppg	0	na	na	na	174 F
16 Jul 13 @ 20:00	03	7930 ft	10.20 ppg	0	1.25 ohm-m	1.15 ohm-m	2.25 ohm-m	202 F
17 Jul 13 @ 20:00	04	11722 ft	10.30 ppg	0	1.25 ohm-m	1.15 ohm-m	2.25 ohm-m	240 F

## M/LWD RUN REMARKS

**Run Number: 2 :: RECORDED DATA LOG**

**WFT Services Provided:**

Recorded and Real Time Logging: Gamma Ray and Temperature.

Directional Services: On demand Inclination and Azimuth.

**Borehole and Environmental Correction:**

Hole Size: 8.750 in.

**Gamma Ray:** Hole size, Mud weight, Collar O.D., Collar I.D., and K1 factor.

Mud Weight: 8.50 ppg

**Collar O.D.:** 6.750 in.

Borehole Temperature: 180° F

**Collar I.D.:** 3.250 in.

K1 Factor: 3.180

**Run Number: 3 :: RECORDED DATA LOG**

**WFT Services Provided:**

Recorded and Real Time Logging: Spectral Gamma Ray, Resistivity, Temperature.

Directional Services: On demand Inclination and Azimuth.

**Borehole and Environmental Correction:**

Hole Size: 6.125 in.

**Gamma Ray:** Corrected for mud weight, hole size and KCl concentration.

Mud Weight: 10.20 ppg

**Resistivities:** Corrected for borehole temperature, hole size, drilling fluid resistivity and dielectric correction.

Borehole Temperature: 202° F

Drilling Fluid Resistivity: 0.495 ohm-m

KCl Concentration: 0%

**Run Number: 4 :: RECORDED DATA LOG**

**WFT Services Provided:**

Recorded and Real Time Logging: Spectral Gamma Ray, Resistivity, Temperature.

Directional Services: On demand Inclination and Azimuth.

**Borehole and Environmental Correction:**

Hole Size: 6.125 in.

**Gamma Ray:** Corrected for mud weight, hole size and KCl concentration.

Mud Weight: 10.30 ppg

**Resistivities:** Corrected for borehole temperature, hole size, drilling fluid resistivity and dielectric correction.

Borehole Temperature: 210° F

Drilling Fluid Resistivity: 0.495 ohm-m

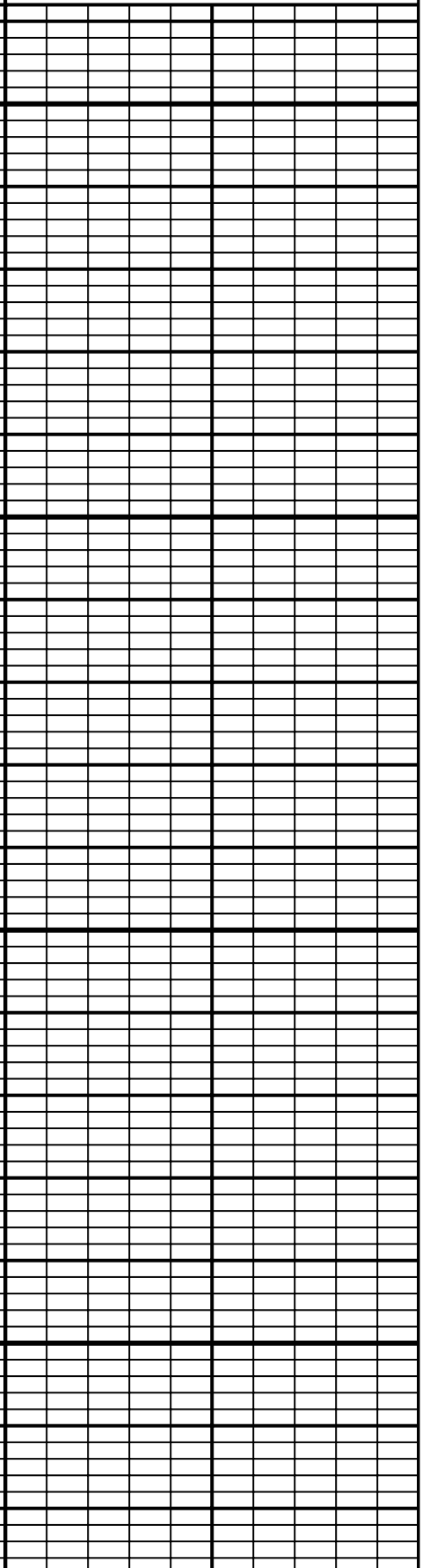
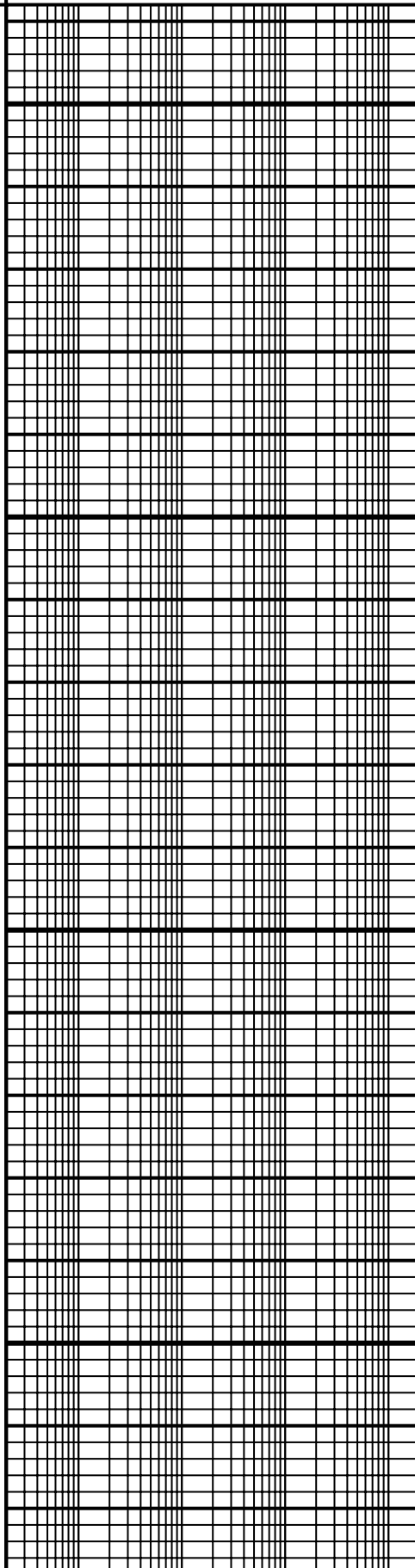
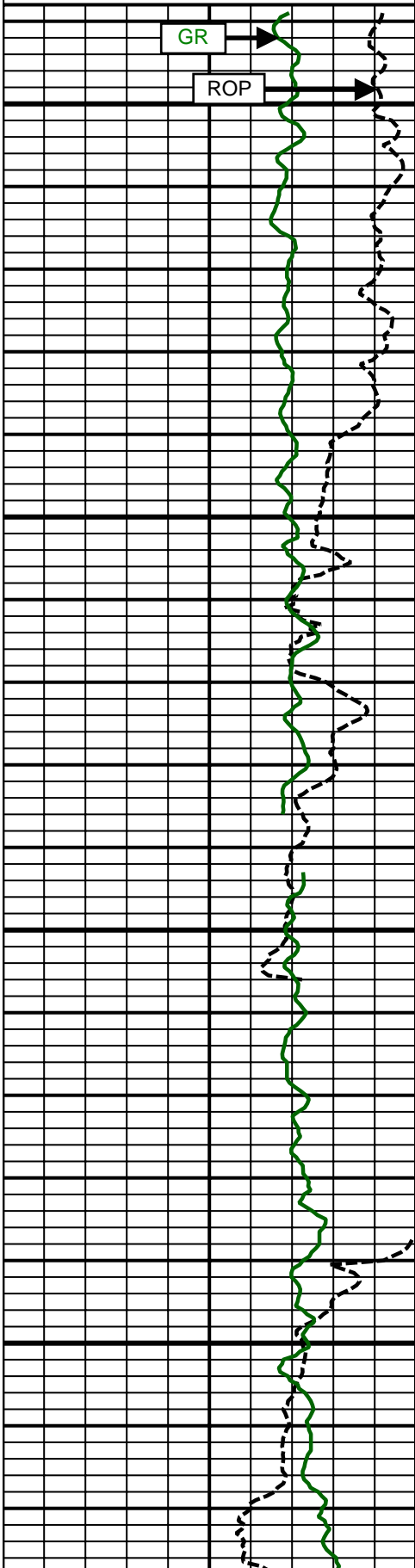
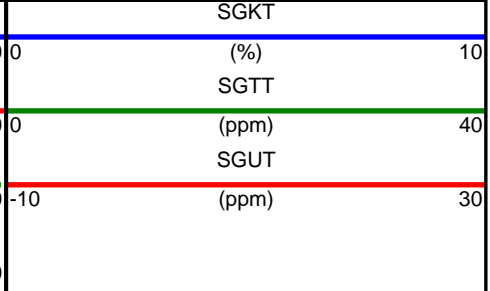
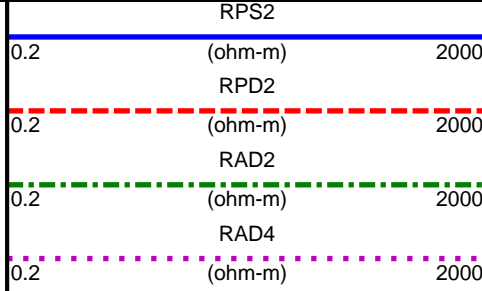
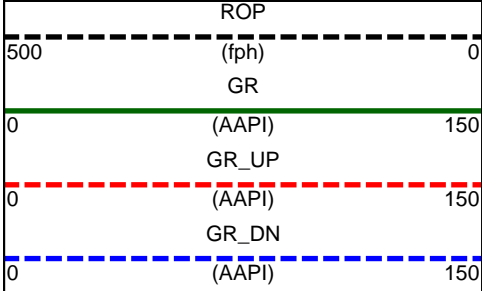
KCl Concentration: 0%

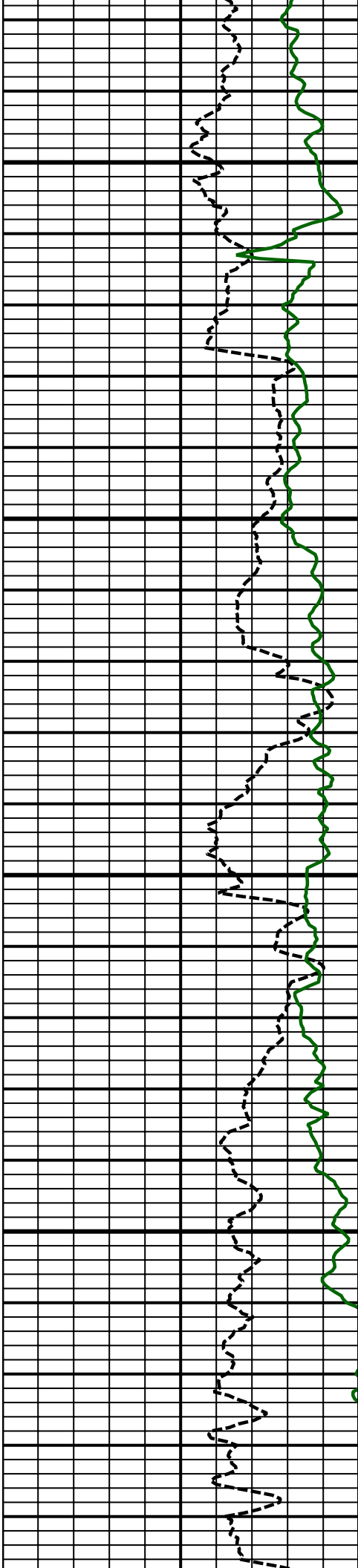
M/LWD LOG COMMENTS	
Comment No. 1-1	No logging occurred during this run.
Comment No. 2-1	RECORDED DATA LOG Start of M/LWD Drilling Run 02 Weatherford International provided 6 3/4 in. Directional, Gamma Ray, and Temperature for Run 02. Run 02 started formation drilling July 14, 2013 at 00:50 at 6734 MD / 6650 TVD. Weatherford International logged the 8.750 in. borehole. The WBM at the start of drilling was 10.20 ppg.
Comment No. 2-2	End of M/LWD Drilling Run 02 Run 02 ended drilling formation July14, 2013 at 21:46 at 7565 MD / 7165 TVD. The WBM at the end of drilling was 10.20 ppg.
Comment No. 3-1	RECORDED DATA LOG Start of M/LWD Drilling Run 03 Weatherford International provided 4 3/4 in. Directional, Rotary Steerable, Resistivity, Gamma Ray, and Bore/Annulus Pressure for Run 03. Run 03 started formation drilling July 16, 2013 at 13:46 at 7565 MD / 7165 TVD. Weatherford International logged the 6.125 in. borehole. The WBM at the start of drilling was 10.20 ppg.
Comment No. 3-2	End of M/LWD Drilling Run 03 Run 03 ended drilling formation July 16, 2013 at 20:14 at 7930 MD / 7158 TVD. The WBM at the end of drilling was 10.20 ppg.
Comment No. 4-1	RECORDED DATA LOG Start of LWD Drilling Run 04 Weatherford International provided 4 3/4 in. Directional, Resistivity, Spectral Azimuthal Gamma Ray, and Temperature for Run 04. Run 04 started formation drilling July 17, 2013 at 12:14 at 7930 MD / 7158 TVD. Weatherford International logged the 6.125 in. borehole. The WBM at the start of drilling was 10.20 ppg.
Comment No. 4-2	End of LWD Drilling Run 04 Run 04 ended drilling formation July 19, 2013 at 01:50 at 11722 MD / 7206 TVD. The WBM at the end of drilling was 10.30 ppg.

CURVE SPECIFICATIONS				
CURVE TYPE	MNEMONIC	UNITS	COMMENTS	CORRECTIONS
Rate of Penetration	ROP	fph	Rate of Penetration 3.0 ft window 0.5 ft Exponential Smoothing	None
Gamma Ray	GR	AAPI	Gamma Ray 3.0 ft window 0.5 ft Exponential Smoothing	See LWD Run Remarks
Gamma Ray Up	GR UP	AAPI	Azimuthal Gamma Ray 3.0 ft window 0.5 ft Exponential Smoothing	
Gamma Ray Down	GR DN	AAPI	Azimuthal Gamma Ray 3.0 ft window 0.5 ft Exponential Smoothing	
Deep Phase Resistivity	RPD2	ohm-m	2 MHz Deep Phase Resistivity 3.0 ft window 0.5 ft Exponential Smoothing	
Deep Attenuation Resistivity	RAD2	ohm-m	2 MHz Deep Attenuation Resistivity 3.0 ft window 0.5 ft Exponential Smoothing	
Deep Attenuation Resistivity	RAD4	ohm-m	400 kHz Deep Attenuation Resistivity 3.0 ft window 0.5 ft Exponential Smoothing	
Shallow Phase Resistivity	RPS2	ohm-m	2 MHz Shallow Phase Resistivity 3.0 ft window 0.5 ft Exponential Smoothing	
Uranium Total	SGUT	ppm	Uranium Concentration 3.0 ft window 0.5 ft Exponential Smoothing	
Thorium Total	SGTT	ppm	Thorium Concentration 3.0 ft window 0.5 ft Exponential Smoothing	
Potassium Total	SGKT	%	Potassium Concentration 3.0 ft window 0.5 ft Exponential Smoothing	



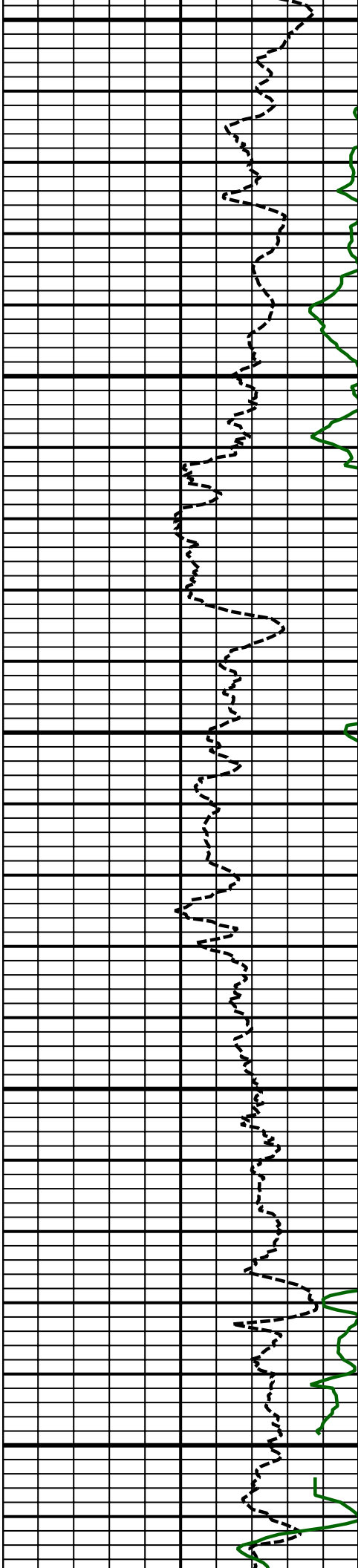
**5 Inch - Measured Depth**





6900  
MD

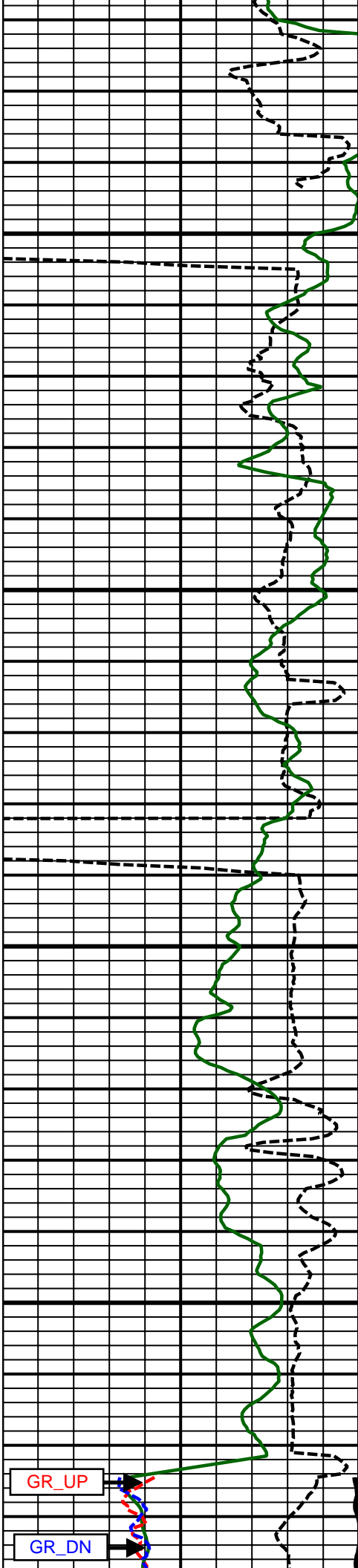
7000  
MD



7100  
MD

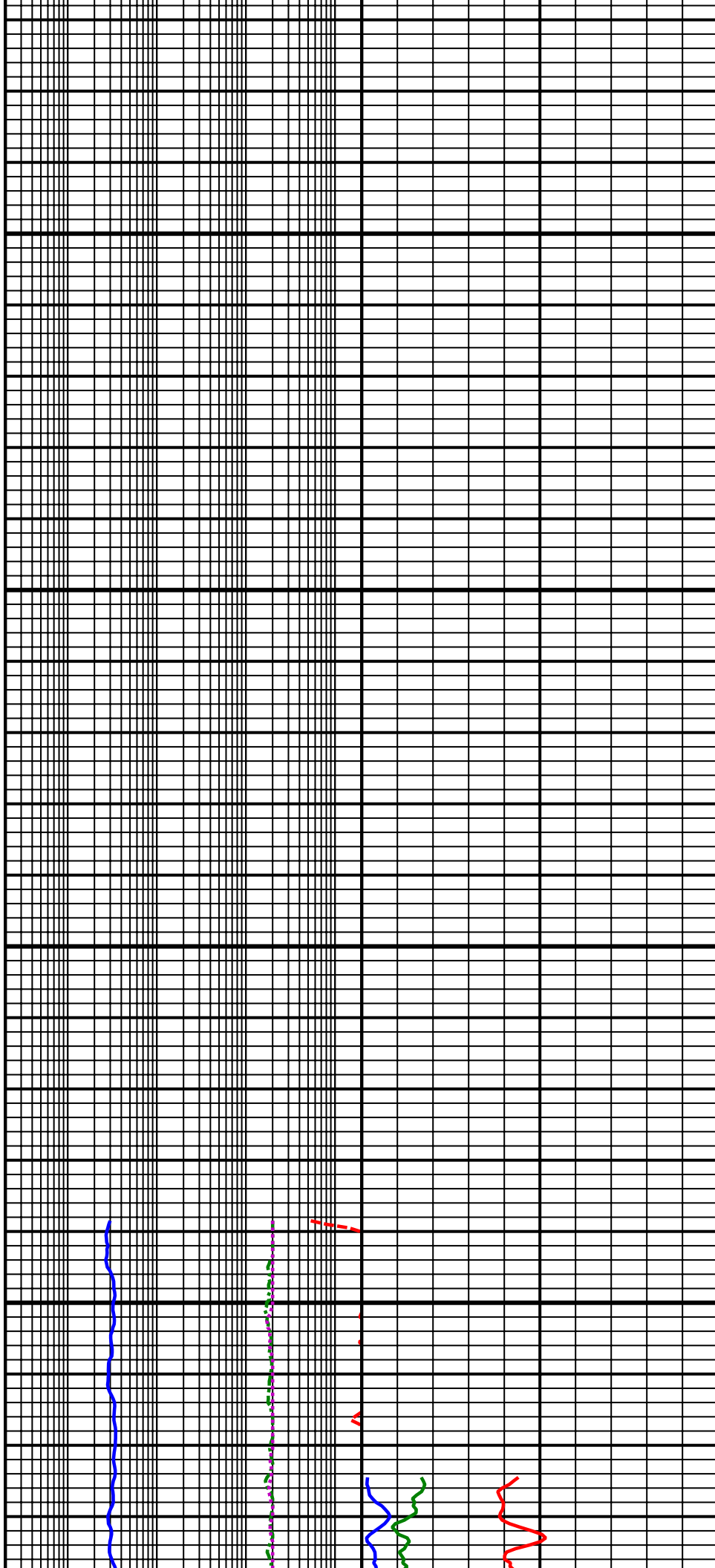
7200  
MD

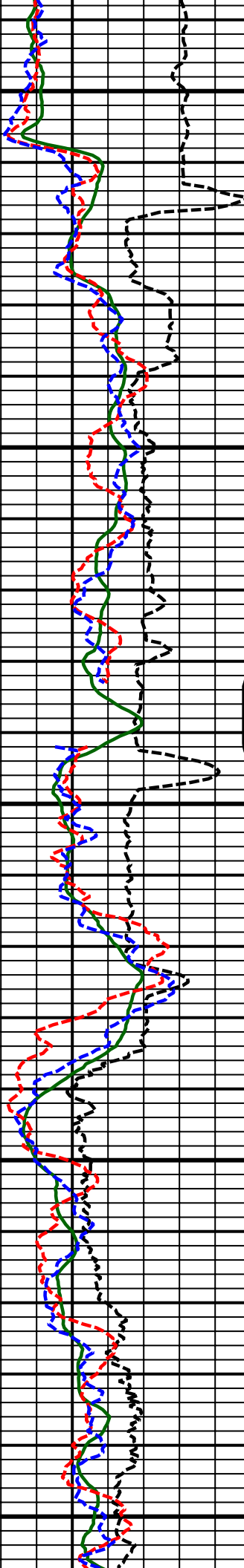
7300  
MD



7400  
MD

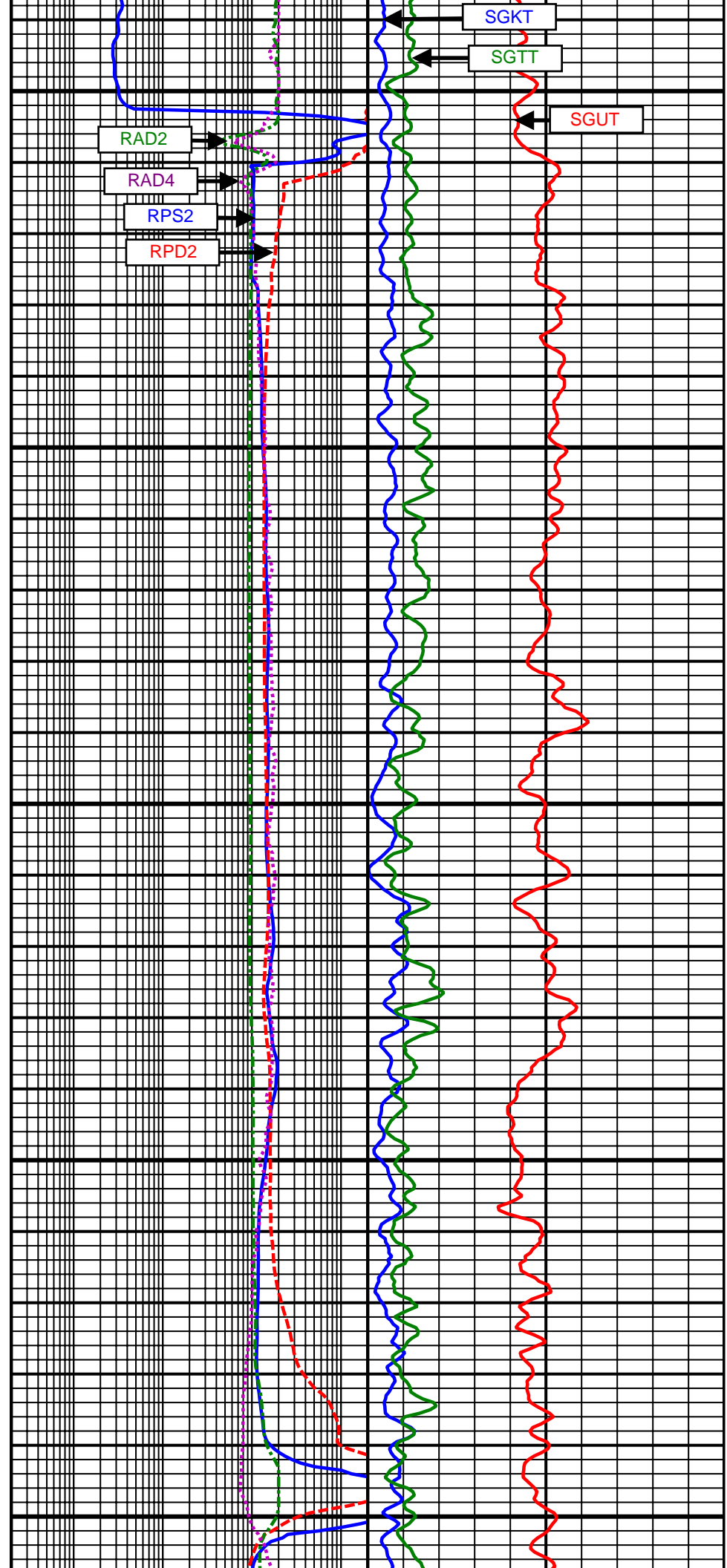
7500  
MD





7600  
MD

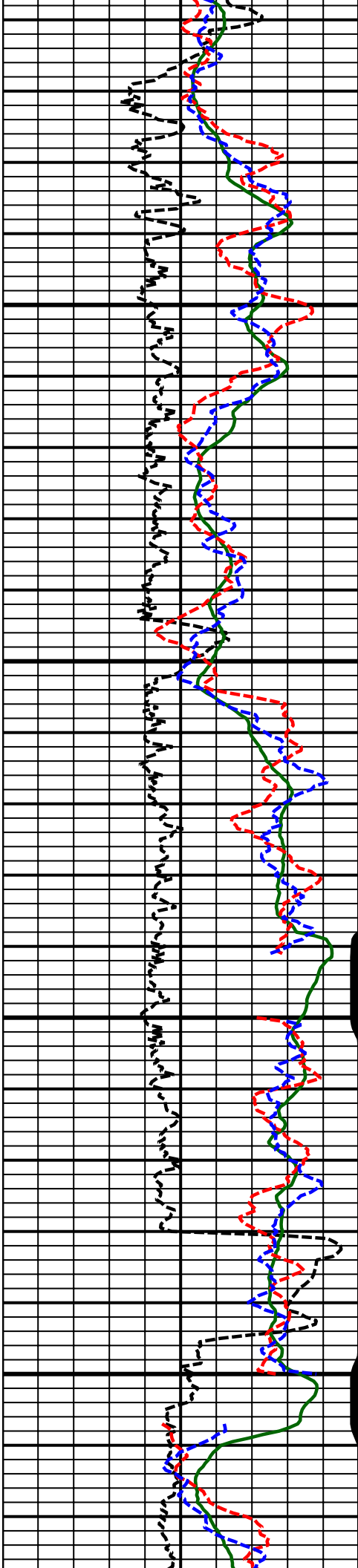
7700  
MD



RAD2  
RAD4  
RPS2  
RPD2

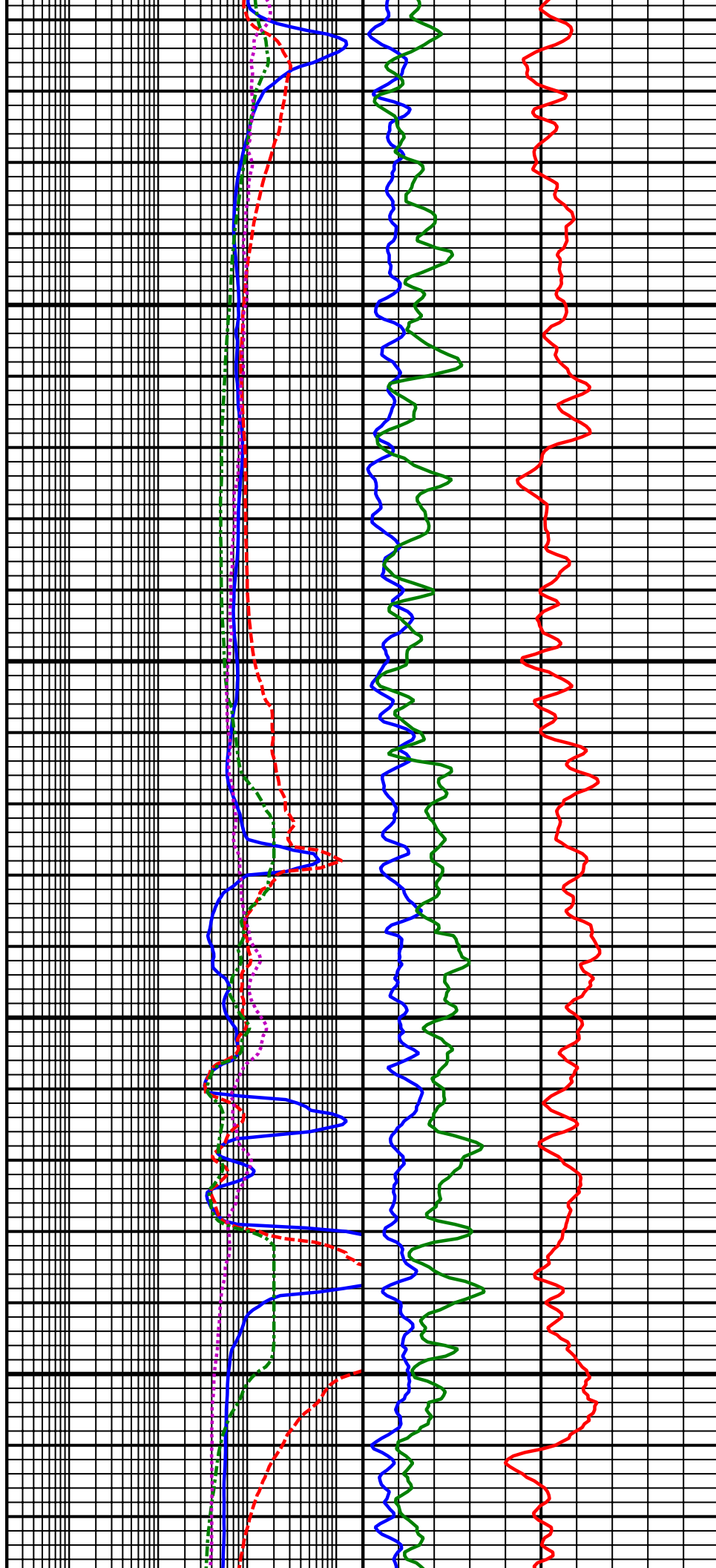
SGKT  
SGTT

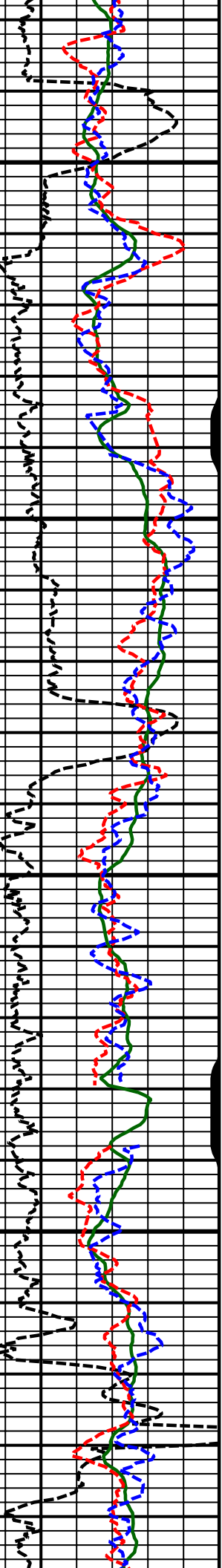
SGUT



7800  
MD

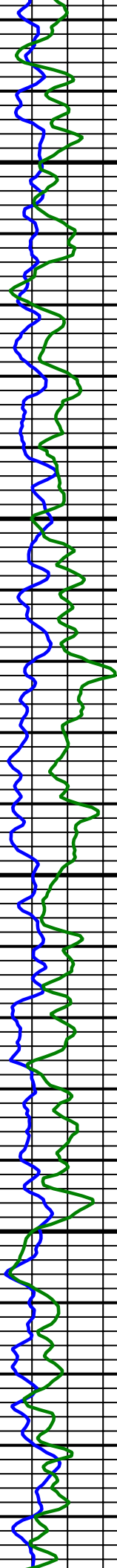
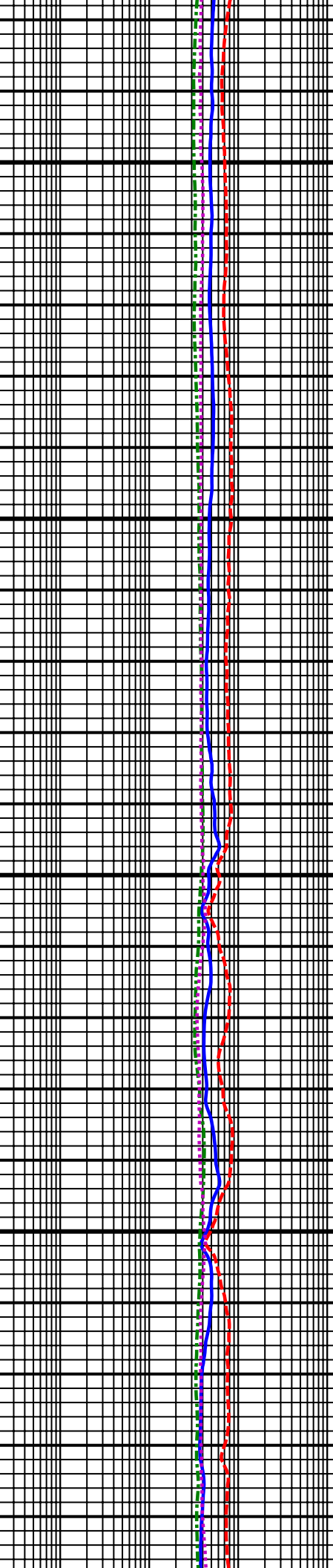
7900  
MD



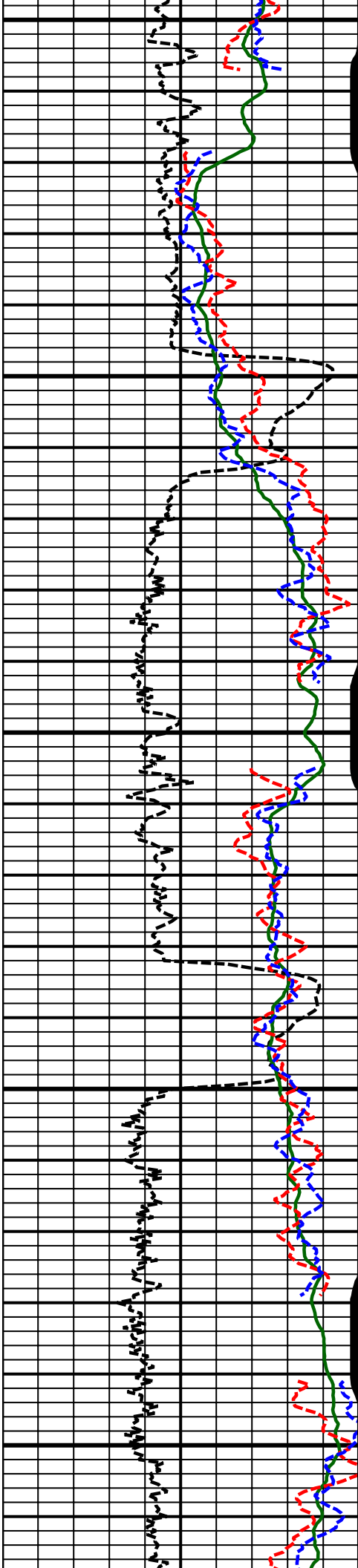


8000  
MD

8100  
MD



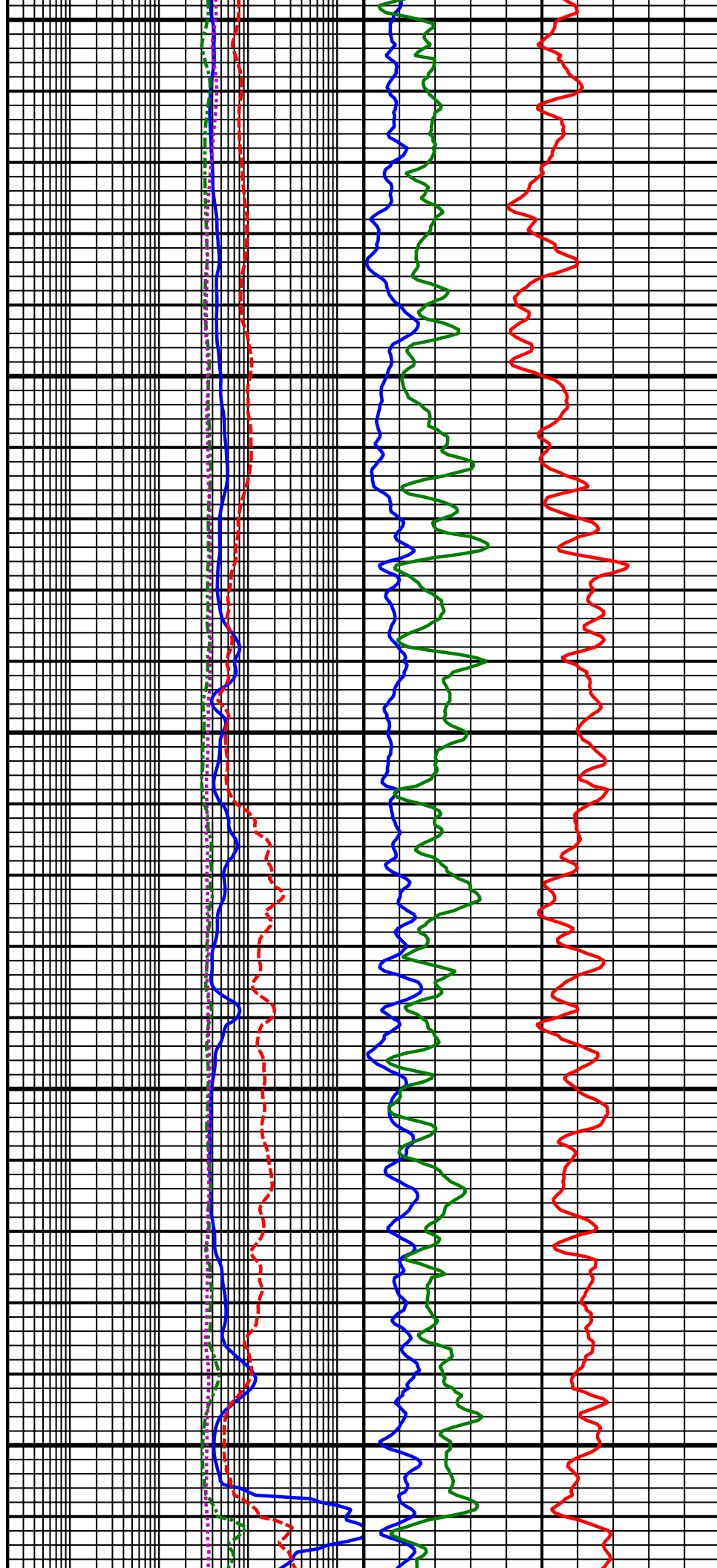


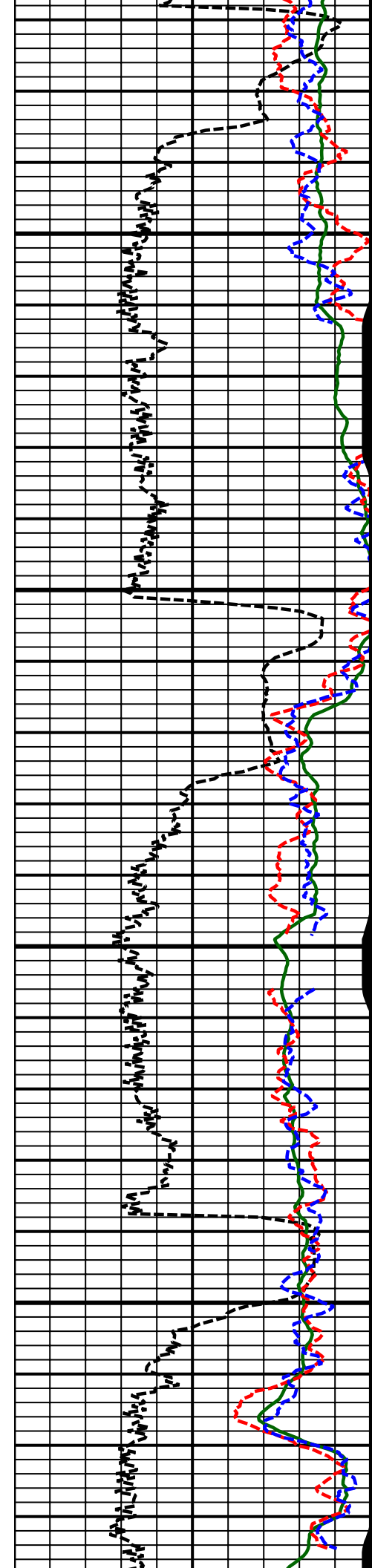


8200  
MD

8300  
MD

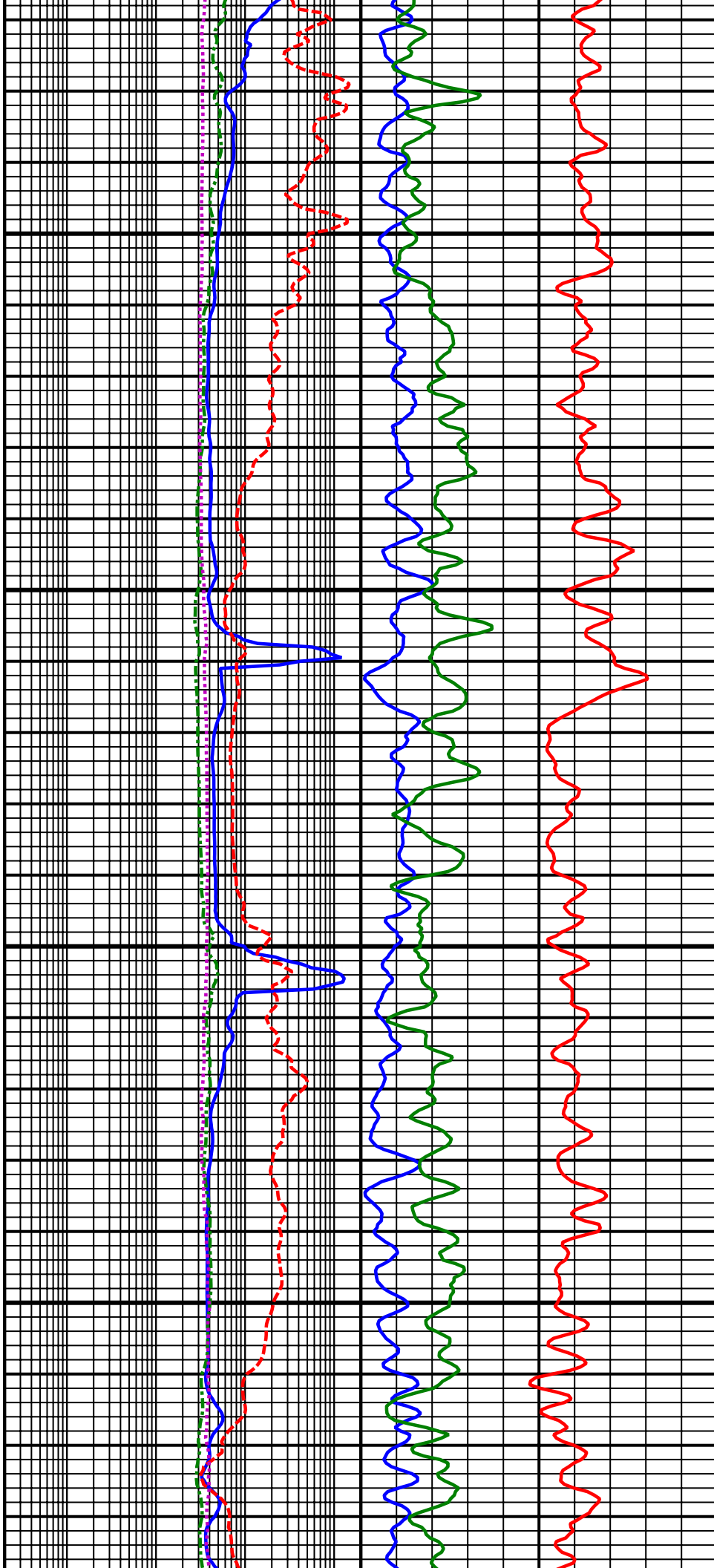
8400  
MD

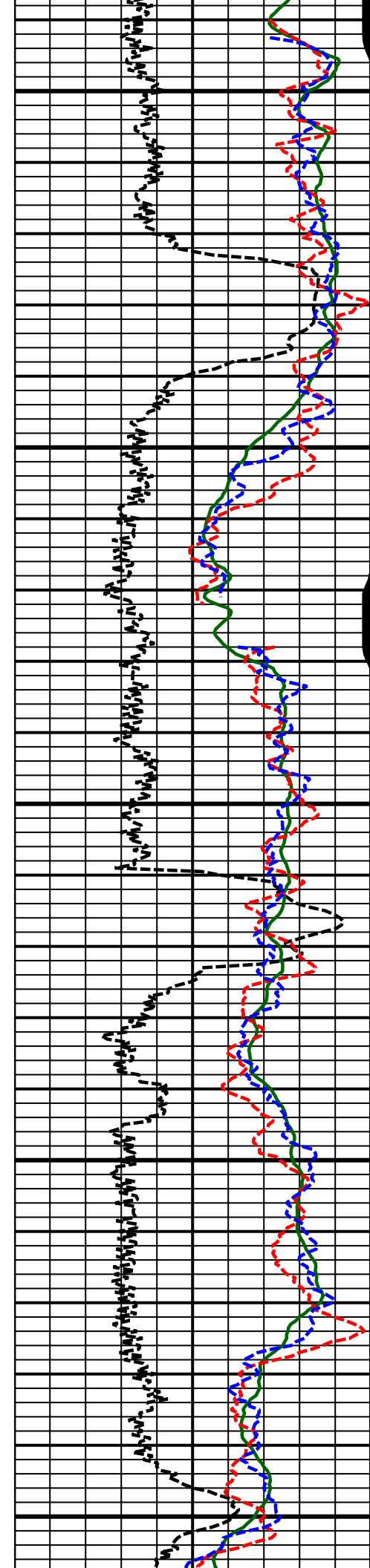




8500  
MD

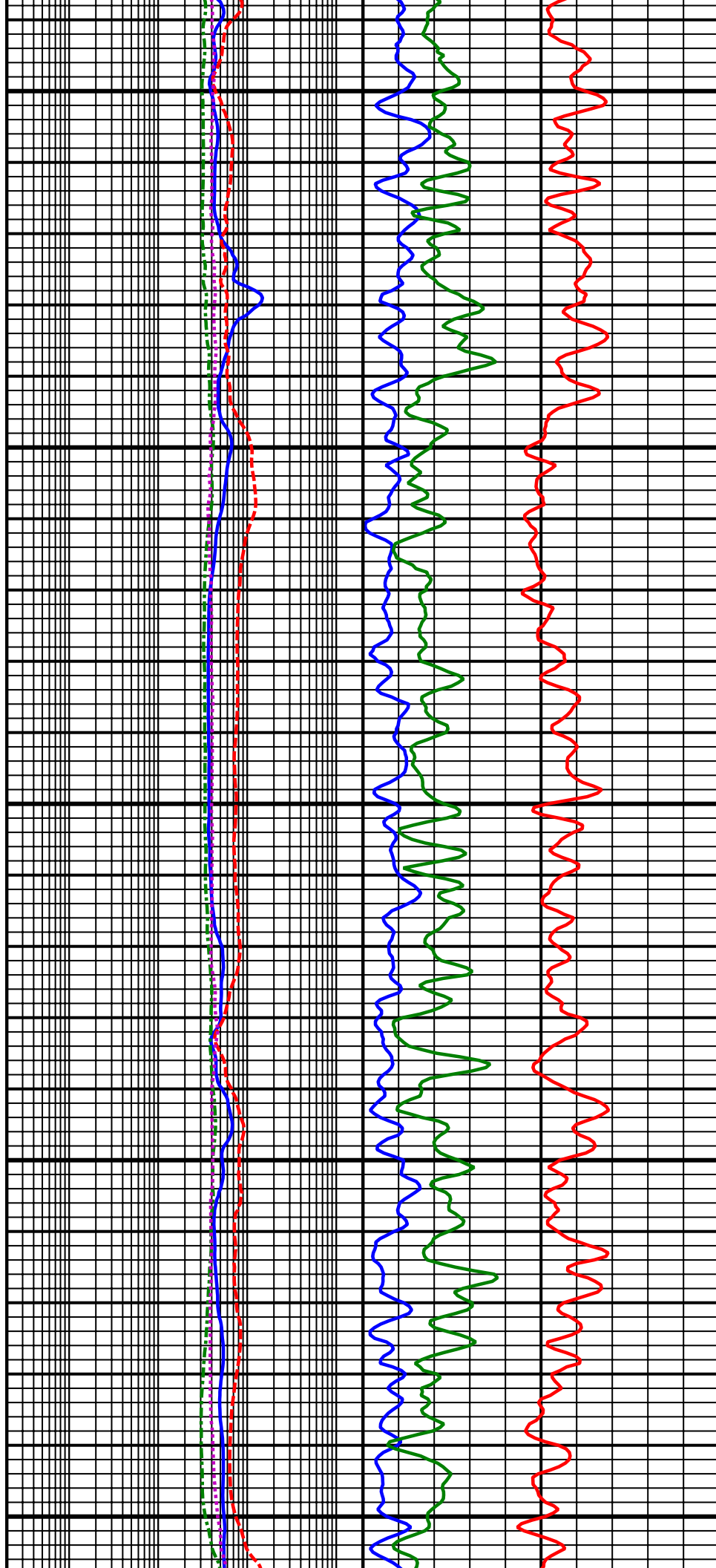
8600  
MD

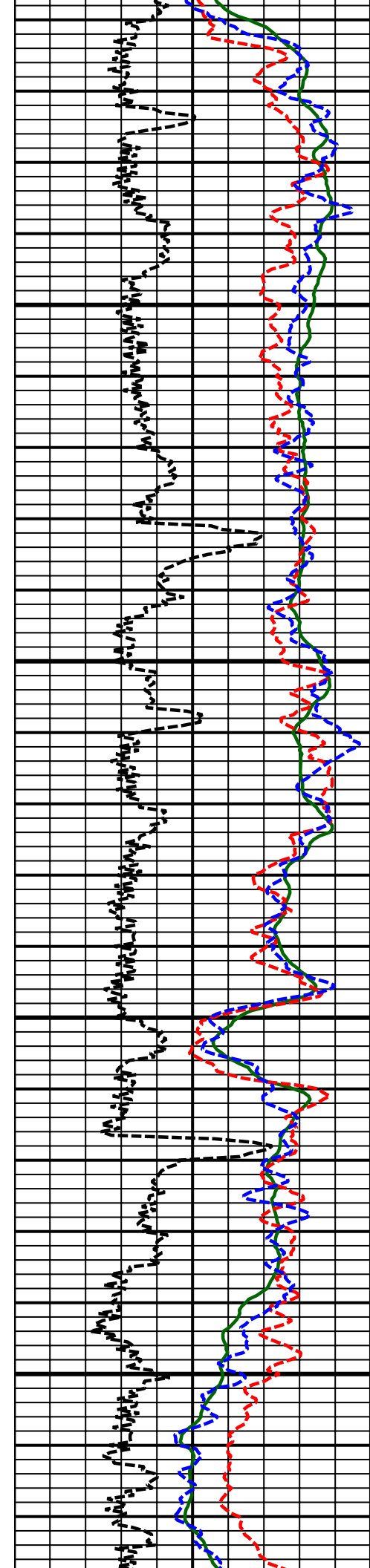




8700  
MD

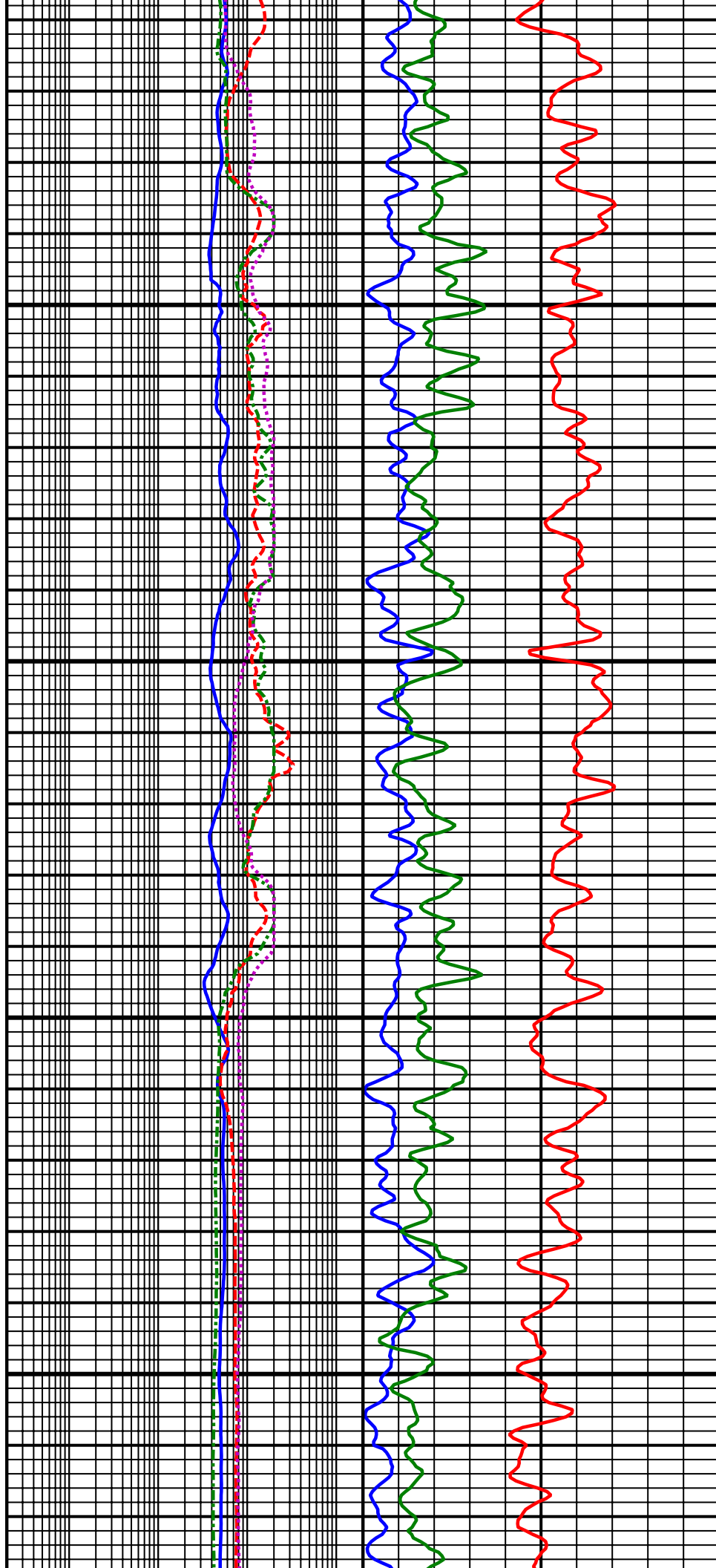
8800  
MD

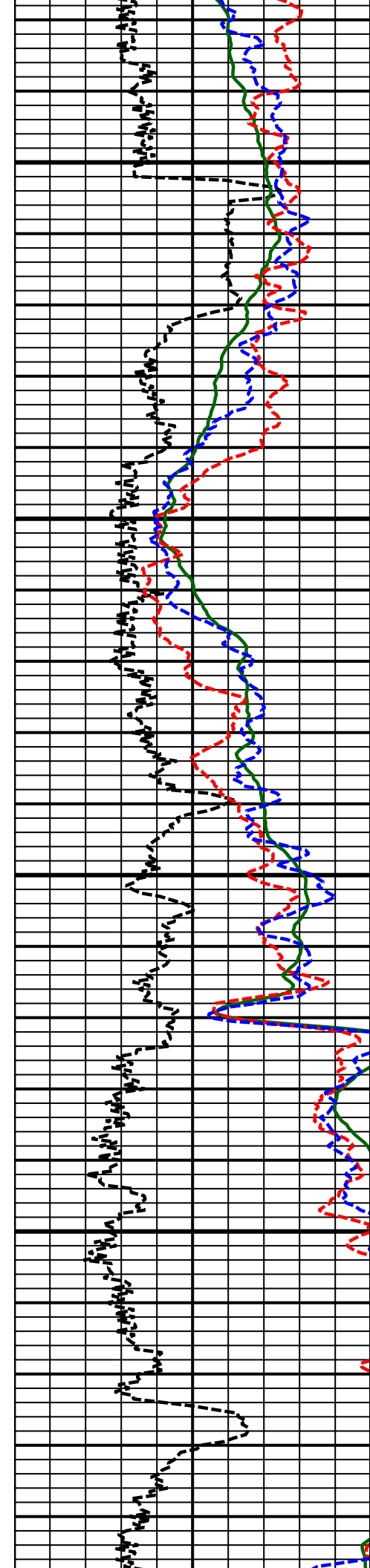




8900  
MD

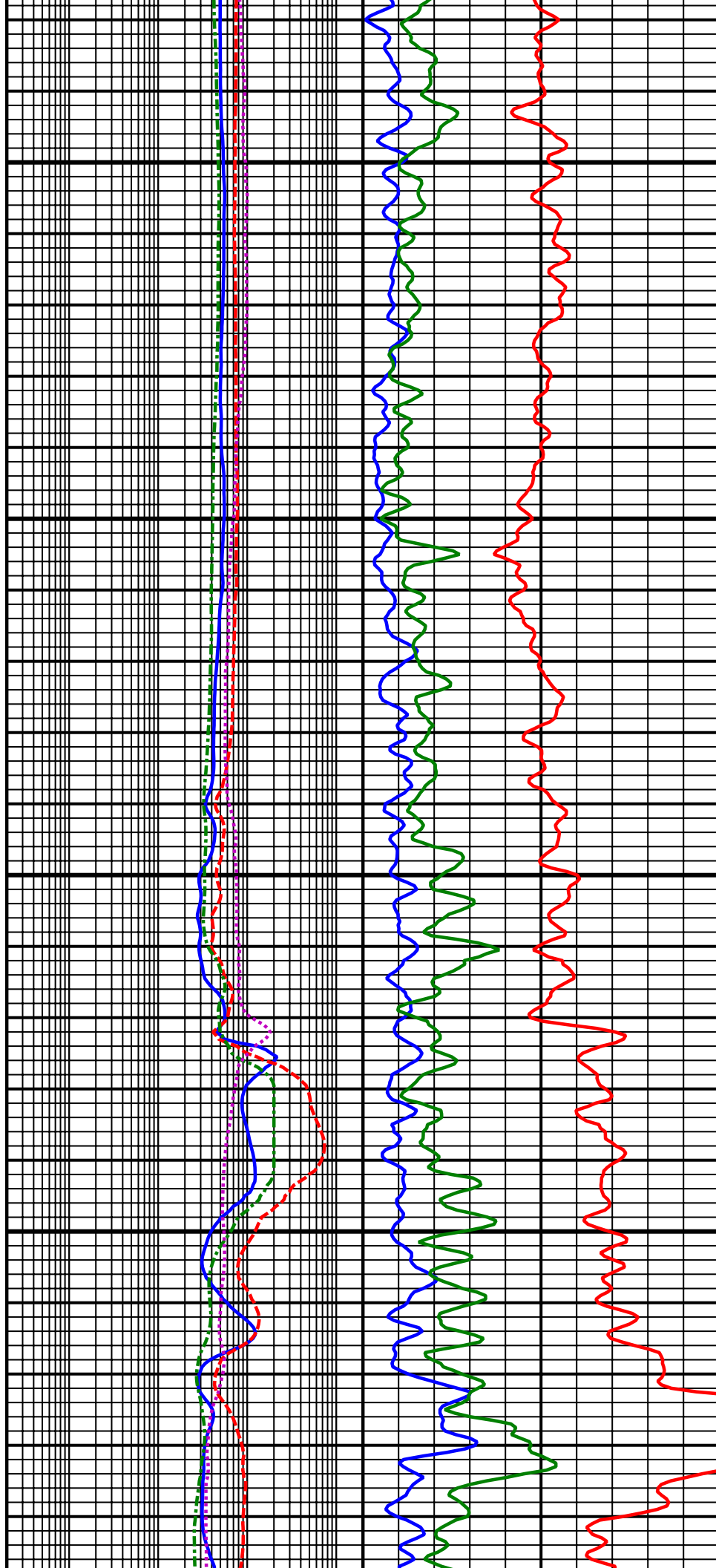
9000  
MD





9100  
MD

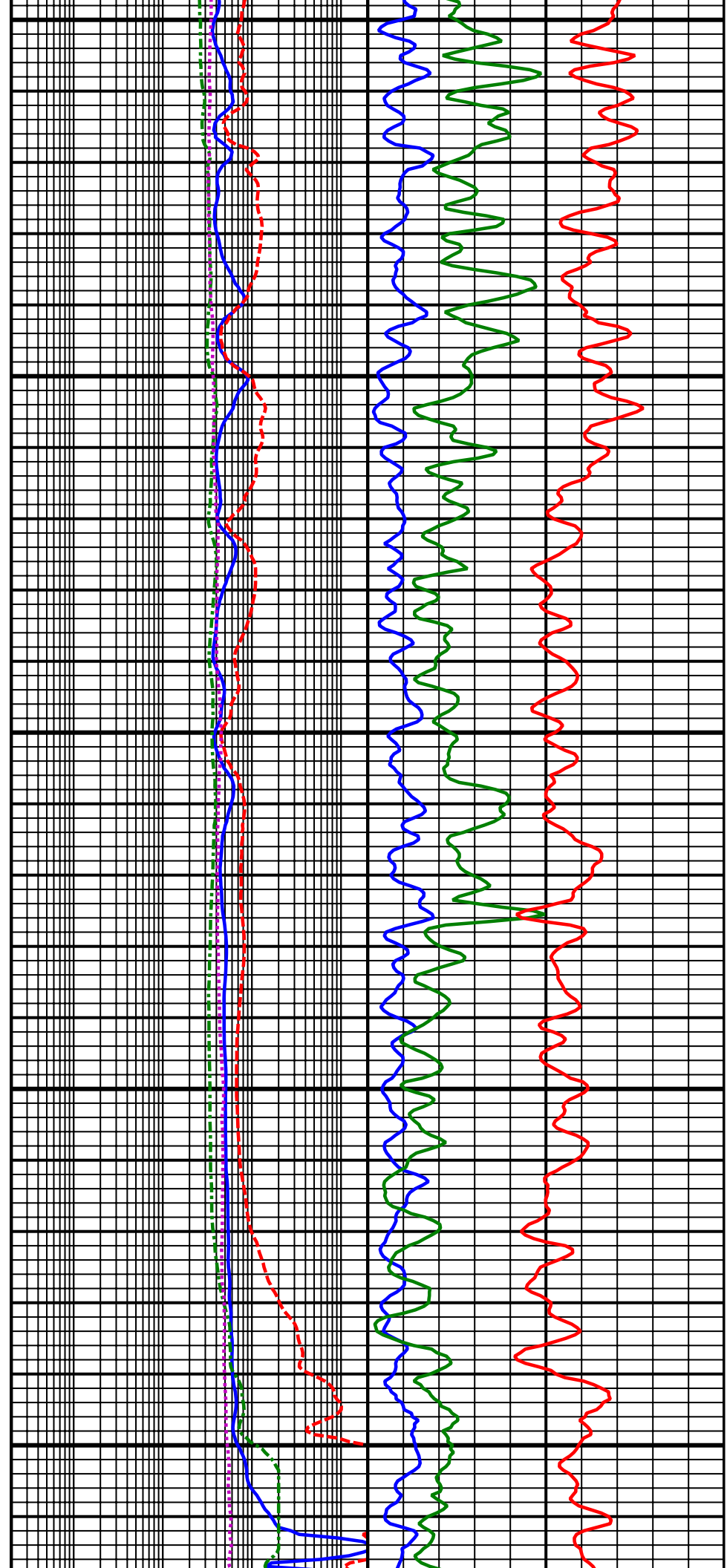
9200  
MD

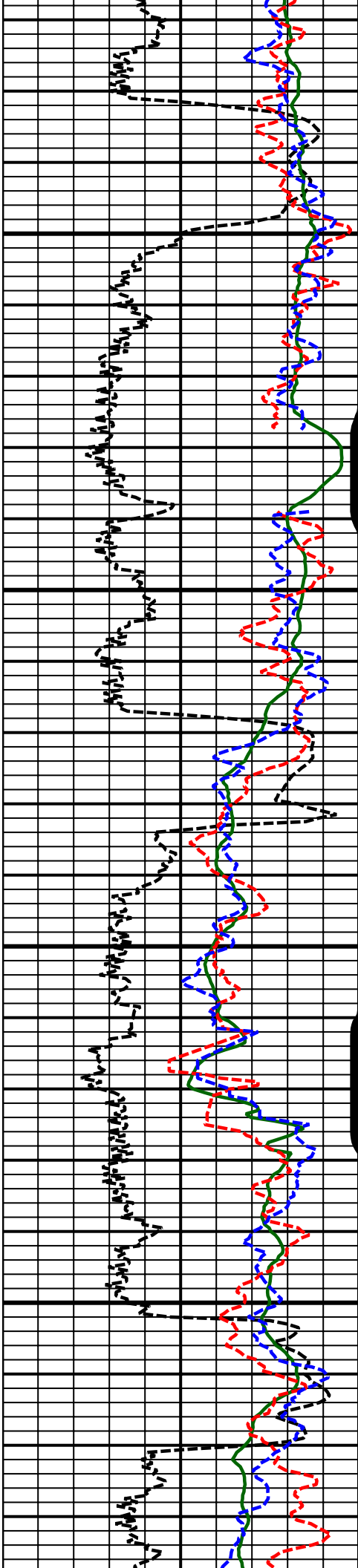


9300  
MD

9400  
MD

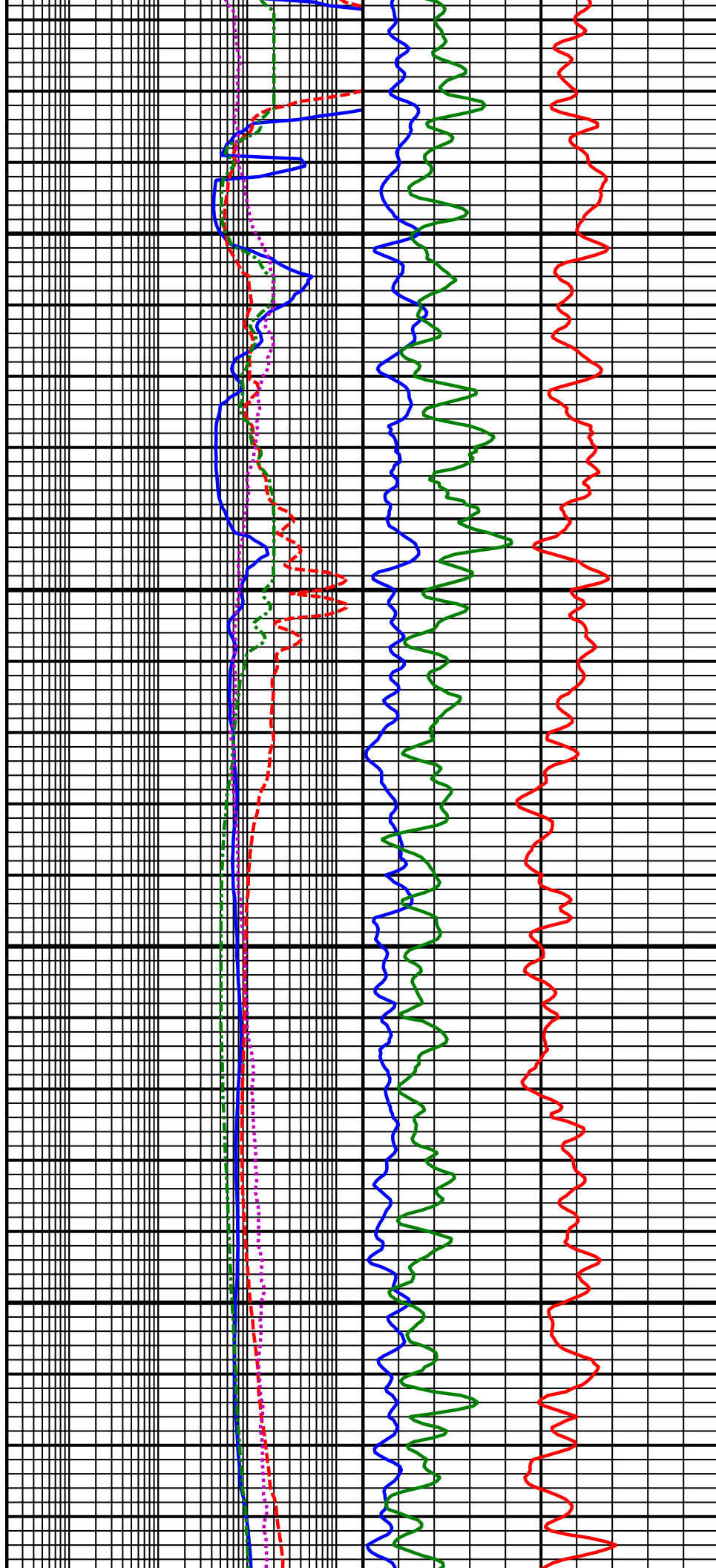
9500  
MD

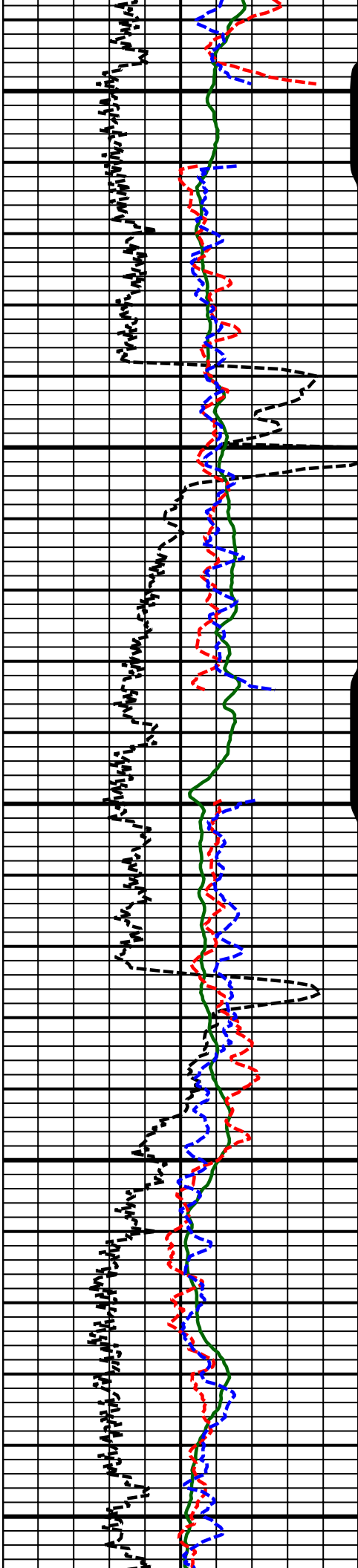




9600  
MD

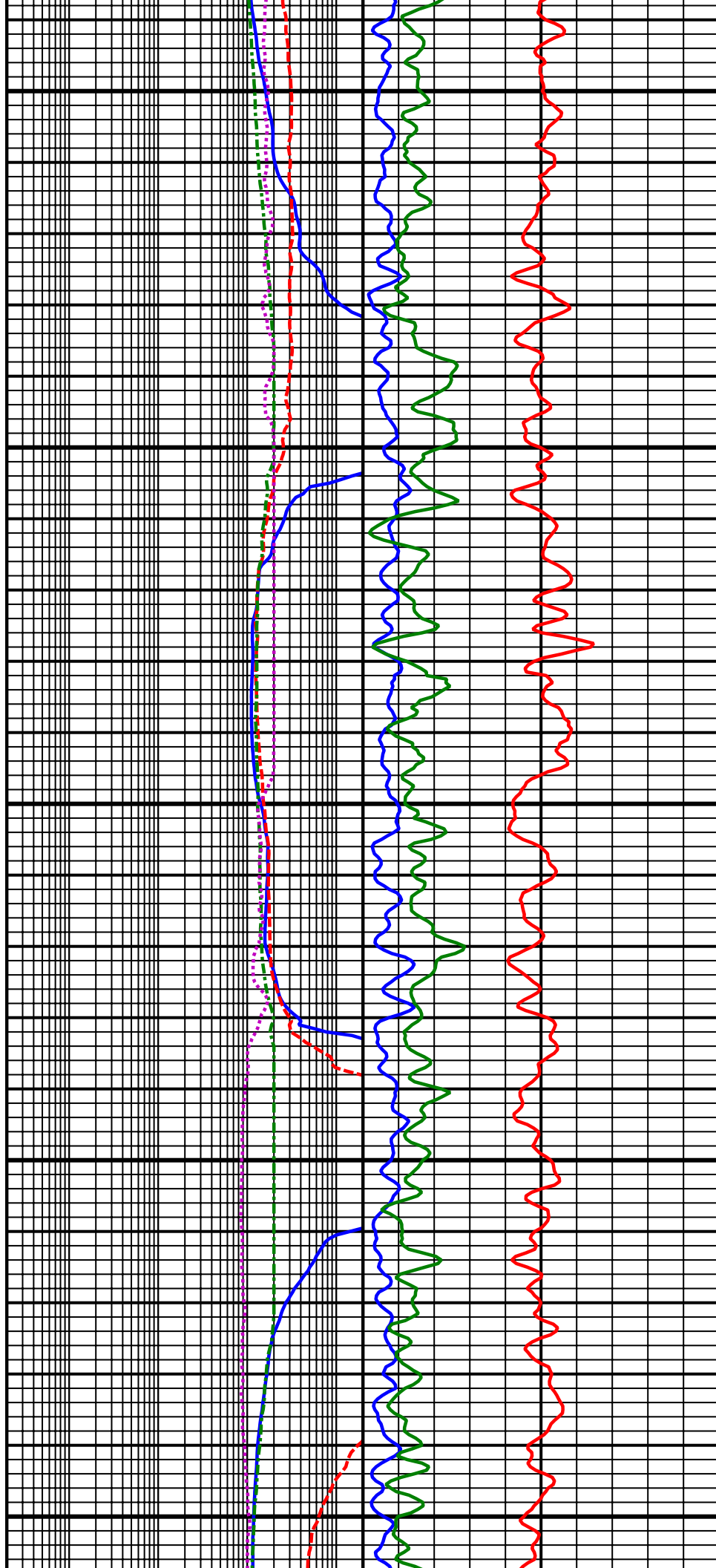
9700  
MD



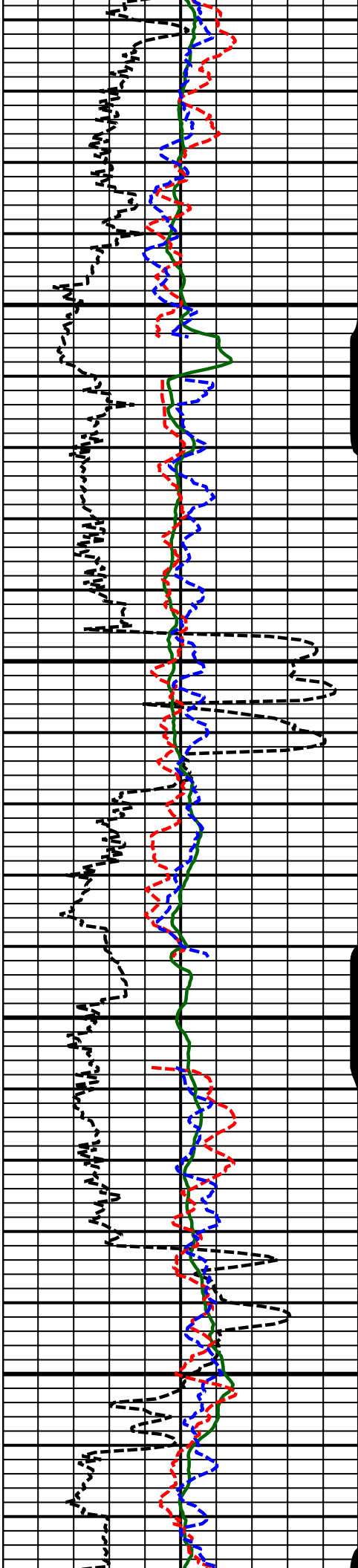


9800  
MD

9900  
MD

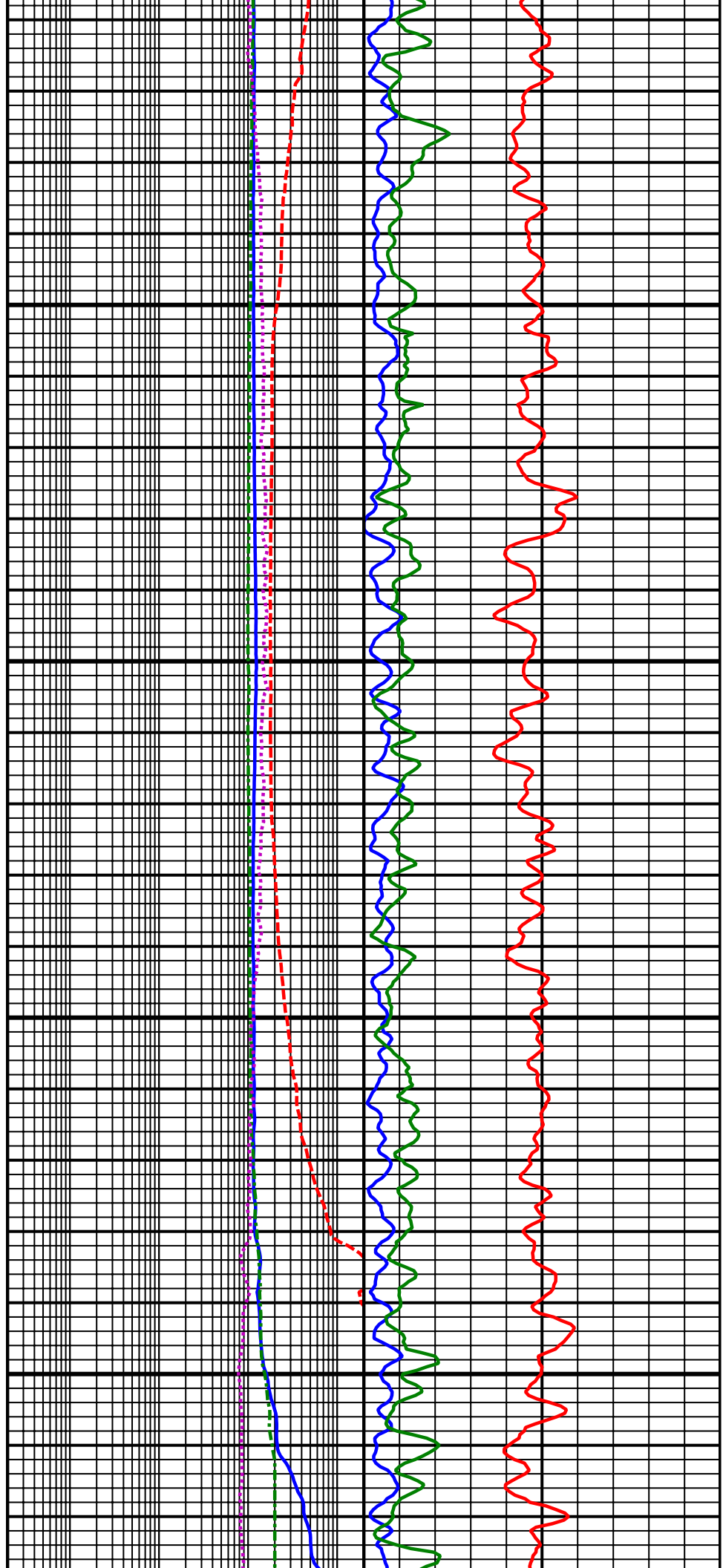


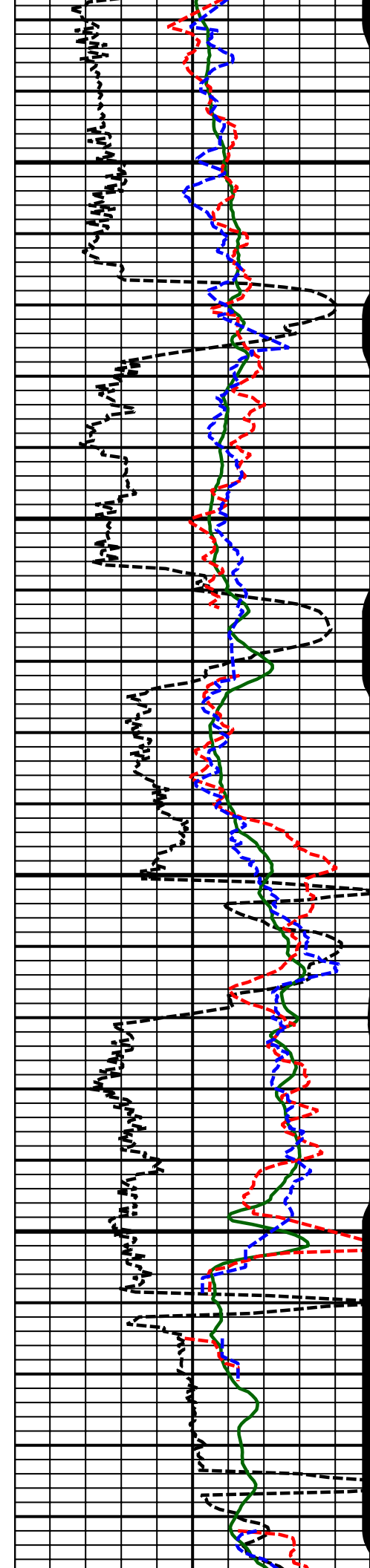




10000  
MD

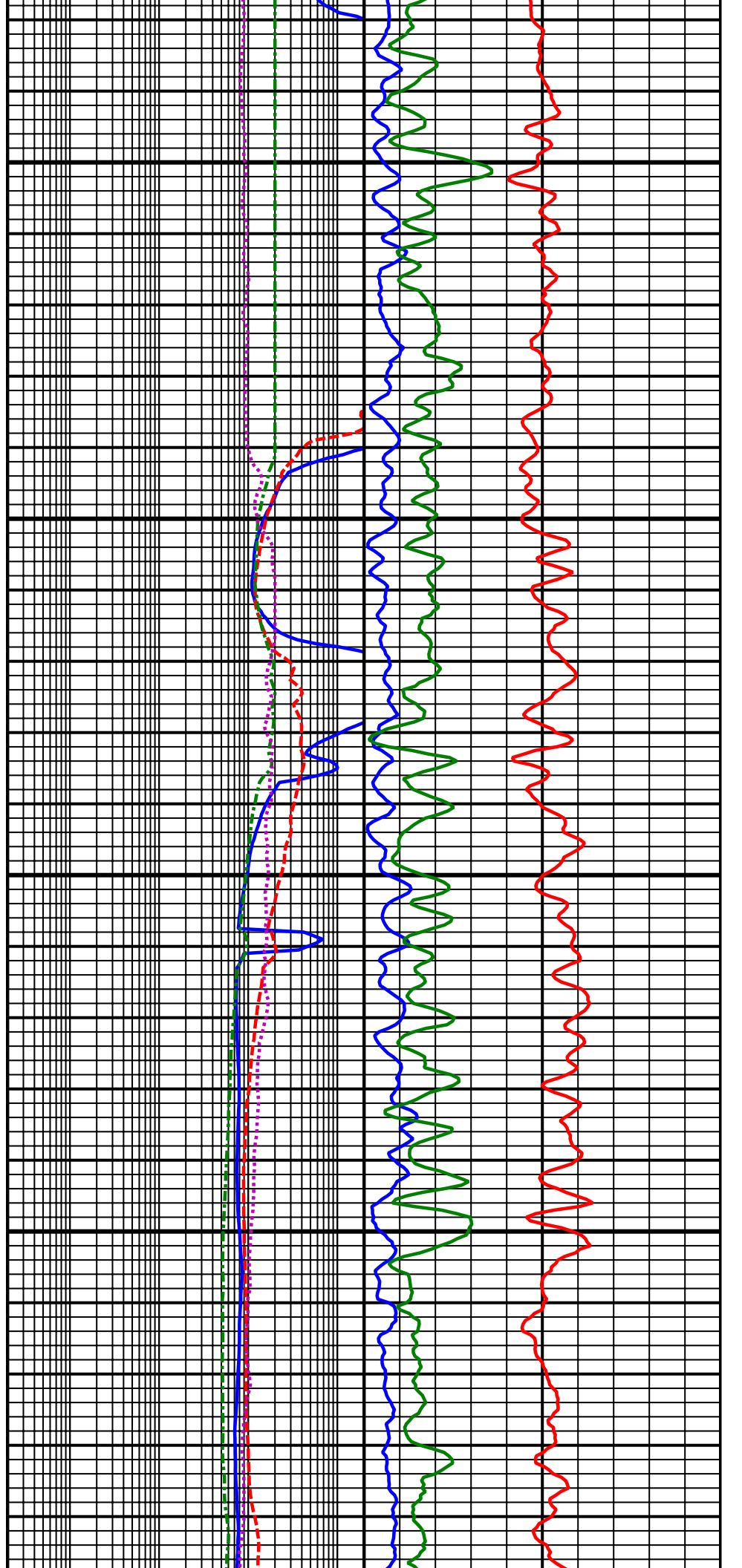
10100  
MD

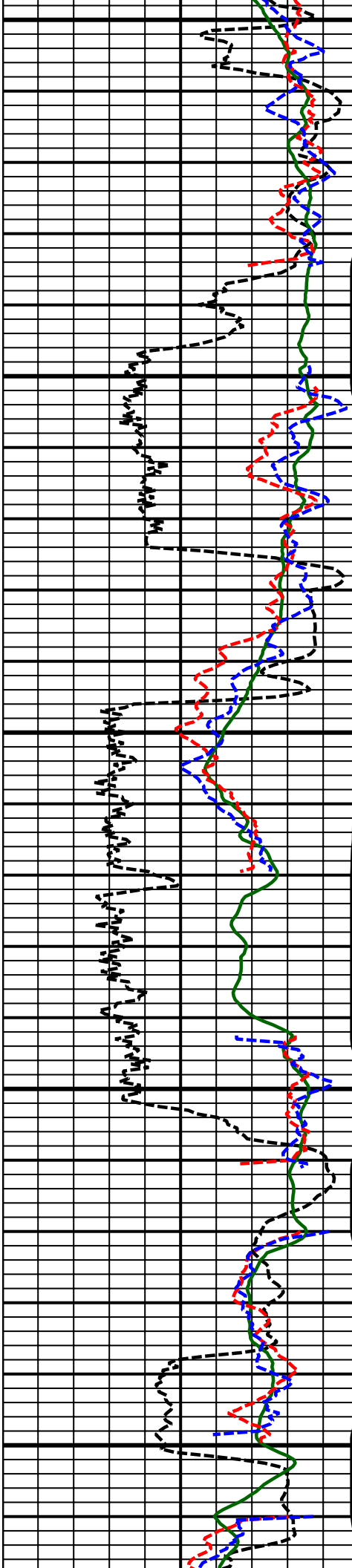




10200  
MD

10300  
MD

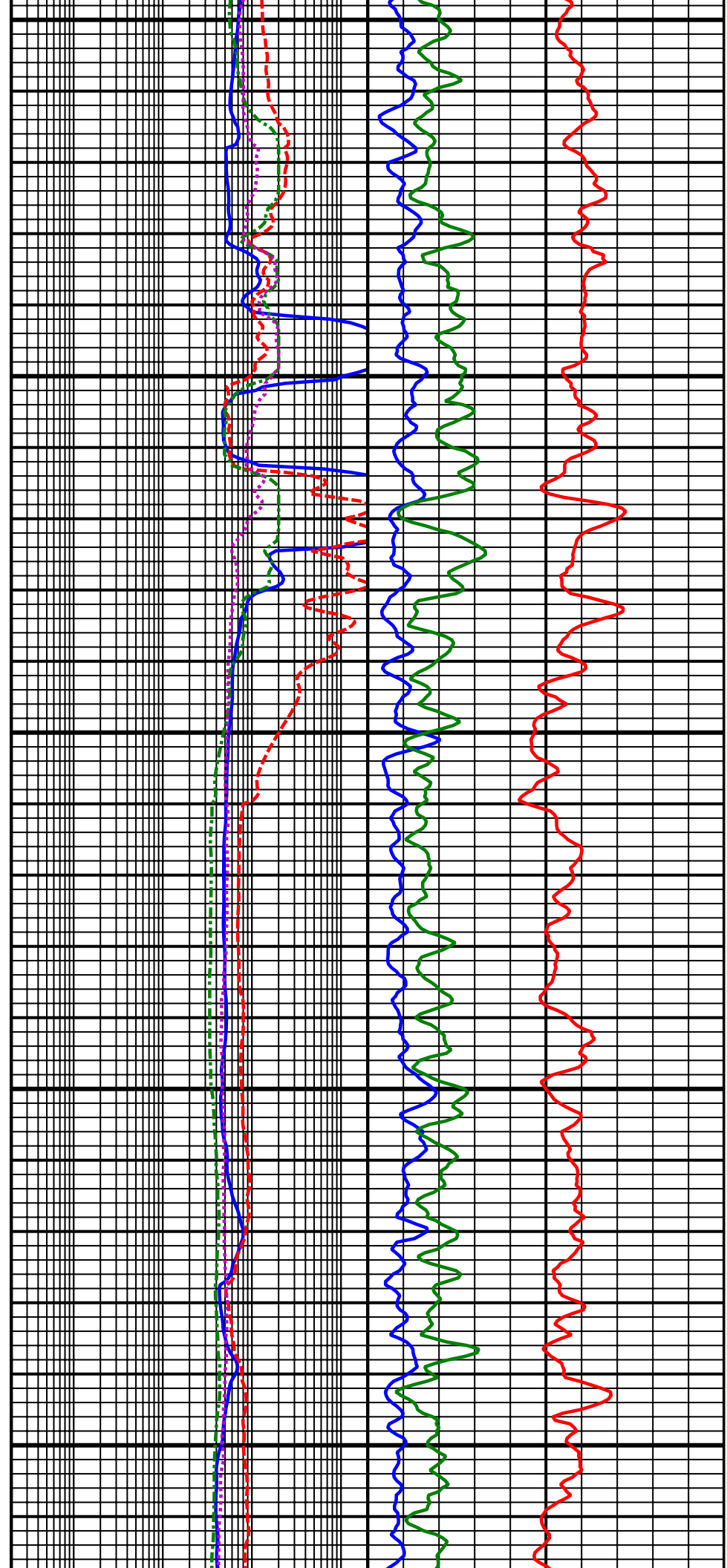


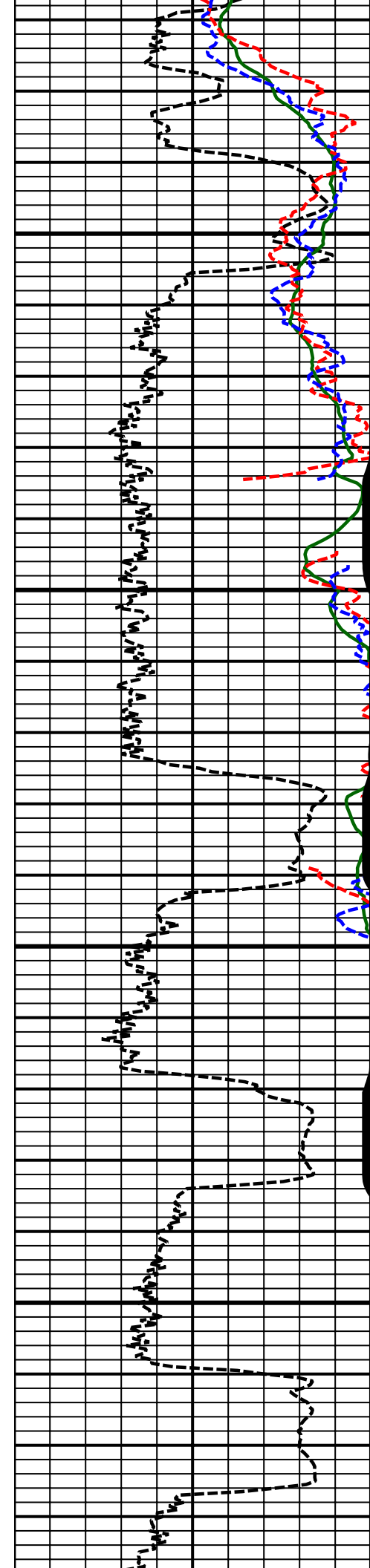


10400  
MD

10500  
MD

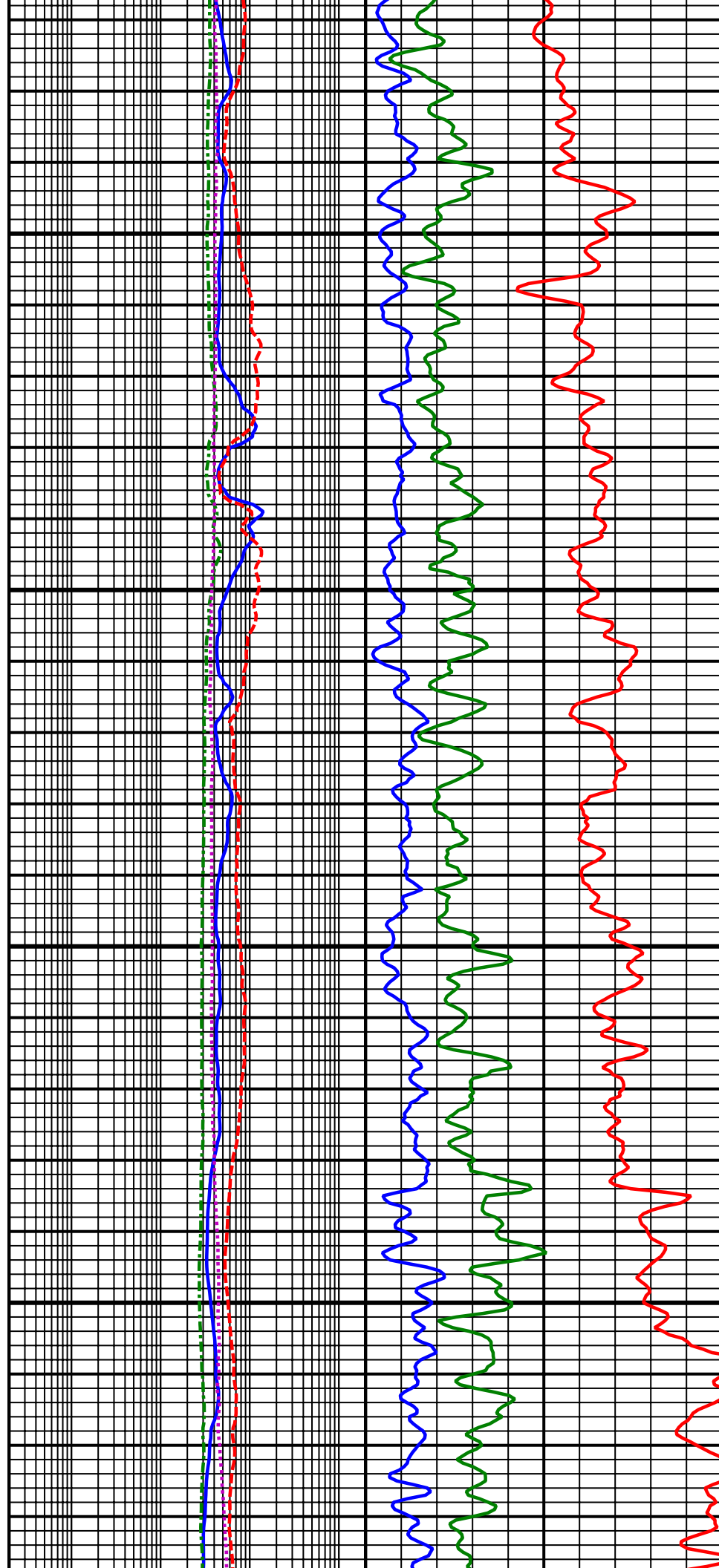
10600  
MD

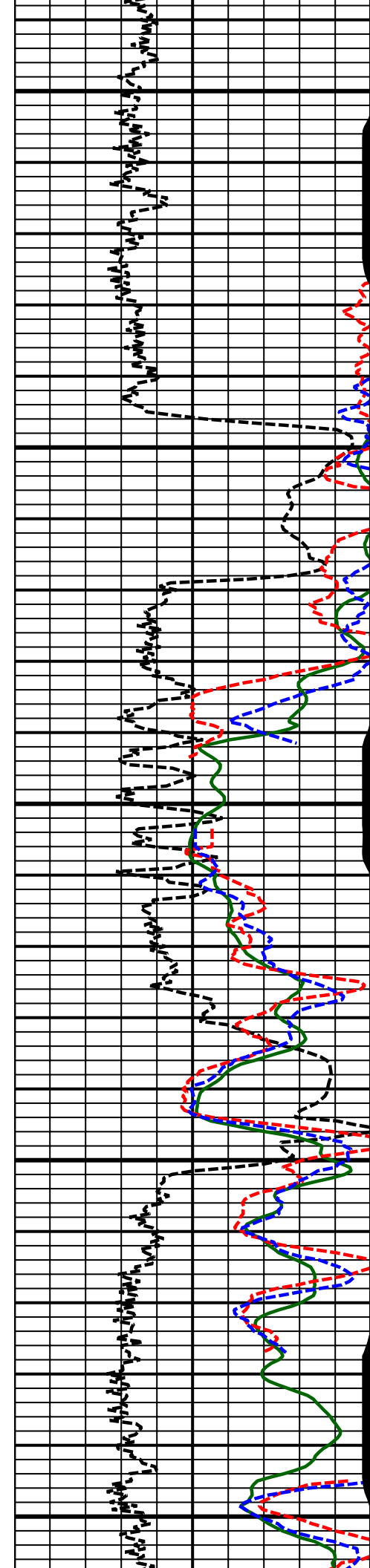




10700  
MD

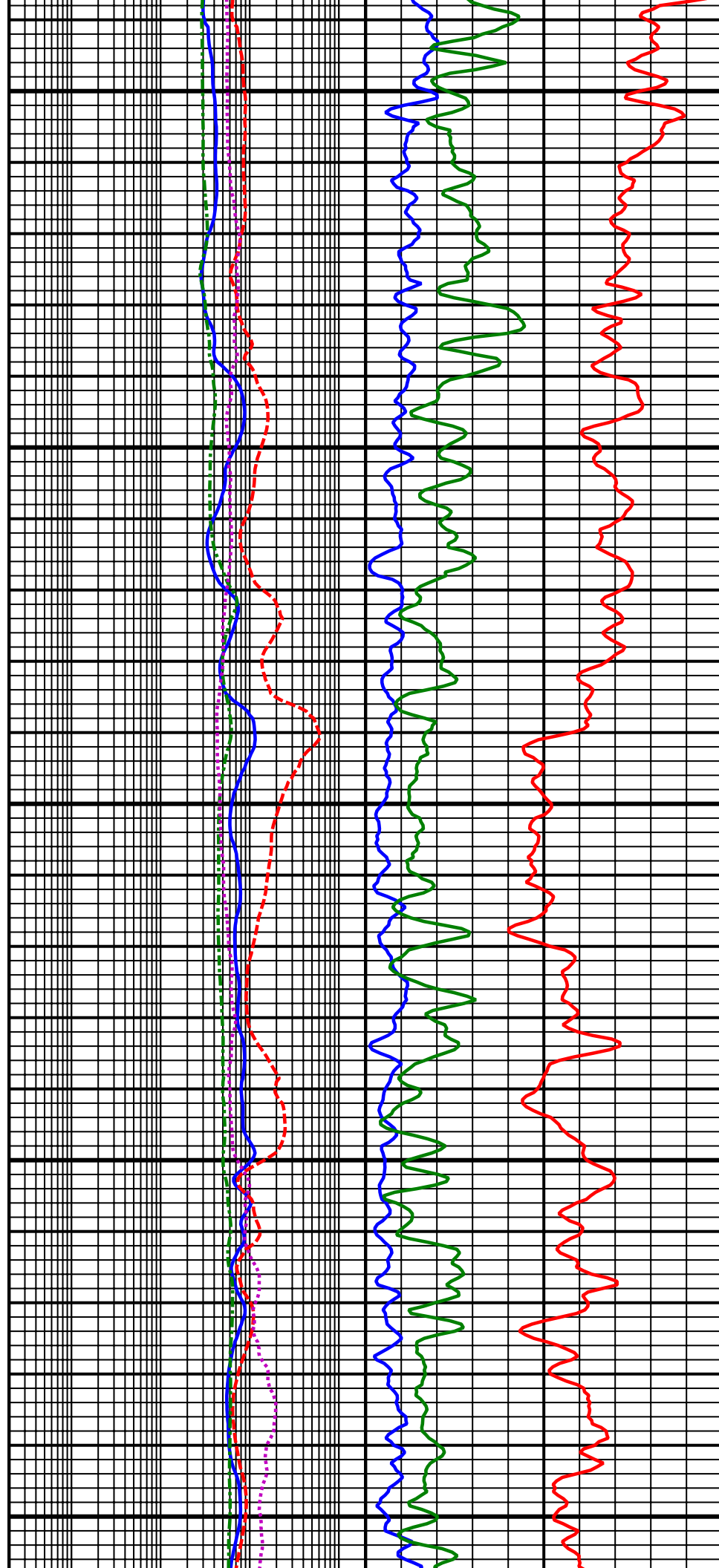
10800  
MD

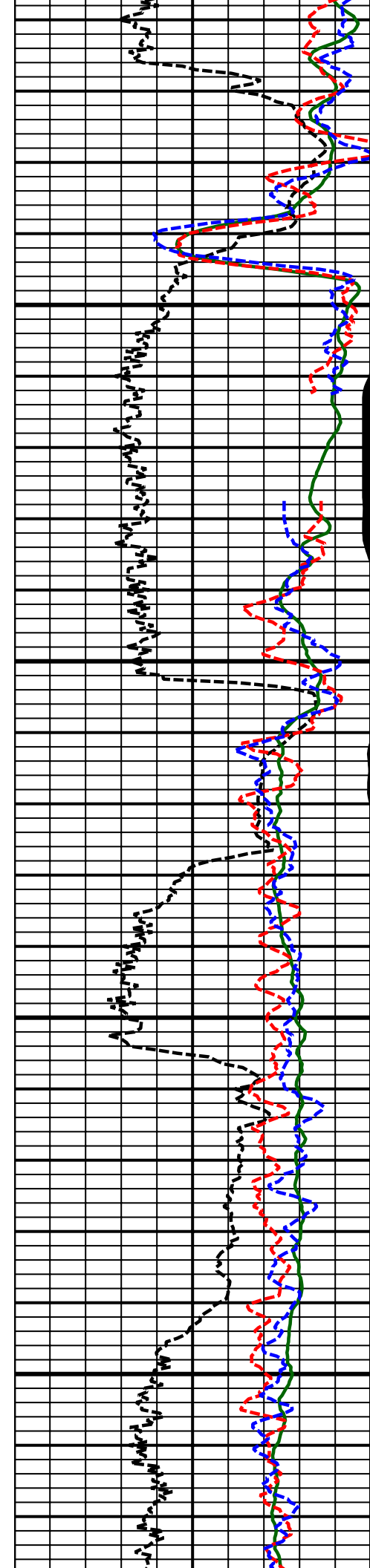




10900  
MD

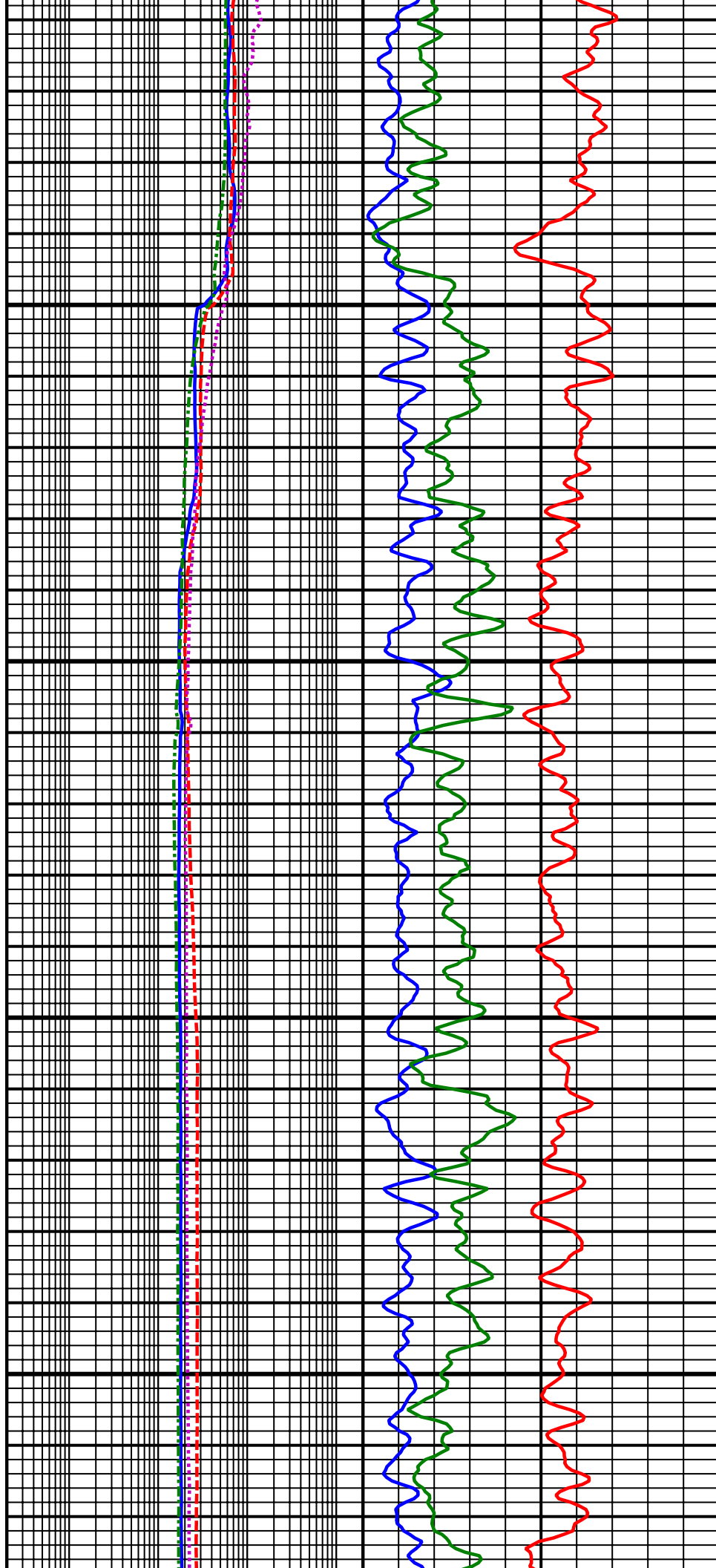
11000  
MD

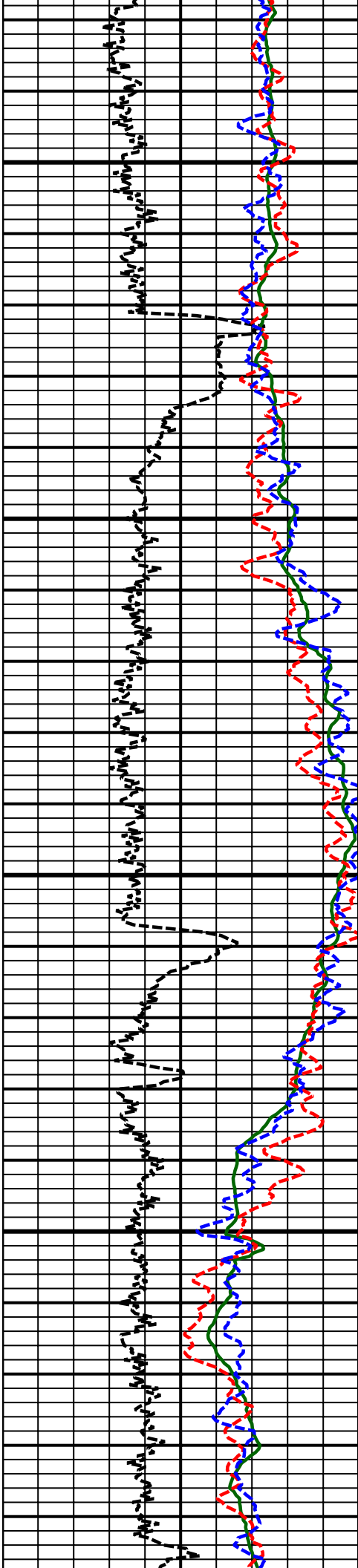




11100  
MD

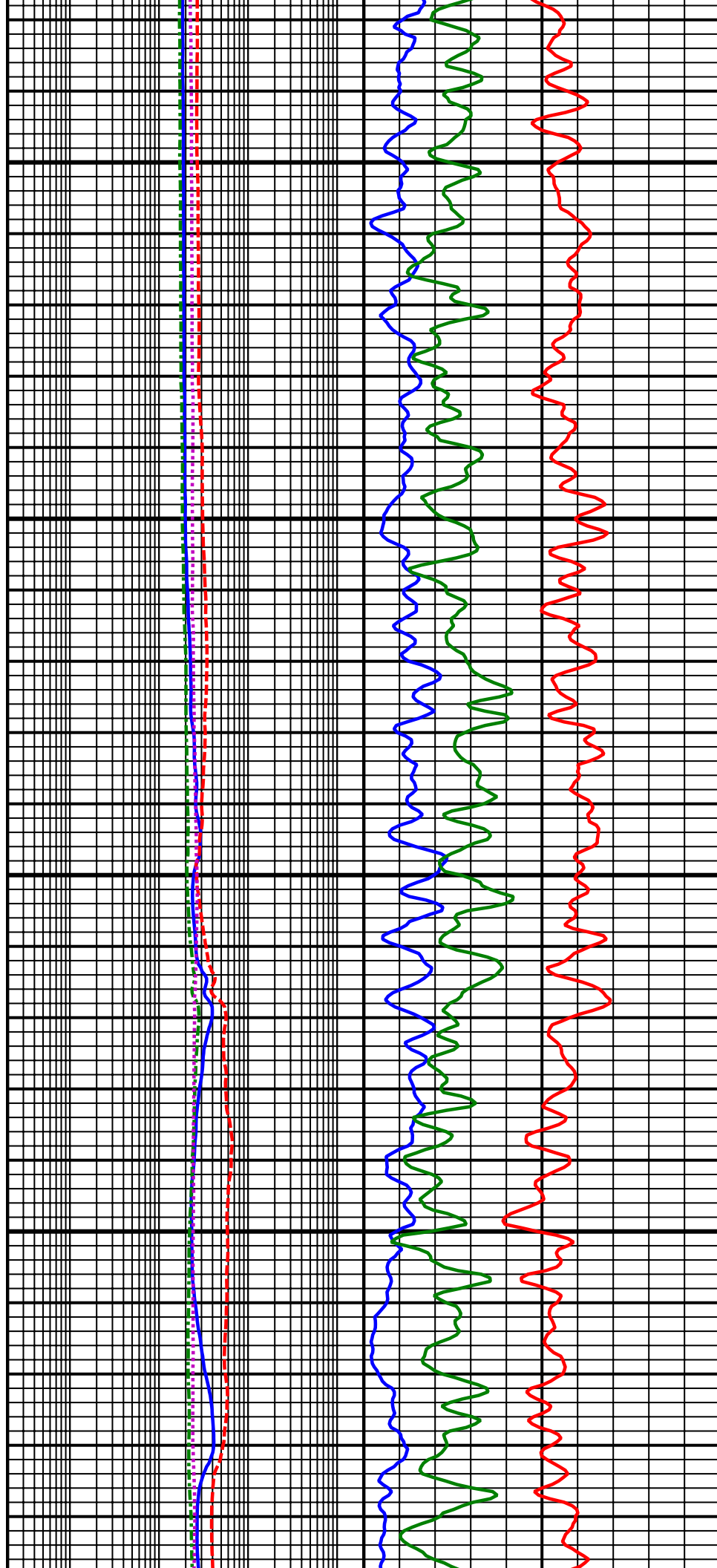
11200  
MD

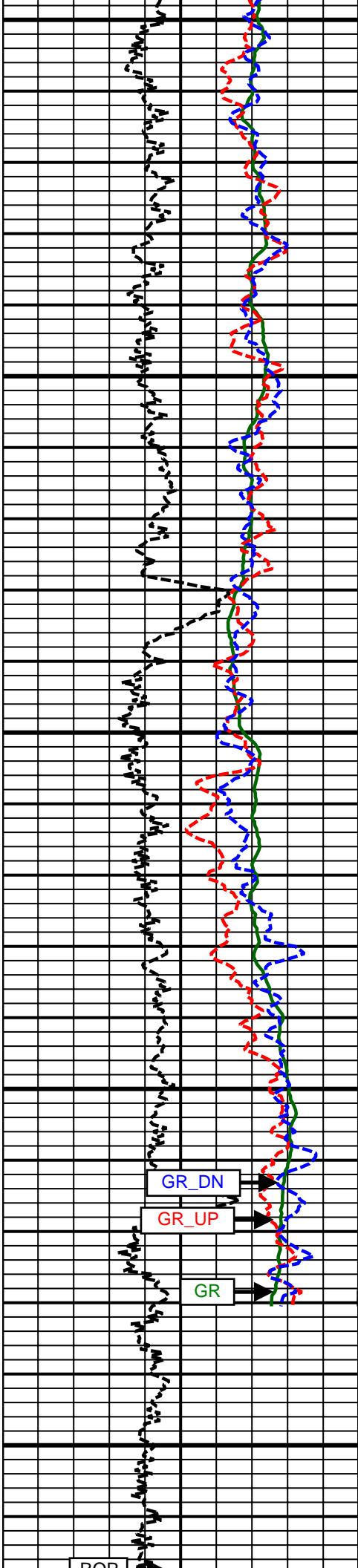




11300  
MD

11400  
MD

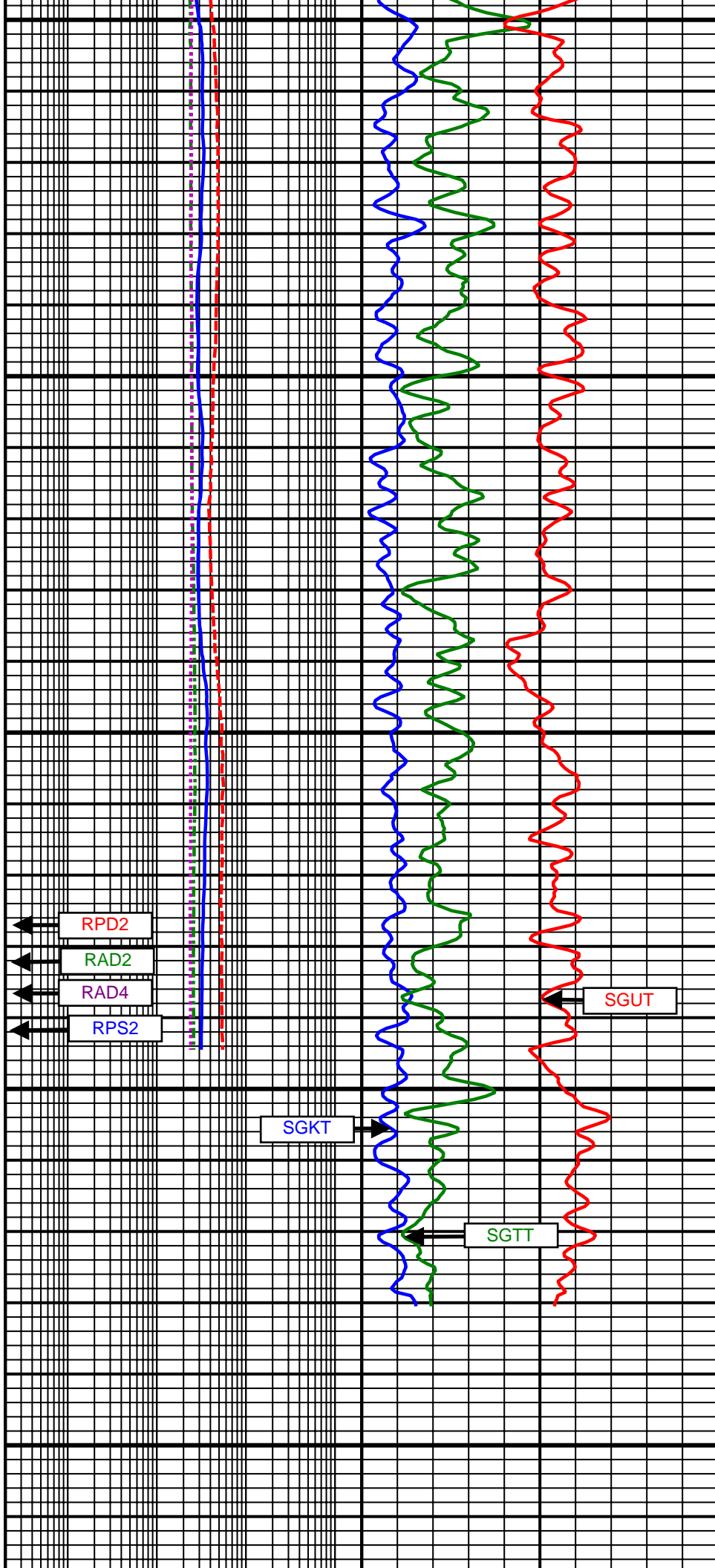




11500  
MD

11600  
MD

11700  
MD



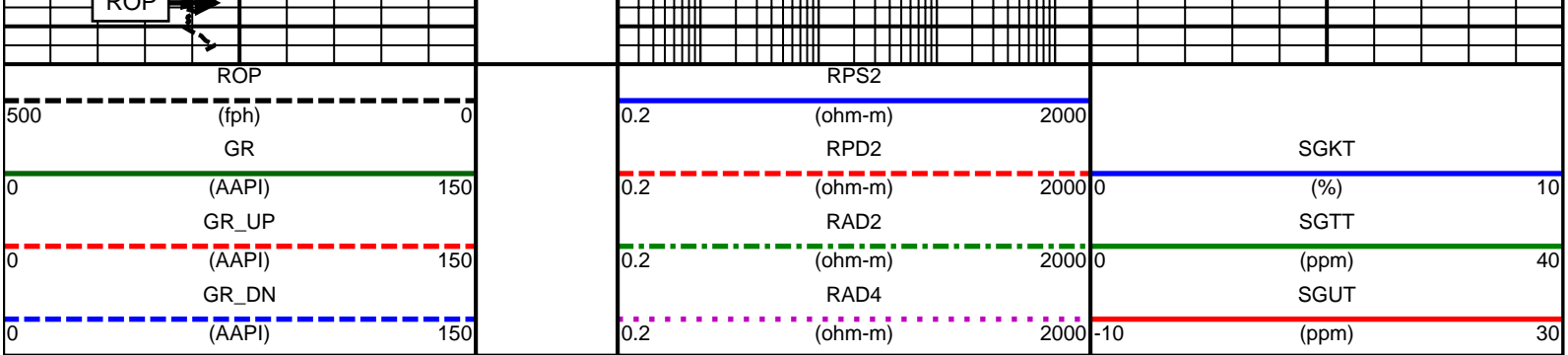
RPD2  
RAD2  
RAD4  
RPS2

SGKT

SGTT

SGUT





SURVEY						
Survey Calculation Method: Minimum Curvature						
Magnetic Reference	Target Direction	Total Magnetic Field	Magnetic Dip Angle	Magnetic Declination	Grid Convergence	Total Correction
True North	359.93 deg	52744 nT	66.81 deg	8.59 deg	0.00 deg	8.59 deg
Survey Tie-On	Depth	INC	AZ	TVD	NS	EW
	909.00 ft	0.18 deg	348.08 deg	909.00 ft	0.75 ft	-1.26 ft

				Well Head			
Depth (ft)	Inc (deg)	Azm (deg)	TVD (ft)	NS (ft)	EW (ft)	VSect (ft)	Dogleg (deg/100ft)
1014.00	0.41	240.46	1014.00	0.73	-1.62	0.73	0.47
1075.00	0.53	226.00	1075.00	0.42	-2.01	0.43	0.28
1165.00	2.18	230.21	1164.97	-0.96	-3.63	-0.96	1.84
1256.00	3.56	220.11	1255.85	-4.23	-6.78	-4.22	1.61
1347.00	5.32	225.34	1346.58	-9.36	-11.60	-9.34	1.98
1439.00	6.33	223.29	1438.10	-16.05	-18.11	-16.02	1.12
1530.00	7.80	228.31	1528.41	-23.81	-26.16	-23.77	1.75
1620.00	9.66	229.16	1617.36	-32.81	-36.44	-32.76	2.07
1711.00	9.50	229.54	1707.09	-42.67	-47.93	-42.61	0.19
1801.00	10.09	218.96	1795.79	-53.62	-58.54	-53.55	2.10
1891.00	11.60	216.18	1884.18	-67.06	-68.84	-66.97	1.78
1981.00	12.16	214.44	1972.25	-82.18	-79.54	-82.08	0.74
2072.00	14.29	215.11	2060.83	-99.27	-91.42	-99.16	2.35
2164.00	15.22	217.57	2149.80	-118.13	-105.31	-118.01	1.22
2256.00	15.85	221.38	2238.44	-137.13	-120.98	-136.99	1.30
2347.00	17.60	224.26	2325.59	-156.31	-138.80	-156.14	2.13
2443.00	16.26	219.32	2417.43	-177.11	-157.45	-176.91	2.05
2536.00	16.96	225.60	2506.56	-196.67	-175.39	-196.46	2.07
2628.00	16.64	222.09	2594.63	-215.84	-193.81	-215.60	1.16
2721.00	16.33	222.11	2683.81	-235.42	-211.50	-235.16	0.33
2814.00	15.50	220.47	2773.24	-254.57	-228.33	-254.29	1.01
2907.00	16.95	227.17	2862.54	-273.24	-246.34	-272.94	2.54
3000.00	18.06	224.84	2951.24	-292.68	-266.45	-292.35	1.41
3092.00	18.41	228.19	3038.62	-312.48	-287.34	-312.13	1.20
3187.00	18.83	226.27	3128.65	-333.08	-309.60	-332.70	0.78
3279.00	16.51	219.52	3216.31	-353.43	-328.65	-353.03	3.36
3364.00	16.49	224.26	3297.81	-371.39	-344.75	-370.96	1.58
3449.00	14.85	227.98	3379.65	-387.32	-361.27	-386.88	2.26
3535.00	13.25	229.04	3463.08	-401.16	-376.90	-400.70	1.88
3620.00	11.64	230.23	3546.08	-413.03	-390.84	-412.55	1.92
3706.00	11.85	229.57	3630.28	-424.30	-404.23	-423.81	0.29
3791.00	10.09	231.63	3713.72	-434.59	-416.72	-434.08	2.12
3877.00	9.85	229.98	3798.42	-443.99	-428.26	-443.47	0.43
3962.00	8.57	221.87	3882.33	-453.39	-438.05	-452.85	2.14
4047.00	8.74	227.75	3966.36	-462.44	-447.06	-461.90	1.06
4133.00	8.40	226.06	4051.40	-471.20	-456.42	-470.64	0.49
4218.00	7.69	235.93	4135.57	-478.69	-465.60	-478.12	1.82
4304.00	4.63	247.65	4221.07	-483.24	-473.58	-482.66	3.83
4389.00	3.21	252.22	4305.87	-485.27	-479.02	-484.68	1.71
4474.00	2.25	257.71	4390.77	-486.35	-482.92	-485.76	1.17
4560.00	1.79	268.25	4476.71	-486.75	-485.91	-486.16	0.69
4645.00	1.61	273.31	4561.68	-486.72	-488.43	-486.12	0.28

4730.00	1.81	274.05	4646.64	-486.56	-490.96	-485.96	0.24
4816.00	0.38	186.15	4732.62	-486.74	-492.34	-486.14	2.13
4901.00	1.75	130.55	4817.61	-487.87	-491.39	-487.27	1.84
4987.00	1.75	121.39	4903.57	-489.41	-489.27	-488.81	0.32
5072.00	1.44	115.63	4988.54	-490.54	-487.20	-489.95	0.41
5157.00	1.02	110.56	5073.52	-491.27	-485.53	-490.68	0.51
5243.00	0.88	97.04	5159.50	-491.62	-484.15	-491.03	0.31
5328.00	0.93	109.33	5244.49	-491.93	-482.86	-491.34	0.24
5413.00	1.20	101.27	5329.48	-492.33	-481.33	-491.74	0.36
5498.00	1.20	99.22	5414.46	-492.65	-479.58	-492.06	0.05
5584.00	1.00	96.55	5500.44	-492.88	-477.95	-492.29	0.24
5669.00	0.76	63.89	5585.43	-492.72	-476.70	-492.13	0.64
5755.00	0.90	67.49	5671.43	-492.21	-475.57	-491.62	0.17
5840.00	0.14	156.69	5756.42	-492.05	-474.91	-491.47	1.07
6011.00	0.36	63.23	5927.42	-492.00	-474.35	-491.42	0.23
6096.00	0.53	42.54	6012.42	-491.59	-473.84	-491.01	0.27
6182.00	0.89	45.75	6098.41	-490.83	-473.09	-490.25	0.42
6267.00	0.31	272.42	6183.41	-490.36	-472.85	-489.78	1.32
6352.00	0.43	230.75	6268.41	-490.55	-473.33	-489.97	0.34
6438.00	0.28	217.76	6354.41	-490.92	-473.71	-490.34	0.20
6607.00	0.40	173.77	6523.40	-491.83	-473.90	-491.25	0.16
6695.00	1.19	2.95	6611.40	-491.22	-473.82	-490.65	1.80
6780.00	7.23	352.95	6696.13	-485.03	-474.43	-484.45	7.13
6866.00	15.87	1.67	6780.31	-467.87	-474.75	-467.29	10.22
6951.00	23.62	4.21	6860.26	-439.23	-473.16	-438.65	9.17
7037.00	32.30	359.56	6936.15	-398.99	-472.07	-398.41	10.40
7122.00	42.34	1.88	7003.67	-347.53	-471.30	-346.96	11.93
7207.00	53.27	1.40	7060.67	-284.68	-469.52	-284.11	12.87
7293.00	63.94	357.77	7105.42	-211.40	-470.19	-210.83	12.92
7378.00	73.05	354.30	7136.55	-132.61	-475.72	-132.03	11.37
7463.00	79.74	354.40	7156.54	-50.44	-483.85	-49.85	7.87
7505.00	85.18	357.20	7162.05	-8.94	-486.89	-8.34	14.54
7615.00	91.23	1.89	7165.49	100.92	-487.76	101.52	6.96
7700.00	90.56	1.80	7164.17	185.87	-485.02	186.46	0.80
7871.00	91.94	359.95	7160.44	356.80	-482.41	357.39	1.35
8020.00	90.56	3.45	7157.18	505.67	-477.99	506.25	2.52
8105.00	90.31	3.58	7156.54	590.51	-472.78	591.08	0.33
8190.00	90.88	3.48	7155.66	675.34	-467.55	675.91	0.68
8276.00	90.06	3.56	7154.95	761.17	-462.27	761.74	0.96
8361.00	89.63	3.03	7155.18	846.03	-457.38	846.59	0.80
8447.00	89.07	2.48	7156.16	931.93	-453.25	932.48	0.91
8532.00	88.95	0.55	7157.63	1016.88	-451.00	1017.43	2.27
8618.00	88.89	359.93	7159.25	1102.86	-450.64	1103.41	0.72
8703.00	89.21	359.07	7160.66	1187.85	-451.38	1188.40	1.08
8789.00	89.63	358.64	7161.53	1273.83	-453.10	1274.38	0.70
8874.00	89.69	358.57	7162.03	1358.80	-455.17	1359.35	0.11
8959.00	89.88	358.80	7162.35	1443.78	-457.12	1444.33	0.35
9045.00	89.82	359.17	7162.57	1529.76	-458.64	1530.32	0.44
9130.00	89.94	358.98	7162.75	1614.75	-460.02	1615.31	0.26
9216.00	90.09	358.54	7162.73	1700.73	-461.88	1701.29	0.54
9301.00	90.26	358.54	7162.47	1785.70	-464.04	1786.27	0.20
9386.00	90.18	358.14	7162.14	1870.67	-466.51	1871.24	0.48
9472.00	90.49	357.98	7161.64	1956.62	-469.42	1957.19	0.41
9557.00	90.31	358.72	7161.05	2041.58	-471.86	2042.15	0.90
9642.00	89.56	359.25	7161.14	2126.56	-473.37	2127.14	1.08
9728.00	89.75	358.86	7161.66	2212.55	-474.79	2213.13	0.50
9813.00	89.51	359.39	7162.21	2297.54	-476.09	2298.12	0.68
9898.00	88.77	359.64	7163.49	2382.52	-476.81	2383.11	0.92
9984.00	89.26	359.41	7164.97	2468.51	-477.52	2469.09	0.63
10069.00	90.18	359.60	7165.38	2553.50	-478.25	2554.09	1.11
10155.00	89.74	0.13	7165.44	2639.50	-478.46	2640.09	0.80

10240.00	90.25	0.80	7165.45	2724.50	-477.77	2725.08	0.99
10325.00	91.32	1.36	7164.28	2809.47	-476.16	2810.05	1.42
10410.00	91.23	1.58	7162.39	2894.43	-473.98	2895.00	0.28
10496.00	89.69	2.51	7161.70	2980.36	-470.92	2980.94	2.09
10581.00	88.71	1.80	7162.89	3065.29	-467.72	3065.86	1.42
10667.00	87.96	1.50	7165.39	3151.22	-465.24	3151.79	0.94
10752.00	87.97	0.99	7168.41	3236.15	-463.40	3236.71	0.60
10838.00	87.04	0.28	7172.15	3322.06	-462.45	3322.62	1.36
10923.00	87.53	359.35	7176.18	3406.96	-462.72	3407.53	1.24
11009.00	88.34	358.14	7179.27	3492.88	-464.60	3493.45	1.69
11094.00	88.40	358.80	7181.69	3577.82	-466.87	3578.39	0.78
11179.00	87.10	358.21	7185.03	3662.72	-469.09	3663.29	1.68
11264.00	86.91	357.55	7189.47	3747.55	-472.23	3748.12	0.81
11350.00	87.41	358.05	7193.73	3833.38	-475.52	3833.96	0.82
11435.00	87.66	358.01	7197.39	3918.25	-478.44	3918.83	0.30
11519.00	87.97	357.82	7200.59	4002.13	-481.50	4002.72	0.43
11605.00	88.27	357.91	7203.41	4088.03	-484.70	4088.61	0.36
11664.00	88.46	357.93	7205.09	4146.96	-486.84	4147.55	0.32
Projected to Total Depth:							
11722.00	88.46	357.93	7206.65	4204.90	-488.93	4205.50	0.00

---

\*Weatherford Surveys from 1014 ft MD to 11664 ft MD.\*

\*TD at 11722 ft MD.\*

The total correction is 8.59 deg relative to True North.

---



# Weatherford®

Final Print

COMPANY	<u>Anadarko</u>		
WELL	<u>Farley 30N-23HZ</u>		
FIELD	<u>Wattenberg</u>		
RIG	<u>XTREME 23</u>		
LOC.	<u>Colorado</u>	COUNTY	<u>Weld</u>