

T10N, R58W, 6th P.M.

2010 UELS Alum. Cap,
Flush W/Ground
Lat: 40.816906°
Long: 103.841850°

2012 UELS Alum. Cap,
0.1' High, PLS 28285
Lat: 40.816942°
Long: 103.832336°

2010 UELS Alum.
Cap, 0.3' High
Lat: 40.816975°
Long: 103.822819°

WHITING OIL & GAS CORP.

Well location, RAZOR #26L-3503A (SURFACE LOCATION), located as shown in the NW 1/4 SW 1/4 of Section 26, T10N, R58W, 6th P.M., Weld County, Colorado.

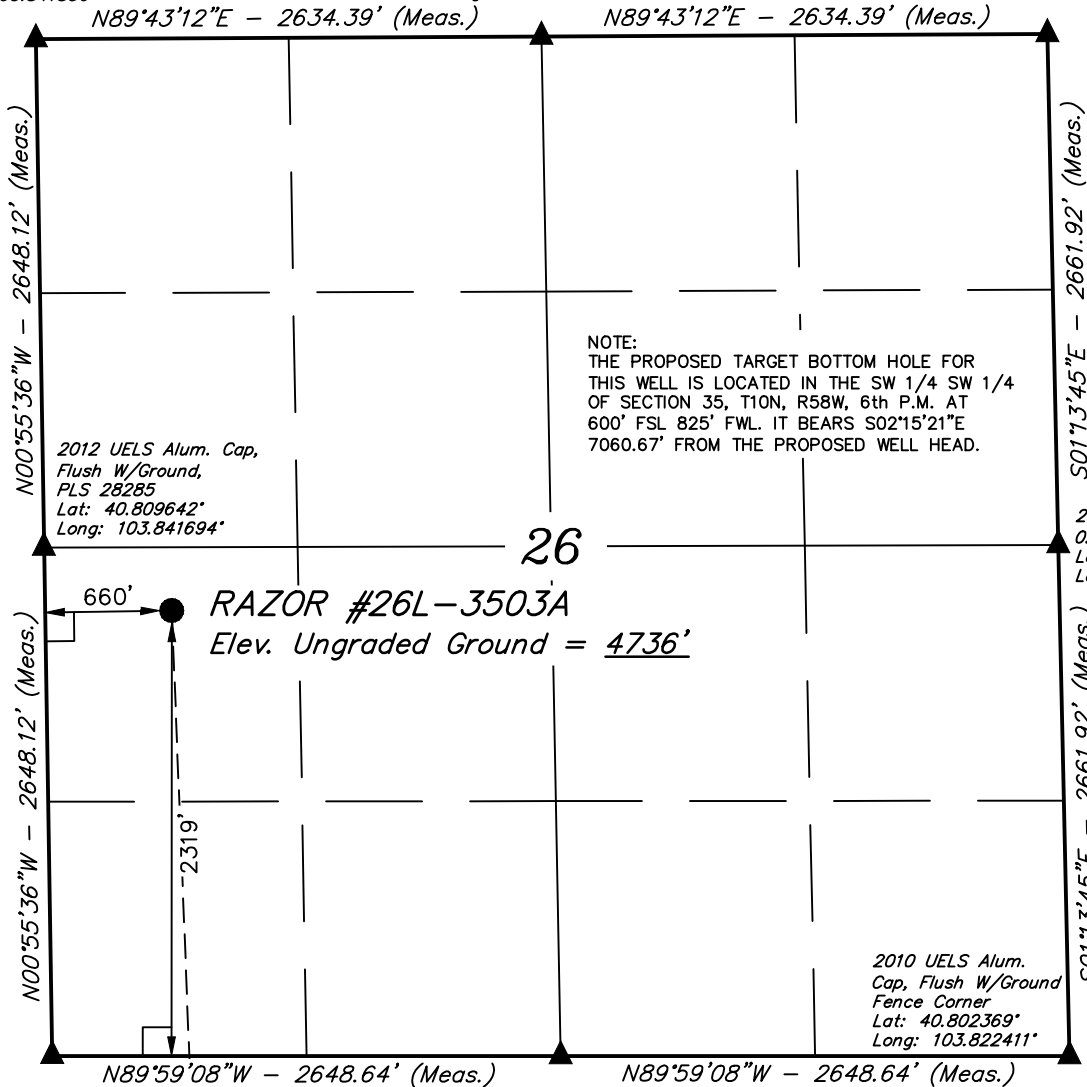
BASIS OF ELEVATION

SPOT ELEVATION LOCATED AT THE NORTHEAST CORNER OF SECTION 15, T9N, R58W, 6th P.M. TAKEN FROM THE GATEHOOK SPRING, QUADRANGLE, COLORADO, WELD COUNTY, 7.5 MINUTE QUAD (TOPOGRAPHIC MAP) PUBLISHED BY THE UNITED STATES DEPARTMENT OF THE INTERIOR, GEOLOGICAL SURVEY. SAID ELEVATION IS MARKED AS BEING 4679 FEET.

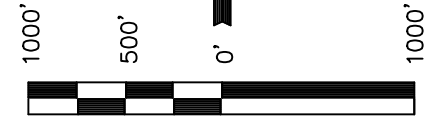
BASIS OF BEARINGS

BASIS OF BEARINGS IS A G.P.S. OBSERVATION.

NOTE:
THE PROPOSED TARGET BOTTOM HOLE FOR THIS WELL IS LOCATED IN THE SW 1/4 SW 1/4 OF SECTION 35, T10N, R58W, 6th P.M. AT 600' FSL 825' FWL. IT BEARS S02°15'21"E 7060.67' FROM THE PROPOSED WELL HEAD.



2012 UELS Alum. Cap,
0.1' High
Lat: 40.809672°
Long: 103.822617°



SCALE

CERTIFICATE

THIS IS TO CERTIFY THAT THE ABOVE MAP WAS PREPARED FROM FIELD NOTES OF ACTUAL SURVEYS MADE BY ME OR UNDER MY SUPERVISION AND THAT THE SAME ARE TRUE AND CORRECT TO THE BEST OF MY KNOWLEDGE AND BELIEF.

[Signature]
REGISTERED LAND SURVEYOR
REGISTRATION NO. 17492
STATE OF COLORADO
09-01-13

REVISED: 06-29-13 J.S.
REVISED: 04-15-13 J.S.
REVISED: 03-19-13
REVISED: 05-23-12

2010 UELS Alum. Cap,
Flush W/Ground,
E/W Fence
Lat: 40.802375°
Long: 103.841542°

2012 Alum. Cap,
Flush W/Ground
Lat: 40.802372°
Long: 103.831975°

LEGEND:

└─┘ = 90° SYMBOL

● = PROPOSED WELL HEAD.

▲ = SECTION CORNERS LOCATED.

○ Target Bottom Hole

PDOP = 1.3

NAD 83 (SURFACE LOCATION)
LATITUDE = 40°48'31.46" (40.808739)
LONGITUDE = 103°50'21.45" (103.839292)
NAD 27 (SURFACE LOCATION)
LATITUDE = 40°48'31.51" (40.808753)
LONGITUDE = 103°50'19.64" (103.838789)

UINTAH ENGINEERING & LAND SURVEYING
85 SOUTH 200 EAST - VERNAL, UTAH 84078
(435) 789-1017

SCALE 1" = 1000'	DATE SURVEYED: 04-30-12	DATE DRAWN: 05-07-12
PARTY J.H. D.L.S. C.M. H.K.W.	REFERENCES G.L.O. PLAT	
WEATHER WARM	FILE WHITING OIL & GAS CORP.	

Surface
Location

T10N, R58W, 6th. P.M.

WHITING OIL & GAS CORP.

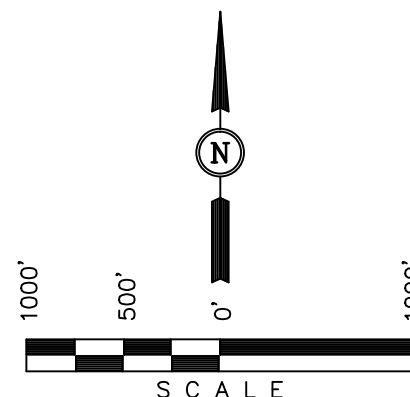
Well location, RAZOR #26L-3503A (TARGET
BOTTOM HOLE), located as shown in the SW 1/4
SW 1/4 of Section 35, T10N, R58W, 6th P.M.,
Weld County, Colorado.

BASIS OF ELEVATION

SPOT ELEVATION LOCATED AT THE NORTHEAST CORNER OF
SECTION 15, T9N, R58W, 6th P.M. TAKEN FROM THE
GATEHOOK SPRING, QUADRANGLE, COLORADO, WELD COUNTY,
7.5 MINUTE QUAD (TOPOGRAPHIC MAP) PUBLISHED BY THE
UNITED STATES DEPARTMENT OF THE INTERIOR, GEOLOGICAL
SURVEY. SAID ELEVATION IS MARKED AS BEING 4679 FEET.

BASIS OF BEARINGS

BASIS OF BEARINGS IS A G.P.S. OBSERVATION.



CERTIFICATE

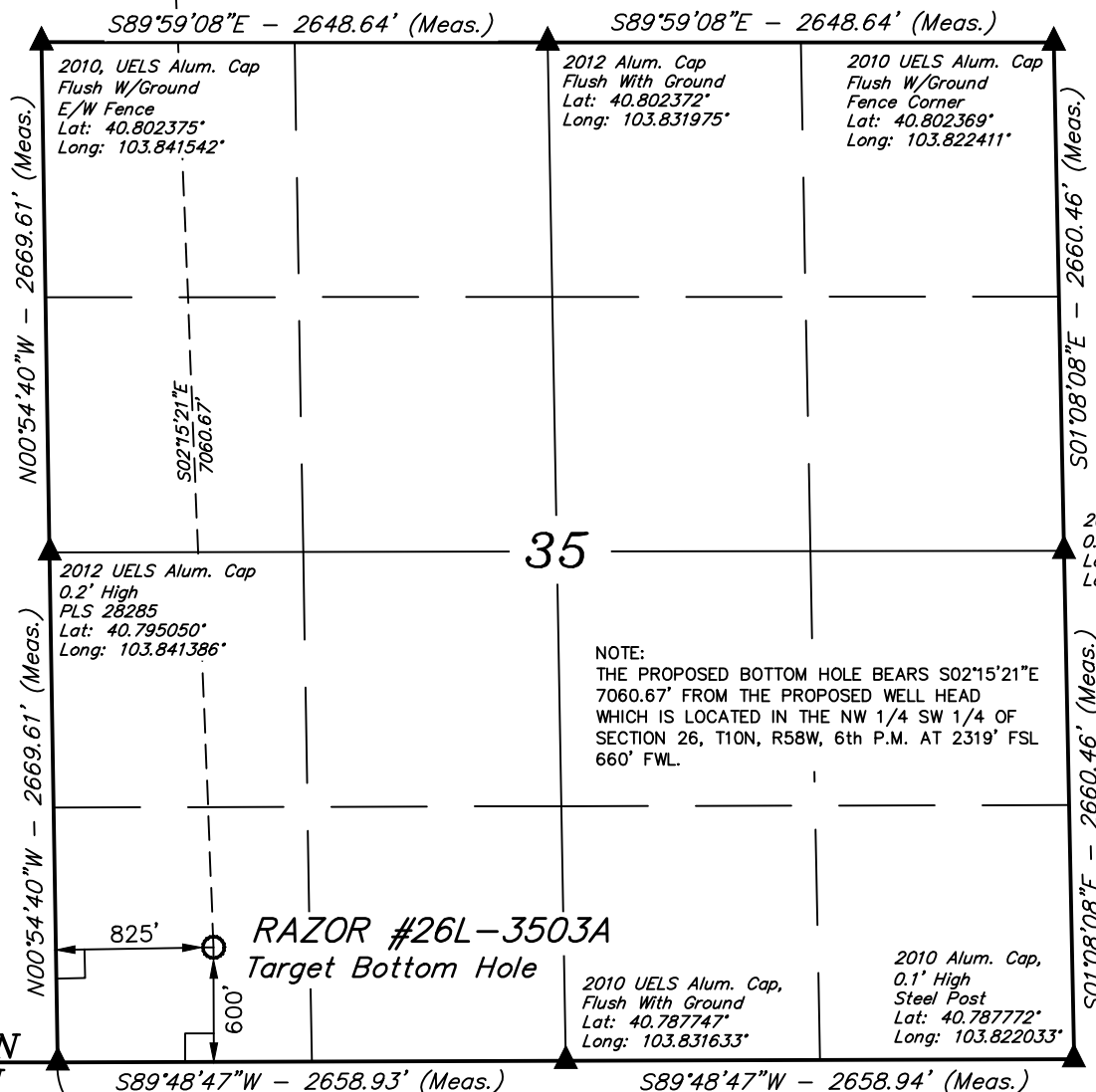
THIS IS TO CERTIFY THAT THE ABOVE MAP WAS PREPARED FROM
FIELD NOTES OF ACTUAL SURVEYS MADE BY ME OR UNDER MY
SUPERVISION AND THAT THE SAME ARE TRUE AND CORRECT TO THE
BEST OF MY KNOWLEDGE AND BELIEF.

REGISTERED LAND SURVEYOR
REGISTRATION NO. 17492
STATE OF COLORADO
04-16-13

REVISED: 04-15-13 J.S.
REVISED: 03-19-13
REVISED: 05-23-12

UINTAH ENGINEERING & LAND SURVEYING
85 SOUTH 200 EAST - VERNAL, UTAH 84078
(435) 789-1017

SCALE 1" = 1000'	DATE SURVEYED: 04-30-12	DATE DRAWN: 05-07-12
PARTY J.H. D.L.S. C.M. H.K.W.	REFERENCES G.L.O. PLAT	
WEATHER WARM	FILE WHITING OIL & GAS CORP.	



T10N
T9N

LEGEND:

- └─┘ = 90° SYMBOL
- = PROPOSED WELL HEAD.
- ▲ = SECTION CORNERS LOCATED.

NAD 83 (TARGET BOTTOM HOLE)	
LATITUDE = 40°47'21.76" (40.789378)	
LONGITUDE = 103°50'17.84" (103.838289)	
NAD 27 (TARGET BOTTOM HOLE)	
LATITUDE = 40°47'21.81" (40.789392)	
LONGITUDE = 103°50'16.03" (103.837786)	