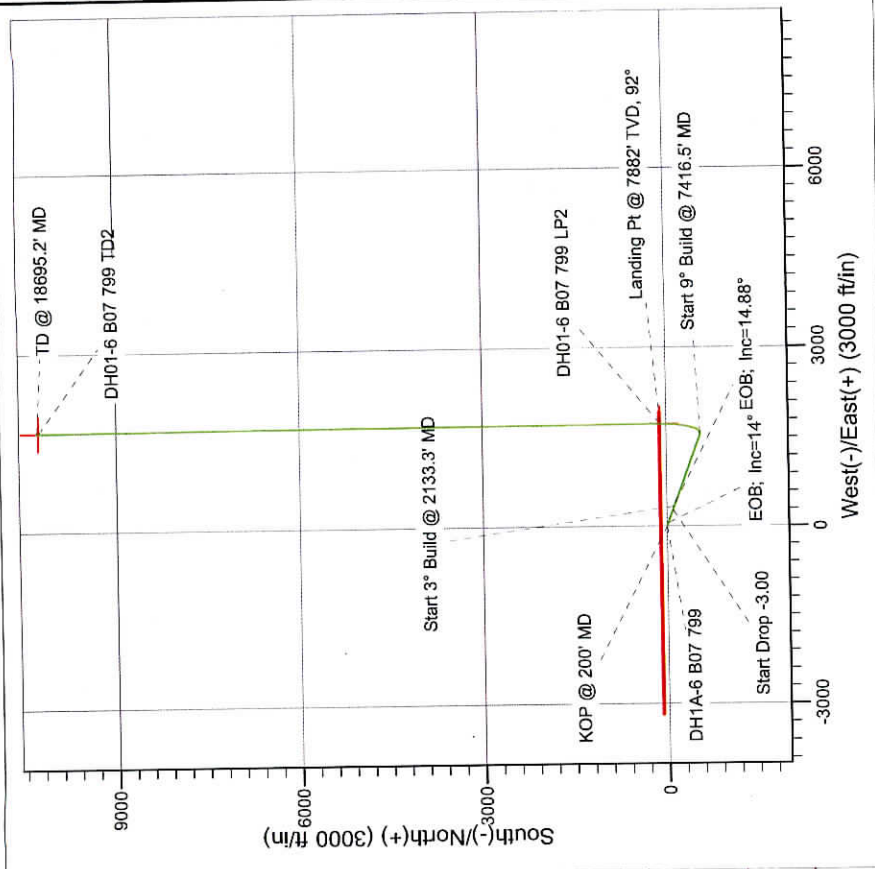
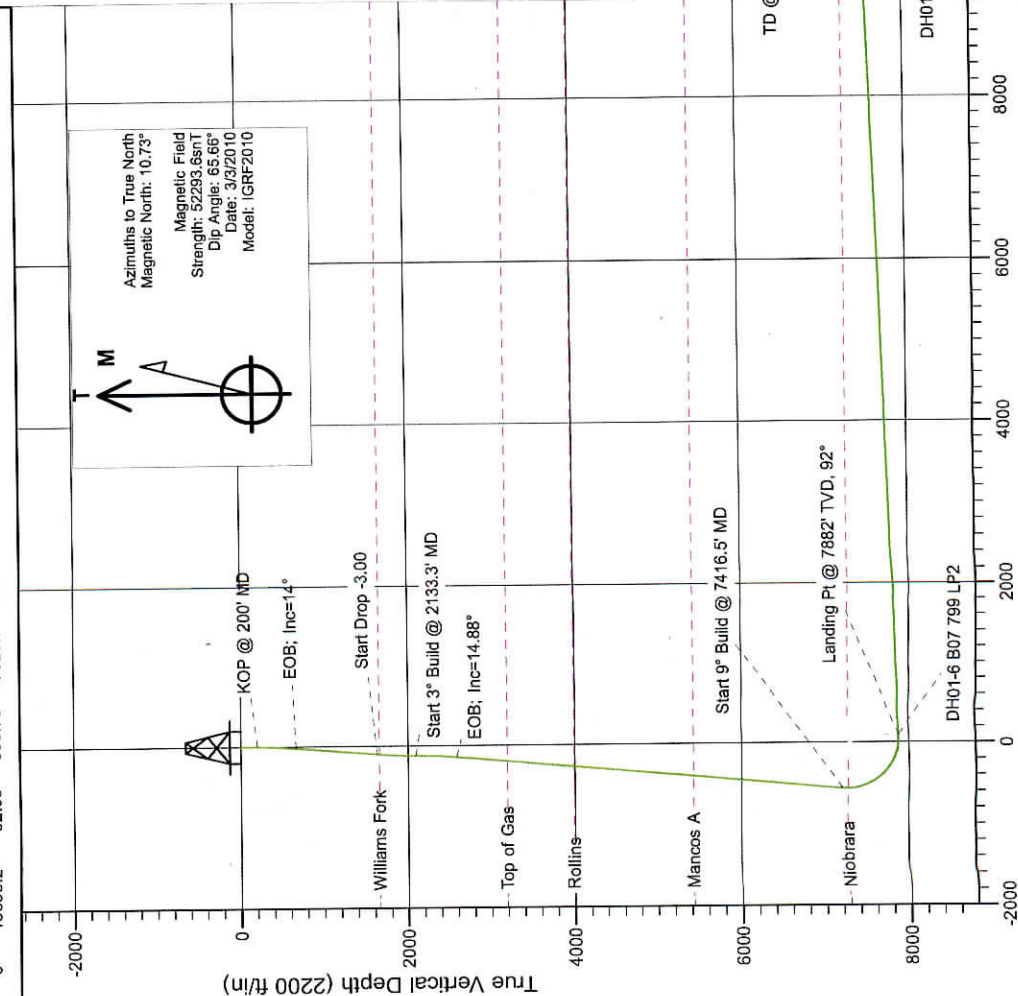


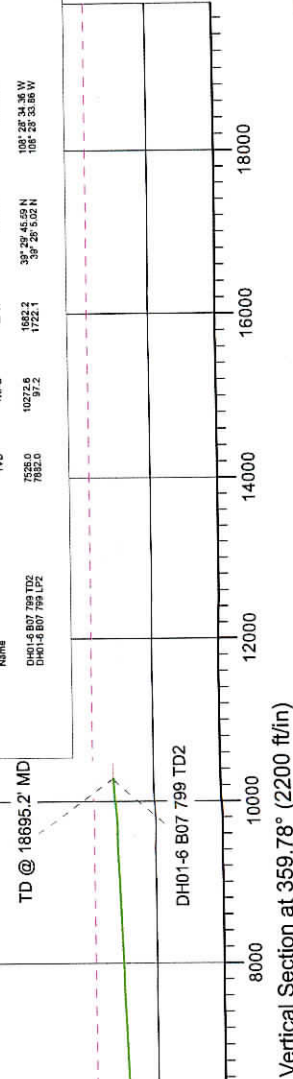


Project: Kimball Mtn
Site: Section 7 (B07 799)
Well: DH1A-6 B07 799
Wellbore: Hz
Design: Plan #8

Sec	MD	Inc	Azi	TVD	+N/-S	+E/-W	Dleg	TFace	Vsect	Target
1	0.0	0.00	0.00	0.0	0.0	0.0	0.00	0.00	0.0	
2	200.0	0.00	0.00	200.0	0.0	0.0	0.00	0.00	0.0	
3	666.7	14.00	109.36	662.0	-18.8	0.0	3.00	109.36	-19.0	
4	1666.7	14.00	109.36	1632.3	-99.0	281.8	3.00	109.36	-100.1	
5	2133.3	0.00	0.00	2094.4	-117.8	335.3	3.00	180.00	-119.1	
6	2629.4	14.88	109.95	2584.8	-139.7	395.5	3.00	109.95	-141.2	
7	7416.5	14.88	109.95	7211.4	-559.1	1551.1	0.00	0.00	-565.1	DH01-6
8	8494.5	92.00	359.78	7882.0	97.2	1722.1	9.00	-109.06	90.6	DH01-6
9	18695.2	92.00	359.78	7526.0	10291.6	1683.0	0.00	0.00	10285.1	



Name	Type	Target	TVD	ASWTH	Origin	Depth	N/S	E/W	From	TVD	Longitude
CH-45	807	795	1192				0.0	0.0	0.0		104-24-34.36 W
CH-46	807	795	1192				0.0	0.0	0.0		104-24-34.36 W
CH-47	807	795	1192				0.0	0.0	0.0		104-24-34.36 W
CH-48	807	795	1192				0.0	0.0	0.0		104-24-34.36 W
CH-49	807	795	1192				0.0	0.0	0.0		104-24-34.36 W
CH-50	807	795	1192				0.0	0.0	0.0		104-24-34.36 W
CH-51	807	795	1192				0.0	0.0	0.0		104-24-34.36 W
CH-52	807	795	1192				0.0	0.0	0.0		104-24-34.36 W
CH-53	807	795	1192				0.0	0.0	0.0		104-24-34.36 W
CH-54	807	795	1192				0.0	0.0	0.0		104-24-34.36 W
CH-55	807	795	1192				0.0	0.0	0.0		104-24-34.36 W
CH-56	807	795	1192				0.0	0.0	0.0		104-24-34.36 W
CH-57	807	795	1192				0.0	0.0	0.0		104-24-34.36 W
CH-58	807	795	1192				0.0	0.0	0.0		104-24-34.36 W
CH-59	807	795	1192				0.0	0.0	0.0		104-24-34.36 W
CH-60	807	795	1192				0.0	0.0	0.0		104-24-34.36 W
CH-61	807	795	1192				0.0	0.0	0.0		104-24-34.36 W
CH-62	807	795	1192				0.0	0.0	0.0		104-24-34.36 W
CH-63	807	795	1192				0.0	0.0	0.0		104-24-34.36 W
CH-64	807	795	1192				0.0	0.0	0.0		104-24-34.36 W
CH-65	807	795	1192				0.0	0.0	0.0		104-24-34.36 W
CH-66	807	795	1192				0.0	0.0	0.0		104-24-34.36 W
CH-67	807	795	1192				0.0	0.0	0.0		104-24-34.36 W
CH-68	807	795	1192				0.0	0.0	0.0		104-24-34.36 W
CH-69	807	795	1192				0.0	0.0	0.0		104-24-34.36 W
CH-70	807	795	1192				0.0	0.0	0.0		104-24-34.36 W
CH-71	807	795	1192				0.0	0.0	0.0		104-24-34.36 W
CH-72	807	795	1192				0.0	0.0	0.0		104-24-34.36 W
CH-73	807	795	1192				0.0	0.0	0.0		104-24-34.36 W
CH-74	807	795	1192				0.0	0.0	0.0		104-24-34.36 W
CH-75	807	795	1192				0.0	0.0	0.0		104-24-34.36 W
CH-76	807	795	1192				0.0	0.0	0.0		104-24-34.36 W
CH-77	807	795	1192				0.0	0.0	0.0		104-24-34.36 W
CH-78	807	795	1192				0.0	0.0	0.0		104-24-34.36 W
CH-79	807	795	1192				0.0	0.0	0.0		104-24-34.36 W
CH-80	807	795	1192				0.0	0.0	0.0		104-24-34.36 W</



Cathedral Energy Services

Planning Report

Database: EDM 5000.1 US Multi Users DB
Company: EnCana Oil & Gas (USA) Inc
Project: Kimball Mtn
Site: Section 7 (B07 799)
Well: DH1A-6 B07 799
Wellbore: Hz
Design: Plan #8

Local Co-ordinate Reference: Well DH1A-6 B07 799
TVD Reference: WELL @ 6670.0ft (Original Well Elev)
MD Reference: WELL @ 6670.0ft (Original Well Elev)
North Reference: True
Survey Calculation Method: Minimum Curvature

Project: Kimball Mtn
Map System: US State Plane 1983
Geo Datum: North American Datum 1983
Map Zone: Colorado Central Zone
System Datum: Mean Sea Level

Site: Section 7 (B07 799)
Site Position: Northing: 1,609,095.96 ft Latitude: 39° 28' 4.09 N
From: Lat/Long Easting: 2,158,273.04 ft Longitude: 108° 28' 55.50 W
Position Uncertainty: 0.0 ft Slot Radius: 13.200 in Grid Convergence: -1.88 °

Well: DH1A-6 B07 799
Well Position: +N/-S 0.0 ft Northing: 1,609,093.74 ft Latitude: 39° 28' 4.06 N
+E/-W 0.0 ft Easting: 2,158,247.86 ft Longitude: 108° 28' 55.82 W
Position Uncertainty: 0.0 ft Wellhead Elevation: ft Ground Level: 6,648.0 ft

Wellbore: Hz
Magnetics: Model Name Sample Date Declination (°) Dip Angle (°) Field Strength (nT)
 IGRF2010 3/3/2010 10.73 65.66 52,294

Design: Plan #8
Audit Notes:
Version: Phase: PROTOTYPE Tie On Depth: 0.0 *
Vertical Section: Depth From (TVD) +N/-S +E/-W Direction
 (ft) (ft) (ft) (°)
 0.0 0.0 0.0 359.78

Measured Depth (ft)	Inclination (°)	Azimuth (°)	Vertical Depth (ft)	+N/-S (ft)	+E/-W (ft)	Dogleg Rate (°/100ft)	Build Rate (°/100ft)	Turn Rate (°/100ft)	TFO (°)	Target
0.0	0.00	0.00	0.0	0.0	0.0	0.00	0.00	0.00	0.00	
200.0	0.00	0.00	200.0	0.0	0.0	0.00	0.00	0.00	0.00	
666.7	14.00	109.36	662.0	-18.8	53.5	3.00	3.00	0.00	109.36	
1,666.7	14.00	109.36	1,632.3	-99.0	281.8	0.00	0.00	0.00	0.00	
2,133.3	0.00	0.00	2,094.4	-117.8	335.3	3.00	-3.00	0.00	180.00	
2,629.4	14.88	109.95	2,584.8	-139.7	395.5	3.00	3.00	0.00	109.95	
7,416.5	14.88	109.95	7,211.4	-559.1	1,551.1	0.00	0.00	0.00	0.00	
8,494.5	92.00	359.78	7,882.0	97.2	1,722.1	9.00	7.15	-10.22	-109.06	DH01-6 B07-799 LP2
18,695.2	92.00	359.78	7,526.0	10,291.6	1,683.0	0.00	0.00	0.00	0.00	DH01-6 B07 799 TD2

Cathedral Energy Services

Planning Report

Database: EDM 5000.1 US Multi Users DB
Company: EnCana Oil & Gas (USA) Inc
Project: Kimball Mtn
Site: Section 7 (B07 799)
Well: DH1A-6 B07 799
Wellbore: Hz
Design: Plan #8

Local Co-ordinate Reference:
TVD Reference:
MD Reference:
North Reference:
Survey Calculation Method:

Well DH1A-6 B07 799
 WELL @ 6670.0ft (Original Well Elev)
 WELL @ 6670.0ft (Original Well Elev)
 True
 Minimum Curvature

Planned Survey

Measured Depth (ft)	Inclination (°)	Azimuth (°)	Vertical Depth (ft)	+N/-S (ft)	+E/-W (ft)	Vertical Section (ft)	Dogleg Rate (°/100ft)	Build Rate (°/100ft)	Comments / Formations
0.0	0.00	0.00	0.0	0.0	0.0	0.0	0.00	0.00	
100.0	0.00	0.00	100.0	0.0	0.0	0.0	0.00	0.00	
200.0	0.00	0.00	200.0	0.0	0.0	0.0	0.00	0.00	KOP @ 200' MD
300.0	3.00	109.36	300.0	-0.9	2.5	-0.9	3.00	3.00	
400.0	6.00	109.36	399.6	-3.5	9.9	-3.5	3.00	3.00	
500.0	9.00	109.36	498.8	-7.8	22.2	-7.9	3.00	3.00	
600.0	12.00	109.36	597.1	-13.8	39.4	-14.0	3.00	3.00	
666.7	14.00	109.36	662.0	-18.8	53.5	-19.0	3.00	3.00	EOB; Inc=14°
700.0	14.00	109.36	694.4	-21.5	61.1	-21.7	0.00	0.00	
800.0	14.00	109.36	791.4	-29.5	84.0	-29.8	0.00	0.00	
900.0	14.00	109.36	888.4	-37.5	106.8	-37.9	0.00	0.00	
1,000.0	14.00	109.36	985.5	-45.5	129.6	-46.0	0.00	0.00	
1,100.0	14.00	109.36	1,082.5	-53.6	152.4	-54.1	0.00	0.00	
1,200.0	14.00	109.36	1,179.5	-61.6	175.3	-62.3	0.00	0.00	
1,300.0	14.00	109.36	1,276.6	-69.6	198.1	-70.4	0.00	0.00	
1,400.0	14.00	109.36	1,373.6	-77.6	220.9	-78.5	0.00	0.00	
1,500.0	14.00	109.36	1,470.6	-85.6	243.7	-86.6	0.00	0.00	
1,600.0	14.00	109.36	1,567.6	-93.7	266.5	-94.7	0.00	0.00	
1,666.7	14.00	109.36	1,632.3	-99.0	281.8	-100.1	0.00	0.00	Start Drop -3.00
1,695.1	13.15	109.36	1,660.0	-101.2	288.1	-102.3	3.00	-3.00	Williams Fork
1,700.0	13.00	109.36	1,664.7	-101.6	289.1	-102.7	3.00	-3.00	
1,800.0	10.00	109.36	1,762.7	-108.2	307.9	-109.4	3.00	-3.00	
1,900.0	7.00	109.36	1,861.6	-113.1	321.9	-114.3	3.00	-3.00	
2,000.0	4.00	109.36	1,961.1	-116.3	330.9	-117.5	3.00	-3.00	
2,100.0	1.00	109.36	2,061.0	-117.7	335.0	-119.0	3.00	-3.00	
2,133.3	0.00	0.00	2,094.4	-117.8	335.3	-119.1	3.00	-3.00	Start 3° Build @ 2133.3' MD
2,200.0	2.00	109.95	2,161.0	-118.2	336.4	-119.5	3.00	3.00	
2,300.0	5.00	109.95	2,260.8	-120.3	342.1	-121.6	3.00	3.00	
2,400.0	8.00	109.95	2,360.2	-124.2	352.8	-125.5	3.00	3.00	
2,500.0	11.00	109.95	2,458.8	-129.8	368.3	-131.2	3.00	3.00	
2,600.0	14.00	109.95	2,556.4	-137.2	388.6	-138.7	3.00	3.00	
2,629.4	14.88	109.95	2,584.8	-139.7	395.5	-141.2	3.00	3.00	EOB; Inc=14.88°
2,700.0	14.88	109.95	2,653.1	-145.9	412.5	-147.4	0.00	0.00	
2,800.0	14.88	109.95	2,749.8	-154.6	436.7	-156.3	0.00	0.00	
2,900.0	14.88	109.95	2,846.4	-163.4	460.8	-165.1	0.00	0.00	
3,000.0	14.88	109.95	2,943.0	-172.1	485.0	-174.0	0.00	0.00	
3,100.0	14.88	109.95	3,039.7	-180.9	509.1	-182.9	0.00	0.00	
3,200.0	14.88	109.95	3,136.3	-189.7	533.2	-191.7	0.00	0.00	
3,256.6	14.88	109.95	3,191.0	-194.6	546.9	-196.7	0.00	0.00	Top of Gas
3,300.0	14.88	109.95	3,233.0	-198.4	557.4	-200.6	0.00	0.00	
3,400.0	14.88	109.95	3,329.6	-207.2	581.5	-209.4	0.00	0.00	
3,500.0	14.88	109.95	3,426.3	-215.9	605.7	-218.3	0.00	0.00	
3,600.0	14.88	109.95	3,522.9	-224.7	629.8	-227.1	0.00	0.00	
3,700.0	14.88	109.95	3,619.6	-233.5	653.9	-236.0	0.00	0.00	
3,800.0	14.88	109.95	3,716.2	-242.2	678.1	-244.8	0.00	0.00	
3,900.0	14.88	109.95	3,812.9	-251.0	702.2	-253.7	0.00	0.00	
4,000.0	14.88	109.95	3,909.5	-259.8	726.4	-262.5	0.00	0.00	
4,084.3	14.88	109.95	3,991.0	-267.1	746.7	-270.0	0.00	0.00	Rollins
4,100.0	14.88	109.95	4,006.2	-268.5	750.5	-271.4	0.00	0.00	
4,200.0	14.88	109.95	4,102.8	-277.3	774.6	-280.3	0.00	0.00	
4,300.0	14.88	109.95	4,199.4	-286.0	798.8	-289.1	0.00	0.00	
4,400.0	14.88	109.95	4,296.1	-294.8	822.9	-298.0	0.00	0.00	

Cathedral Energy Services

Planning Report

Database: EDM 5000.1 US Multi Users DB
Company: EnCana Oil & Gas (USA) Inc
Project: Kimball Mtn
Site: Section 7 (B07 799)
Well: DH1A-6 B07 799
Wellbore: Hz
Design: Plan #8

Local Co-ordinate Reference:
TVD Reference:
MD Reference:
North Reference:
Survey Calculation Method:

Well DH1A-6 B07 799
WELL @ 6670.0ft (Original Well Elev)
WELL @ 6670.0ft (Original Well Elev)
True
Minimum Curvature

Planned Survey

Measured Depth (ft)	Inclination (°)	Azimuth (°)	Vertical Depth (ft)	+N/-S (ft)	+E/-W (ft)	Vertical Section (ft)	Dogleg Rate (°/100ft)	Build Rate (°/100ft)	Comments / Formations
4,500.0	14.88	109.95	4,392.7	-303.6	847.1	-306.8	0.00	0.00	
4,600.0	14.88	109.95	4,489.4	-312.3	871.2	-315.7	0.00	0.00	
4,700.0	14.88	109.95	4,586.0	-321.1	895.3	-324.5	0.00	0.00	
4,800.0	14.88	109.95	4,682.7	-329.9	919.5	-333.4	0.00	0.00	
4,900.0	14.88	109.95	4,779.3	-338.6	943.6	-342.2	0.00	0.00	
5,000.0	14.88	109.95	4,876.0	-347.4	967.8	-351.1	0.00	0.00	
5,100.0	14.88	109.95	4,972.6	-356.1	991.9	-359.9	0.00	0.00	
5,200.0	14.88	109.95	5,069.3	-364.9	1,016.0	-368.8	0.00	0.00	
5,300.0	14.88	109.95	5,165.9	-373.7	1,040.2	-377.7	0.00	0.00	
5,400.0	14.88	109.95	5,262.6	-382.4	1,064.3	-386.5	0.00	0.00	
5,500.0	14.88	109.95	5,359.2	-391.2	1,088.5	-395.4	0.00	0.00	
5,570.1	14.88	109.95	5,427.0	-397.3	1,105.4	-401.6	0.00	0.00	Mancos A
5,600.0	14.88	109.95	5,455.9	-399.9	1,112.6	-404.2	0.00	0.00	
5,700.0	14.88	109.95	5,552.5	-408.7	1,136.7	-413.1	0.00	0.00	
5,800.0	14.88	109.95	5,649.1	-417.5	1,160.9	-421.9	0.00	0.00	
5,900.0	14.88	109.95	5,745.8	-426.2	1,185.0	-430.8	0.00	0.00	
6,000.0	14.88	109.95	5,842.4	-435.0	1,209.2	-439.6	0.00	0.00	
6,100.0	14.88	109.95	5,939.1	-443.8	1,233.3	-448.5	0.00	0.00	
6,200.0	14.88	109.95	6,035.7	-452.5	1,257.4	-457.3	0.00	0.00	
6,300.0	14.88	109.95	6,132.4	-461.3	1,281.6	-466.2	0.00	0.00	
6,400.0	14.88	109.95	6,229.0	-470.0	1,305.7	-475.1	0.00	0.00	
6,500.0	14.88	109.95	6,325.7	-478.8	1,329.9	-483.9	0.00	0.00	
6,600.0	14.88	109.95	6,422.3	-487.6	1,354.0	-492.8	0.00	0.00	
6,700.0	14.88	109.95	6,519.0	-496.3	1,378.1	-501.6	0.00	0.00	
6,800.0	14.88	109.95	6,615.6	-505.1	1,402.3	-510.5	0.00	0.00	
6,900.0	14.88	109.95	6,712.3	-513.9	1,426.4	-519.3	0.00	0.00	
7,000.0	14.88	109.95	6,808.9	-522.6	1,450.6	-528.2	0.00	0.00	
7,100.0	14.88	109.95	6,905.5	-531.4	1,474.7	-537.0	0.00	0.00	
7,200.0	14.88	109.95	7,002.2	-540.1	1,498.8	-545.9	0.00	0.00	
7,300.0	14.88	109.95	7,098.8	-548.9	1,523.0	-554.7	0.00	0.00	
7,400.0	14.88	109.95	7,195.5	-557.7	1,547.1	-563.6	0.00	0.00	
7,416.5	14.88	109.95	7,211.4	-559.1	1,551.1	-565.1	0.00	0.00	Start 9° Build @ 7416.5' MD
7,487.3	14.12	84.50	7,280.0	-561.4	1,568.3	-567.4	9.00	-1.08	Niobrara
7,500.0	14.27	79.86	7,292.4	-561.0	1,571.3	-567.0	9.00	1.23	
7,600.0	18.12	50.17	7,388.5	-548.8	1,595.5	-554.9	9.00	3.84	
7,700.0	24.72	33.20	7,481.7	-521.3	1,618.9	-527.5	9.00	6.61	
7,800.0	32.45	23.45	7,569.5	-479.1	1,641.1	-485.4	9.00	7.73	
7,900.0	40.66	17.22	7,649.7	-423.2	1,661.4	-429.6	9.00	8.21	
8,000.0	49.10	12.80	7,720.6	-355.1	1,679.5	-361.6	9.00	8.45	
8,100.0	57.68	9.39	7,780.1	-276.4	1,694.8	-282.9	9.00	8.58	
8,200.0	66.33	6.58	7,827.0	-189.1	1,707.0	-195.6	9.00	8.65	
8,300.0	75.03	4.12	7,860.1	-95.2	1,715.7	-101.8	9.00	8.70	
8,400.0	83.75	1.85	7,878.5	2.9	1,720.8	-3.8	9.00	8.72	
8,494.5	92.00	359.78	7,882.0	97.2	1,722.1	90.6	9.00	8.73	Landing Pt @ 7882' TVD, 92° - DH01-6 B07 79
8,500.0	92.00	359.78	7,881.8	102.7	1,722.1	96.1	0.00	0.00	
8,514.8	92.00	359.78	7,881.3	117.5	1,722.0	110.9	0.00	0.00	DH01-6 B07 799 LP
8,600.0	92.00	359.78	7,878.3	202.6	1,721.7	196.0	0.00	0.00	
8,700.0	92.00	359.78	7,874.8	302.6	1,721.3	296.0	0.00	0.00	
8,800.0	92.00	359.78	7,871.3	402.5	1,720.9	395.9	0.00	0.00	
8,900.0	92.00	359.78	7,867.8	502.4	1,720.6	495.8	0.00	0.00	
9,000.0	92.00	359.78	7,864.4	602.4	1,720.2	595.8	0.00	0.00	
9,100.0	92.00	359.78	7,860.9	702.3	1,719.8	695.7	0.00	0.00	

Cathedral Energy Services

Planning Report

Database: EDM 5000.1 US Multi Users DB
Company: EnCana Oil & Gas (USA) Inc
Project: Kimball Mtn
Site: Section 7 (B07 799)
Well: DH1A-6 B07 799
Wellbore: Hz
Design: Plan #8

Local Co-ordinate Reference:
TVD Reference:
MD Reference:
North Reference:
Survey Calculation Method:

Well DH1A-6 B07 799
 WELL @ 6670.0ft (Original Well Elev)
 WELL @ 6670.0ft (Original Well Elev)
 True
 Minimum Curvature

Planned Survey

Measured Depth (ft)	Inclination (°)	Azimuth (°)	Vertical Depth (ft)	+N/-S (ft)	+E/-W (ft)	Vertical Section (ft)	Dogleg Rate (°/100ft)	Build Rate (°/100ft)	Comments / Formations
9,200.0	92.00	359.78	7,857.4	802.3	1,719.4	795.6	0.00	0.00	
9,300.0	92.00	359.78	7,853.9	902.2	1,719.0	895.6	0.00	0.00	
9,400.0	92.00	359.78	7,850.4	1,002.1	1,718.6	995.5	0.00	0.00	
9,500.0	92.00	359.78	7,846.9	1,102.1	1,718.3	1,095.5	0.00	0.00	
9,600.0	92.00	359.78	7,843.4	1,202.0	1,717.9	1,195.4	0.00	0.00	
9,700.0	92.00	359.78	7,839.9	1,301.9	1,717.5	1,295.3	0.00	0.00	
9,800.0	92.00	359.78	7,836.4	1,401.9	1,717.1	1,395.3	0.00	0.00	
9,900.0	92.00	359.78	7,832.9	1,501.8	1,716.7	1,495.2	0.00	0.00	
10,000.0	92.00	359.78	7,829.5	1,601.8	1,716.3	1,595.2	0.00	0.00	
10,100.0	92.00	359.78	7,826.0	1,701.7	1,715.9	1,695.1	0.00	0.00	
10,200.0	92.00	359.78	7,822.5	1,801.6	1,715.6	1,795.0	0.00	0.00	
10,300.0	92.00	359.78	7,819.0	1,901.6	1,715.2	1,895.0	0.00	0.00	
10,400.0	92.00	359.78	7,815.5	2,001.5	1,714.8	1,994.9	0.00	0.00	
10,500.0	92.00	359.78	7,812.0	2,101.5	1,714.4	2,094.9	0.00	0.00	
10,600.0	92.00	359.78	7,808.5	2,201.4	1,714.0	2,194.8	0.00	0.00	
10,700.0	92.00	359.78	7,805.0	2,301.3	1,713.6	2,294.7	0.00	0.00	
10,800.0	92.00	359.78	7,801.5	2,401.3	1,713.3	2,394.7	0.00	0.00	
10,900.0	92.00	359.78	7,798.0	2,501.2	1,712.9	2,494.6	0.00	0.00	
11,000.0	92.00	359.78	7,794.6	2,601.1	1,712.5	2,594.5	0.00	0.00	
11,100.0	92.00	359.78	7,791.1	2,701.1	1,712.1	2,694.5	0.00	0.00	
11,200.0	92.00	359.78	7,787.6	2,801.0	1,711.7	2,794.4	0.00	0.00	
11,300.0	92.00	359.78	7,784.1	2,901.0	1,711.3	2,894.4	0.00	0.00	
11,400.0	92.00	359.78	7,780.6	3,000.9	1,711.0	2,994.3	0.00	0.00	
11,500.0	92.00	359.78	7,777.1	3,100.8	1,710.6	3,094.2	0.00	0.00	
11,600.0	92.00	359.78	7,773.6	3,200.8	1,710.2	3,194.2	0.00	0.00	
11,700.0	92.00	359.78	7,770.1	3,300.7	1,709.8	3,294.1	0.00	0.00	
11,800.0	92.00	359.78	7,766.6	3,400.7	1,709.4	3,394.1	0.00	0.00	
11,900.0	92.00	359.78	7,763.2	3,500.6	1,709.0	3,494.0	0.00	0.00	
12,000.0	92.00	359.78	7,759.7	3,600.5	1,708.7	3,593.9	0.00	0.00	
12,100.0	92.00	359.78	7,756.2	3,700.5	1,708.3	3,693.9	0.00	0.00	
12,200.0	92.00	359.78	7,752.7	3,800.4	1,707.9	3,793.8	0.00	0.00	
12,300.0	92.00	359.78	7,749.2	3,900.3	1,707.5	3,893.8	0.00	0.00	
12,400.0	92.00	359.78	7,745.7	4,000.3	1,707.1	3,993.7	0.00	0.00	
12,500.0	92.00	359.78	7,742.2	4,100.2	1,706.7	4,093.6	0.00	0.00	
12,600.0	92.00	359.78	7,738.7	4,200.2	1,706.4	4,193.6	0.00	0.00	
12,700.0	92.00	359.78	7,735.2	4,300.1	1,706.0	4,293.5	0.00	0.00	
12,800.0	92.00	359.78	7,731.7	4,400.0	1,705.6	4,393.5	0.00	0.00	
12,900.0	92.00	359.78	7,728.3	4,500.0	1,705.2	4,493.4	0.00	0.00	
13,000.0	92.00	359.78	7,724.8	4,599.9	1,704.8	4,593.3	0.00	0.00	
13,100.0	92.00	359.78	7,721.3	4,699.8	1,704.4	4,693.3	0.00	0.00	
13,200.0	92.00	359.78	7,717.8	4,799.8	1,704.1	4,793.2	0.00	0.00	
13,300.0	92.00	359.78	7,714.3	4,899.7	1,703.7	4,893.1	0.00	0.00	
13,400.0	92.00	359.78	7,710.8	4,999.7	1,703.3	4,993.1	0.00	0.00	
13,500.0	92.00	359.78	7,707.3	5,099.6	1,702.9	5,093.0	0.00	0.00	
13,600.0	92.00	359.78	7,703.8	5,199.5	1,702.5	5,193.0	0.00	0.00	
13,700.0	92.00	359.78	7,700.3	5,299.5	1,702.1	5,292.9	0.00	0.00	
13,800.0	92.00	359.78	7,696.8	5,399.4	1,701.8	5,392.8	0.00	0.00	
13,900.0	92.00	359.78	7,693.4	5,499.4	1,701.4	5,492.8	0.00	0.00	
14,000.0	92.00	359.78	7,689.9	5,599.3	1,701.0	5,592.7	0.00	0.00	
14,100.0	92.00	359.78	7,686.4	5,699.2	1,700.6	5,692.7	0.00	0.00	
14,200.0	92.00	359.78	7,682.9	5,799.2	1,700.2	5,792.6	0.00	0.00	
14,300.0	92.00	359.78	7,679.4	5,899.1	1,699.8	5,892.5	0.00	0.00	

Cathedral Energy Services

Planning Report

Database: EDM 5000.1 US Multi Users DB
Company: EnCana Oil & Gas (USA) Inc
Project: Kimball Mtn
Site: Section 7 (B07 799)
Well: DH1A-6 B07 799
Wellbore: Hz
Design: Plan #8

Local Co-ordinate Reference:
TVD Reference:
MD Reference:
North Reference:
Survey Calculation Method:

Well DH1A-6 B07 799
WELL @ 6670.0ft (Original Well Elev)
WELL @ 6670.0ft (Original Well Elev)
True
Minimum Curvature

Planned Survey

Measured Depth (ft)	Inclination (°)	Azimuth (°)	Vertical Depth (ft)	+N/-S (ft)	+E/-W (ft)	Vertical Section (ft)	Dogleg Rate (°/100ft)	Build Rate (°/100ft)	Comments / Formations
14,400.0	92.00	359.78	7,675.9	5,999.0	1,699.4	5,992.5	0.00	0.00	
14,500.0	92.00	359.78	7,672.4	6,099.0	1,699.1	6,092.4	0.00	0.00	
14,600.0	92.00	359.78	7,668.9	6,198.9	1,698.7	6,192.4	0.00	0.00	
14,700.0	92.00	359.78	7,665.4	6,298.9	1,698.3	6,292.3	0.00	0.00	
14,800.0	92.00	359.78	7,661.9	6,398.8	1,697.9	6,392.2	0.00	0.00	
14,900.0	92.00	359.78	7,658.5	6,498.7	1,697.5	6,492.2	0.00	0.00	
15,000.0	92.00	359.78	7,655.0	6,598.7	1,697.1	6,592.1	0.00	0.00	
15,100.0	92.00	359.78	7,651.5	6,698.6	1,696.8	6,692.1	0.00	0.00	
15,200.0	92.00	359.78	7,648.0	6,798.6	1,696.4	6,792.0	0.00	0.00	
15,300.0	92.00	359.78	7,644.5	6,898.5	1,696.0	6,891.9	0.00	0.00	
15,400.0	92.00	359.78	7,641.0	6,998.4	1,695.6	6,991.9	0.00	0.00	
15,500.0	92.00	359.78	7,637.5	7,098.4	1,695.2	7,091.8	0.00	0.00	
15,600.0	92.00	359.78	7,634.0	7,198.3	1,694.8	7,191.7	0.00	0.00	
15,700.0	92.00	359.78	7,630.5	7,298.2	1,694.5	7,291.7	0.00	0.00	
15,800.0	92.00	359.78	7,627.0	7,398.2	1,694.1	7,391.6	0.00	0.00	
15,900.0	92.00	359.78	7,623.6	7,498.1	1,693.7	7,491.6	0.00	0.00	
16,000.0	92.00	359.78	7,620.1	7,598.1	1,693.3	7,591.5	0.00	0.00	
16,100.0	92.00	359.78	7,616.6	7,698.0	1,692.9	7,691.4	0.00	0.00	
16,200.0	92.00	359.78	7,613.1	7,797.9	1,692.5	7,791.4	0.00	0.00	
16,300.0	92.00	359.78	7,609.6	7,897.9	1,692.2	7,891.3	0.00	0.00	
16,400.0	92.00	359.78	7,606.1	7,997.8	1,691.8	7,991.3	0.00	0.00	
16,500.0	92.00	359.78	7,602.6	8,097.8	1,691.4	8,091.2	0.00	0.00	
16,600.0	92.00	359.78	7,599.1	8,197.7	1,691.0	8,191.1	0.00	0.00	
16,700.0	92.00	359.78	7,595.6	8,297.6	1,690.6	8,291.1	0.00	0.00	
16,800.0	92.00	359.78	7,592.1	8,397.6	1,690.2	8,391.0	0.00	0.00	
16,900.0	92.00	359.78	7,588.7	8,497.5	1,689.9	8,491.0	0.00	0.00	
17,000.0	92.00	359.78	7,585.2	8,597.4	1,689.5	8,590.9	0.00	0.00	
17,100.0	92.00	359.78	7,581.7	8,697.4	1,689.1	8,690.8	0.00	0.00	
17,200.0	92.00	359.78	7,578.2	8,797.3	1,688.7	8,790.8	0.00	0.00	
17,300.0	92.00	359.78	7,574.7	8,897.3	1,688.3	8,890.7	0.00	0.00	
17,400.0	92.00	359.78	7,571.2	8,997.2	1,687.9	8,990.7	0.00	0.00	
17,500.0	92.00	359.78	7,567.7	9,097.1	1,687.6	9,090.6	0.00	0.00	
17,600.0	92.00	359.78	7,564.2	9,197.1	1,687.2	9,190.5	0.00	0.00	
17,700.0	92.00	359.78	7,560.7	9,297.0	1,686.8	9,290.5	0.00	0.00	
17,800.0	92.00	359.78	7,557.2	9,397.0	1,686.4	9,390.4	0.00	0.00	
17,900.0	92.00	359.78	7,553.8	9,496.9	1,686.0	9,490.3	0.00	0.00	
18,000.0	92.00	359.78	7,550.3	9,596.8	1,685.6	9,590.3	0.00	0.00	
18,100.0	92.00	359.78	7,546.8	9,696.8	1,685.2	9,690.2	0.00	0.00	
18,200.0	92.00	359.78	7,543.3	9,796.7	1,684.9	9,790.2	0.00	0.00	
18,300.0	92.00	359.78	7,539.8	9,896.6	1,684.5	9,890.1	0.00	0.00	
18,400.0	92.00	359.78	7,536.3	9,996.6	1,684.1	9,990.0	0.00	0.00	
18,500.0	92.00	359.78	7,532.8	10,096.5	1,683.7	10,090.0	0.00	0.00	
18,600.0	92.00	359.78	7,529.3	10,196.5	1,683.3	10,189.9	0.00	0.00	
18,676.2	92.00	359.78	7,526.7	10,272.6	1,683.0	10,266.1	0.00	0.00	DH01-6 B07 799 TD2
18,684.1	92.00	359.78	7,526.4	10,280.5	1,683.0	10,274.0	0.00	0.00	DH01-6 B07 799 TD
18,695.2	92.00	359.78	7,526.0	10,291.6	1,683.0	10,285.1	0.00	0.00	TD @ 18695.2' MD

Cathedral Energy Services

Planning Report

Database: EDM 5000.1 US Multi Users DB
Company: EnCana Oil & Gas (USA) Inc
Project: Kimball Mtn
Site: Section 7 (B07 799)
Well: DH1A-6 B07 799
Wellbore: Hz
Design: Plan #8

Local Co-ordinate Reference: Well DH1A-6 B07 799
TVD Reference: WELL @ 6670.0ft (Original Well Elev)
MD Reference: WELL @ 6670.0ft (Original Well Elev)
North Reference: True
Survey Calculation Method: Minimum Curvature

Targets

Target Name - hit/miss target - Shape	Dip Angle (°)	Dip Dir. (°)	TVD (ft)	+N/-S (ft)	+E/-W (ft)	Northing (ft)	Easting (ft)	Latitude	Longitude
DH01-6 B07 799 TD - plan misses target center by 226.5ft at 18684.1ft MD (7526.4 TVD, 10280.5 N, 1683.0 E) - Point	0.00	0.00	7,300.0	10,272.6	1,682.2	1,619,305.61	2,160,266.34	39° 29' 45.59 N	108° 28' 34.36 W
DH01-6 B07 799 TD2 - plan misses target center by 1.0ft at 18676.2ft MD (7526.7 TVD, 10272.6 N, 1683.0 E) - Point	0.00	0.00	7,526.0	10,272.6	1,682.2	1,619,305.61	2,160,266.34	39° 29' 45.59 N	108° 28' 34.36 W
DH01-6 B07 799 LP - plan misses target center by 581.6ft at 8514.8ft MD (7881.3 TVD, 117.5 N, 1722.0 E) - Point	0.00	0.00	7,300.0	97.2	1,722.1	1,609,134.37	2,159,972.23	39° 28' 5.02 N	108° 28' 33.86 W
DH01-6 B07 799 LP2 - plan hits target center - Point	0.00	0.00	7,882.0	97.2	1,722.1	1,609,134.37	2,159,972.23	39° 28' 5.02 N	108° 28' 33.86 W

Formations

Measured Depth (ft)	Vertical Depth (ft)	Name	Lithology	Dip (°)	Dip Direction (°)
1,695.1	1,660.0	Williams Fork		0.00	
3,256.6	3,191.0	Top of Gas		0.00	
4,084.3	3,991.0	Rollins		0.00	
5,570.1	5,427.0	Mancos A		0.00	
7,487.3	7,280.0	Niobrara		0.00	

Plan Annotations

Measured Depth (ft)	Vertical Depth (ft)	Local Coordinates		Comment
		+N/-S (ft)	+E/-W (ft)	
200.0	200.0	0.0	0.0	KOP @ 200' MD
666.7	662.0	-18.8	53.5	EOB; Inc=14°
1,666.7	1,632.3	-99.0	281.8	Start Drop -3.00
2,133.3	2,094.4	-117.8	335.3	Start 3° Build @ 2133.3' MD
2,629.4	2,584.8	-139.7	395.5	EOB; Inc=14.88°
7,416.5	7,211.4	-559.1	1,551.1	Start 9° Build @ 7416.5' MD
8,494.5	7,882.0	97.2	1,722.1	Landing Pt @ 7882' TVD, 92°
18,695.2	7,526.0	10,291.6	1,683.0	TD @ 18695.2' MD