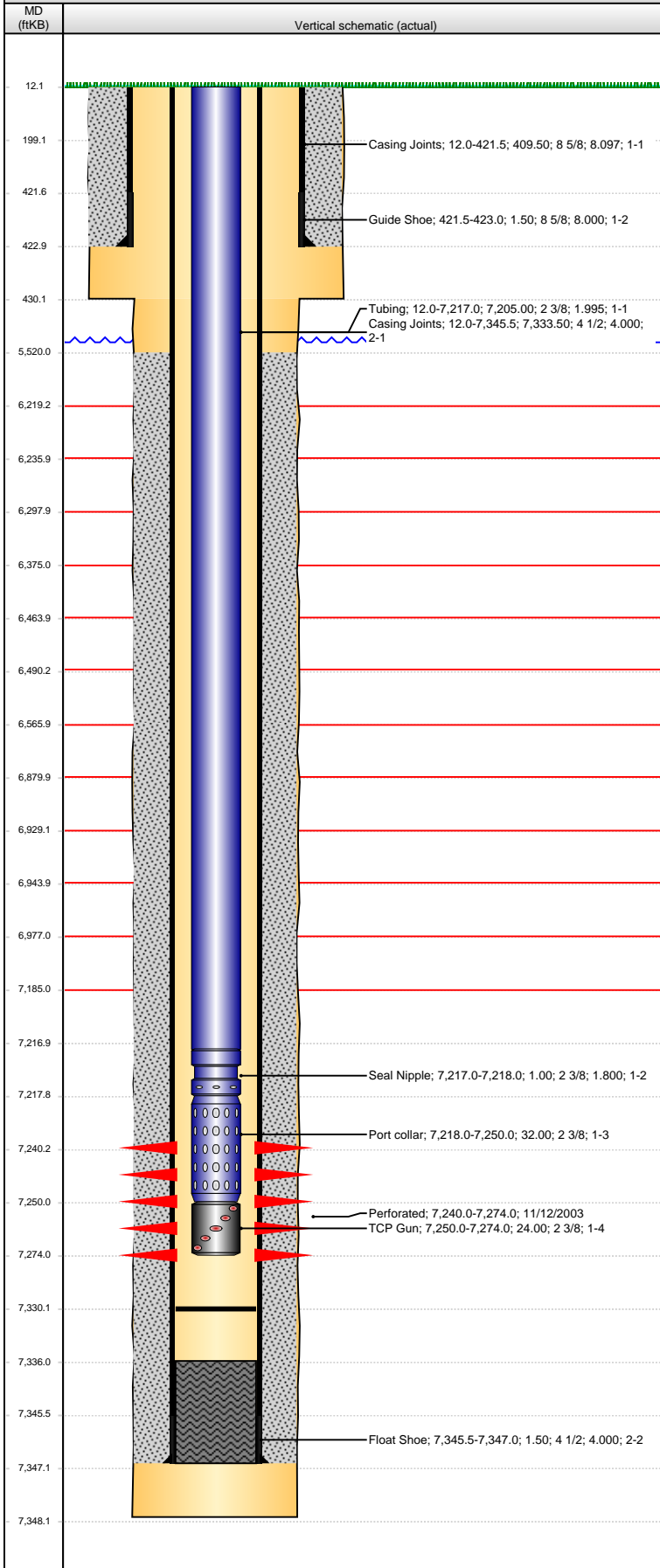


Well Name: CORLISS 21-33

VERTICAL - ORIGINAL HOLE, 8/9/2013 8:41:44 AM



Well Header

API	Business Unit	District	Well Config
05-123-21003	WATTENBERG	15	VERTICAL
Original KB Elevation (ft)	KB - GL / MSL (ftKB)	Spud Date	P & A Date
4,576.00	12.00	10/27/2003	

Comment
3-3/8" TUBING CONVEYED PERFORATING GUN AND ASSEMBLY LEFT IN HOLE.

Directions To Well

Congressional Location

Quarter 1	Quarter 2	Quarter 3	Quarter 4	Section	Township	Twnshp N...	Range	Rng E/W Dir
		NE	NW	33	5	N	63	W

Bottom Hole Location

North-South Distance (ft)	From N or S Line	East-West Distance (ft)	From E or W Line

Plug Back Total Depths

Date	Depth (ftKB)	Method	Com
11/5/2003	7,336.0	CASING TALLY	ORIGINAL PBTD. FLOAT COLLAR
11/12/2003	7,293.0	CASED HOLE LOG	DEPTH LOGGER
11/23/2003	7,330.0	TAG	TBG TAG @ 7326; CIRCULATE CLEAN TO 7330'

Wellbore Sections

Section Des	Size (in)	Act Top (ftKB)	Act Btm (ftKB)
SURFACE	12 1/4	12.0	430.0
PRODUCTION	7 7/8	430.0	7,348.0

Zone Statuses

Zone Name	Status Date	Status	Job
DAKOTA	11/26/2003	PR	DRILLING/COMPLETION - ORIGINAL, 10/27/2003 00:00

Casing Strings

Surface, 423.0ftKB

Casing Description	Run Date	OD (in)	Wt/Len (l...)	Grade	Top (ftKB)	MD (ftKB)
Surface	10/28/2003	8 5/8	24.00	J-55	12.0	423.0

Production, 7,347.0ftKB

Casing Description	Run Date	OD (in)	Wt/Len (l...)	Grade	Top (ftKB)	MD (ftKB)
Production	11/5/2003	4 1/2	11.60	N-80	12.0	7,347.0

Cement

Description	Top Depth (ftKB)	Bottom Depth (ftKB)
Surface Casing Cement	12.0	423.0
Description	Top Depth (ftKB)	Bottom Depth (ftKB)
PRODUCTION CASING CEMENT	5,520.0	7,347.0

Tubing Components

Item Des	OD (in)	Wt (lb/ft)	Grade	Jts	Len (ft)	Btm (ftKB)	Btm (TVD) (ftKB)
Tubing	2 3/8	4.70	J-55	219	7,205.00	7,217.0	
Seal Nipple	2 3/8			1	1.00	7,218.0	
Port collar	2 3/8			1	32.00	7,250.0	
TCP Gun	2 3/8			1	24.00	7,274.0	

Perforation Data

Zone	Bnch/St g	Entered Shot Total	Top (ftKB)	Btm (ftKB)	Date
DAKOTA, ORIGINAL HOLE		136	7,240.00	7,274.00	11/12/2003

Other In Hole

Run Date	Des	OD (in)	Top (ftKB)	Btm (ftKB)

Logs

Date	Type	Top (ftKB)	Btm (ftKB)
11/4/2003	COMPENSATED DENSITY	411.0	7,348.0
11/12/2003	CBL/CCL/GR	5,400.0	7,288.0
11/21/2003	CBL/CCL/GR	5,435.0	7,288.0