



Realtime Log

Natural Formation Evaluation
Gamma Ray

Scale:

Company: Anadarko

1:240

Well: Russian Fiddler 37N-18HZ

True Vertical Depth

Field: Weld County (Kerr McGee)

County: Continental US State: United States

Status:

Final Print

Surface Location:

Latitude: 40° 7' 3.324" N

Longitude: 104° 42' 21.942" W

Other Services:

API Number: 05-123-36227

SEC: 19 TWP: 2N RNC: 65W

Directional
VSS

Permanent Datum (P.D.): Ground Level

Elevation: 4988.00 ft.

Elevations: N/A

Log Measured From: Rig Floor

17.00 ft.

Above P.D.

KB:

DF:

GL:

5005.00 ft.
4988.00 ft.

Depth Reference: Driller's Depth

GL:

4988.00 ft.

Interval Logged

Dates

Magnetic Field Reference

Top: 6585.0 ft. Date From: 14/Apr/13 Date To: 16/Apr/14 Dip Angle: 66.84° Az Reference North: True

Bottom: 7799.0 ft. Date To: 16/Apr/14 Total Mag to Reference

Spud Date: 14/Apr/13 Field Strength: 52932.0 nT North Correction: 8.41°

Borehole Record

Casing Record

Hole Size From To Size Weight From To

13.500 in. Surface 1033.0 ft. 9.625 in. 36.00 lb/ft Surface 1029.0 ft.

8.750 in. 1033.0 ft. 7799.0 ft.

Mud Record

Deviation Record

Type From To Hole Size Interval Inc / Az (Start) Inc / Az (End)

Water Based Surface 7799.0 ft. 13.500 in. 1033.0 ft. 0.0° / 0.0° 0.2° / 195.2°

8.750 in. 6771.0 ft. 0.2° / 192.0° 90.6° / 354.1°

Acquisition System Software Version

Other

Advantage 2.20U4 Rig: Xtreme 6 / Xtreme Coil Drilling

PAIS 6.4.1.34 Job No: 5325374

District / Unit: RMD / D & E

INTEQ does not guarantee the accuracy or correctness of interpretations provided in or from this log. Since all interpretations are opinions based on measurements, INTEQ shall under no circumstances be responsible for consequential damages or any other loss, costs, damages or expenses incurred or sustained in connection with the use of any such interpretations. INTEQ disclaims all expressed and implied warranties related to this service. INTEQ's liabilities and obligations shall be governed by INTEQ's Standard Terms and Conditions.

Log Run Summary

LWD Run No.	BHA Run No.	Bit Run No.	Bit Size (in.)	Bit Type	Bit Gauge Length (in.)	Assembly Type	Logged Interval		Bit Depth Interval		Date / Time		Circ. Time (hrs.)
							Top (ft.)	Bottom (ft.)	From (ft.)	To (ft.)	Start	End	
1	1	2	8.750	PDC	0.500	Steerable	6585.0	7799.0	1033.0	7799.0	14/Apr/2013 14:15	16/Apr/2013 14:15	41.2

Crew

Name	Arrive	Depart	Name	Arrive	Depart	Name	Arrive	Depart
	Wellsite	Wellsite		Wellsite	Wellsite		Wellsite	Wellsite
Matthew Delmore	13/Apr/2013	21/Apr/2013	Gregory Wheeler Jr.	13/Apr/2013	14/Apr/2013	Donald Delay	14/Apr/2013	21/Apr/2013

Mud Properties Record

Date / Time	LWD	Measured	Mud	Density	Viscosity	pH	Fluid	Oil /	Source	Total	K+
-------------	-----	----------	-----	---------	-----------	----	-------	-------	--------	-------	----

		Run No.	Depth (ft.)	Type	(ppg)	(cp)		Loss (cc)	Water		Chlorides (ppm)	(%)
15/Apr/2013	09:00	1	3745.0	Water Based Mud	8.5	28	8.5	N/A	0.0/98.7	Suction Line	1100	N/A
15/Apr/2013	15:00	1	5959.0	Water Based Mud	9.2	32	8.0	18.0	0.0/94.5	Suction Line	1200	N/A
15/Apr/2013	22:00	1	6773.0	Water Based Mud	9.8	38	8.0	8.0	0.0/92.0	Suction Line	1300	N/A
16/Apr/2013	20:00	1	7799.0	Water Based Mud	10.2	42	8.5	5.2	0.5/89.5	Active Pit	2600	N/A

Mnemonics

Curve	Description	Units
GRAX	Gamma Ray Apparent, 0.5 ft. Avg.	API
ROPA	Rate of Penetration, 3.0 ft Avg.	ft/hr
TCDX	Down Hole Temperature	degF
WOBA	Weight on bit, 1.0 ft. Avg.	klbs

Equipment and Service Data


LWD	Tool	Serial	Measurement	Bit	Max	Min
Run		Number		Offset	O.D.	I.D.
No.				(ft)	(in.)	(in.)
1	DIR	12373461	Directional	47.35	6.750	3.250
1	SRIG	12376056	Gamma	43.98	6.750	3.250

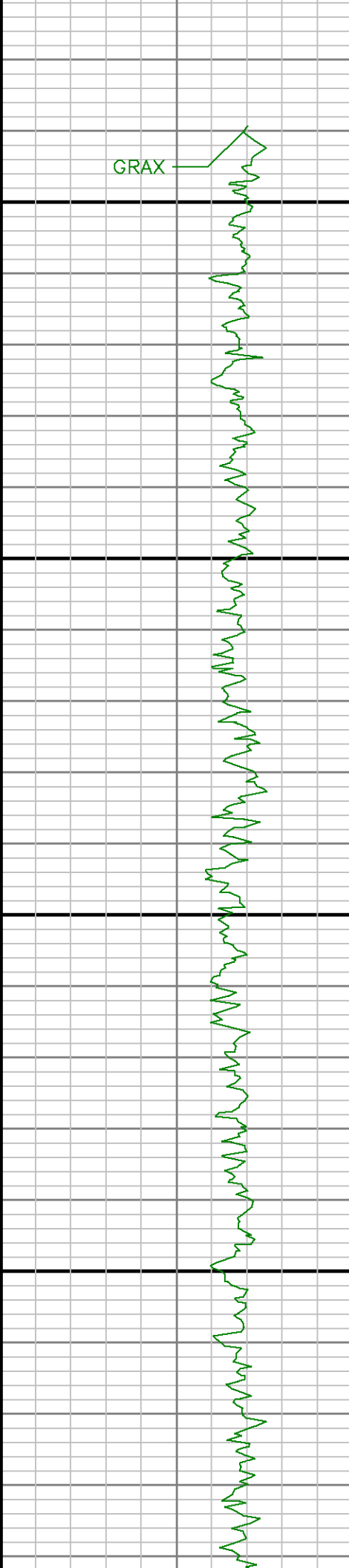
Service and Tool Mnemonics

Mnemonic	Name	Description
DIR	Directional	Wellbore directional survey
SRIG	Inclination and Gamma	Probe based gamma ray and inclination module

Comments

<p>1) Baker Hughes INTEQ run 1 utilized 6 3/4 inch NaviTrak and NaviGamma Services. NaviTrak services (VSS, Directional) were provided behind an 8 3/4 inch bit and steerable assembly from 1033 to 6635 ft MD (1032.96 to 6538.68 ft TVD). NaviGamma services (VSS, Directional, Gamma Ray) were provided behind an 8 3/4 inch bit and steerable assembly from 6585 to 7799 ft MD (6588.72 to 7230.51 ft TVD).</p> <p>2. Depth measurements were obtained from a depth tracking system not supplied or operated by Baker Hughes. Due to the lack of control by Baker Hughes LWD logging engineers, depth calibrations and measurements could not be independently verified and the unverified depths as supplied to Baker Hughes are being used to present logging data.</p>

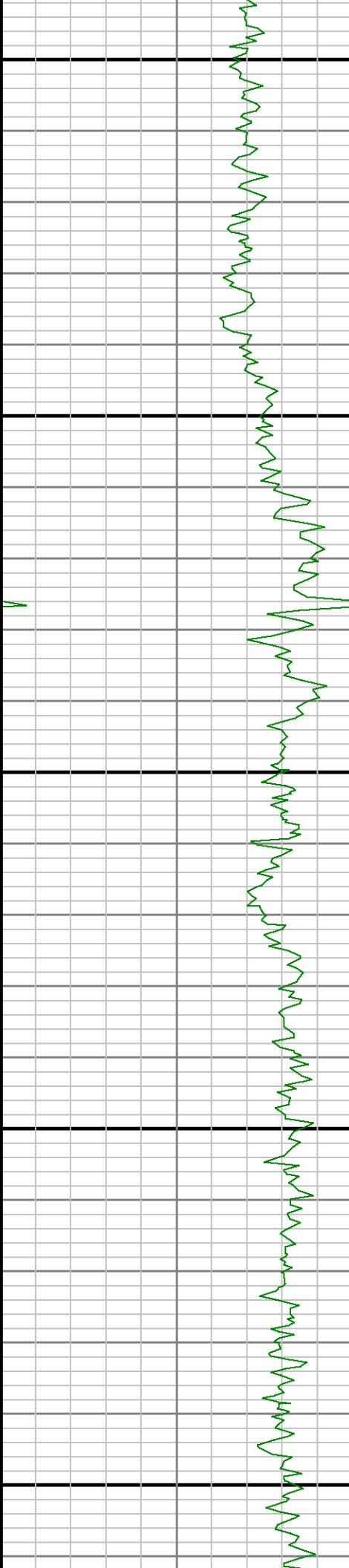
<div><div></div><div><div>Company : Anadarko</div><div>Well : Russian Fiddler 37N-18HZ</div><div>Interval : 6465.00 - 7265.00 feet</div><div>Created : 16/Apr/2013 8:45:25 PM</div></div></div>												
<div>Gamma Ray Apparent 0.5 ft Avg GRAX</div> <div>0150</div> <div>API</div>				<div>TVD feet 1:240</div>	<div>Rate of Penetration 3.0 ft Avg ROP_AVG</div> <div>5000</div> <div>ft/hr</div>				<div>Surface Weight On Bit 1.0 ft Avg WOB_AVG</div> <div>0100</div> <div>klbf</div> <div>Downhole Temperature TCDX</div> <div>100200</div> <div>degF</div>			



6500

0099

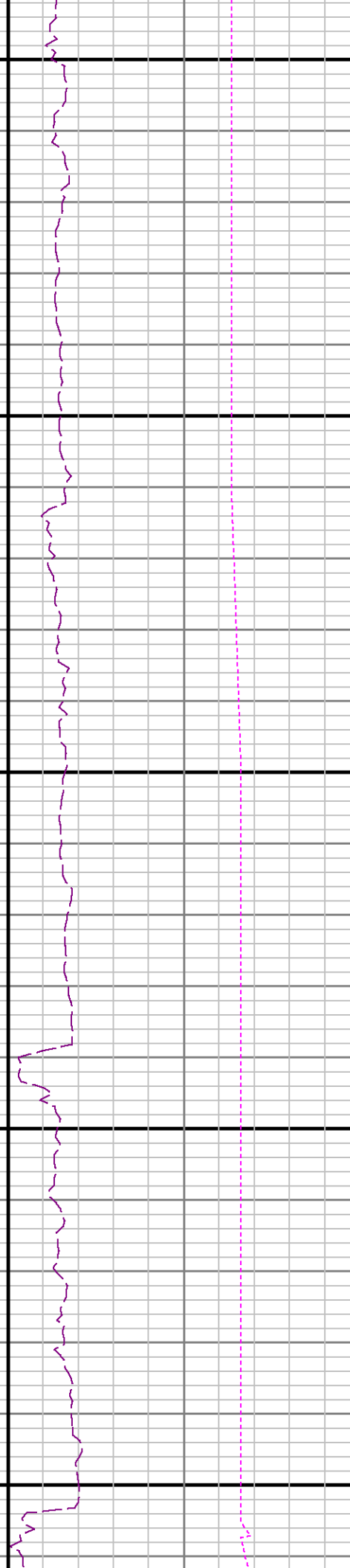


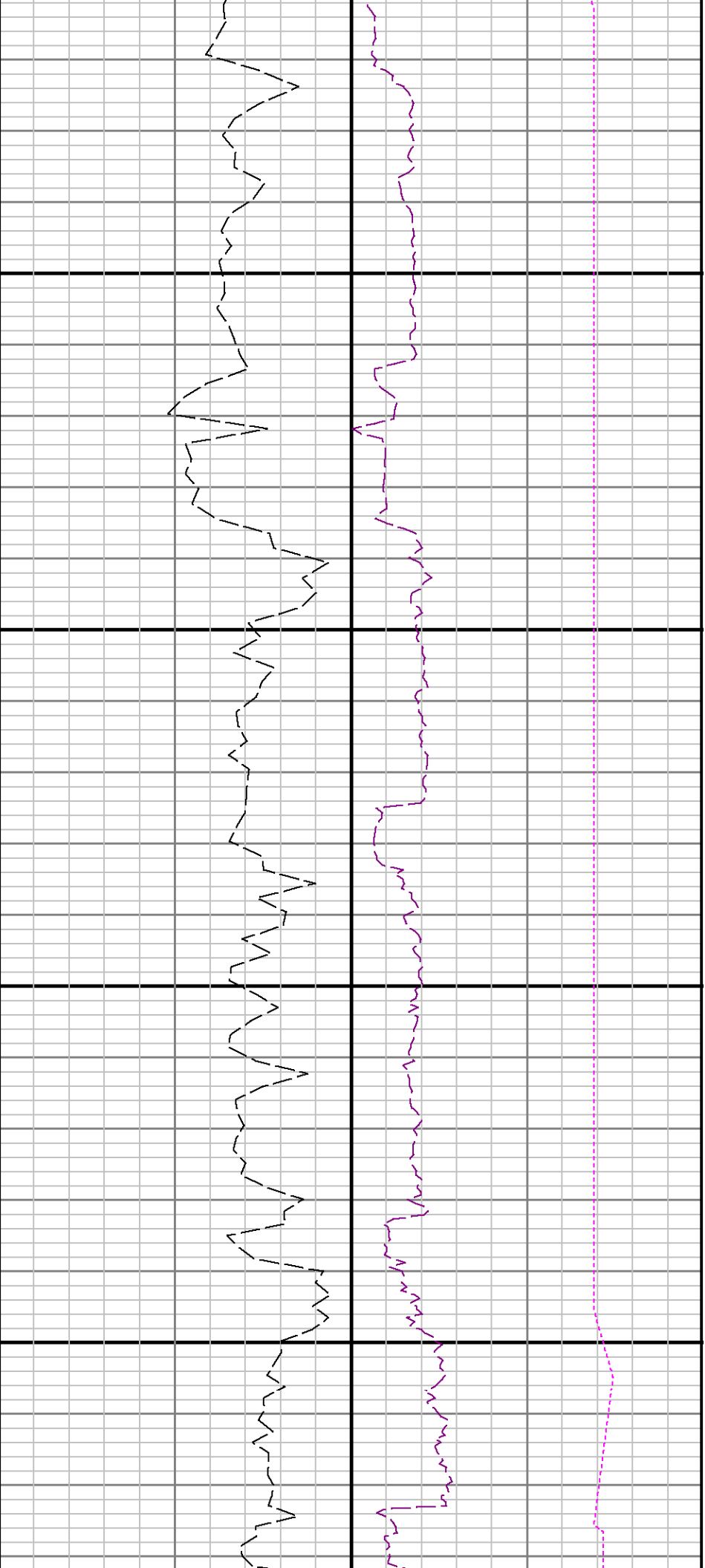


0069

0089

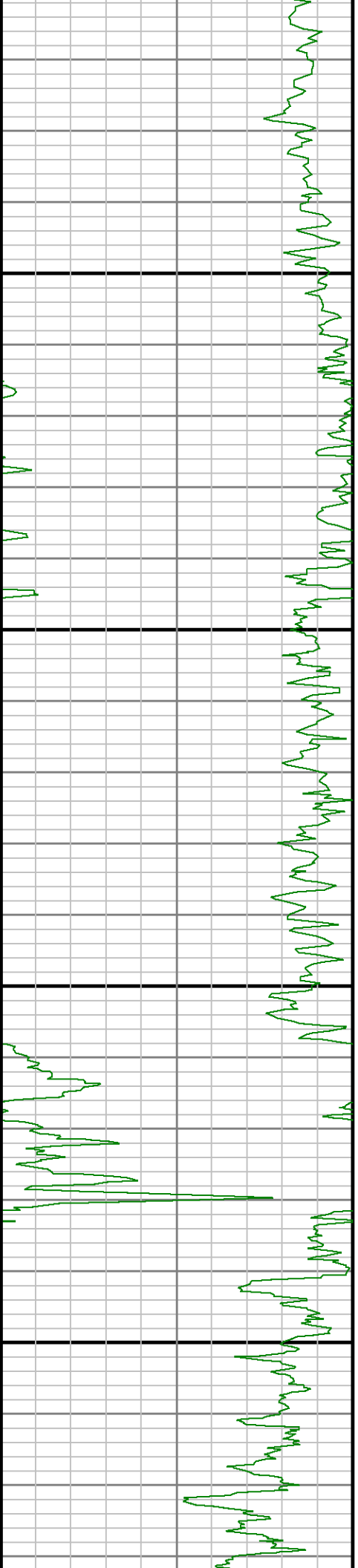
0079

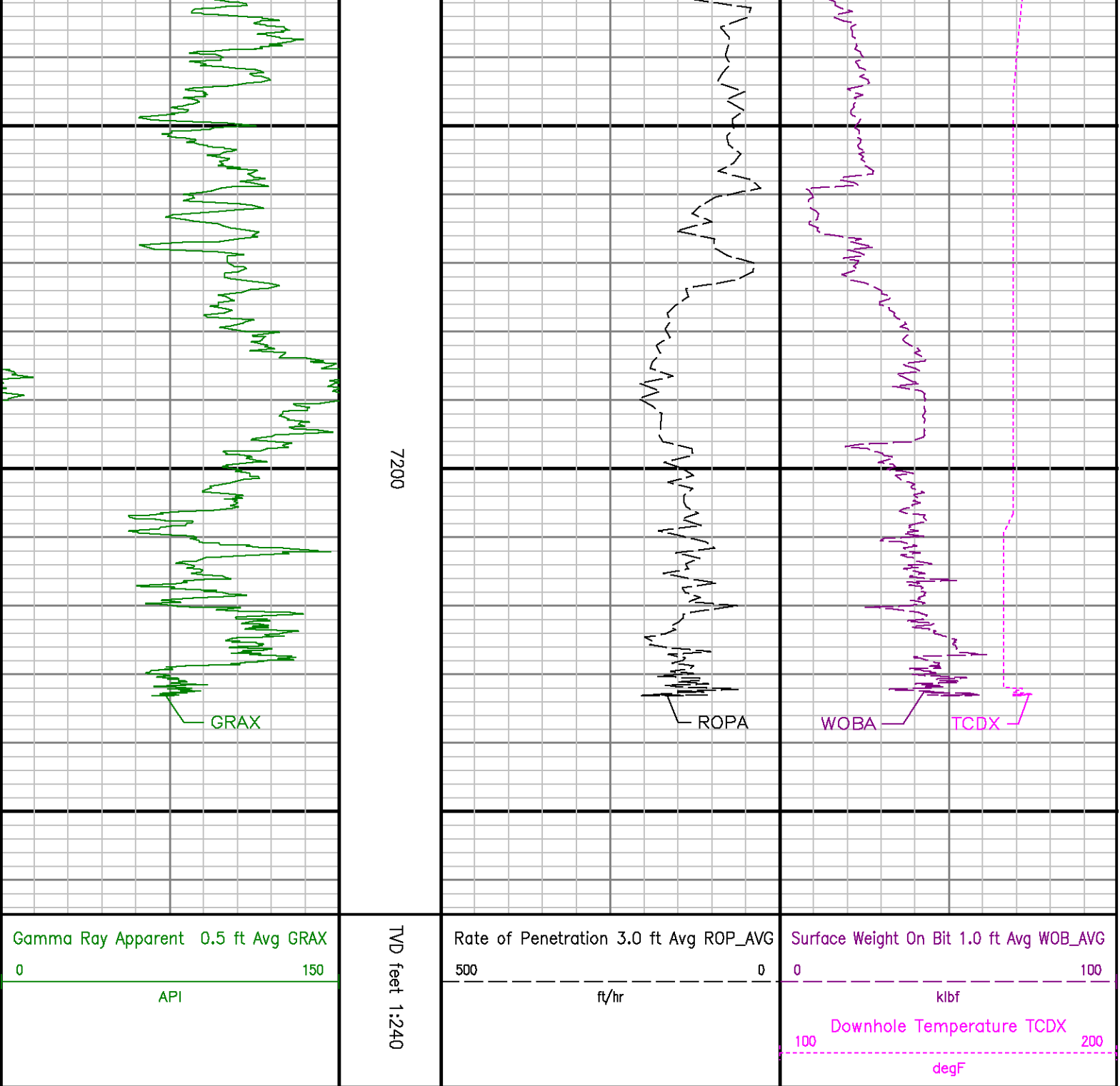




7000

7100





ADVANTAGE Final Survey Listing

Operator	: Anadarko	Field	: Weld County (Kerr McGee)	API No	: 05-123-35227
Well	: Russian Fiddler 37N-18HZ	Rig	: Xtreme 6	Job	: 5325374
Wellbore	: Russian Fiddler 37N-18HZ Orig Hole				

Well Origin

Latitude	40.1175 deg	Longitude	-104.7051 deg
North Reference	True	Drill Depth Zero	Rig Floor
Vertical Datum is	Ground Level	Vertical Datum to DDZ	17.00 ft
Vertical Section North	0.00 ft	Vertical Section East	0.00 ft
Vertical Section Azimuth	359.5400 deg	Vertical Section Depth	0.00ft
Grid Convergence	0.0000 deg	Magnetic Declination	8.4300 deg
Total Correction	8.4300 deg	TVD Calculation Method	Minimal Curvature
D-Raw Calculation	Magecorri	Local Magnetic Field	52926 nT
Local Magnetic Dip Angle	65.8800 deg	Local Gravity Field	9.795 m/s^2

Tie	MD ft	Incl deg	Azim deg	North ft	East ft	TVD ft	VS ft	Incr VS ft	Crs Len ft	DLS deg/100ft	Build deg/100ft	Turn deg/100ft
U	916.00	0.0000	0.0000	0.00	0.00	915.95	0.95	-1.23	916.00	0.03	0.03	13.40

1082.00	0.2000	214.4800	0.80	7.12	1081.98	0.54	-0.79	148.00	0.24	-0.06	82.81	
1154.00	0.0900	241.7800	0.43	8.96	1153.96	0.37	-0.57	92.00	0.14	-0.12	29.65	
1248.00	0.7200	148.5700	-0.09	7.22	1245.96	-0.14	0.01	92.00	0.80	0.69	-103.47	
1337.00	2.2800	118.7200	-1.43	9.12	1336.92	-1.51	2.34	91.00	1.84	1.71	-30.60	
1428.00	3.1900	120.5500	-3.59	12.89	1427.82	-3.69	6.68	91.00	1.00	1.00	2.01	
1520.00	3.5800	129.7100	-6.73	17.30	1519.66	-6.87	12.10	92.00	0.72	0.42	9.99	
1612.00	4.9100	118.4800	-10.44	22.97	1611.41	-10.62	18.87	92.00	1.70	1.45	-12.21	
1704.00	6.4500	117.3700	-14.69	31.02	1702.95	-14.84	27.93	92.00	1.68	1.57	-1.21	
1797.00	8.4300	111.8400	-19.61	42.00	1795.17	-19.95	40.01	93.00	2.27	2.13	-6.18	
1889.00	9.5700	102.9500	-23.81	55.72	1888.04	-24.26	54.38	92.00	1.93	1.24	-9.45	
1974.00	11.8000	95.0300	-28.14	71.12	1969.59	-28.71	69.93	95.00	2.93	2.39	-9.32	
2059.00	13.1300	103.5900	-29.18	89.02	2052.62	-29.87	88.09	95.00	2.80	1.80	10.07	
2144.00	13.3500	100.1700	-33.18	108.07	2135.36	-34.03	107.65	95.00	0.96	0.86	-4.02	
2222.00	13.3500	99.1900	-36.48	127.41	2215.07	-37.48	127.17	95.00	0.27	-0.00	-1.15	
2314.00	13.1300	98.2700	-39.42	146.65	2300.81	-40.59	146.64	95.00	0.39	-0.26	-1.08	
2400.00	12.9800	97.5600	-42.09	165.89	2384.58	-43.42	166.08	96.00	0.26	-0.17	-0.83	
2485.00	12.5800	102.8500	-45.41	184.36	2467.48	-46.59	184.85	95.00	1.46	-0.47	6.24	
2570.00	12.2600	107.6500	-50.21	202.01	2550.49	-51.83	203.11	95.00	1.27	-0.36	5.64	
2655.00	12.7600	109.8800	-56.10	219.45	2633.48	-57.88	221.52	95.00	0.78	0.59	2.39	
2740.00	12.1400	105.5300	-61.66	238.90	2716.48	-63.55	239.84	95.00	1.28	-0.73	-4.68	
2825.00	12.4100	110.3200	-67.22	254.07	2799.54	-69.26	267.89	95.00	1.24	0.32	5.64	
2910.00	12.1000	107.8100	-73.12	271.12	2882.60	-75.29	275.93	95.00	0.73	-0.36	-2.95	
2995.00	13.5000	102.0800	-79.09	288.98	2965.49	-81.40	294.78	95.00	1.68	1.65	1.47	
3080.00	13.5000	107.8500	-85.37	307.80	3048.14	-87.84	314.60	95.00	0.33	0.00	-1.42	
3165.00	13.5100	105.5100	-91.08	326.81	3130.79	-93.68	334.45	95.00	0.64	0.01	-2.75	
3250.00	13.0700	107.5800	-96.82	345.54	3213.51	-99.39	353.98	95.00	0.76	-0.52	2.44	
3335.00	12.7500	105.5100	-102.03	363.74	3296.36	-104.95	372.97	95.00	0.66	-0.36	-2.44	
3421.00	12.8400	107.8900	-107.47	381.99	3380.23	-110.54	392.01	96.00	0.57	0.10	2.53	
3508.00	12.8600	104.9200	-112.74	399.99	3463.13	-115.95	410.77	95.00	0.75	-0.21	-3.26	
3591.00	11.6400	109.6300	-118.02	417.07	3546.23	-121.37	428.64	95.00	1.67	-1.20	5.54	
3678.00	12.3000	108.5900	-123.47	433.75	3629.40	-126.94	446.19	95.00	0.99	0.68	-3.58	
3761.00	11.6400	102.8900	-127.91	450.73	3712.57	-131.53	463.74	95.00	1.15	-0.66	-4.59	
3846.00	12.1400	105.6900	-132.21	467.70	3795.74	-136.97	481.25	95.00	0.94	0.59	3.53	
3931.00	12.0600	104.8200	-136.90	484.86	3878.86	-140.79	499.08	95.00	0.23	-0.09	-1.02	
4018.00	11.9500	104.2300	-141.34	502.00	3962.00	-145.36	516.74	95.00	0.19	-0.13	-0.69	
4100.00	12.3800	104.7500	-145.77	519.14	4044.11	-149.93	534.45	94.00	0.53	0.51	0.82	
4185.00	13.0100	107.7200	-151.00	537.06	4127.03	-155.31	553.12	95.00	1.07	0.74	3.49	
4271.00	12.5900	105.1400	-156.39	555.33	4210.90	-160.85	572.17	96.00	0.82	-0.49	-3.00	
4356.00	13.8600	107.1300	-161.81	574.00	4293.84	-166.42	591.61	95.00	1.59	1.49	2.34	
4441.00	13.8200	104.0000	-167.27	593.56	4376.17	-172.03	611.94	95.00	0.88	-0.06	-3.88	
4526.00	13.9800	107.8900	-172.83	613.21	4458.89	-177.80	632.34	95.00	1.12	0.19	4.58	
4611.00	13.5100	110.3900	-178.49	632.28	4541.25	-184.56	652.64	95.00	0.89	-0.55	2.94	
4696.00	13.2600	109.4300	-186.19	650.75	4623.94	-191.41	672.21	95.00	0.39	-0.29	-1.13	
4781.00	12.7200	108.8200	-192.42	668.84	4706.77	-197.79	691.32	95.00	0.67	-0.64	-0.95	
4867.00	12.9700	108.9000	-198.57	686.95	4790.82	-204.08	710.44	96.00	0.30	0.29	0.33	
4950.00	12.8500	107.8100	-204.38	704.66	4871.52	-210.03	728.98	93.00	0.38	-0.14	-1.55	
5035.00	12.3100	108.4700	-209.81	722.25	4954.58	-215.60	747.49	95.00	0.70	-0.64	-1.34	
5118.00	12.2000	108.6900	-215.13	739.05	5035.59	-221.06	765.11	93.00	0.58	-0.13	2.97	
Tie	MD ft	Incl deg	Azim deg	North ft	East ft	TVD ft	VS ft	Incr VS ft	Crs Len ft	DLS deg/100ft	Build deg/100ft	Turn deg/100ft
5203.00	11.2000	107.2600	-220.43	755.44	5116.82	-226.52	782.34	792.34	95.00	1.22	-1.18	-1.68
5288.00	12.3600	108.7800	-226.41	771.64	5200.07	-231.60	799.29	799.29	93.00	1.40	1.40	-0.58
5371.00	11.7200	107.8300	-230.65	788.58	5283.20	-236.98	817.02	817.02	95.00	0.78	-0.75	1.00
5456.00	11.2700	108.1800	-235.88	804.70	5366.50	-242.31	833.95	833.95	95.00	0.54	-0.53	0.85
5542.00	10.2300	108.5800	-240.68	820.00	5450.99	-247.24	849.99	849.99	96.00	1.26	-1.21	-1.68
5627.00	9.4800	104.8800	-244.61	834.00	5534.73	-251.30	864.54	864.54	95.00	0.95	-0.88	-2.00
5712.00	8.8500	102.2100	-247.79	847.16	5618.85	-254.59	878.08	878.08	95.00	0.89	-0.74	-3.14
5798.00	7.4100	108.2800	-250.68	863.67	5701.30	-257.57	889.95	889.95	94.00	1.65	-1.71	4.85
5881.00	6.0600	108.4500	-253.49	885.24	5786.21	-260.45	899.92	899.92	95.00	1.59	-1.59	0.20
5966.00	5.4800	101.8500	-255.58	876.52	5870.78	-262.61	908.45	908.45	95.00	0.89	-0.68	-5.65
6050.00	4.8100	101.2900	-257.08	883.90	5954.44	-264.16	915.99	915.99	94.00	0.80	-0.80	-0.43
6135.00	3.8800	115.2700	-259.00	898.99	6038.20	-266.14	922.38	922.38	95.00	1.65	-1.09	16.45
6220.00	3.3400	119.3800	-261.44	894.75	6124.03	-268.62	927.73	927.73	95.00	0.70	-0.64	4.84
6305.00	3.0200	115.8600	-263.94	898.92	6205.90	-270.84	932.44	932.44	95.00	0.44	-0.36	-4.14
6390.00	2.4900	121.4400	-265.58	902.51	6293.80	-272.81	936.52	936.52	95.00	0.70	-0.62	6.55
6475.00	2.2600	113.2100	-267.20	905.62	6378.73	-274.48	940.03	940.03	95.00	0.49	-0.28	-9.68
6560.00	1.1600	137.2500	-268.49	907.74	6463.89	-275.76	942.51	942.51	95.00	1.51	-1.28	28.28
6602.00	1.1400	119.3500	-269.00	908.39	6505.68	-276.29	943.34	943.34	42.00	0.85	-0.05	-42.62
6645.00	1.1900	25.5000	-268.81	908.96	6548.68	-276.10	943.94	943.94	43.00	3.96	0.12	-218.28
6687.00	4.5900	351.8900	-266.75	908.91	6590.82	-274.04	945.99	945.99	42.00	8.71	8.10	-80.02
6730.00	8.3100	351.2700	-281.97	908.20	6633.34	-289.28	950.82	950.82	43.00	8.66	8.66	-1.44
6772.00	12.2600	350.8200	-254.58	907.01	6674.66	-281.85	956.32	956.32	42.00	9.38	9.38	-1.55
6815.00	15.1600	349.8900	-244.54	905.26	6715.43	-281.80	968.50	968.50	43.00	8.79	8.77	-2.18
6857.00	19.4500	351.5400	-232.22	903.25	6756.52	-239.46	980.99	980.99	42.00	10.30	10.21	4.40
6900.00	24.2100	354.4800	-216.35	901.34	6798.42	-223.55	996.97	996.97	43.00	11.35	11.07	6.64
6942.00	29.3400	355.4700	-197.51	899.70	6833.91	-204.72	1015.89	1015.89	42.00	12.26	12.21	2.38
6985.00	34.6300	358.3900	-174.79	898.10	6870.37	-182.00	1038.68	1038.68	43.00	12.35	12.30	2.14
7028.00	39.3400	355.0600	-149.01	896.15	6904.71	-155.20	1064.52	1064.52	43.00	11.11	10.95	-3.09
7070.00	41.9500	354.4000	-121.77	893.84	6938.57	-128.94	1091.87	1091.87	42.00	8.30	8.21	-1.57
7113.00	45.6800	355.2800	-92.12	890.97	6967.59	-99.27	1121.83	1121.83	43.00	8.79	8.67	2.05
7155.00	45.6800	355.7600	-62.17	886.62	6996.94	-69.30	1151.66	1151.66	42.00	0.82	0.00	1.14
7198.00	47.9800	359.8400	-30.85	887.44	7026.97	-37.97	1183.02	1183.02	43.00	8.72	8.30	9.49
7241.00	51.1000	1.1000	1.88	887.72	7054.27	-5.27	1215.73	1215.73	43.00	7.63	7.30	2.93
7283.00	55.8000	1.8300	35.54	886.62	7079.34	28.40	1249.42	1249.42	42.00	10.76	10.71	1.28
7326.00	57.4900	2.5700	71.38	889.84	7103.04	64.24	1285.29	1285.29	43.00	4.76	4.40	2.19
7368.00	61.4400	2.8300	107.52	891.48	7124.38	100.35	1321.48	1321.48	42.00	9.41	9.40	0.14
7411.00	63.7800	1.8800	145.68	892.98	7144.16	138.49	1359.64	1359.64	43.00	5.66	5.44	-1.74
7454.00	65.9600	3.5500	184.54	894.83	7162.42	177.35	1398.68	1398.68	43.00	8.16	8.05	3.88
7496.00	66.7800	3.3300	222.95	897.14	7179.26	215.74	1437.04	1437.04	42.00	8.03	1.99	-0.52
7539.00	69.9900	0.7100	262.59	896.54	7195.10	255.67	1477.00	1477.00	43.00	9.37	7.47	-6.09
7681.00	73.4800	358.5300	302.77	896.26	7205.26	295.54	1516.8					

	8113.00	92.5800	358.7800	780.09	861.82	7215.73	723.15	1945.82	84.00	2.46	-1.48	1.98
	8095.00	92.2400	358.0800	814.25	868.74	7212.15	808.03	2030.74	85.00	2.76	-0.40	2.73
Tie	MD ft	Incl deg	Azim deg	North ft	East ft	TVD ft	VS ft	Incr VS ft	Crs Len ft	DLS deg/100ft	Build deg/100ft	Turn deg/100ft
	8183.00	90.8000	358.8500	889.21	857.20	7209.90	893.00	2115.70	85.00	1.72	-1.69	-0.27
	8288.00	90.0000	0.3400	984.90	858.60	7209.31	977.99	2200.70	85.00	1.99	-0.94	1.75
	8353.00	86.5200	0.2100	1069.89	857.01	7210.40	1062.95	2255.69	85.00	1.75	-1.74	-0.15
	8438.00	86.2400	0.6300	1164.85	857.78	7212.81	1147.93	2370.85	85.00	0.80	-0.33	0.73
	8523.00	87.8700	1.4800	1239.79	859.48	7215.69	1232.85	2455.80	85.00	0.86	-0.44	0.74
	8608.00	86.2700	1.7700	1324.70	861.87	7216.55	1317.74	2540.58	85.00	0.60	0.47	0.38
	8693.00	89.2900	3.0300	1409.61	865.43	7220.36	1402.61	2625.53	85.00	1.91	1.20	1.48
	8778.00	89.5600	2.6800	1494.50	869.65	7221.22	1487.47	2710.53	85.00	0.54	0.32	-0.44
	8863.00	89.3500	2.5400	1579.41	873.51	7222.03	1572.34	2795.53	85.00	0.28	-0.25	-0.14
	8948.00	89.5600	3.2800	1664.28	876.33	7222.83	1657.15	2880.52	85.00	1.69	0.25	1.67
	9033.00	90.5200	4.8100	1749.01	884.82	7222.78	1741.85	2965.52	85.00	1.51	1.13	1.00
	9119.00	90.9500	3.8400	1834.76	891.31	7221.67	1827.54	3051.51	85.00	1.23	0.50	-1.13
	9204.00	90.9200	2.6400	1919.80	898.26	7220.29	1912.35	3138.50	85.00	1.18	-0.04	-1.18
	9289.00	89.7800	1.7300	2004.53	899.65	7219.77	1997.24	3221.49	85.00	1.87	-1.34	-1.31
	9374.00	89.8200	0.6300	2089.51	901.40	7220.21	2082.21	3306.49	85.00	1.31	-0.19	-1.29
	9459.00	89.7200	358.0900	2174.51	901.19	7220.70	2167.20	3391.49	85.00	1.82	0.12	-1.51
	9544.00	89.8100	358.0300	2259.49	899.80	7221.05	2252.20	3476.49	85.00	0.13	0.11	-0.07
	9629.00	89.8900	358.0800	2344.47	897.65	7221.42	2337.18	3561.48	85.00	1.13	-0.14	-1.12
	9715.00	89.7800	357.8800	2430.40	894.48	7221.82	2423.15	3647.48	85.00	0.50	0.10	-0.49
	9800.00	90.0900	358.7100	2515.38	892.51	7221.91	2508.13	3732.48	85.00	2.44	0.38	2.41
	9885.00	89.2900	358.0400	2600.36	890.84	7222.37	2593.12	3817.47	85.00	2.18	-0.94	-1.98
	9970.00	89.9600	358.7900	2685.32	888.49	7222.93	2678.10	3902.47	85.00	1.18	0.79	0.89
	10055.00	89.7600	358.2700	2770.29	886.31	7223.15	2763.09	3987.47	85.00	0.68	-0.26	-0.61
	10140.00	89.0700	356.1200	2855.18	882.15	7224.02	2848.01	4072.48	85.00	2.65	-0.30	-2.53
	10225.00	88.3300	358.4200	2940.16	871.18	7227.86	3016.69	4241.41	189.00	0.47	-0.44	0.18
	10310.00	89.5000	358.8500	3025.09	864.14	7231.07	3186.55	4411.37	170.00	1.59	0.89	1.43
	10395.00	89.2200	0.9800	3109.97	863.86	7232.97	3356.52	4551.35	170.00	1.25	-0.16	1.24
	10480.00	90.0600	0.0200	3194.85	865.32	7234.04	3526.49	4751.34	170.00	0.74	0.49	-0.55
	10565.00	90.7400	0.7000	3279.74	868.39	7232.85	3697.47	4922.33	171.00	0.58	0.40	0.40
	11150.00	89.2900	358.7400	3364.64	867.04	7232.80	3867.45	5092.33	170.00	1.02	-0.85	-0.58
	11235.00	88.3200	358.7800	3449.53	864.84	7233.37	4038.41	5263.29	171.00	0.80	-0.57	-0.58
	11320.00	88.3900	1.4400	3534.42	865.18	7241.19	4208.31	5431.20	188.00	1.58	0.04	1.58
	11405.00	90.8300	0.8500	3619.31	868.28	7242.35	4378.24	5601.18	170.00	1.51	1.44	-0.48
	11490.00	90.1500	359.5100	3704.20	868.50	7240.89	4547.22	5772.17	171.00	0.78	-0.40	-0.67
	12075.00	90.8200	359.7400	3789.09	867.38	7239.45	4717.21	5942.17	170.00	0.42	0.39	0.14
	12160.00	91.7200	359.8500	3873.98	868.78	7235.68	4887.17	6112.12	170.00	0.53	0.53	0.08
	12245.00	89.8100	358.9900	3958.87	865.04	7233.40	5058.14	6283.10	171.00	1.22	-1.12	-0.50
	12330.00	89.8600	357.5500	4043.76	859.94	7234.18	5227.09	6452.09	189.00	0.86	-0.09	-0.85
	12415.00	89.5600	358.3000	4128.65	865.13	7235.09	5380.04	6585.08	133.00	0.57	-0.08	0.58
Projection to TD:	12711.00	89.5600	358.3000	5425.05	853.41	7235.53	5418.02	6643.09	58.00	0.00	0.00	0.00