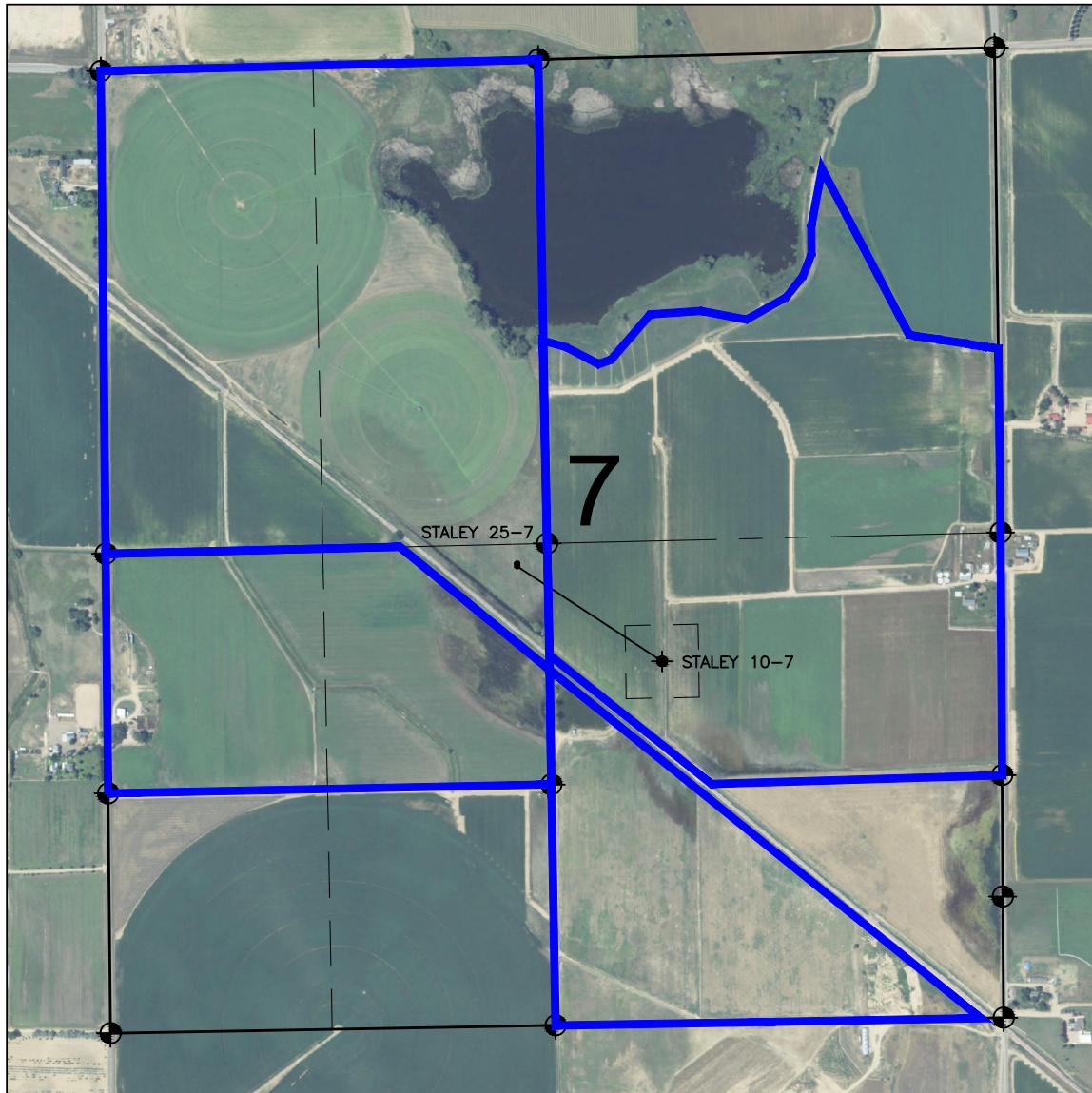


LEASE DRAWING: STALEY 7-J PAD



LEGEND

- = EXISTING MONUMENT
 = BOTTOM HOLE
 BH= BOTTOM HOLE
 = PROPOSED WELL
 = EXISTING WELL

NOTES:

STALEY 25-7 TO BE AT 2532' FSL, 2252' FWL.
 STALEY 10-7 TO BE AT 2517' FSL, 2252' FWL.
 BOTTOM HOLE AT 1982' FSL & 1856' FEL.

PREPARED BY:



BAYSWATER EXPLORATION & PRODUCTION, LLC

FIELD DATE:
04-24-13

PAD NAME:
STALEY 7-J PAD

DRAWING DATE:
07-03-13

SURFACE LOCATION:
NE 1/4 SW 1/4, SEC. 7, T6N, R67W, 6TH P.M.
WELD COUNTY, COLORADO

BY:
KAD

