

Synergy Resources

Well Name: **SRC Gilbert 42-14-11NHZ**

Surface Location: SRC Gilbert 42-14-11NHZ Pad Sec.14-T5N-R66W
North American Datum 1983 , US State Plane 1983 , Colorado Northern Zone

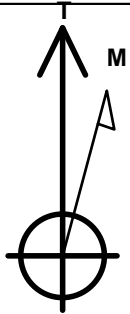
Ground Elevation: 4836.0

+N/-S	+E/-W	Northing	Easting	Latitude	Longitude	Slot
0.0	0.0	1389074.66	3210850.06	40.398941	-104.742939	

RKB-12' WELL @ 4848.0ft (RKB-12')

WELLBORE TARGET DETAILS

Name	TVD	+N/-S	+E/-W	Shape
SHL 2453'FSL & 2233'FEL, Sec.14	1.0	0.0	0.0	Point
BHL 2458'FSL & 737'FEL, Sec.11	7281.0	5231.6	1445.2	Point



Azimuths to True North
Magnetic North: 8.57°

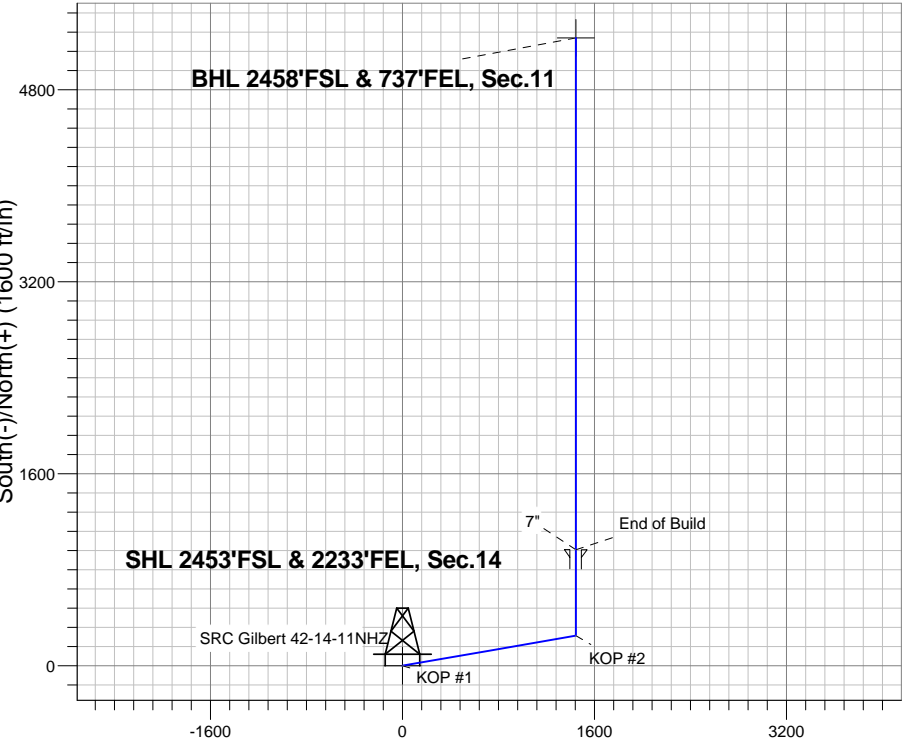
Magnetic Field
Strength: 52909.3srT
Dip Angle: 66.98°
Date: 7/30/2013
Model: IGRF2010

SRC Gilbert 42-14-11NHZ Pad Sec.14-T5N-R66W
SRC Gilbert 42-14-11NHZ
Plan #1 (7-30-13)
16:13, July 30 2013

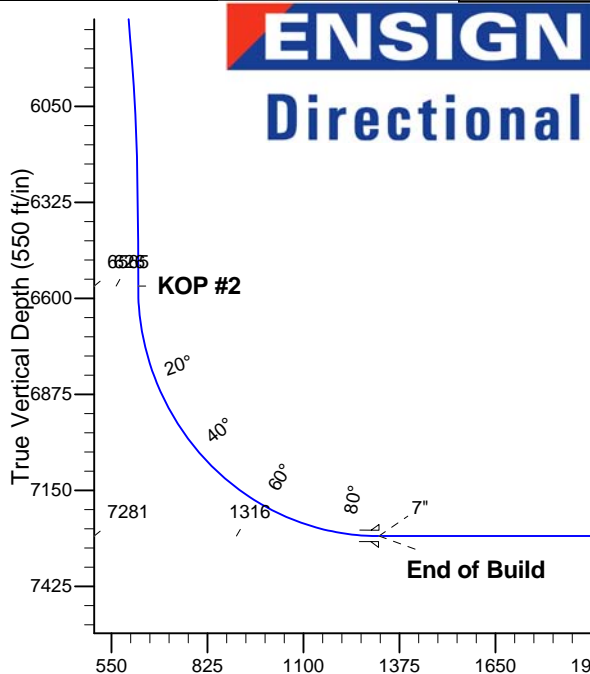
ANNOTATIONS

TVD	MD	Annotation
600.0	600.0	KOP #1
6564.8	6765.2	KOP #2
7281.0	7890.2	End of Build

South(-)/North(+) (1600 ft/in)



West(-)/East(+) (1600 ft/in)



SECTION DETAILS

Sec	MD	Inc	Azi	TVD	+N/-S	+E/-W	DLeg	TFace	VSec	Target
1	0.0	0.00	0.00	0.0	0.0	0.0	0.00	0.00	0.0	
2	600.0	0.00	0.00	600.0	0.0	0.0	0.00	0.00	0.0	
3	1421.7	16.43	80.19	1410.5	19.9	115.3	2.00	80.19	49.9	
4	5778.7	16.43	80.19	5589.5	230.1	1329.9	0.00	0.00	575.9	
5	6600.4	0.00	0.00	6400.0	250.0	1445.2	2.00	180.00	625.8	
6	6765.2	0.00	0.00	6564.8	250.0	1445.2	0.00	0.00	625.8	
7	7890.2	90.00	0.00	7281.0	966.2	1445.2	8.00	0.00	1316.2	
8	12155.6	90.00	0.00	7281.0	5231.6	1445.2	0.00	0.00	5427.5	BHL 2458'FSL & 737'FEL, Sec.11

BHL 2458'FSL & 737'FEL, Sec.11

Vertical Section at 15.44° (550 ft/in)



Synergy Resources

SEC.14-T5N-R66W

SRC Gilbert 42-14-11NHZ Pad Sec.14-T5N-R66W

SRC Gilbert 42-14-11NHZ

Wellbore #1

Plan: Plan #1 (7-30-13)

Standard Planning Report

30 July, 2013

Plan Sections										
Measured Depth (ft)	Inclination (°)	Azimuth (°)	Vertical Depth (ft)	+N/-S (ft)	+E/-W (ft)	Dogleg Rate (°/100ft)	Build Rate (°/100ft)	Turn Rate (°/100ft)	TFO (°)	Target
0.0	0.00	0.00	0.0	0.0	0.0	0.00	0.00	0.00	0.00	
600.0	0.00	0.00	600.0	0.0	0.0	0.00	0.00	0.00	0.00	
1,421.7	16.43	80.19	1,410.5	19.9	115.3	2.00	2.00	0.00	80.19	
5,778.7	16.43	80.19	5,589.5	230.1	1,329.9	0.00	0.00	0.00	0.00	
6,600.4	0.00	0.00	6,400.0	250.0	1,445.2	2.00	-2.00	0.00	180.00	
6,765.2	0.00	0.00	6,564.8	250.0	1,445.2	0.00	0.00	0.00	0.00	
7,890.2	90.00	0.00	7,281.0	966.2	1,445.2	8.00	8.00	0.00	0.00	
12,155.6	90.00	0.00	7,281.0	5,231.6	1,445.2	0.00	0.00	0.00	0.00	BHL 2458'FSL & 73

Database:	Landmark	Local Co-ordinate Reference:	Well SRC Gilbert 42-14-11NHZ
Company:	Synergy Resources	TVD Reference:	WELL @ 4848.0ft (RKB-12')
Project:	SEC.14-T5N-R66W	MD Reference:	WELL @ 4848.0ft (RKB-12')
Site:	SRC Gilbert 42-14-11NHZ Pad	North Reference:	True
	Sec.14-T5N-R66W		
Well:	SRC Gilbert 42-14-11NHZ	Survey Calculation Method:	Minimum Curvature
Wellbore:	Wellbore #1		
Design:	Plan #1 (7-30-13)		

Planned Survey

Measured Depth (ft)	Inclination (°)	Azimuth (°)	Vertical Depth (ft)	+N/-S (ft)	+E/-W (ft)	Vertical Section (ft)	Dogleg Rate (°/100ft)	Build Rate (°/100ft)	Turn Rate (°/100ft)
0.0	0.00	0.00	0.0	0.0	0.0	0.0	0.00	0.00	0.00
1.0	0.00	0.00	1.0	0.0	0.0	0.0	0.00	0.00	0.00
SHL 2453'FSL & 2233'FEL, Sec.14									
100.0	0.00	0.00	100.0	0.0	0.0	0.0	0.00	0.00	0.00
200.0	0.00	0.00	200.0	0.0	0.0	0.0	0.00	0.00	0.00
300.0	0.00	0.00	300.0	0.0	0.0	0.0	0.00	0.00	0.00
400.0	0.00	0.00	400.0	0.0	0.0	0.0	0.00	0.00	0.00
500.0	0.00	0.00	500.0	0.0	0.0	0.0	0.00	0.00	0.00
600.0	0.00	0.00	600.0	0.0	0.0	0.0	0.00	0.00	0.00
KOP #1									
700.0	2.00	80.19	700.0	0.3	1.7	0.7	2.00	2.00	0.00
800.0	4.00	80.19	799.8	1.2	6.9	3.0	2.00	2.00	0.00
900.0	6.00	80.19	899.5	2.7	15.5	6.7	2.00	2.00	0.00
1,000.0	8.00	80.19	998.7	4.8	27.5	11.9	2.00	2.00	0.00
1,100.0	10.00	80.19	1,097.5	7.4	42.9	18.6	2.00	2.00	0.00
1,200.0	12.00	80.19	1,195.6	10.7	61.7	26.7	2.00	2.00	0.00
1,300.0	14.00	80.19	1,293.1	14.5	83.9	36.3	2.00	2.00	0.00
1,400.0	16.00	80.19	1,389.6	18.9	109.4	47.4	2.00	2.00	0.00
1,421.7	16.43	80.19	1,410.5	19.9	115.3	49.9	2.00	2.00	0.00
1,500.0	16.43	80.19	1,485.6	23.7	137.2	59.4	0.00	0.00	0.00
1,600.0	16.43	80.19	1,581.5	28.5	165.0	71.5	0.00	0.00	0.00
1,700.0	16.43	80.19	1,677.4	33.4	192.9	83.5	0.00	0.00	0.00
1,800.0	16.43	80.19	1,773.3	38.2	220.8	95.6	0.00	0.00	0.00
1,900.0	16.43	80.19	1,869.2	43.0	248.7	107.7	0.00	0.00	0.00
2,000.0	16.43	80.19	1,965.2	47.8	276.5	119.7	0.00	0.00	0.00
2,100.0	16.43	80.19	2,061.1	52.7	304.4	131.8	0.00	0.00	0.00
2,200.0	16.43	80.19	2,157.0	57.5	332.3	143.9	0.00	0.00	0.00
2,300.0	16.43	80.19	2,252.9	62.3	360.2	156.0	0.00	0.00	0.00
2,400.0	16.43	80.19	2,348.8	67.1	388.0	168.0	0.00	0.00	0.00
2,500.0	16.43	80.19	2,444.7	71.9	415.9	180.1	0.00	0.00	0.00
2,600.0	16.43	80.19	2,540.6	76.8	443.8	192.2	0.00	0.00	0.00
2,700.0	16.43	80.19	2,636.6	81.6	471.7	204.2	0.00	0.00	0.00
2,800.0	16.43	80.19	2,732.5	86.4	499.5	216.3	0.00	0.00	0.00
2,900.0	16.43	80.19	2,828.4	91.2	527.4	228.4	0.00	0.00	0.00
3,000.0	16.43	80.19	2,924.3	96.1	555.3	240.5	0.00	0.00	0.00
3,100.0	16.43	80.19	3,020.2	100.9	583.2	252.5	0.00	0.00	0.00
3,200.0	16.43	80.19	3,116.1	105.7	611.1	264.6	0.00	0.00	0.00
3,300.0	16.43	80.19	3,212.0	110.5	638.9	276.7	0.00	0.00	0.00
3,400.0	16.43	80.19	3,308.0	115.3	666.8	288.7	0.00	0.00	0.00
3,500.0	16.43	80.19	3,403.9	120.2	694.7	300.8	0.00	0.00	0.00
3,600.0	16.43	80.19	3,499.8	125.0	722.6	312.9	0.00	0.00	0.00
3,700.0	16.43	80.19	3,595.7	129.8	750.4	325.0	0.00	0.00	0.00
3,800.0	16.43	80.19	3,691.6	134.6	778.3	337.0	0.00	0.00	0.00
3,900.0	16.43	80.19	3,787.5	139.5	806.2	349.1	0.00	0.00	0.00
4,000.0	16.43	80.19	3,883.4	144.3	834.1	361.2	0.00	0.00	0.00
4,100.0	16.43	80.19	3,979.4	149.1	861.9	373.2	0.00	0.00	0.00
4,200.0	16.43	80.19	4,075.3	153.9	889.8	385.3	0.00	0.00	0.00
4,300.0	16.43	80.19	4,171.2	158.7	917.7	397.4	0.00	0.00	0.00
4,400.0	16.43	80.19	4,267.1	163.6	945.6	409.4	0.00	0.00	0.00
4,500.0	16.43	80.19	4,363.0	168.4	973.5	421.5	0.00	0.00	0.00
4,600.0	16.43	80.19	4,458.9	173.2	1,001.3	433.6	0.00	0.00	0.00
4,700.0	16.43	80.19	4,554.9	178.0	1,029.2	445.7	0.00	0.00	0.00
4,800.0	16.43	80.19	4,650.8	182.9	1,057.1	457.7	0.00	0.00	0.00

Database:	Landmark	Local Co-ordinate Reference:	Well SRC Gilbert 42-14-11NHZ
Company:	Synergy Resources	TVD Reference:	WELL @ 4848.0ft (RKB-12')
Project:	SEC.14-T5N-R66W	MD Reference:	WELL @ 4848.0ft (RKB-12')
Site:	SRC Gilbert 42-14-11NHZ Pad	North Reference:	True
	Sec.14-T5N-R66W		
Well:	SRC Gilbert 42-14-11NHZ	Survey Calculation Method:	Minimum Curvature
Wellbore:	Wellbore #1		
Design:	Plan #1 (7-30-13)		

Planned Survey									
Measured Depth (ft)	Inclination (°)	Azimuth (°)	Vertical Depth (ft)	+N-S (ft)	+E-W (ft)	Vertical Section (ft)	Dogleg Rate (°/100ft)	Build Rate (°/100ft)	Turn Rate (°/100ft)
4,900.0	16.43	80.19	4,746.7	187.7	1,085.0	469.8	0.00	0.00	0.00
5,000.0	16.43	80.19	4,842.6	192.5	1,112.8	481.9	0.00	0.00	0.00
5,100.0	16.43	80.19	4,938.5	197.3	1,140.7	493.9	0.00	0.00	0.00
5,200.0	16.43	80.19	5,034.4	202.1	1,168.6	506.0	0.00	0.00	0.00
5,300.0	16.43	80.19	5,130.3	207.0	1,196.5	518.1	0.00	0.00	0.00
5,400.0	16.43	80.19	5,226.3	211.8	1,224.3	530.2	0.00	0.00	0.00
5,500.0	16.43	80.19	5,322.2	216.6	1,252.2	542.2	0.00	0.00	0.00
5,600.0	16.43	80.19	5,418.1	221.4	1,280.1	554.3	0.00	0.00	0.00
5,700.0	16.43	80.19	5,514.0	226.3	1,308.0	566.4	0.00	0.00	0.00
5,778.7	16.43	80.19	5,589.5	230.1	1,329.9	575.9	0.00	0.00	0.00
5,800.0	16.01	80.19	5,609.9	231.1	1,335.8	578.4	2.00	-2.00	0.00
5,900.0	14.01	80.19	5,706.5	235.5	1,361.3	589.5	2.00	-2.00	0.00
6,000.0	12.01	80.19	5,803.9	239.3	1,383.5	599.1	2.00	-2.00	0.00
6,100.0	10.01	80.19	5,902.1	242.6	1,402.3	607.2	2.00	-2.00	0.00
6,200.0	8.01	80.19	6,000.9	245.2	1,417.7	613.9	2.00	-2.00	0.00
6,300.0	6.01	80.19	6,100.1	247.3	1,429.7	619.1	2.00	-2.00	0.00
6,400.0	4.01	80.19	6,199.7	248.8	1,438.3	622.8	2.00	-2.00	0.00
6,500.0	2.01	80.19	6,299.6	249.7	1,443.5	625.1	2.00	-2.00	0.00
6,600.0	0.01	80.19	6,399.6	250.0	1,445.2	625.8	2.00	-2.00	0.00
6,600.4	0.00	0.00	6,400.0	250.0	1,445.2	625.8	2.00	-2.00	0.00
6,700.0	0.00	0.00	6,499.6	250.0	1,445.2	625.8	0.00	0.00	0.00
6,765.2	0.00	0.00	6,564.8	250.0	1,445.2	625.8	0.00	0.00	0.00
KOP #2									
6,800.0	2.78	0.00	6,599.5	250.8	1,445.2	626.6	7.99	7.99	0.00
6,900.0	10.78	0.00	6,698.8	262.6	1,445.2	638.0	8.00	8.00	0.00
7,000.0	18.78	0.00	6,795.4	288.1	1,445.2	662.6	8.00	8.00	0.00
7,100.0	26.78	0.00	6,887.5	326.8	1,445.2	699.9	8.00	8.00	0.00
7,200.0	34.78	0.00	6,973.3	378.0	1,445.2	749.2	8.00	8.00	0.00
7,300.0	42.78	0.00	7,051.2	440.5	1,445.2	809.5	8.00	8.00	0.00
7,400.0	50.78	0.00	7,119.7	513.4	1,445.2	879.7	8.00	8.00	0.00
7,500.0	58.78	0.00	7,177.3	595.0	1,445.2	958.3	8.00	8.00	0.00
7,600.0	66.78	0.00	7,223.0	683.8	1,445.2	1,044.0	8.00	8.00	0.00
7,700.0	74.78	0.00	7,255.9	778.2	1,445.2	1,134.9	8.00	8.00	0.00
7,800.0	82.78	0.00	7,275.3	876.2	1,445.2	1,229.4	8.00	8.00	0.00
7,890.2	90.00	0.00	7,281.0	966.2	1,445.2	1,316.1	8.00	8.00	0.00
End of Build - 7"									
7,900.0	90.00	0.00	7,281.0	976.0	1,445.2	1,325.6	0.03	0.03	0.00
8,000.0	90.00	0.00	7,281.0	1,076.0	1,445.2	1,422.0	0.00	0.00	0.00
8,100.0	90.00	0.00	7,281.0	1,176.0	1,445.2	1,518.3	0.00	0.00	0.00
8,200.0	90.00	0.00	7,281.0	1,276.0	1,445.2	1,614.7	0.00	0.00	0.00
8,300.0	90.00	0.00	7,281.0	1,376.0	1,445.2	1,711.1	0.00	0.00	0.00
8,400.0	90.00	0.00	7,281.0	1,476.0	1,445.2	1,807.5	0.00	0.00	0.00
8,500.0	90.00	0.00	7,281.0	1,576.0	1,445.2	1,903.9	0.00	0.00	0.00
8,600.0	90.00	0.00	7,281.0	1,676.0	1,445.2	2,000.3	0.00	0.00	0.00
8,700.0	90.00	0.00	7,281.0	1,776.0	1,445.2	2,096.7	0.00	0.00	0.00
8,800.0	90.00	0.00	7,281.0	1,876.0	1,445.2	2,193.1	0.00	0.00	0.00
8,900.0	90.00	0.00	7,281.0	1,976.0	1,445.2	2,289.5	0.00	0.00	0.00
9,000.0	90.00	0.00	7,281.0	2,076.0	1,445.2	2,385.8	0.00	0.00	0.00
9,100.0	90.00	0.00	7,281.0	2,176.0	1,445.2	2,482.2	0.00	0.00	0.00
9,200.0	90.00	0.00	7,281.0	2,276.0	1,445.2	2,578.6	0.00	0.00	0.00
9,300.0	90.00	0.00	7,281.0	2,376.0	1,445.2	2,675.0	0.00	0.00	0.00
9,400.0	90.00	0.00	7,281.0	2,476.0	1,445.2	2,771.4	0.00	0.00	0.00
9,500.0	90.00	0.00	7,281.0	2,576.0	1,445.2	2,867.8	0.00	0.00	0.00

Database:	Landmark	Local Co-ordinate Reference:	Well SRC Gilbert 42-14-11NHZ
Company:	Synergy Resources	TVD Reference:	WELL @ 4848.0ft (RKB-12')
Project:	SEC.14-T5N-R66W	MD Reference:	WELL @ 4848.0ft (RKB-12')
Site:	SRC Gilbert 42-14-11NHZ Pad Sec.14-T5N-R66W	North Reference:	True
Well:	SRC Gilbert 42-14-11NHZ	Survey Calculation Method:	Minimum Curvature
Wellbore:	Wellbore #1		
Design:	Plan #1 (7-30-13)		

Plan Annotations				
Measured Depth (ft)	Vertical Depth (ft)	Local Coordinates		Comment
		+N/-S (ft)	+E/-W (ft)	
600.0	600.0	0.0	0.0	KOP #1
6,765.2	6,564.8	250.0	1,445.2	KOP #2
7,890.2	7,281.0	966.2	1,445.2	End of Build