

Synergy Resources

Well Name: **SRC Gilbert 0-14-11NHZ**

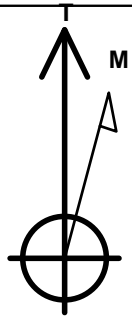
Surface Location: SRC Gilbert 42-14-11NHZ Pad Sec.14-T5N-R66W
 North American Datum 1983 , US State Plane 1983 , Colorado Northern Zone
 Ground Elevation: 4835.0

+N/-S	+E/-W	Northing	Easting	Latitude	Longitude	Slot
0.0	0.0	1389104.48	3210805.24	40.399024	-104.743099	

RKB-12' WELL @ 4847.0ft (RKB-12')

WELLBORE TARGET DETAILS

Name	TVD	+N/-S	+E/-W	Shape
SHL 2483'FSL & 2267'FEL, Sec.14	1.0	0.0	0.0	Point
BHL 2337'FSL & 2947'FEL, Sec.11	7281.0	5126.3	-719.3	Point



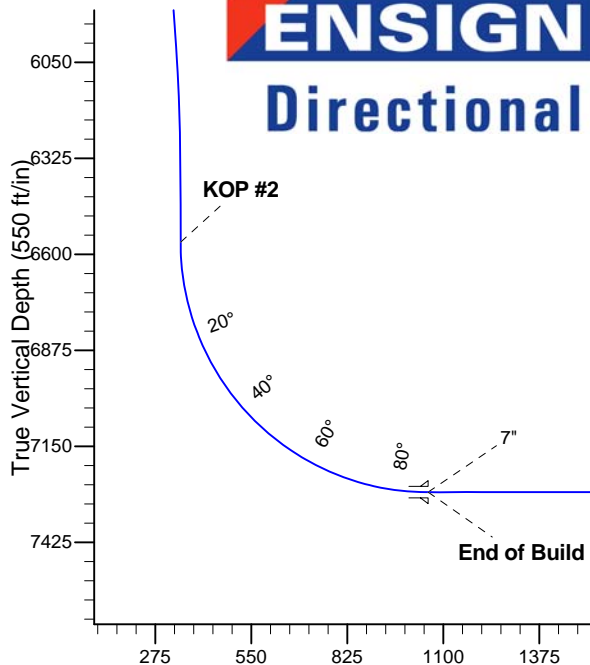
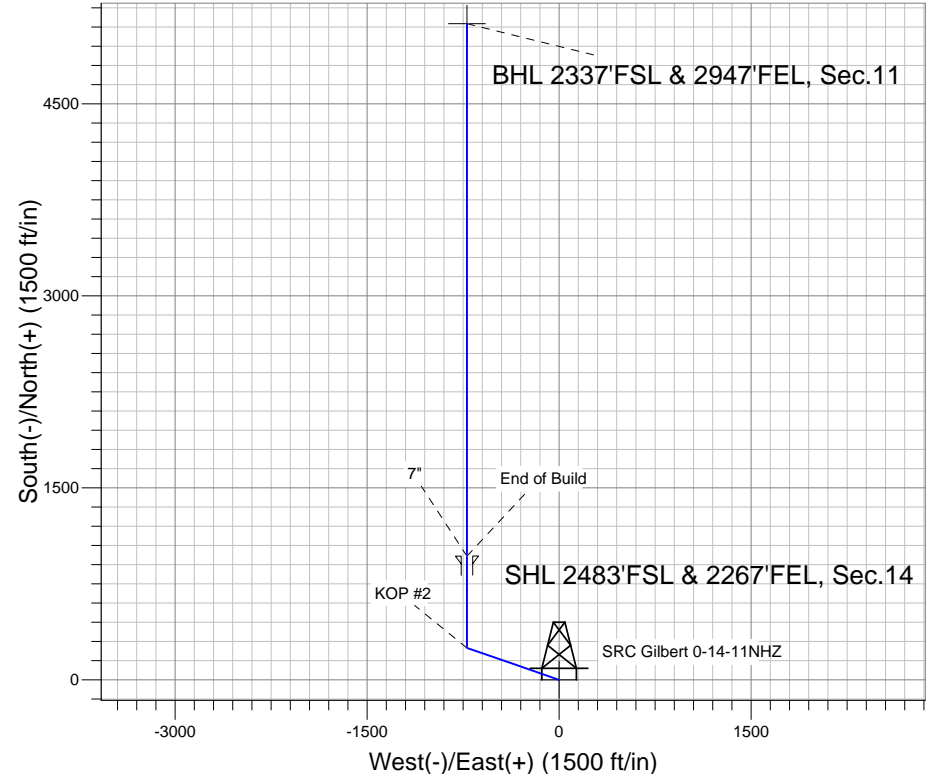
Azimuths to True North
 Magnetic North: 8.57°

Magnetic Field
 Strength: 52909.3nT
 Dip Angle: 66.98°
 Date: 7/30/2013
 Model: IGRF2010

SRC Gilbert 42-14-11NHZ Pad Sec.14-T5N-R66W
 SRC Gilbert 0-14-11NHZ
 Plan #1 (7-30-13)
 16:20, July 30 2013

ANNOTATIONS

TVD	MD	Annotation
1000.0	1000.0	KOP #1
6564.8	6621.2	KOP #2
7281.0	7746.2	End of Build



SECTION DETAILS

Sec	MD	Inc	Azi	TVD	+N/-S	+E/-W	DLeg	TFace	VSec	Target
1	0.0	0.00	0.00	0.0	0.0	0.0	0.00	0.00	0.0	
2	1000.0	0.00	0.00	1000.0	0.0	0.0	0.00	0.00	0.0	
3	1436.2	8.72	289.17	1434.5	10.9	-31.3	2.00	289.17	15.1	
4	6020.2	8.72	289.17	5965.5	239.1	-688.0	0.00	0.00	332.4	
5	6456.4	0.00	0.00	6400.0	250.0	-719.3	2.00	180.00	347.5	
6	6621.2	0.00	0.00	6564.8	250.0	-719.3	0.00	0.00	347.5	
7	7746.2	90.00	360.00	7281.0	966.2	-719.3	8.00	360.00	1056.8	
8	11906.3	90.00	360.00	7281.0	5126.3	-719.3	0.00	0.00	5176.5	BHL 2337'FSL & 2947'FEL, Sec.11

Vertical Section at 352.01° (550 ft/in)



Directional

Synergy Resources

SEC.14-T5N-R66W

SRC Gilbert 42-14-11NHZ Pad Sec.14-T5N-R66W

SRC Gilbert 0-14-11NHZ

Wellbore #1

Plan: Plan #1 (7-30-13)

Standard Planning Report

30 July, 2013

Database:	Landmark	Local Co-ordinate Reference:	Well SRC Gilbert 0-14-11NHZ
Company:	Synergy Resources	TVD Reference:	WELL @ 4847.0ft (RKB-12')
Project:	SEC.14-T5N-R66W	MD Reference:	WELL @ 4847.0ft (RKB-12')
Site:	SRC Gilbert 42-14-11NHZ Pad Sec.14-T5N-R66W	North Reference:	True
Well:	SRC Gilbert 0-14-11NHZ	Survey Calculation Method:	Minimum Curvature
Wellbore:	Wellbore #1		
Design:	Plan #1 (7-30-13)		

Project	SEC.14-T5N-R66W		
Map System:	US State Plane 1983	System Datum:	Mean Sea Level
Geo Datum:	North American Datum 1983		Using Well Reference Point
Map Zone:	Colorado Northern Zone		Using geodetic scale factor

Site						SRC Gilbert 42-14-11NHZ Pad Sec.14-T5N-R66W											
Site Position:						Northing:			1,389,074.67 ft			Latitude:			40.398941		
From:			Lat/Long			Easting:			3,210,850.06 ft			Longitude:			-104.742939		
Position Uncertainty:			0.0 ft			Slot Radius:			"			Grid Convergence:			0.49 °		

Well	SRC Gilbert 0-14-11NHZ					
Well Position	+N/-S	30.2 ft	Northing:	1,389,104.48 ft	Latitude:	40.399024
	+E/-W	-44.6 ft	Easting:	3,210,805.24 ft	Longitude:	-104.743099
Position Uncertainty		0.0 ft	Wellhead Elevation:	ft	Ground Level:	4,835.0 ft

Wellbore	Wellbore #1				
Magnetics	Model Name	Sample Date	Declination (°)	Dip Angle (°)	Field Strength (nT)
	IGRF2010	7/30/2013	8.57	66.98	52,909

Design	Plan #1 (7-30-13)			
Audit Notes:				
Version:	Phase:	PROTOTYPE	Tie On Depth:	0.0
Vertical Section:	Depth From (TVD) (ft)	+N/-S (ft)	+E/-W (ft)	Direction (°)
	0.0	0.0	0.0	352.01

Plan Sections										
Measured Depth (ft)	Inclination (°)	Azimuth (°)	Vertical Depth (ft)	+N/-S (ft)	+E/-W (ft)	Dogleg Rate (°/100ft)	Build Rate (°/100ft)	Turn Rate (°/100ft)	TFO (°)	Target
0.0	0.00	0.00	0.0	0.0	0.0	0.00	0.00	0.00	0.00	
1,000.0	0.00	0.00	1,000.0	0.0	0.0	0.00	0.00	0.00	0.00	
1,436.2	8.72	289.17	1,434.5	10.9	-31.3	2.00	2.00	0.00	289.17	
6,020.2	8.72	289.17	5,965.5	239.1	-688.0	0.00	0.00	0.00	0.00	
6,456.4	0.00	0.00	6,400.0	250.0	-719.3	2.00	-2.00	0.00	180.00	
6,621.2	0.00	0.00	6,564.8	250.0	-719.3	0.00	0.00	0.00	0.00	
7,746.2	90.00	360.00	7,281.0	966.2	-719.3	8.00	8.00	0.00	360.00	
11,906.3	90.00	360.00	7,281.0	5,126.3	-719.3	0.00	0.00	0.00	0.00	BHL 2337'FSL & 29

Database:	Landmark	Local Co-ordinate Reference:	Well SRC Gilbert 0-14-11NHZ
Company:	Synergy Resources	TVD Reference:	WELL @ 4847.0ft (RKB-12')
Project:	SEC.14-T5N-R66W	MD Reference:	WELL @ 4847.0ft (RKB-12')
Site:	SRC Gilbert 42-14-11NHZ Pad	North Reference:	True
	Sec.14-T5N-R66W		
Well:	SRC Gilbert 0-14-11NHZ	Survey Calculation Method:	Minimum Curvature
Wellbore:	Wellbore #1		
Design:	Plan #1 (7-30-13)		

Planned Survey									
Measured Depth (ft)	Inclination (°)	Azimuth (°)	Vertical Depth (ft)	+N/-S (ft)	+E/-W (ft)	Vertical Section (ft)	Dogleg Rate (°/100ft)	Build Rate (°/100ft)	Turn Rate (°/100ft)
0.0	0.00	0.00	0.0	0.0	0.0	0.0	0.00	0.00	0.00
1.0	0.00	0.00	1.0	0.0	0.0	0.0	0.00	0.00	0.00
SHL 2483'FSL & 2267'FEL, Sec.14									
40.0	0.00	0.00	40.0	0.0	0.0	0.0	0.00	0.00	0.00
80.0	0.00	0.00	80.0	0.0	0.0	0.0	0.00	0.00	0.00
120.0	0.00	0.00	120.0	0.0	0.0	0.0	0.00	0.00	0.00
160.0	0.00	0.00	160.0	0.0	0.0	0.0	0.00	0.00	0.00
200.0	0.00	0.00	200.0	0.0	0.0	0.0	0.00	0.00	0.00
240.0	0.00	0.00	240.0	0.0	0.0	0.0	0.00	0.00	0.00
280.0	0.00	0.00	280.0	0.0	0.0	0.0	0.00	0.00	0.00
320.0	0.00	0.00	320.0	0.0	0.0	0.0	0.00	0.00	0.00
360.0	0.00	0.00	360.0	0.0	0.0	0.0	0.00	0.00	0.00
400.0	0.00	0.00	400.0	0.0	0.0	0.0	0.00	0.00	0.00
440.0	0.00	0.00	440.0	0.0	0.0	0.0	0.00	0.00	0.00
480.0	0.00	0.00	480.0	0.0	0.0	0.0	0.00	0.00	0.00
520.0	0.00	0.00	520.0	0.0	0.0	0.0	0.00	0.00	0.00
560.0	0.00	0.00	560.0	0.0	0.0	0.0	0.00	0.00	0.00
600.0	0.00	0.00	600.0	0.0	0.0	0.0	0.00	0.00	0.00
640.0	0.00	0.00	640.0	0.0	0.0	0.0	0.00	0.00	0.00
680.0	0.00	0.00	680.0	0.0	0.0	0.0	0.00	0.00	0.00
720.0	0.00	0.00	720.0	0.0	0.0	0.0	0.00	0.00	0.00
760.0	0.00	0.00	760.0	0.0	0.0	0.0	0.00	0.00	0.00
800.0	0.00	0.00	800.0	0.0	0.0	0.0	0.00	0.00	0.00
840.0	0.00	0.00	840.0	0.0	0.0	0.0	0.00	0.00	0.00
880.0	0.00	0.00	880.0	0.0	0.0	0.0	0.00	0.00	0.00
920.0	0.00	0.00	920.0	0.0	0.0	0.0	0.00	0.00	0.00
960.0	0.00	0.00	960.0	0.0	0.0	0.0	0.00	0.00	0.00
1,000.0	0.00	0.00	1,000.0	0.0	0.0	0.0	0.00	0.00	0.00
KOP #1									
1,040.0	0.80	289.17	1,040.0	0.1	-0.3	0.1	2.00	2.00	0.00
1,080.0	1.60	289.17	1,080.0	0.4	-1.1	0.5	2.00	2.00	0.00
1,120.0	2.40	289.17	1,120.0	0.8	-2.4	1.1	2.00	2.00	0.00
1,160.0	3.20	289.17	1,159.9	1.5	-4.2	2.0	2.00	2.00	0.00
1,200.0	4.00	289.17	1,199.8	2.3	-6.6	3.2	2.00	2.00	0.00
1,240.0	4.80	289.17	1,239.7	3.3	-9.5	4.6	2.00	2.00	0.00
1,280.0	5.60	289.17	1,279.6	4.5	-12.9	6.2	2.00	2.00	0.00
1,320.0	6.40	289.17	1,319.3	5.9	-16.9	8.1	2.00	2.00	0.00
1,360.0	7.20	289.17	1,359.1	7.4	-21.3	10.3	2.00	2.00	0.00
1,400.0	8.00	289.17	1,398.7	9.2	-26.3	12.7	2.00	2.00	0.00
1,436.2	8.72	289.17	1,434.5	10.9	-31.3	15.1	2.00	2.00	0.00
1,440.0	8.72	289.17	1,438.3	11.1	-31.9	15.4	0.00	0.00	0.00
1,480.0	8.72	289.17	1,477.8	13.1	-37.6	18.2	0.00	0.00	0.00
1,520.0	8.72	289.17	1,517.3	15.1	-43.3	20.9	0.00	0.00	0.00
1,560.0	8.72	289.17	1,556.9	17.0	-49.0	23.7	0.00	0.00	0.00
1,600.0	8.72	289.17	1,596.4	19.0	-54.8	26.5	0.00	0.00	0.00
1,640.0	8.72	289.17	1,636.0	21.0	-60.5	29.2	0.00	0.00	0.00
1,680.0	8.72	289.17	1,675.5	23.0	-66.2	32.0	0.00	0.00	0.00
1,720.0	8.72	289.17	1,715.0	25.0	-72.0	34.8	0.00	0.00	0.00
1,760.0	8.72	289.17	1,754.6	27.0	-77.7	37.5	0.00	0.00	0.00
1,800.0	8.72	289.17	1,794.1	29.0	-83.4	40.3	0.00	0.00	0.00
1,840.0	8.72	289.17	1,833.6	31.0	-89.2	43.1	0.00	0.00	0.00
1,880.0	8.72	289.17	1,873.2	33.0	-94.9	45.8	0.00	0.00	0.00
1,920.0	8.72	289.17	1,912.7	35.0	-100.6	48.6	0.00	0.00	0.00

Database:	Landmark	Local Co-ordinate Reference:	Well SRC Gilbert 0-14-11NHZ
Company:	Synergy Resources	TVD Reference:	WELL @ 4847.0ft (RKB-12')
Project:	SEC.14-T5N-R66W	MD Reference:	WELL @ 4847.0ft (RKB-12')
Site:	SRC Gilbert 42-14-11NHZ Pad Sec.14-T5N-R66W	North Reference:	True
Well:	SRC Gilbert 0-14-11NHZ	Survey Calculation Method:	Minimum Curvature
Wellbore:	Wellbore #1		
Design:	Plan #1 (7-30-13)		

Planned Survey										
Measured Depth (ft)	Inclination (°)	Azimuth (°)	Vertical Depth (ft)	+N/-S (ft)	+E/-W (ft)	Vertical Section (ft)	Dogleg Rate (°/100ft)	Build Rate (°/100ft)	Turn Rate (°/100ft)	
1,960.0	8.72	289.17	1,952.3	37.0	-106.3	51.4	0.00	0.00	0.00	
2,000.0	8.72	289.17	1,991.8	39.0	-112.1	54.1	0.00	0.00	0.00	
2,040.0	8.72	289.17	2,031.3	40.9	-117.8	56.9	0.00	0.00	0.00	
2,080.0	8.72	289.17	2,070.9	42.9	-123.5	59.7	0.00	0.00	0.00	
2,120.0	8.72	289.17	2,110.4	44.9	-129.3	62.5	0.00	0.00	0.00	
2,160.0	8.72	289.17	2,149.9	46.9	-135.0	65.2	0.00	0.00	0.00	
2,200.0	8.72	289.17	2,189.5	48.9	-140.7	68.0	0.00	0.00	0.00	
2,240.0	8.72	289.17	2,229.0	50.9	-146.5	70.8	0.00	0.00	0.00	
2,280.0	8.72	289.17	2,268.6	52.9	-152.2	73.5	0.00	0.00	0.00	
2,320.0	8.72	289.17	2,308.1	54.9	-157.9	76.3	0.00	0.00	0.00	
2,360.0	8.72	289.17	2,347.6	56.9	-163.6	79.1	0.00	0.00	0.00	
2,400.0	8.72	289.17	2,387.2	58.9	-169.4	81.8	0.00	0.00	0.00	
2,440.0	8.72	289.17	2,426.7	60.9	-175.1	84.6	0.00	0.00	0.00	
2,480.0	8.72	289.17	2,466.2	62.9	-180.8	87.4	0.00	0.00	0.00	
2,520.0	8.72	289.17	2,505.8	64.8	-186.6	90.1	0.00	0.00	0.00	
2,560.0	8.72	289.17	2,545.3	66.8	-192.3	92.9	0.00	0.00	0.00	
2,600.0	8.72	289.17	2,584.9	68.8	-198.0	95.7	0.00	0.00	0.00	
2,640.0	8.72	289.17	2,624.4	70.8	-203.8	98.4	0.00	0.00	0.00	
2,680.0	8.72	289.17	2,663.9	72.8	-209.5	101.2	0.00	0.00	0.00	
2,720.0	8.72	289.17	2,703.5	74.8	-215.2	104.0	0.00	0.00	0.00	
2,760.0	8.72	289.17	2,743.0	76.8	-220.9	106.7	0.00	0.00	0.00	
2,800.0	8.72	289.17	2,782.5	78.8	-226.7	109.5	0.00	0.00	0.00	
2,840.0	8.72	289.17	2,822.1	80.8	-232.4	112.3	0.00	0.00	0.00	
2,880.0	8.72	289.17	2,861.6	82.8	-238.1	115.1	0.00	0.00	0.00	
2,920.0	8.72	289.17	2,901.2	84.8	-243.9	117.8	0.00	0.00	0.00	
2,960.0	8.72	289.17	2,940.7	86.8	-249.6	120.6	0.00	0.00	0.00	
3,000.0	8.72	289.17	2,980.2	88.7	-255.3	123.4	0.00	0.00	0.00	
3,040.0	8.72	289.17	3,019.8	90.7	-261.1	126.1	0.00	0.00	0.00	
3,080.0	8.72	289.17	3,059.3	92.7	-266.8	128.9	0.00	0.00	0.00	
3,120.0	8.72	289.17	3,098.8	94.7	-272.5	131.7	0.00	0.00	0.00	
3,160.0	8.72	289.17	3,138.4	96.7	-278.2	134.4	0.00	0.00	0.00	
3,200.0	8.72	289.17	3,177.9	98.7	-284.0	137.2	0.00	0.00	0.00	
3,240.0	8.72	289.17	3,217.5	100.7	-289.7	140.0	0.00	0.00	0.00	
3,280.0	8.72	289.17	3,257.0	102.7	-295.4	142.7	0.00	0.00	0.00	
3,320.0	8.72	289.17	3,296.5	104.7	-301.2	145.5	0.00	0.00	0.00	
3,360.0	8.72	289.17	3,336.1	106.7	-306.9	148.3	0.00	0.00	0.00	
3,400.0	8.72	289.17	3,375.6	108.7	-312.6	151.0	0.00	0.00	0.00	
3,440.0	8.72	289.17	3,415.1	110.7	-318.4	153.8	0.00	0.00	0.00	
3,480.0	8.72	289.17	3,454.7	112.6	-324.1	156.6	0.00	0.00	0.00	
3,520.0	8.72	289.17	3,494.2	114.6	-329.8	159.4	0.00	0.00	0.00	
3,560.0	8.72	289.17	3,533.8	116.6	-335.5	162.1	0.00	0.00	0.00	
3,600.0	8.72	289.17	3,573.3	118.6	-341.3	164.9	0.00	0.00	0.00	
3,640.0	8.72	289.17	3,612.8	120.6	-347.0	167.7	0.00	0.00	0.00	
3,680.0	8.72	289.17	3,652.4	122.6	-352.7	170.4	0.00	0.00	0.00	
3,720.0	8.72	289.17	3,691.9	124.6	-358.5	173.2	0.00	0.00	0.00	
3,760.0	8.72	289.17	3,731.4	126.6	-364.2	176.0	0.00	0.00	0.00	
3,800.0	8.72	289.17	3,771.0	128.6	-369.9	178.7	0.00	0.00	0.00	
3,840.0	8.72	289.17	3,810.5	130.6	-375.7	181.5	0.00	0.00	0.00	
3,880.0	8.72	289.17	3,850.0	132.6	-381.4	184.3	0.00	0.00	0.00	
3,920.0	8.72	289.17	3,889.6	134.5	-387.1	187.0	0.00	0.00	0.00	
3,960.0	8.72	289.17	3,929.1	136.5	-392.8	189.8	0.00	0.00	0.00	
4,000.0	8.72	289.17	3,968.7	138.5	-398.6	192.6	0.00	0.00	0.00	
4,040.0	8.72	289.17	4,008.2	140.5	-404.3	195.3	0.00	0.00	0.00	

Database:	Landmark	Local Co-ordinate Reference:	Well SRC Gilbert 0-14-11NHZ
Company:	Synergy Resources	TVD Reference:	WELL @ 4847.0ft (RKB-12')
Project:	SEC.14-T5N-R66W	MD Reference:	WELL @ 4847.0ft (RKB-12')
Site:	SRC Gilbert 42-14-11NHZ Pad	North Reference:	True
	Sec.14-T5N-R66W		
Well:	SRC Gilbert 0-14-11NHZ	Survey Calculation Method:	Minimum Curvature
Wellbore:	Wellbore #1		
Design:	Plan #1 (7-30-13)		

Planned Survey									
Measured Depth (ft)	Inclination (°)	Azimuth (°)	Vertical Depth (ft)	+N/-S (ft)	+E/-W (ft)	Vertical Section (ft)	Dogleg Rate (°/100ft)	Build Rate (°/100ft)	Turn Rate (°/100ft)
4,080.0	8.72	289.17	4,047.7	142.5	-410.0	198.1	0.00	0.00	0.00
4,120.0	8.72	289.17	4,087.3	144.5	-415.8	200.9	0.00	0.00	0.00
4,160.0	8.72	289.17	4,126.8	146.5	-421.5	203.6	0.00	0.00	0.00
4,200.0	8.72	289.17	4,166.3	148.5	-427.2	206.4	0.00	0.00	0.00
4,240.0	8.72	289.17	4,205.9	150.5	-433.0	209.2	0.00	0.00	0.00
4,280.0	8.72	289.17	4,245.4	152.5	-438.7	212.0	0.00	0.00	0.00
4,320.0	8.72	289.17	4,285.0	154.5	-444.4	214.7	0.00	0.00	0.00
4,360.0	8.72	289.17	4,324.5	156.5	-450.1	217.5	0.00	0.00	0.00
4,400.0	8.72	289.17	4,364.0	158.4	-455.9	220.3	0.00	0.00	0.00
4,440.0	8.72	289.17	4,403.6	160.4	-461.6	223.0	0.00	0.00	0.00
4,480.0	8.72	289.17	4,443.1	162.4	-467.3	225.8	0.00	0.00	0.00
4,520.0	8.72	289.17	4,482.6	164.4	-473.1	228.6	0.00	0.00	0.00
4,560.0	8.72	289.17	4,522.2	166.4	-478.8	231.3	0.00	0.00	0.00
4,600.0	8.72	289.17	4,561.7	168.4	-484.5	234.1	0.00	0.00	0.00
4,640.0	8.72	289.17	4,601.3	170.4	-490.3	236.9	0.00	0.00	0.00
4,680.0	8.72	289.17	4,640.8	172.4	-496.0	239.6	0.00	0.00	0.00
4,720.0	8.72	289.17	4,680.3	174.4	-501.7	242.4	0.00	0.00	0.00
4,760.0	8.72	289.17	4,719.9	176.4	-507.5	245.2	0.00	0.00	0.00
4,800.0	8.72	289.17	4,759.4	178.4	-513.2	247.9	0.00	0.00	0.00
4,840.0	8.72	289.17	4,798.9	180.4	-518.9	250.7	0.00	0.00	0.00
4,880.0	8.72	289.17	4,838.5	182.3	-524.6	253.5	0.00	0.00	0.00
4,920.0	8.72	289.17	4,878.0	184.3	-530.4	256.2	0.00	0.00	0.00
4,960.0	8.72	289.17	4,917.6	186.3	-536.1	259.0	0.00	0.00	0.00
5,000.0	8.72	289.17	4,957.1	188.3	-541.8	261.8	0.00	0.00	0.00
5,040.0	8.72	289.17	4,996.6	190.3	-547.6	264.6	0.00	0.00	0.00
5,080.0	8.72	289.17	5,036.2	192.3	-553.3	267.3	0.00	0.00	0.00
5,120.0	8.72	289.17	5,075.7	194.3	-559.0	270.1	0.00	0.00	0.00
5,160.0	8.72	289.17	5,115.2	196.3	-564.8	272.9	0.00	0.00	0.00
5,200.0	8.72	289.17	5,154.8	198.3	-570.5	275.6	0.00	0.00	0.00
5,240.0	8.72	289.17	5,194.3	200.3	-576.2	278.4	0.00	0.00	0.00
5,280.0	8.72	289.17	5,233.9	202.3	-581.9	281.2	0.00	0.00	0.00
5,320.0	8.72	289.17	5,273.4	204.3	-587.7	283.9	0.00	0.00	0.00
5,360.0	8.72	289.17	5,312.9	206.2	-593.4	286.7	0.00	0.00	0.00
5,400.0	8.72	289.17	5,352.5	208.2	-599.1	289.5	0.00	0.00	0.00
5,440.0	8.72	289.17	5,392.0	210.2	-604.9	292.2	0.00	0.00	0.00
5,480.0	8.72	289.17	5,431.5	212.2	-610.6	295.0	0.00	0.00	0.00
5,520.0	8.72	289.17	5,471.1	214.2	-616.3	297.8	0.00	0.00	0.00
5,560.0	8.72	289.17	5,510.6	216.2	-622.1	300.5	0.00	0.00	0.00
5,600.0	8.72	289.17	5,550.2	218.2	-627.8	303.3	0.00	0.00	0.00
5,640.0	8.72	289.17	5,589.7	220.2	-633.5	306.1	0.00	0.00	0.00
5,680.0	8.72	289.17	5,629.2	222.2	-639.2	308.8	0.00	0.00	0.00
5,720.0	8.72	289.17	5,668.8	224.2	-645.0	311.6	0.00	0.00	0.00
5,760.0	8.72	289.17	5,708.3	226.2	-650.7	314.4	0.00	0.00	0.00
5,800.0	8.72	289.17	5,747.8	228.2	-656.4	317.2	0.00	0.00	0.00
5,840.0	8.72	289.17	5,787.4	230.1	-662.2	319.9	0.00	0.00	0.00
5,880.0	8.72	289.17	5,826.9	232.1	-667.9	322.7	0.00	0.00	0.00
5,920.0	8.72	289.17	5,866.5	234.1	-673.6	325.5	0.00	0.00	0.00
5,960.0	8.72	289.17	5,906.0	236.1	-679.4	328.2	0.00	0.00	0.00
6,000.0	8.72	289.17	5,945.5	238.1	-685.1	331.0	0.00	0.00	0.00
6,020.2	8.72	289.17	5,965.5	239.1	-688.0	332.4	0.00	0.00	0.00
6,040.0	8.33	289.17	5,985.1	240.1	-690.8	333.7	2.00	-2.00	0.00
6,080.0	7.53	289.17	6,024.7	241.9	-696.0	336.3	2.00	-2.00	0.00
6,120.0	6.73	289.17	6,064.4	243.5	-700.6	338.5	2.00	-2.00	0.00

Database:	Landmark	Local Co-ordinate Reference:	Well SRC Gilbert 0-14-11NHZ
Company:	Synergy Resources	TVD Reference:	WELL @ 4847.0ft (RKB-12')
Project:	SEC.14-T5N-R66W	MD Reference:	WELL @ 4847.0ft (RKB-12')
Site:	SRC Gilbert 42-14-11NHZ Pad	North Reference:	True
	Sec.14-T5N-R66W		
Well:	SRC Gilbert 0-14-11NHZ	Survey Calculation Method:	Minimum Curvature
Wellbore:	Wellbore #1		
Design:	Plan #1 (7-30-13)		

Planned Survey									
Measured Depth (ft)	Inclination (°)	Azimuth (°)	Vertical Depth (ft)	+N/-S (ft)	+E/-W (ft)	Vertical Section (ft)	Dogleg Rate (°/100ft)	Build Rate (°/100ft)	Turn Rate (°/100ft)
6,160.0	5.93	289.17	6,104.1	245.0	-704.8	340.5	2.00	-2.00	0.00
6,200.0	5.13	289.17	6,144.0	246.2	-708.5	342.3	2.00	-2.00	0.00
6,240.0	4.33	289.17	6,183.8	247.3	-711.6	343.8	2.00	-2.00	0.00
6,280.0	3.53	289.17	6,223.7	248.2	-714.2	345.0	2.00	-2.00	0.00
6,320.0	2.73	289.17	6,263.7	248.9	-716.2	346.0	2.00	-2.00	0.00
6,360.0	1.93	289.17	6,303.6	249.5	-717.8	346.8	2.00	-2.00	0.00
6,400.0	1.13	289.17	6,343.6	249.8	-718.8	347.3	2.00	-2.00	0.00
6,440.0	0.33	289.17	6,383.6	250.0	-719.2	347.5	2.00	-2.00	0.00
6,456.4	0.00	0.00	6,400.0	250.0	-719.3	347.5	2.00	-2.00	0.00
6,480.0	0.00	0.00	6,423.6	250.0	-719.3	347.5	0.00	0.00	0.00
6,520.0	0.00	0.00	6,463.6	250.0	-719.3	347.5	0.00	0.00	0.00
6,560.0	0.00	0.00	6,503.6	250.0	-719.3	347.5	0.00	0.00	0.00
6,600.0	0.00	0.00	6,543.6	250.0	-719.3	347.5	0.00	0.00	0.00
6,621.2	0.00	0.00	6,564.8	250.0	-719.3	347.5	0.00	0.00	0.00
KOP #2									
6,640.0	1.50	360.00	6,583.6	250.2	-719.3	347.8	8.00	8.00	0.00
6,680.0	4.70	360.00	6,623.5	252.4	-719.3	349.9	8.00	8.00	0.00
6,720.0	7.90	360.00	6,663.3	256.8	-719.3	354.3	8.00	8.00	0.00
6,760.0	11.10	360.00	6,702.7	263.4	-719.3	360.8	8.00	8.00	0.00
6,800.0	14.30	360.00	6,741.8	272.2	-719.3	369.5	8.00	8.00	0.00
6,840.0	17.50	360.00	6,780.2	283.2	-719.3	380.4	8.00	8.00	0.00
6,880.0	20.70	360.00	6,818.0	296.3	-719.3	393.3	8.00	8.00	0.00
6,920.0	23.90	360.00	6,855.0	311.4	-719.3	408.4	8.00	8.00	0.00
6,960.0	27.10	360.00	6,891.1	328.7	-719.3	425.4	8.00	8.00	0.00
7,000.0	30.30	360.00	6,926.2	347.9	-719.3	444.4	8.00	8.00	0.00
7,040.0	33.50	360.00	6,960.1	369.0	-719.3	465.4	8.00	8.00	0.00
7,080.0	36.70	360.00	6,992.9	392.0	-719.3	488.1	8.00	8.00	0.00
7,120.0	39.90	360.00	7,024.3	416.8	-719.3	512.7	8.00	8.00	0.00
7,160.0	43.10	360.00	7,054.2	443.3	-719.3	538.9	8.00	8.00	0.00
7,200.0	46.30	360.00	7,082.6	471.4	-719.3	566.8	8.00	8.00	0.00
7,240.0	49.50	360.00	7,109.4	501.1	-719.3	596.2	8.00	8.00	0.00
7,280.0	52.70	360.00	7,134.6	532.2	-719.3	627.0	8.00	8.00	0.00
7,320.0	55.90	360.00	7,157.9	564.7	-719.3	659.2	8.00	8.00	0.00
7,360.0	59.10	360.00	7,179.4	598.4	-719.3	692.6	8.00	8.00	0.00
7,400.0	62.30	360.00	7,198.9	633.3	-719.3	727.1	8.00	8.00	0.00
7,440.0	65.50	360.00	7,216.5	669.2	-719.3	762.7	8.00	8.00	0.00
7,480.0	68.70	360.00	7,232.1	706.1	-719.3	799.2	8.00	8.00	0.00
7,520.0	71.90	360.00	7,245.6	743.7	-719.3	836.5	8.00	8.00	0.00
7,560.0	75.10	360.00	7,256.9	782.1	-719.3	874.5	8.00	8.00	0.00
7,600.0	78.30	360.00	7,266.1	821.0	-719.3	913.0	8.00	8.00	0.00
7,640.0	81.50	360.00	7,273.1	860.4	-719.3	952.0	8.00	8.00	0.00
7,680.0	84.70	360.00	7,277.9	900.1	-719.3	991.3	8.00	8.00	0.00
7,720.0	87.90	360.00	7,280.5	940.0	-719.3	1,030.8	8.00	8.00	0.00
7,746.2	90.00	360.00	7,281.0	966.2	-719.3	1,056.8	8.00	8.00	0.00
End of Build - 7"									
7,760.0	90.00	360.00	7,281.0	980.0	-719.3	1,070.4	0.00	0.00	0.00
7,800.0	90.00	360.00	7,281.0	1,020.0	-719.3	1,110.1	0.00	0.00	0.00
7,840.0	90.00	360.00	7,281.0	1,060.0	-719.3	1,149.7	0.00	0.00	0.00
7,880.0	90.00	360.00	7,281.0	1,100.0	-719.3	1,189.3	0.00	0.00	0.00
7,920.0	90.00	360.00	7,281.0	1,140.0	-719.3	1,228.9	0.00	0.00	0.00
7,960.0	90.00	360.00	7,281.0	1,180.0	-719.3	1,268.5	0.00	0.00	0.00
8,000.0	90.00	360.00	7,281.0	1,220.0	-719.3	1,308.1	0.00	0.00	0.00
8,040.0	90.00	360.00	7,281.0	1,260.0	-719.3	1,347.7	0.00	0.00	0.00

Database:	Landmark	Local Co-ordinate Reference:	Well SRC Gilbert 0-14-11NHZ
Company:	Synergy Resources	TVD Reference:	WELL @ 4847.0ft (RKB-12')
Project:	SEC.14-T5N-R66W	MD Reference:	WELL @ 4847.0ft (RKB-12')
Site:	SRC Gilbert 42-14-11NHZ Pad Sec.14-T5N-R66W	North Reference:	True
Well:	SRC Gilbert 0-14-11NHZ	Survey Calculation Method:	Minimum Curvature
Wellbore:	Wellbore #1		
Design:	Plan #1 (7-30-13)		

Planned Survey										
Measured Depth (ft)	Inclination (°)	Azimuth (°)	Vertical Depth (ft)	+N/-S (ft)	+E/-W (ft)	Vertical Section (ft)	Dogleg Rate (°/100ft)	Build Rate (°/100ft)	Turn Rate (°/100ft)	
8,080.0	90.00	360.00	7,281.0	1,300.0	-719.3	1,387.3	0.00	0.00	0.00	
8,120.0	90.00	360.00	7,281.0	1,340.0	-719.3	1,427.0	0.00	0.00	0.00	
8,160.0	90.00	360.00	7,281.0	1,380.0	-719.3	1,466.6	0.00	0.00	0.00	
8,200.0	90.00	360.00	7,281.0	1,420.0	-719.3	1,506.2	0.00	0.00	0.00	
8,240.0	90.00	360.00	7,281.0	1,460.0	-719.3	1,545.8	0.00	0.00	0.00	
8,280.0	90.00	360.00	7,281.0	1,500.0	-719.3	1,585.4	0.00	0.00	0.00	
8,320.0	90.00	360.00	7,281.0	1,540.0	-719.3	1,625.0	0.00	0.00	0.00	
8,360.0	90.00	360.00	7,281.0	1,580.0	-719.3	1,664.6	0.00	0.00	0.00	
8,400.0	90.00	360.00	7,281.0	1,620.0	-719.3	1,704.2	0.00	0.00	0.00	
8,440.0	90.00	360.00	7,281.0	1,660.0	-719.3	1,743.8	0.00	0.00	0.00	
8,480.0	90.00	360.00	7,281.0	1,700.0	-719.3	1,783.5	0.00	0.00	0.00	
8,520.0	90.00	360.00	7,281.0	1,740.0	-719.3	1,823.1	0.00	0.00	0.00	
8,560.0	90.00	360.00	7,281.0	1,780.0	-719.3	1,862.7	0.00	0.00	0.00	
8,600.0	90.00	360.00	7,281.0	1,820.0	-719.3	1,902.3	0.00	0.00	0.00	
8,640.0	90.00	360.00	7,281.0	1,860.0	-719.3	1,941.9	0.00	0.00	0.00	
8,680.0	90.00	360.00	7,281.0	1,900.0	-719.3	1,981.5	0.00	0.00	0.00	
8,720.0	90.00	360.00	7,281.0	1,940.0	-719.3	2,021.1	0.00	0.00	0.00	
8,760.0	90.00	360.00	7,281.0	1,980.0	-719.3	2,060.7	0.00	0.00	0.00	
8,800.0	90.00	360.00	7,281.0	2,020.0	-719.3	2,100.4	0.00	0.00	0.00	
8,840.0	90.00	360.00	7,281.0	2,060.0	-719.3	2,140.0	0.00	0.00	0.00	
8,880.0	90.00	360.00	7,281.0	2,100.0	-719.3	2,179.6	0.00	0.00	0.00	
8,920.0	90.00	360.00	7,281.0	2,140.0	-719.3	2,219.2	0.00	0.00	0.00	
8,960.0	90.00	360.00	7,281.0	2,180.0	-719.3	2,258.8	0.00	0.00	0.00	
9,000.0	90.00	360.00	7,281.0	2,220.0	-719.3	2,298.4	0.00	0.00	0.00	
9,040.0	90.00	360.00	7,281.0	2,260.0	-719.3	2,338.0	0.00	0.00	0.00	
9,080.0	90.00	360.00	7,281.0	2,300.0	-719.3	2,377.6	0.00	0.00	0.00	
9,120.0	90.00	360.00	7,281.0	2,340.0	-719.3	2,417.3	0.00	0.00	0.00	
9,160.0	90.00	360.00	7,281.0	2,380.0	-719.3	2,456.9	0.00	0.00	0.00	
9,200.0	90.00	360.00	7,281.0	2,420.0	-719.3	2,496.5	0.00	0.00	0.00	
9,240.0	90.00	360.00	7,281.0	2,460.0	-719.3	2,536.1	0.00	0.00	0.00	
9,280.0	90.00	360.00	7,281.0	2,500.0	-719.3	2,575.7	0.00	0.00	0.00	
9,320.0	90.00	360.00	7,281.0	2,540.0	-719.3	2,615.3	0.00	0.00	0.00	
9,360.0	90.00	360.00	7,281.0	2,580.0	-719.3	2,654.9	0.00	0.00	0.00	
9,400.0	90.00	360.00	7,281.0	2,620.0	-719.3	2,694.5	0.00	0.00	0.00	
9,440.0	90.00	360.00	7,281.0	2,660.0	-719.3	2,734.1	0.00	0.00	0.00	
9,480.0	90.00	360.00	7,281.0	2,700.0	-719.3	2,773.8	0.00	0.00	0.00	
9,520.0	90.00	360.00	7,281.0	2,740.0	-719.3	2,813.4	0.00	0.00	0.00	
9,560.0	90.00	360.00	7,281.0	2,780.0	-719.3	2,853.0	0.00	0.00	0.00	
9,600.0	90.00	360.00	7,281.0	2,820.0	-719.3	2,892.6	0.00	0.00	0.00	
9,640.0	90.00	360.00	7,281.0	2,860.0	-719.3	2,932.2	0.00	0.00	0.00	
9,680.0	90.00	360.00	7,281.0	2,900.0	-719.3	2,971.8	0.00	0.00	0.00	
9,720.0	90.00	360.00	7,281.0	2,940.0	-719.3	3,011.4	0.00	0.00	0.00	
9,760.0	90.00	360.00	7,281.0	2,980.0	-719.3	3,051.0	0.00	0.00	0.00	
9,800.0	90.00	360.00	7,281.0	3,020.0	-719.3	3,090.7	0.00	0.00	0.00	
9,840.0	90.00	360.00	7,281.0	3,060.0	-719.3	3,130.3	0.00	0.00	0.00	
9,880.0	90.00	360.00	7,281.0	3,100.0	-719.3	3,169.9	0.00	0.00	0.00	
9,920.0	90.00	360.00	7,281.0	3,140.0	-719.3	3,209.5	0.00	0.00	0.00	
9,960.0	90.00	360.00	7,281.0	3,180.0	-719.3	3,249.1	0.00	0.00	0.00	
10,000.0	90.00	360.00	7,281.0	3,220.0	-719.3	3,288.7	0.00	0.00	0.00	
10,040.0	90.00	360.00	7,281.0	3,260.0	-719.3	3,328.3	0.00	0.00	0.00	
10,080.0	90.00	360.00	7,281.0	3,300.0	-719.3	3,367.9	0.00	0.00	0.00	
10,120.0	90.00	360.00	7,281.0	3,340.0	-719.3	3,407.5	0.00	0.00	0.00	
10,160.0	90.00	360.00	7,281.0	3,380.0	-719.3	3,447.2	0.00	0.00	0.00	

Database:	Landmark	Local Co-ordinate Reference:	Well SRC Gilbert 0-14-11NHZ
Company:	Synergy Resources	TVD Reference:	WELL @ 4847.0ft (RKB-12')
Project:	SEC.14-T5N-R66W	MD Reference:	WELL @ 4847.0ft (RKB-12')
Site:	SRC Gilbert 42-14-11NHZ Pad Sec.14-T5N-R66W	North Reference:	True
Well:	SRC Gilbert 0-14-11NHZ	Survey Calculation Method:	Minimum Curvature
Wellbore:	Wellbore #1		
Design:	Plan #1 (7-30-13)		

Planned Survey

Measured Depth (ft)	Inclination (°)	Azimuth (°)	Vertical Depth (ft)	+N/-S (ft)	+E/-W (ft)	Vertical Section (ft)	Dogleg Rate (°/100ft)	Build Rate (°/100ft)	Turn Rate (°/100ft)
10,200.0	90.00	360.00	7,281.0	3,420.0	-719.3	3,486.8	0.00	0.00	0.00
10,240.0	90.00	360.00	7,281.0	3,460.0	-719.3	3,526.4	0.00	0.00	0.00
10,280.0	90.00	360.00	7,281.0	3,500.0	-719.3	3,566.0	0.00	0.00	0.00
10,320.0	90.00	360.00	7,281.0	3,540.0	-719.3	3,605.6	0.00	0.00	0.00
10,360.0	90.00	360.00	7,281.0	3,580.0	-719.3	3,645.2	0.00	0.00	0.00
10,400.0	90.00	360.00	7,281.0	3,620.0	-719.3	3,684.8	0.00	0.00	0.00
10,440.0	90.00	360.00	7,281.0	3,660.0	-719.3	3,724.4	0.00	0.00	0.00
10,480.0	90.00	360.00	7,281.0	3,700.0	-719.3	3,764.1	0.00	0.00	0.00
10,520.0	90.00	360.00	7,281.0	3,740.0	-719.3	3,803.7	0.00	0.00	0.00
10,560.0	90.00	360.00	7,281.0	3,780.0	-719.3	3,843.3	0.00	0.00	0.00
10,600.0	90.00	360.00	7,281.0	3,820.0	-719.3	3,882.9	0.00	0.00	0.00
10,640.0	90.00	360.00	7,281.0	3,860.0	-719.3	3,922.5	0.00	0.00	0.00
10,680.0	90.00	360.00	7,281.0	3,900.0	-719.3	3,962.1	0.00	0.00	0.00
10,720.0	90.00	360.00	7,281.0	3,940.0	-719.3	4,001.7	0.00	0.00	0.00
10,760.0	90.00	360.00	7,281.0	3,980.0	-719.3	4,041.3	0.00	0.00	0.00
10,800.0	90.00	360.00	7,281.0	4,020.0	-719.3	4,081.0	0.00	0.00	0.00
10,840.0	90.00	360.00	7,281.0	4,060.0	-719.3	4,120.6	0.00	0.00	0.00
10,880.0	90.00	360.00	7,281.0	4,100.0	-719.3	4,160.2	0.00	0.00	0.00
10,920.0	90.00	360.00	7,281.0	4,140.0	-719.3	4,199.8	0.00	0.00	0.00
10,960.0	90.00	360.00	7,281.0	4,180.0	-719.3	4,239.4	0.00	0.00	0.00
11,000.0	90.00	360.00	7,281.0	4,220.0	-719.3	4,279.0	0.00	0.00	0.00
11,040.0	90.00	360.00	7,281.0	4,260.0	-719.3	4,318.6	0.00	0.00	0.00
11,080.0	90.00	360.00	7,281.0	4,300.0	-719.3	4,358.2	0.00	0.00	0.00
11,120.0	90.00	360.00	7,281.0	4,340.0	-719.3	4,397.8	0.00	0.00	0.00
11,160.0	90.00	360.00	7,281.0	4,380.0	-719.3	4,437.5	0.00	0.00	0.00
11,200.0	90.00	360.00	7,281.0	4,420.0	-719.3	4,477.1	0.00	0.00	0.00
11,240.0	90.00	360.00	7,281.0	4,460.0	-719.3	4,516.7	0.00	0.00	0.00
11,280.0	90.00	360.00	7,281.0	4,500.0	-719.3	4,556.3	0.00	0.00	0.00
11,320.0	90.00	360.00	7,281.0	4,540.0	-719.3	4,595.9	0.00	0.00	0.00
11,360.0	90.00	360.00	7,281.0	4,580.0	-719.3	4,635.5	0.00	0.00	0.00
11,400.0	90.00	360.00	7,281.0	4,620.0	-719.3	4,675.1	0.00	0.00	0.00
11,440.0	90.00	360.00	7,281.0	4,660.0	-719.3	4,714.7	0.00	0.00	0.00
11,480.0	90.00	360.00	7,281.0	4,700.0	-719.3	4,754.4	0.00	0.00	0.00
11,520.0	90.00	360.00	7,281.0	4,740.0	-719.3	4,794.0	0.00	0.00	0.00
11,560.0	90.00	360.00	7,281.0	4,780.0	-719.3	4,833.6	0.00	0.00	0.00
11,600.0	90.00	360.00	7,281.0	4,820.0	-719.3	4,873.2	0.00	0.00	0.00
11,640.0	90.00	360.00	7,281.0	4,860.0	-719.3	4,912.8	0.00	0.00	0.00
11,680.0	90.00	360.00	7,281.0	4,900.0	-719.3	4,952.4	0.00	0.00	0.00
11,720.0	90.00	360.00	7,281.0	4,940.0	-719.3	4,992.0	0.00	0.00	0.00
11,760.0	90.00	360.00	7,281.0	4,980.0	-719.3	5,031.6	0.00	0.00	0.00
11,800.0	90.00	360.00	7,281.0	5,020.0	-719.3	5,071.3	0.00	0.00	0.00
11,840.0	90.00	360.00	7,281.0	5,060.0	-719.3	5,110.9	0.00	0.00	0.00
11,880.0	90.00	360.00	7,281.0	5,100.0	-719.3	5,150.5	0.00	0.00	0.00
11,906.3	90.00	360.00	7,281.0	5,126.3	-719.3	5,176.5	0.00	0.00	0.00

BHL 2337'FSL & 2947'FEL, Sec.11

Database:	Landmark	Local Co-ordinate Reference:	Well SRC Gilbert 0-14-11NHZ
Company:	Synergy Resources	TVD Reference:	WELL @ 4847.0ft (RKB-12')
Project:	SEC.14-T5N-R66W	MD Reference:	WELL @ 4847.0ft (RKB-12')
Site:	SRC Gilbert 42-14-11NHZ Pad	North Reference:	True
	Sec.14-T5N-R66W		
Well:	SRC Gilbert 0-14-11NHZ	Survey Calculation Method:	Minimum Curvature
Wellbore:	Wellbore #1		
Design:	Plan #1 (7-30-13)		

Targets

Target Name

- hit/miss target	Dip Angle	Dip Dir.	TVD	+N/-S	+E/-W	Northing	Easting	Latitude	Longitude
- Shape	(°)	(°)	(ft)	(ft)	(ft)	(ft)	(ft)		
BHL 2337'FSL & 2947	0.00	0.00	7,281.0	5,126.3	-719.3	1,394,224.24	3,210,042.26	40.413095	-104.745682
- plan hits target center									
- Point									
SHL 2483'FSL & 2267	0.00	0.00	1.0	0.0	0.0	1,389,104.53	3,210,805.24	40.399024	-104.743099
- plan hits target center									
- Point									

Casing Points

Measured Depth	Vertical Depth	Name	Casing Diameter	Hole Diameter
(ft)	(ft)		(")	(")
7,746.2	7,281.0	7"	7	7-1/2

Plan Annotations

Measured Depth	Vertical Depth	Local Coordinates		Comment
(ft)	(ft)	+N/-S (ft)	+E/-W (ft)	
1,000.0	1,000.0	0.0	0.0	KOP #1
6,621.2	6,564.8	250.0	-719.3	KOP #2
7,746.2	7,281.0	966.2	-719.3	End of Build