

# Synergy Resources

Well Name: **SRC Gilbert 12-14-11NHZ**

Surface Location: SRC Gilbert 42-14-11NHZ Pad Sec.14-T5N-R66W  
North American Datum 1983 , US State Plane 1983 , Colorado Northern Zone

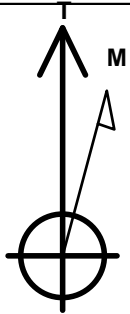
Ground Elevation: 4837.0

+N/-S	+E/-W	Northing	Easting	Latitude	Longitude	Slot
0.0	0.0	1389104.47	3210715.28	40.399026	-104.743422	

RKB-12' WELL @ 4849.0ft (RKB-12')

## WELLBORE TARGET DETAILS

Name	TVD	+N/-S	+E/-W	Shape
SHL 2481'FSL & 2357'FEL, Sec.14	1.0	0.0	0.0	Point
BHL 2211'FSL & 739'FWL, Sec. 11	7281.0	5050.6	-2844.8	Point



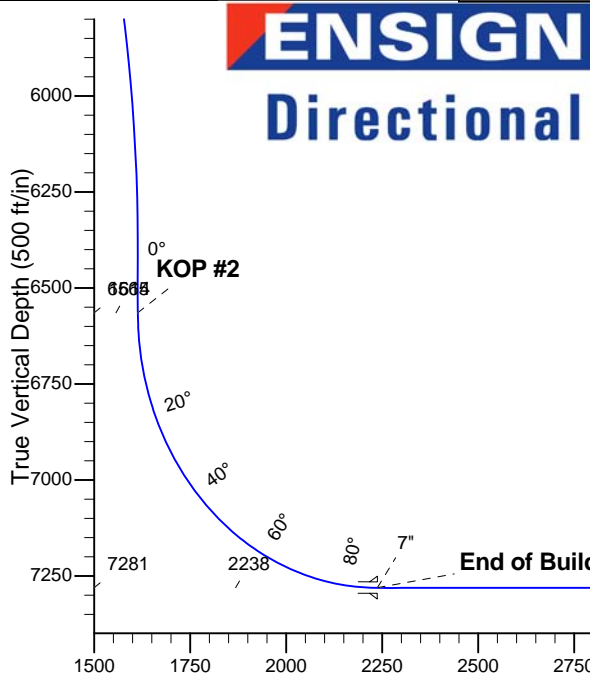
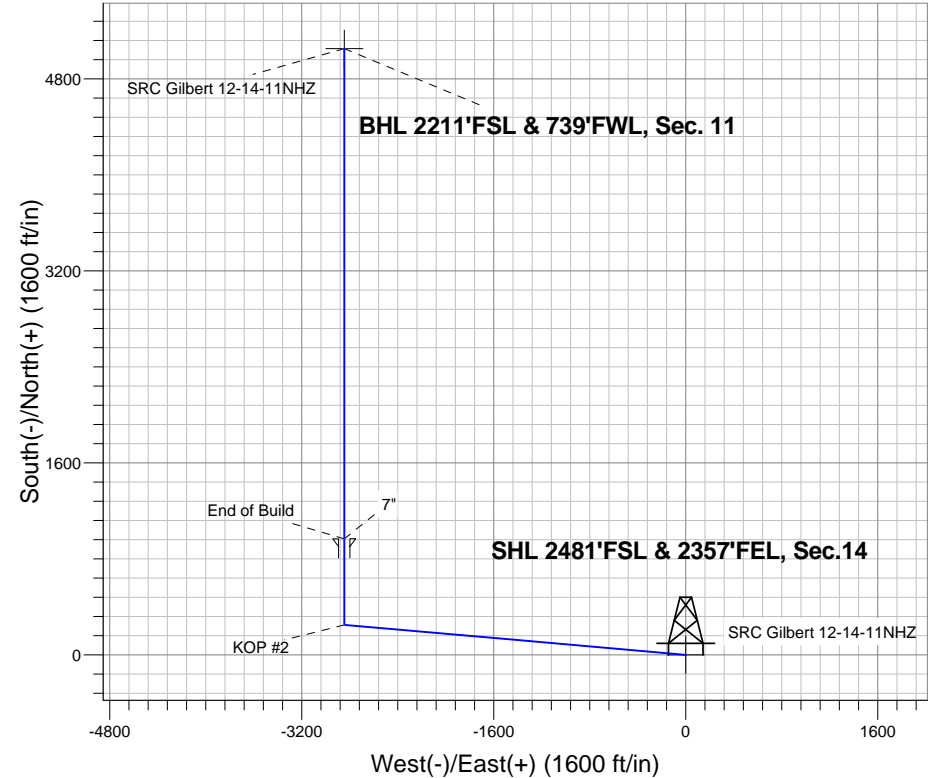
Azimuths to True North  
Magnetic North: 8.57°

Magnetic Field  
Strength: 52909.2srT  
Dip Angle: 66.98°  
Date: 7/30/2013  
Model: IGRF2010

SRC Gilbert 42-14-11NHZ Pad Sec.14-T5N-R66W  
SRC Gilbert 12-14-11NHZ  
Plan #1 (7-30-13)  
15:49, July 30 2013

## ANNOTATIONS

TVD	MD	Annotation
200.0	200.0	KOP #1
6564.8	7299.8	KOP #2
7281.0	8424.8	End of Build



## SECTION DETAILS

Sec	MD	Inc	Azi	TVD	+N/-S	+E/-W	DLeg	TFace	VSec	Target
1	0.0	0.00	0.00	0.0	0.0	0.0	0.00	0.00	0.0	
2	200.0	0.00	0.00	200.0	0.0	0.0	0.00	0.00	0.0	
3	1805.4	32.11	275.02	1722.7	38.4	-436.5	2.00	275.02	247.6	
4	5529.7	32.11	275.02	4877.3	211.6	-2408.4	0.00	0.00	1366.3	
5	7135.0	0.00	0.00	6400.0	250.0	-2844.8	2.00	180.00	1614.0	
6	7299.8	0.00	0.00	6564.8	250.0	-2844.8	0.00	0.00	1614.0	
7	8424.8	90.00	360.00	7281.0	966.2	-2844.8	8.00	360.00	2238.0	
8	12509.3	90.00	360.00	7281.0	5050.6	-2844.8	0.00	0.00	5796.7	BHL 2211'FSL & 739'FWL, Sec. 11

BHL 2211'FSL & 739'FWL, Sec. 11

Vertical Section at 330.61° (500 ft/in)



## **Synergy Resources**

**SEC.14-T5N-R66W**

**SRC Gilbert 42-14-11NHZ Pad Sec.14-T5N-R66W**

**SRC Gilbert 12-14-11NHZ**

**Wellbore #1**

**Plan: Plan #1 (7-30-13)**

## **Standard Planning Report**

**30 July, 2013**

<b>Database:</b>	Landmark	<b>Local Co-ordinate Reference:</b>	Well SRC Gilbert 12-14-11NHZ
<b>Company:</b>	Synergy Resources	<b>TVD Reference:</b>	WELL @ 4849.0ft (RKB-12')
<b>Project:</b>	SEC.14-T5N-R66W	<b>MD Reference:</b>	WELL @ 4849.0ft (RKB-12')
<b>Site:</b>	SRC Gilbert 42-14-11NHZ Pad Sec.14-T5N-R66W	<b>North Reference:</b>	True
<b>Well:</b>	SRC Gilbert 12-14-11NHZ	<b>Survey Calculation Method:</b>	Minimum Curvature
<b>Wellbore:</b>	Wellbore #1		
<b>Design:</b>	Plan #1 (7-30-13)		

<b>Project</b>	SEC.14-T5N-R66W		
<b>Map System:</b>	US State Plane 1983	<b>System Datum:</b>	Mean Sea Level
<b>Geo Datum:</b>	North American Datum 1983		Using Well Reference Point
<b>Map Zone:</b>	Colorado Northern Zone		Using geodetic scale factor

Site						SRC Gilbert 42-14-11NHZ Pad Sec.14-T5N-R66W											
Site Position:						Northing:			1,389,074.67 ft			Latitude:			40.398941		
From:			Lat/Long			Easting:			3,210,850.06 ft			Longitude:			-104.742939		
Position Uncertainty:			0.0 ft			Slot Radius:			"			Grid Convergence:			0.49 °		

Well	SRC Gilbert 12-14-11NHZ					
Well Position	+N-S	30.9 ft	Northing:	1,389,104.47 ft	Latitude:	40.399026
	+E-W	-134.5 ft	Easting:	3,210,715.28 ft	Longitude:	-104.743422
Position Uncertainty		0.0 ft	Wellhead Elevation:	ft	Ground Level:	4,837.0 ft

<b>Wellbore</b>	Wellbore #1				
<b>Magnetics</b>	<b>Model Name</b>	<b>Sample Date</b>	<b>Declination (°)</b>	<b>Dip Angle (°)</b>	<b>Field Strength (nT)</b>
	IGRF2010	7/30/2013	8.57	66.98	52,909

<b>Design</b>	Plan #1 (7-30-13)			
<b>Audit Notes:</b>				
<b>Version:</b>	<b>Phase:</b>	PROTOTYPE	<b>Tie On Depth:</b>	0.0
<b>Vertical Section:</b>	<b>Depth From (TVD) (ft)</b>	<b>+N/-S (ft)</b>	<b>+E/-W (ft)</b>	<b>Direction (°)</b>
	0.0	0.0	0.0	330.61

<b>Plan Sections</b>										
Measured Depth (ft)	Inclination (°)	Azimuth (°)	Vertical Depth (ft)	+N/-S (ft)	+E/-W (ft)	Dogleg Rate (°/100ft)	Build Rate (°/100ft)	Turn Rate (°/100ft)	TFO (°)	Target
0.0	0.00	0.00	0.0	0.0	0.0	0.00	0.00	0.00	0.00	
200.0	0.00	0.00	200.0	0.0	0.0	0.00	0.00	0.00	0.00	
1,805.4	32.11	275.02	1,722.7	38.4	-436.5	2.00	2.00	0.00	275.02	
5,529.7	32.11	275.02	4,877.3	211.6	-2,408.4	0.00	0.00	0.00	0.00	
7,135.0	0.00	0.00	6,400.0	250.0	-2,844.8	2.00	-2.00	0.00	180.00	
7,299.8	0.00	0.00	6,564.8	250.0	-2,844.8	0.00	0.00	0.00	0.00	
8,424.8	90.00	360.00	7,281.0	966.2	-2,844.8	8.00	8.00	0.00	360.00	
12,509.3	90.00	360.00	7,281.0	5,050.6	-2,844.8	0.00	0.00	0.00	0.00	BHL 2211'FSL & 73

<b>Database:</b>	Landmark	<b>Local Co-ordinate Reference:</b>	Well SRC Gilbert 12-14-11NHZ
<b>Company:</b>	Synergy Resources	<b>TVD Reference:</b>	WELL @ 4849.0ft (RKB-12')
<b>Project:</b>	SEC.14-T5N-R66W	<b>MD Reference:</b>	WELL @ 4849.0ft (RKB-12')
<b>Site:</b>	SRC Gilbert 42-14-11NHZ Pad Sec.14-T5N-R66W	<b>North Reference:</b>	True
<b>Well:</b>	SRC Gilbert 12-14-11NHZ	<b>Survey Calculation Method:</b>	Minimum Curvature
<b>Wellbore:</b>	Wellbore #1		
<b>Design:</b>	Plan #1 (7-30-13)		

Planned Survey									
Measured Depth (ft)	Inclination (°)	Azimuth (°)	Vertical Depth (ft)	+N/-S (ft)	+E/-W (ft)	Vertical Section (ft)	Dogleg Rate (°/100ft)	Build Rate (°/100ft)	Turn Rate (°/100ft)
0.0	0.00	0.00	0.0	0.0	0.0	0.0	0.00	0.00	0.00
1.0	0.00	0.00	1.0	0.0	0.0	0.0	0.00	0.00	0.00
<b>SHL 2481'FSL &amp; 2357'FEL, Sec.14</b>									
100.0	0.00	0.00	100.0	0.0	0.0	0.0	0.00	0.00	0.00
200.0	0.00	0.00	200.0	0.0	0.0	0.0	0.00	0.00	0.00
<b>KOP #1</b>									
300.0	2.00	275.02	300.0	0.2	-1.7	1.0	2.00	2.00	0.00
400.0	4.00	275.02	399.8	0.6	-7.0	3.9	2.00	2.00	0.00
500.0	6.00	275.02	499.5	1.4	-15.6	8.9	2.00	2.00	0.00
600.0	8.00	275.02	598.7	2.4	-27.8	15.8	2.00	2.00	0.00
700.0	10.00	275.02	697.5	3.8	-43.4	24.6	2.00	2.00	0.00
800.0	12.00	275.02	795.6	5.5	-62.4	35.4	2.00	2.00	0.00
900.0	14.00	275.02	893.1	7.4	-84.8	48.1	2.00	2.00	0.00
1,000.0	16.00	275.02	989.6	9.7	-110.6	62.7	2.00	2.00	0.00
1,100.0	18.00	275.02	1,085.3	12.3	-139.7	79.2	2.00	2.00	0.00
1,200.0	20.00	275.02	1,179.8	15.1	-172.1	97.6	2.00	2.00	0.00
1,300.0	22.00	275.02	1,273.2	18.3	-207.8	117.9	2.00	2.00	0.00
1,400.0	24.00	275.02	1,365.2	21.7	-246.7	140.0	2.00	2.00	0.00
1,500.0	26.00	275.02	1,455.8	25.4	-288.8	163.9	2.00	2.00	0.00
1,600.0	28.00	275.02	1,544.9	29.4	-334.0	189.5	2.00	2.00	0.00
1,700.0	30.00	275.02	1,632.4	33.6	-382.3	216.9	2.00	2.00	0.00
1,800.0	32.00	275.02	1,718.1	38.1	-433.6	246.0	2.00	2.00	0.00
1,805.4	32.11	275.02	1,722.7	38.4	-436.5	247.6	2.00	2.00	0.00
1,900.0	32.11	275.02	1,802.8	42.8	-486.6	276.1	0.00	0.00	0.00
2,000.0	32.11	275.02	1,887.5	47.4	-539.5	306.1	0.00	0.00	0.00
2,100.0	32.11	275.02	1,972.2	52.1	-592.5	336.1	0.00	0.00	0.00
2,200.0	32.11	275.02	2,056.9	56.7	-645.4	366.2	0.00	0.00	0.00
2,300.0	32.11	275.02	2,141.6	61.4	-698.4	396.2	0.00	0.00	0.00
2,400.0	32.11	275.02	2,226.3	66.0	-751.3	426.2	0.00	0.00	0.00
2,500.0	32.11	275.02	2,311.0	70.7	-804.3	456.3	0.00	0.00	0.00
2,600.0	32.11	275.02	2,395.8	75.3	-857.2	486.3	0.00	0.00	0.00
2,700.0	32.11	275.02	2,480.5	80.0	-910.2	516.4	0.00	0.00	0.00
2,800.0	32.11	275.02	2,565.2	84.6	-963.1	546.4	0.00	0.00	0.00
2,900.0	32.11	275.02	2,649.9	89.3	-1,016.0	576.4	0.00	0.00	0.00
3,000.0	32.11	275.02	2,734.6	93.9	-1,069.0	606.5	0.00	0.00	0.00
3,100.0	32.11	275.02	2,819.3	98.6	-1,121.9	636.5	0.00	0.00	0.00
3,200.0	32.11	275.02	2,904.0	103.2	-1,174.9	666.6	0.00	0.00	0.00
3,300.0	32.11	275.02	2,988.7	107.9	-1,227.8	696.6	0.00	0.00	0.00
3,400.0	32.11	275.02	3,073.4	112.6	-1,280.8	726.6	0.00	0.00	0.00
3,500.0	32.11	275.02	3,158.1	117.2	-1,333.7	756.7	0.00	0.00	0.00
3,600.0	32.11	275.02	3,242.8	121.9	-1,386.7	786.7	0.00	0.00	0.00
3,700.0	32.11	275.02	3,327.5	126.5	-1,439.6	816.7	0.00	0.00	0.00
3,800.0	32.11	275.02	3,412.2	131.2	-1,492.6	846.8	0.00	0.00	0.00
3,900.0	32.11	275.02	3,496.9	135.8	-1,545.5	876.8	0.00	0.00	0.00
4,000.0	32.11	275.02	3,581.6	140.5	-1,598.5	906.9	0.00	0.00	0.00
4,100.0	32.11	275.02	3,666.3	145.1	-1,651.4	936.9	0.00	0.00	0.00
4,200.0	32.11	275.02	3,751.0	149.8	-1,704.4	966.9	0.00	0.00	0.00
4,300.0	32.11	275.02	3,835.7	154.4	-1,757.3	997.0	0.00	0.00	0.00
4,400.0	32.11	275.02	3,920.5	159.1	-1,810.2	1,027.0	0.00	0.00	0.00
4,500.0	32.11	275.02	4,005.2	163.7	-1,863.2	1,057.0	0.00	0.00	0.00
4,600.0	32.11	275.02	4,089.9	168.4	-1,916.1	1,087.1	0.00	0.00	0.00
4,700.0	32.11	275.02	4,174.6	173.0	-1,969.1	1,117.1	0.00	0.00	0.00
4,800.0	32.11	275.02	4,259.3	177.7	-2,022.0	1,147.2	0.00	0.00	0.00

<b>Database:</b>	Landmark	<b>Local Co-ordinate Reference:</b>	Well SRC Gilbert 12-14-11NHZ
<b>Company:</b>	Synergy Resources	<b>TVD Reference:</b>	WELL @ 4849.0ft (RKB-12')
<b>Project:</b>	SEC.14-T5N-R66W	<b>MD Reference:</b>	WELL @ 4849.0ft (RKB-12')
<b>Site:</b>	SRC Gilbert 42-14-11NHZ Pad Sec.14-T5N-R66W	<b>North Reference:</b>	True
<b>Well:</b>	SRC Gilbert 12-14-11NHZ	<b>Survey Calculation Method:</b>	Minimum Curvature
<b>Wellbore:</b>	Wellbore #1		
<b>Design:</b>	Plan #1 (7-30-13)		

Planned Survey									
Measured Depth (ft)	Inclination (°)	Azimuth (°)	Vertical Depth (ft)	+N/-S (ft)	+E/-W (ft)	Vertical Section (ft)	Dogleg Rate (°/100ft)	Build Rate (°/100ft)	Turn Rate (°/100ft)
4,900.0	32.11	275.02	4,344.0	182.3	-2,075.0	1,177.2	0.00	0.00	0.00
5,000.0	32.11	275.02	4,428.7	187.0	-2,127.9	1,207.2	0.00	0.00	0.00
5,100.0	32.11	275.02	4,513.4	191.7	-2,180.9	1,237.3	0.00	0.00	0.00
5,200.0	32.11	275.02	4,598.1	196.3	-2,233.8	1,267.3	0.00	0.00	0.00
5,300.0	32.11	275.02	4,682.8	201.0	-2,286.8	1,297.4	0.00	0.00	0.00
5,400.0	32.11	275.02	4,767.5	205.6	-2,339.7	1,327.4	0.00	0.00	0.00
5,500.0	32.11	275.02	4,852.2	210.3	-2,392.7	1,357.4	0.00	0.00	0.00
5,529.7	32.11	275.02	4,877.3	211.6	-2,408.4	1,366.3	0.00	0.00	0.00
5,600.0	30.70	275.02	4,937.4	214.9	-2,444.9	1,387.1	2.00	-2.00	0.00
5,700.0	28.70	275.02	5,024.2	219.2	-2,494.2	1,415.1	2.00	-2.00	0.00
5,800.0	26.70	275.02	5,112.8	223.3	-2,540.5	1,441.3	2.00	-2.00	0.00
5,900.0	24.70	275.02	5,202.9	227.1	-2,583.7	1,465.8	2.00	-2.00	0.00
6,000.0	22.70	275.02	5,294.4	230.6	-2,623.8	1,488.5	2.00	-2.00	0.00
6,100.0	20.70	275.02	5,387.3	233.8	-2,660.6	1,509.4	2.00	-2.00	0.00
6,200.0	18.70	275.02	5,481.5	236.8	-2,694.2	1,528.5	2.00	-2.00	0.00
6,300.0	16.70	275.02	5,576.7	239.4	-2,724.5	1,545.7	2.00	-2.00	0.00
6,400.0	14.70	275.02	5,673.0	241.8	-2,751.4	1,561.0	2.00	-2.00	0.00
6,500.0	12.70	275.02	5,770.2	243.9	-2,775.0	1,574.4	2.00	-2.00	0.00
6,600.0	10.70	275.02	5,868.1	245.6	-2,795.2	1,585.8	2.00	-2.00	0.00
6,700.0	8.70	275.02	5,966.6	247.1	-2,812.0	1,595.3	2.00	-2.00	0.00
6,800.0	6.70	275.02	6,065.7	248.3	-2,825.3	1,602.9	2.00	-2.00	0.00
6,900.0	4.70	275.02	6,165.2	249.2	-2,835.2	1,608.5	2.00	-2.00	0.00
7,000.0	2.70	275.02	6,265.0	249.7	-2,841.7	1,612.2	2.00	-2.00	0.00
7,100.0	0.70	275.02	6,365.0	250.0	-2,844.6	1,613.9	2.00	-2.00	0.00
7,135.0	0.00	0.00	6,400.0	250.0	-2,844.8	1,614.0	2.00	-2.00	0.00
7,200.0	0.00	0.00	6,465.0	250.0	-2,844.8	1,614.0	0.00	0.00	0.00
7,299.8	0.00	0.00	6,564.8	250.0	-2,844.8	1,614.0	0.00	0.00	0.00
<b>KOP #2</b>									
7,300.0	0.00	360.00	6,565.0	250.0	-2,844.8	1,614.0	0.00	0.00	0.00
7,400.0	8.01	360.00	6,664.6	257.0	-2,844.8	1,620.1	8.01	8.01	0.00
7,500.0	16.01	360.00	6,762.4	277.8	-2,844.8	1,638.2	8.00	8.00	0.00
7,600.0	24.01	360.00	6,856.3	312.0	-2,844.8	1,668.0	8.00	8.00	0.00
7,700.0	32.01	360.00	6,944.5	358.9	-2,844.8	1,708.9	8.00	8.00	0.00
7,800.0	40.01	360.00	7,025.3	417.7	-2,844.8	1,760.1	8.00	8.00	0.00
7,900.0	48.01	360.00	7,097.1	487.1	-2,844.8	1,820.5	8.00	8.00	0.00
8,000.0	56.01	360.00	7,158.6	565.8	-2,844.8	1,889.2	8.00	8.00	0.00
8,100.0	64.01	360.00	7,208.6	652.4	-2,844.8	1,964.6	8.00	8.00	0.00
8,200.0	72.01	360.00	7,246.0	745.0	-2,844.8	2,045.3	8.00	8.00	0.00
8,300.0	80.01	360.00	7,270.1	842.0	-2,844.8	2,129.8	8.00	8.00	0.00
8,400.0	88.01	360.00	7,280.6	941.4	-2,844.8	2,216.4	8.00	8.00	0.00
8,424.8	90.00	360.00	7,281.0	966.2	-2,844.8	2,238.0	8.00	8.00	0.00
<b>End of Build - 7"</b>									
8,500.0	90.00	360.00	7,281.0	1,041.4	-2,844.8	2,303.5	0.00	0.00	0.00
8,600.0	90.00	360.00	7,281.0	1,141.4	-2,844.8	2,390.6	0.00	0.00	0.00
8,700.0	90.00	360.00	7,281.0	1,241.4	-2,844.8	2,477.7	0.00	0.00	0.00
8,800.0	90.00	360.00	7,281.0	1,341.4	-2,844.8	2,564.9	0.00	0.00	0.00
8,900.0	90.00	360.00	7,281.0	1,441.4	-2,844.8	2,652.0	0.00	0.00	0.00
9,000.0	90.00	360.00	7,281.0	1,541.4	-2,844.8	2,739.1	0.00	0.00	0.00
9,100.0	90.00	360.00	7,281.0	1,641.4	-2,844.8	2,826.3	0.00	0.00	0.00
9,200.0	90.00	360.00	7,281.0	1,741.4	-2,844.8	2,913.4	0.00	0.00	0.00
9,300.0	90.00	360.00	7,281.0	1,841.4	-2,844.8	3,000.5	0.00	0.00	0.00
9,400.0	90.00	360.00	7,281.0	1,941.4	-2,844.8	3,087.6	0.00	0.00	0.00
9,500.0	90.00	360.00	7,281.0	2,041.4	-2,844.8	3,174.8	0.00	0.00	0.00

<b>Database:</b>	Landmark	<b>Local Co-ordinate Reference:</b>	Well SRC Gilbert 12-14-11NHZ
<b>Company:</b>	Synergy Resources	<b>TVD Reference:</b>	WELL @ 4849.0ft (RKB-12')
<b>Project:</b>	SEC.14-T5N-R66W	<b>MD Reference:</b>	WELL @ 4849.0ft (RKB-12')
<b>Site:</b>	SRC Gilbert 42-14-11NHZ Pad	<b>North Reference:</b>	True
	Sec.14-T5N-R66W		
<b>Well:</b>	SRC Gilbert 12-14-11NHZ	<b>Survey Calculation Method:</b>	Minimum Curvature
<b>Wellbore:</b>	Wellbore #1		
<b>Design:</b>	Plan #1 (7-30-13)		

Planned Survey									
Measured Depth (ft)	Inclination (°)	Azimuth (°)	Vertical Depth (ft)	+N/-S (ft)	+E/-W (ft)	Vertical Section (ft)	Dogleg Rate (°/100ft)	Build Rate (°/100ft)	Turn Rate (°/100ft)
9,600.0	90.00	360.00	7,281.0	2,141.4	-2,844.8	3,261.9	0.00	0.00	0.00
9,700.0	90.00	360.00	7,281.0	2,241.4	-2,844.8	3,349.0	0.00	0.00	0.00
9,800.0	90.00	360.00	7,281.0	2,341.4	-2,844.8	3,436.2	0.00	0.00	0.00
9,900.0	90.00	360.00	7,281.0	2,441.4	-2,844.8	3,523.3	0.00	0.00	0.00
10,000.0	90.00	360.00	7,281.0	2,541.4	-2,844.8	3,610.4	0.00	0.00	0.00
10,100.0	90.00	360.00	7,281.0	2,641.4	-2,844.8	3,697.5	0.00	0.00	0.00
10,200.0	90.00	360.00	7,281.0	2,741.4	-2,844.8	3,784.7	0.00	0.00	0.00
10,300.0	90.00	360.00	7,281.0	2,841.4	-2,844.8	3,871.8	0.00	0.00	0.00
10,400.0	90.00	360.00	7,281.0	2,941.4	-2,844.8	3,958.9	0.00	0.00	0.00
10,500.0	90.00	360.00	7,281.0	3,041.4	-2,844.8	4,046.1	0.00	0.00	0.00
10,600.0	90.00	360.00	7,281.0	3,141.4	-2,844.8	4,133.2	0.00	0.00	0.00
10,700.0	90.00	360.00	7,281.0	3,241.4	-2,844.8	4,220.3	0.00	0.00	0.00
10,800.0	90.00	360.00	7,281.0	3,341.4	-2,844.8	4,307.4	0.00	0.00	0.00
10,900.0	90.00	360.00	7,281.0	3,441.4	-2,844.8	4,394.6	0.00	0.00	0.00
11,000.0	90.00	360.00	7,281.0	3,541.4	-2,844.8	4,481.7	0.00	0.00	0.00
11,100.0	90.00	360.00	7,281.0	3,641.4	-2,844.8	4,568.8	0.00	0.00	0.00
11,200.0	90.00	360.00	7,281.0	3,741.4	-2,844.8	4,656.0	0.00	0.00	0.00
11,300.0	90.00	360.00	7,281.0	3,841.4	-2,844.8	4,743.1	0.00	0.00	0.00
11,400.0	90.00	360.00	7,281.0	3,941.4	-2,844.8	4,830.2	0.00	0.00	0.00
11,500.0	90.00	360.00	7,281.0	4,041.4	-2,844.8	4,917.4	0.00	0.00	0.00
11,600.0	90.00	360.00	7,281.0	4,141.4	-2,844.8	5,004.5	0.00	0.00	0.00
11,700.0	90.00	360.00	7,281.0	4,241.4	-2,844.8	5,091.6	0.00	0.00	0.00
11,800.0	90.00	360.00	7,281.0	4,341.4	-2,844.8	5,178.7	0.00	0.00	0.00
11,900.0	90.00	360.00	7,281.0	4,441.4	-2,844.8	5,265.9	0.00	0.00	0.00
12,000.0	90.00	360.00	7,281.0	4,541.4	-2,844.8	5,353.0	0.00	0.00	0.00
12,100.0	90.00	360.00	7,281.0	4,641.4	-2,844.8	5,440.1	0.00	0.00	0.00
12,200.0	90.00	360.00	7,281.0	4,741.4	-2,844.8	5,527.3	0.00	0.00	0.00
12,300.0	90.00	360.00	7,281.0	4,841.4	-2,844.8	5,614.4	0.00	0.00	0.00
12,400.0	90.00	360.00	7,281.0	4,941.4	-2,844.8	5,701.5	0.00	0.00	0.00
12,500.0	90.00	360.00	7,281.0	5,041.4	-2,844.8	5,788.6	0.00	0.00	0.00
12,509.3	90.00	360.00	7,281.0	5,050.6	-2,844.8	5,796.7	0.00	0.00	0.00
BHL 2211'FSL & 739'FWL, Sec. 11									

Targets									
Target Name	Dip Angle (°)	Dip Dir. (°)	TVD (ft)	+N/-S (ft)	+E/-W (ft)	Northing (ft)	Easting (ft)	Latitude	Longitude
- hit/miss target									
- Shape									
BHL 2211'FSL & 739'I	0.00	0.00	7,281.0	5,050.6	-2,844.8	1,394,130.45	3,207,827.57	40.412889	-104.753638
- plan hits target center									
- Point									
SHL 2481'FSL & 2357	0.00	0.00	1.0	0.0	0.0	1,389,104.49	3,210,715.28	40.399026	-104.743422
- plan hits target center									
- Point									

<b>Database:</b>	Landmark	<b>Local Co-ordinate Reference:</b>	Well SRC Gilbert 12-14-11NHZ
<b>Company:</b>	Synergy Resources	<b>TVD Reference:</b>	WELL @ 4849.0ft (RKB-12')
<b>Project:</b>	SEC.14-T5N-R66W	<b>MD Reference:</b>	WELL @ 4849.0ft (RKB-12')
<b>Site:</b>	SRC Gilbert 42-14-11NHZ Pad Sec.14-T5N-R66W	<b>North Reference:</b>	True
<b>Well:</b>	SRC Gilbert 12-14-11NHZ	<b>Survey Calculation Method:</b>	Minimum Curvature
<b>Wellbore:</b>	Wellbore #1		
<b>Design:</b>	Plan #1 (7-30-13)		

#### Casing Points

Measured Depth (ft)	Vertical Depth (ft)	Name	Casing Diameter (")	Hole Diameter (")
8,424.8	7,281.0	7"	7	7-1/2

#### Plan Annotations

Measured Depth (ft)	Vertical Depth (ft)	Local Coordinates		Comment
		+N/-S (ft)	+E/-W (ft)	
200.0	200.0	0.0	0.0	KOP #1
7,299.8	6,564.8	250.0	-2,844.8	KOP #2
8,424.8	7,281.0	966.2	-2,844.8	End of Build