

T8N, R91W, 6th P.M.

AXIA ENERGY

Well location, BULLDOG #27-41H-891 (SURFACE LOCATION), located as shown in the NE 1/4 NE 1/4 of Section 27, T8N, R91W, 6th P.M., Moffat County, Colorado.

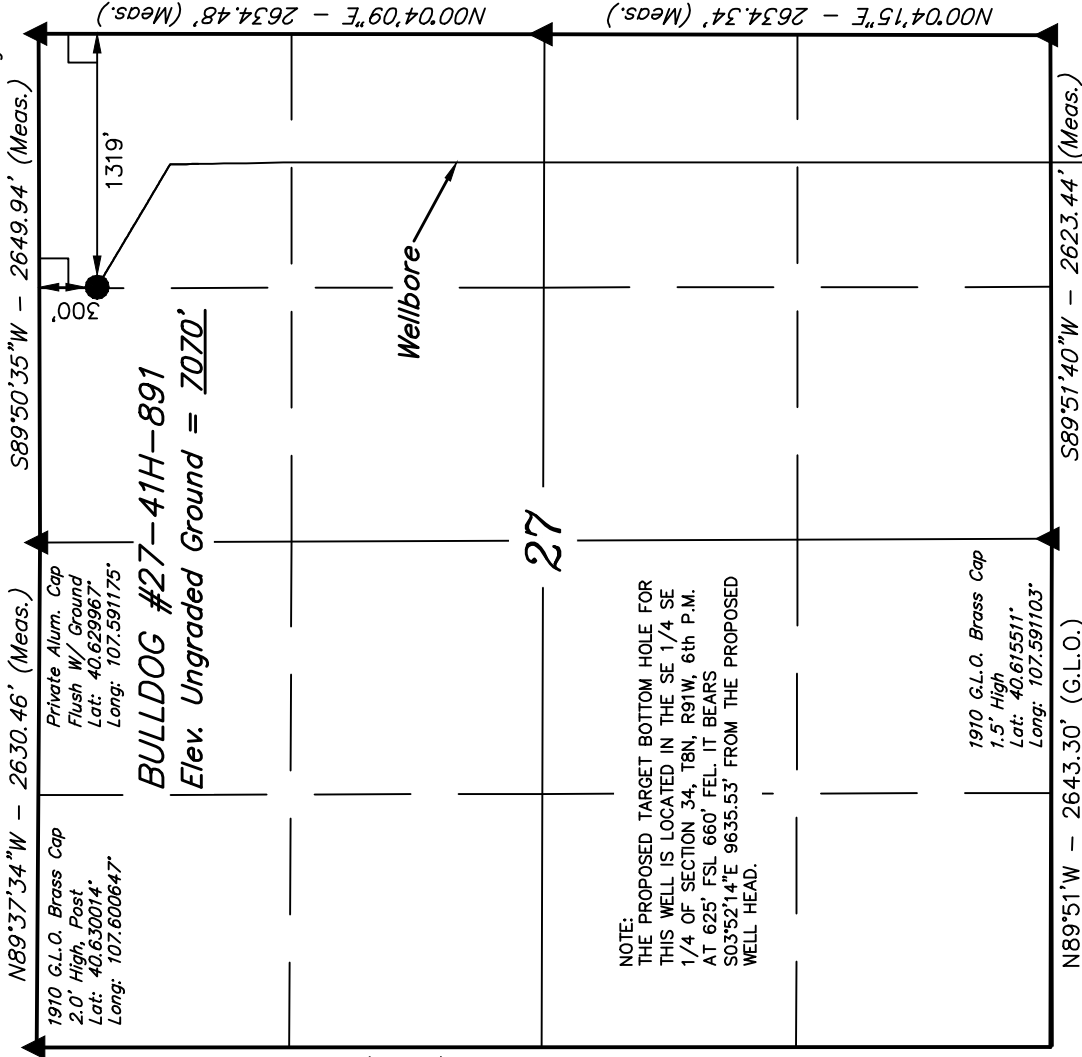
BASIS OF ELEVATION

SPOT ELEVATION LOCATED AT THE SOUTHWEST CORNER OF SECTION 15, T7N, R91W, 6th P.M. TAKEN FROM THE CRAIG QUADRANGLE, COLORADO, MOFFAT COUNTY, 7.5 MINUTE QUAD (TOPOGRAPHIC MAP) PUBLISHED BY THE UNITED STATES DEPARTMENT OF THE INTERIOR, GEOLOGICAL SURVEY. SAID ELEVATION IS MARKED AS BEING 6672 FEET.

BASIS OF BEARINGS

BASIS OF BEARINGS IS A G.P.S. OBSERVATION.

N00°02'W - 5258.88' (G.L.O.)



NOTE:  
THE PROPOSED TARGET BOTTOM HOLE FOR THIS WELL IS LOCATED IN THE SE 1/4 SE 1/4 OF SECTION 34, T8N, R91W, 6th P.M. AT 625' FSL 660' FEL. IT BEARS S03°52'14"E 9635.53' FROM THE PROPOSED WELL HEAD.

CERTIFICATE

THIS IS TO CERTIFY THAT THE ABOVE PLAT WAS PREPARED FROM FIELD NOTES OF ACTUAL SURVEYS MADE BY ME OR UNDER MY SUPERVISION AND THAT THE SAME ARE TRUE AND CORRECT TO THE BEST OF MY KNOWLEDGE AND BELIEF.

REGISTERED LAND SURVEYOR  
STATE OF COLORADO  
No. 171492  
Exp. 09-22-13

REVISED: 07-30-13 M.D.

UNTAH ENGINEERING & LAND SURVEYING  
85 SOUTH 200 EAST - VERNAL, UTAH 84078  
(435) 789-1017

NAD 83 (SURFACE LOCATION)
LATITUDE = 40°37'44.95" (40.629153)
LONGITUDE = 107°35'10.98" (107.586383)
NAD 27 (SURFACE LOCATION)
LATITUDE = 40°37'45.06" (40.629183)
LONGITUDE = 107°35'08.73" (107.585758)
STATE PLANE NAD 83
N: 1478855.14 E: 2420938.64
STATE PLANE NAD 27
N: 478853.81 E: 1421096.25

LEGEND:

- 90° SYMBOL
- PROPOSED WELL HEAD.
- SECTION CORNERS LOCATED.

T8N, R91W, 6th P.M.

Surface Location

AXIA ENERGY

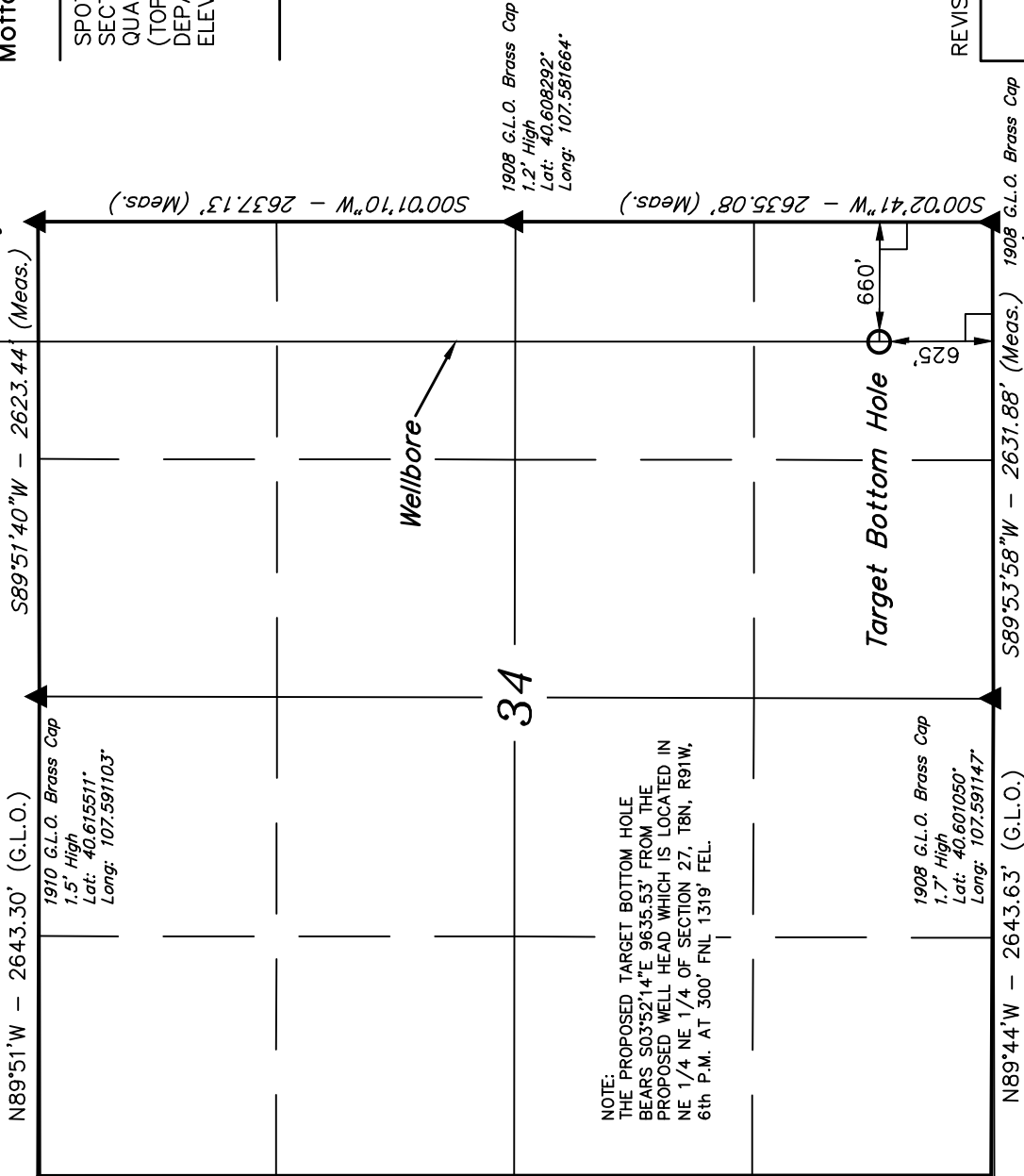
Well location, BULLDOG #27-41H-891 (TARGET BOTTOM HOLE), located as shown in the SE 1/4 SE 1/4 of Section 34, T8N, R91W, 6th P.M., Moffat County, Colorado.

BASIS OF ELEVATION

SPOT ELEVATION LOCATED AT THE SOUTHWEST CORNER OF SECTION 15, T7N, R91W, 6th P.M. TAKEN FROM THE CRAIG QUADRANGLE, COLORADO, MOFFAT COUNTY, 7.5 MINUTE QUAD (TOPOGRAPHIC MAP) PUBLISHED BY THE UNITED STATES DEPARTMENT OF THE INTERIOR, GEOLOGICAL SURVEY. SAID ELEVATION IS MARKED AS BEING 6672 FEET.

BASIS OF BEARINGS

BASIS OF BEARINGS IS A G.P.S. OBSERVATION.



N00°02'W - 5258.88' (G.L.O.)

NOTE:  
THE PROPOSED TARGET BOTTOM HOLE  
BEARS S03°52'14"E 9635.53' FROM THE  
PROPOSED WELL HEAD WHICH IS LOCATED IN  
NE 1/4 NE 1/4 OF SECTION 27, T8N, R91W,  
6th P.M. AT 300' FNL 1319' FEL.

Wellbore

Target Bottom Hole

LEGEND:

— = 90° SYMBOL

● = PROPOSED WELL HEAD.

▲ = SECTION CORNERS LOCATED.



CERTIFICATE

THIS IS TO CERTIFY THAT THE ABOVE PLAT WAS PREPARED FROM FIELD NOTES OF ACTUAL SURVEYS MADE BY ME OR UNDER MY SUPERVISION AND THAT THE SAME ARE TRUE AND CORRECT TO THE BEST OF MY KNOWLEDGE AND BELIEF.

REGISTERED LAND SURVEYOR  
STATE OF COLORADO  
REGISTRATION NO. 17492  
EXPIRATION DATE 09-22-13

REVISED: 07-30-13 M.D.

UTAH ENGINEERING & LAND SURVEYING  
85 SOUTH 200 EAST - VERNAL, UTAH 84078  
(435) 789-1017

SCALE	DATE SURVEYED:	DATE DRAWN:
1" = 1000'	01-11-13	01-16-13
PARTY	REFERENCES	
G.M. M.A. T.B.	G.L.O. PLAT	
WEATHER	FILE	
COLD	AXIA ENERGY	

NAD 83 (TARGET BOTTOM HOLE)
LATITUDE = 40°36'09.99" (40.602775)
LONGITUDE = 107°35'02.57" (107.584047)
NAD 27 (TARGET BOTTOM HOLE)
LATITUDE = 40°36'10.09" (40.602803)
LONGITUDE = 107°35'00.33" (107.583425)
STATE PLANE NAD 83
N: 1469232.13 E: 2421360.98
STATE PLANE NAD 27
N: 469230.86 E: 1421518.62