

T6N, R88W, 6th. P.M.

SWEPI LP

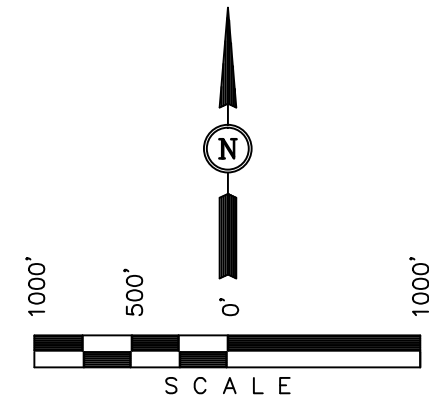
Well location, DILL GULCH #1-22, located as shown in the NW 1/4 SW 1/4 of Section 22, T6N, R88W, 6th. P.M., Routt County, Colorado.

BASIS OF ELEVATION

SPOT ELEVATION AT A ROAD INTERSECTION LOCATED IN THE SW 1/4 OF SECTION 20, T6N, R88W, 6th P.M., TAKEN FROM THE HAYDEN QUADRANGLE, COLORADO, 7.5 MINUTE SERIES (TOPOGRAPHICAL MAP) PUBLISHED BY THE UNITED STATES DEPARTMENT OF THE INTERIOR, GEOLOGICAL SURVEY. SAID ELEVATION IS MARKED AS BEING 6445 FEET.

BASIS OF BEARINGS

BASIS OF BEARINGS IS A G.P.S. OBSERVATION.



CERTIFICATE

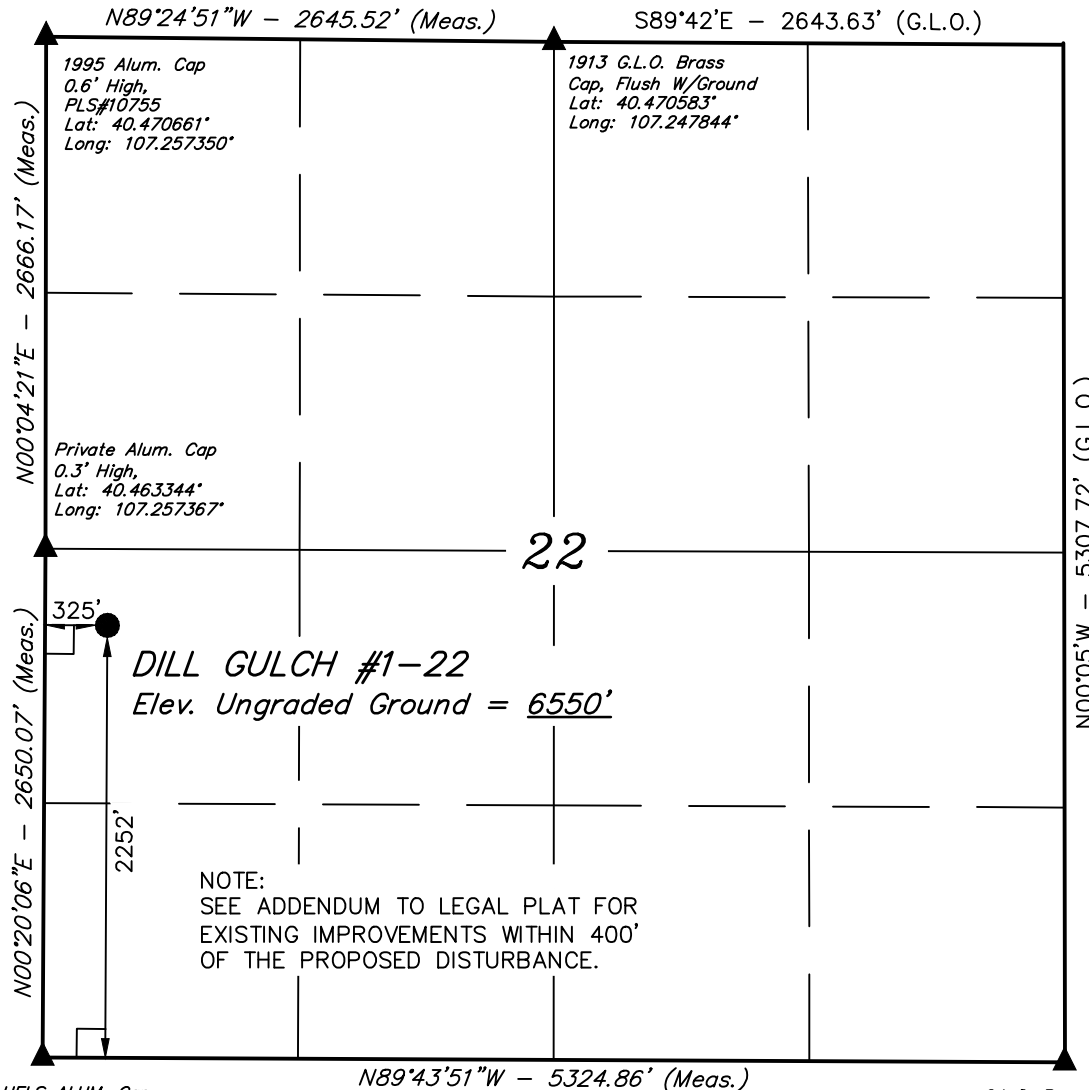
THIS IS TO CERTIFY THAT THE ABOVE PLAT WAS PREPARED FROM FIELD NOTES OF ACTUAL SURVEYS MADE BY ME OR UNDER MY SUPERVISION AND THAT THE SAME ARE TRUE AND CORRECT TO THE BEST OF MY KNOWLEDGE AND BELIEF.

REGISTERED LAND SURVEYOR
REGISTRATION NO. 17492
STATE OF COLORADO

REVISED: 05-30-13

UINTAH ENGINEERING & LAND SURVEYING
85 SOUTH 200 EAST - VERNAL, UTAH 84078
(435) 789-1017

SCALE 1" = 1000'	DATE SURVEYED: 09-05-12	DATE DRAWN: 09-13-12
PARTY G.M. B.S. M.D.	REFERENCES G.L.O. PLAT	
WEATHER WARM	FILE SWEPI LP	



2012 UELS ALUM. Cap
Flush W/Ground,
RLS #17492
Lat: 40.456072°
Long: 107.257425°

G.L.O. Brass Cap
Flush W/Ground
Lat: 40.455997°
Long: 107.238297°

LEGEND:

- └─┘ = 90° SYMBOL
- = PROPOSED WELL HEAD.
- ▲ = SECTION CORNERS LOCATED.

PDOP = 2.1

NAD 83 (SURFACE LOCATION)	
LATITUDE	= 40°27'44.09" (40.462247)
LONGITUDE	= 107°15'22.35" (107.256208)
NAD 27 (SURFACE LOCATION)	
LATITUDE	= 40°27'44.18" (40.462272)
LONGITUDE	= 107°15'20.14" (107.255594)