

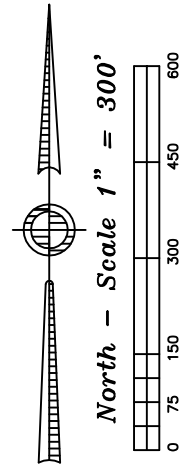
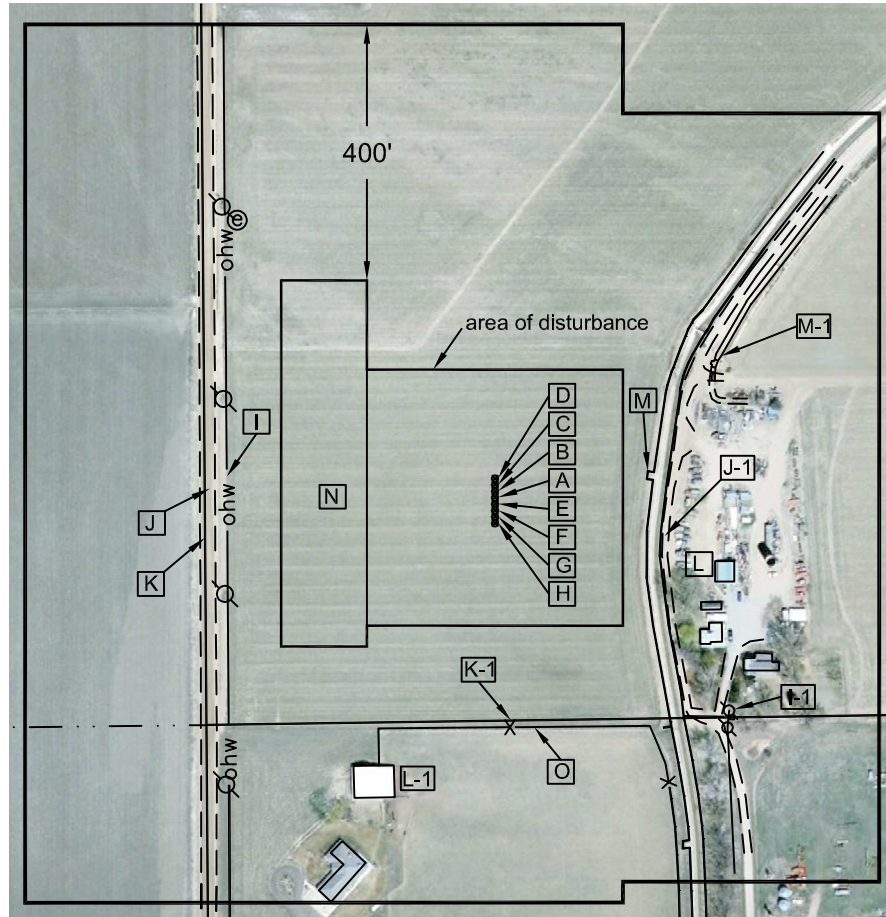
Nearest:
 Building 358' southeast
 Above Ground Utility: 419' west
 Public Road: 437' west
 Property Line: 350' south
 Railroad: 7,429' southeast

Location Drawing

Proposed Well Data:

Minch 0-4-4
 Latitude: N 40.25225°
 Longitude: W 105.01608°
 FSL: 1677'
 FWL: 453'
 ELEV: 5077'
 PDOP: 1.6

Field observations taken
 on 1/16/13 by operator
 John Rice.



Distances listed below are measured from the proposed Minch 0-4-4

- [A] proposed Minch 0-4-4
- [B] proposed Minch 4-4-4, 10' north
- [C] proposed Minch 2-4-4, 20' north
- [D] proposed Minch 13-4, 30' north
- [E] proposed Minch 23-4, 10' south
- [F] proposed Minch 0-5-4, 20' south
- [G] proposed Minch 0-6-4, 30' south
- [H] proposed Minch 4-6-4, 40' south
- [I] overhead power line 419' west
- [I-1] overhead power line 494' southeast
- [J] Weld County Road 5, 437' west
- [J-1] access 265' southeast
- [K] property line 453' west
- [K-1] property line 350' south
- [L] building 358' southeast
- [L-1] building 447' southwest
- [M] concrete ditch 239' northeast
- [M-1] ditch 395' northeast
- [N] proposed facility pads 200' west
- [O] fence 359' south

Legend:

- ⊗ - utility pole
- ⊙ - electric meter
- ohw— - overhead power line
- X— - fence line

Minch NSW Pad Location Drawing

Improvements extending
 400' from disturbance

Township 3 North, Range 68 West,
 Section 4: NW $\frac{1}{4}$ SW $\frac{1}{4}$
 Weld County, Colorado

July 18, 2013

JR Land Surveying, LLC

8114 Northstar Drive
 Windsor, Colorado 80528
 P. 970-576-4641