



July 26, 2013

Colorado Oil & Gas Conservation Commission  
The Chancery Building  
1120 Lincoln Street, Suite 801  
Denver, CO 80203

Attn: Mr. Matt Lepore, Director

RE: Minch 4-6-4  
Township 3N, Range 68W, 6th P.M.  
Section 4: 1,637' FSL 453' FWL (Surface Hole Location)  
Section 4: 1,380' FSL 2,611' FWL (Bottom Hole Location)  
Weld County

Mr. Lepore,

Encana Oil & Gas (USA) Inc. ("Encana") is planning to drill the captioned boundary well in accordance with the provisions of COGCC Rule 318A.e.

Proposed spacing unit configuration: E2SW4, W2SE4 Sec. 4 T3N, R68W  
Formation(s): J-Sand, Codell, Niobrara  
Spacing unit acreage: 160

Encana is the only working interest owner within the proposed spacing unit, therefore Encana hereby attests that no notice letters are required under COGCC Rule 318A.e.(6).

Enclosed is a copy of the map illustrating the proposed wellbore spacing unit to assist you in your review and approval of Encana's proposed APD for the captioned well.

Thank you for your time and attention to this matter. Encana respectfully requests that the COGCC review the enclosed information and approve the Application for Permit to Drill the captioned well.

Sincerely,

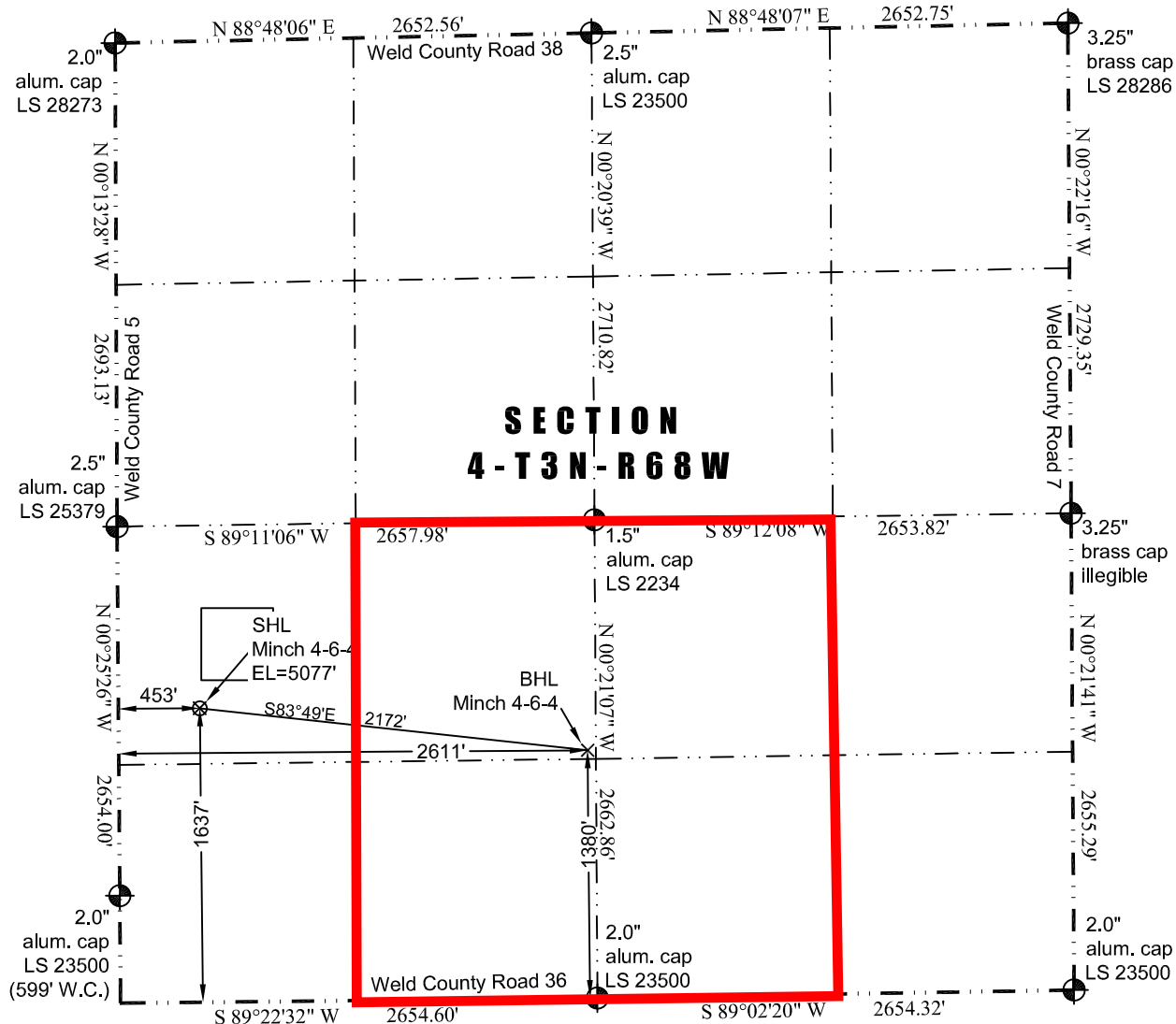
A handwritten signature in blue ink that reads "Chris McRickard".

Chris McRickard  
Permitting Analyst

JR Land Surveying, LLC  
8114 Northstar Drive  
Windsor, Colorado 80528  
P. 970-576-4641

## WELL LOCATION CERTIFICATE

*THIS MAP DOES NOT REPRESENT A BOUNDARY SURVEY*



Scale 1" = 1000'  
1000'  
approximate scale

LEGEND  
— found survey monument  
— calculated dimension  
(c)

In accordance with a request from Jay Knutson of EnCana Oil & Gas (USA) Inc., JR Land Surveying, LLC has determined the location of the **Minch 4-6-4** well site to be SHL: 1637' FSL and 453' FWL, (BHL: 1380' FSL and 2611' FWL), as measured at ninety (90) degrees from the section lines of Section 4, Township 3 North, Range 68 West of the 6th Principal Meridian, Weld County Colorado.

### Proposed Surface Hole Data:

Latitude: N 40.25214° (BHL: 40.25146°)  
Longitude: W 105.01608° (BHL: 105.00834°)  
PDOP: 2.2

### Nearest:

Building: 349' southeast	Above Ground Utility: 418' west
Public Road: 437' west	Railroad: 7,400' southeast
Property Line: 310' south	Well Window: SHL is 157' outside
Existing Well: E.L. Minch 14-4D, 1,784' southeast	

### Notes:

- 1) Bearings and distances based on NAD 83 Colorado North State Plane Coordinate. using RTK GPS observations taken 1/17/13 by operator John Rice.
- 2) Conversion factor to ground (1.0002813141).
- 3) Elevations based on NAVD 88 GPS heights and Geoid 2003 corrections.
- 4) See Location Drawing for visible improvements within 400 feet of Pad Site.
- 5) The surface use is a cultivated field.

**NOTICE:** According to Colorado law you must commence any legal action based upon any defect in this W.L.C. within three years after you first discover such defect. In no event may any action based upon any defect in this W.L.C. be commenced more than ten years from this said date of the certification shown hereon.

I hereby certify that this Well Location Certificate was prepared by me or under my direct supervision on 7/18/2013 for and on behalf of EnCana Oil & Gas (USA) Inc. That it is not a Land Survey Plat or an Improvement Survey Plat and that it is not to be relied upon for establishment of fences, buildings, or other future improvement lines.

John Robert McGehee LS#38219  
Well: Minch 4-6-4 W.L.C.