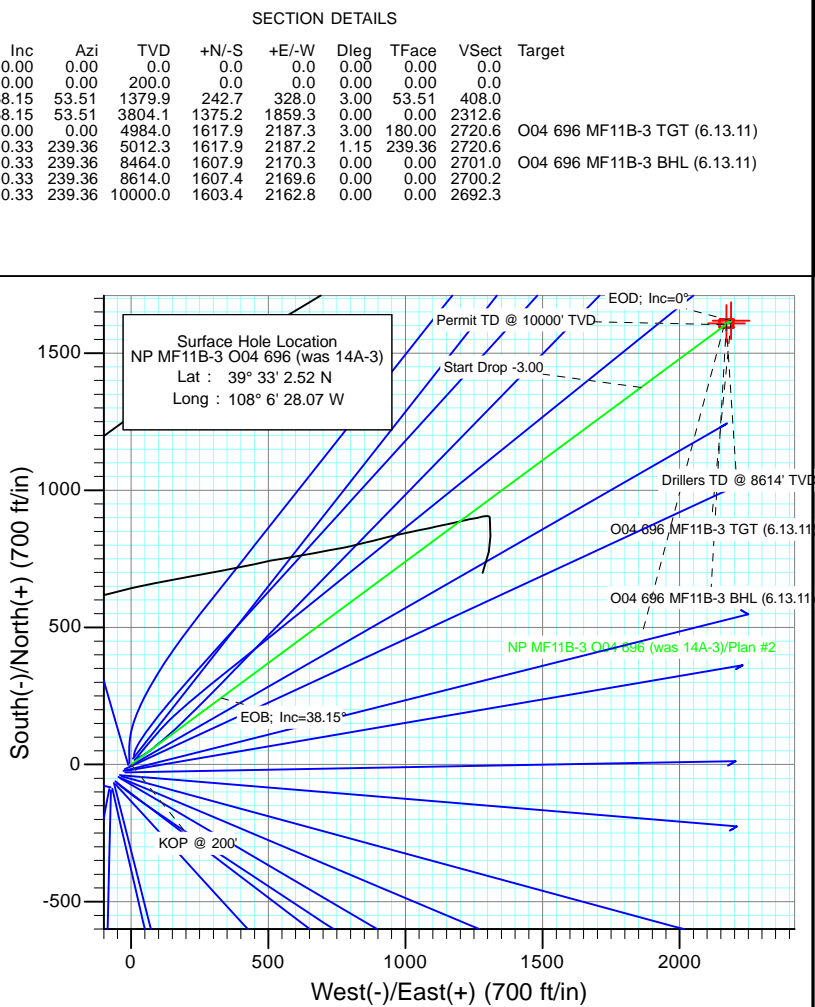
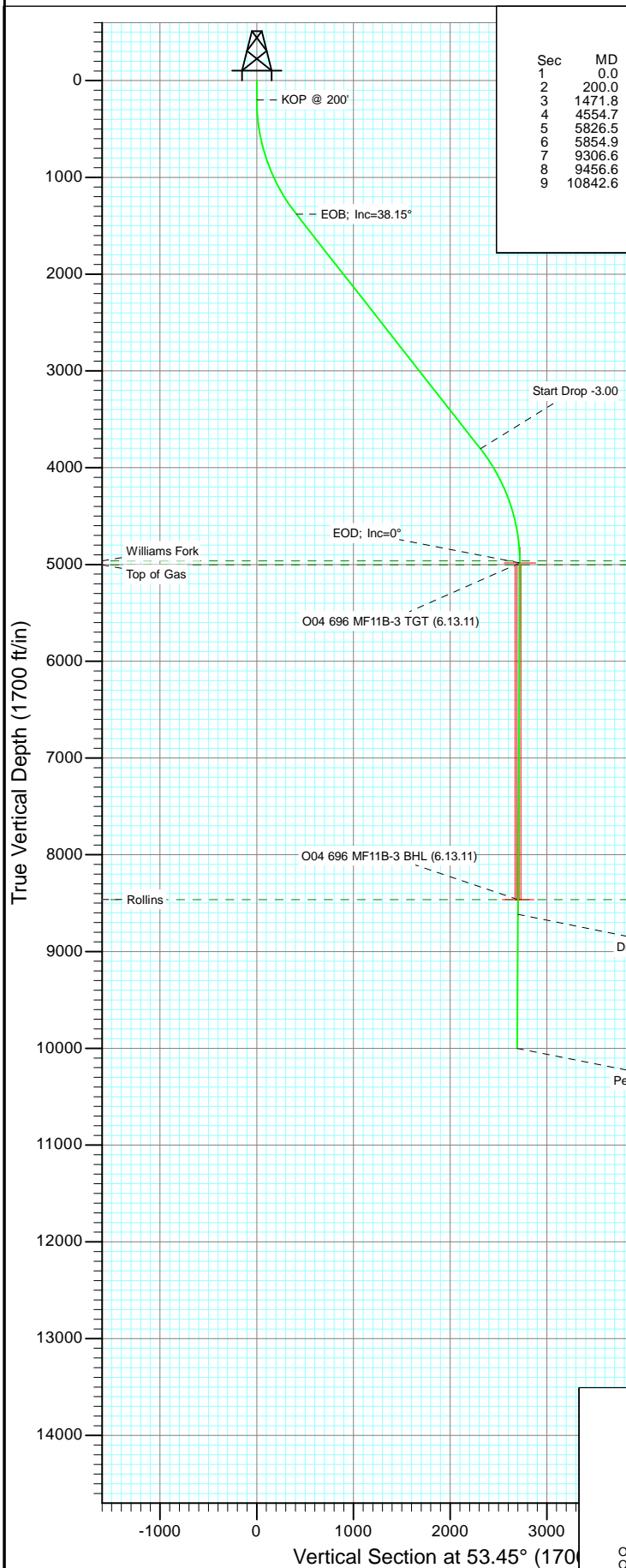




Project: North Piceance
Site: O04 696 (3rd)
Well: NP MF11B-3 O04 696 (was 14A-3)
Wellbore: DD
Design: Plan #2



Azimuths to True North
Magnetic North: 10.54°

Magnetic Field
Strength: 52365.1nT
Dip Angle: 65.79°
Date: 6/17/2010
Model: IGRF2010

FORMATION TOP DETAILS

TVDPath	MDPath	Formation
4964.0	5806.5	Williams Fork
5004.0	5846.5	Top of Gas
8464.0	9306.6	Rollins

Plan #2 NP MF11B-3 O04 696 (was 14A-3) 95xxx; LR WELL @ 6044.0ft (Original Well Elev) North American Datum 1983 Well NP MF11B-3 O04 696 (was 14A-3), True North							
Type TD	Target No Target (Freehand)	Azimuth 53.45	Origin Type Slot	N/S 0.0	E/W 0.0	From TVD 0.0	
Name	TVD	+N/-S	+E/-W	Latitude	Longitude		
O04 696 MF11B-3 TGT (6.13.11)	4984.0	1617.9	2187.3	39° 33' 18.51 N	108° 6' 0.14 W		
O04 696 MF11B-3 BHL (6.13.11)	8464.0	1607.9	2170.3	39° 33' 18.41 N	108° 6' 0.36 W		

Planning Report

Database:	USA EDM 5000 US Multi Users DB	Local Co-ordinate Reference:	Well NP MF11B-3 O04 696 (was 14A-3)
Company:	EnCana Oil & Gas (USA) Inc	TVD Reference:	WELL @ 6044.0ft (Original Well Elev)
Project:	North Piceance	MD Reference:	WELL @ 6044.0ft (Original Well Elev)
Site:	O04 696 (3rd)	North Reference:	True
Well:	NP MF11B-3 O04 696 (was 14A-3)	Survey Calculation Method:	Minimum Curvature
Wellbore:	DD		
Design:	Plan #2		

Project	North Piceance		
Map System:	US State Plane 1983	System Datum:	Mean Sea Level
Geo Datum:	North American Datum 1983		
Map Zone:	Colorado Central Zone		

Site	O04 696 (3rd)			
Site Position:		Northing:	1,635,941.08 ft	Latitude: 39° 33' 1.64 N
From:	Lat/Long	Easting:	2,264,673.43 ft	Longitude: 108° 6' 29.09 W
Position Uncertainty:	0.0 ft	Slot Radius:	13.200 in	Grid Convergence: -1.64 °

Well	NP MF11B-3 O04 696 (was 14A-3)			
Well Position	+N/-S	0.0 ft	Northing:	1,636,027.77 ft
	+E/-W	0.0 ft	Easting:	2,264,755.84 ft
Position Uncertainty		0.0 ft	Wellhead Elevation:	ft
			Ground Level:	6,022.0 ft

Wellbore	DD				
Magnetics	Model Name	Sample Date	Declination (°)	Dip Angle (°)	Field Strength (nT)
	IGRF2010	6/17/2010	10.54	65.79	52,365

Design	Plan #2			
Audit Notes:				
Version:	Phase:	PLAN	Tie On Depth:	0.0
Vertical Section:	Depth From (TVD) (ft)	+N/-S (ft)	+E/-W (ft)	Direction (°)
	0.0	0.0	0.0	53.45

Plan Sections										
Measured Depth (ft)	Inclination (°)	Azimuth (°)	Vertical Depth (ft)	+N/-S (ft)	+E/-W (ft)	Dogleg Rate (°/100ft)	Build Rate (°/100ft)	Turn Rate (°/100ft)	TFO (°)	Target
0.0	0.00	0.00	0.0	0.0	0.0	0.00	0.00	0.00	0.00	
200.0	0.00	0.00	200.0	0.0	0.0	0.00	0.00	0.00	0.00	
1,471.8	38.15	53.51	1,379.9	242.7	328.0	3.00	3.00	0.00	53.51	
4,554.7	38.15	53.51	3,804.1	1,375.2	1,859.3	0.00	0.00	0.00	0.00	
5,826.5	0.00	0.00	4,984.0	1,617.9	2,187.3	3.00	-3.00	0.00	180.00	O04 696 MF11B-3 TC
5,854.9	0.33	239.36	5,012.3	1,617.9	2,187.2	1.15	1.15	-425.73	239.36	
9,306.6	0.33	239.36	8,464.0	1,607.9	2,170.3	0.00	0.00	0.00	0.00	O04 696 MF11B-3 B-
9,456.6	0.33	239.36	8,614.0	1,607.4	2,169.6	0.00	0.00	0.00	0.00	
10,842.6	0.33	239.36	10,000.0	1,603.4	2,162.8	0.00	0.00	0.00	0.00	

Planning Report

Database: USA EDM 5000 US Multi Users DB
Company: EnCana Oil & Gas (USA) Inc
Project: North Piceance
Site: O04 696 (3rd)
Well: NP MF11B-3 O04 696 (was 14A-3)
Wellbore: DD
Design: Plan #2

Local Co-ordinate Reference: Well NP MF11B-3 O04 696 (was 14A-3)
TVD Reference: WELL @ 6044.0ft (Original Well Elev)
MD Reference: WELL @ 6044.0ft (Original Well Elev)
North Reference: True
Survey Calculation Method: Minimum Curvature

Planned Survey

Measured Depth (ft)	Inclination (°)	Azimuth (°)	Vertical Depth (ft)	+N/-S (ft)	+E/-W (ft)	Vertical Section (ft)	Dogleg Rate (°/100ft)	Build Rate (°/100ft)	Comments / Formations
0.0	0.00	0.00	0.0	0.0	0.0	0.0	0.00	0.00	
30.0	0.00	0.00	30.0	0.0	0.0	0.0	0.00	0.00	
60.0	0.00	0.00	60.0	0.0	0.0	0.0	0.00	0.00	
90.0	0.00	0.00	90.0	0.0	0.0	0.0	0.00	0.00	
120.0	0.00	0.00	120.0	0.0	0.0	0.0	0.00	0.00	
150.0	0.00	0.00	150.0	0.0	0.0	0.0	0.00	0.00	
180.0	0.00	0.00	180.0	0.0	0.0	0.0	0.00	0.00	
200.0	0.00	0.00	200.0	0.0	0.0	0.0	0.00	0.00	KOP @ 200'
210.0	0.30	53.51	210.0	0.0	0.0	0.0	3.00	3.00	
240.0	1.20	53.51	240.0	0.2	0.3	0.4	3.00	3.00	
270.0	2.10	53.51	270.0	0.8	1.0	1.3	3.00	3.00	
300.0	3.00	53.51	300.0	1.6	2.1	2.6	3.00	3.00	
330.0	3.90	53.51	329.9	2.6	3.6	4.4	3.00	3.00	
360.0	4.80	53.51	359.8	4.0	5.4	6.7	3.00	3.00	
390.0	5.70	53.51	389.7	5.6	7.6	9.4	3.00	3.00	
420.0	6.60	53.51	419.5	7.5	10.2	12.7	3.00	3.00	
450.0	7.50	53.51	449.3	9.7	13.1	16.3	3.00	3.00	
480.0	8.40	53.51	479.0	12.2	16.5	20.5	3.00	3.00	
510.0	9.30	53.51	508.6	14.9	20.2	25.1	3.00	3.00	
540.0	10.20	53.51	538.2	17.9	24.3	30.2	3.00	3.00	
570.0	11.10	53.51	567.7	21.2	28.7	35.7	3.00	3.00	
600.0	12.00	53.51	597.1	24.8	33.6	41.7	3.00	3.00	
630.0	12.90	53.51	626.4	28.7	38.8	48.2	3.00	3.00	
660.0	13.80	53.51	655.6	32.8	44.3	55.1	3.00	3.00	
690.0	14.70	53.51	684.6	37.2	50.3	62.5	3.00	3.00	
720.0	15.60	53.51	713.6	41.8	56.6	70.4	3.00	3.00	
750.0	16.50	53.51	742.4	46.8	63.2	78.6	3.00	3.00	
780.0	17.40	53.51	771.1	52.0	70.3	87.4	3.00	3.00	
810.0	18.30	53.51	799.7	57.4	77.7	96.6	3.00	3.00	
840.0	19.20	53.51	828.1	63.2	85.4	106.2	3.00	3.00	
870.0	20.10	53.51	856.3	69.2	93.5	116.3	3.00	3.00	
900.0	21.00	53.51	884.4	75.4	102.0	126.9	3.00	3.00	
930.0	21.90	53.51	912.4	82.0	110.8	137.8	3.00	3.00	
960.0	22.80	53.51	940.1	88.7	120.0	149.2	3.00	3.00	
990.0	23.70	53.51	967.7	95.8	129.5	161.1	3.00	3.00	
1,020.0	24.60	53.51	995.0	103.1	139.4	173.3	3.00	3.00	
1,050.0	25.50	53.51	1,022.2	110.6	149.6	186.0	3.00	3.00	
1,080.0	26.40	53.51	1,049.2	118.4	160.1	199.2	3.00	3.00	
1,110.0	27.30	53.51	1,076.0	126.5	171.0	212.7	3.00	3.00	
1,140.0	28.20	53.51	1,102.5	134.8	182.3	226.7	3.00	3.00	
1,170.0	29.10	53.51	1,128.8	143.4	193.8	241.1	3.00	3.00	
1,200.0	30.00	53.51	1,154.9	152.2	205.7	255.9	3.00	3.00	
1,230.0	30.90	53.51	1,180.8	161.2	217.9	271.1	3.00	3.00	
1,260.0	31.80	53.51	1,206.4	170.5	230.5	286.7	3.00	3.00	
1,290.0	32.70	53.51	1,231.8	180.0	243.4	302.7	3.00	3.00	
1,320.0	33.60	53.51	1,256.9	189.8	256.5	319.1	3.00	3.00	
1,350.0	34.50	53.51	1,281.8	199.7	270.0	335.9	3.00	3.00	
1,380.0	35.40	53.51	1,306.3	210.0	283.9	353.1	3.00	3.00	
1,410.0	36.30	53.51	1,330.7	220.4	298.0	370.6	3.00	3.00	
1,440.0	37.20	53.51	1,354.7	231.1	312.4	388.6	3.00	3.00	
1,470.0	38.10	53.51	1,378.5	242.0	327.2	406.9	3.00	3.00	
1,471.8	38.15	53.51	1,379.9	242.7	328.0	408.0	3.00	3.00	EOB; Inc=38.15°

Planning Report

Database:	USA EDM 5000 US Multi Users DB	Local Co-ordinate Reference:	Well NP MF11B-3 O04 696 (was 14A-3)
Company:	EnCana Oil & Gas (USA) Inc	TVD Reference:	WELL @ 6044.0ft (Original Well Elev)
Project:	North Piceance	MD Reference:	WELL @ 6044.0ft (Original Well Elev)
Site:	O04 696 (3rd)	North Reference:	True
Well:	NP MF11B-3 O04 696 (was 14A-3)	Survey Calculation Method:	Minimum Curvature
Wellbore:	DD		
Design:	Plan #2		

Planned Survey

Measured Depth (ft)	Inclination (°)	Azimuth (°)	Vertical Depth (ft)	+N/-S (ft)	+E/-W (ft)	Vertical Section (ft)	Dogleg Rate (°/100ft)	Build Rate (°/100ft)	Comments / Formations
1,500.0	38.15	53.51	1,402.0	253.0	342.1	425.5	0.00	0.00	
1,530.0	38.15	53.51	1,425.6	264.0	357.0	444.0	0.00	0.00	
1,560.0	38.15	53.51	1,449.2	275.1	371.9	462.5	0.00	0.00	
1,590.0	38.15	53.51	1,472.8	286.1	386.8	481.1	0.00	0.00	
1,620.0	38.15	53.51	1,496.4	297.1	401.7	499.6	0.00	0.00	
1,650.0	38.15	53.51	1,520.0	308.1	416.6	518.1	0.00	0.00	
1,680.0	38.15	53.51	1,543.6	319.1	431.5	536.7	0.00	0.00	
1,710.0	38.15	53.51	1,567.2	330.2	446.4	555.2	0.00	0.00	
1,740.0	38.15	53.51	1,590.8	341.2	461.3	573.7	0.00	0.00	
1,770.0	38.15	53.51	1,614.4	352.2	476.2	592.3	0.00	0.00	
1,800.0	38.15	53.51	1,637.9	363.2	491.1	610.8	0.00	0.00	
1,830.0	38.15	53.51	1,661.5	374.2	506.0	629.3	0.00	0.00	
1,860.0	38.15	53.51	1,685.1	385.3	520.9	647.9	0.00	0.00	
1,890.0	38.15	53.51	1,708.7	396.3	535.8	666.4	0.00	0.00	
1,920.0	38.15	53.51	1,732.3	407.3	550.7	684.9	0.00	0.00	
1,950.0	38.15	53.51	1,755.9	418.3	565.6	703.5	0.00	0.00	
1,980.0	38.15	53.51	1,779.5	429.4	580.5	722.0	0.00	0.00	
2,010.0	38.15	53.51	1,803.1	440.4	595.4	740.5	0.00	0.00	
2,040.0	38.15	53.51	1,826.7	451.4	610.3	759.1	0.00	0.00	
2,070.0	38.15	53.51	1,850.3	462.4	625.2	777.6	0.00	0.00	
2,100.0	38.15	53.51	1,873.9	473.4	640.1	796.1	0.00	0.00	
2,130.0	38.15	53.51	1,897.4	484.5	655.0	814.7	0.00	0.00	
2,160.0	38.15	53.51	1,921.0	495.5	669.9	833.2	0.00	0.00	
2,190.0	38.15	53.51	1,944.6	506.5	684.8	851.7	0.00	0.00	
2,220.0	38.15	53.51	1,968.2	517.5	699.7	870.3	0.00	0.00	
2,250.0	38.15	53.51	1,991.8	528.5	714.6	888.8	0.00	0.00	
2,280.0	38.15	53.51	2,015.4	539.6	729.5	907.3	0.00	0.00	
2,310.0	38.15	53.51	2,039.0	550.6	744.4	925.9	0.00	0.00	
2,340.0	38.15	53.51	2,062.6	561.6	759.3	944.4	0.00	0.00	
2,370.0	38.15	53.51	2,086.2	572.6	774.2	962.9	0.00	0.00	
2,400.0	38.15	53.51	2,109.8	583.6	789.1	981.5	0.00	0.00	
2,430.0	38.15	53.51	2,133.3	594.7	804.0	1,000.0	0.00	0.00	
2,460.0	38.15	53.51	2,156.9	605.7	818.9	1,018.5	0.00	0.00	
2,490.0	38.15	53.51	2,180.5	616.7	833.8	1,037.1	0.00	0.00	

Targets

Target Name	Dip Angle (°)	Dip Dir. (°)	TVD (ft)	+N/-S (ft)	+E/-W (ft)	Northing (ft)	Easting (ft)	Latitude	Longitude
- hit/miss target									
- Shape									
O04 696 MF11B-3 TGT	0.00	0.00	4,984.0	1,617.9	2,187.3	1,637,582.23	2,266,988.68	39° 33' 18.51 N	108° 6' 0.14 W
- plan misses target center by 3270.2ft at 2490.0ft MD (2180.5 TVD, 616.7 N, 833.8 E)									
- Point									
O04 696 MF11B-3 BHL	0.00	0.00	8,464.0	1,607.9	2,170.3	1,637,572.67	2,266,971.44	39° 33' 18.41 N	108° 6' 0.36 W
- plan misses target center by 6500.1ft at 2490.0ft MD (2180.5 TVD, 616.7 N, 833.8 E)									
- Rectangle (sides W30.0 H50.0 D0.0)									

Planning Report

Database: USA EDM 5000 US Multi Users DB
Company: EnCana Oil & Gas (USA) Inc
Project: North Piceance
Site: O04 696 (3rd)
Well: NP MF11B-3 O04 696 (was 14A-3)
Wellbore: DD
Design: Plan #2

Local Co-ordinate Reference: Well NP MF11B-3 O04 696 (was 14A-3)
TVD Reference: WELL @ 6044.0ft (Original Well Elev)
MD Reference: WELL @ 6044.0ft (Original Well Elev)
North Reference: True
Survey Calculation Method: Minimum Curvature

Planned Survey

Measured Depth (ft)	Inclination (°)	Azimuth (°)	Vertical Depth (ft)	+N/-S (ft)	+E/-W (ft)	Vertical Section (ft)	Dogleg Rate (°/100ft)	Build Rate (°/100ft)	Comments / Formations
2,500.0	38.15	53.51	2,188.4	620.4	838.7	1,043.2	0.00	0.00	
2,600.0	38.15	53.51	2,267.0	657.1	888.4	1,105.0	0.00	0.00	
2,700.0	38.15	53.51	2,345.7	693.9	938.1	1,166.8	0.00	0.00	
2,800.0	38.15	53.51	2,424.3	730.6	987.7	1,228.6	0.00	0.00	
2,900.0	38.15	53.51	2,502.9	767.3	1,037.4	1,290.3	0.00	0.00	
3,000.0	38.15	53.51	2,581.6	804.1	1,087.1	1,352.1	0.00	0.00	
3,100.0	38.15	53.51	2,660.2	840.8	1,136.7	1,413.9	0.00	0.00	
3,200.0	38.15	53.51	2,738.8	877.6	1,186.4	1,475.7	0.00	0.00	
3,300.0	38.15	53.51	2,817.5	914.3	1,236.1	1,537.5	0.00	0.00	
3,400.0	38.15	53.51	2,896.1	951.0	1,285.7	1,599.2	0.00	0.00	
3,500.0	38.15	53.51	2,974.7	987.8	1,335.4	1,661.0	0.00	0.00	
3,600.0	38.15	53.51	3,053.4	1,024.5	1,385.1	1,722.8	0.00	0.00	
3,700.0	38.15	53.51	3,132.0	1,061.2	1,434.7	1,784.6	0.00	0.00	
3,800.0	38.15	53.51	3,210.7	1,098.0	1,484.4	1,846.3	0.00	0.00	
3,900.0	38.15	53.51	3,289.3	1,134.7	1,534.1	1,908.1	0.00	0.00	
4,000.0	38.15	53.51	3,367.9	1,171.5	1,583.7	1,969.9	0.00	0.00	
4,100.0	38.15	53.51	3,446.6	1,208.2	1,633.4	2,031.7	0.00	0.00	
4,200.0	38.15	53.51	3,525.2	1,244.9	1,683.1	2,093.5	0.00	0.00	
4,300.0	38.15	53.51	3,603.8	1,281.7	1,732.7	2,155.2	0.00	0.00	
4,400.0	38.15	53.51	3,682.5	1,318.4	1,782.4	2,217.0	0.00	0.00	
4,500.0	38.15	53.51	3,761.1	1,355.1	1,832.1	2,278.8	0.00	0.00	
4,554.7	38.15	53.51	3,804.1	1,375.2	1,859.3	2,312.6	0.00	0.00	Start Drop -3.00
4,600.0	36.80	53.51	3,840.1	1,391.6	1,881.4	2,340.1	3.00	-3.00	
4,700.0	33.80	53.51	3,921.7	1,426.0	1,927.8	2,397.9	3.00	-3.00	
4,800.0	30.80	53.51	4,006.2	1,457.8	1,970.8	2,451.3	3.00	-3.00	
4,900.0	27.80	53.51	4,093.4	1,486.9	2,010.1	2,500.3	3.00	-3.00	
5,000.0	24.80	53.51	4,183.0	1,513.2	2,045.7	2,544.6	3.00	-3.00	
5,100.0	21.80	53.51	4,274.9	1,536.7	2,077.5	2,584.1	3.00	-3.00	
5,200.0	18.80	53.51	4,368.6	1,557.3	2,105.4	2,618.8	3.00	-3.00	
5,300.0	15.80	53.51	4,464.1	1,575.0	2,129.3	2,648.5	3.00	-3.00	
5,400.0	12.80	53.51	4,561.0	1,589.7	2,149.2	2,673.2	3.00	-3.00	
5,500.0	9.80	53.51	4,659.1	1,601.3	2,164.9	2,692.8	3.00	-3.00	
5,600.0	6.80	53.51	4,758.0	1,609.9	2,176.5	2,707.2	3.00	-3.00	
5,700.0	3.80	53.51	4,857.6	1,615.4	2,183.9	2,716.4	3.00	-3.00	
5,800.0	0.80	53.51	4,957.5	1,617.8	2,187.2	2,720.5	3.00	-3.00	
5,806.5	0.60	53.51	4,964.0	1,617.8	2,187.2	2,720.5	3.00	-3.00	Williams Fork
5,826.5	0.00	0.00	4,984.0	1,617.9	2,187.3	2,720.6	3.00	-3.00	EOD; Inc=0° - O04 696 MF11B-3 TGT (6.13.11)
5,846.5	0.23	239.36	5,004.0	1,617.9	2,187.3	2,720.6	1.15	1.15	Top of Gas
5,854.9	0.33	239.36	5,012.3	1,617.9	2,187.2	2,720.6	1.15	1.15	
5,900.0	0.33	239.36	5,057.5	1,617.7	2,187.0	2,720.3	0.00	0.00	
6,000.0	0.33	239.36	5,157.5	1,617.4	2,186.5	2,719.7	0.00	0.00	
6,100.0	0.33	239.36	5,257.5	1,617.1	2,186.0	2,719.2	0.00	0.00	
6,200.0	0.33	239.36	5,357.5	1,616.9	2,185.5	2,718.6	0.00	0.00	
6,300.0	0.33	239.36	5,457.5	1,616.6	2,185.1	2,718.0	0.00	0.00	
6,400.0	0.33	239.36	5,557.5	1,616.3	2,184.6	2,717.5	0.00	0.00	
6,500.0	0.33	239.36	5,657.5	1,616.0	2,184.1	2,716.9	0.00	0.00	
6,600.0	0.33	239.36	5,757.5	1,615.7	2,183.6	2,716.3	0.00	0.00	
6,700.0	0.33	239.36	5,857.5	1,615.4	2,183.1	2,715.8	0.00	0.00	
6,800.0	0.33	239.36	5,957.5	1,615.1	2,182.6	2,715.2	0.00	0.00	
6,900.0	0.33	239.36	6,057.5	1,614.8	2,182.1	2,714.6	0.00	0.00	
7,000.0	0.33	239.36	6,157.5	1,614.5	2,181.6	2,714.1	0.00	0.00	
7,100.0	0.33	239.36	6,257.5	1,614.2	2,181.1	2,713.5	0.00	0.00	

Planning Report

Database:	USA EDM 5000 US Multi Users DB	Local Co-ordinate Reference:	Well NP MF11B-3 O04 696 (was 14A-3)
Company:	EnCana Oil & Gas (USA) Inc	TVD Reference:	WELL @ 6044.0ft (Original Well Elev)
Project:	North Piceance	MD Reference:	WELL @ 6044.0ft (Original Well Elev)
Site:	O04 696 (3rd)	North Reference:	True
Well:	NP MF11B-3 O04 696 (was 14A-3)	Survey Calculation Method:	Minimum Curvature
Wellbore:	DD		
Design:	Plan #2		

Planned Survey									
Measured Depth (ft)	Inclination (°)	Azimuth (°)	Vertical Depth (ft)	+N/-S (ft)	+E/-W (ft)	Vertical Section (ft)	Dogleg Rate (°/100ft)	Build Rate (°/100ft)	Comments / Formations
7,200.0	0.33	239.36	6,357.5	1,614.0	2,180.6	2,712.9	0.00	0.00	
7,300.0	0.33	239.36	6,457.4	1,613.7	2,180.2	2,712.4	0.00	0.00	
7,400.0	0.33	239.36	6,557.4	1,613.4	2,179.7	2,711.8	0.00	0.00	
7,500.0	0.33	239.36	6,657.4	1,613.1	2,179.2	2,711.3	0.00	0.00	
7,600.0	0.33	239.36	6,757.4	1,612.8	2,178.7	2,710.7	0.00	0.00	
7,700.0	0.33	239.36	6,857.4	1,612.5	2,178.2	2,710.1	0.00	0.00	
7,800.0	0.33	239.36	6,957.4	1,612.2	2,177.7	2,709.6	0.00	0.00	
7,900.0	0.33	239.36	7,057.4	1,611.9	2,177.2	2,709.0	0.00	0.00	
8,000.0	0.33	239.36	7,157.4	1,611.6	2,176.7	2,708.4	0.00	0.00	
8,100.0	0.33	239.36	7,257.4	1,611.4	2,176.2	2,707.9	0.00	0.00	
8,200.0	0.33	239.36	7,357.4	1,611.1	2,175.8	2,707.3	0.00	0.00	
8,300.0	0.33	239.36	7,457.4	1,610.8	2,175.3	2,706.7	0.00	0.00	
8,400.0	0.33	239.36	7,557.4	1,610.5	2,174.8	2,706.2	0.00	0.00	
8,500.0	0.33	239.36	7,657.4	1,610.2	2,174.3	2,705.6	0.00	0.00	
8,600.0	0.33	239.36	7,757.4	1,609.9	2,173.8	2,705.0	0.00	0.00	
8,700.0	0.33	239.36	7,857.4	1,609.6	2,173.3	2,704.5	0.00	0.00	
8,800.0	0.33	239.36	7,957.4	1,609.3	2,172.8	2,703.9	0.00	0.00	
8,900.0	0.33	239.36	8,057.4	1,609.0	2,172.3	2,703.3	0.00	0.00	
9,000.0	0.33	239.36	8,157.4	1,608.7	2,171.8	2,702.8	0.00	0.00	
9,100.0	0.33	239.36	8,257.4	1,608.5	2,171.4	2,702.2	0.00	0.00	
9,200.0	0.33	239.36	8,357.4	1,608.2	2,170.9	2,701.6	0.00	0.00	
9,300.0	0.33	239.36	8,457.4	1,607.9	2,170.4	2,701.1	0.00	0.00	
9,306.6	0.33	239.36	8,464.0	1,607.9	2,170.3	2,701.0	0.00	0.00	Rollins - O04 696 MF11B-3 BHL (6.13.11)
9,400.0	0.33	239.36	8,557.4	1,607.6	2,169.9	2,700.5	0.00	0.00	
9,456.6	0.33	239.36	8,614.0	1,607.4	2,169.6	2,700.2	0.00	0.00	Drillers TD @ 8614' TVD
9,500.0	0.33	239.36	8,657.4	1,607.3	2,169.4	2,699.9	0.00	0.00	
9,600.0	0.33	239.36	8,757.4	1,607.0	2,168.9	2,699.4	0.00	0.00	
9,700.0	0.33	239.36	8,857.4	1,606.7	2,168.4	2,698.8	0.00	0.00	
9,800.0	0.33	239.36	8,957.4	1,606.4	2,167.9	2,698.2	0.00	0.00	
9,900.0	0.33	239.36	9,057.4	1,606.1	2,167.4	2,697.7	0.00	0.00	
10,000.0	0.33	239.36	9,157.4	1,605.8	2,166.9	2,697.1	0.00	0.00	
10,100.0	0.33	239.36	9,257.4	1,605.6	2,166.5	2,696.5	0.00	0.00	
10,200.0	0.33	239.36	9,357.4	1,605.3	2,166.0	2,696.0	0.00	0.00	
10,300.0	0.33	239.36	9,457.4	1,605.0	2,165.5	2,695.4	0.00	0.00	
10,400.0	0.33	239.36	9,557.4	1,604.7	2,165.0	2,694.8	0.00	0.00	
10,500.0	0.33	239.36	9,657.4	1,604.4	2,164.5	2,694.3	0.00	0.00	
10,600.0	0.33	239.36	9,757.4	1,604.1	2,164.0	2,693.7	0.00	0.00	
10,700.0	0.33	239.36	9,857.4	1,603.8	2,163.5	2,693.1	0.00	0.00	
10,800.0	0.33	239.36	9,957.4	1,603.5	2,163.0	2,692.6	0.00	0.00	
10,842.6	0.33	239.36	10,000.0	1,603.4	2,162.8	2,692.3	0.00	0.00	Permit TD @ 10000' TVD

Planning Report

Database:	USA EDM 5000 US Multi Users DB	Local Co-ordinate Reference:	Well NP MF11B-3 O04 696 (was 14A-3)
Company:	EnCana Oil & Gas (USA) Inc	TVD Reference:	WELL @ 6044.0ft (Original Well Elev)
Project:	North Piceance	MD Reference:	WELL @ 6044.0ft (Original Well Elev)
Site:	O04 696 (3rd)	North Reference:	True
Well:	NP MF11B-3 O04 696 (was 14A-3)	Survey Calculation Method:	Minimum Curvature
Wellbore:	DD		
Design:	Plan #2		

Targets									
Target Name	Dip Angle	Dip Dir.	TVD	+N/-S	+E/-W	Northing	Easting	Latitude	Longitude
- hit/miss target	(°)	(°)	(ft)	(ft)	(ft)	(ft)	(ft)		
- Shape									
O04 696 MF11B-3 TGT - plan hits target center - Point	0.00	0.00	4,984.0	1,617.9	2,187.3	1,637,582.23	2,266,988.68	39° 33' 18.51 N	108° 6' 0.14 W
O04 696 MF11B-3 BHL - plan hits target center - Rectangle (sides W30.0 H50.0 D0.0)	0.00	0.00	8,464.0	1,607.9	2,170.3	1,637,572.67	2,266,971.44	39° 33' 18.41 N	108° 6' 0.36 W

Formations					
Measured Depth	Vertical Depth	Name	Lithology	Dip	Dip Direction
(ft)	(ft)			(°)	(°)
5,806.5	4,964.0	Williams Fork		0.00	
5,846.5	5,004.0	Top of Gas		0.00	
9,306.6	8,464.0	Rollins		0.00	

Plan Annotations				
Measured Depth	Vertical Depth	Local Coordinates		Comment
(ft)	(ft)	+N/-S (ft)	+E/-W (ft)	
200.0	200.0	0.0	0.0	KOP @ 200'
1,471.8	1,379.9	242.7	328.0	EOB; Inc=38.15°
4,554.7	3,804.1	1,375.2	1,859.3	Start Drop -3.00
5,826.5	4,984.0	1,617.9	2,187.3	EOD; Inc=0°
9,456.6	8,614.0	1,617.9	2,187.2	Drillers TD @ 8614' TVD
10,842.6	10,000.0	1,607.9	2,170.3	Permit TD @ 10000' TVD

EnCana Oil & Gas (USA) Inc

North Piceance

O04 696 (3rd)

NP MF11B-3 O04 696 (was 14A-3)

DD

Plan #2

Anticollision Report

14 June, 2011

Anticollision Report

Company:	EnCana Oil & Gas (USA) Inc	Local Co-ordinate Reference:	Well NP MF11B-3 O04 696 (was 14A-3)
Project:	North Piceance	TVD Reference:	WELL @ 6044.0ft (Original Well Elev)
Reference Site:	O04 696 (3rd)	MD Reference:	WELL @ 6044.0ft (Original Well Elev)
Site Error:	0.0ft	North Reference:	True
Reference Well:	NP MF11B-3 O04 696 (was 14A-3)	Survey Calculation Method:	Minimum Curvature
Well Error:	0.0ft	Output errors are at	2.00 sigma
Reference Wellbore	DD	Database:	EDM 5000.1 US Multi Users DB
Reference Design:	Plan #2	Offset TVD Reference:	Offset Datum

Reference	Plan #2		
Filter type:	NO GLOBAL FILTER: Using user defined selection & filtering criteria		
Interpolation Method:	MD Interval 100.0ft	Error Model:	Systematic Ellipse
Depth Range:	Unlimited	Scan Method:	Closest Approach 3D
Results Limited by:	Maximum center-center distance of 100.0ft	Error Surface:	Elliptical Conic
Warning Levels Evaluated at:	2.00 Sigma		

Survey Tool Program		Date	6/14/2011		
From (ft)	To (ft)	Survey (Wellbore)	Tool Name	Description	
0.0	10,842.6	Plan #2 (DD)	MWD	Geolink MWD	

Anticollision Report

Company:	EnCana Oil & Gas (USA) Inc	Local Co-ordinate Reference:	Well NP MF11B-3 O04 696 (was 14A-3)
Project:	North Piceance	TVD Reference:	WELL @ 6044.0ft (Original Well Elev)
Reference Site:	O04 696 (3rd)	MD Reference:	WELL @ 6044.0ft (Original Well Elev)
Site Error:	0.0ft	North Reference:	True
Reference Well:	NP MF11B-3 O04 696 (was 14A-3)	Survey Calculation Method:	Minimum Curvature
Well Error:	0.0ft	Output errors are at	2.00 sigma
Reference Wellbore	DD	Database:	EDM 5000.1 US Multi Users DB
Reference Design:	Plan #2	Offset TVD Reference:	Offset Datum

Summary

Site Name	Reference Measured Depth (ft)	Offset Measured Depth (ft)	Distance Between Centres (ft)	Between Ellipses (ft)	Separation Factor	Warning
Offset Well - Wellbore - Design						
N04 696 Pad (NESW Sec4-T6S-R96W)						
NP MF09A N04 696 - DD - DD						Out of range
NP MF09A N04 696 - DD - Plan #3						Out of range
NP MF09A N04 696 - DD - Plan #4						Out of range
NP MF16A N04 696 - DD - DD						Out of range
NP MF16A N04 696 - DD - Plan #1						Out of range
NP MF16A N04 696 - DD - Plan#2						Out of range
O04 696 (3rd)						
NP MF01D-9 O04 696 (was 17C-4) - DD - Plan #2	200.0	200.0	91.6	91.0	147.399	CC, ES
NP MF01D-9 O04 696 (was 17C-4) - DD - Plan #2	300.0	298.7	94.5	93.5	97.633	SF
NP MF02A-9 O04 696 (was 18C-4) - DD - Plan #2						Out of range
NP MF06A-3 O04 696 (was 11C-3) - DD - Plan #2	200.0	200.0	8.1	7.4	12.957	CC, ES
NP MF06A-3 O04 696 (was 11C-3) - DD - Plan #2	500.0	499.8	15.1	13.1	7.584	SF
NP MF06B-3 O04 696 (was 15A-4) - DD - Plan #2	200.0	200.0	22.2	21.5	35.653	CC
NP MF06B-3 O04 696 (was 15A-4) - DD - Plan #2	300.0	298.9	22.5	21.5	23.106	ES
NP MF06B-3 O04 696 (was 15A-4) - DD - Plan #2	1,300.0	1,283.0	93.6	81.1	7.507	SF
NP MF06C-3 O04 696 (was 09C-4) - DD - Plan #2	200.0	200.0	29.4	28.8	47.377	CC
NP MF06C-3 O04 696 (was 09C-4) - DD - Plan #2	300.0	298.5	29.7	28.7	30.559	ES
NP MF06C-3 O04 696 (was 09C-4) - DD - Plan #2	1,200.0	1,188.1	99.1	88.8	9.630	SF
NP MF06E-3 O04 696 (was 11B-3) - DD - Plan #2	1,048.4	1,037.5	21.2	16.8	4.799	CC
NP MF06E-3 O04 696 (was 11B-3) - DD - Plan #2	1,200.0	1,187.3	23.3	15.4	2.956	ES
NP MF06E-3 O04 696 (was 11B-3) - DD - Plan #2	1,400.0	1,384.7	33.5	19.7	2.433	SF
NP MF08B-9 O04 696 (was 01B-9) - DD - Plan #2						Out of range
NP MF11A-3 O04 696 (was 12C-3) - DD - Plan #2	533.0	531.1	9.9	7.9	4.910	CC, ES
NP MF11A-3 O04 696 (was 12C-3) - DD - Plan #2	600.0	597.8	11.0	8.5	4.410	SF
NP MF11D-3 O04 696 (was 14B-3) - DD - Plan #2	200.0	200.0	7.7	7.1	12.356	CC
NP MF11D-3 O04 696 (was 14B-3) - DD - Plan #2	400.0	400.7	8.1	6.8	6.048	ES
NP MF11D-3 O04 696 (was 14B-3) - DD - Plan #2	1,200.0	1,202.7	32.8	22.0	3.027	SF
NP MF11E-3 O04 696 (was 13A-3) - DD - Plan #2	100.0	100.0	29.1	28.8	106.956	CC
NP MF11E-3 O04 696 (was 13A-3) - DD - Plan #2	400.0	403.0	29.2	27.9	22.045	ES
NP MF11E-3 O04 696 (was 13A-3) - DD - Plan #2	1,300.0	1,311.1	71.2	59.1	5.863	SF
NP MF11G-3 O04 696 (was 14C-3) - DD - Plan #2	200.0	200.0	36.6	35.9	58.842	CC, ES
NP MF11G-3 O04 696 (was 14C-3) - DD - Plan #2	1,000.0	1,014.4	97.5	92.3	18.740	SF
NP MF14A-3 O04 696 (was 13B-3) - DD - Plan #2	100.0	100.0	28.2	27.9	103.390	CC
NP MF14A-3 O04 696 (was 13B-3) - DD - Plan #2	200.0	200.0	28.2	27.5	45.306	ES
NP MF14A-3 O04 696 (was 13B-3) - DD - Plan #2	1,000.0	1,001.2	93.5	86.3	13.073	SF
NP MF14C-3 O04 696 (was 14D-3) - DD - Plan #2	200.0	200.0	35.8	35.2	57.662	CC, ES
NP MF14C-3 O04 696 (was 14D-3) - DD - Plan #2	800.0	801.6	82.3	77.9	18.743	SF
NP MF14D-3 O04 696 (was 19A-3) - DD - Plan #2	200.0	200.0	56.0	55.4	90.146	CC, ES
NP MF14D-3 O04 696 (was 19A-3) - DD - Plan #2	700.0	706.7	95.4	92.7	35.069	SF
NP MF14E-3 O04 696 (was 19B-3) - DD - Plan #2	200.0	200.0	55.5	54.9	89.330	CC, ES
NP MF14E-3 O04 696 (was 19B-3) - DD - Plan #2	600.0	601.2	84.0	81.5	33.759	SF
NP MF15A-4 O04 696 (was 11D-3) - DD - Plan #2	200.0	200.0	11.0	10.4	17.724	CC, ES
NP MF15A-4 O04 696 (was 11D-3) - DD - Plan #2	300.0	299.8	13.8	12.8	14.073	SF
NP MF15D-4 O04 696 (was 01B-9) - DD - Plan #2						Out of range
NP MF18B-4 O04 696 (was 01A-9) - DD - Plan #2						Out of range
NP MF19A-3 O04 696 (was 17B-4) - DD - Plan #2	200.0	200.0	64.3	63.7	103.518	CC, ES
NP MF19A-3 O04 696 (was 17B-4) - DD - Plan #2	600.0	601.5	96.5	94.2	42.185	SF
NP MF19C-3 O04 696 (was 20B-3) - DD - Plan #2	200.0	200.0	64.0	63.4	102.968	CC, ES
NP MF19C-3 O04 696 (was 20B-3) - DD - Plan #2	500.0	499.0	85.3	83.4	45.926	SF
NP MF19D-3 O04 696 (was 19C-3) - DD - Plan #2	200.0	200.0	83.9	83.3	135.088	CC, ES
NP MF19D-3 O04 696 (was 19C-3) - DD - Plan #2	400.0	399.7	94.2	92.9	71.554	SF
NP MF19E-3 O04 696 (was 19D-3) - DD - Plan #2	200.0	200.0	83.7	83.0	134.634	CC, ES

CC - Min centre to center distance or convergent point, SF - min separation factor, ES - min ellipse separation

Anticollision Report

Company:	EnCana Oil & Gas (USA) Inc	Local Co-ordinate Reference:	Well NP MF11B-3 O04 696 (was 14A-3)
Project:	North Piceance	TVD Reference:	WELL @ 6044.0ft (Original Well Elev)
Reference Site:	O04 696 (3rd)	MD Reference:	WELL @ 6044.0ft (Original Well Elev)
Site Error:	0.0ft	North Reference:	True
Reference Well:	NP MF11B-3 O04 696 (was 14A-3)	Survey Calculation Method:	Minimum Curvature
Well Error:	0.0ft	Output errors are at	2.00 sigma
Reference Wellbore	DD	Database:	EDM 5000.1 US Multi Users DB
Reference Design:	Plan #2	Offset TVD Reference:	Offset Datum

Summary						
Site Name	Reference Measured Depth (ft)	Offset Measured Depth (ft)	Distance Between Centres (ft)	Distance Between Ellipses (ft)	Separation Factor	Warning
Offset Well - Wellbore - Design						
O04 696 (3rd)						
NP MF19E-3 O04 696 (was 19D-3) - DD - Plan #2	400.0	399.4	93.9	92.5	68.254	SF
NP MF20F-3 O04 696 (was 20D-3) - DD - Plan #2	200.0	200.0	91.3	90.7	146.989	CC, ES
NP MF20F-3 O04 696 (was 20D-3) - DD - Plan #2	300.0	299.1	94.3	93.3	96.529	SF

Anticollision Report

Company:	EnCana Oil & Gas (USA) Inc	Local Co-ordinate Reference:	Well NP MF11B-3 O04 696 (was 14A-3)
Project:	North Piceance	TVD Reference:	WELL @ 6044.0ft (Original Well Elev)
Reference Site:	O04 696 (3rd)	MD Reference:	WELL @ 6044.0ft (Original Well Elev)
Site Error:	0.0ft	North Reference:	True
Reference Well:	NP MF11B-3 O04 696 (was 14A-3)	Survey Calculation Method:	Minimum Curvature
Well Error:	0.0ft	Output errors are at	2.00 sigma
Reference Wellbore	DD	Database:	EDM 5000.1 US Multi Users DB
Reference Design:	Plan #2	Offset TVD Reference:	Offset Datum

Offset Design													Offset Site Error:		0.0 ft
Survey Program: 0-MWD													Offset Well Error:		0.0 ft
Reference		Offset		Semi Major Axis			Distance						Warning		
Measured Depth	Vertical Depth	Measured Depth	Vertical Depth	Reference	Offset	Highside Toolface	Offset Wellbore Centre	Between Centres	Between Ellipses	Total Uncertainty	Separation				
(ft)	(ft)	(ft)	(ft)	(ft)	(ft)	(°)	+N/-S (ft)	+E/-W (ft)	(ft)	(ft)	Axis	Factor			
0.0	0.0	0.0	0.0	0.0	0.0	-136.83	-66.8	-62.7	91.6						
100.0	100.0	100.0	100.0	0.1	0.1	-136.83	-66.8	-62.7	91.6	91.3	0.27	336.372			
200.0	200.0	200.0	200.0	0.3	0.3	-136.83	-66.8	-62.7	91.6	91.0	0.62	147.399 CC, ES			
300.0	300.0	298.7	298.7	0.5	0.5	169.61	-67.4	-62.5	94.5	93.5	0.97	97.633 SF			

Anticollision Report

Company:	EnCana Oil & Gas (USA) Inc	Local Co-ordinate Reference:	Well NP MF11B-3 O04 696 (was 14A-3)
Project:	North Piceance	TVD Reference:	WELL @ 6044.0ft (Original Well Elev)
Reference Site:	O04 696 (3rd)	MD Reference:	WELL @ 6044.0ft (Original Well Elev)
Site Error:	0.0ft	North Reference:	True
Reference Well:	NP MF11B-3 O04 696 (was 14A-3)	Survey Calculation Method:	Minimum Curvature
Well Error:	0.0ft	Output errors are at	2.00 sigma
Reference Wellbore	DD	Database:	EDM 5000.1 US Multi Users DB
Reference Design:	Plan #2	Offset TVD Reference:	Offset Datum

Offset Design O04 696 (3rd) - NP MF06A-3 O04 696 (was 11C-3) - DD - Plan #2												Offset Site Error:	0.0 ft
Survey Program: 0-MWD												Offset Well Error:	0.0 ft
Reference		Offset		Semi Major Axis		Distance							
Measured Depth (ft)	Vertical Depth (ft)	Measured Depth (ft)	Vertical Depth (ft)	Reference (ft)	Offset (ft)	Highside Toolface (°)	Offset Wellbore Centre +N/-S (ft)	+E/-W (ft)	Between Centres (ft)	Between Ellipses (ft)	Total Uncertainty Axis	Separation Factor	Warning
0.0	0.0	0.0	0.0	0.0	0.0	-51.11	5.1	-6.3	8.1				
100.0	100.0	100.0	100.0	0.1	0.1	-51.11	5.1	-6.3	8.1	7.8	0.27	29.569	
200.0	200.0	200.0	200.0	0.3	0.3	-51.11	5.1	-6.3	8.1	7.4	0.62	12.957 CC, ES	
300.0	300.0	300.0	299.9	0.5	0.5	-104.07	7.2	-4.7	8.8	7.8	0.99	8.949	
400.0	399.6	399.9	399.5	0.7	0.7	-102.87	13.5	-0.1	11.2	9.8	1.43	7.839	
500.0	498.8	499.8	498.5	1.0	1.0	-101.68	24.0	7.6	15.1	13.1	1.99	7.584 SF	
600.0	597.1	599.5	596.6	1.4	1.4	-100.74	38.6	18.4	20.5	17.8	2.71	7.588	
700.0	694.3	699.1	693.5	1.8	1.8	-100.03	57.3	32.1	27.5	23.9	3.60	7.655	
800.0	790.2	798.6	788.8	2.4	2.3	-99.49	80.1	48.8	36.0	31.4	4.66	7.727	
900.0	884.4	897.8	882.4	3.0	3.0	-99.04	106.7	68.3	46.0	40.1	5.91	7.787	
1,000.0	976.8	996.8	973.9	3.7	3.7	-98.66	137.2	90.6	57.4	50.1	7.33	7.832	
1,100.0	1,067.1	1,095.6	1,063.1	4.6	4.5	-98.31	171.3	115.7	70.3	61.4	8.94	7.865	
1,200.0	1,154.9	1,194.1	1,149.8	5.5	5.4	-97.98	209.0	143.3	84.5	73.8	10.72	7.886	

Anticollision Report

Company:	EnCana Oil & Gas (USA) Inc	Local Co-ordinate Reference:	Well NP MF11B-3 O04 696 (was 14A-3)
Project:	North Piceance	TVD Reference:	WELL @ 6044.0ft (Original Well Elev)
Reference Site:	O04 696 (3rd)	MD Reference:	WELL @ 6044.0ft (Original Well Elev)
Site Error:	0.0ft	North Reference:	True
Reference Well:	NP MF11B-3 O04 696 (was 14A-3)	Survey Calculation Method:	Minimum Curvature
Well Error:	0.0ft	Output errors are at	2.00 sigma
Reference Wellbore	DD	Database:	EDM 5000.1 US Multi Users DB
Reference Design:	Plan #2	Offset TVD Reference:	Offset Datum

Offset Design O04 696 (3rd) - NP MF06B-3 O04 696 (was 15A-4) - DD - Plan #2												Offset Site Error:	0.0 ft
Survey Program: 0-MWD												Offset Well Error:	0.0 ft
Reference		Offset		Semi Major Axis			Distance						Warning
Measured Depth (ft)	Vertical Depth (ft)	Measured Depth (ft)	Vertical Depth (ft)	Reference (ft)	Offset (ft)	Highside Toolface (°)	Offset Wellbore Centre +N/-S (ft)	+E/-W (ft)	Between Centres (ft)	Between Ellipses (ft)	Total Uncertainty Axis	Separation Factor	
0.0	0.0	0.0	0.0	0.0	0.0	16.43	21.2	6.3	22.2				
100.0	100.0	100.0	100.0	0.1	0.1	16.43	21.2	6.3	22.2	21.9	0.27	81.362	
200.0	200.0	200.0	200.0	0.3	0.3	16.43	21.2	6.3	22.2	21.5	0.62	35.653 CC	
300.0	300.0	298.9	298.9	0.5	0.5	-38.64	23.3	7.8	22.5	21.5	0.97	23.106 ES	
400.0	399.6	397.8	397.5	0.7	0.7	-43.02	29.3	12.6	23.5	22.2	1.35	17.412	
500.0	498.8	496.7	495.5	1.0	1.0	-49.43	39.3	20.5	25.6	23.8	1.81	14.123	
600.0	597.1	595.5	592.6	1.4	1.3	-56.70	53.3	31.5	28.9	26.5	2.43	11.906	
700.0	694.3	694.1	688.6	1.8	1.8	-63.74	71.2	45.5	33.7	30.5	3.26	10.349	
800.0	790.2	792.7	783.2	2.4	2.3	-69.90	93.0	62.6	40.0	35.7	4.31	9.293	
900.0	884.4	891.1	876.1	3.0	2.9	-74.94	118.5	82.7	47.9	42.3	5.57	8.601	
1,000.0	976.8	989.4	967.1	3.7	3.6	-78.94	147.7	105.6	57.3	50.3	7.03	8.151	
1,100.0	1,067.1	1,087.5	1,055.9	4.6	4.4	-82.05	180.5	131.4	68.1	59.4	8.67	7.853	
1,200.0	1,154.9	1,185.3	1,142.2	5.5	5.3	-84.46	216.7	159.9	80.2	69.7	10.48	7.650	
1,300.0	1,240.2	1,283.0	1,225.9	6.5	6.2	-86.32	256.3	191.0	93.6	81.1	12.47	7.507 SF	

Anticollision Report

Company:	EnCana Oil & Gas (USA) Inc	Local Co-ordinate Reference:	Well NP MF11B-3 O04 696 (was 14A-3)
Project:	North Piceance	TVD Reference:	WELL @ 6044.0ft (Original Well Elev)
Reference Site:	O04 696 (3rd)	MD Reference:	WELL @ 6044.0ft (Original Well Elev)
Site Error:	0.0ft	North Reference:	True
Reference Well:	NP MF11B-3 O04 696 (was 14A-3)	Survey Calculation Method:	Minimum Curvature
Well Error:	0.0ft	Output errors are at	2.00 sigma
Reference Wellbore	DD	Database:	EDM 5000.1 US Multi Users DB
Reference Design:	Plan #2	Offset TVD Reference:	Offset Datum

Offset Design O04 696 (3rd) - NP MF06C-3 O04 696 (was 09C-4) - DD - Plan #2												Offset Site Error:	0.0 ft
Survey Program: 0-MWD												Offset Well Error:	0.0 ft
Reference		Offset		Semi Major Axis			Distance						Warning
Measured Depth (ft)	Vertical Depth (ft)	Measured Depth (ft)	Vertical Depth (ft)	Reference (ft)	Offset (ft)	Highside Toolface (°)	Offset Wellbore Centre +N/-S (ft)	+E/-W (ft)	Between Centres (ft)	Between Ellipses (ft)	Total Uncertainty Axis	Separation Factor	
0.0	0.0	0.0	0.0	0.0	0.0	21.87	27.3	11.0	29.4				
100.0	100.0	100.0	100.0	0.1	0.1	21.87	27.3	11.0	29.4	29.2	0.27	108.117	
200.0	200.0	200.0	200.0	0.3	0.3	21.87	27.3	11.0	29.4	28.8	0.62	47.377 CC	
300.0	300.0	298.5	298.5	0.5	0.5	-36.16	29.9	10.9	29.7	28.7	0.97	30.559 ES	
400.0	399.6	396.9	396.5	0.7	0.7	-48.53	37.4	11.0	31.4	30.1	1.34	23.364	
500.0	498.8	495.4	494.3	1.0	1.0	-61.16	48.8	13.8	35.4	33.6	1.80	19.654	
600.0	597.1	594.0	591.6	1.4	1.3	-71.19	63.6	20.3	41.3	38.9	2.43	17.007	
700.0	694.3	692.7	688.1	1.8	1.7	-78.72	81.8	30.6	48.7	45.4	3.26	14.924	
800.0	790.2	791.6	783.5	2.4	2.2	-84.28	103.4	44.5	57.2	52.9	4.30	13.312	
900.0	884.4	890.5	877.6	3.0	2.7	-88.38	128.4	62.1	66.7	61.2	5.53	12.066	
1,000.0	976.8	989.6	970.2	3.7	3.4	-91.42	156.6	83.3	76.9	69.9	6.94	11.084	
1,100.0	1,067.1	1,088.8	1,060.9	4.6	4.1	-93.70	188.1	108.0	87.7	79.2	8.52	10.290	
1,200.0	1,154.9	1,188.1	1,149.6	5.5	5.0	-95.42	222.7	136.3	99.1	88.8	10.29	9.630 SF	

Anticollision Report

Company:	EnCana Oil & Gas (USA) Inc	Local Co-ordinate Reference:	Well NP MF11B-3 O04 696 (was 14A-3)
Project:	North Piceance	TVD Reference:	WELL @ 6044.0ft (Original Well Elev)
Reference Site:	O04 696 (3rd)	MD Reference:	WELL @ 6044.0ft (Original Well Elev)
Site Error:	0.0ft	North Reference:	True
Reference Well:	NP MF11B-3 O04 696 (was 14A-3)	Survey Calculation Method:	Minimum Curvature
Well Error:	0.0ft	Output errors are at	2.00 sigma
Reference Wellbore	DD	Database:	EDM 5000.1 US Multi Users DB
Reference Design:	Plan #2	Offset TVD Reference:	Offset Datum

Offset Design O04 696 (3rd) - NP MF06E-3 O04 696 (was 11B-3) - DD - Plan #2													Offset Site Error:	0.0 ft
Survey Program: 0-MWD													Offset Well Error:	0.0 ft
Reference		Offset		Semi Major Axis			Distance							Warning
Measured Depth	Vertical Depth	Measured Depth	Vertical Depth	Reference	Offset	Highside Toolface	Offset Wellbore Centre	Between Centres	Between Ellipses	Total Uncertainty	Separation			
(ft)	(ft)	(ft)	(ft)	(ft)	(ft)	(°)	+N/-S (ft)	+E/-W (ft)	(ft)	(ft)	Axis	Factor		
0.0	0.0	0.0	0.0	0.0	0.0	38.99	22.3	18.0	28.6					
100.0	100.0	100.0	100.0	0.1	0.1	38.99	22.3	18.0	28.6	28.4	0.27	105.163		
200.0	200.0	200.0	200.0	0.3	0.3	38.99	22.3	18.0	28.6	28.0	0.62	46.083		
300.0	300.0	298.7	298.7	0.5	0.5	-13.33	23.2	20.4	28.4	27.4	0.97	29.247		
400.0	399.6	397.4	397.0	0.7	0.7	-9.64	26.1	27.5	27.6	26.3	1.32	20.889		
500.0	498.8	496.0	494.8	1.0	1.0	-4.19	31.2	38.9	26.7	25.1	1.67	16.021		
600.0	597.1	594.6	591.9	1.4	1.3	-0.73	40.2	53.7	25.9	23.9	2.01	12.896		
700.0	694.3	693.4	688.1	1.8	1.7	0.17	53.0	71.7	24.8	22.5	2.34	10.613		
800.0	790.2	792.1	783.2	2.4	2.3	-1.82	69.6	92.8	23.6	20.9	2.68	8.809		
900.0	884.4	890.9	876.7	3.0	2.9	-7.21	90.1	117.0	22.3	19.3	3.08	7.251		
1,000.0	976.8	989.7	968.6	3.7	3.5	-16.50	114.2	144.2	21.4	17.6	3.80	5.628		
1,048.4	1,020.7	1,037.5	1,012.3	4.1	3.9	-22.39	127.3	158.5	21.2	16.8	4.43	4.799 CC		
1,100.0	1,067.1	1,088.5	1,058.4	4.6	4.3	-29.49	142.1	174.4	21.4	16.1	5.35	4.006		
1,200.0	1,154.9	1,187.3	1,146.0	5.5	5.2	-44.29	173.6	207.4	23.3	15.4	7.87	2.956 ES		
1,300.0	1,240.2	1,286.0	1,231.1	6.5	6.2	-57.93	208.6	243.1	27.3	16.5	10.83	2.521		
1,400.0	1,322.6	1,384.7	1,313.5	7.6	7.2	-68.67	246.9	281.5	33.5	19.7	13.77	2.433 SF		
1,500.0	1,402.0	1,483.3	1,392.9	8.8	8.3	-76.23	288.6	322.4	41.6	25.1	16.55	2.516		
1,600.0	1,480.7	1,582.8	1,471.6	10.0	9.5	-80.31	332.2	364.9	51.0	31.9	19.09	2.672		
1,700.0	1,559.3	1,682.3	1,550.3	11.2	10.6	-83.12	375.8	407.5	60.6	39.0	21.56	2.809		
1,800.0	1,637.9	1,781.8	1,629.0	12.4	11.8	-85.16	419.5	450.0	70.2	46.2	23.99	2.927		
1,900.0	1,716.6	1,881.3	1,707.6	13.6	12.9	-86.71	463.1	492.5	79.9	53.5	26.40	3.028		
2,000.0	1,795.2	1,980.8	1,786.3	14.8	14.1	-87.92	506.7	535.0	89.7	60.9	28.79	3.116		
2,100.0	1,873.9	2,080.3	1,865.0	16.1	15.3	-88.89	550.3	577.5	99.5	68.3	31.18	3.191		

Anticollision Report

Company:	EnCana Oil & Gas (USA) Inc	Local Co-ordinate Reference:	Well NP MF11B-3 O04 696 (was 14A-3)
Project:	North Piceance	TVD Reference:	WELL @ 6044.0ft (Original Well Elev)
Reference Site:	O04 696 (3rd)	MD Reference:	WELL @ 6044.0ft (Original Well Elev)
Site Error:	0.0ft	North Reference:	True
Reference Well:	NP MF11B-3 O04 696 (was 14A-3)	Survey Calculation Method:	Minimum Curvature
Well Error:	0.0ft	Output errors are at	2.00 sigma
Reference Wellbore	DD	Database:	EDM 5000.1 US Multi Users DB
Reference Design:	Plan #2	Offset TVD Reference:	Offset Datum

Offset Design O04 696 (3rd) - NP MF11A-3 O04 696 (was 12C-3) - DD - Plan #2													Offset Site Error:	0.0 ft
Survey Program: 0-MWD													Offset Well Error:	0.0 ft
Reference		Offset		Semi Major Axis			Distance							
Measured Depth (ft)	Vertical Depth (ft)	Measured Depth (ft)	Vertical Depth (ft)	Reference (ft)	Offset (ft)	Highside Toolface (°)	Offset Wellbore Centre +N/-S (ft)	+E/-W (ft)	Between Centres (ft)	Between Ellipses (ft)	Total Uncertainty Axis	Separation Factor	Warning	
0.0	0.0	0.0	0.0	0.0	0.0	37.75	16.2	12.5	20.5					
100.0	100.0	100.0	100.0	0.1	0.1	37.75	16.2	12.5	20.5	20.2	0.27	75.193		
200.0	200.0	200.0	200.0	0.3	0.3	37.75	16.2	12.5	20.5	19.9	0.62	32.950		
300.0	300.0	300.0	300.0	0.5	0.5	-18.06	16.2	12.5	18.0	17.0	0.97	18.515		
400.0	399.6	399.0	399.0	0.7	0.7	-27.69	18.2	14.2	13.3	11.9	1.33	9.997		
500.0	498.8	498.3	497.9	1.0	0.9	-51.91	24.1	19.1	10.1	8.3	1.79	5.670		
533.0	531.3	531.1	530.5	1.1	1.0	-63.52	26.9	21.5	9.9	7.9	2.01	4.910 CC, ES		
600.0	597.1	597.8	596.6	1.4	1.1	-86.94	33.9	27.4	11.0	8.5	2.49	4.410 SF		
700.0	694.3	697.5	694.6	1.8	1.5	-108.91	47.8	39.0	16.1	12.9	3.24	4.966		
800.0	790.2	797.4	791.8	2.4	1.9	-118.31	65.5	53.9	23.5	19.4	4.05	5.799		
900.0	884.4	897.4	887.7	3.0	2.4	-122.12	87.2	72.1	32.3	27.3	5.01	6.441		
1,000.0	976.8	997.8	982.4	3.7	3.0	-123.52	112.7	93.6	42.1	35.9	6.14	6.859		
1,100.0	1,067.1	1,099.2	1,076.2	4.6	3.8	-124.73	140.9	119.6	51.5	44.1	7.40	6.963		
1,200.0	1,154.9	1,201.0	1,168.3	5.5	4.6	-126.15	171.4	150.3	60.2	51.4	8.76	6.866		
1,300.0	1,240.2	1,303.2	1,258.6	6.5	5.5	-127.77	204.0	185.6	68.0	57.8	10.20	6.666		
1,400.0	1,322.6	1,405.9	1,346.6	7.6	6.5	-129.57	238.6	225.6	75.0	63.3	11.68	6.421		
1,500.0	1,402.0	1,508.8	1,431.9	8.8	7.6	-131.51	275.1	270.0	81.1	67.9	13.17	6.159		
1,600.0	1,480.7	1,608.6	1,513.4	10.0	8.7	-132.96	311.3	314.9	86.3	71.6	14.64	5.891		
1,700.0	1,559.3	1,708.5	1,594.9	11.2	9.8	-134.25	347.5	359.8	91.5	75.4	16.08	5.689		
1,800.0	1,637.9	1,808.3	1,676.4	12.4	10.9	-135.40	383.7	404.7	96.8	79.3	17.49	5.534		

Anticollision Report

Company:	EnCana Oil & Gas (USA) Inc	Local Co-ordinate Reference:	Well NP MF11B-3 O04 696 (was 14A-3)
Project:	North Piceance	TVD Reference:	WELL @ 6044.0ft (Original Well Elev)
Reference Site:	O04 696 (3rd)	MD Reference:	WELL @ 6044.0ft (Original Well Elev)
Site Error:	0.0ft	North Reference:	True
Reference Well:	NP MF11B-3 O04 696 (was 14A-3)	Survey Calculation Method:	Minimum Curvature
Well Error:	0.0ft	Output errors are at	2.00 sigma
Reference Wellbore	DD	Database:	EDM 5000.1 US Multi Users DB
Reference Design:	Plan #2	Offset TVD Reference:	Offset Datum

Offset Design O04 696 (3rd) - NP MF11D-3 O04 696 (was 14B-3) - DD - Plan #2												Offset Site Error:	0.0 ft
Survey Program: 0-MWD												Offset Well Error:	0.0 ft
Reference		Offset		Semi Major Axis			Distance						Warning
Measured Depth (ft)	Vertical Depth (ft)	Measured Depth (ft)	Vertical Depth (ft)	Reference (ft)	Offset (ft)	Highside Toolface (°)	Offset Wellbore Centre +N/-S (ft)	+E/-W (ft)	Between Centres (ft)	Between Ellipses (ft)	Total Uncertainty Axis	Separation Factor	
0.0	0.0	0.0	0.0	0.0	0.0	-142.25	-6.1	-4.7	7.7				
100.0	100.0	100.0	100.0	0.1	0.1	-142.25	-6.1	-4.7	7.7	7.4	0.27	28.197	
200.0	200.0	200.0	200.0	0.3	0.3	-142.25	-6.1	-4.7	7.7	7.1	0.62	12.356	CC
300.0	300.0	300.4	300.3	0.5	0.5	162.09	-4.8	-2.4	7.8	6.8	0.97	7.990	
400.0	399.6	400.7	400.4	0.7	0.7	155.99	-0.8	4.4	8.1	6.8	1.34	6.048	ES
500.0	498.8	501.1	499.8	1.0	1.0	147.10	5.7	15.8	8.9	7.1	1.79	4.963	
600.0	597.1	601.4	598.5	1.4	1.4	137.22	14.9	31.8	10.2	7.8	2.41	4.242	
700.0	694.3	701.7	696.0	1.8	1.8	128.05	26.5	52.1	12.3	9.0	3.27	3.747	
800.0	790.2	802.0	792.1	2.4	2.4	120.47	40.8	76.9	15.0	10.7	4.38	3.433	
900.0	884.4	902.2	886.5	3.0	3.0	114.56	57.5	106.0	18.5	12.8	5.71	3.246	
1,000.0	976.8	1,002.4	979.0	3.7	3.8	110.04	76.6	139.4	22.7	15.4	7.23	3.136	
1,100.0	1,067.1	1,102.6	1,069.4	4.6	4.6	106.59	98.1	176.9	27.5	18.5	8.95	3.069	
1,200.0	1,154.9	1,202.7	1,157.3	5.5	5.5	103.93	122.0	218.4	32.8	22.0	10.85	3.027	SF
1,300.0	1,240.2	1,302.6	1,243.2	6.5	6.5	104.21	147.3	262.5	39.0	26.2	12.78	3.050	
1,400.0	1,322.6	1,402.1	1,328.8	7.6	7.5	110.42	172.6	306.7	46.7	32.2	14.44	3.232	
1,500.0	1,402.0	1,501.2	1,414.0	8.8	8.5	119.35	197.8	350.6	57.1	41.5	15.55	3.671	
1,600.0	1,480.7	1,600.2	1,499.0	10.0	9.4	126.48	223.0	394.4	69.3	52.9	16.37	4.233	
1,700.0	1,559.3	1,699.1	1,584.1	11.2	10.4	131.44	248.2	438.2	82.2	65.1	17.16	4.792	
1,800.0	1,637.9	1,798.1	1,669.2	12.4	11.4	135.03	273.3	482.1	95.6	77.6	17.97	5.321	

Anticollision Report

Company:	EnCana Oil & Gas (USA) Inc	Local Co-ordinate Reference:	Well NP MF11B-3 O04 696 (was 14A-3)
Project:	North Piceance	TVD Reference:	WELL @ 6044.0ft (Original Well Elev)
Reference Site:	O04 696 (3rd)	MD Reference:	WELL @ 6044.0ft (Original Well Elev)
Site Error:	0.0ft	North Reference:	True
Reference Well:	NP MF11B-3 O04 696 (was 14A-3)	Survey Calculation Method:	Minimum Curvature
Well Error:	0.0ft	Output errors are at	2.00 sigma
Reference Wellbore	DD	Database:	EDM 5000.1 US Multi Users DB
Reference Design:	Plan #2	Offset TVD Reference:	Offset Datum

Offset Design O04 696 (3rd) - NP MF11E-3 O04 696 (was 13A-3) - DD - Plan #2												Offset Site Error:	0.0 ft
Survey Program: 0-MWD												Offset Well Error:	0.0 ft
Reference		Offset		Semi Major Axis			Distance						Warning
Measured Depth (ft)	Vertical Depth (ft)	Measured Depth (ft)	Vertical Depth (ft)	Reference (ft)	Offset (ft)	Highside Toolface (°)	Offset Wellbore Centre +N/-S (ft)	+E/-W (ft)	Between Centres (ft)	Between Ellipses (ft)	Total Uncertainty Axis	Separation Factor	
0.0	0.0	0.0	0.0	0.0	0.0	-126.20	-17.2	-23.5	29.1				
100.0	100.0	100.0	100.0	0.1	0.1	-126.20	-17.2	-23.5	29.1	28.8	0.27	106.956 CC	
200.0	200.0	200.0	200.0	0.3	0.3	-126.20	-17.2	-23.5	29.1	28.5	0.62	46.868	
300.0	300.0	301.5	301.5	0.5	0.5	179.22	-16.1	-21.1	29.1	28.2	0.97	29.950	
400.0	399.6	403.0	402.6	0.7	0.7	176.03	-12.7	-13.7	29.2	27.9	1.33	22.045 ES	
500.0	498.8	504.5	503.2	1.0	1.0	170.80	-7.0	-1.5	29.6	27.9	1.70	17.445	
600.0	597.1	605.8	602.8	1.4	1.4	163.82	0.9	15.5	30.6	28.4	2.14	14.282	
700.0	694.3	707.1	701.2	1.8	1.9	155.61	10.9	37.2	32.3	29.6	2.75	11.749	
800.0	790.2	808.3	798.1	2.4	2.4	146.96	23.2	63.7	35.3	31.6	3.65	9.661	
900.0	884.4	909.4	893.2	3.0	3.1	138.64	37.6	94.7	39.6	34.7	4.89	8.099	
1,000.0	976.8	1,010.4	986.3	3.7	3.8	131.20	54.0	130.2	45.3	38.8	6.43	7.043	
1,100.0	1,067.1	1,111.1	1,077.0	4.6	4.7	124.84	72.5	170.0	52.3	44.1	8.22	6.365	
1,200.0	1,154.9	1,211.7	1,165.0	5.5	5.7	119.58	92.8	214.0	60.7	50.5	10.23	5.940	
1,300.0	1,240.2	1,311.1	1,251.1	6.5	6.6	117.64	113.8	259.2	71.2	59.1	12.15	5.863 SF	
1,400.0	1,322.6	1,410.2	1,336.8	7.6	7.6	119.28	134.7	304.3	84.2	70.3	13.86	6.072	
1,500.0	1,402.0	1,508.8	1,422.1	8.8	8.5	122.94	155.5	349.1	99.8	84.5	15.32	6.516	

Anticollision Report

Company:	EnCana Oil & Gas (USA) Inc	Local Co-ordinate Reference:	Well NP MF11B-3 O04 696 (was 14A-3)
Project:	North Piceance	TVD Reference:	WELL @ 6044.0ft (Original Well Elev)
Reference Site:	O04 696 (3rd)	MD Reference:	WELL @ 6044.0ft (Original Well Elev)
Site Error:	0.0ft	North Reference:	True
Reference Well:	NP MF11B-3 O04 696 (was 14A-3)	Survey Calculation Method:	Minimum Curvature
Well Error:	0.0ft	Output errors are at	2.00 sigma
Reference Wellbore	DD	Database:	EDM 5000.1 US Multi Users DB
Reference Design:	Plan #2	Offset TVD Reference:	Offset Datum

Offset Design												004 696 (3rd) - NP MF11G-3 004 696 (was 14C-3) - DD - Plan #2		Offset Site Error:		0.0 ft	
Survey Program:												0-MWD		Offset Well Error:		0.0 ft	
Reference		Offset		Semi Major Axis			Distance							Warning			
Measured Depth	Vertical Depth	Measured Depth	Vertical Depth	Reference	Offset	Highside Toolface	Offset Wellbore Centre		Between Centres	Between Ellipses	Total Uncertainty Axis	Separation Factor					
(ft)	(ft)	(ft)	(ft)	(ft)	(ft)	(°)	+N/-S (ft)	+E/-W (ft)	(ft)	(ft)							
0.0	0.0	0.0	0.0	0.0	0.0	-129.53	-23.3	-28.2	36.6								
100.0	100.0	100.0	100.0	0.1	0.1	-129.53	-23.3	-28.2	36.6	36.3	0.27	134.281					
200.0	200.0	200.0	200.0	0.3	0.3	-129.53	-23.3	-28.2	36.6	35.9	0.62	58.842	CC, ES				
300.0	300.0	300.0	300.0	0.5	0.5	177.16	-23.3	-28.2	39.2	38.2	0.97	40.404					
400.0	399.6	401.8	401.8	0.7	0.7	176.17	-22.6	-25.6	44.6	43.3	1.32	33.781					
500.0	498.8	503.9	503.5	1.0	0.9	173.07	-20.6	-17.7	50.6	48.9	1.68	30.080					
600.0	597.1	606.0	604.7	1.4	1.2	168.62	-17.3	-4.5	57.3	55.2	2.08	27.579					
700.0	694.3	708.2	705.1	1.8	1.5	163.40	-12.7	14.0	65.0	62.5	2.56	25.407					
800.0	790.2	810.4	804.3	2.4	2.0	157.88	-6.8	37.6	74.2	71.0	3.20	23.158					
900.0	884.4	912.4	902.0	3.0	2.6	152.41	0.4	66.2	85.0	80.9	4.07	20.861					
1,000.0	976.8	1,014.4	997.8	3.7	3.2	147.22	8.8	99.9	97.5	92.3	5.20	18.740	SF				

Anticollision Report

Company:	EnCana Oil & Gas (USA) Inc	Local Co-ordinate Reference:	Well NP MF11B-3 O04 696 (was 14A-3)
Project:	North Piceance	TVD Reference:	WELL @ 6044.0ft (Original Well Elev)
Reference Site:	O04 696 (3rd)	MD Reference:	WELL @ 6044.0ft (Original Well Elev)
Site Error:	0.0ft	North Reference:	True
Reference Well:	NP MF11B-3 O04 696 (was 14A-3)	Survey Calculation Method:	Minimum Curvature
Well Error:	0.0ft	Output errors are at	2.00 sigma
Reference Wellbore	DD	Database:	EDM 5000.1 US Multi Users DB
Reference Design:	Plan #2	Offset TVD Reference:	Offset Datum

Offset Design												004 696 (3rd) - NP MF14A-3		004 696 (was 13B-3) - DD - Plan #2		Offset Site Error:		0.0 ft	
Survey Program:												0-MWD				Offset Well Error:		0.0 ft	
Reference		Offset		Semi Major Axis			Distance												
Measured Depth	Vertical Depth	Measured Depth	Vertical Depth	Reference	Offset	Highside Toolface	Offset Wellbore Centre		Between Centres	Between Ellipses	Total Uncertainty	Separation	Warning						
Depth (ft)	Depth (ft)	Depth (ft)	Depth (ft)	(ft)	(ft)	(°)	+N/-S (ft)	+E/-W (ft)	(ft)	(ft)	Axis	Factor							
0.0	0.0	0.0	0.0	0.0	0.0	-142.25	-22.3	-17.2	28.2										
100.0	100.0	100.0	100.0	0.1	0.1	-142.25	-22.3	-17.2	28.2	27.9	0.27	103.390	CC						
200.0	200.0	200.0	200.0	0.3	0.3	-142.25	-22.3	-17.2	28.2	27.5	0.62	45.306	ES						
300.0	300.0	301.1	301.0	0.5	0.5	162.06	-21.8	-14.6	28.7	27.8	0.98	29.417							
400.0	399.6	402.1	401.7	0.7	0.7	156.07	-20.5	-6.7	30.7	29.4	1.36	22.522							
500.0	498.8	502.9	501.6	1.0	1.0	147.80	-18.2	6.4	34.7	32.8	1.85	18.782							
600.0	597.1	603.4	600.4	1.4	1.4	139.14	-15.1	24.6	41.0	38.5	2.50	16.444							
700.0	694.3	703.6	697.8	1.8	1.8	131.43	-11.1	47.8	50.1	46.8	3.36	14.936							
800.0	790.2	803.3	793.3	2.4	2.4	125.18	-6.3	75.9	62.0	57.6	4.43	13.996							
900.0	884.4	902.6	886.8	3.0	3.0	120.28	-0.7	108.7	76.5	70.8	5.70	13.424							
1,000.0	976.8	1,001.2	977.9	3.7	3.8	116.48	5.7	146.0	93.5	86.3	7.15	13.073	SF						

Anticollision Report

Company:	EnCana Oil & Gas (USA) Inc	Local Co-ordinate Reference:	Well NP MF11B-3 O04 696 (was 14A-3)
Project:	North Piceance	TVD Reference:	WELL @ 6044.0ft (Original Well Elev)
Reference Site:	O04 696 (3rd)	MD Reference:	WELL @ 6044.0ft (Original Well Elev)
Site Error:	0.0ft	North Reference:	True
Reference Well:	NP MF11B-3 O04 696 (was 14A-3)	Survey Calculation Method:	Minimum Curvature
Well Error:	0.0ft	Output errors are at	2.00 sigma
Reference Wellbore	DD	Database:	EDM 5000.1 US Multi Users DB
Reference Design:	Plan #2	Offset TVD Reference:	Offset Datum

Offset Design O04 696 (3rd) - NP MF14C-3 O04 696 (was 14D-3) - DD - Plan #2												Offset Site Error: 0.0 ft	
Survey Program: 0-MWD												Offset Well Error: 0.0 ft	
Reference		Offset		Semi Major Axis			Distance						Warning
Measured Depth (ft)	Vertical Depth (ft)	Measured Depth (ft)	Vertical Depth (ft)	Reference (ft)	Offset (ft)	Highside Toolface (°)	Offset Wellbore Centre +N/-S (ft)	+E/-W (ft)	Between Centres (ft)	Between Ellipses (ft)	Total Uncertainty Axis	Separation Factor	
0.0	0.0	0.0	0.0	0.0	0.0	-142.25	-28.3	-21.9	35.8				
100.0	100.0	100.0	100.0	0.1	0.1	-142.25	-28.3	-21.9	35.8	35.6	0.27	131.588	
200.0	200.0	200.0	200.0	0.3	0.3	-142.25	-28.3	-21.9	35.8	35.2	0.62	57.662	CC, ES
300.0	300.0	301.2	301.1	0.5	0.5	162.09	-28.3	-19.3	36.7	35.7	0.98	37.521	
400.0	399.6	402.2	401.8	0.7	0.7	156.28	-28.1	-11.2	39.6	38.3	1.37	28.887	
500.0	498.8	502.9	501.6	1.0	1.0	148.42	-27.9	2.0	45.2	43.4	1.86	24.305	
600.0	597.1	603.1	600.1	1.4	1.4	140.35	-27.6	20.4	54.1	51.6	2.51	21.541	
700.0	694.3	702.7	696.9	1.8	1.8	133.27	-27.1	43.8	66.4	63.1	3.35	19.810	
800.0	790.2	801.6	791.7	2.4	2.4	127.54	-26.6	72.0	82.3	77.9	4.39	18.743	SF

Anticollision Report

Company:	EnCana Oil & Gas (USA) Inc	Local Co-ordinate Reference:	Well NP MF11B-3 O04 696 (was 14A-3)
Project:	North Piceance	TVD Reference:	WELL @ 6044.0ft (Original Well Elev)
Reference Site:	O04 696 (3rd)	MD Reference:	WELL @ 6044.0ft (Original Well Elev)
Site Error:	0.0ft	North Reference:	True
Reference Well:	NP MF11B-3 O04 696 (was 14A-3)	Survey Calculation Method:	Minimum Curvature
Well Error:	0.0ft	Output errors are at	2.00 sigma
Reference Wellbore	DD	Database:	EDM 5000.1 US Multi Users DB
Reference Design:	Plan #2	Offset TVD Reference:	Offset Datum

Offset Design													O04 696 (3rd) - NP MF14D-3 O04 696 (was 19A-3) - DD - Plan #2		Offset Site Error:		0.0 ft
Survey Program: 0-MWD													Offset Well Error:		0.0 ft		
Reference		Offset		Semi Major Axis			Distance							Warning			
Measured Depth	Vertical Depth	Measured Depth	Vertical Depth	Reference	Offset	Highside Toolface	Offset Wellbore Centre		Between Centres	Between Ellipses	Total Uncertainty Axis	Separation Factor					
(ft)	(ft)	(ft)	(ft)	(ft)	(ft)	(°)	+N/-S (ft)	+E/-W (ft)	(ft)	(ft)							
0.0	0.0	0.0	0.0	0.0	0.0	-133.35	-38.4	-40.7	56.0								
100.0	100.0	100.0	100.0	0.1	0.1	-133.35	-38.4	-40.7	56.0	55.7	0.27	205.718					
200.0	200.0	200.0	200.0	0.3	0.3	-133.35	-38.4	-40.7	56.0	55.4	0.62	90.146 CC, ES					
300.0	300.0	300.0	300.0	0.5	0.5	173.44	-38.4	-40.7	58.6	57.6	0.97	60.444					
400.0	399.6	402.0	401.9	0.7	0.7	172.44	-38.7	-38.0	64.6	63.3	1.32	48.804					
500.0	498.8	503.9	503.5	1.0	0.9	168.93	-39.3	-29.9	72.4	70.7	1.70	42.540					
600.0	597.1	605.5	604.2	1.4	1.2	163.88	-40.5	-16.4	82.5	80.4	2.15	38.412					
700.0	694.3	706.7	703.6	1.8	1.5	158.16	-42.0	2.3	95.4	92.7	2.72	35.069 SF					

Anticollision Report

Company:	EnCana Oil & Gas (USA) Inc	Local Co-ordinate Reference:	Well NP MF11B-3 O04 696 (was 14A-3)
Project:	North Piceance	TVD Reference:	WELL @ 6044.0ft (Original Well Elev)
Reference Site:	O04 696 (3rd)	MD Reference:	WELL @ 6044.0ft (Original Well Elev)
Site Error:	0.0ft	North Reference:	True
Reference Well:	NP MF11B-3 O04 696 (was 14A-3)	Survey Calculation Method:	Minimum Curvature
Well Error:	0.0ft	Output errors are at	2.00 sigma
Reference Wellbore	DD	Database:	EDM 5000.1 US Multi Users DB
Reference Design:	Plan #2	Offset TVD Reference:	Offset Datum

Offset Design O04 696 (3rd) - NP MF14E-3 O04 696 (was 19B-3) - DD - Plan #2													Offset Site Error:	0.0 ft
Survey Program: 0-MWD													Offset Well Error:	0.0 ft
Reference		Offset		Semi Major Axis			Distance						Warning	
Measured Depth (ft)	Vertical Depth (ft)	Measured Depth (ft)	Vertical Depth (ft)	Reference (ft)	Offset (ft)	Highside Toolface (°)	Offset Wellbore Centre +N/-S (ft)	+E/-W (ft)	Between Centres (ft)	Between Ellipses (ft)	Total Uncertainty Axis	Separation Factor		
0.0	0.0	0.0	0.0	0.0	0.0	-141.62	-43.5	-34.5	55.5					
100.0	100.0	100.0	100.0	0.1	0.1	-141.62	-43.5	-34.5	55.5	55.2	0.27	203.855		
200.0	200.0	200.0	200.0	0.3	0.3	-141.62	-43.5	-34.5	55.5	54.9	0.62	89.330 CC, ES		
300.0	300.0	301.1	301.1	0.5	0.5	163.08	-44.2	-31.9	57.0	56.0	0.98	58.168		
400.0	399.6	401.9	401.5	0.7	0.7	158.27	-46.3	-24.2	61.8	60.5	1.38	44.821		
500.0	498.8	502.0	500.8	1.0	1.0	151.79	-49.8	-11.5	70.6	68.8	1.87	37.834		
600.0	597.1	601.2	598.3	1.4	1.4	145.11	-54.5	6.1	84.0	81.5	2.49	33.759 SF		

Anticollision Report

Company:	EnCana Oil & Gas (USA) Inc	Local Co-ordinate Reference:	Well NP MF11B-3 O04 696 (was 14A-3)
Project:	North Piceance	TVD Reference:	WELL @ 6044.0ft (Original Well Elev)
Reference Site:	O04 696 (3rd)	MD Reference:	WELL @ 6044.0ft (Original Well Elev)
Site Error:	0.0ft	North Reference:	True
Reference Well:	NP MF11B-3 O04 696 (was 14A-3)	Survey Calculation Method:	Minimum Curvature
Well Error:	0.0ft	Output errors are at	2.00 sigma
Reference Wellbore	DD	Database:	EDM 5000.1 US Multi Users DB
Reference Design:	Plan #2	Offset TVD Reference:	Offset Datum

Offset Design O04 696 (3rd) - NP MF15A-4 O04 696 (was 11D-3) - DD - Plan #2												Offset Site Error:	0.0 ft
Survey Program: 0-MWD												Offset Well Error:	0.0 ft
Reference		Offset		Semi Major Axis		Distance							
Measured Depth (ft)	Vertical Depth (ft)	Measured Depth (ft)	Vertical Depth (ft)	Reference (ft)	Offset (ft)	Highside Toolface (°)	Offset Wellbore Centre +N/-S (ft)	+E/-W (ft)	Between Centres (ft)	Between Ellipses (ft)	Total Uncertainty Axis	Separation Factor	Warning
0.0	0.0	0.0	0.0	0.0	0.0	-95.27	-1.0	-11.0	11.0				
100.0	100.0	100.0	100.0	0.1	0.1	-95.27	-1.0	-11.0	11.0	10.7	0.27	40.447	
200.0	200.0	200.0	200.0	0.3	0.3	-95.27	-1.0	-11.0	11.0	10.4	0.62	17.724 CC, ES	
300.0	300.0	299.8	299.8	0.5	0.5	-143.71	1.5	-11.7	13.8	12.8	0.98	14.073 SF	
400.0	399.6	399.1	398.7	0.7	0.7	-136.21	8.9	-13.8	22.4	21.1	1.39	16.171	
500.0	498.8	497.3	496.1	1.0	1.0	-131.47	21.2	-17.4	37.1	35.2	1.88	19.731	
600.0	597.1	594.0	591.2	1.4	1.3	-128.74	37.9	-22.2	57.6	55.1	2.48	23.245	
700.0	694.3	689.5	684.3	1.8	1.7	-127.21	58.6	-28.2	83.6	80.4	3.17	26.357	

Anticollision Report

Company:	EnCana Oil & Gas (USA) Inc	Local Co-ordinate Reference:	Well NP MF11B-3 O04 696 (was 14A-3)
Project:	North Piceance	TVD Reference:	WELL @ 6044.0ft (Original Well Elev)
Reference Site:	O04 696 (3rd)	MD Reference:	WELL @ 6044.0ft (Original Well Elev)
Site Error:	0.0ft	North Reference:	True
Reference Well:	NP MF11B-3 O04 696 (was 14A-3)	Survey Calculation Method:	Minimum Curvature
Well Error:	0.0ft	Output errors are at	2.00 sigma
Reference Wellbore	DD	Database:	EDM 5000.1 US Multi Users DB
Reference Design:	Plan #2	Offset TVD Reference:	Offset Datum

Offset Design O04 696 (3rd) - NP MF19A-3 O04 696 (was 17B-4) - DD - Plan #2													Offset Site Error: 0.0 ft
Survey Program: 0-MWD													Offset Well Error: 0.0 ft
Reference		Offset		Semi Major Axis		Distance							
Measured Depth (ft)	Vertical Depth (ft)	Measured Depth (ft)	Vertical Depth (ft)	Reference (ft)	Offset (ft)	Highside Toolface (°)	Offset Wellbore Centre +N/-S (ft)	+E/-W (ft)	Between Centres (ft)	Between Ellipses (ft)	Total Uncertainty Axis	Separation Factor	Warning
0.0	0.0	0.0	0.0	0.0	0.0	-135.06	-45.5	-45.4	64.3				
100.0	100.0	100.0	100.0	0.1	0.1	-135.06	-45.5	-45.4	64.3	64.0	0.27	236.232	
200.0	200.0	200.0	200.0	0.3	0.3	-135.06	-45.5	-45.4	64.3	63.7	0.62	103.518 CC, ES	
300.0	300.0	300.6	300.6	0.5	0.5	171.22	-45.8	-44.8	66.7	65.7	0.97	68.618	
400.0	399.6	401.7	401.5	0.7	0.7	168.22	-47.9	-39.9	72.5	71.2	1.34	54.165	
500.0	498.8	502.1	501.4	1.0	0.9	162.99	-52.0	-30.1	82.2	80.5	1.76	46.667	
600.0	597.1	601.5	599.5	1.4	1.2	156.88	-58.1	-15.7	96.5	94.2	2.29	42.185 SF	

Anticollision Report

Company:	EnCana Oil & Gas (USA) Inc	Local Co-ordinate Reference:	Well NP MF11B-3 O04 696 (was 14A-3)
Project:	North Piceance	TVD Reference:	WELL @ 6044.0ft (Original Well Elev)
Reference Site:	O04 696 (3rd)	MD Reference:	WELL @ 6044.0ft (Original Well Elev)
Site Error:	0.0ft	North Reference:	True
Reference Well:	NP MF11B-3 O04 696 (was 14A-3)	Survey Calculation Method:	Minimum Curvature
Well Error:	0.0ft	Output errors are at	2.00 sigma
Reference Wellbore	DD	Database:	EDM 5000.1 US Multi Users DB
Reference Design:	Plan #2	Offset TVD Reference:	Offset Datum

Offset Design O04 696 (3rd) - NP MF19C-3 O04 696 (was 20B-3) - DD - Plan #2													Offset Site Error:	0.0 ft
Survey Program: 0-MWD													Offset Well Error:	0.0 ft
Reference		Offset		Semi Major Axis			Distance						Warning	
Measured Depth (ft)	Vertical Depth (ft)	Measured Depth (ft)	Vertical Depth (ft)	Reference (ft)	Offset (ft)	Highside Toolface (°)	Offset Wellbore Centre +N/-S (ft)	+E/-W (ft)	Between Centres (ft)	Between Ellipses (ft)	Total Uncertainty Axis	Separation Factor		
0.0	0.0	0.0	0.0	0.0	0.0	-142.25	-50.6	-39.2	64.0					
100.0	100.0	100.0	100.0	0.1	0.1	-142.25	-50.6	-39.2	64.0	63.7	0.27	234.978		
200.0	200.0	200.0	200.0	0.3	0.3	-142.25	-50.6	-39.2	64.0	63.4	0.62	102.968 CC, ES		
300.0	300.0	300.3	300.3	0.5	0.5	162.57	-51.9	-36.9	66.2	65.2	0.98	67.563		
400.0	399.6	400.2	399.8	0.7	0.7	158.20	-55.9	-30.1	73.1	71.7	1.38	53.006		
500.0	498.8	499.0	497.8	1.0	1.0	152.55	-62.4	-19.0	85.3	83.4	1.86	45.926 SF		

Anticollision Report

Company:	EnCana Oil & Gas (USA) Inc	Local Co-ordinate Reference:	Well NP MF11B-3 O04 696 (was 14A-3)
Project:	North Piceance	TVD Reference:	WELL @ 6044.0ft (Original Well Elev)
Reference Site:	O04 696 (3rd)	MD Reference:	WELL @ 6044.0ft (Original Well Elev)
Site Error:	0.0ft	North Reference:	True
Reference Well:	NP MF11B-3 O04 696 (was 14A-3)	Survey Calculation Method:	Minimum Curvature
Well Error:	0.0ft	Output errors are at	2.00 sigma
Reference Wellbore	DD	Database:	EDM 5000.1 US Multi Users DB
Reference Design:	Plan #2	Offset TVD Reference:	Offset Datum

Offset Design													Offset Site Error:		0.0 ft
Survey Program: 0-MWD													Offset Well Error:		0.0 ft
Reference		Offset		Semi Major Axis			Distance								
Measured Depth	Vertical Depth	Measured Depth	Vertical Depth	Reference	Offset	Highside Toolface	Offset Wellbore Centre	Between Centres	Between Ellipses	Total Uncertainty Axis	Separation Factor	Warning			
(ft)	(ft)	(ft)	(ft)	(ft)	(ft)	(°)	+N/-S (ft)	+E/-W (ft)	(ft)	(ft)					
0.0	0.0	0.0	0.0	0.0	0.0	-136.32	-60.7	-58.0	83.9						
100.0	100.0	100.0	100.0	0.1	0.1	-136.32	-60.7	-58.0	83.9	83.7	0.27	308.278			
200.0	200.0	200.0	200.0	0.3	0.3	-136.32	-60.7	-58.0	83.9	83.3	0.62	135.088 CC, ES			
300.0	300.0	300.0	300.0	0.5	0.5	170.45	-60.7	-58.0	86.5	85.5	0.97	89.210			
400.0	399.6	399.7	399.7	0.7	0.7	170.81	-61.1	-57.5	94.2	92.9	1.32	71.554 SF			

Anticollision Report

Company:	EnCana Oil & Gas (USA) Inc	Local Co-ordinate Reference:	Well NP MF11B-3 O04 696 (was 14A-3)
Project:	North Piceance	TVD Reference:	WELL @ 6044.0ft (Original Well Elev)
Reference Site:	O04 696 (3rd)	MD Reference:	WELL @ 6044.0ft (Original Well Elev)
Site Error:	0.0ft	North Reference:	True
Reference Well:	NP MF11B-3 O04 696 (was 14A-3)	Survey Calculation Method:	Minimum Curvature
Well Error:	0.0ft	Output errors are at	2.00 sigma
Reference Wellbore	DD	Database:	EDM 5000.1 US Multi Users DB
Reference Design:	Plan #2	Offset TVD Reference:	Offset Datum

Offset Design													Offset Site Error:		0.0 ft
Survey Program: 0-MWD													Offset Well Error:		0.0 ft
Reference		Offset		Semi Major Axis			Distance						Warning		
Measured Depth	Vertical Depth	Measured Depth	Vertical Depth	Reference	Offset	Highside Toolface	Offset Wellbore Centre	Between Centres	Between Ellipses	Total Uncertainty Axis	Separation Factor				
(ft)	(ft)	(ft)	(ft)	(ft)	(ft)	(°)	+N/-S (ft)	+E/-W (ft)	(ft)	(ft)					
0.0	0.0	0.0	0.0	0.0	0.0	-141.83	-65.8	-51.7	83.7						
100.0	100.0	100.0	100.0	0.1	0.1	-141.83	-65.8	-51.7	83.7	83.4	0.27	307.241			
200.0	200.0	200.0	200.0	0.3	0.3	-141.83	-65.8	-51.7	83.7	83.0	0.62	134.634 CC, ES			
300.0	300.0	300.0	299.9	0.5	0.5	163.36	-67.3	-49.6	86.2	85.2	0.98	88.017			
400.0	399.6	399.4	399.0	0.7	0.7	159.88	-72.1	-43.4	93.9	92.5	1.38	68.254 SF			

Anticollision Report

Company:	EnCana Oil & Gas (USA) Inc	Local Co-ordinate Reference:	Well NP MF11B-3 O04 696 (was 14A-3)
Project:	North Piceance	TVD Reference:	WELL @ 6044.0ft (Original Well Elev)
Reference Site:	O04 696 (3rd)	MD Reference:	WELL @ 6044.0ft (Original Well Elev)
Site Error:	0.0ft	North Reference:	True
Reference Well:	NP MF11B-3 O04 696 (was 14A-3)	Survey Calculation Method:	Minimum Curvature
Well Error:	0.0ft	Output errors are at	2.00 sigma
Reference Wellbore	DD	Database:	EDM 5000.1 US Multi Users DB
Reference Design:	Plan #2	Offset TVD Reference:	Offset Datum

Offset Design													Offset Site Error:		0.0 ft
Survey Program: 0-MWD													Offset Well Error:		0.0 ft
Reference		Offset		Semi Major Axis			Distance							Warning	
Measured Depth	Vertical Depth	Measured Depth	Vertical Depth	Reference	Offset	Highside Toolface	Offset Wellbore Centre +N/-S	+E/-W	Between Centres	Between Ellipses	Total Uncertainty Axis	Separation Factor			
(ft)	(ft)	(ft)	(ft)	(ft)	(ft)	(°)	(ft)	(ft)	(ft)	(ft)					
0.0	0.0	0.0	0.0	0.0	0.0	-141.87	-71.8	-56.4	91.3						
100.0	100.0	100.0	100.0	0.1	0.1	-141.87	-71.8	-56.4	91.3	91.1	0.27	335.437			
200.0	200.0	200.0	200.0	0.3	0.3	-141.87	-71.8	-56.4	91.3	90.7	0.62	146.989 CC, ES			
300.0	300.0	299.1	299.1	0.5	0.5	163.48	-73.7	-54.7	94.3	93.3	0.98	96.529 SF			

Anticollision Report

Company:	EnCana Oil & Gas (USA) Inc	Local Co-ordinate Reference:	Well NP MF11B-3 O04 696 (was 14A-3)
Project:	North Piceance	TVD Reference:	WELL @ 6044.0ft (Original Well Elev)
Reference Site:	O04 696 (3rd)	MD Reference:	WELL @ 6044.0ft (Original Well Elev)
Site Error:	0.0ft	North Reference:	True
Reference Well:	NP MF11B-3 O04 696 (was 14A-3)	Survey Calculation Method:	Minimum Curvature
Well Error:	0.0ft	Output errors are at	2.00 sigma
Reference Wellbore	DD	Database:	EDM 5000.1 US Multi Users DB
Reference Design:	Plan #2	Offset TVD Reference:	Offset Datum

Reference Depths are relative to WELL @ 6044.0ft (Original Well Elev)

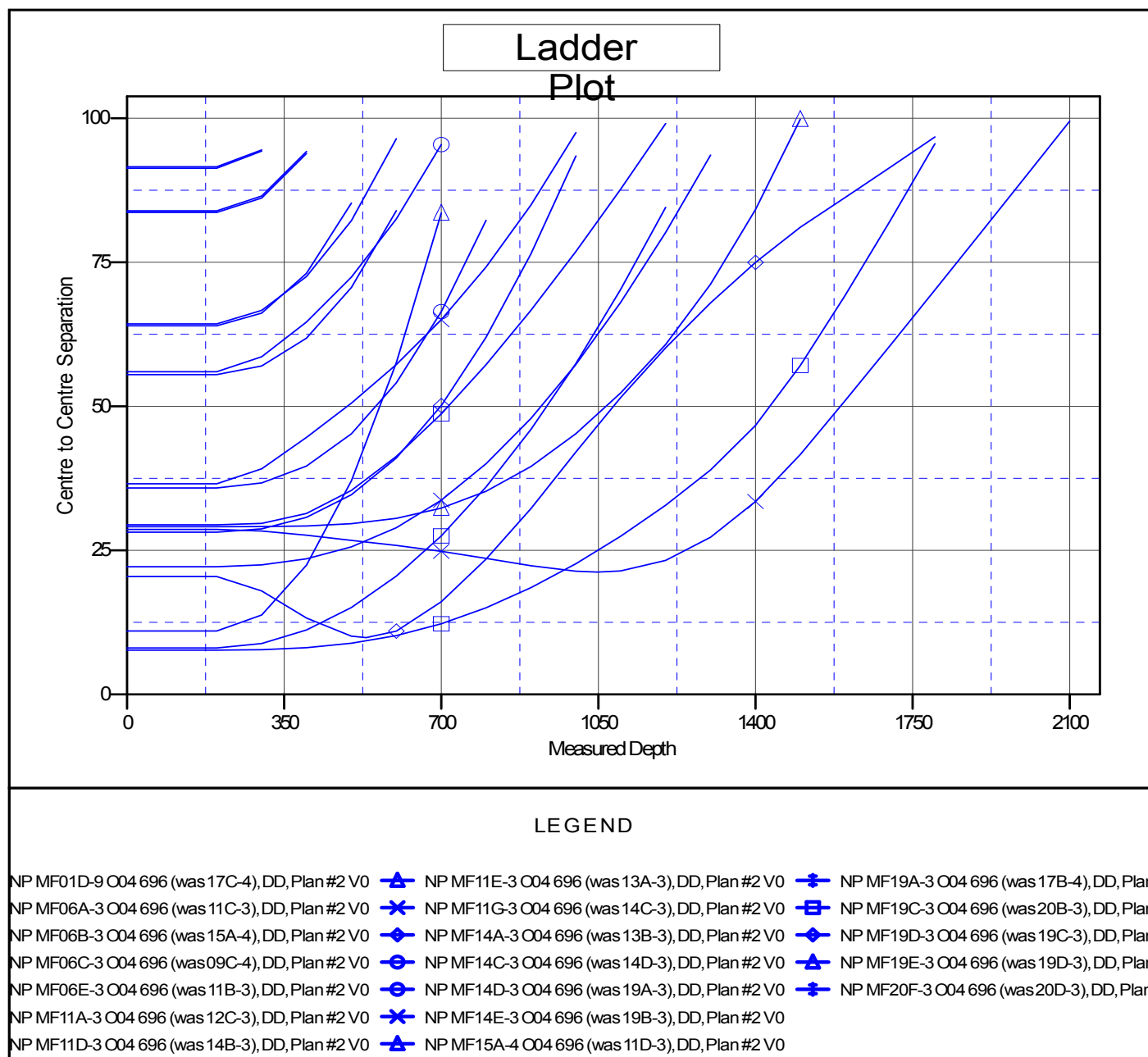
Offset Depths are relative to Offset Datum

Central Meridian is 105° 30' 0.00 W °

Coordinates are relative to: NP MF11B-3 O04 696 (was 14A-3)

Coordinate System is US State Plane 1983, Colorado Central Zone

Grid Convergence at Surface is: -1.64°



CC - Min centre to center distance or convergent point, SF - min separation factor, ES - min ellipse separation