

T6N, R87W, 6th P.M.

SWEPI LP

Alum. Cap,
0.3' Below Ground
RLS #16394
Lat: 40.455850°
Long: 107.162697°

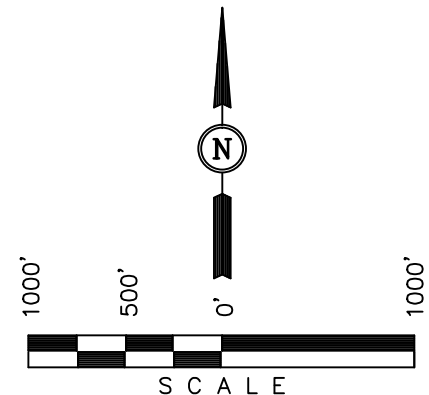
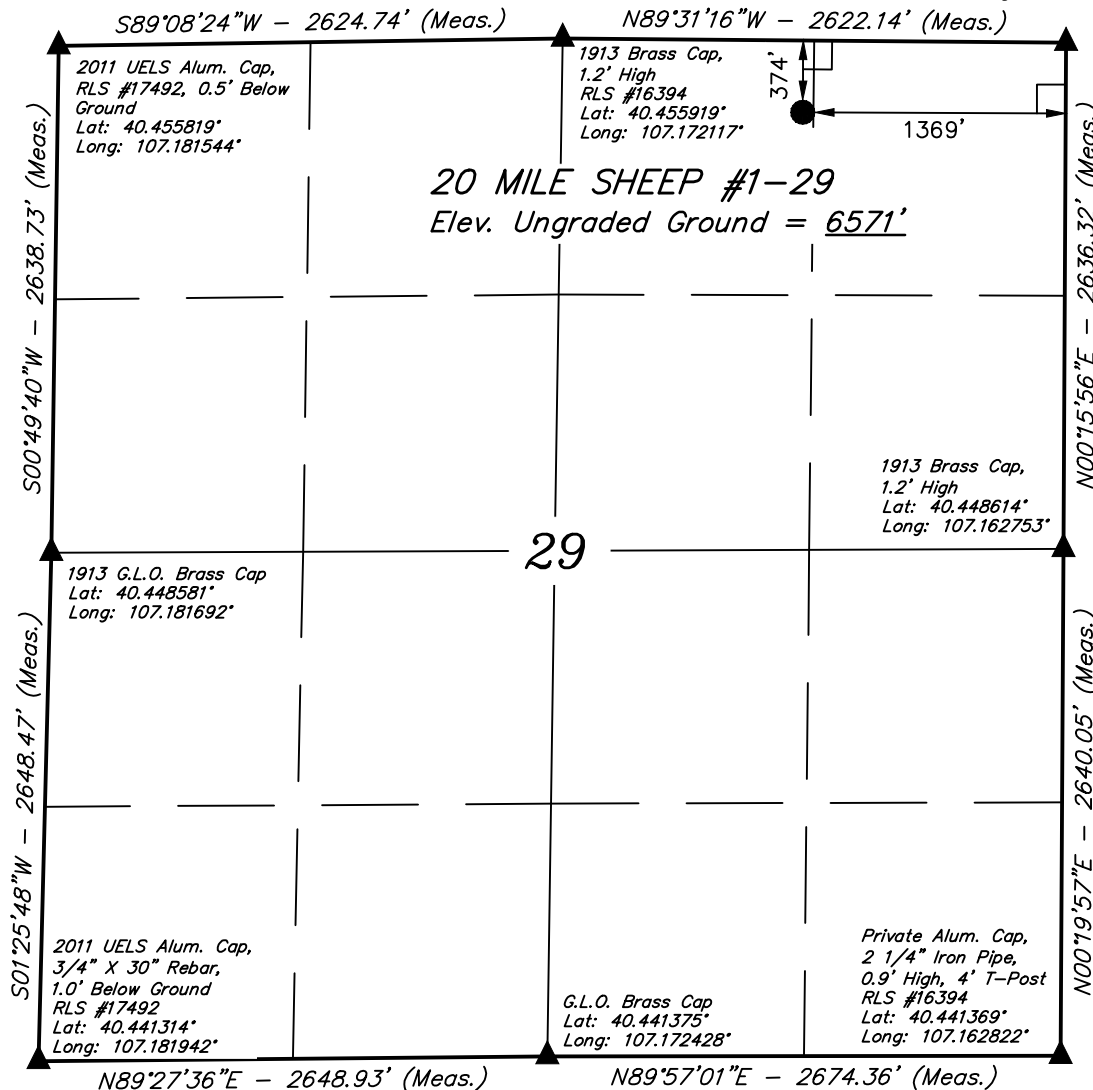
Well location, 20 MILE SHEEP #1-29, located as shown in the NW 1/4 NE 1/4 of Section 29, T6N, R87W, 6th P.M., Routt County, Colorado.

BASIS OF ELEVATION

SPOT ELEVATION AT A ROAD INTERSECTION LOCATED IN THE SOUTHWEST 1/4 OF SECTION 20, T6N, R88W, 6th P.M. TAKEN FROM THE HAYDEN, QUADRANGLE, COLORADO, 7.5 MINUTE SERIES (TOPOGRAPHIC MAP) PUBLISHED BY THE UNITED STATES DEPARTMENT OF THE INTERIOR, GEOLOGICAL SURVEY. SAID ELEVATION IS MARKED AS BEING 6445 FEET.

BASIS OF BEARINGS

BASIS OF BEARINGS IS A G.P.S. OBSERVATION.



CERTIFICATE

THIS IS TO CERTIFY THAT THE ABOVE PLAT WAS PREPARED FROM FIELD NOTES OF ACTUAL SURVEYS MADE BY ME OR UNDER MY SUPERVISION AND THAT THE SAME ARE TRUE AND CORRECT TO THE BEST OF MY KNOWLEDGE AND BELIEF.

REGISTERED LAND SURVEYOR
REGISTRATION NO. 17492
STATE OF COLORADO

REVISED: 06-03-13 T.B.

UINTAH ENGINEERING & LAND SURVEYING
85 SOUTH 200 EAST - VERNAL, UTAH 84078
(435) 789-1017

LEGEND:

- └─┘ = 90° SYMBOL
- = PROPOSED WELL HEAD.
- ▲ = SECTION CORNERS LOCATED.

PDOP = 1.8

NAD 83 (SURFACE LOCATION)
 LATITUDE = 40°27'17.50" (40.454861)
 LONGITUDE = 107°10'03.45" (107.167625)
NAD 27 (SURFACE LOCATION)
 LATITUDE = 40°27'17.64" (40.454900)
 LONGITUDE = 107°10'01.26" (107.167017)

SCALE 1" = 1000'	DATE SURVEYED: 05-09-13	DATE DRAWN: 05-22-13
PARTY G.M. A.H. T.B.	REFERENCES G.L.O. PLAT	
WEATHER COOL	FILE SWEPI LP	