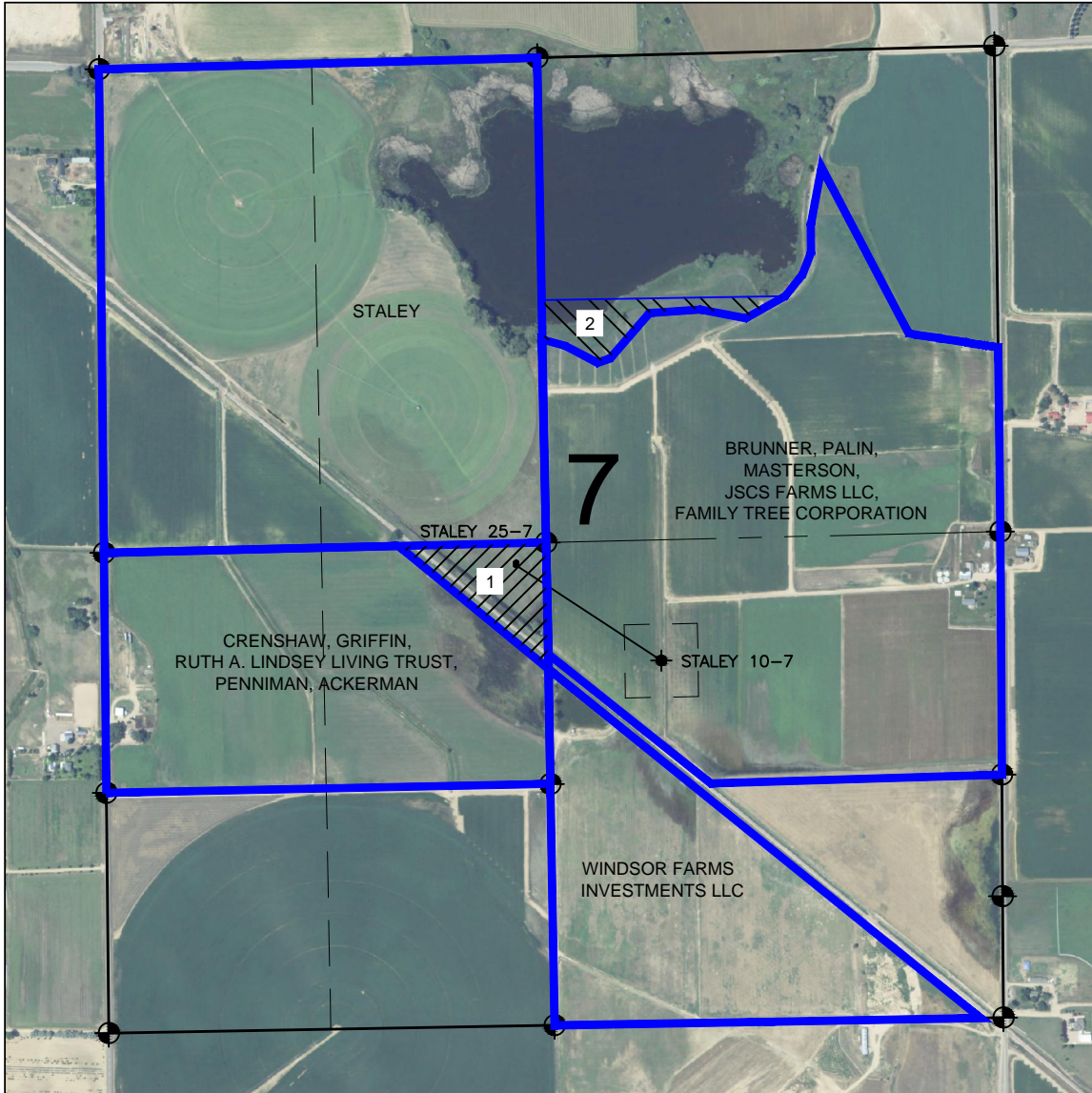


# LEASE DRAWING: STALEY 7-J PAD



## OIL AND GAS LESSORS

- 1 STALEY, CRENSHAW, GRIFFIN,  
RUTH A. LINDSEY LIVING TRUST,  
PENNIMAN, ACKERMAN
- 2 LAKE CANAL RESERVOIR CO.

## LEGEND

- = EXISTING MONUMENT    
 = BOTTOM HOLE    
 BH= BOTTOM HOLE  
 = PROPOSED WELL    
 = EXISTING WELL

## NOTES:

STALEY 25-7 TO BE AT 2532' FSL, 2252' FWL.  
 STALEY 10-7 TO BE AT 2517' FSL, 2252' FWL.  
 BOTTOM HOLE AT 1982' FSL & 1856' FEL.

PREPARED BY:



BAYSWATER EXPLORATION & PRODUCTION, LLC

FIELD DATE:  
04-24-13

DRAWING DATE:  
07-08-13

BY:  
KAD

PAD NAME:  
STALEY 7-J PAD

SURFACE LOCATION:  
NE 1/4 SW 1/4, SEC. 7, T6N, R67W, 6TH P.M.  
WELD COUNTY, COLORADO

