



**Bill Barrett Corporation**

## COMPANY DETAILS: BILL BARRETT CORP

Calculation Method: Minimum Curvature  
Error System: ISCWSA  
Scan Method: Closest Approach 3D  
Error Surface: Elliptical Conic  
Warning Method: Error Ratio

## REFERENCE INFORMATION

Co-ordinate (N/E) Reference: Well Anschutz State 5-62-27-0857BH, True North  
Vertical (TVD) Reference: KB @ 4685.0ft (Original Well Elev)  
Section (VS) Reference: Slot - (0.0N, 0.0E)  
Measured Depth Reference: KB @ 4685.0ft (Original Well Elev)  
Calculation Method: Minimum Curvature

## WELL DETAILS: Anschutz State 5-62-27-0857BH

+N/-S	+E/-W	Northing	Easting	Latitude	Longitude
0.0	0.0	1383189.52	3333780.01	40° 22' 44.641 N	104° 18' 6.790 W

## SECTION DETAILS

Sec	MD	Inc	Azi	TVD	+N/-S	+E/-W	DLeg	TFace	VSec	Target
1	0.0	0.00	0.00	0.0	0.0	0.0	0.00	0.00	0.0	
2	1000.0	0.00	0.00	1000.0	0.0	0.0	0.00	0.00	0.0	
3	1362.4	5.44	190.71	1361.9	-16.9	-3.2	1.50	190.71	16.9	
4	4878.0	5.44	190.71	4861.6	-344.1	-65.1	0.00	0.00	344.1	
5	5240.4	0.00	0.00	5223.5	-361.0	-68.3	1.50	180.00	361.0	
6	5740.4	0.00	0.00	5723.5	-361.0	-68.3	0.00	0.00	361.0	
7	6490.9	90.06	179.16	6201.0	-838.9	-61.3	12.00	179.16	838.9	27-0857BH LP
8	10774.8	90.06	179.16	6196.5	-5122.4	1.8	0.00	0.00	5122.4	27-0857BH PBHL

## PROJECT DETAILS: WELD COUNTY, COLORADO

Geodetic System: US State Plane 1983  
Datum: North American Datum 1983  
Ellipsoid: GRS 1980  
Zone: Colorado Northern Zone

## FORMATION TOP DETAILS

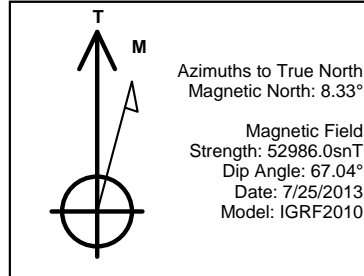
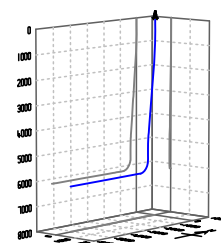
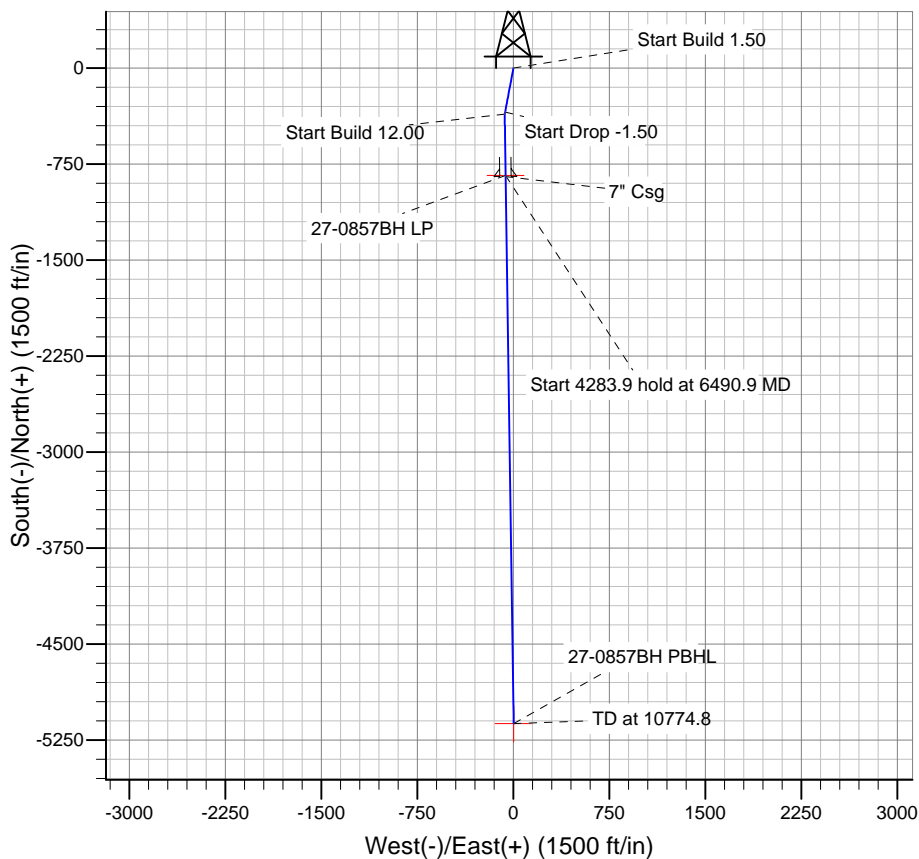
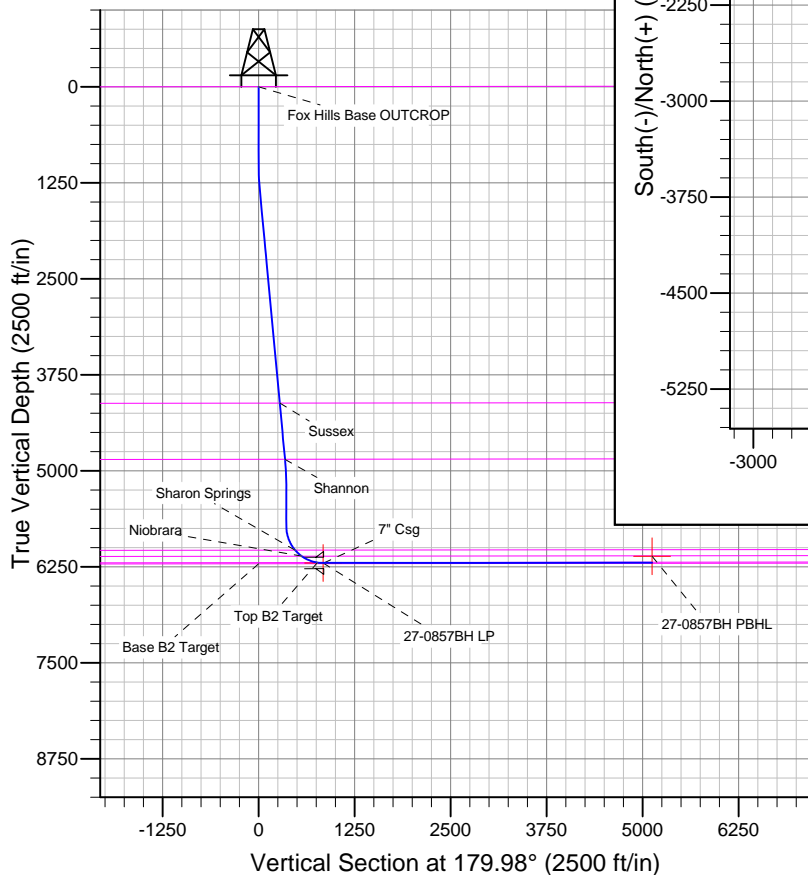
TVDPath	MDPath	Formation
		Base B2 Target
		Fox Hills Base OUTCROP
4118.7	4131.7	Sussex
4850.6	4866.9	Shannon
6034.5	6079.1	Sharon Springs
6112.4	6194.9	Niobrara
6195.2	6416.1	Top B2 Target

## CASING DETAILS

TVD	MD	Name	Size
6201.0	6500.0	7" Csg	7

## WELLBORE TARGET DETAILS

Name	TVD	+N/-S	+E/-W	Shape
27-0857BH PBHL	6113.0	-5122.4	1.4	Point
27-0857BH LP	6201.0	-839.0	-61.3	Point



# **BILL BARRETT CORP**

**WELD COUNTY, COLORADO**

**Anschutz State 5-62-27-0857BH**

**Anschutz State 5-62-27-0857BH**

**Wellbore #1**

**Plan: Design #1**

## **Standard Planning Report**

**25 July, 2013**

# Bill Barrett Corp

## Planning Report

<b>Database:</b>	Compass	<b>Local Co-ordinate Reference:</b>	Well Anschutz State 5-62-27-0857BH
<b>Company:</b>	BILL BARRETT CORP	<b>TVD Reference:</b>	KB @ 4685.0ft (Original Well Elev)
<b>Project:</b>	WELD COUNTY, COLORADO	<b>MD Reference:</b>	KB @ 4685.0ft (Original Well Elev)
<b>Site:</b>	Anschutz State 5-62-27-0857BH	<b>North Reference:</b>	True
<b>Well:</b>	Anschutz State 5-62-27-0857BH	<b>Survey Calculation Method:</b>	Minimum Curvature
<b>Wellbore:</b>	Wellbore #1		
<b>Design:</b>	Design #1		

<b>Project</b>	WELD COUNTY, COLORADO		
<b>Map System:</b>	US State Plane 1983	<b>System Datum:</b>	Mean Sea Level
<b>Geo Datum:</b>	North American Datum 1983		
<b>Map Zone:</b>	Colorado Northern Zone		

Site	Anschutz State 5-62-27-0857BH				
Site Position:		Northing:	1,383,189.52 ft	Latitude:	40° 22' 44.641 N
From:	Lat/Long	Easting:	3,333,780.01 ft	Longitude:	104° 18' 6.790 W
Position Uncertainty:	0.0 ft	Slot Radius:	"	Grid Convergence:	0.77 °

Well	Anschutz State 5-62-27-0857BH					
Well Position	+N-S	0.0 ft	Northing:	1,383,189.52 ft	Latitude:	40° 22' 44.641 N
	+E-W	0.0 ft	Easting:	3,333,780.01 ft	Longitude:	104° 18' 6.790 W
Position Uncertainty		0.0 ft	Wellhead Elevation:	ft	Ground Level:	4,665.0 ft

<b>Wellbore</b>	Wellbore #1				
<b>Magnetics</b>	<b>Model Name</b>	<b>Sample Date</b>	<b>Declination (°)</b>	<b>Dip Angle (°)</b>	<b>Field Strength (nT)</b>
	IGRF2010	7/25/2013	8.33	67.04	52,986

<b>Design</b>	Design #1			
<b>Audit Notes:</b>				
<b>Version:</b>	<b>Phase:</b>	PLAN	<b>Tie On Depth:</b>	0.0
<b>Vertical Section:</b>	<b>Depth From (TVD) (ft)</b>	<b>+N/-S (ft)</b>	<b>+E/-W (ft)</b>	<b>Direction (°)</b>
	0.0	0.0	0.0	179.98

<b>Plan Sections</b>										
Measured Depth (ft)	Inclination (°)	Azimuth (°)	Vertical Depth (ft)	+N/-S (ft)	+E/-W (ft)	Dogleg Rate (°/100ft)	Build Rate (°/100ft)	Turn Rate (°/100ft)	TFO (°)	Target
0.0	0.00	0.00	0.0	0.0	0.0	0.00	0.00	0.00	0.00	
1,000.0	0.00	0.00	1,000.0	0.0	0.0	0.00	0.00	0.00	0.00	
1,362.4	5.44	190.71	1,361.9	-16.9	-3.2	1.50	1.50	0.00	190.71	
4,878.0	5.44	190.71	4,861.6	-344.1	-65.1	0.00	0.00	0.00	0.00	
5,240.4	0.00	0.00	5,223.5	-361.0	-68.3	1.50	-1.50	0.00	180.00	
5,740.4	0.00	0.00	5,723.5	-361.0	-68.3	0.00	0.00	0.00	0.00	
6,490.9	90.06	179.16	6,201.0	-838.9	-61.3	12.00	12.00	0.00	179.16	27-0857BH LP
10,774.8	90.06	179.16	6,196.5	-5,122.4	1.8	0.00	0.00	0.00	0.00	27-0857BH PBHL

# Bill Barrett Corp

## Planning Report

<b>Database:</b>	Compass	<b>Local Co-ordinate Reference:</b>	Well Anschutz State 5-62-27-0857BH
<b>Company:</b>	BILL BARRETT CORP	<b>TVD Reference:</b>	KB @ 4685.0ft (Original Well Elev)
<b>Project:</b>	WELD COUNTY, COLORADO	<b>MD Reference:</b>	KB @ 4685.0ft (Original Well Elev)
<b>Site:</b>	Anschutz State 5-62-27-0857BH	<b>North Reference:</b>	True
<b>Well:</b>	Anschutz State 5-62-27-0857BH	<b>Survey Calculation Method:</b>	Minimum Curvature
<b>Wellbore:</b>	Wellbore #1		
<b>Design:</b>	Design #1		

Planned Survey									
Measured Depth (ft)	Inclination (°)	Azimuth (°)	Vertical Depth (ft)	+N/-S (ft)	+E/-W (ft)	Vertical Section (ft)	Dogleg Rate (°/100ft)	Build Rate (°/100ft)	Turn Rate (°/100ft)
0.0	0.00	0.00	0.0	0.0	0.0	0.0	0.00	0.00	0.00
100.0	0.00	0.00	100.0	0.0	0.0	0.0	0.00	0.00	0.00
200.0	0.00	0.00	200.0	0.0	0.0	0.0	0.00	0.00	0.00
300.0	0.00	0.00	300.0	0.0	0.0	0.0	0.00	0.00	0.00
400.0	0.00	0.00	400.0	0.0	0.0	0.0	0.00	0.00	0.00
500.0	0.00	0.00	500.0	0.0	0.0	0.0	0.00	0.00	0.00
600.0	0.00	0.00	600.0	0.0	0.0	0.0	0.00	0.00	0.00
700.0	0.00	0.00	700.0	0.0	0.0	0.0	0.00	0.00	0.00
800.0	0.00	0.00	800.0	0.0	0.0	0.0	0.00	0.00	0.00
900.0	0.00	0.00	900.0	0.0	0.0	0.0	0.00	0.00	0.00
1,000.0	0.00	0.00	1,000.0	0.0	0.0	0.0	0.00	0.00	0.00
1,100.0	1.50	190.71	1,100.0	-1.3	-0.2	1.3	1.50	1.50	0.00
1,200.0	3.00	190.71	1,199.9	-5.1	-1.0	5.1	1.50	1.50	0.00
1,300.0	4.50	190.71	1,299.7	-11.6	-2.2	11.6	1.50	1.50	0.00
1,362.4	5.44	190.71	1,361.9	-16.9	-3.2	16.9	1.50	1.50	0.00
1,400.0	5.44	190.71	1,399.3	-20.4	-3.9	20.4	0.00	0.00	0.00
1,500.0	5.44	190.71	1,498.8	-29.7	-5.6	29.7	0.00	0.00	0.00
1,600.0	5.44	190.71	1,598.4	-39.0	-7.4	39.0	0.00	0.00	0.00
1,700.0	5.44	190.71	1,697.9	-48.3	-9.1	48.3	0.00	0.00	0.00
1,800.0	5.44	190.71	1,797.5	-57.6	-10.9	57.6	0.00	0.00	0.00
1,900.0	5.44	190.71	1,897.0	-66.9	-12.7	66.9	0.00	0.00	0.00
2,000.0	5.44	190.71	1,996.6	-76.2	-14.4	76.2	0.00	0.00	0.00
2,100.0	5.44	190.71	2,096.1	-85.5	-16.2	85.5	0.00	0.00	0.00
2,200.0	5.44	190.71	2,195.7	-94.8	-17.9	94.8	0.00	0.00	0.00
2,300.0	5.44	190.71	2,295.2	-104.2	-19.7	104.1	0.00	0.00	0.00
2,400.0	5.44	190.71	2,394.8	-113.5	-21.5	113.5	0.00	0.00	0.00
2,500.0	5.44	190.71	2,494.3	-122.8	-23.2	122.8	0.00	0.00	0.00
2,600.0	5.44	190.71	2,593.9	-132.1	-25.0	132.1	0.00	0.00	0.00
2,700.0	5.44	190.71	2,693.4	-141.4	-26.7	141.4	0.00	0.00	0.00
2,800.0	5.44	190.71	2,793.0	-150.7	-28.5	150.7	0.00	0.00	0.00
2,900.0	5.44	190.71	2,892.5	-160.0	-30.3	160.0	0.00	0.00	0.00
3,000.0	5.44	190.71	2,992.1	-169.3	-32.0	169.3	0.00	0.00	0.00
3,100.0	5.44	190.71	3,091.6	-178.6	-33.8	178.6	0.00	0.00	0.00
3,200.0	5.44	190.71	3,191.2	-187.9	-35.6	187.9	0.00	0.00	0.00
3,300.0	5.44	190.71	3,290.7	-197.2	-37.3	197.2	0.00	0.00	0.00
3,400.0	5.44	190.71	3,390.3	-206.5	-39.1	206.5	0.00	0.00	0.00
3,500.0	5.44	190.71	3,489.8	-215.9	-40.8	215.8	0.00	0.00	0.00
3,600.0	5.44	190.71	3,589.4	-225.2	-42.6	225.1	0.00	0.00	0.00
3,700.0	5.44	190.71	3,688.9	-234.5	-44.4	234.5	0.00	0.00	0.00
3,800.0	5.44	190.71	3,788.5	-243.8	-46.1	243.8	0.00	0.00	0.00
3,900.0	5.44	190.71	3,888.0	-253.1	-47.9	253.1	0.00	0.00	0.00
4,000.0	5.44	190.71	3,987.6	-262.4	-49.6	262.4	0.00	0.00	0.00
4,100.0	5.44	190.71	4,087.1	-271.7	-51.4	271.7	0.00	0.00	0.00
4,131.7	5.44	190.71	4,118.7	-274.7	-52.0	274.6	0.00	0.00	0.00
<b>Sussex</b>									
4,200.0	5.44	190.71	4,186.7	-281.0	-53.2	281.0	0.00	0.00	0.00
4,300.0	5.44	190.71	4,286.2	-290.3	-54.9	290.3	0.00	0.00	0.00
4,400.0	5.44	190.71	4,385.8	-299.6	-56.7	299.6	0.00	0.00	0.00
4,500.0	5.44	190.71	4,485.3	-308.9	-58.4	308.9	0.00	0.00	0.00
4,600.0	5.44	190.71	4,584.9	-318.2	-60.2	318.2	0.00	0.00	0.00
4,700.0	5.44	190.71	4,684.4	-327.6	-62.0	327.5	0.00	0.00	0.00
4,800.0	5.44	190.71	4,784.0	-336.9	-63.7	336.8	0.00	0.00	0.00
4,866.9	5.44	190.71	4,850.6	-343.1	-64.9	343.1	0.00	0.00	0.00
<b>Shannon</b>									

# Bill Barrett Corp

## Planning Report

<b>Database:</b>	Compass	<b>Local Co-ordinate Reference:</b>	Well Anschutz State 5-62-27-0857BH
<b>Company:</b>	BILL BARRETT CORP	<b>TVD Reference:</b>	KB @ 4685.0ft (Original Well Elev)
<b>Project:</b>	WELD COUNTY, COLORADO	<b>MD Reference:</b>	KB @ 4685.0ft (Original Well Elev)
<b>Site:</b>	Anschutz State 5-62-27-0857BH	<b>North Reference:</b>	True
<b>Well:</b>	Anschutz State 5-62-27-0857BH	<b>Survey Calculation Method:</b>	Minimum Curvature
<b>Wellbore:</b>	Wellbore #1		
<b>Design:</b>	Design #1		

Planned Survey									
Measured Depth (ft)	Inclination (°)	Azimuth (°)	Vertical Depth (ft)	+N/-S (ft)	+E/-W (ft)	Vertical Section (ft)	Dogleg Rate (°/100ft)	Build Rate (°/100ft)	Turn Rate (°/100ft)
4,878.0	5.44	190.71	4,861.6	-344.1	-65.1	344.1	0.00	0.00	0.00
4,900.0	5.11	190.71	4,883.6	-346.1	-65.5	346.1	1.50	-1.50	0.00
5,000.0	3.61	190.71	4,983.3	-353.6	-66.9	353.5	1.50	-1.50	0.00
5,100.0	2.11	190.71	5,083.1	-358.5	-67.8	358.4	1.50	-1.50	0.00
5,200.0	0.61	190.71	5,183.1	-360.8	-68.3	360.8	1.50	-1.50	0.00
5,240.4	0.00	0.00	5,223.5	-361.0	-68.3	361.0	1.50	-1.50	0.00
5,300.0	0.00	0.00	5,283.1	-361.0	-68.3	361.0	0.00	0.00	0.00
5,400.0	0.00	0.00	5,383.1	-361.0	-68.3	361.0	0.00	0.00	0.00
5,500.0	0.00	0.00	5,483.1	-361.0	-68.3	361.0	0.00	0.00	0.00
5,600.0	0.00	0.00	5,583.1	-361.0	-68.3	361.0	0.00	0.00	0.00
5,700.0	0.00	0.00	5,683.1	-361.0	-68.3	361.0	0.00	0.00	0.00
5,740.4	0.00	0.00	5,723.5	-361.0	-68.3	361.0	0.00	0.00	0.00
5,800.0	7.15	179.16	5,782.9	-364.7	-68.2	364.7	12.00	12.00	0.00
5,900.0	19.15	179.16	5,880.1	-387.4	-67.9	387.4	12.00	12.00	0.00
6,000.0	31.15	179.16	5,970.5	-429.8	-67.3	429.8	12.00	12.00	0.00
6,079.1	40.64	179.16	6,034.5	-476.2	-66.6	476.1	12.00	12.00	0.00
Sharon Springs									
6,100.0	43.15	179.16	6,050.1	-490.1	-66.4	490.1	12.00	12.00	0.00
6,194.9	54.54	179.16	6,112.4	-561.5	-65.3	561.4	12.00	12.00	0.00
Niobrara									
6,200.0	55.15	179.16	6,115.3	-565.6	-65.3	565.6	12.00	12.00	0.00
6,300.0	67.15	179.16	6,163.5	-653.0	-64.0	653.0	12.00	12.00	0.00
6,400.0	79.15	179.16	6,192.4	-748.6	-62.6	748.5	12.00	12.00	0.00
6,416.1	81.09	179.16	6,195.2	-764.4	-62.4	764.4	12.00	12.00	0.00
Top B2 Target									
6,490.9	90.06	179.16	6,201.0	-838.9	-61.3	838.9	12.00	12.00	0.00
6,491.0	90.06	179.16	6,201.0	-839.0	-61.3	839.0	0.00	0.00	0.00
27-0857BH LP									
6,500.0	90.06	179.16	6,201.0	-848.0	-61.1	848.0	0.00	0.00	0.00
7" Csg									
6,600.0	90.06	179.16	6,200.9	-948.0	-59.7	948.0	0.00	0.00	0.00
6,700.0	90.06	179.16	6,200.7	-1,048.0	-58.2	1,048.0	0.00	0.00	0.00
6,800.0	90.06	179.16	6,200.6	-1,148.0	-56.7	1,148.0	0.00	0.00	0.00
6,900.0	90.06	179.16	6,200.5	-1,248.0	-55.2	1,248.0	0.00	0.00	0.00
7,000.0	90.06	179.16	6,200.4	-1,348.0	-53.8	1,347.9	0.00	0.00	0.00
7,100.0	90.06	179.16	6,200.3	-1,447.9	-52.3	1,447.9	0.00	0.00	0.00
7,200.0	90.06	179.16	6,200.2	-1,547.9	-50.8	1,547.9	0.00	0.00	0.00
7,300.0	90.06	179.16	6,200.1	-1,647.9	-49.4	1,647.9	0.00	0.00	0.00
7,400.0	90.06	179.16	6,200.0	-1,747.9	-47.9	1,747.9	0.00	0.00	0.00
7,500.0	90.06	179.16	6,199.9	-1,847.9	-46.4	1,847.9	0.00	0.00	0.00
7,600.0	90.06	179.16	6,199.8	-1,947.9	-44.9	1,947.9	0.00	0.00	0.00
7,700.0	90.06	179.16	6,199.7	-2,047.9	-43.5	2,047.9	0.00	0.00	0.00
7,800.0	90.06	179.16	6,199.6	-2,147.9	-42.0	2,147.9	0.00	0.00	0.00
7,900.0	90.06	179.16	6,199.5	-2,247.9	-40.5	2,247.8	0.00	0.00	0.00
8,000.0	90.06	179.16	6,199.4	-2,347.9	-39.0	2,347.8	0.00	0.00	0.00
8,100.0	90.06	179.16	6,199.3	-2,447.8	-37.6	2,447.8	0.00	0.00	0.00
8,200.0	90.06	179.16	6,199.2	-2,547.8	-36.1	2,547.8	0.00	0.00	0.00
8,300.0	90.06	179.16	6,199.1	-2,647.8	-34.6	2,647.8	0.00	0.00	0.00
8,400.0	90.06	179.16	6,199.0	-2,747.8	-33.2	2,747.8	0.00	0.00	0.00
8,500.0	90.06	179.16	6,198.9	-2,847.8	-31.7	2,847.8	0.00	0.00	0.00
8,600.0	90.06	179.16	6,198.8	-2,947.8	-30.2	2,947.8	0.00	0.00	0.00
8,700.0	90.06	179.16	6,198.7	-3,047.8	-28.7	3,047.8	0.00	0.00	0.00
8,800.0	90.06	179.16	6,198.5	-3,147.8	-27.3	3,147.8	0.00	0.00	0.00

# Bill Barrett Corp

## Planning Report

<b>Database:</b>	Compass	<b>Local Co-ordinate Reference:</b>	Well Anschutz State 5-62-27-0857BH
<b>Company:</b>	BILL BARRETT CORP	<b>TVD Reference:</b>	KB @ 4685.0ft (Original Well Elev)
<b>Project:</b>	WELD COUNTY, COLORADO	<b>MD Reference:</b>	KB @ 4685.0ft (Original Well Elev)
<b>Site:</b>	Anschutz State 5-62-27-0857BH	<b>North Reference:</b>	True
<b>Well:</b>	Anschutz State 5-62-27-0857BH	<b>Survey Calculation Method:</b>	Minimum Curvature
<b>Wellbore:</b>	Wellbore #1		
<b>Design:</b>	Design #1		

Planned Survey										
Measured Depth (ft)	Inclination (°)	Azimuth (°)	Vertical Depth (ft)	+N/-S (ft)	+E/-W (ft)	Vertical Section (ft)	Dogleg Rate (°/100ft)	Build Rate (°/100ft)	Turn Rate (°/100ft)	
8,900.0	90.06	179.16	6,198.4	-3,247.8	-25.8	3,247.7	0.00	0.00	0.00	
9,000.0	90.06	179.16	6,198.3	-3,347.7	-24.3	3,347.7	0.00	0.00	0.00	
9,100.0	90.06	179.16	6,198.2	-3,447.7	-22.9	3,447.7	0.00	0.00	0.00	
9,200.0	90.06	179.16	6,198.1	-3,547.7	-21.4	3,547.7	0.00	0.00	0.00	
9,300.0	90.06	179.16	6,198.0	-3,647.7	-19.9	3,647.7	0.00	0.00	0.00	
9,400.0	90.06	179.16	6,197.9	-3,747.7	-18.4	3,747.7	0.00	0.00	0.00	
9,500.0	90.06	179.16	6,197.8	-3,847.7	-17.0	3,847.7	0.00	0.00	0.00	
9,600.0	90.06	179.16	6,197.7	-3,947.7	-15.5	3,947.7	0.00	0.00	0.00	
9,700.0	90.06	179.16	6,197.6	-4,047.7	-14.0	4,047.7	0.00	0.00	0.00	
9,800.0	90.06	179.16	6,197.5	-4,147.7	-12.5	4,147.6	0.00	0.00	0.00	
9,900.0	90.06	179.16	6,197.4	-4,247.6	-11.1	4,247.6	0.00	0.00	0.00	
10,000.0	90.06	179.16	6,197.3	-4,347.6	-9.6	4,347.6	0.00	0.00	0.00	
10,100.0	90.06	179.16	6,197.2	-4,447.6	-8.1	4,447.6	0.00	0.00	0.00	
10,200.0	90.06	179.16	6,197.1	-4,547.6	-6.7	4,547.6	0.00	0.00	0.00	
10,300.0	90.06	179.16	6,197.0	-4,647.6	-5.2	4,647.6	0.00	0.00	0.00	
10,400.0	90.06	179.16	6,196.9	-4,747.6	-3.7	4,747.6	0.00	0.00	0.00	
10,500.0	90.06	179.16	6,196.8	-4,847.6	-2.2	4,847.6	0.00	0.00	0.00	
10,600.0	90.06	179.16	6,196.7	-4,947.6	-0.8	4,947.6	0.00	0.00	0.00	
10,700.0	90.06	179.16	6,196.6	-5,047.6	0.7	5,047.6	0.00	0.00	0.00	
10,774.8	90.06	179.16	6,196.5	-5,122.4	1.8	5,122.4	0.00	0.00	0.00	
27-0857BH PBHL										

Casing Points					
Measured Depth (ft)	Vertical Depth (ft)	Name	Casing Diameter (")	Hole Diameter (")	
6,500.0	6,201.0	7" Csg	7	8-3/4	

Formations						
Measured Depth (ft)	Vertical Depth (ft)	Name	Lithology	Dip (°)	Dip Direction (°)	
	0.0	Fox Hills Base OUTCROP		-0.06	179.16	
4,131.7	4,119.0	Sussex		-0.06	179.16	
4,866.9	4,851.0	Shannon		-0.06	179.16	
6,079.1	6,035.0	Sharon Springs		-0.06	179.16	
6,194.9	6,113.0	Niobrara		-0.06	179.16	
6,416.1	6,196.0	Top B2 Target		-0.06	179.16	
	6,211.0	Base B2 Target		-0.06	179.16	