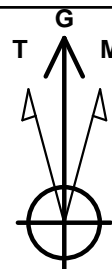
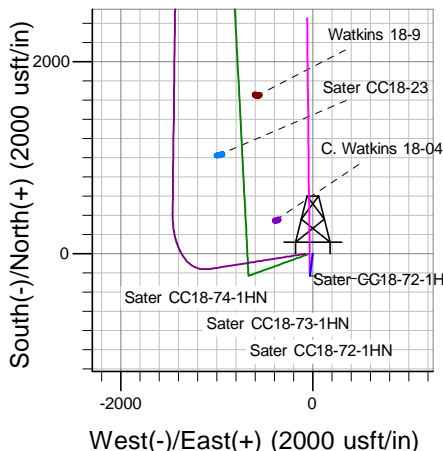
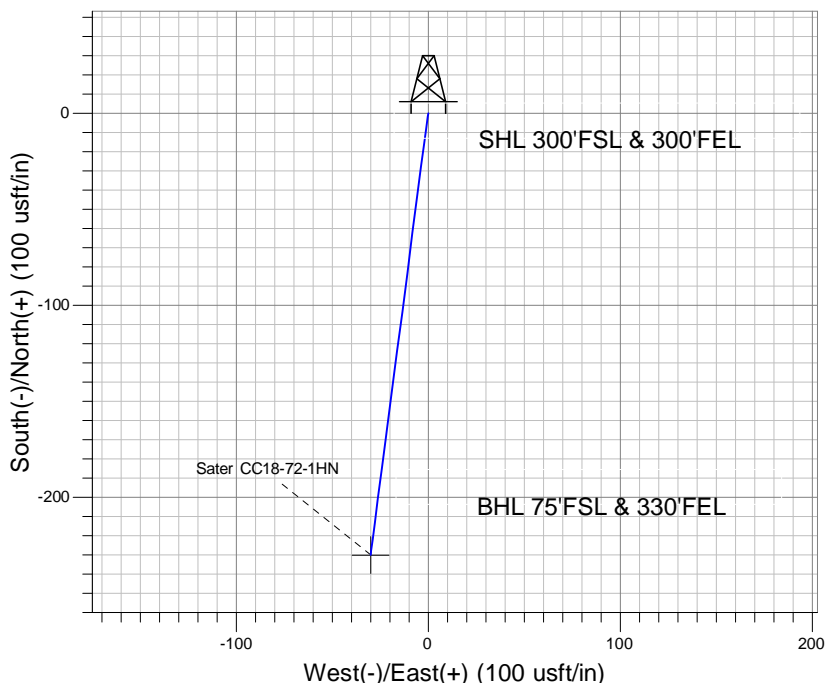
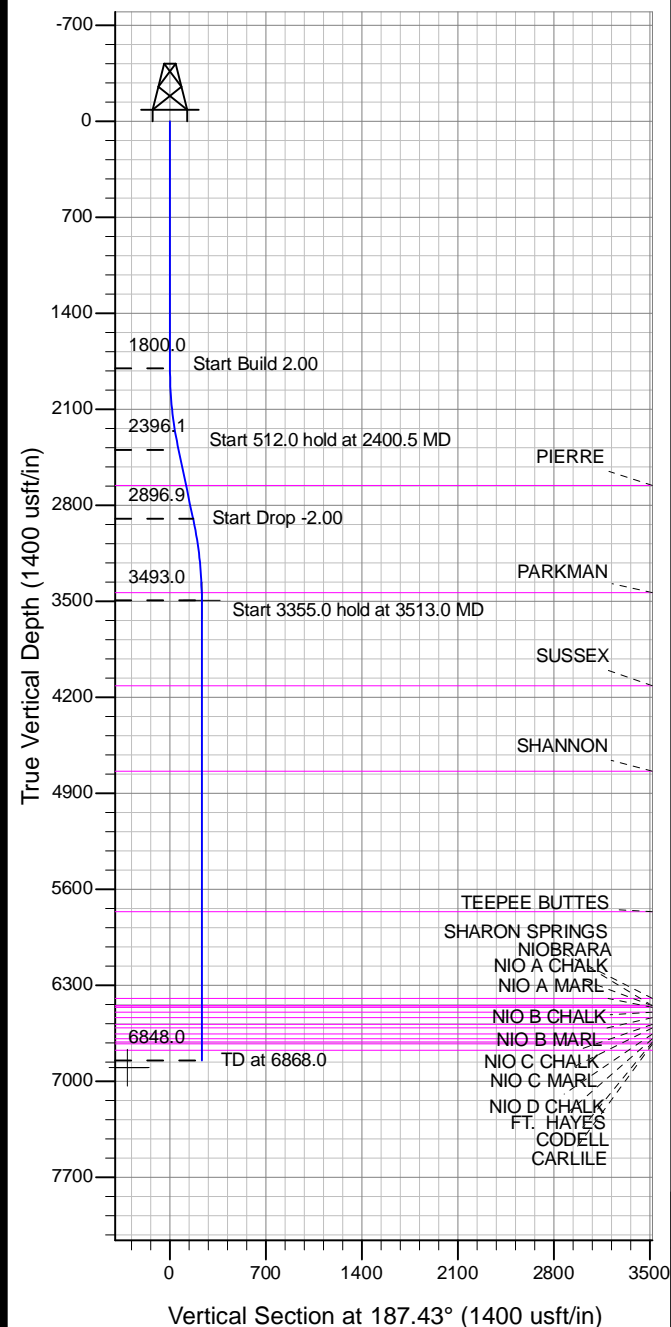


Project: Wattenberg Field
 Site: CC (Sec.18-T04N-R63W) Weld County, CO
 Well: Sater CC18-72-1HN
 Wellbore: Original Drilling
 Design: APD - Rev 2 (Pilot Hole)

Northern Region Drilling - Working

Geodetic System: US State Plane 1983
 Datum: North American Datum 1983
 Ellipsoid: GRS 1980
 Zone: Colorado Northern Zone
 System Datum: Mean Sea Level



Azimuths to Grid North
 True North: -0.66°
 Magnetic North: 7.72°
 Magnetic Field
 Strength: 52929.2snT
 Dip Angle: 66.96°
 Date: 6/13/2013
 Model: IGRF200510

Created by: Shailey Jewell

Date: 13:58, July 26 2013

**OK to submit with 2A as per noble
 Drilling 7/26/2013 2:28**

Well Details: Sater CC18-72-1HN

Ground Level: 4679.0	North	East	Lat	Long
	1355839.87	3286667.35	40.305620	-104.472120

WELLBORE TARGET DETAILS (LAT/LONG)

Name	TVD	+N/-S	+E/-W	Latitude	Longitude	Shape
Sater CC18-72-1HN PBHL 725'FSL, 330'FEL	3493.0	-230.0	-30.0	40.304990	-104.472237	

SECTION DETAILS

Sec	MD	Inc	Azi	TVD	+N/-S	+E/-W	Dleg	TFace	VSect	Target
1	0.0	0.00	0.00	0.0	0.0	0.0	0.00	0.00	0.0	
2	1800.0	0.00	0.00	1800.0	0.0	0.0	0.00	0.00	0.0	
3	2400.5	12.01	187.43	2396.1	-62.2	-8.1	2.00	187.43	62.7	
4	2912.5	12.01	187.43	2896.9	-167.8	-21.9	0.00	0.00	169.2	
5	3513.0	0.00	0.00	3493.0	-230.0	-30.0	2.00	180.00	231.9	Sater CC18-72-1HN PBHL 725'FSL, 330'FEL
6	6868.0	0.00	0.00	6848.0	-230.0	-30.0	0.00	0.00	231.9	