

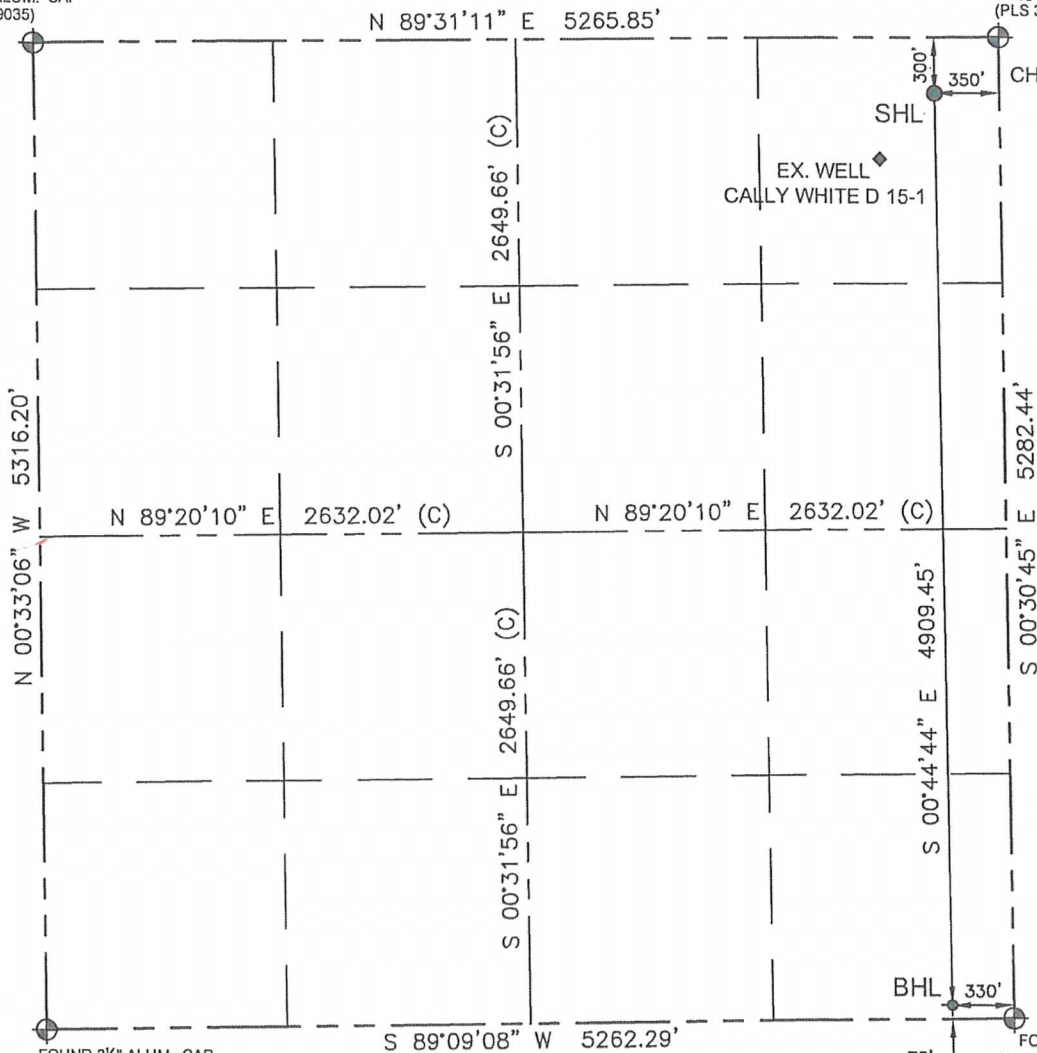
WELL LOCATION CERTIFICATE

THIS MAP DOES NOT REPRESENT A BOUNDARY SURVEY

SECTION: 15
TOWNSHIP: 3N
RANGE: 64W

FOUND 3/4" ALUM. CAP
(PLS 29035)

FOUND 2 1/2" ALUM. CAP
(PLS 32828)



CHANDLER STATE
D15-72-1HN
EL. 4786'

EX. WELL
CALLY WHITE D 15-1

BHL

FOUND
2 1/2" ALUM. CAP
(PLS 23501)

FOUND 3/4" ALUM. CAP
(PLS 37068)

In accordance with a request from Derrick Worden with Noble Energy Inc. Petroleum Field Services, LLC has determined the surface location of the CHANDLER STATE D15-72-1HN to be 300' from the NORTH line and 350' from the EAST line and the bottom hole to be 75' from the SOUTH line and 330' from the EAST line as measured at right angles from the section line of Section 15, Township 3 North, Range 64 West of the Sixth Principal Meridian, County of WELD, State of Colorado.

I hereby state that this Well Location Certificate was prepared by me, or under my direct supervision, that the fieldwork was completed on 5/29/13, for and on behalf of Noble Energy Inc., that this is not a Land Survey Plat or an Improvement Survey Plat, and that it is not to be relied upon for establishment of fence, building, or other future improvement lines.

SURFACE LOCATION:
LATITUDE: 40.23183 °N
LONGITUDE: 104.52909 °W
PDOP: 1.4
ELEV: 4786'
1/4 1/4: NE 1/4 NE 1/4
NEAREST PROPERTY LINE: 300' NORTH

BOTTOM HOLE:
LATITUDE: 40.21836 °N
LONGITUDE: 104.52905 °W

Notes:

- 1) Bearings shown are Grid Bearings of the Colorado State Plane Coordinate System, North Zone, North American Datum 1983/2007. The lineal dimensions as shown herein are grid distances based upon the "U.S. Survey Foot."
- 2) Ground elevations are based on an observed GPS elevation (NAVD 1988 DATUM).
- 3) NEAREST EXISTING WELL IN SECTION 15 IS: CALLY WHITE D 15-1, 465' SW
- 4) IMPROVEMENTS: See LOCATION DRAWING exhibit for all visible improvements within 400' of disturbed area.
- 5) SURFACE USE: RANGELAND
- 6) INSTRUMENT OPERATOR: BEN HARDENBERGH

Note:

According to Colorado law, you must commence any legal action based upon any defect in this W.L.C. within three years after you first discover such defect. In no event, may any action based upon any defect in this survey be commenced more than ten years after the date of this certification shown hereon. (13-80-105 C.R.S.)

LEGEND

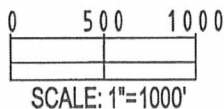
- ⊕ = FOUND MONUMENT
- = PROPOSED WELL
- ⬠ = BOTTOM HOLE
- ◆ = EXISTING WELL

BRADLEY L. LAMAN, PLS 38345
COLORADO LICENSED PROFESSIONAL LAND SURVEYOR
FOR AND ON BEHALF OF P.F.S., LLC

DRAWING
DATE:
07-17-13

DRAWN BY:
SMF

CHECKED BY:
TJN

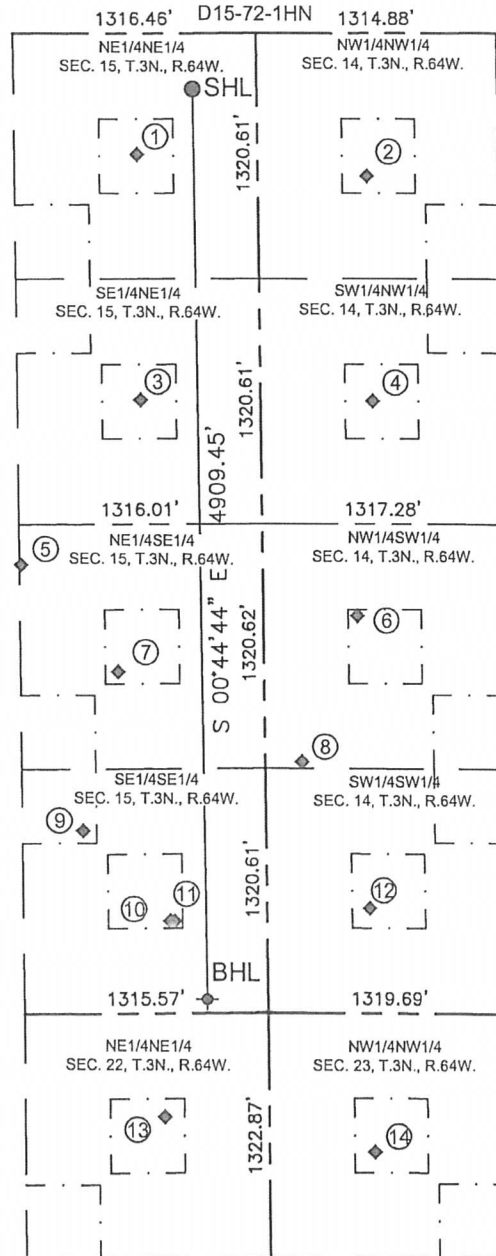


SITE SKETCH

SECTION: 15
TOWNSHIP: 3N
RANGE: 64W

CHANDLER STATE

- ① CALLY WHITE D 15-1
NE1/4NE1/4
651' FNL
655' FEL
LAT-40.23087°N
LONG-104.53018°W
PDOP: 1.4
ELEV: 4790'
- ② HSR-GUTTERSEN-STATE 4-14
NW1/4NW1/4
768' FNL
591' FWL
LAT-40.23053°N
LONG-104.52572°W
PDOP: 1.4
ELEV: 4781'
- ③ CALLY WHITE D 15-8
SE1/4NE1/4
1973' FNL
651' FEL
LAT-40.22724°N
LONG-104.53018°W
PDOP: 1.4
ELEV: 4791'
- ④ HSR-GUTTERSEN-STATE 5-14
SW1/4NW1/4
1981' FNL
607' FWL
LAT-40.22720°N
LONG-104.52568°W
PDOP: 1.4
ELEV: 4788'
- ⑤ GUTTERSEN D 15-22
NE1/4SE1/4
2431' FSL
1306' FEL
LAT-40.22481°N
LONG-104.53253°W
PDOP: 1.4
ELEV: 4805'
- ⑥ SPIKE STATE GWS D 14-12
NW1/4SW1/4
2149' FSL
508' FWL
LAT-40.22403°N
LONG-104.52604°W
PDOP: 1.4
ELEV: 4791'
- ⑦ CALLY BLUE D 15-9
NE1/4SE1/4
1849' FSL
790' FEL
LAT-40.22322°N
LONG-104.53069°W
PDOP: 1.4
ELEV: 4811'



- (8) GUTTERSEN STATE D 14-33
NW1/4SW1/4
1537' FSL
198' FWL
LAT-40.22187°N
LONG-104.52716°W
PDOP: 1.4
ELEV: 4819'
- (9) CALLY BLUE D 15-4J
SE1/4SE1/4
991' FSL
988' FEL
LAT-40.22086°N
LONG-104.53140°W
PDOP: 1.4
ELEV: 4811'
- (10) CHANDLER STATE D 23-79HNM
SE1/4SE1/4
500' FSL
523' FEL
LAT-40.21952°N
LONG-104.52974°W
PDOP: 1.4
ELEV: 4817'
- (11) GUTTERSEN D 23-69HN
SE1/4SE1/4
500' FSL
501' FEL
LAT-40.21952°N
LONG-104.52966°W
PDOP: 1.4
ELEV: 4817'
- (12) SPIKE STATE D 14-13
SW1/4SW1/4
568' FSL
556' FWL
LAT-40.21969°N
LONG-104.52588°W
PDOP: 1.4
ELEV: 4823'
- (13) SEVENDUST STATE D 22-1
NE1/4NE1/4
558' FNL
563' FEL
LAT-40.21662°N
LONG-104.52990°W
PDOP: 1.4
ELEV: 4830'
- (14) PARKER RED D 23-4
NW1/4NW1/4
747' FNL
570' FWL
LAT-40.21608°N
LONG-104.52585°W
PDOP: 1.4
ELEV: 4833'

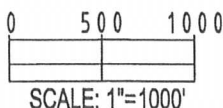


FIELD
DATE:
06-04-13

DRAWING
DATE:
07-23-13




DRAWN BY:
SMF

CHECKED BY:
XXX



SCALE: 1"=1000'

LEGEND

-  = PROPOSED WELL
 = BOTTOM HOLE
 = EXISTING WELL