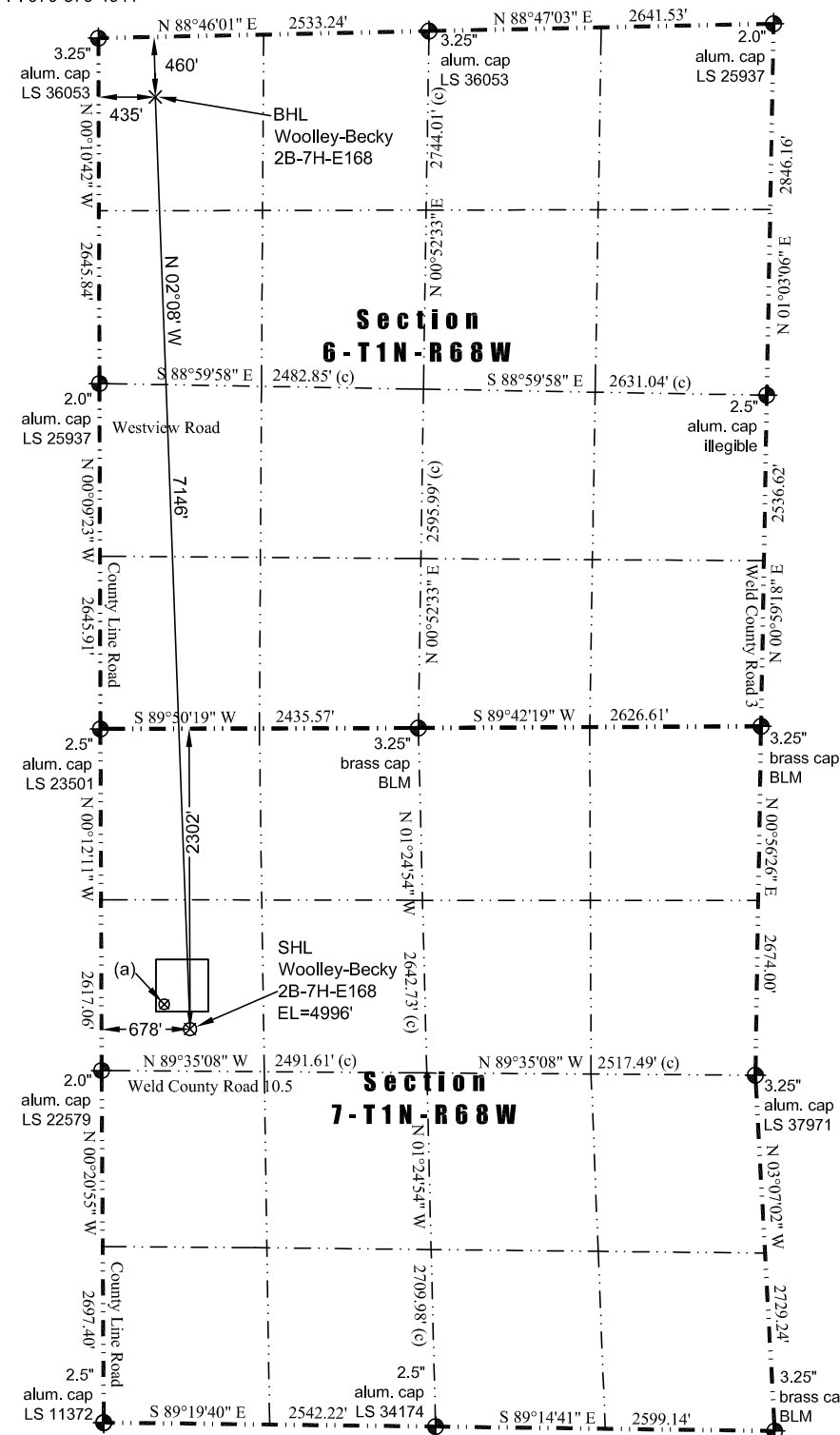



8114 Northstar Drive  
Windsor, Colorado 80528  
P. 970-576-4641

THIS MAP DOES NOT REPRESENT A BOUNDARY SURVEY



Scale 1" = 1400'



0 1400

approximate scale

 - found survey monument  
 (C) - calculated dimension

Woolley 12-7  
Latitude: N 40.06722°  
Longitude: W 105.05375°  
FNL: 2111'  
FWL: 481'  
ELEV: 4993'  
PDOP: 1.6

Building: 619' east  
Above Ground Utility: 304' southwest  
Public Road: 326' southwest  
Railroad: 4,125' southeast  
Property Line: 322' south  
Well Window: SHL is 134' outside  
Existing Well:  
Woolley 12-7, 274' northwest

Latitude: N 40.06669° (BHL: 40.08630°)  
Longitude: W 105.05304° (BHL: 105.05386°)  
PDOP: 2.5

- 1) Bearings and distances based on NAD 83 Colorado North State Plane Coordinate, using RTK GPS observations taken 5/22/13 by operator John Rice
- 2) Conversion factor to ground (1.0002793972).
- 3) Elevations based on NAVD 88 GPS heights and Geoid 2003 corrections.
- 4) See Location Drawing for visible improvements within 500 feet of Pad Site.
- 5) The surface use is a uncultivated field.

I hereby certify that this Well Location Certificate was prepared by me or under my direct supervision on 5/28/2013 for and on behalf of EnCana Oil & Gas (USA) Inc. That it is not a Land Survey Plat or an Improvement Survey Plat and that it is not to be relied upon for establishment of fences, buildings, or other future improvement lines.

John Robert McGehee LS#38219  
Well: Woolley-Becky 2B-7H-E168 WLC