



July 30, 2013

Mr. Matt Lepore, Director  
Colorado Oil and Gas Conservation Commission  
1120 Lincoln Street  
Suite 801  
Denver, Colorado 80203

1801 W. 13<sup>th</sup> Ave  
Denver, CO 80204  
Ph: 303.928.7128  
[www.petro-fs.com](http://www.petro-fs.com)

**RE: COGCC Rule 318A.a.: Exception Location Request**  
**Windsor LV 17-14 Windsor LV B-14H Windsor LV E-14**  
**Windsor LV 21-14 Windsor LV C-14 Windsor LV F-14**  
**Windsor LV A-14H Windsor LV D-14 Windsor LV G-14**  
**NENE Section 14, Township 6 North, Range 67 West**  
**Weld County, Colorado**

Dear Mr. Lepore:

Bayswater Exploration & Production, LLC (Bayswater) is planning to drill the above referenced wells to the Codell/Niobrara formations.

The surface locations of Bayswater's proposed wells have been staked outside of the COGCC Rule 318A.a. GWA Drilling Window and are being permitted as exception locations. Bayswater has obtained written permission from the surface owner by way of a signed waiver.

Bayswater respectfully requests the COGCC review the enclosed information and approve the requested exception location waiver and Application for Permit to drill for the subject wells. Many thanks.

Respectfully,

DeAnne M. Spector  
Regulatory Analyst  
Agent for Bayswater Exploration & Production, LLC

:dms

*We are what we repeatedly do. Excellence, then, is not an act, but a habit.*

*-Aristotle*

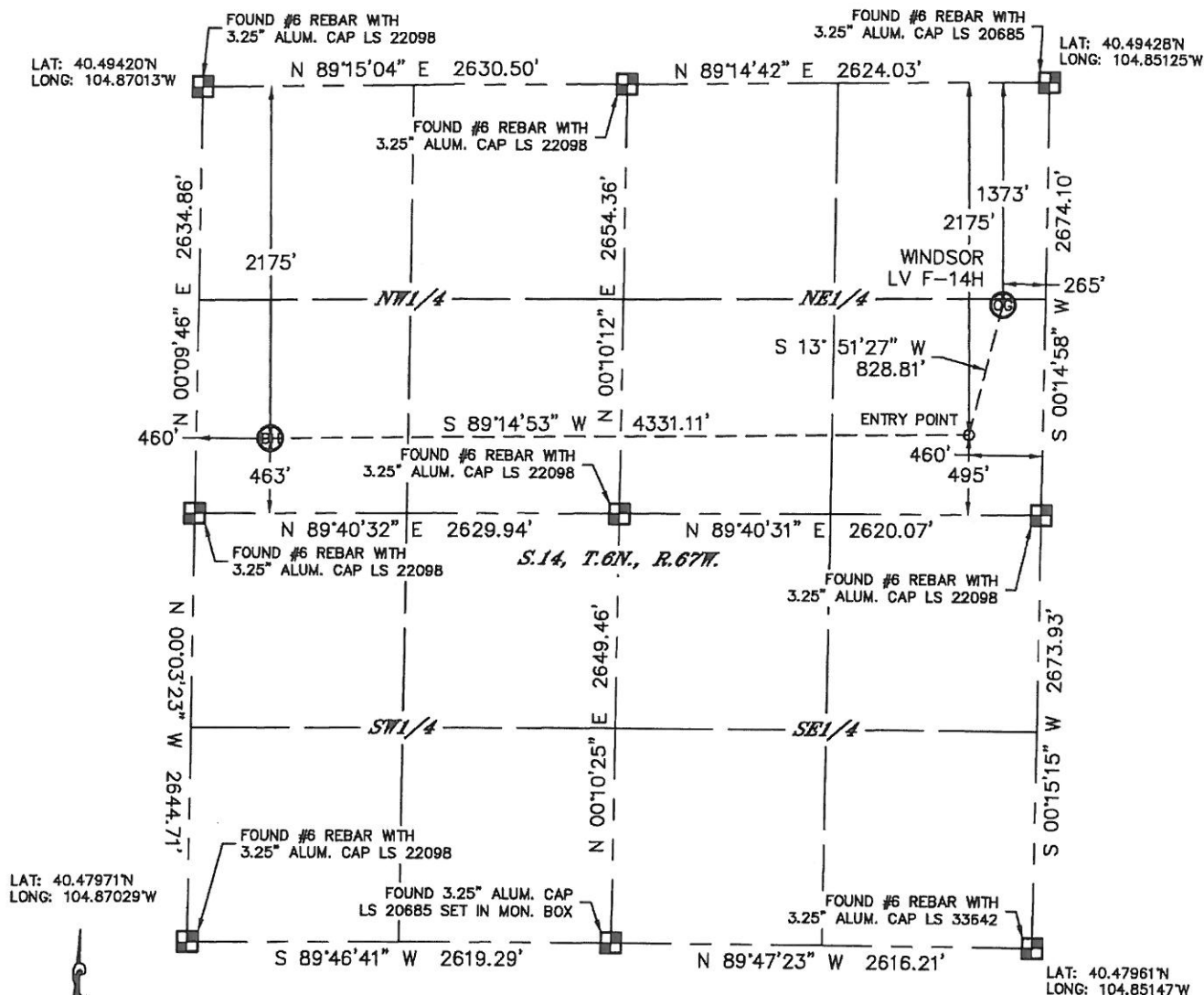


Lat40°, Inc. 1635 Foxtrail Drive, Suite 325 Loveland, CO 970-776-3321

# WELL LOCATION CERTIFICATE

THIS MAP DOES NOT REPRESENT A BOUNDARY SURVEY

SECTION: 14  
TOWNSHIP: 6N  
RANGE: 67W



In accordance with a request from Jesse White with APOLLO OPERATING, LLC, Lat40°, Inc. has determined the surface location of the WINDSOR LV F-14H to be 1373' from the NORTH line and 265' from the EAST line and the bottom hole to be 2175' from the NORTH line and 460' from the WEST line as measured at right angles from the section lines of Section 14, Township 6 North, Range 67 West of the Sixth Principal Meridian, County of Weld, State of Colorado.

I hereby state that this Well Location Certificate was prepared by me, or under my direct supervision, that the fieldwork was completed on 4/25/2013, for and on behalf of APOLLO OPERATING, LLC. That this is not a Land Survey Plat or an Improvement Survey Plat, and that it is not to be relied upon for establishment of fence, building, or other future improvement lines.

## NOTE:

- 1) Bearings shown are Grid Bearings of the Colorado State Plane Coordinate System, North Zone, North American Datum 1983/2007. The lineal dimensions as contained herein are based upon the "U.S. Survey Foot."
- 2) Ground elevations are based on an observed GPS elevation (NAVD 1988 DATUM).
- 3) IMPROVEMENTS: See LOCATION DRAWING for all visible improvements within 400' of disturbed area.
- 4) SURFACE USE: CROP LAND
- 5) INSTRUMENT OPERATOR: WYATT HALL

## SURFACE LOCATION

LAT: 40.49051°N  
LONG: 104.85226°W  
PDOP: 2.0  
ELEV: 4847'  
1/41/4: SE1/4NE1/4  
NEAREST PROPERTY LINE: 265' E

## ENTRY POINT

LAT: 40.48831°N  
LONG: 104.85299°W

## BOTTOM HOLE

LAT: 40.48824°N  
LONG: 104.85856°W

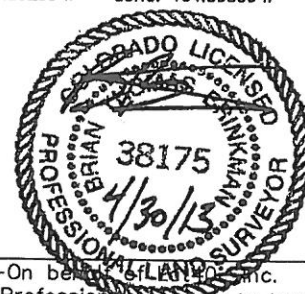
## NOTE

According to Colorado law, you must commence any legal action based upon any defect in this W.L.C. within three years after you discover such defect. In no event, may any action based upon any defect in this survey be commenced more than ten years after the date of the certificate shown hereon. (13-80-105 C.R.S.)

## LEGEND

- = ALIQUOT MONUMENT AS DESCRIBED  
○ = CALCULATED POSITION

Brian T. Brinkman—On behalf of Lat40°, Inc.  
Colorado Licensed Professional Land Surveyor No. 38175  
DATE: 4/26/2013  
PROJECT#: 2012076



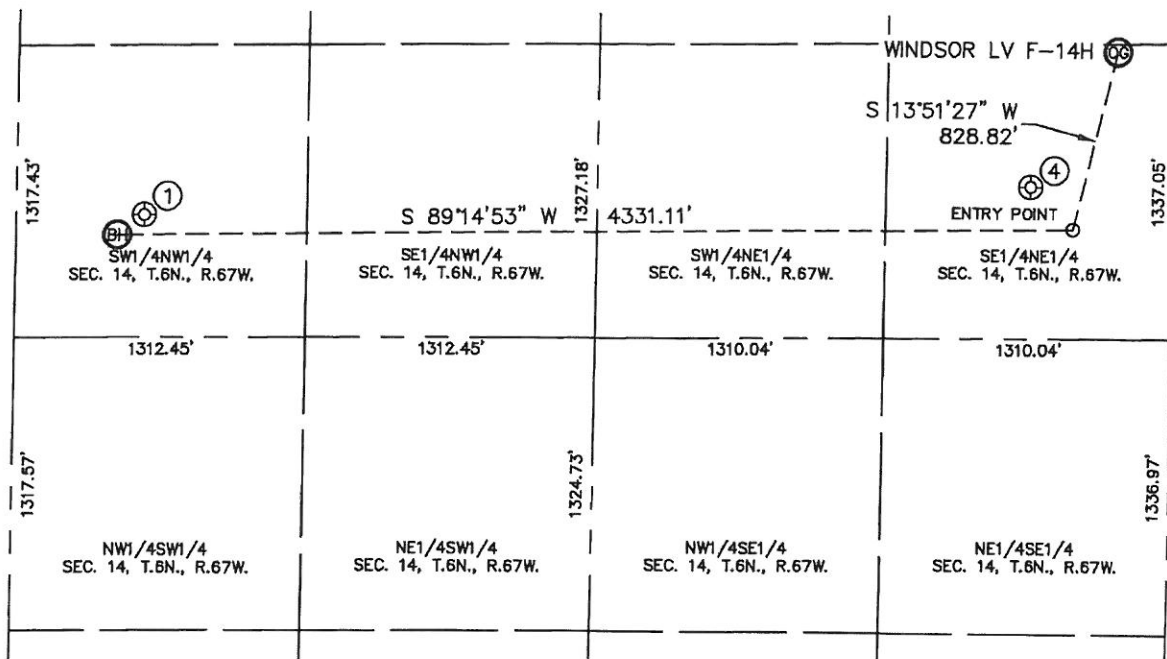


Lat40°, Inc. 1635 Foxtrail Drive, Suite 325 Loveland, CO 970-776-3321

# SITE SKETCH

WINDSOR LV F-14H

SECTION: 14  
TOWNSHIP: 6N  
RANGE: 67W



①  
WINTER 1  
SW1/4NW1/4  
2086' FNL  
582' FWL  
LAT-40.48848°N  
LONG-104.86812°W  
PDOP: 3.9  
ELEV: 4802'

④  
RUTZ #1 (COGCC)  
(Plugged & Abandoned)  
SE1/4NE1/4  
1982' FNL (COGCC)  
653' FEL (COGCC)  
LAT-40.48883°N (COGCC)  
LONG-104.85374°W (COGCC)  
PDOP: N/A  
ELEV: 4867' (COGCC)



0 800  
1"=800'

DATE: 4/26/2013  
PROJECT#: 2012076