

Location:	COLORADO	Slot:	SLOT#02 WILLOW BEND LD 18-23HC (336'FNL & 646'FEL SEC 18)
Field:	ADAMS COUNTY	Well:	WILLOW BEND LD 18-23HC
Facility:	SEC.18-T01S-R67W	Wellbore:	WILLOW BEND LD 18-23HC PWB

Location:	COLORADO	Slot:	SLOT#02 WILLOW BEND LD 18-23HC (336'FNL & 646'FEL SEC 18)
Field:	ADAMS COUNTY	Well:	WILLOW BEND LD 18-23HC
Facility:	SEC.18-T01S-R67W	Wellbore:	WILLOW BEND LD 18-23HC PWB

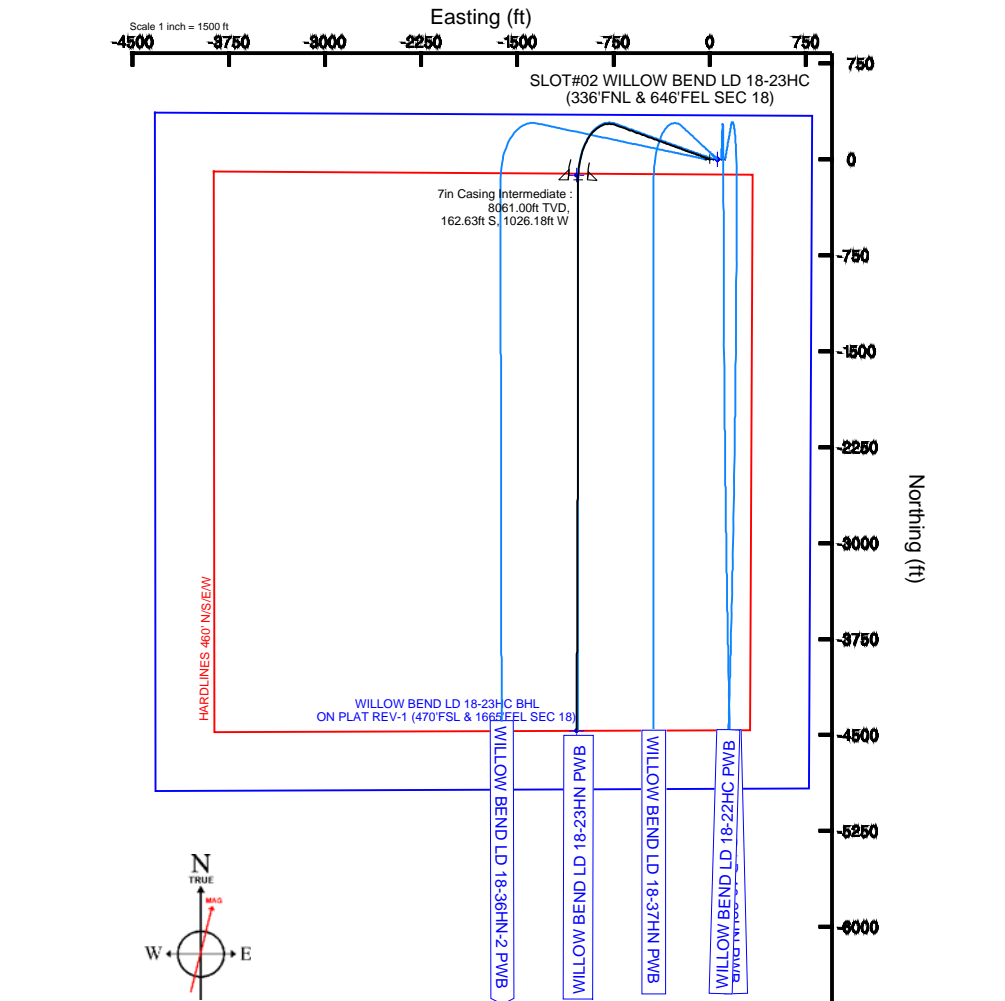
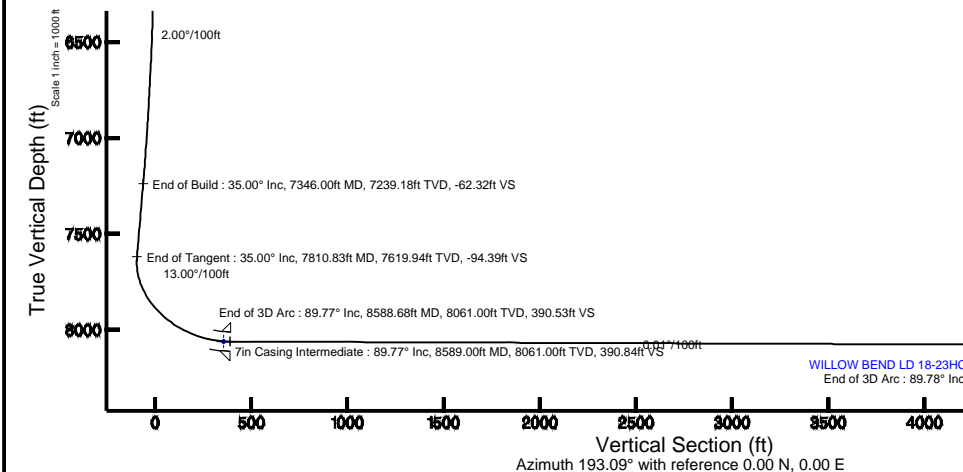
True vertical depths are referenced to Rig on SLOT#02 WILLOW BEND LD 18-23HC (336FNL & 646FEL SEC 18) (RKB)	Grid System: NAD83 / Lambert Colorado SP, Northern Zone (501), US feet
Measured depths are referenced to Rig on SLOT#02 WILLOW BEND LD 18-23HC (336FNL & 646FEL SEC 18) (RKB)	North Reference: True north
Rig on SLOT#02 WILLOW BEND LD 18-23HC (336FNL & 646FEL SEC 18) (RKB) to Mean Sea Level: 5247 feet	Scale: True distance
Mean Sea Level to Mud line (At Slot: SLOT#02 WILLOW BEND LD 18-23HC (336FNL & 646FEL SEC 18)): 0 feet	Depths are in feet
Coordinates are in feet referenced to Skot	Created by: wagnjam on 6/5/2013

Facility Name			Grid East (US 16)	Grid North (US 16)	Latitude	Longitude
SEC. 16-T01S-64E0W			3161318.875	1232702.566	39°58'15.4637N	104°10'27.8057W
Site	Local N (ft)	Local E (ft)	Grid East (US 16)	Grid North (US 16)	Latitude	Longitude
SLOT#02 WILLOW BEND LD 16-23HC (336FTN, 6.44FTEL SEC 16)	0.00	29.97	3161348.846	1232702.760	39°58'15.4637N	104°10'27.5207W
Rig on SLOT#02 WILLOW BEND LD 16-23HC (336FTN, 6.44FTEL SEC 16) (R06) to Mud line (4# Slot, SLOT#02 WILLOW BEND LD 16-23HC (336FTN, 6.44FTEL SEC 16))						S247N
Mean Sea Level to Mud line (4# Slot, SLOT#02 WILLOW BEND LD 16-23HC (336FTN, 6.44FTEL SEC 16))						0ft
Rig on SLOT#02 WILLOW BEND LD 16-23HC (336FTN, 6.44FTEL SEC 16) (R06) to Mean Sea Level						S247N

Start MD (ft)	End MD (ft)	Tool	Model	Log Name/Comment	Wellbore
16.00	5596.00	Generic gyro - continuous	Generic gyro - continuous (Standard)		WILLOW BEND LD 18-23HC PWB
5596.00	12892.52	NavitTrak	NavitTrak (Standard)		WILLOW BEND LD 18-23HC PWB

Name	MD (ft)	TVD (ft)	Local N (ft)	Local E (ft)	Grid East (US ft)	Grid North (US ft)	Latitude	Longitude
WILLOW BEND SECTION 18		0.00	-0.30	60.03	3161408.87	1232792.88	39°58'15.460"N	104°56'26.749"W
WILLOW BEND LD 18-23AC LANDING POINT (460FNL & 1665FEL SEC 18)		8061.00	-124.00	-1038.60	3160311.11	1232662.05	39°58'14.237"N	104°56'40.860"W
WILLOW BEND HARDLOUSE 460° N/E/W		8078.00	-0.30	60.03	3161408.87	1232792.88	39°58'15.460"N	104°56'26.749"W
WILLOW BEND LD 18-23AC B/LH ON PLAT REV-1 (470FSL & 1665FEL SEC 18)	12892.52	8078.00	-4468.09	-1038.60	3160339.30	1228320.20	39°57'31.327"N	104°56'40.858"W

Design Comment	MD (ft)	Inc (°)	Az (°)	TVD (ft)	Local N (ft)	Local E (ft)	DLS (°/100ft)	VS (ft)
Tie On	16.00	0.000	290.000	16.00	0.00	0.00	0.00	0.00
End of Tangent	5596.00	0.000	290.000	5596.00	0.00	0.00	0.00	0.00
End of Build	7346.00	35.000	290.000	7239.18	177.20	-486.85	2.00	-62.32
End of Tangent	7810.83	35.000	290.000	7619.94	268.38	-737.38	0.00	-94.39
End of 3D Arc	8588.68	89.770	180.000	8061.00	-162.31	-1026.18	13.00	390.53
End of 3D Arc	12892.52	89.777	180.331	8078.00	-4466.09	-1038.60	0.01	4585.26



To correct azimuth from Magnetic to True add 8.70 degrees

To correct azimuth from Magnetic to True add 8.70 degrees



# Planned Wellpath Report

WILLOW BEND LD 18-23HC REV-A.0 PWP

Page 1 of 5



REFERENCE WELLPATH IDENTIFICATION			
Operator	GREAT WESTERN OIL & GAS	Slot	SLOT#02 WILLOW BEND LD 18-23HC (336'FNL & 646'FEL SEC 18)
Area	COLORADO	Well	WILLOW BEND LD 18-23HC
Field	ADAMS COUNTY	Wellbore	WILLOW BEND LD 18-23HC PWB
Facility	SEC.18-T01S-R67W		

REPORT SETUP INFORMATION			
Projection System	NAD83 / Lambert Colorado SP, Northern Zone (501), US feet	Software System	WellArchitect® 4.0.0
North Reference	True	User	Wagnjam
Scale	0.999969	Report Generated	6/5/2013 at 11:10:52 AM
Convergence at slot	n/a	Database/Source file	WA_DENVER/WILLOW_BEND_LD_18-23HC_PWB.xml

WELLPATH LOCATION						
	Local coordinates		Grid coordinates		Geographic coordinates	
	North[ft]	East[ft]	Easting[US ft]	Northing[US ft]	Latitude	Longitude
Slot Location	0.00	29.97	3161348.85	1232792.79	39°58'15.463"N	104°55'27.520"W
Facility Reference Pt			3161318.88	1232792.60	39°58'15.463"N	104°55'27.905"W
Field Reference Pt			3161318.89	1232792.62	39°58'15.463"N	104°55'27.905"W

WELLPATH DATUM			
Calculation method	Minimum curvature	Rig on SLOT#02 WILLOW BEND LD 18-23HC (336'FNL & 646'FEL SEC 18) (RKB) to Facility Vertical Datum	5247.00ft
Horizontal Reference Pt	Slot	Rig on SLOT#02 WILLOW BEND LD 18-23HC (336'FNL & 646'FEL SEC 18) (RKB) to Mean Sea Level	5247.00ft
Vertical Reference Pt	Rig on SLOT#02 WILLOW BEND LD 18-23HC (336'FNL & 646'FEL SEC 18) (RKB)	Rig on SLOT#02 WILLOW BEND LD 18-23HC (336'FNL & 646'FEL SEC 18) (RKB) to Mud Line at Slot (SLOT#02 WILLOW BEND LD 18-23HC (336'FNL & 646'FEL SEC 18))	5247.00ft
MD Reference Pt	Rig on SLOT#02 WILLOW BEND LD 18-23HC (336'FNL & 646'FEL SEC 18) (RKB)	Section Origin	N 0.00, E 0.00 ft
Field Vertical Reference	Mean Sea Level	Section Azimuth	193.09°



# Planned Wellpath Report

## WILLOW BEND LD 18-23HC REV-A.0 PWP

Page 2 of 5



### REFERENCE WELLPATH IDENTIFICATION

Operator	GREAT WESTERN OIL & GAS	Slot	SLOT#02 WILLOW BEND LD 18-23HC (336'FNL & 646'FEL SEC 18)
Area	COLORADO	Well	WILLOW BEND LD 18-23HC
Field	ADAMS COUNTY	Wellbore	WILLOW BEND LD 18-23HC PWB
Facility	SEC.18-T01S-R67W		

### WELLPATH DATA (135 stations) † = interpolated/extrapolated station

MD [ft]	Inclination [°]	Azimuth [°]	TVD [ft]	Vert Sect [ft]	North [ft]	East [ft]	DLS [°/100ft]	Comments
0.00†	0.000	290.000	0.00	0.00	0.00	0.00	0.00	
16.00	0.000	290.000	16.00	0.00	0.00	0.00	0.00	Tie On
116.00†	0.000	290.000	116.00	0.00	0.00	0.00	0.00	
216.00†	0.000	290.000	216.00	0.00	0.00	0.00	0.00	
316.00†	0.000	290.000	316.00	0.00	0.00	0.00	0.00	
416.00†	0.000	290.000	416.00	0.00	0.00	0.00	0.00	
516.00†	0.000	290.000	516.00	0.00	0.00	0.00	0.00	
616.00†	0.000	290.000	616.00	0.00	0.00	0.00	0.00	
716.00†	0.000	290.000	716.00	0.00	0.00	0.00	0.00	
816.00†	0.000	290.000	816.00	0.00	0.00	0.00	0.00	
916.00†	0.000	290.000	916.00	0.00	0.00	0.00	0.00	
1016.00†	0.000	290.000	1016.00	0.00	0.00	0.00	0.00	
1116.00†	0.000	290.000	1116.00	0.00	0.00	0.00	0.00	
1216.00†	0.000	290.000	1216.00	0.00	0.00	0.00	0.00	
1316.00†	0.000	290.000	1316.00	0.00	0.00	0.00	0.00	
1416.00†	0.000	290.000	1416.00	0.00	0.00	0.00	0.00	
1516.00†	0.000	290.000	1516.00	0.00	0.00	0.00	0.00	
1616.00†	0.000	290.000	1616.00	0.00	0.00	0.00	0.00	
1716.00†	0.000	290.000	1716.00	0.00	0.00	0.00	0.00	
1816.00†	0.000	290.000	1816.00	0.00	0.00	0.00	0.00	
1916.00†	0.000	290.000	1916.00	0.00	0.00	0.00	0.00	
2016.00†	0.000	290.000	2016.00	0.00	0.00	0.00	0.00	
2116.00†	0.000	290.000	2116.00	0.00	0.00	0.00	0.00	
2216.00†	0.000	290.000	2216.00	0.00	0.00	0.00	0.00	
2316.00†	0.000	290.000	2316.00	0.00	0.00	0.00	0.00	
2416.00†	0.000	290.000	2416.00	0.00	0.00	0.00	0.00	
2516.00†	0.000	290.000	2516.00	0.00	0.00	0.00	0.00	
2616.00†	0.000	290.000	2616.00	0.00	0.00	0.00	0.00	
2716.00†	0.000	290.000	2716.00	0.00	0.00	0.00	0.00	
2816.00†	0.000	290.000	2816.00	0.00	0.00	0.00	0.00	
2916.00†	0.000	290.000	2916.00	0.00	0.00	0.00	0.00	
3016.00†	0.000	290.000	3016.00	0.00	0.00	0.00	0.00	
3116.00†	0.000	290.000	3116.00	0.00	0.00	0.00	0.00	
3216.00†	0.000	290.000	3216.00	0.00	0.00	0.00	0.00	
3316.00†	0.000	290.000	3316.00	0.00	0.00	0.00	0.00	
3416.00†	0.000	290.000	3416.00	0.00	0.00	0.00	0.00	
3516.00†	0.000	290.000	3516.00	0.00	0.00	0.00	0.00	
3616.00†	0.000	290.000	3616.00	0.00	0.00	0.00	0.00	
3716.00†	0.000	290.000	3716.00	0.00	0.00	0.00	0.00	
3816.00†	0.000	290.000	3816.00	0.00	0.00	0.00	0.00	
3916.00†	0.000	290.000	3916.00	0.00	0.00	0.00	0.00	
4016.00†	0.000	290.000	4016.00	0.00	0.00	0.00	0.00	
4116.00†	0.000	290.000	4116.00	0.00	0.00	0.00	0.00	
4216.00†	0.000	290.000	4216.00	0.00	0.00	0.00	0.00	
4316.00†	0.000	290.000	4316.00	0.00	0.00	0.00	0.00	



# Planned Wellpath Report

## WILLOW BEND LD 18-23HC REV-A.0 PWP

Page 3 of 5



### REFERENCE WELLPATH IDENTIFICATION

Operator	GREAT WESTERN OIL & GAS	Slot	SLOT#02 WILLOW BEND LD 18-23HC (336'FNL & 646'FEL SEC 18)
Area	COLORADO	Well	WILLOW BEND LD 18-23HC
Field	ADAMS COUNTY	Wellbore	WILLOW BEND LD 18-23HC PWB
Facility	SEC.18-T01S-R67W		

### WELLPATH DATA (135 stations) † = interpolated/extrapolated station

MD [ft]	Inclination [°]	Azimuth [°]	TVD [ft]	Vert Sect [ft]	North [ft]	East [ft]	DLS [°/100ft]	Comments
4416.00†	0.000	290.000	4416.00	0.00	0.00	0.00	0.00	
4516.00†	0.000	290.000	4516.00	0.00	0.00	0.00	0.00	
4616.00†	0.000	290.000	4616.00	0.00	0.00	0.00	0.00	
4716.00†	0.000	290.000	4716.00	0.00	0.00	0.00	0.00	
4816.00†	0.000	290.000	4816.00	0.00	0.00	0.00	0.00	
4916.00†	0.000	290.000	4916.00	0.00	0.00	0.00	0.00	
5016.00†	0.000	290.000	5016.00	0.00	0.00	0.00	0.00	
5116.00†	0.000	290.000	5116.00	0.00	0.00	0.00	0.00	
5216.00†	0.000	290.000	5216.00	0.00	0.00	0.00	0.00	
5316.00†	0.000	290.000	5316.00	0.00	0.00	0.00	0.00	
5416.00†	0.000	290.000	5416.00	0.00	0.00	0.00	0.00	
5516.00†	0.000	290.000	5516.00	0.00	0.00	0.00	0.00	
5596.00	0.000	290.000	5596.00	0.00	0.00	0.00	0.00	End of Tangent
5616.00†	0.400	290.000	5616.00	-0.01	0.02	-0.07	2.00	
5716.00†	2.400	290.000	5715.96	-0.30	0.86	-2.36	2.00	
5816.00†	4.400	290.000	5815.78	-1.02	2.89	-7.93	2.00	
5916.00†	6.400	290.000	5915.33	-2.15	6.11	-16.78	2.00	
6016.00†	8.400	290.000	6014.50	-3.70	10.51	-28.88	2.00	
6116.00†	10.400	290.000	6113.15	-5.66	16.10	-44.23	2.00	
6216.00†	12.400	290.000	6211.17	-8.04	22.86	-62.80	2.00	
6316.00†	14.400	290.000	6308.44	-10.83	30.78	-84.57	2.00	
6416.00†	16.400	290.000	6404.85	-14.02	39.86	-109.53	2.00	
6516.00†	18.400	290.000	6500.27	-17.62	50.09	-137.63	2.00	
6616.00†	20.400	290.000	6594.59	-21.61	61.45	-168.84	2.00	
6716.00†	22.400	290.000	6687.69	-26.00	73.93	-203.12	2.00	
6816.00†	24.400	290.000	6779.46	-30.78	87.51	-240.44	2.00	
6916.00†	26.400	290.000	6869.79	-35.94	102.18	-280.75	2.00	
7016.00†	28.400	290.000	6958.56	-41.47	117.92	-323.99	2.00	
7116.00†	30.400	290.000	7045.68	-47.38	134.71	-370.12	2.00	
7216.00†	32.400	290.000	7131.03	-53.64	152.53	-419.07	2.00	
7316.00†	34.400	290.000	7214.51	-60.26	171.36	-470.80	2.00	
7346.00	35.000	290.000	7239.18	-62.32	177.20	-486.85	2.00	End of Build
7416.00†	35.000	290.000	7296.52	-67.15	190.93	-524.58	0.00	
7516.00†	35.000	290.000	7378.43	-74.05	210.55	-578.47	0.00	
7616.00†	35.000	290.000	7460.35	-80.94	230.16	-632.37	0.00	
7716.00†	35.000	290.000	7542.26	-87.84	249.78	-686.27	0.00	
7810.83	35.000	290.000	7619.94	-94.39	268.38	-737.38	0.00	End of Tangent
7816.00†	34.812	288.872	7624.18	-94.71	269.37	-740.17	13.00	
7916.00†	33.387	265.710	7707.34	-89.35	276.58	-794.86	13.00	
8016.00†	36.283	243.411	7789.75	-62.12	261.21	-848.98	13.00	
8116.00†	42.615	225.449	7867.18	-14.42	224.06	-899.79	13.00	
8216.00†	51.097	211.886	7935.67	51.29	167.02	-944.66	13.00	
8316.00†	60.797	201.406	7991.71	131.66	93.03	-981.30	13.00	
8416.00†	71.168	192.804	8032.42	222.56	5.88	-1007.83	13.00	
8516.00†	81.886	185.226	8055.71	319.33	-89.98	-1022.89	13.00	



# Planned Wellpath Report

## WILLOW BEND LD 18-23HC REV-A.0 PWP

Page 4 of 5



### REFERENCE WELLPATH IDENTIFICATION

Operator	GREAT WESTERN OIL & GAS	Slot	SLOT#02 WILLOW BEND LD 18-23HC (336'FNL & 646'FEL SEC 18)
Area	COLORADO	Well	WILLOW BEND LD 18-23HC
Field	ADAMS COUNTY	Wellbore	WILLOW BEND LD 18-23HC PWB
Facility	SEC.18-T01S-R67W		

### WELLPATH DATA (135 stations) † = interpolated/extrapolated station

MD [ft]	Inclination [°]	Azimuth [°]	TVD [ft]	Vert Sect [ft]	North [ft]	East [ft]	DLS [°/100ft]	Comments
8588.68	89.770	180.000	8061.00 <sup>1</sup>	390.53	-162.31	-1026.18	13.00	End of 3D Arc
8616.00†	89.770	180.002	8061.11	417.13	-189.63	-1026.18	0.01	
8716.00†	89.770	180.010	8061.51	514.54	-289.63	-1026.19	0.01	
8816.00†	89.770	180.017	8061.91	611.94	-389.62	-1026.21	0.01	
8916.00†	89.771	180.025	8062.31	709.35	-489.62	-1026.25	0.01	
9016.00†	89.771	180.033	8062.71	806.76	-589.62	-1026.30	0.01	
9116.00†	89.771	180.041	8063.11	904.18	-689.62	-1026.36	0.01	
9216.00†	89.771	180.048	8063.51	1001.60	-789.62	-1026.44	0.01	
9316.00†	89.771	180.056	8063.91	1099.02	-889.62	-1026.53	0.01	
9416.00†	89.771	180.064	8064.31	1196.44	-989.62	-1026.63	0.01	
9516.00†	89.772	180.071	8064.71	1293.87	-1089.62	-1026.75	0.01	
9616.00†	89.772	180.079	8065.11	1391.30	-1189.62	-1026.88	0.01	
9716.00†	89.772	180.087	8065.51	1488.73	-1289.62	-1027.03	0.01	
9816.00†	89.772	180.094	8065.90	1586.16	-1389.62	-1027.19	0.01	
9916.00†	89.772	180.102	8066.30	1683.60	-1489.61	-1027.36	0.01	
10016.00†	89.772	180.110	8066.70	1781.05	-1589.61	-1027.54	0.01	
10116.00†	89.773	180.117	8067.10	1878.49	-1689.61	-1027.74	0.01	
10216.00†	89.773	180.125	8067.49	1975.94	-1789.61	-1027.95	0.01	
10316.00†	89.773	180.133	8067.89	2073.39	-1889.61	-1028.18	0.01	
10416.00†	89.773	180.140	8068.29	2170.84	-1989.61	-1028.42	0.01	
10516.00†	89.773	180.148	8068.68	2268.30	-2089.61	-1028.67	0.01	
10616.00†	89.773	180.156	8069.08	2365.76	-2189.61	-1028.93	0.01	
10716.00†	89.774	180.164	8069.47	2463.22	-2289.61	-1029.21	0.01	
10816.00†	89.774	180.171	8069.87	2560.69	-2389.61	-1029.50	0.01	
10916.00†	89.774	180.179	8070.26	2658.16	-2489.60	-1029.81	0.01	
11016.00†	89.774	180.187	8070.66	2755.63	-2589.60	-1030.13	0.01	
11116.00†	89.774	180.194	8071.05	2853.10	-2689.60	-1030.46	0.01	
11216.00†	89.774	180.202	8071.44	2950.58	-2789.60	-1030.81	0.01	
11316.00†	89.775	180.210	8071.84	3048.06	-2889.60	-1031.17	0.01	
11416.00†	89.775	180.217	8072.23	3145.55	-2989.60	-1031.54	0.01	
11516.00†	89.775	180.225	8072.62	3243.03	-3089.60	-1031.92	0.01	
11616.00†	89.775	180.233	8073.02	3340.52	-3189.59	-1032.32	0.01	
11716.00†	89.775	180.240	8073.41	3438.02	-3289.59	-1032.74	0.01	
11816.00†	89.776	180.248	8073.80	3535.51	-3389.59	-1033.16	0.01	
11916.00†	89.776	180.256	8074.19	3633.01	-3489.59	-1033.60	0.01	
12016.00†	89.776	180.263	8074.58	3730.51	-3589.59	-1034.06	0.01	
12116.00†	89.776	180.271	8074.97	3828.02	-3689.59	-1034.52	0.01	
12216.00†	89.776	180.279	8075.36	3925.53	-3789.58	-1035.00	0.01	
12316.00†	89.776	180.287	8075.75	4023.04	-3889.58	-1035.50	0.01	
12416.00†	89.777	180.294	8076.15	4120.55	-3989.58	-1036.00	0.01	
12516.00†	89.777	180.302	8076.53	4218.07	-4089.58	-1036.52	0.01	
12616.00†	89.777	180.310	8076.92	4315.59	-4189.58	-1037.06	0.01	
12716.00†	89.777	180.317	8077.31	4413.11	-4289.57	-1037.60	0.01	
12816.00†	89.777	180.325	8077.70	4510.63	-4389.57	-1038.16	0.01	
12892.52	89.777	180.331	8078.00 <sup>2</sup>	4585.26	-4466.09	-1038.60	0.01	End of 3D Arc



# Planned Wellpath Report

## WILLOW BEND LD 18-23HC REV-A.0 PWP

Page 5 of 5



### REFERENCE WELLPATH IDENTIFICATION

Operator	GREAT WESTERN OIL & GAS	Slot	SLOT#02 WILLOW BEND LD 18-23HC (336'FNL & 646'FEL SEC 18)
Area	COLORADO	Well	WILLOW BEND LD 18-23HC
Field	ADAMS COUNTY	Wellbore	WILLOW BEND LD 18-23HC PWB
Facility	SEC.18-T01S-R67W		

### HOLE & CASING SECTIONS -

Ref Wellbore: WILLOW BEND LD 18-23HC PWB

Ref Wellpath: WILLOW BEND LD 18-23HC REV-A.0 PWP

String/Diameter	Start MD [ft]	End MD [ft]	Interval [ft]	Start TVD [ft]	End TVD [ft]	Start N/S [ft]	Start E/W [ft]	End N/S [ft]	End E/W [ft]
12.25in Open Hole	16.00	1000.00	984.00	16.00	1000.00	0.00	0.00	0.00	0.00
9.625in Casing Surface	16.00	1000.00	984.00	16.00	1000.00	0.00	0.00	0.00	0.00
8.75in Open Hole	1000.00	8589.00	7589.00	1000.00	8061.00	0.00	0.00	-162.63	-1026.18
7in Casing Intermediate	16.00	8589.00	8573.00	16.00	8061.00	0.00	0.00	-162.63	-1026.18
6.125in Open Hole	8589.00	12892.00	4303.00	8061.00	8078.00	-162.63	-1026.18	-4465.57	-1038.60

### TARGETS

Name	MD [ft]	TVD [ft]	North [ft]	East [ft]	Grid East [US ft]	Grid North [US ft]	Latitude	Longitude	Shape
WILLOW BEND SECTION 18		0.00	-0.30	60.03	3161408.87	1232792.88	39°58'15.460"N	104°55'26.749"W	polygon
1) WILLOW BEND LD 18-23HC LANDING POINT (460'FNL & 1665'FEL SEC 18)		8061.00	-124.00	-1038.60	3160311.11	1232662.05	39°58'14.237"N	104°55'40.860"W	point
WILLOW BEND HARDLINES 460' N/S/E/W		8078.00	-0.30	60.03	3161408.87	1232792.88	39°58'15.460"N	104°55'26.749"W	polygon
2) WILLOW BEND LD 18-23HC BHL ON PLAT REV-1 (470'FSL & 1665'FEL SEC 18)	12892.52	8078.00	-4466.09	-1038.60	3160339.30	1228320.20	39°57'31.327"N	104°55'40.858"W	point

### SURVEY PROGRAM - Ref Wellbore: WILLOW BEND LD 18-23HC PWB Ref Wellpath: WILLOW BEND LD 18-23HC REV-A.0 PWP

Start MD [ft]	End MD [ft]	Positional Uncertainty Model	Log Name/Comment	Wellbore
16.00	5596.00	Generic gyro - continuous (Standard)		WILLOW BEND LD 18-23HC PWB
5596.00	12892.52	NaviTrak (Standard)		WILLOW BEND LD 18-23HC PWB