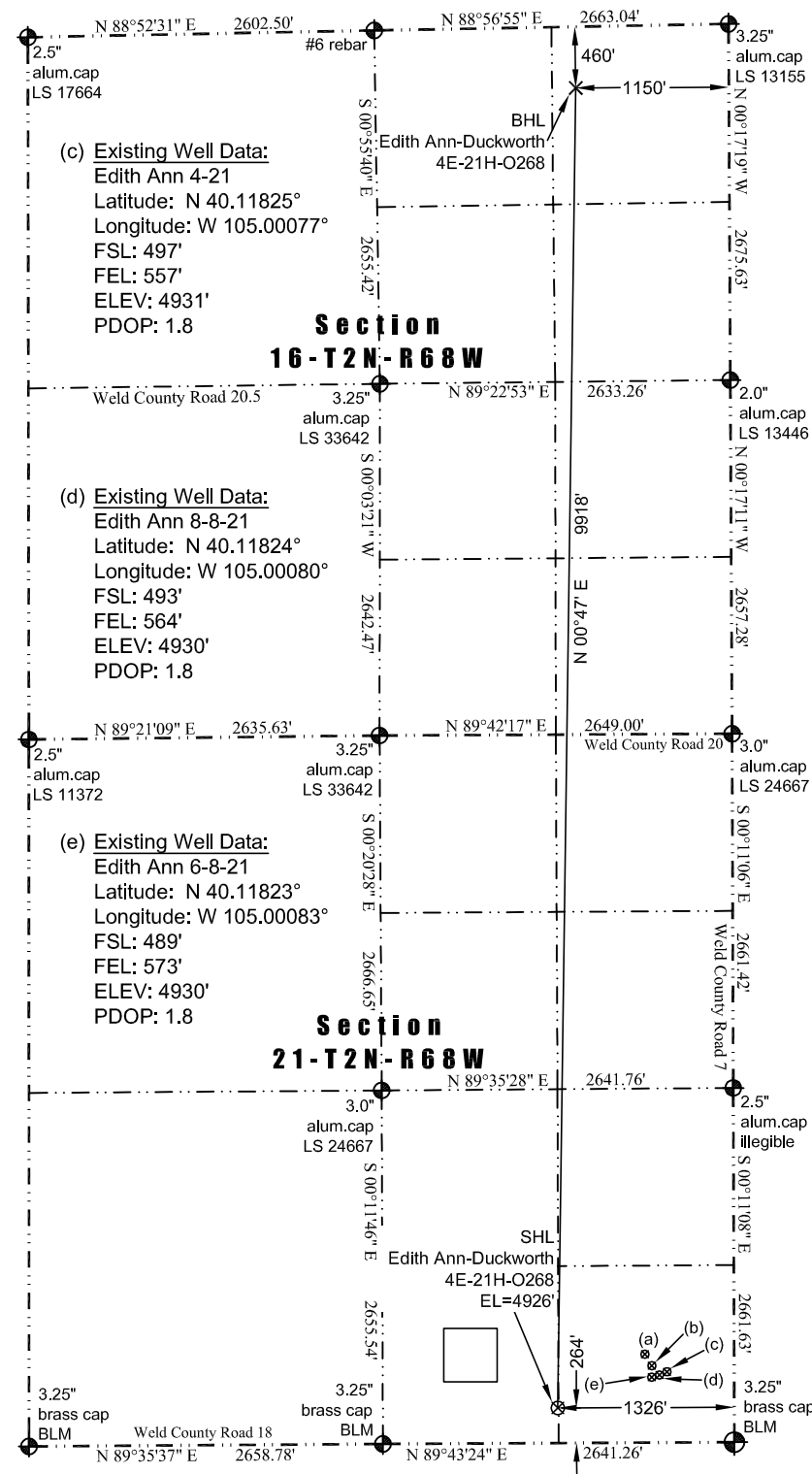


8114 Northstar Drive  
Windsor, Colorado 80528  
P. 970-576-4641

THIS MAP DOES NOT REPRESENT A BOUNDARY SURVEY



- 1) Bearings and distances based on NAD 83 Colorado North State Plane Coordinate. using RTK GPS observations taken 6/6/13 by operator John Rice
- 2) Conversion factor to ground (1.000285153).
- 3) Elevations based on NAVD 88 GPS heights and Geoid 2003 corrections.
- 4) See Location Drawing for visible improvements within 500 feet of Pad Site.
- 5) The surface use is a cultivated field.

**NOTICE:** According to Colorado law you must commence any legal action based upon any defect in this W.L.C. within three years after you first discover such defect. In no event may any action based upon any defect in this W.L.C. be commenced more than ten years from this said date of the certification shown hereon.

Scale 1" = 1400'

0 1400

approximate scale

⊕ - found survey monument  
 (C) - calculated dimension

Jillson 'A' #3  
Latitude: N 40.11867°  
Longitude: W 105.00115°  
FSL: 651'  
FEL: 661'  
ELEV: 4928'  
PDOP: 1.8

Edith Ann 44-21  
Latitude: N 40.11838°  
Longitude: W 105.00090°  
FSL: 544'  
FEL: 591'  
ELEV: 4930'  
PDOP: 1.8

Building: 460' southeast  
Above Ground Utility: 286' southwest  
Public Road: 250' south  
Railroad: 19,488' southwest  
Property Line: 264' south  
Well Window: SHL is 497' outside  
Existing Well:  
Jillson 'A' #3, 769' northeast

Latitude: N 40.11761° (BHL: 40.14483°)  
Longitude: W 105.00353° (BHL: 105.00284°)  
PDOP: 2.0

I hereby certify that this Well Location Certificate was prepared by me or under my direct supervision on 6/8/2013 and on behalf of EnCana Oil & Gas (USA) Inc. that it is not a Land Survey Plat or an Improvement Survey Plat and that it is not to be relied upon for establishment of fences, buildings, or other future improvement lines.

John Robert McGehee LS#38219  
Well: Edith Ann-Duckworth 4E-21H-O268 WLC