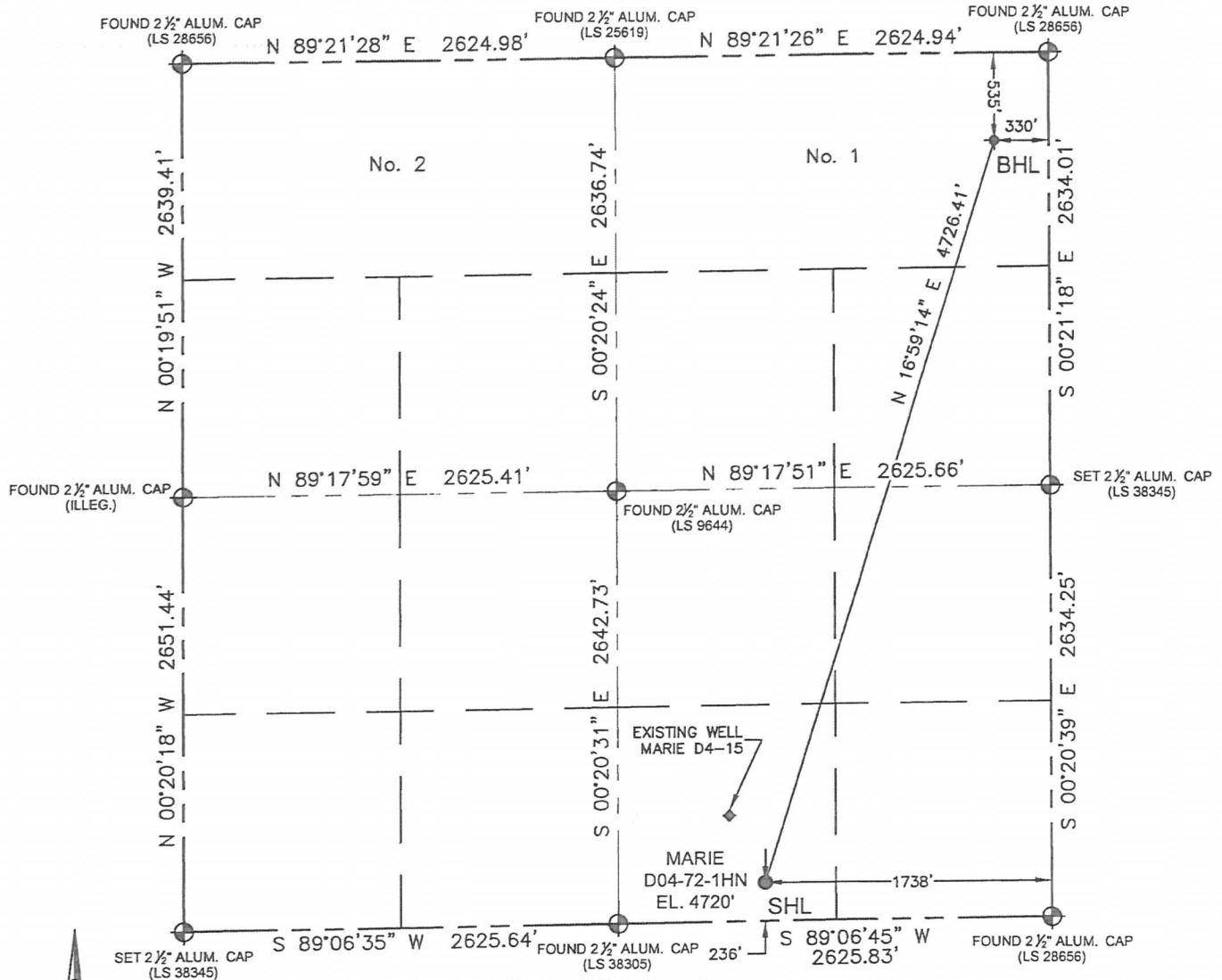


WELL LOCATION CERTIFICATE

THIS MAP DOES NOT REPRESENT A BOUNDARY SURVEY

SECTION: 4
TOWNSHIP: 3N
RANGE: 64W



In accordance with a request from Derrick Worden with Noble Energy Inc. Petroleum Field Services, LLC has determined the surface location of the MARIE D04-72-1HN to be 236' from the SOUTH line and 1738' from the EAST line and the bottom hole to be 535' from the NORTH line and 330' from the EAST line as measured at right angles from the section line of Section 4, Township 3 North, Range 64 West of the Sixth Principal Meridian, County of WELD, State of Colorado.

I hereby state that this Well Location Certificate was prepared by me, or under my direct supervision, that the fieldwork was completed on 6/11/13, for and on behalf of Noble Energy Inc., that this is not a Land Survey Plat or an Improvement Survey Plat, and that it is not to be relied upon for establishment of fence, building, or other future improvement lines.

SURFACE LOCATION:
LATITUDE: 40.24791 °N
LONGITUDE: 104.55286 °W
PDOP: 2.0
ELEV: 4720'
¼¼: SW¼ SE¼
NEAREST PROPERTY LINE: 172' North

BOTTOM HOLE:
LATITUDE: 40.26028 °N
LONGITUDE: 104.54774 °W

Notes:

- 1) Bearings shown are Grid Bearings of the Colorado State Plane Coordinate System, North Zone, North American Datum 1983/2007. The lineal dimensions as shown herein are grid distances based upon the "U.S. Survey Foot."
- 2) Ground elevations are based on an observed GPS elevation (NAVD 1988 DATUM).
- 3) NEAREST EXISTING WELL IN SECTION 4 IS: MARIE D 4-15, 462' NW
- 4) IMPROVEMENTS: See LOCATION DRAWING exhibit for all visible improvements within 400' of disturbed area.
- 5) SURFACE USE: DRY LAND CROP
- 6) INSTRUMENT OPERATOR: TOMMY BURDEN

Note:

According to Colorado law, you must commence any legal action based upon any defect in this W.L.C. within three years after you first discover such defect. In no event, may any action based upon any defect in this survey be commenced more than ten years after the date of this certification shown hereon. (13-80-105 C.R.S.)

LEGEND

- = FOUND MONUMENT
- = PROPOSED WELL
- ◆ = BOTTOM HOLE
- ◆ = EXISTING WELL

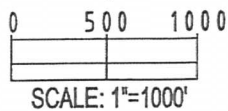


BRADLEY L. LAMAN, PLS 38345
COLORADO LICENSED PROFESSIONAL LAND SURVEYOR
FOR AND ON BEHALF OF P.F.S., LLC

DRAWING
DATE:
06-27-13

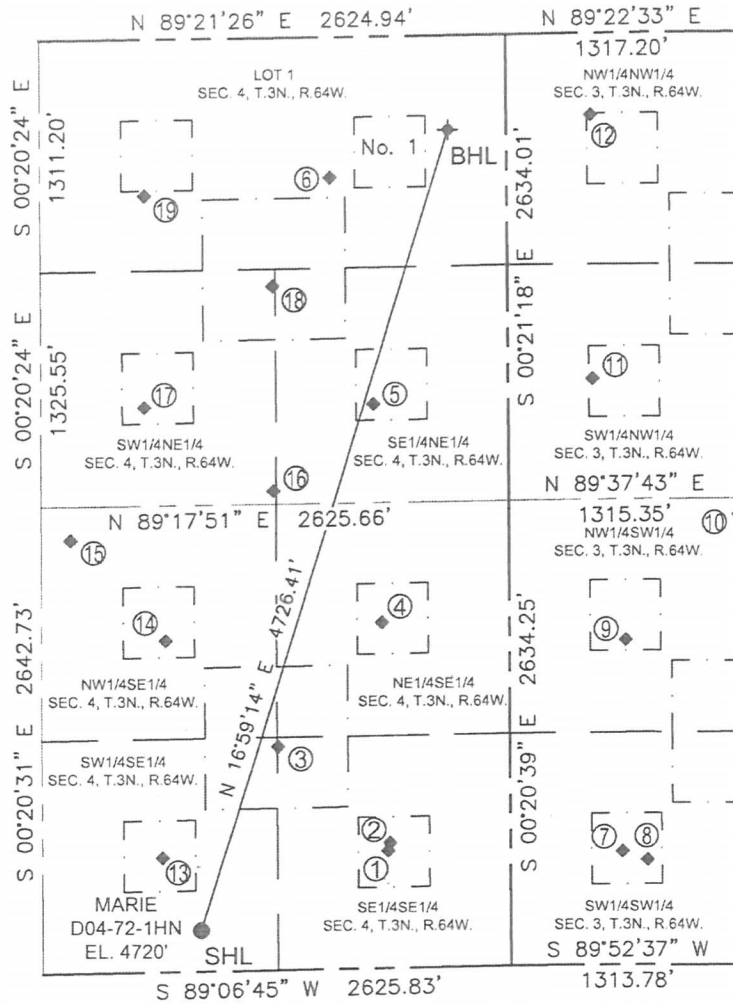
DRAWN BY:
CLM

CHECKED BY:
TJN



SITE SKETCH

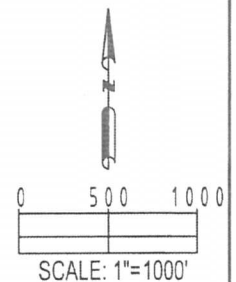
SECTION: 3 & 4
TOWNSHIP: 3N
RANGE: 64W



- | | | | | | |
|---|---|--|---|---|--|
| ①
MARIE D4-16
SE1/4SE1/4
665' FSL / 688' FEL
LAT-40.24910°N
LONG-104.54909°W
WELL STATUS: PR | ②
GUTTERSEN D3-33D
SE1/4SE1/4
709' FSL / 676' FEL
LAT-40.24922°N
LONG-104.54905°W
WELL STATUS: PR | ③
MARIE D4-23
SE1/4SE1/4
1268' FSL / 1307' FEL
LAT-40.25075°N
LONG-104.55130°W
WELL STATUS: PR | ④
MARIE D4-9
NE1/4SE1/4
1956' FSL / 715' FEL
LAT-40.25264°N
LONG-104.54917°W
WELL STATUS: PR | ⑤
GITTLEIN BLUE D4-08
SE1/4NE1/4
2079' FNL / 759' FEL
LAT-40.25604°N
LONG-104.54930°W
WELL STATUS: PR | ⑥
TWO E RANCH 1-4
LOT 1
794' FNL / 998' FEL
LAT-40.25956°N
LONG-104.55014°W
WELL STATUS: PR |
| ⑦
UPRR 39 PAN AM A
SW1/4SW1/4
644' FSL / 632' FWL
LAT-40.24904°N
LONG-104.54436°W
WELL STATUS: PR | ⑧
BECCA D3-13
SW1/4SW1/4
595' FSL / 772' FWL
LAT-40.24890°N
LONG-104.54386°W
WELL STATUS: PR | ⑨
BECCA D3-12
NW1/4SW1/4
1838' FSL / 657' FWL
LAT-40.25231°N
LONG-104.54425°W
WELL STATUS: PR | ⑩
BECCA D03-32
NW1/4SW1/4
2550' FSL / 1295' FWL
LAT-40.25425°N
LONG-104.54196°W
WELL STATUS: PR | ⑪
HRS GITTLEIN D5-3
SW1/4NW1/4
1955' FNL / 480' FWL
LAT-40.25638°N
LONG-104.54486°W
WELL STATUS: PR | ⑫
HRS GITTLEIN D4-3
NW1/4NW1/4
461' FNL / 479' FWL
LAT-40.26048°N
LONG-104.54484°W
WELL STATUS: PR |
| ⑬
MARIE D4-15
SW1/4SE1/4
648' FSL / 1951' FEL
LAT-40.24904°N
LONG-104.55362°W
WELL STATUS: PR | ⑭
MARIE D 4-10
NW1/4SE1/4
1874' FSL / 1930' FEL
LAT-40.25240°N
LONG-104.55352°W
WELL STATUS: PR | ⑮
GUTTERSEN D4-21
NW1/4SE1/4
2451' FSL / 2459' FEL
LAT-40.25398°N
LONG-104.55540°W
WELL STATUS: PR | ⑯
BURGHART D4-22
SW1/4NE1/4
2560' FNL / 1326' FEL
LAT-40.25472°N
LONG-104.55134°W
WELL STATUS: PR | ⑰
KARCH BLUE D4-7
SW1/4NE1/4
2082' FNL / 2044' FEL
LAT-40.25603°N
LONG-104.55391°W
WELL STATUS: PR | |
| ⑱
KARCH D 4-17
SW1/4NE1/4
1405' FNL / 1326' FEL
LAT-40.25789°N
LONG-104.55132°W
WELL STATUS: PR | ⑲
KARCH BLUE D4-2
LOT 1
884' FNL / 2038' FEL
LAT-40.25932°N
LONG-104.55387°W
WELL STATUS: PR | | | | |

LEGEND

- = PROPOSED WELL
- ◆ = BOTTOM HOLE
- ◆ = EXISTING WELL



FIELD
DATE:
06-11-13

DRAWING
DATE:
07-02-13

DRAWN BY:
JAH

CHECKED BY:
TJN