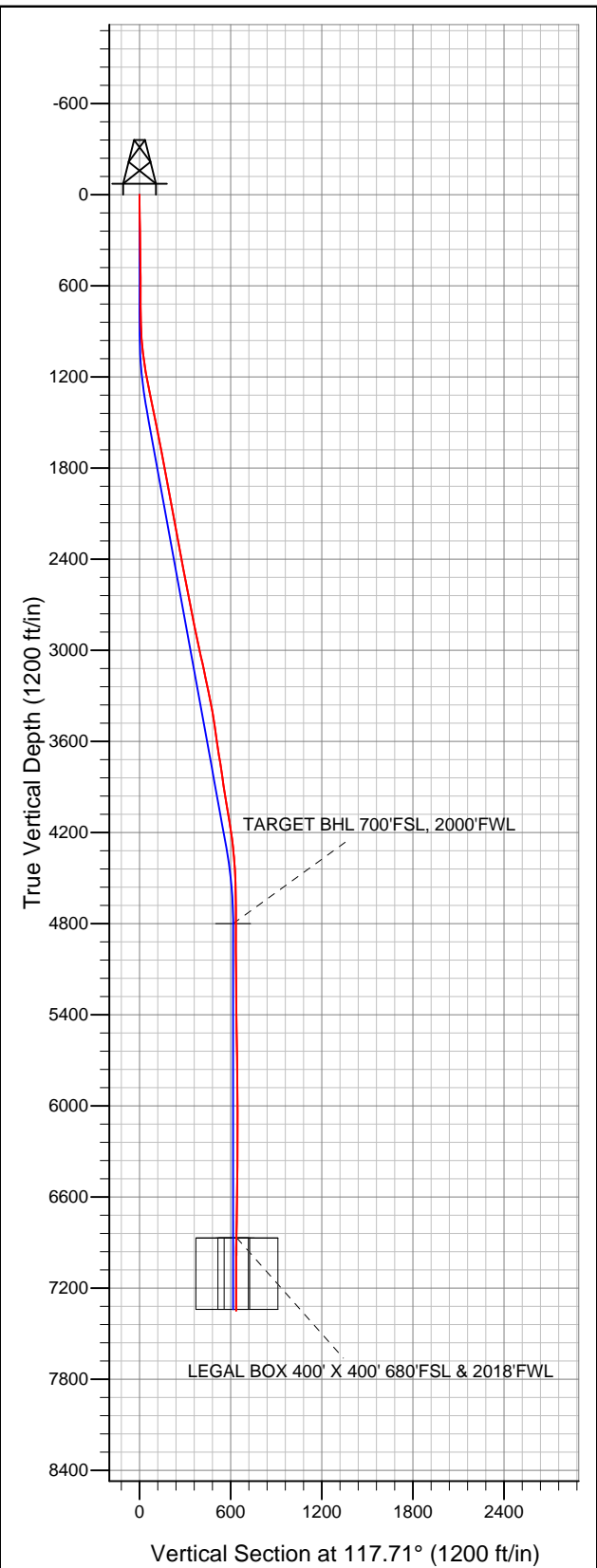


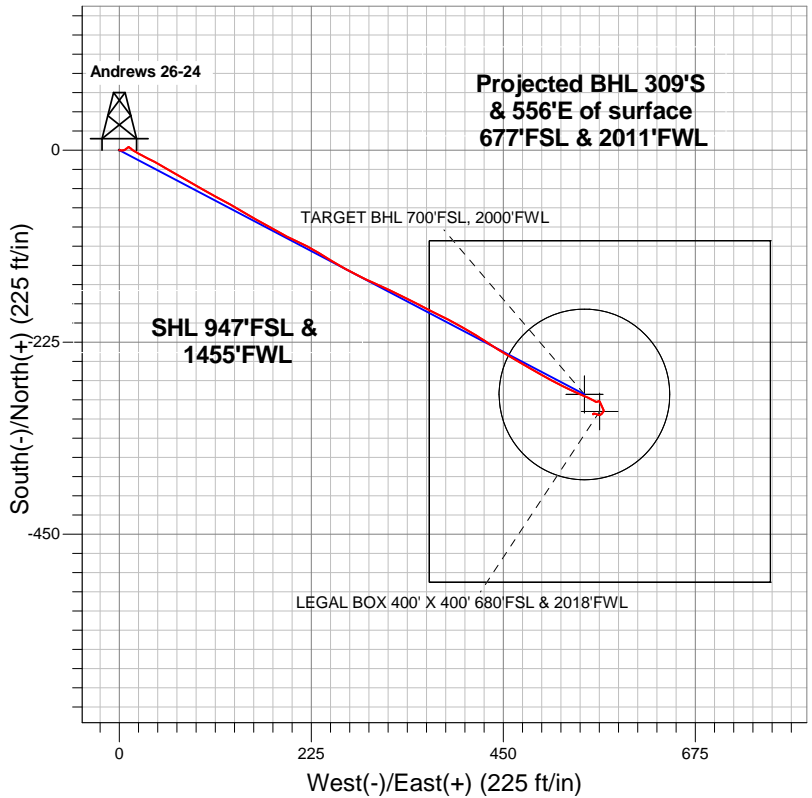
# Well Name: Andrews 26-24

Surface Location: Andrews 26-23 Pad Sec.26-T7N-R65W  
 North American Datum 1983 US State Plane 1983 Colorado Northern Zone  
 Ground Elevation: 4871.0  
 Northing 1441107.71 Easting 3240523.79 Latitude 40.541019 Longitude -104.634578 Slot  
 Original Well Elev WELL @ 4885.0ft (Original Well Elev)

+N/-S +E/-W  
 0.0 0.0



## Great Western



### LEGEND

- Andrews 26-24, Wellbore #1, Plan #2 (9-26-12) R V0
- Wellbore #1
- Survey #1

## Final Survey Plot

Projected Final Survey -  
 7404'MD & 7348'TVD @ 636'VS  
 0.50 deg Inc 61.00 deg AZ

Project: SEC.26-T7N-R65W  
 Site: Andrews 26-23 Pad Sec.26-T7N-R65W  
 Well: Andrews 26-24  
 Plan: Wellbore #1



## **Directional**

### **Great Western**

**SEC.26-T7N-R65W**

**Andrews 26-23 Pad Sec.26-T7N-R65W**

**Andrews 26-24**

**Wellbore #1**

**Survey: Survey #1**

### **Standard Survey Report**

**02 October, 2012**

Survey	Wellbore Data									
	Measured Depth (ft)	Inclination (°)	Azimuth (°)	Vertical Depth (ft)	+N/-S (ft)	+E/-W (ft)	Vertical Section (ft)	Dogleg Rate (°/100ft)	Build Rate (°/100ft)	Turn Rate (°/100ft)
Main Wellbore	0.0	0.00	0.00	0.0	0.0	0.0	0.0	0.00	0.00	0.00
	57.0	0.40	94.40	57.0	0.0	0.2	0.2	0.70	0.70	0.00
	148.0	0.70	102.70	148.0	-0.2	1.1	1.0	0.34	0.33	9.12
	240.0	1.00	106.00	240.0	-0.5	2.4	2.3	0.33	0.33	3.59
	422.0	1.10	64.50	422.0	-0.2	5.5	4.9	0.41	0.05	-22.80
	512.0	1.10	55.20	511.9	0.7	7.0	5.9	0.20	0.00	-10.33
	603.0	0.90	50.70	602.9	1.6	8.2	6.5	0.24	-0.22	-4.95
	696.0	0.90	59.60	695.9	2.5	9.4	7.2	0.15	0.00	9.57
	756.0	1.30	32.00	755.9	3.3	10.2	7.5	1.09	0.67	-46.00
	851.0	1.50	136.30	850.9	3.3	11.6	8.8	2.33	0.21	109.79
	946.0	4.10	124.70	945.8	0.5	15.3	13.3	2.79	2.74	-12.21
	1,040.0	6.50	119.70	1,039.4	-4.1	22.7	22.0	2.60	2.55	-5.32
	1,135.0	9.30	116.00	1,133.4	-10.1	34.2	35.0	2.99	2.95	-3.89

<b>Company:</b>	Great Western	<b>Local Co-ordinate Reference:</b>	Well Andrews 26-24
<b>Project:</b>	SEC.26-T7N-R65W	<b>TVD Reference:</b>	WELL @ 4885.0ft (Original Well Elev)
<b>Site:</b>	Andrews 26-23 Pad Sec.26-T7N-R65W	<b>MD Reference:</b>	WELL @ 4885.0ft (Original Well Elev)
<b>Well:</b>	Andrews 26-24	<b>North Reference:</b>	True
<b>Wellbore:</b>	Wellbore #1	<b>Survey Calculation Method:</b>	Minimum Curvature
<b>Design:</b>	Wellbore #1	<b>Database:</b>	Landmark

Survey										
Measured Depth (ft)	Inclination (°)	Azimuth (°)	Vertical Depth (ft)	+N/-S (ft)	+E/-W (ft)	Vertical Section (ft)	Dogleg Rate (°/100ft)	Build Rate (°/100ft)	Turn Rate (°/100ft)	
1,230.0	11.00	120.10	1,227.0	-18.0	49.0	51.8	1.94	1.79	4.32	
1,324.0	11.20	120.10	1,319.2	-27.1	64.6	69.8	0.21	0.21	0.00	
1,419.0	11.60	119.70	1,412.3	-36.5	80.9	88.6	0.43	0.42	-0.42	
1,514.0	11.30	119.40	1,505.4	-45.8	97.3	107.4	0.32	-0.32	-0.32	
1,608.0	11.20	119.20	1,597.6	-54.7	113.3	125.8	0.11	-0.11	-0.21	
1,703.0	11.20	118.50	1,690.8	-63.7	129.5	144.2	0.14	0.00	-0.74	
1,798.0	10.40	121.10	1,784.1	-72.5	144.9	162.0	0.99	-0.84	2.74	
1,892.0	11.10	118.70	1,876.5	-81.2	160.1	179.5	0.88	0.74	-2.55	
1,985.0	9.80	119.20	1,967.9	-89.4	174.9	196.4	1.40	-1.40	0.54	
2,079.0	10.10	119.60	2,060.5	-97.3	189.0	212.6	0.33	0.32	0.43	
2,174.0	10.70	114.80	2,154.0	-105.2	204.3	229.8	1.11	0.63	-5.05	
2,269.0	10.10	117.30	2,247.4	-112.7	219.7	246.9	0.79	-0.63	2.63	
2,363.0	10.00	121.80	2,340.0	-120.8	234.0	263.3	0.84	-0.11	4.79	
2,458.0	11.20	120.80	2,433.3	-129.8	248.9	280.7	1.28	1.26	-1.05	
2,553.0	11.30	118.90	2,526.5	-139.1	265.0	299.2	0.40	0.11	-2.00	
2,647.0	11.10	116.90	2,618.7	-147.6	281.1	317.5	0.46	-0.21	-2.13	
2,742.0	12.00	114.10	2,711.8	-155.8	298.3	336.5	1.12	0.95	-2.95	
2,837.0	11.20	114.50	2,804.9	-163.6	315.7	355.6	0.85	-0.84	0.42	
2,931.0	11.80	117.30	2,897.0	-171.8	332.5	374.3	0.87	0.64	2.98	
3,026.0	11.60	117.10	2,990.0	-180.6	349.7	393.6	0.21	-0.21	-0.21	
3,121.0	13.00	116.60	3,082.8	-189.8	367.7	413.8	1.48	1.47	-0.53	
3,215.0	11.10	117.30	3,174.7	-198.6	385.2	433.4	2.03	-2.02	0.74	
3,310.0	11.60	119.60	3,267.9	-207.6	401.7	452.1	0.71	0.53	2.42	
3,407.0	11.10	121.10	3,363.0	-217.2	418.1	471.2	0.60	-0.52	1.55	
3,502.0	9.00	124.30	3,456.5	-226.1	432.1	487.7	2.29	-2.21	3.37	
3,597.0	8.20	121.00	3,550.5	-233.8	444.0	501.8	0.99	-0.84	-3.47	
3,691.0	8.20	120.80	3,643.5	-240.7	455.5	515.2	0.03	0.00	-0.21	
3,786.0	9.30	119.90	3,737.4	-248.0	468.0	529.7	1.17	1.16	-0.95	
3,881.0	8.20	119.90	3,831.3	-255.2	480.5	544.1	1.16	-1.16	0.00	
3,975.0	9.10	119.70	3,924.2	-262.2	492.8	558.2	0.96	0.96	-0.21	
4,070.0	9.60	118.50	4,018.0	-269.7	506.3	573.6	0.56	0.53	-1.26	
4,165.0	9.30	116.60	4,111.7	-276.9	520.1	589.2	0.46	-0.32	-2.00	
4,259.0	7.70	113.60	4,204.6	-282.8	532.7	603.1	1.77	-1.70	-3.19	
4,354.0	6.60	113.10	4,298.9	-287.5	543.5	614.9	1.16	-1.16	-0.53	
4,449.0	4.50	118.50	4,393.4	-291.5	551.8	624.1	2.28	-2.21	5.68	
4,543.0	2.60	118.70	4,487.3	-294.2	557.0	629.9	2.02	-2.02	0.21	
4,638.0	0.60	73.30	4,582.2	-295.1	559.3	632.4	2.34	-2.11	-47.79	
4,830.0	0.40	62.30	4,774.2	-294.5	560.9	633.5	0.12	-0.10	-5.73	
4,855.7	0.40	64.59	4,799.9	-294.4	561.0	633.6	0.06	-0.01	8.91	
TARGET BHL 700'FSL, 2000'FWL										
5,019.0	0.40	79.30	4,963.2	-294.1	562.1	634.4	0.06	0.00	9.01	
5,208.0	0.50	158.40	5,152.2	-294.7	563.1	635.5	0.31	0.05	41.85	
5,397.0	0.50	162.90	5,341.2	-296.3	563.6	636.7	0.02	0.00	2.38	
5,555.0	1.40	154.20	5,499.2	-298.7	564.7	638.8	0.58	0.57	-5.51	
5,745.0	1.10	148.40	5,689.1	-302.3	566.6	642.2	0.17	-0.16	-3.05	
5,934.0	0.50	180.00	5,878.1	-304.7	567.6	644.2	0.38	-0.32	16.72	
6,124.0	0.50	190.20	6,068.1	-306.4	567.4	644.8	0.05	0.00	5.37	
6,345.0	1.30	228.00	6,289.1	-309.0	565.4	644.2	0.43	0.36	17.10	
6,534.0	0.40	256.00	6,478.0	-310.6	563.2	643.0	0.51	-0.48	14.81	
6,692.0	0.70	296.60	6,636.0	-310.3	561.8	641.6	0.30	0.19	25.70	
6,881.0	1.60	285.50	6,825.0	-309.1	558.2	637.9	0.49	0.48	-5.87	
6,925.9	1.25	280.09	6,869.9	-308.8	557.1	636.8	0.84	-0.78	-12.03	
LEGAL BOX 400' X 400' 680'FSL & 2018'FWL										
6,926.1	1.25	280.09	6,870.1	-308.8	557.1	636.8	0.00	0.00	0.00	

<b>Company:</b>	Great Western	<b>Local Co-ordinate Reference:</b>	Well Andrews 26-24
<b>Project:</b>	SEC.26-T7N-R65W	<b>TVD Reference:</b>	WELL @ 4885.0ft (Original Well Elev)
<b>Site:</b>	Andrews 26-23 Pad Sec.26-T7N-R65W	<b>MD Reference:</b>	WELL @ 4885.0ft (Original Well Elev)
<b>Well:</b>	Andrews 26-24	<b>North Reference:</b>	True
<b>Wellbore:</b>	Wellbore #1	<b>Survey Calculation Method:</b>	Minimum Curvature
<b>Design:</b>	Wellbore #1	<b>Database:</b>	Landmark

Survey									
Measured Depth (ft)	Inclination (°)	Azimuth (°)	Vertical Depth (ft)	+N/-S (ft)	+E/-W (ft)	Vertical Section (ft)	Dogleg Rate (°/100ft)	Build Rate (°/100ft)	Turn Rate (°/100ft)
TARGET CIRCLE 700'FSL & 2000'FWL									
7,102.0	0.60	180.00	7,046.0	-309.4	555.2	635.4	0.84	-0.37	-56.89
7,259.0	0.30	3.70	7,203.0	-309.8	555.2	635.6	0.57	-0.19	-112.29
7,354.0	0.40	43.60	7,298.0	-309.3	555.5	635.6	0.27	0.11	42.00
7,404.0	0.50	61.00	7,348.0	-309.1	555.8	635.8	0.34	0.20	34.80

Wellbore Targets									
Target Name	Dip Angle (°)	Dip Dir. (°)	TVD (ft)	+N/-S (ft)	+E/-W (ft)	Northing (ft)	Easting (ft)	Latitude	Longitude
- hit/miss target									
- Shape									
TARGET BHL 700'FS	0.00	0.00	4,800.0	-286.3	545.0	1,440,826.72	3,241,071.59	40.540233	-104.632617
- survey misses target center by 17.9ft at 4855.7ft MD (4799.9 TVD, -294.4 N, 561.0 E)									
- Point									
LEGAL BOX 400' X 400'	0.00	0.00	6,870.0	-306.3	563.0	1,440,806.93	3,241,089.73	40.540178	-104.632552
- survey misses target center by 6.4ft at 6925.9ft MD (6869.9 TVD, -308.8 N, 557.1 E)									
- Rectangle (sides W400.0 H400.0 D469.0)									
TARGET CIRCLE 700'	0.00	0.00	6,870.0	-286.3	545.0	1,440,826.72	3,241,071.59	40.540233	-104.632617
- survey misses target center by 25.5ft at 6926.1ft MD (6870.1 TVD, -308.8 N, 557.1 E)									
- Circle (radius 100.0)									

Checked By: \_\_\_\_\_ Approved By: \_\_\_\_\_ Date: \_\_\_\_\_