

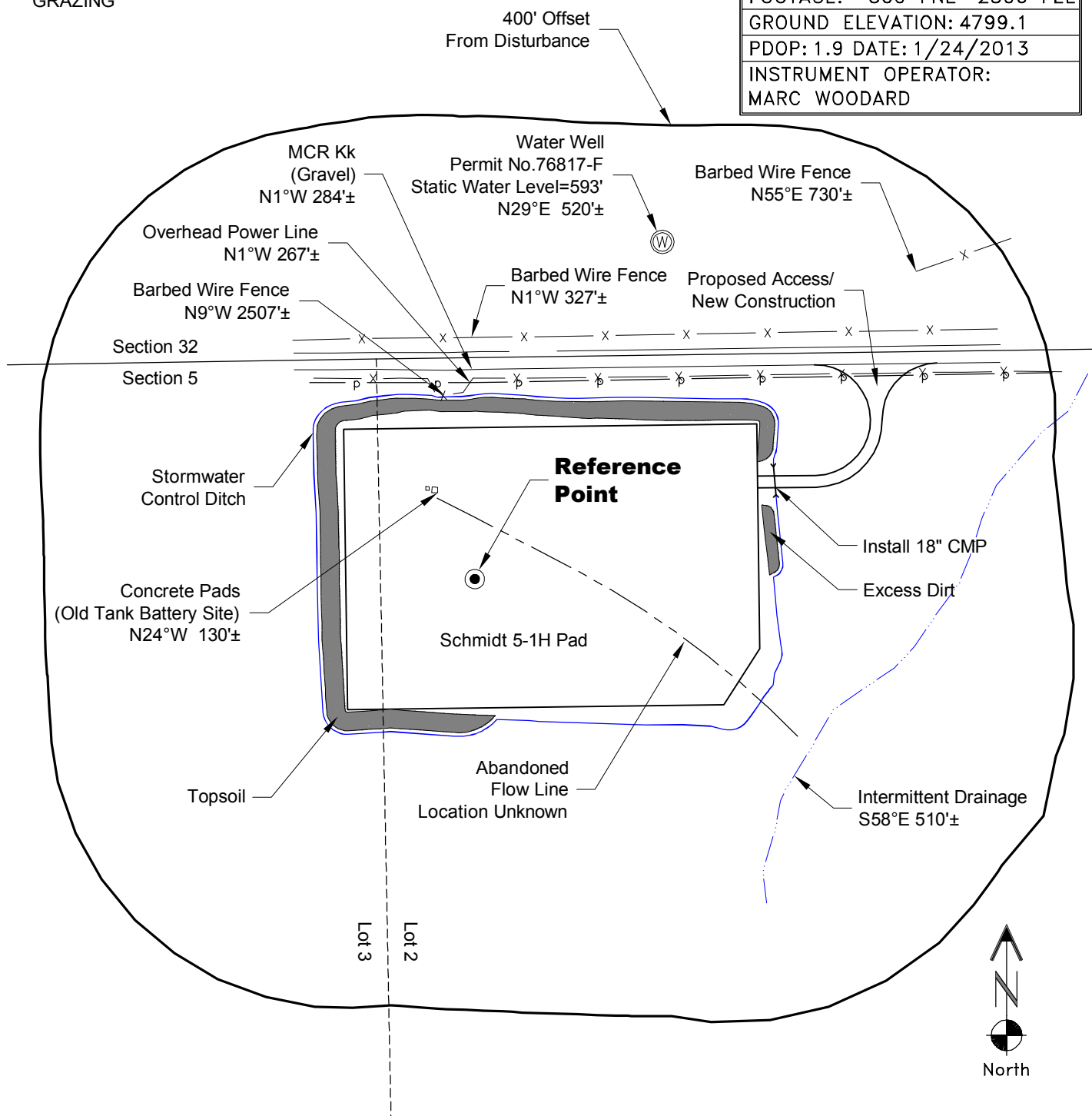
VEGETATION:
PASTURE

SURFACE USE:
GRAZING

LOCATION DRAWING

REFERENCE POINT

LATITUDE: 40.52357
LONGITUDE: -104.11799
FOOTAGE: 300 FNL 2506 FEL
GROUND ELEVATION: 4799.1
PDOP: 1.9 DATE: 1/24/2013
INSTRUMENT OPERATOR: MARC WOODARD



NOTE-DISTANCE TO NEAREST:

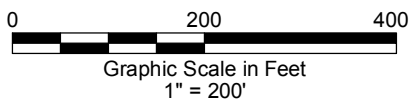
Property Line - N1°W 300'±
Public Road - MCR Kk - N1°W 284'±
Building - House N65°W 1,650'±
Railroad - S11°E 19.5 Miles±
Power Line - N1°W 267'±

DISTURBANCE ACREAGE:
6.6± DRILLING OPERATIONS

NOTE:

ALL PRODUCTION FACILITIES WILL BE ON PAD.

2/11/13



LAND SURVEYING AND MAPPING
LAFAYETTE - WINTER PARK
Ph 303 666 0379 Fx 303 665 6320

CONDOR ENERGY TECHNOLOGY LLC
SCHMIDT 5-1H PAD

LOT 2 SECTION 5 T6N R60W
6th PM MORGAN COUNTY COLORADO