

LEGEND:

PROPOSED LOCATION

GREAT WESTERN OIL & GAS COMPANY

POSTLE IC #11-15HN, #11-15HC, #11-40HN-2,
 #11-40HN-1, #11-8HC, #11-8HN, #11-4HN,
 #11-1HC & #11-1HN
 SECTION 11, T3N, R68W, 6th P.M.
 SW 1/4 NW1/4



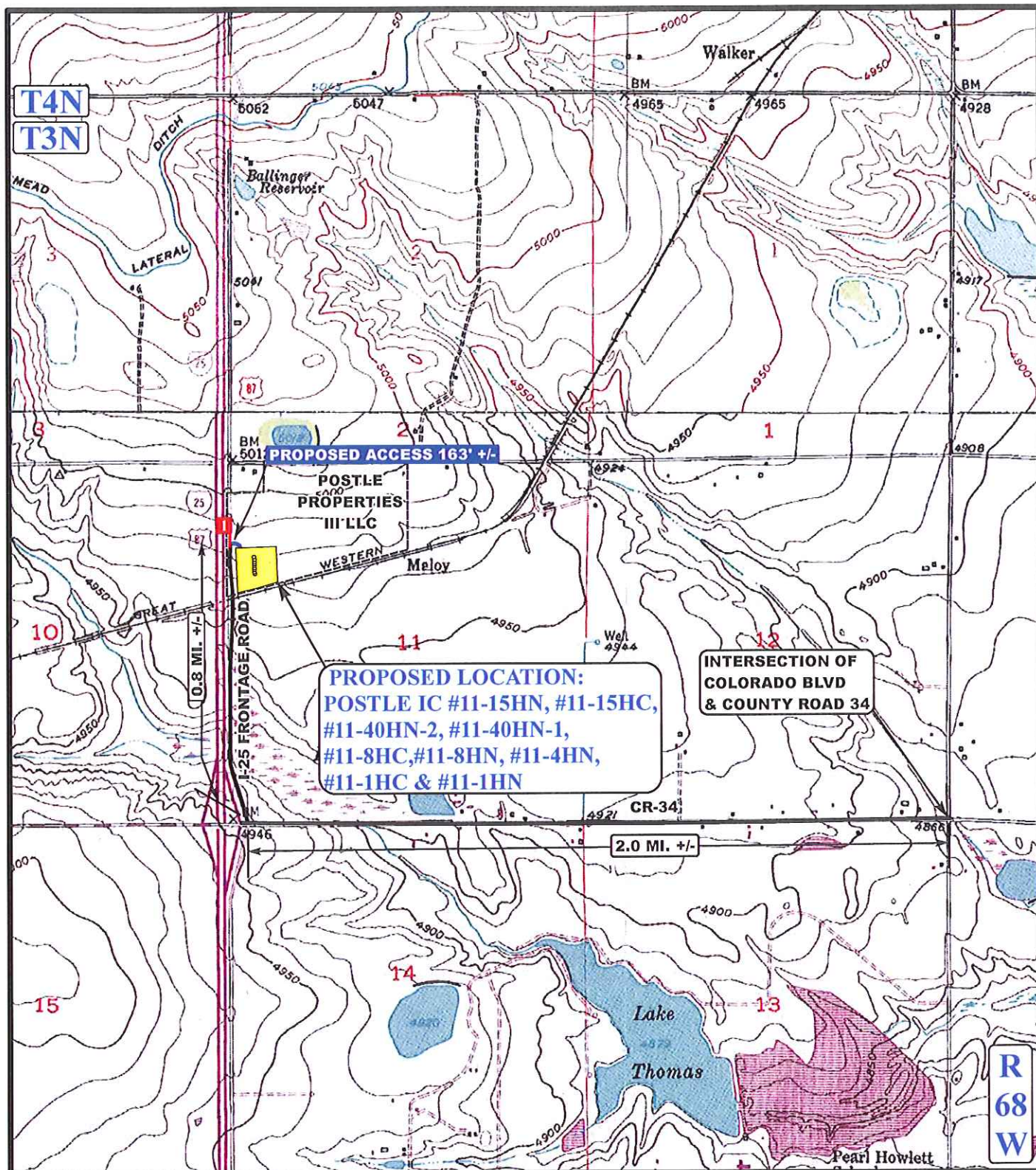
Uintah Engineering & Land Surveying
 85 South 200 East Vernal, Utah 84078
 (435) 789-1017 * FAX (435) 789-1813

ACCESS ROAD
 MAP

04 23 13
 MONTH DAY YEAR

SCALE: 1:100,000 DRAWN BY: J.L.H. REVISED: 07-29-13





LEGEND:

- EXISTING ROADS
- PROPOSED ACCESS ROAD
- 24" CMP REQUIRED

GREAT WESTERN OIL & GAS COMPANY

POSTLE IC #11-15HN, #11-15HC, #11-40HN-2,
#11-40HN-1, #11-8HC, #11-8HN, #11-4HN,
#11-1HC & #11-1HN
SECTION 11, T3N, R68W, 6th P.M.
SW 1/4 NW1/4



Uintah Engineering & Land Surveying
85 South 200 East Vernal, Utah 84078
(435) 789-1017 * FAX (435) 789-1813



ACCESS ROAD
MAP

04 23 13
MONTH DAY YEAR

SCALE: 1"=2000' DRAWN BY: J.L.H. REVISED: 07-29-13

