

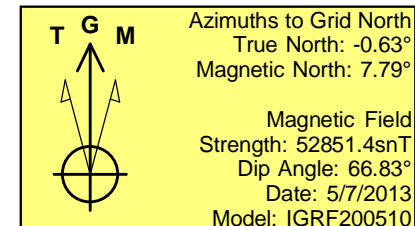
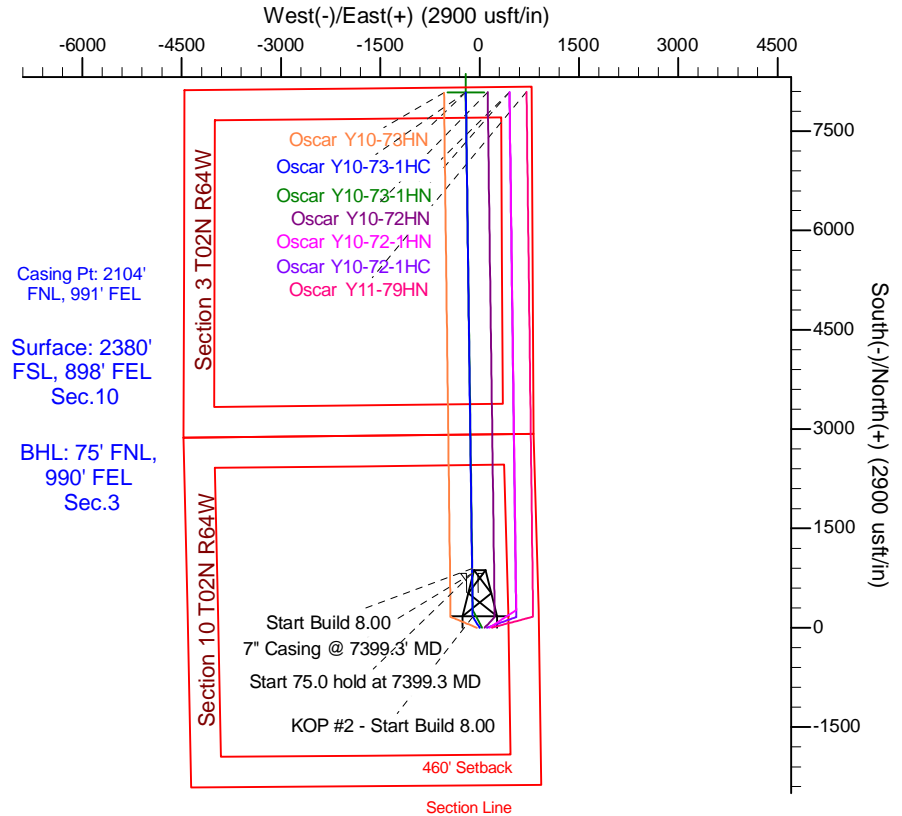
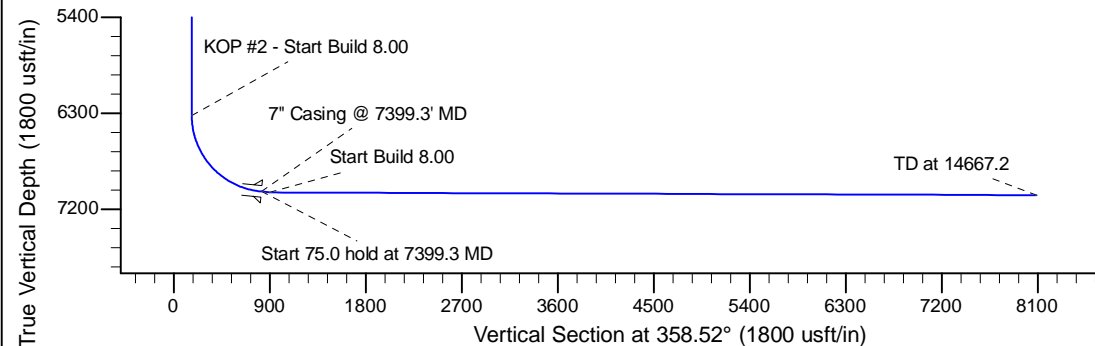
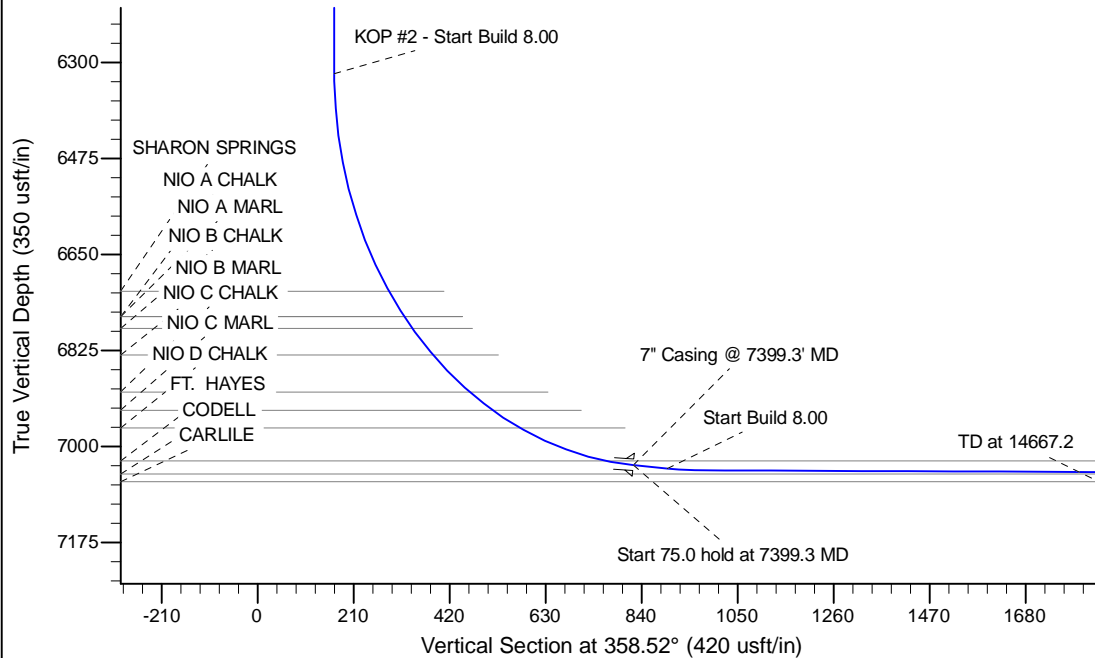
Project: Wattenberg Field
 Site: Y (Sec.10-T02N-R64W) Weld County, CO
 Well: Oscar Y10-73-1HC
 Wellbore: Original Drilling
 Design: APD - Rev 0

Northern Region Drilling

Geodetic System: US State Plane 1983
 Datum: North American Datum 1983
 Ellipsoid: GRS 1980
 Zone: Colorado Northern Zone
 System Datum: Mean Sea Level

SECTION DETAILS

Sec	MD	Inc	Azi	TVD	+N/-S	+E/-W	Dleg	TFace	VSect	Target
1	0.0	0.00	0.00	0.0	0.0	0.0	0.00	0.00	0.0	
2	1500.0	0.00	0.00	1500.0	0.0	0.0	0.00	0.00	0.0	
3	2104.2	12.08	327.53	2099.7	53.5	-34.1	2.00	327.53	54.4	
4	2432.0	12.08	327.53	2420.3	111.5	-70.9	0.00	0.00	113.2	
5	3036.2	0.00	0.00	3020.0	165.0	-105.0	2.00	180.00	167.7	
6	6336.8	0.00	0.00	6320.6	165.0	-105.0	0.00	0.00	167.7	
7	7399.3	85.00	359.25	7034.0	818.7	-113.5	8.00	359.25	821.4	
8	7474.3	85.00	359.25	7040.6	893.4	-114.5	0.00	0.00	896.1	
9	7534.3	89.80	359.25	7043.3	953.3	-115.3	8.00	0.00	956.0	
10	14667.2	89.80	359.25	7068.2	8085.6	-208.5	0.00	0.00	8088.3	Oscar Y10-73-1HC BHL 75'FNL, 990'FEL



WELL DETAILS: Oscar Y10-73-1HC				
Ground Level: 4927.0				
0.0	0.0	1299776.05	3270770.85	40.152220
Northing		Easting		Latitude
				Longitude

Plan: APD - Rev 0 (Oscar Y10-73-1HC/Original Drilling)

Created By: -Shailey Jewell Date: 12:59, May 07 2013

OK to submit with 2A as per Noble Drilling
5/7/2013 2:08