

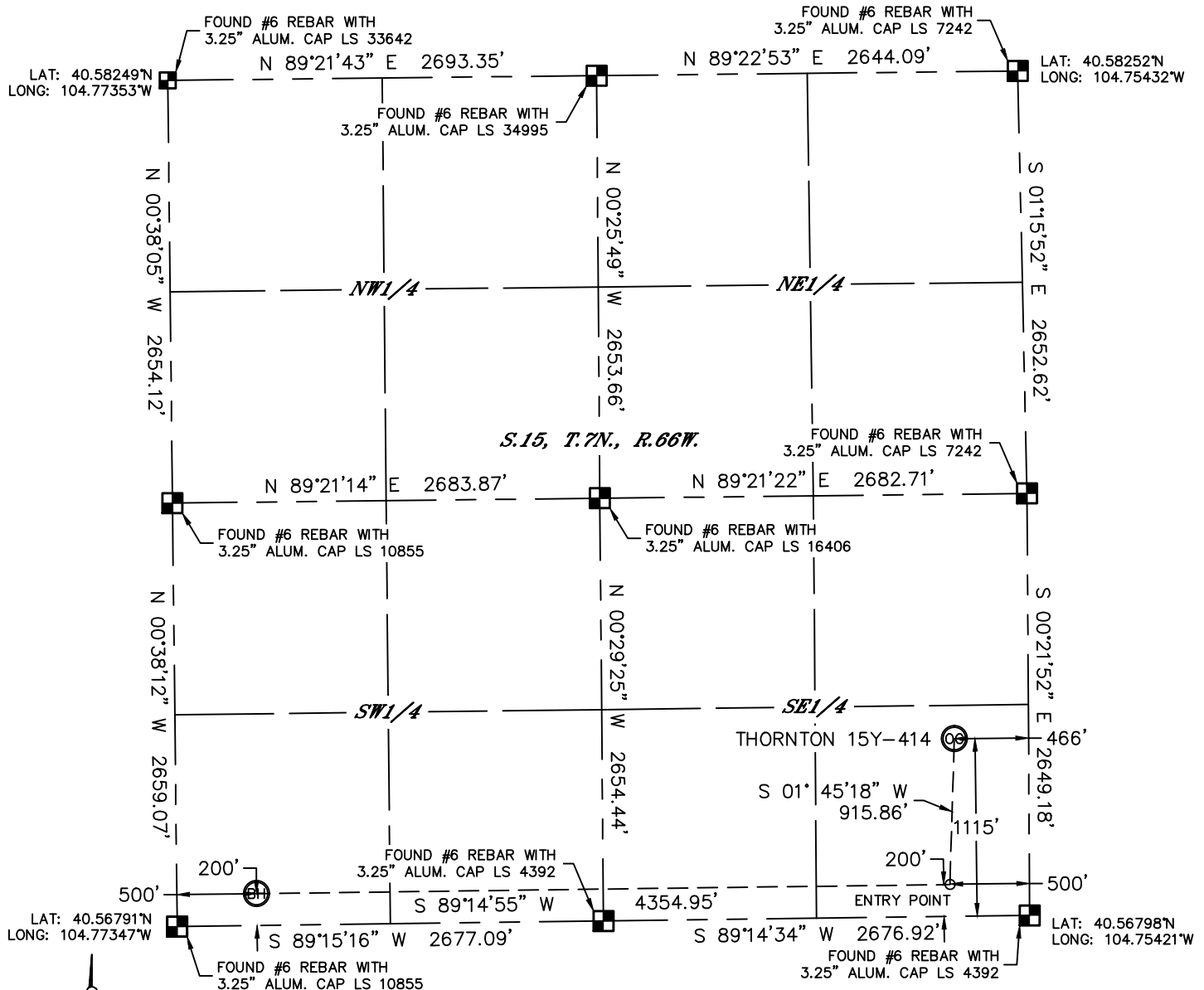


Lat40°, Inc. 1635 Foxtrail Drive, Suite 325 Loveland, CO 970-776-3321

# WELL LOCATION CERTIFICATE

THIS MAP DOES NOT REPRESENT A BOUNDARY SURVEY

SECTION: 15  
TOWNSHIP: 7N  
RANGE: 66W



In accordance with a request from Jeff Dillingham with PDC ENERGY Lat40°, Inc. has determined the surface location of the THORNTON 15Y-414 to be 1115' from the SOUTH line and 466' from the EAST line and the bottom hole to be 200' from the SOUTH line and 500' from the WEST line as measured at right angles from the section lines of Section 15, Township 7 North, Range 66 West of the Sixth Principal Meridian, County of Weld, State of Colorado.

I hereby state that this Well Location Certificate was prepared by me, or under my direct supervision, that the fieldwork was completed on 6/13/2013, for and on behalf of PDC ENERGY. That this is not a Land Survey Plat or an Improvement Survey Plat, and that it is not to be relied upon for establishment of fence, building, or other future improvement lines.

## NOTE:

- 1) Bearings shown are Grid Bearings of the Colorado State Plane Coordinate System, North Zone, North American Datum 1983/2007. The lineal dimensions as contained herein are based upon the "U.S. Survey Foot."
- 2) Ground elevations are based on an observed GPS elevation (NAVD 1988 DATUM).
- 3) IMPROVEMENTS: See LOCATION DRAWING for all visible improvements within 400' of disturbed area.
- 4) SURFACE USE: CROPLAND
- 5) INSTRUMENT OPERATOR: BRIAN BONIFACE

## NOTE

According to Colorado law, you must commence any legal action based upon any defect in this W.L.C. within three years after you discover such defect. In no event, may any action based upon any defect in this survey be commenced more than ten years after the date of the certificate shown hereon. (13-80-105 C.R.S.)

## LEGEND

- = ALIQUOT MONUMENT AS DESCRIBED
- = CALCULATED POSITION

## SURFACE LOCATION

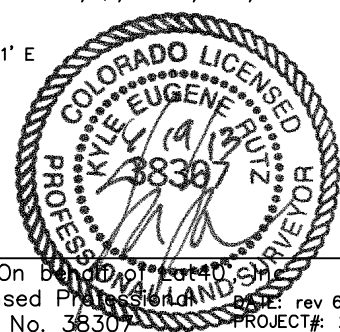
LAT: 40.57103°N  
LONG: 104.75588°W  
PDOP: 2.0  
ELEV: 4921'  
1/4,1/4: SE1/4SE1/4  
NEAREST PROPERTY LINE: 151' E

## ENTRY POINT

LAT: 40.56852°N  
LONG: 104.75601°W  
1/4,1/4: SE1/4SE1/4

## BOTTOM HOLE

LAT: 40.56846°N  
LONG: 104.77168°W  
1/4,1/4: SW1/4SW1/4



Kyle E. Rutz—On behalf of Lat40°, Inc.  
Colorado Licensed Professional Land Surveyor No. 38307  
rev 6/26/2013  
PROJECT#: 2013084

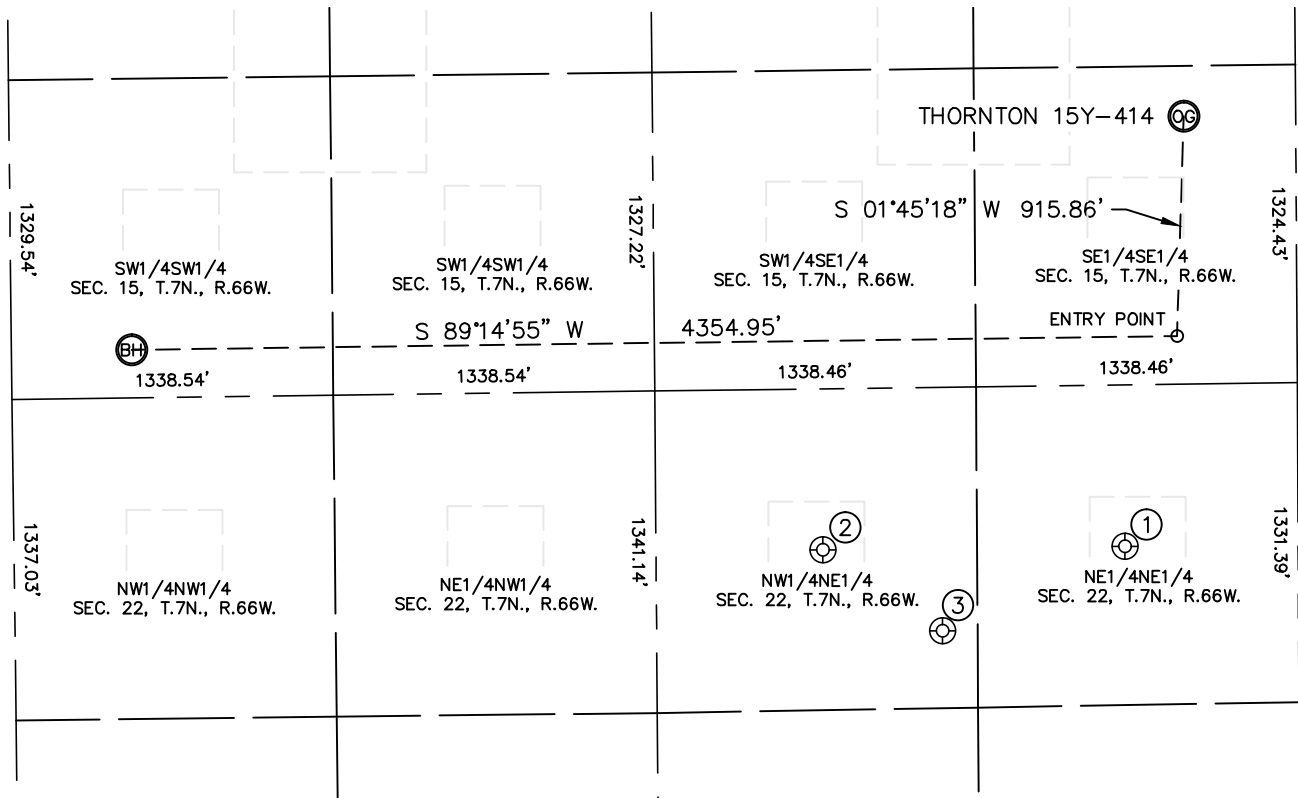


Lat40°, Inc. 1635 Foxtrail Drive, Suite 325 Loveland, CO 970-776-3321

# SITE SKETCH

THORNTON 15Y-414

SECTION: 15  
TOWNSHIP: 7N  
RANGE: 66W



①

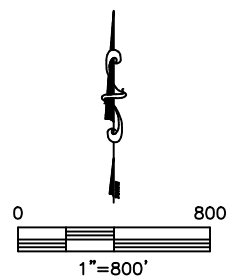
HERRELL 1-22  
NE1/4NE1/4  
672' FNL  
721' FEL  
LAT-40.56612°N  
LONG-104.75681°W  
PDOP: 1.6  
ELEV: 4908'

②

HERRELL 2-22  
NW1/4NE1/4  
672' FNL  
1979' FEL  
LAT-40.56611°N  
LONG-104.76134°W  
PDOP: 1.6  
ELEV: 4922'

③

HERRELL 17-22  
NW1/4NE1/4  
1015' FNL  
1483' FEL  
LAT-40.56517°N  
LONG-104.75956°W  
PDOP: 1.6  
ELEV: 4922'



DATE: 6/18/2013  
PROJECT#: 2013084