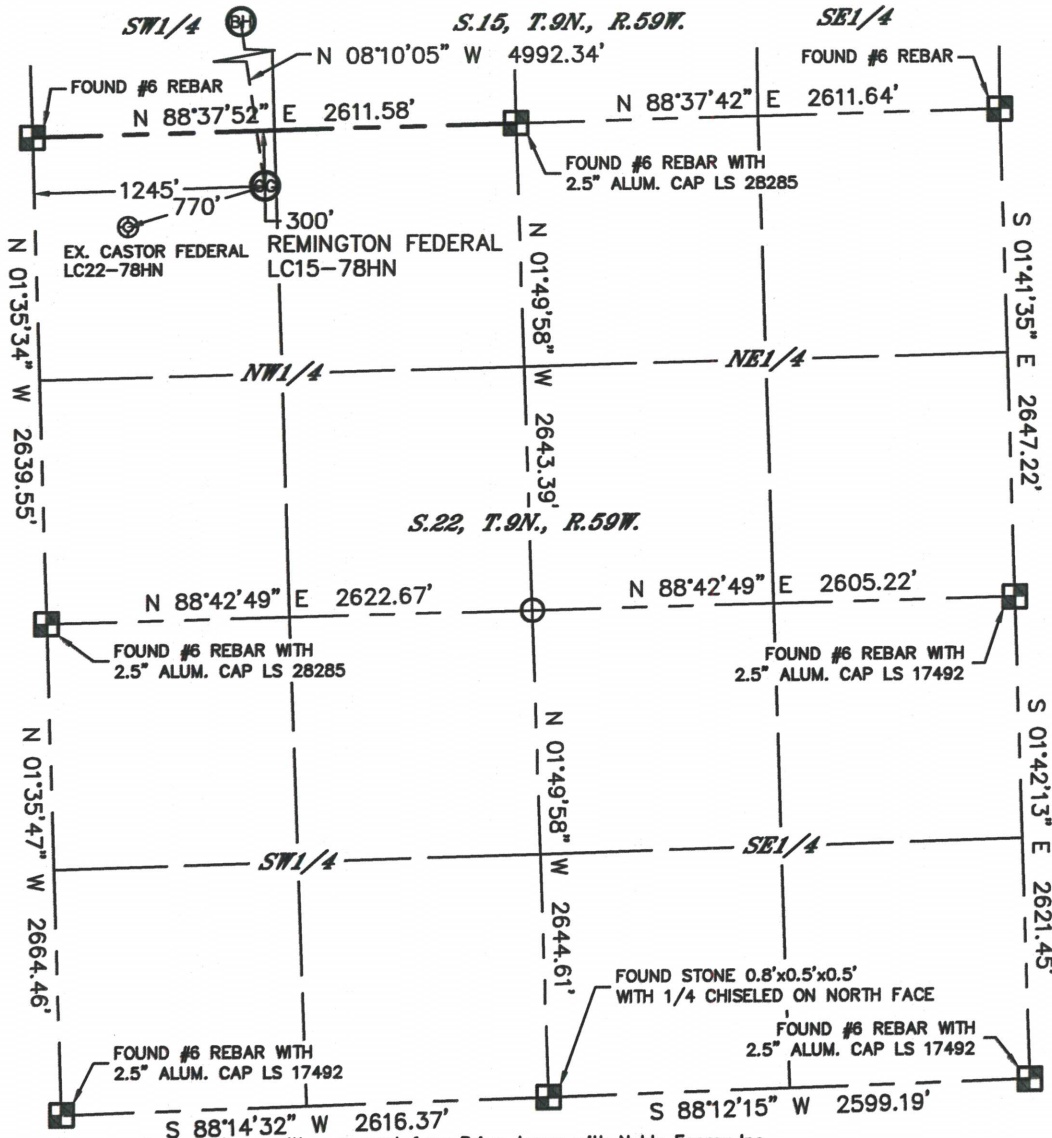


WELL LOCATION CERTIFICATE

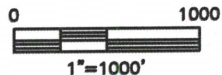
SECTION: 22
TOWNSHIP: 9N
RANGE: 59W

THIS MAP DOES NOT REPRESENT A BOUNDARY SURVEY



In accordance with a request from Brian James with Noble Energy Inc. Lat40°, Inc. has determined the surface location of the REMINGTON FEDERAL LC15-78HN to be 300' from the NORTH line and 1245' from the WEST line as measured at right angles from the section lines of Section 22, Township 9 North, Range 59 West and the bottom hole to be 660' from the NORTH line and 660' from the WEST line as measured at right angles from the section lines of Section 15, Township 9 North, Range 59 West of the Sixth Principal Meridian, County of Weld, State of Colorado.

I hereby state that this Well Location Certificate was prepared by me, or under my direct supervision, that the fieldwork was completed on 6/3/2013, for and on behalf of Noble Energy Inc. That this is not a Land Survey Plat or an Improvement Survey Plat, and that it is not to be relied upon for establishment of fence, building, or other future improvement lines.



NOTE:

- 1) Bearings shown are Grid Bearings of the Colorado State Plane Coordinate System, North Zone, North American Datum 1983/2007. The lineal dimensions as contained herein are based upon the "U.S. Survey Foot."
- 2) Ground elevations are based on an observed GPS elevation (NAVD 1988 DATUM).
- 3) NEAREST EXISTING WELL: CASTOR FEDERAL LC22-78HN, 770'
- 4) IMPROVEMENTS: See LOCATION DRAWING for all visible improvements within 400' of disturbed area.
- 5) SURFACE USE: RANGE LAND
- 6) INSTRUMENT OPERATOR: BRIAN ROTTINGHAUS

SURFACE LOCATION

LAT: 40.74261N
LONG: 103.96915W
PDOP: 1.7
ELEV: 4916'
1/4, 1/4: NW1/4NW1/4
NEAREST PROPERTY LINE: 300' NORTH

BOTTOM HOLE

LAT: 40.75620N
LONG: 103.97140W

NOTE

According to Colorado law, you must commence any legal action based upon any defect in this W.L.C. within three years after you discover such defect. In no event, may any action based upon any defect in this survey be commenced more than ten years after the date of the certificate shown hereon. (13-80-105 C.R.S.)

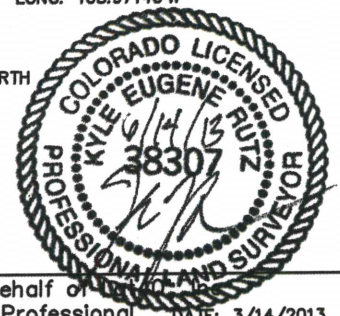
LEGEND

- = ALIQUOT MONUMENT AS DESCRIBED
- = CALCULATED POSITION

SHEET 1 OF 2

Kyle E. Rutz—On behalf of
Colorado Licensed Professional
Land Surveyor No. 38307

DATE: 3/14/2013
PROJECT#: 2013079

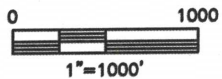
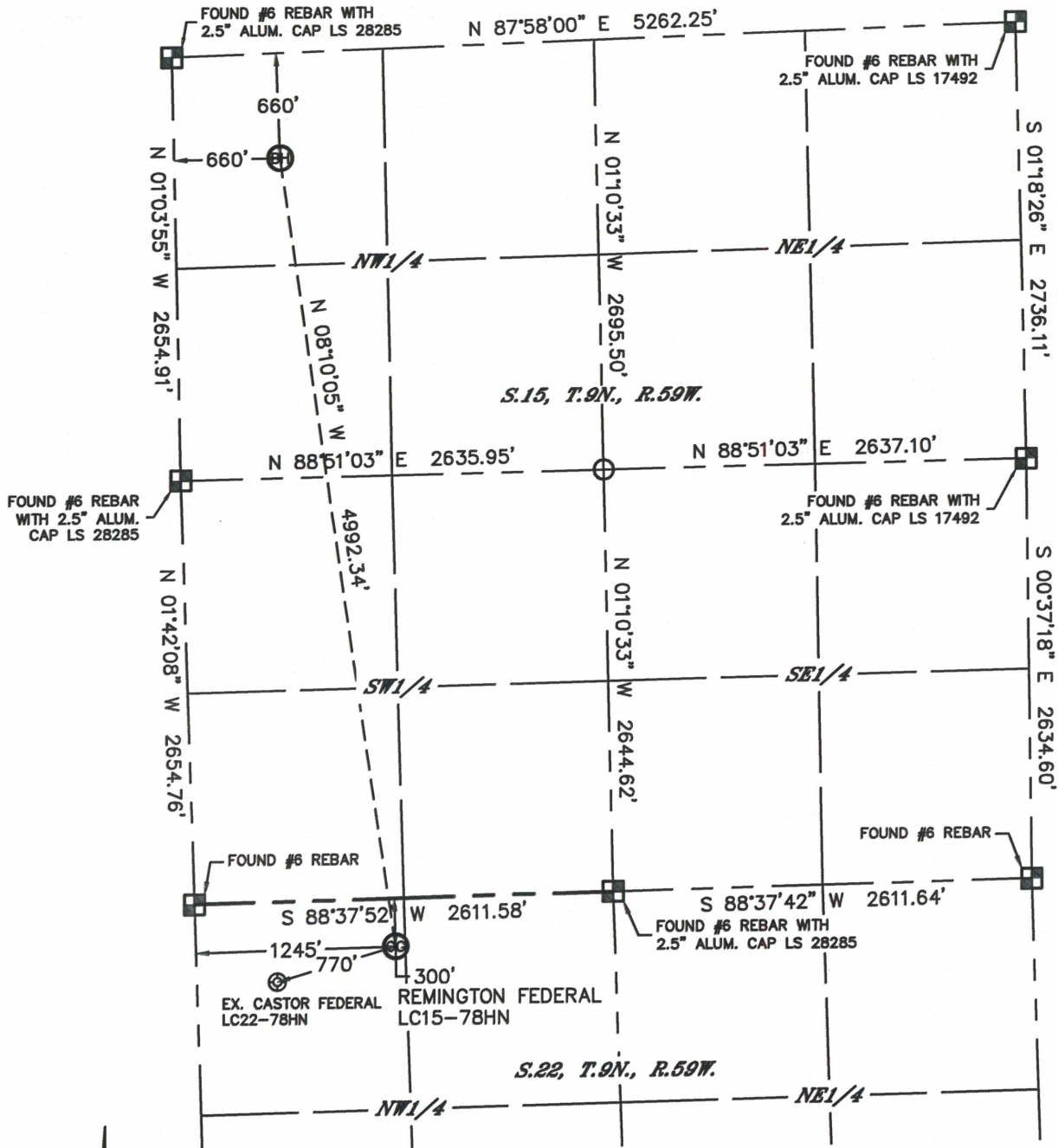


Lat40°, Inc. 1635 Foxtrail Drive, Suite 325 Loveland, CO 970-776-3321

WELL LOCATION CERTIFICATE

THIS MAP DOES NOT REPRESENT A BOUNDARY SURVEY

SECTION: 22
TOWNSHIP: 9N
RANGE: 59W



NOTE

According to Colorado law, you must commence any legal action based upon any defect in this W.L.C. within three years after you discover such defect. In no event, may any action based upon any defect in this survey be commenced more than ten years after the date of the certificate shown hereon. (13-80-105 C.R.S.)

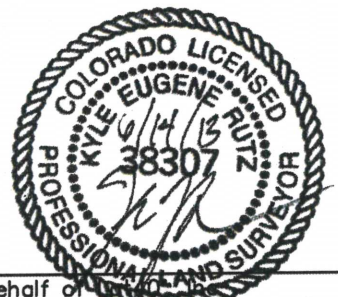
LEGEND

- = ALIQUOT MONUMENT AS DESCRIBED
- = CALCULATED POSITION

SHEET 2 OF 2

Kyle E. Rutz—On behalf of
Colorado Licensed Professional
Land Surveyor No. 38307

DATE: 3/14/2013
PROJECT#: 2013079

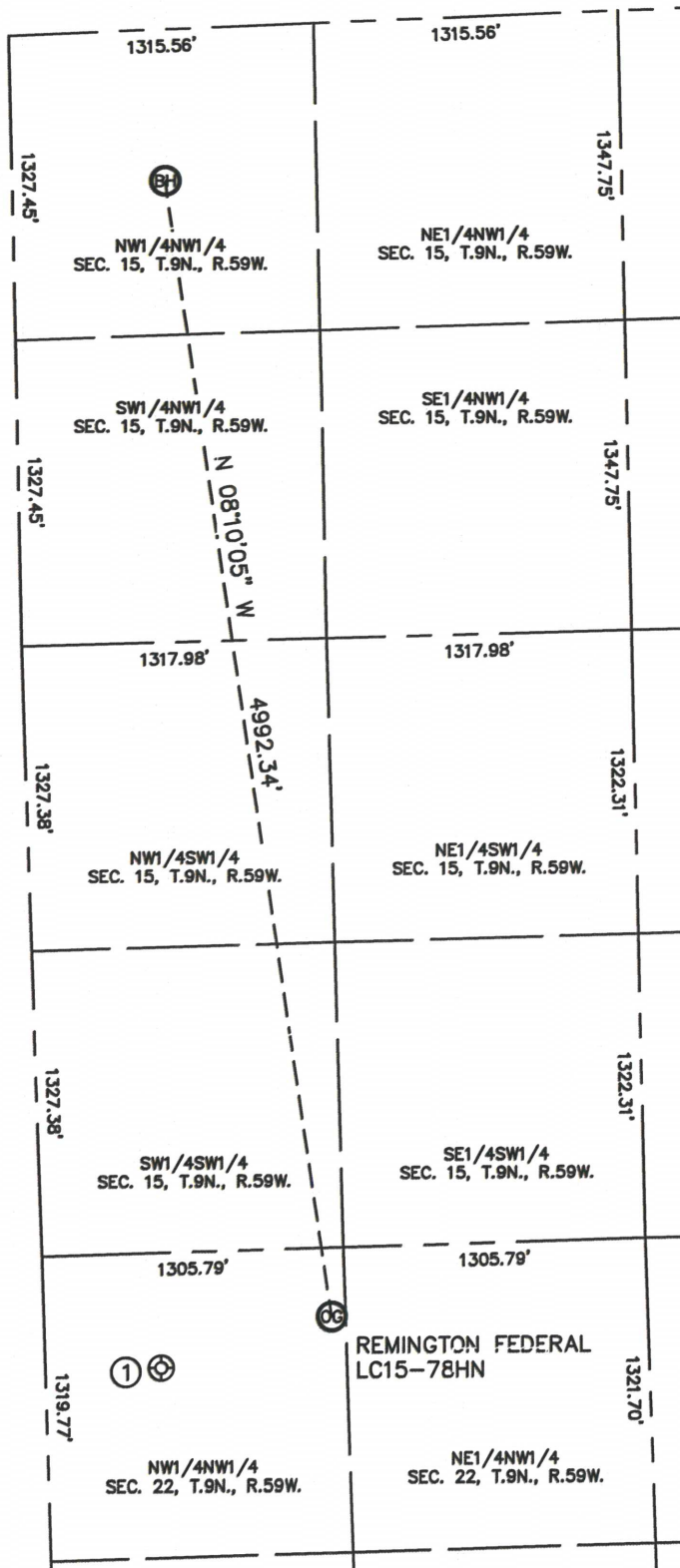


Lat40°, Inc. 1635 Foxtrail Drive, Suite 325 Loveland, CO 970-776-3321

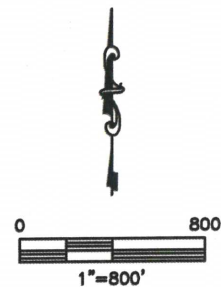
SITE SKETCH

REMINGTON FEDERAL LC15-78HN

SECTION: 22
TOWNSHIP: 9N
RANGE: 59W



①
CASTOR FEDERAL LC22-78HN
NW1/4NW1/4
501' FNL
501' FWL
LAT-40.74204°N
LONG-103.97183°W
PDOP: 2.4
ELEV: 4917'



DATE: 3/14/2013
PROJECT#: 2013079