

Company: Black Diamond Minerals, LLC
Project: Garfield County, CO
Site: Tepee Park Ranch 25A Pad

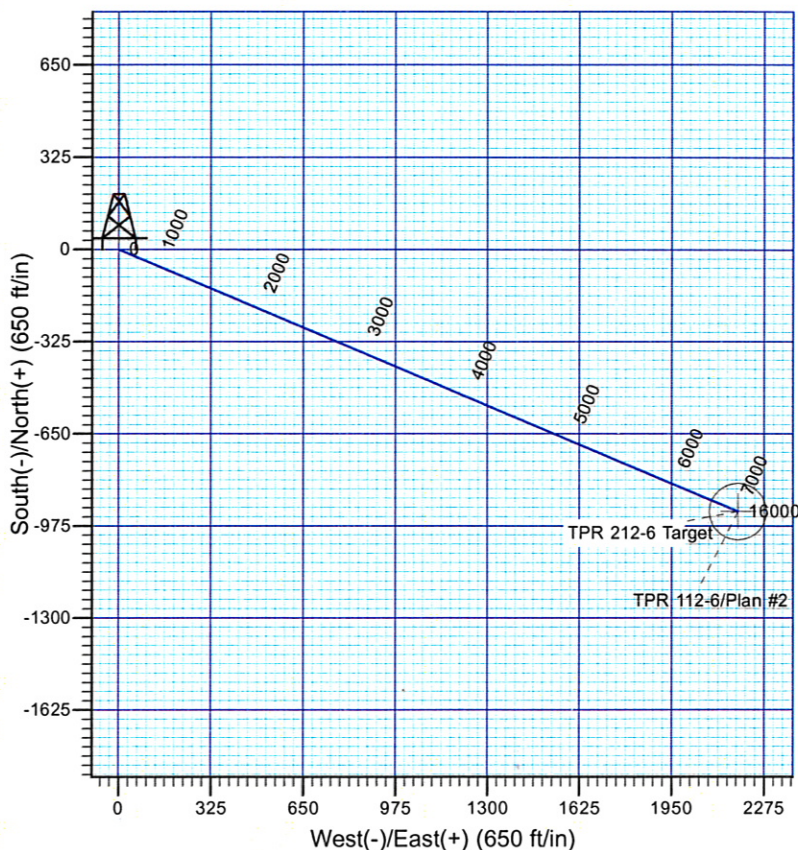
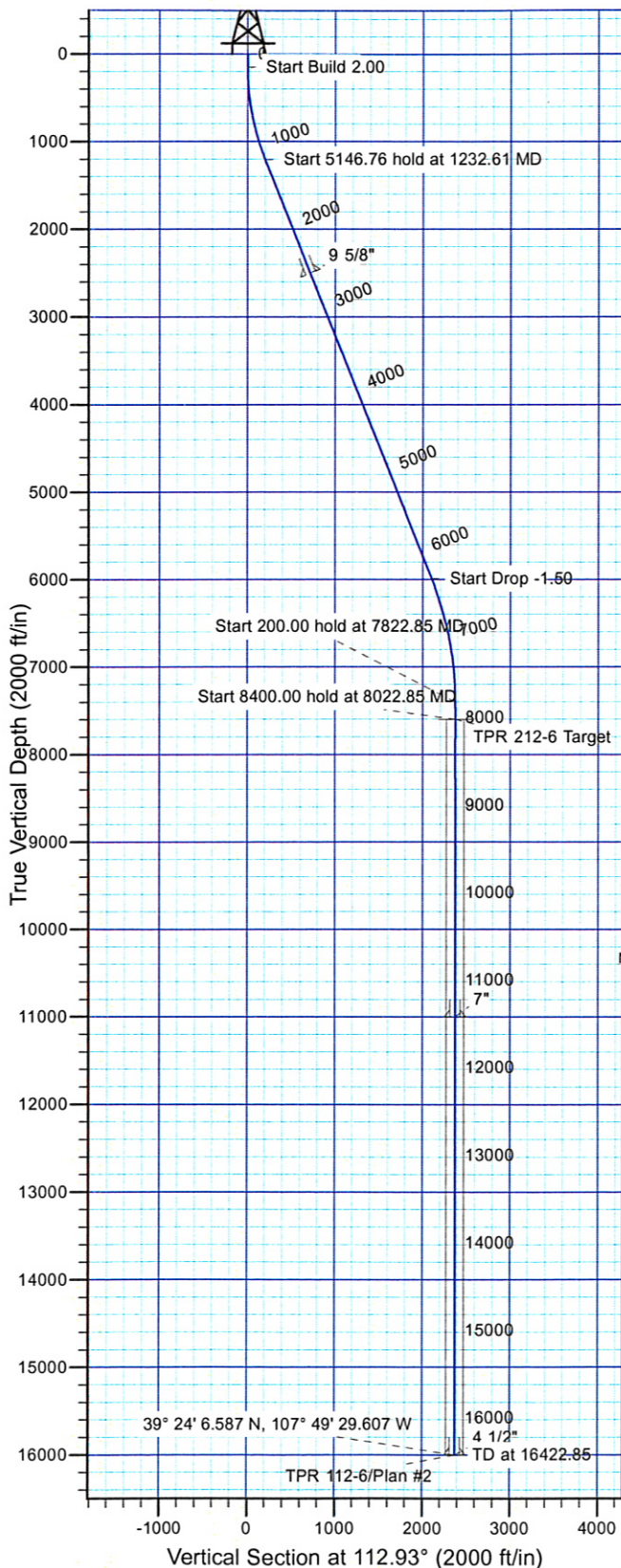
Well Details: TPR 112-6

TVD Reference: 9131' GL & 24' RKB @ 9155.00ft (RKB Elevation Ground Level: 9131.00
+N/-S +E/-W Northing Easting Latitude Longitude Slot
0.00 0.00 1580632.08 2340949.90 39° 24' 15.718 N 107° 49' 57.420 W A3



Azimuths to True North
Magnetic North: 10.42°

Magnetic Field
Strength: 52318.9snT
Dip Angle: 65.73°
Date: 3/29/2010
Model: IGRF2010



FORMATION TOP DETAILS

No formation data is available

Plan: Plan #2

17:39, July 17 2013

Created By: Janie Collins

PROJECT DETAILS: Garfield County, CO

Geodetic System: US State Plane 1983
Datum: North American Datum 1983
Ellipsoid: GRS 1980
Zone: Colorado Central Zone

System Datum: Mean Sea Level

SECTION DETAILS

Sec	MD	Inc	Azi	TVD	+N/-S	+E/-W	Dleg	TFace	VSec	Target
1	0.00	0.00	0.00	0.00	0.00	0.00	0.00	0.00	0.00	
2	150.00	0.00	0.00	150.00	0.00	0.00	0.00	0.00	0.00	
3	1232.61	21.65	112.93	1207.03	-78.77	186.16	2.00	112.93	202.14	
4	6379.37	21.65	112.93	5990.63	-818.75	1935.06	0.00	0.00	0.00	
5	7822.85	0.00	0.00	7400.00	-923.77	2183.28	1.50	180.00	2370.66	
6	8022.85	0.00	0.00	7600.00	-923.77	2183.28	0.00	0.00	2370.66	TPR 212-6 Target
7	16422.85	0.00	0.00	16000.00	-923.77	2183.28	0.00	0.00	2370.66	