

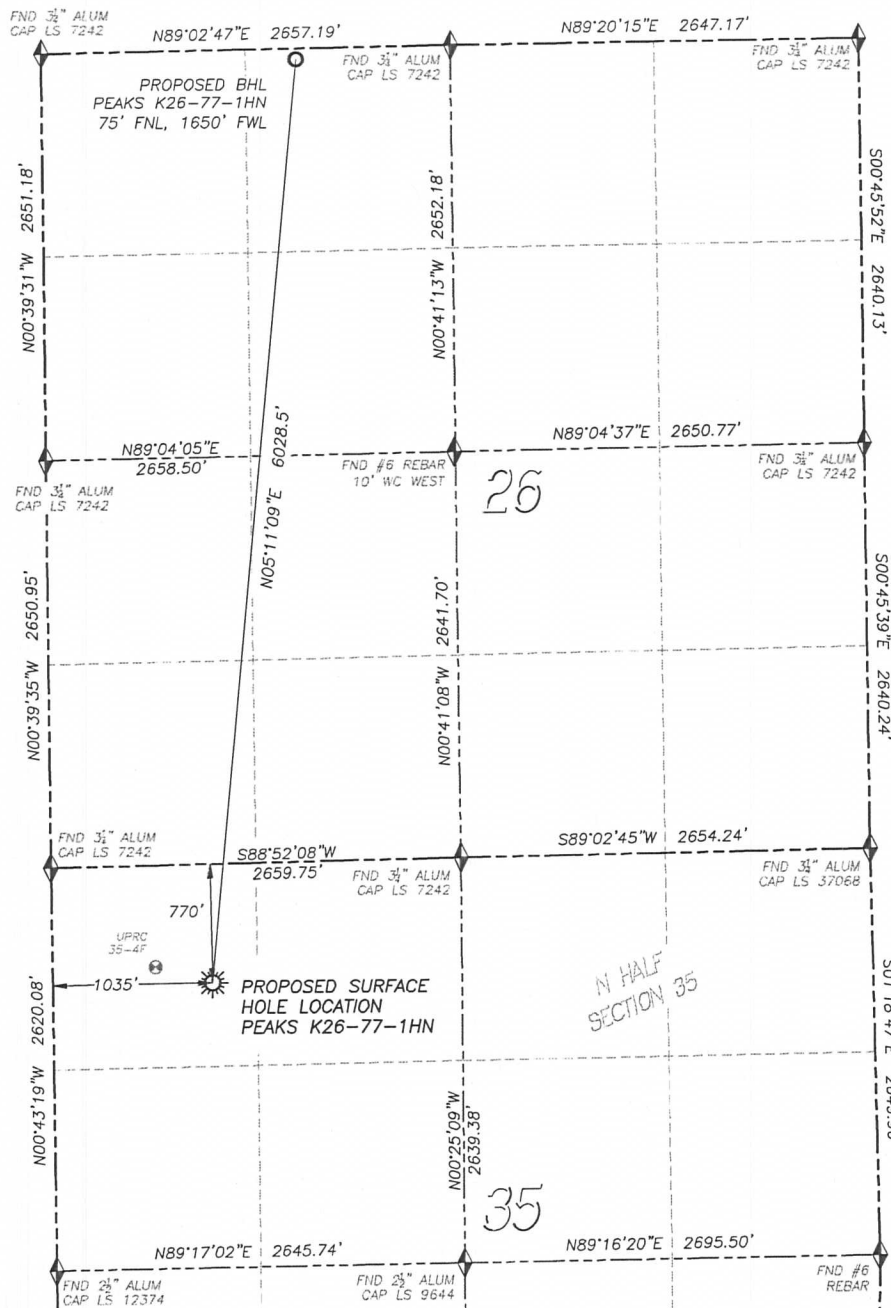
DALEY LAND SURVEYING, INC.

PARKER, CO. 80134

303 953 9841

WELL LOCATION CERTIFICATE PEAKS K26-77-1HN

SECTION 35, TOWNSHIP 4 NORTH, RANGE 66 WEST OF THE 6TH PRINCIPAL MERIDIAN

**NAD 83 LATITUDE AND LONGITUDE**

PEAKS K26-77-1HN

SURFACE HOLE:

LATITUDE: N40.27347°

LONGITUDE: W104.75015°

ELEVATION: 4787'

FOOTAGE: 770' FNL, 1035' FWL

PDOP: 1.3

QTR/QTR: NW4/NW4 SEC 35

PROP LINE: 293'± EAST

BOTTOM HOLE:

LATITUDE: N40.28994°

LONGITUDE: W104.74802°

FOOTAGE: 75' FNL, 1650' FWL
OF SECTION 26**NEAREST EXISTING WELL:**

UPRC 35-4F SURFACE HOLE

LATITUDE: N40.27377°

LONGITUDE: W104.75147°

ELEVATION: 4785'

383' NORTHWEST

NOTES:

- 1) BEARINGS FOR THIS MAP ARE ASSUMED AND BASED UPON GPS OBSERVATIONS MADE BETWEEN MONUMENTS LOCATED AT THE NORTHWEST CORNER AND NORTH QUARTER CORNER OF SECTION 35, T.4N., R.66W.
- 2) HORIZONTAL DATUM IS NAD83.
- 3) VERTICAL DATUM IS NAVD88 AND ORIGINATES FROM THE LOCAL C.O.R.S. NETWORK, UTILIZING THE GEOID09 MODEL.
- 4) SEE LOCATION DRAWING FOR VISIBLE IMPROVEMENTS WITHIN 400' OF PROPOSED DISTURBED AREA.
- 5) SURFACE USE: PASTURE.

LEGEND

- ◆ FOUND MONUMENT AS DESCRIBED
- ☀ PROPOSED WELL
- ⊙ EXISTING WELL
- BOTTOM HOLE
- ⊘ ABANDONED WELL
- ◇ CALCULATED POSITION

0 600 1200
SCALE: 1" = 1200'

IN ACCORDANCE WITH A REQUEST FROM BRIAN JAMES OF NOBLE ENERGY INC., DALEY LAND SURVEYING, INC. HAS DETERMINED THE SURFACE LOCATION OF THE PEAKS K26-77-1HN WELL TO BE 770' FNL, 1035' FWL, AS MEASURED AT NINETY (90) DEGREES FROM THE SECTION LINES OF SECTION 35, TOWNSHIP 4 NORTH, RANGE 66 WEST OF THE 6TH PRINCIPAL MERIDIAN, WELD COUNTY, COLORADO. THE BOTTOM HOLE LOCATION, PROVIDED BY THE CLIENT, IS TO BE 75' FNL, 1650' FWL OF SECTION 26, T.4N., R.66W.

I HEREBY CERTIFY THAT THIS WELL LOCATION CERTIFICATE WAS PREPARED BY ME OR UNDER MY DIRECT SUPERVISION, THAT THE WORK WAS COMPLETED ON 2/4/2013 FOR AND ON BEHALF OF NOBLE ENERGY, INC., AND THAT THIS MAP DOES NOT REPRESENT A BOUNDARY SURVEY, IT IS NOT A LAND SURVEY PLAT OR AN IMPROVEMENT SURVEY PLAT AND IT IS NOT TO BE RELIED UPON FOR THE ESTABLISHMENT OF FENCE, BUILDING OR OTHER FUTURE IMPROVEMENT LINES.



NOTICE: According to Colorado law you MUST commence any legal action based upon any defect in this W.L.C. within three years after you first discover such defect. In no event may any action based upon any such defect in this W.L.C. be commenced more than ten years from the date of the certification shown herein.

DALEY LAND SURVEYING, INC. PARKER, CO. 80134 303 953 9841

SITE SKETCH PEAKS K26-77-1HN
OFFSET WELL DATA

SECTION 35, TOWNSHIP 4 NORTH, RANGE 66 WEST OF THE 6TH PRINCIPAL MERIDIAN

Well Name		Qtr - Qtr	Footage		Latitude	Longitude	Elevation
UPRC 35-4F	1	NW NW 35	660' FNL	668' FWL	40.27377	-104.75147	4785
UPRC 35-3F	2	NE NW 35	486' FNL	1831' FWL	40.27428	-104.74731	4793
CECIL K35-29	3	SW SW 26	182' FSL	1211' FWL	40.27609	-104.74954	4781
CECIL K35-30	4	SW SW 26	230' FSL	1210' FWL	40.27622	-104.74954	4780
SCHWAB 26-13F	5	SW SW 26	852' FSL	819' FWL	40.27792	-104.75095	4777
SCHWAB 26-14F	6	SE SW 26	806' FSL	1996' FWL	40.27783	-104.74673	4779
CHRIS LORENZ 1	7	NE SW 26	2002' FSL	2004' FWL	40.28111	-104.74672	4768
SCHWAB 26-12F	8	NW SW 26	1992' FSL	515' FWL	40.28104	-104.75205	4766
SCHWAB 26-5F	9	SW NW 26	1948' FNL	868' FWL	40.28478	-104.75080	4756
SCHWAB 26-6F	10	SE NW 26	1982' FNL	2187' FWL	40.28472	-104.74608	4757
CHRIS LORENZ A 1	11	NE NW 26	468' FNL	1980' FWL	40.28887	-104.74683	4739
SCHWAB 26-4F	12	NW NW 26	667' FNL	665' FWL	40.28829	-104.75154	4741