

# Condor Energy

Well Name: **Wickstrom 18-5H**

Surface Location: Wickstrom 18-2H Pad Sec.18-T6N-R60W  
North American Datum 1983 , US State Plane 1983 , Colorado Northern Zone

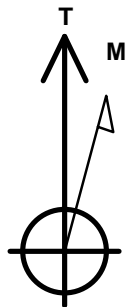
Ground Elevation: 4700.8

+N/-S	+E/-W	Northing	Easting	Latitude	Longitude	Slot
0.0	0.0	1426045.02	3377822.74	40.494950	-104.141460	

RKB - 12.5' WELL @ 4713.3ft (RKB - 12.5')

## WELLBORE TARGET DETAILS

Name	TVD	+N/-S	+E/-W	Shape
SECTION LINE	-4.2	255.8	1538.8	Polygon
SHL 253'FNL & 1660'FWL, Sec.18	1.0	0.0	0.0	Point
HARDLINE 600' BHL	1.7	10126.1	-1191.6	Polygon
HARDLINE 600' SHL	1.7	854.4	1538.8	Polygon
BHL 660'FNL & 1866'FWL, Sec.6	6100.0	10066.2	75.1	Point
Landing Pt. 660'FSL & 1909'FWL, Sec.7	6100.0	914.4	236.4	Point



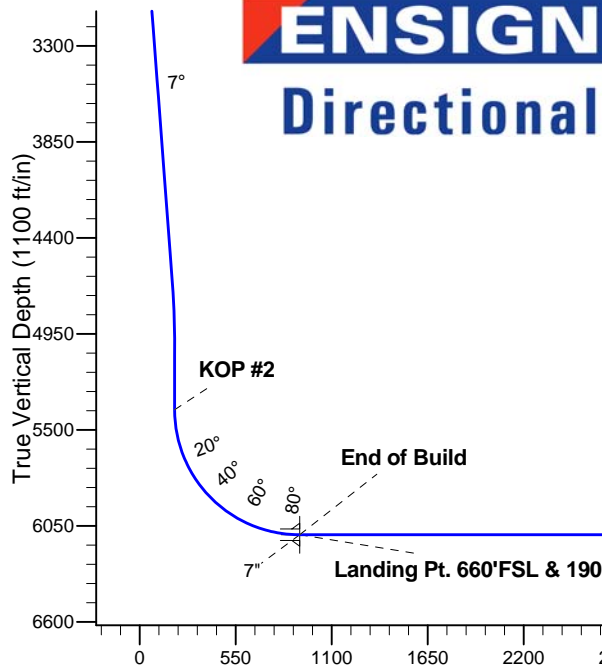
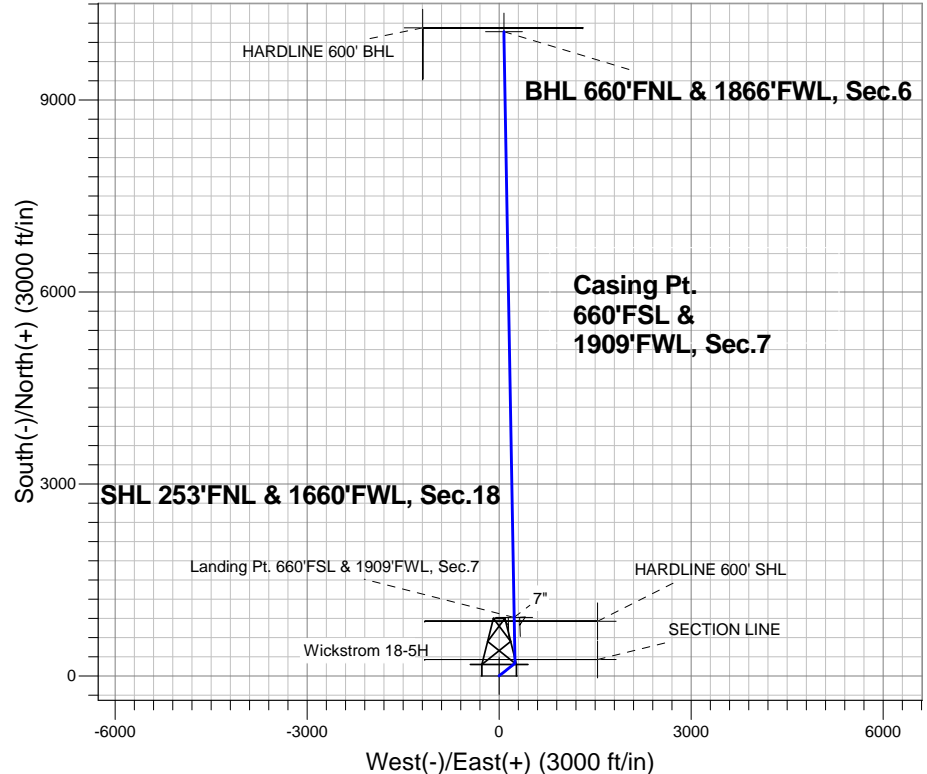
Azimuths to True North  
Magnetic North: 8.25°

Magnetic Field  
Strength: 53024.4snT  
Dip Angle: 67.15°  
Date: 7/24/2013  
Model: IGRF2010

Wickstrom 18-2H Pad Sec.18-T6N-R60W  
Wickstrom 18-5H  
Plan #1 (7-24-13)  
8:42, July 25 2013

## ANNOTATIONS

TVD	MD	Annotation
2000.0	2000.0	KOP #1
5383.8	5402.1	KOP #2
6100.0	6527.5	End of Build



## SECTION DETAILS

Sec	MD	Inc	Azi	TVD	+N/-S	+E/-W	DLeg	TFace	VSec	Target
1	0.0	0.00	0.00	0.0	0.0	0.0	0.00	0.00	0.0	
2	2000.0	0.00	0.00	2000.0	0.0	0.0	0.00	0.00	0.0	
3	2343.1	6.86	51.73	2342.3	12.7	16.1	2.00	51.73	12.8	
4	4675.2	6.86	51.73	4657.7	185.3	234.9	0.00	0.00	187.0	
5	5018.3	0.00	0.00	5000.0	198.0	251.0	2.00	180.00	199.9	
6	5402.1	0.00	0.00	5383.8	198.0	251.0	0.00	0.00	199.9	
7	6527.1	90.00	358.83	6100.0	914.1	236.4	8.00	358.83	915.8	
8	6527.5	90.00	358.83	6100.0	914.4	236.4	0.00	0.00	916.2	Landing Pt. 660'FSL & 1909'FWL, Sec.7
9	6535.4	90.00	358.99	6100.0	922.3	236.3	2.00	90.00	924.1	
10	15680.7	90.00	358.99	6100.0	10066.2	75.1	0.00	0.00	10066.4	BHL 660'FNL & 1866'FWL, Sec.6

BHL 660'FNL & 1866'FWL, Sec.6

Vertical Section at 0.43° (1100 ft/in)



## **Condor Energy**

**SEC.18-T6N-R60W**

**Wickstrom 18-2H Pad Sec.18-T6N-R60W**

**Wickstrom 18-5H**

**Wellbore #1**

**Plan: Plan #1 (7-24-13)**

## **Standard Planning Report**

**25 July, 2013**

Plan Sections										
Measured Depth (ft)	Inclination (°)	Azimuth (°)	Vertical Depth (ft)	+N/-S (ft)	+E/-W (ft)	Dogleg Rate (°/100ft)	Build Rate (°/100ft)	Turn Rate (°/100ft)	TFO (°)	Target
0.0	0.00	0.00	0.0	0.0	0.0	0.00	0.00	0.00	0.00	
2,000.0	0.00	0.00	2,000.0	0.0	0.0	0.00	0.00	0.00	0.00	
2,343.1	6.86	51.73	2,342.3	12.7	16.1	2.00	2.00	0.00	51.73	
4,675.2	6.86	51.73	4,657.7	185.3	234.9	0.00	0.00	0.00	0.00	
5,018.3	0.00	0.00	5,000.0	198.0	251.0	2.00	-2.00	0.00	180.00	
5,402.1	0.00	0.00	5,383.8	198.0	251.0	0.00	0.00	0.00	0.00	
6,527.1	90.00	358.83	6,100.0	914.1	236.4	8.00	8.00	0.00	358.83	
6,527.5	90.00	358.83	6,100.0	914.4	236.4	0.00	0.00	0.00	0.00	Landing Pt. 660'FSI
6,535.4	90.00	358.99	6,100.0	922.3	236.3	2.00	0.00	2.00	90.00	
15,680.7	90.00	358.99	6,100.0	10,066.2	75.1	0.00	0.00	0.00	0.00	BHL 660'FNL & 186'

<b>Database:</b>	Landmark	<b>Local Co-ordinate Reference:</b>	Well Wickstrom 18-5H
<b>Company:</b>	Condor Energy	<b>TVD Reference:</b>	WELL @ 4713.3ft (RKB - 12.5')
<b>Project:</b>	SEC.18-T6N-R60W	<b>MD Reference:</b>	WELL @ 4713.3ft (RKB - 12.5')
<b>Site:</b>	Wickstrom 18-2H Pad Sec.18-T6N-R60W	<b>North Reference:</b>	True
<b>Well:</b>	Wickstrom 18-5H	<b>Survey Calculation Method:</b>	Minimum Curvature
<b>Wellbore:</b>	Wellbore #1		
<b>Design:</b>	Plan #1 (7-24-13)		

Planned Survey									
Measured Depth (ft)	Inclination (°)	Azimuth (°)	Vertical Depth (ft)	+N/-S (ft)	+E/-W (ft)	Vertical Section (ft)	Dogleg Rate (°/100ft)	Build Rate (°/100ft)	Turn Rate (°/100ft)
0.0	0.00	0.00	0.0	0.0	0.0	0.0	0.00	0.00	0.00
<b>SECTION LINE</b>									
1.0	0.00	0.00	1.0	0.0	0.0	0.0	0.00	0.00	0.00
<b>SHL 253'FNL &amp; 1660'FWL, Sec.18</b>									
1.7	0.00	0.00	1.7	0.0	0.0	0.0	0.00	0.00	0.00
<b>HARDLINE 600' SHL</b>									
100.0	0.00	0.00	100.0	0.0	0.0	0.0	0.00	0.00	0.00
200.0	0.00	0.00	200.0	0.0	0.0	0.0	0.00	0.00	0.00
300.0	0.00	0.00	300.0	0.0	0.0	0.0	0.00	0.00	0.00
400.0	0.00	0.00	400.0	0.0	0.0	0.0	0.00	0.00	0.00
500.0	0.00	0.00	500.0	0.0	0.0	0.0	0.00	0.00	0.00
600.0	0.00	0.00	600.0	0.0	0.0	0.0	0.00	0.00	0.00
700.0	0.00	0.00	700.0	0.0	0.0	0.0	0.00	0.00	0.00
800.0	0.00	0.00	800.0	0.0	0.0	0.0	0.00	0.00	0.00
900.0	0.00	0.00	900.0	0.0	0.0	0.0	0.00	0.00	0.00
1,000.0	0.00	0.00	1,000.0	0.0	0.0	0.0	0.00	0.00	0.00
1,100.0	0.00	0.00	1,100.0	0.0	0.0	0.0	0.00	0.00	0.00
1,200.0	0.00	0.00	1,200.0	0.0	0.0	0.0	0.00	0.00	0.00
1,300.0	0.00	0.00	1,300.0	0.0	0.0	0.0	0.00	0.00	0.00
1,400.0	0.00	0.00	1,400.0	0.0	0.0	0.0	0.00	0.00	0.00
1,500.0	0.00	0.00	1,500.0	0.0	0.0	0.0	0.00	0.00	0.00
1,600.0	0.00	0.00	1,600.0	0.0	0.0	0.0	0.00	0.00	0.00
1,700.0	0.00	0.00	1,700.0	0.0	0.0	0.0	0.00	0.00	0.00
1,800.0	0.00	0.00	1,800.0	0.0	0.0	0.0	0.00	0.00	0.00
1,900.0	0.00	0.00	1,900.0	0.0	0.0	0.0	0.00	0.00	0.00
2,000.0	0.00	0.00	2,000.0	0.0	0.0	0.0	0.00	0.00	0.00
<b>KOP #1</b>									
2,100.0	2.00	51.73	2,100.0	1.1	1.4	1.1	2.00	2.00	0.00
2,200.0	4.00	51.73	2,199.8	4.3	5.5	4.4	2.00	2.00	0.00
2,300.0	6.00	51.73	2,299.5	9.7	12.3	9.8	2.00	2.00	0.00
2,343.1	6.86	51.73	2,342.3	12.7	16.1	12.8	2.00	2.00	0.00
2,400.0	6.86	51.73	2,398.8	16.9	21.4	17.1	0.00	0.00	0.00
2,500.0	6.86	51.73	2,498.1	24.3	30.8	24.5	0.00	0.00	0.00
2,600.0	6.86	51.73	2,597.3	31.7	40.2	32.0	0.00	0.00	0.00
2,700.0	6.86	51.73	2,696.6	39.1	49.6	39.5	0.00	0.00	0.00
2,800.0	6.86	51.73	2,795.9	46.5	59.0	47.0	0.00	0.00	0.00
2,900.0	6.86	51.73	2,895.2	53.9	68.4	54.4	0.00	0.00	0.00
3,000.0	6.86	51.73	2,994.5	61.3	77.7	61.9	0.00	0.00	0.00
3,100.0	6.86	51.73	3,093.8	68.7	87.1	69.4	0.00	0.00	0.00
3,200.0	6.86	51.73	3,193.0	76.1	96.5	76.8	0.00	0.00	0.00
3,300.0	6.86	51.73	3,292.3	83.5	105.9	84.3	0.00	0.00	0.00
3,400.0	6.86	51.73	3,391.6	90.9	115.3	91.8	0.00	0.00	0.00
3,500.0	6.86	51.73	3,490.9	98.3	124.6	99.2	0.00	0.00	0.00
3,600.0	6.86	51.73	3,590.2	105.7	134.0	106.7	0.00	0.00	0.00
3,700.0	6.86	51.73	3,689.5	113.1	143.4	114.2	0.00	0.00	0.00
3,800.0	6.86	51.73	3,788.7	120.5	152.8	121.7	0.00	0.00	0.00
3,900.0	6.86	51.73	3,888.0	127.9	162.2	129.1	0.00	0.00	0.00
4,000.0	6.86	51.73	3,987.3	135.3	171.5	136.6	0.00	0.00	0.00
4,100.0	6.86	51.73	4,086.6	142.7	180.9	144.1	0.00	0.00	0.00
4,200.0	6.86	51.73	4,185.9	150.1	190.3	151.5	0.00	0.00	0.00
4,300.0	6.86	51.73	4,285.2	157.5	199.7	159.0	0.00	0.00	0.00
4,400.0	6.86	51.73	4,384.4	164.9	209.1	166.5	0.00	0.00	0.00
4,500.0	6.86	51.73	4,483.7	172.3	218.4	173.9	0.00	0.00	0.00
4,600.0	6.86	51.73	4,583.0	179.7	227.8	181.4	0.00	0.00	0.00

<b>Database:</b>	Landmark	<b>Local Co-ordinate Reference:</b>	Well Wickstrom 18-5H
<b>Company:</b>	Condor Energy	<b>TVD Reference:</b>	WELL @ 4713.3ft (RKB - 12.5')
<b>Project:</b>	SEC.18-T6N-R60W	<b>MD Reference:</b>	WELL @ 4713.3ft (RKB - 12.5')
<b>Site:</b>	Wickstrom 18-2H Pad Sec.18-T6N-R60W	<b>North Reference:</b>	True
<b>Well:</b>	Wickstrom 18-5H	<b>Survey Calculation Method:</b>	Minimum Curvature
<b>Wellbore:</b>	Wellbore #1		
<b>Design:</b>	Plan #1 (7-24-13)		

Planned Survey									
Measured Depth (ft)	Inclination (°)	Azimuth (°)	Vertical Depth (ft)	+N/-S (ft)	+E/-W (ft)	Vertical Section (ft)	Dogleg Rate (°/100ft)	Build Rate (°/100ft)	Turn Rate (°/100ft)
4,675.2	6.86	51.73	4,657.7	185.3	234.9	187.0	0.00	0.00	0.00
4,700.0	6.37	51.73	4,682.3	187.1	237.1	188.8	2.00	-2.00	0.00
4,800.0	4.37	51.73	4,781.9	192.8	244.5	194.7	2.00	-2.00	0.00
4,900.0	2.37	51.73	4,881.7	196.5	249.1	198.3	2.00	-2.00	0.00
5,000.0	0.37	51.73	4,981.7	198.0	251.0	199.8	2.00	-2.00	0.00
5,018.3	0.00	0.00	5,000.0	198.0	251.0	199.9	2.00	-2.00	0.00
5,100.0	0.00	0.00	5,081.7	198.0	251.0	199.9	0.00	0.00	0.00
5,200.0	0.00	0.00	5,181.7	198.0	251.0	199.9	0.00	0.00	0.00
5,300.0	0.00	0.00	5,281.7	198.0	251.0	199.9	0.00	0.00	0.00
5,400.0	0.00	0.00	5,381.7	198.0	251.0	199.9	0.00	0.00	0.00
5,402.1	0.00	0.00	5,383.8	198.0	251.0	199.9	0.00	0.00	0.00
<b>KOP #2</b>									
5,500.0	7.83	358.83	5,481.3	204.7	250.9	206.5	8.00	8.00	0.00
5,600.0	15.83	358.83	5,579.1	225.1	250.4	227.0	8.00	8.00	0.00
5,700.0	23.83	358.83	5,673.1	259.0	249.8	260.9	8.00	8.00	0.00
5,800.0	31.83	358.83	5,761.5	305.7	248.8	307.5	8.00	8.00	0.00
5,900.0	39.83	358.83	5,842.5	364.1	247.6	366.0	8.00	8.00	0.00
6,000.0	47.83	358.83	5,914.6	433.3	246.2	435.1	8.00	8.00	0.00
6,100.0	55.83	358.83	5,976.4	511.9	244.6	513.7	8.00	8.00	0.00
6,200.0	63.83	358.83	6,026.6	598.2	242.8	600.0	8.00	8.00	0.00
6,300.0	71.83	358.83	6,064.3	690.7	241.0	692.5	8.00	8.00	0.00
6,400.0	79.83	358.83	6,088.7	787.6	239.0	789.4	8.00	8.00	0.00
6,500.0	87.83	358.83	6,099.5	886.9	237.0	888.7	8.00	8.00	0.00
6,527.1	90.00	358.83	6,100.0	914.1	236.4	915.8	8.00	8.00	0.00
6,527.5	90.00	358.83	6,100.0	914.4	236.4	916.2	0.00	0.00	0.00
<b>End of Build - 7" - Landing Pt. 660'FSL &amp; 1909'FWL, Sec.7</b>									
6,535.4	90.00	358.99	6,100.0	922.3	236.3	924.1	2.00	0.00	2.00
6,600.0	90.00	358.99	6,100.0	986.9	235.1	988.6	0.00	0.00	0.00
6,700.0	90.00	358.99	6,100.0	1,086.9	233.4	1,088.6	0.00	0.00	0.00
6,800.0	90.00	358.99	6,100.0	1,186.9	231.6	1,188.6	0.00	0.00	0.00
6,900.0	90.00	358.99	6,100.0	1,286.8	229.8	1,288.5	0.00	0.00	0.00
7,000.0	90.00	358.99	6,100.0	1,386.8	228.1	1,388.5	0.00	0.00	0.00
7,100.0	90.00	358.99	6,100.0	1,486.8	226.3	1,488.5	0.00	0.00	0.00
7,200.0	90.00	358.99	6,100.0	1,586.8	224.5	1,588.4	0.00	0.00	0.00
7,300.0	90.00	358.99	6,100.0	1,686.8	222.8	1,688.4	0.00	0.00	0.00
7,400.0	90.00	358.99	6,100.0	1,786.8	221.0	1,788.4	0.00	0.00	0.00
7,500.0	90.00	358.99	6,100.0	1,886.7	219.3	1,888.3	0.00	0.00	0.00
7,600.0	90.00	358.99	6,100.0	1,986.7	217.5	1,988.3	0.00	0.00	0.00
7,700.0	90.00	358.99	6,100.0	2,086.7	215.7	2,088.3	0.00	0.00	0.00
7,800.0	90.00	358.99	6,100.0	2,186.7	214.0	2,188.2	0.00	0.00	0.00
7,900.0	90.00	358.99	6,100.0	2,286.7	212.2	2,288.2	0.00	0.00	0.00
8,000.0	90.00	358.99	6,100.0	2,386.7	210.4	2,388.2	0.00	0.00	0.00
8,100.0	90.00	358.99	6,100.0	2,486.7	208.7	2,488.1	0.00	0.00	0.00
8,200.0	90.00	358.99	6,100.0	2,586.6	206.9	2,588.1	0.00	0.00	0.00
8,300.0	90.00	358.99	6,100.0	2,686.6	205.2	2,688.1	0.00	0.00	0.00
8,400.0	90.00	358.99	6,100.0	2,786.6	203.4	2,788.0	0.00	0.00	0.00
8,500.0	90.00	358.99	6,100.0	2,886.6	201.6	2,888.0	0.00	0.00	0.00
8,600.0	90.00	358.99	6,100.0	2,986.6	199.9	2,988.0	0.00	0.00	0.00
8,700.0	90.00	358.99	6,100.0	3,086.6	198.1	3,088.0	0.00	0.00	0.00
8,800.0	90.00	358.99	6,100.0	3,186.5	196.3	3,187.9	0.00	0.00	0.00
8,900.0	90.00	358.99	6,100.0	3,286.5	194.6	3,287.9	0.00	0.00	0.00
9,000.0	90.00	358.99	6,100.0	3,386.5	192.8	3,387.9	0.00	0.00	0.00
9,100.0	90.00	358.99	6,100.0	3,486.5	191.1	3,487.8	0.00	0.00	0.00

<b>Database:</b>	Landmark	<b>Local Co-ordinate Reference:</b>	Well Wickstrom 18-5H
<b>Company:</b>	Condor Energy	<b>TVD Reference:</b>	WELL @ 4713.3ft (RKB - 12.5')
<b>Project:</b>	SEC.18-T6N-R60W	<b>MD Reference:</b>	WELL @ 4713.3ft (RKB - 12.5')
<b>Site:</b>	Wickstrom 18-2H Pad Sec.18-T6N-R60W	<b>North Reference:</b>	True
<b>Well:</b>	Wickstrom 18-5H	<b>Survey Calculation Method:</b>	Minimum Curvature
<b>Wellbore:</b>	Wellbore #1		
<b>Design:</b>	Plan #1 (7-24-13)		

Planned Survey									
Measured Depth (ft)	Inclination (°)	Azimuth (°)	Vertical Depth (ft)	+N/-S (ft)	+E/-W (ft)	Vertical Section (ft)	Dogleg Rate (°/100ft)	Build Rate (°/100ft)	Turn Rate (°/100ft)
9,200.0	90.00	358.99	6,100.0	3,586.5	189.3	3,587.8	0.00	0.00	0.00
9,300.0	90.00	358.99	6,100.0	3,686.5	187.5	3,687.8	0.00	0.00	0.00
9,400.0	90.00	358.99	6,100.0	3,786.5	185.8	3,787.7	0.00	0.00	0.00
9,500.0	90.00	358.99	6,100.0	3,886.4	184.0	3,887.7	0.00	0.00	0.00
9,600.0	90.00	358.99	6,100.0	3,986.4	182.2	3,987.7	0.00	0.00	0.00
9,700.0	90.00	358.99	6,100.0	4,086.4	180.5	4,087.6	0.00	0.00	0.00
9,800.0	90.00	358.99	6,100.0	4,186.4	178.7	4,187.6	0.00	0.00	0.00
9,900.0	90.00	358.99	6,100.0	4,286.4	177.0	4,287.6	0.00	0.00	0.00
10,000.0	90.00	358.99	6,100.0	4,386.4	175.2	4,387.5	0.00	0.00	0.00
10,100.0	90.00	358.99	6,100.0	4,486.3	173.4	4,487.5	0.00	0.00	0.00
10,200.0	90.00	358.99	6,100.0	4,586.3	171.7	4,587.5	0.00	0.00	0.00
10,300.0	90.00	358.99	6,100.0	4,686.3	169.9	4,687.5	0.00	0.00	0.00
10,400.0	90.00	358.99	6,100.0	4,786.3	168.1	4,787.4	0.00	0.00	0.00
10,500.0	90.00	358.99	6,100.0	4,886.3	166.4	4,887.4	0.00	0.00	0.00
10,600.0	90.00	358.99	6,100.0	4,986.3	164.6	4,987.4	0.00	0.00	0.00
10,700.0	90.00	358.99	6,100.0	5,086.3	162.9	5,087.3	0.00	0.00	0.00
10,800.0	90.00	358.99	6,100.0	5,186.2	161.1	5,187.3	0.00	0.00	0.00
10,900.0	90.00	358.99	6,100.0	5,286.2	159.3	5,287.3	0.00	0.00	0.00
11,000.0	90.00	358.99	6,100.0	5,386.2	157.6	5,387.2	0.00	0.00	0.00
11,100.0	90.00	358.99	6,100.0	5,486.2	155.8	5,487.2	0.00	0.00	0.00
11,200.0	90.00	358.99	6,100.0	5,586.2	154.0	5,587.2	0.00	0.00	0.00
11,300.0	90.00	358.99	6,100.0	5,686.2	152.3	5,687.1	0.00	0.00	0.00
11,400.0	90.00	358.99	6,100.0	5,786.1	150.5	5,787.1	0.00	0.00	0.00
11,500.0	90.00	358.99	6,100.0	5,886.1	148.8	5,887.1	0.00	0.00	0.00
11,600.0	90.00	358.99	6,100.0	5,986.1	147.0	5,987.0	0.00	0.00	0.00
11,700.0	90.00	358.99	6,100.0	6,086.1	145.2	6,087.0	0.00	0.00	0.00
11,800.0	90.00	358.99	6,100.0	6,186.1	143.5	6,187.0	0.00	0.00	0.00
11,900.0	90.00	358.99	6,100.0	6,286.1	141.7	6,286.9	0.00	0.00	0.00
12,000.0	90.00	358.99	6,100.0	6,386.0	139.9	6,386.9	0.00	0.00	0.00
12,100.0	90.00	358.99	6,100.0	6,486.0	138.2	6,486.9	0.00	0.00	0.00
12,200.0	90.00	358.99	6,100.0	6,586.0	136.4	6,586.9	0.00	0.00	0.00
12,300.0	90.00	358.99	6,100.0	6,686.0	134.6	6,686.8	0.00	0.00	0.00
12,400.0	90.00	358.99	6,100.0	6,786.0	132.9	6,786.8	0.00	0.00	0.00
12,500.0	90.00	358.99	6,100.0	6,886.0	131.1	6,886.8	0.00	0.00	0.00
12,600.0	90.00	358.99	6,100.0	6,986.0	129.4	6,986.7	0.00	0.00	0.00
12,700.0	90.00	358.99	6,100.0	7,085.9	127.6	7,086.7	0.00	0.00	0.00
12,800.0	90.00	358.99	6,100.0	7,185.9	125.8	7,186.7	0.00	0.00	0.00
12,900.0	90.00	358.99	6,100.0	7,285.9	124.1	7,286.6	0.00	0.00	0.00
13,000.0	90.00	358.99	6,100.0	7,385.9	122.3	7,386.6	0.00	0.00	0.00
13,100.0	90.00	358.99	6,100.0	7,485.9	120.5	7,486.6	0.00	0.00	0.00
13,200.0	90.00	358.99	6,100.0	7,585.9	118.8	7,586.5	0.00	0.00	0.00
13,300.0	90.00	358.99	6,100.0	7,685.8	117.0	7,686.5	0.00	0.00	0.00
13,400.0	90.00	358.99	6,100.0	7,785.8	115.3	7,786.5	0.00	0.00	0.00
13,500.0	90.00	358.99	6,100.0	7,885.8	113.5	7,886.4	0.00	0.00	0.00
13,600.0	90.00	358.99	6,100.0	7,985.8	111.7	7,986.4	0.00	0.00	0.00
13,700.0	90.00	358.99	6,100.0	8,085.8	110.0	8,086.4	0.00	0.00	0.00
13,800.0	90.00	358.99	6,100.0	8,185.8	108.2	8,186.3	0.00	0.00	0.00
13,900.0	90.00	358.99	6,100.0	8,285.8	106.4	8,286.3	0.00	0.00	0.00
14,000.0	90.00	358.99	6,100.0	8,385.7	104.7	8,386.3	0.00	0.00	0.00
14,100.0	90.00	358.99	6,100.0	8,485.7	102.9	8,486.3	0.00	0.00	0.00
14,200.0	90.00	358.99	6,100.0	8,585.7	101.2	8,586.2	0.00	0.00	0.00
14,300.0	90.00	358.99	6,100.0	8,685.7	99.4	8,686.2	0.00	0.00	0.00
14,400.0	90.00	358.99	6,100.0	8,785.7	97.6	8,786.2	0.00	0.00	0.00
14,500.0	90.00	358.99	6,100.0	8,885.7	95.9	8,886.1	0.00	0.00	0.00

Plan Annotations					
	Measured Depth (ft)	Vertical Depth (ft)	Local Coordinates		Comment
			+N/-S (ft)	+E/-W (ft)	
	2,000.0	2,000.0	0.0	0.0	KOP #1
	5,402.1	5,383.8	198.0	251.0	KOP #2
	6,527.5	6,100.0	914.4	236.4	End of Build