

Condor Energy

Well Name: **Wickstrom 18-3H**

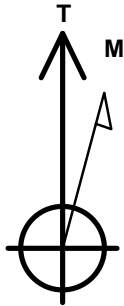
Surface Location: Wickstrom 18-2H Pad Sec.18-T6N-R60W
North American Datum 1983 , US State Plane 1983 , Colorado Northern Zone

Ground Elevation: 4700.3

+N/-S	+E/-W	Northing	Easting	Latitude	Longitude	Slot
0.0	0.0	1426044.08	3377761.56	40.494950	-104.141680	
RKB - 12.5' WELL @ 4712.8ft (RKB - 12.5')						

WELLBORE TARGET DETAILS

Name	TVD	+N/-S	+E/-W	Shape
SECTION LINE	-4.7	255.9	1600.0	Polygon
SHL 253'FNL & 1600'FWL, Sec.18	1.0	0.0	0.0	Point
HARDLINE 600' BHL	1.2	10126.1	-1130.4	Polygon
HARDLINE 600' SHL	1.2	854.4	1600.0	Polygon
BHL 660'FNL & 1263'FWL, Sec. 6	6100.0	10066.2	-467.1	Point
Landing Pt. 660'FSL & 1392'FWL, Sec.7	6100.0	914.4	-219.7	Point



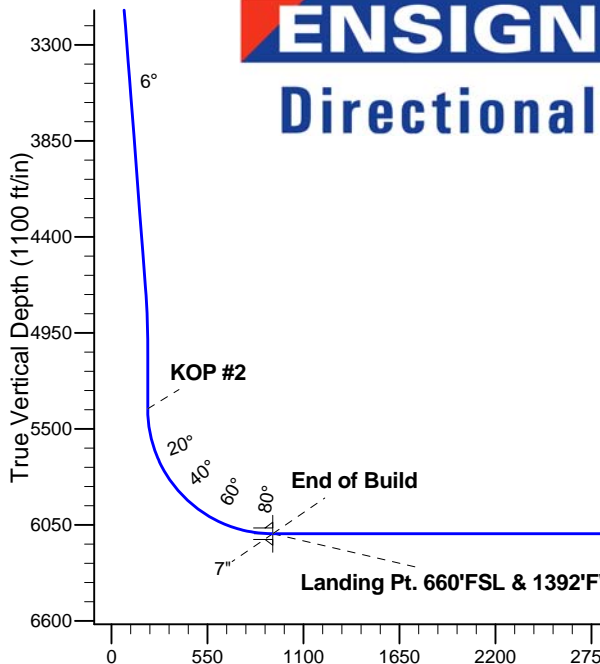
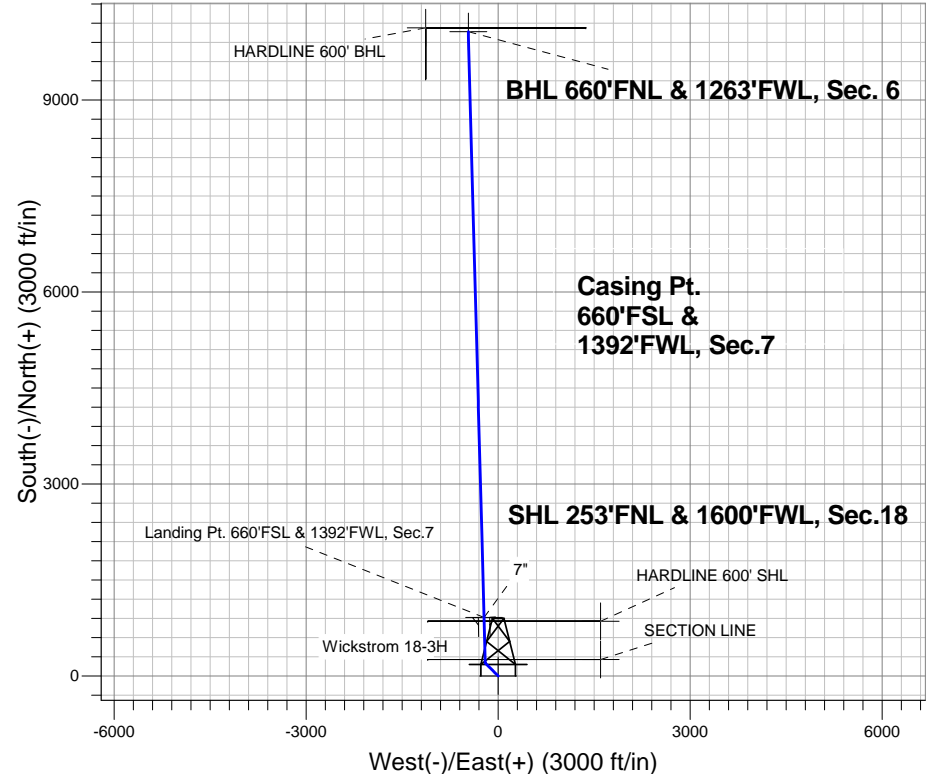
Azimuths to True North
Magnetic North: 8.25°

Magnetic Field
Strength: 53024.4snT
Dip Angle: 67.15°
Date: 7/24/2013
Model: IGRF2010

Wickstrom 18-2H Pad Sec.18-T6N-R60W
Wickstrom 18-3H
Plan #1 (7-24-13)
8:23, July 25 2013

ANNOTATIONS

TVD	MD	Annotation
2000.0	2000.0	KOP #1
5383.8	5397.9	KOP #2
6100.0	6523.5	End of Build



SECTION DETAILS

Sec	MD	Inc	Azi	TVD	+N/-S	+E/-W	DLeg	TFace	VSec	Target
1	0.0	0.00	0.00	0.0	0.0	0.0	0.00	0.00	0.0	
2	2000.0	0.00	0.00	2000.0	0.0	0.0	0.00	0.00	0.0	
3	2297.2	5.94	314.69	2296.6	10.8	-10.9	2.00	314.69	11.3	
4	4716.9	5.94	314.69	4703.4	187.0	-189.1	0.00	0.00	195.6	
5	5014.1	0.00	0.00	5000.0	197.9	-200.0	2.00	180.00	206.9	
6	5397.9	0.00	0.00	5383.8	197.9	-200.0	0.00	0.00	206.9	
7	6522.9	90.00	358.42	6100.0	913.8	-219.7	8.00	358.42	923.0	
8	6523.5	90.00	358.42	6100.0	914.4	-219.7	0.00	0.00	923.6	Landing Pt. 660'FSL & 1392'FWL, Sec.7
9	6524.9	90.00	358.45	6100.0	915.8	-219.8	2.00	90.00	925.0	
10	15678.6	90.00	358.45	6100.0	10066.2	-467.1	0.00	0.00	10077.0	BHL 660'FNL & 1263'FWL, Sec. 6

BHL 660'FNL & 1263'FWL, Sec. 6

Vertical Section at 357.34° (1100 ft/in)



Condor Energy

SEC.18-T6N-R60W

Wickstrom 18-2H Pad Sec.18-T6N-R60W

Wickstrom 18-3H

Wellbore #1

Plan: Plan #1 (7-24-13)

Standard Planning Report

25 July, 2013

Plan Sections										
Measured Depth (ft)	Inclination (°)	Azimuth (°)	Vertical Depth (ft)	+N/-S (ft)	+E/-W (ft)	Dogleg Rate (°/100ft)	Build Rate (°/100ft)	Turn Rate (°/100ft)	TFO (°)	Target
0.0	0.00	0.00	0.0	0.0	0.0	0.00	0.00	0.00	0.00	
2,000.0	0.00	0.00	2,000.0	0.0	0.0	0.00	0.00	0.00	0.00	
2,297.2	5.94	314.69	2,296.6	10.8	-10.9	2.00	2.00	0.00	314.69	
4,716.9	5.94	314.69	4,703.4	187.0	-189.1	0.00	0.00	0.00	0.00	
5,014.1	0.00	0.00	5,000.0	197.9	-200.0	2.00	-2.00	0.00	180.00	
5,397.9	0.00	0.00	5,383.8	197.9	-200.0	0.00	0.00	0.00	0.00	
6,522.9	90.00	358.42	6,100.0	913.8	-219.7	8.00	8.00	0.00	358.42	
6,523.5	90.00	358.42	6,100.0	914.4	-219.7	0.00	0.00	0.00	0.00	Landing Pt. 660'FSI
6,524.9	90.00	358.45	6,100.0	915.8	-219.8	2.00	0.00	2.00	90.00	
15,678.6	90.00	358.45	6,100.0	10,066.2	-467.1	0.00	0.00	0.00	0.00	BHL 660'FNL & 1260'FSI

Database:	Landmark	Local Co-ordinate Reference:	Well Wickstrom 18-3H
Company:	Condor Energy	TVD Reference:	WELL @ 4712.8ft (RKB - 12.5')
Project:	SEC.18-T6N-R60W	MD Reference:	WELL @ 4712.8ft (RKB - 12.5')
Site:	Wickstrom 18-2H Pad Sec.18-T6N-R60W	North Reference:	True
Well:	Wickstrom 18-3H	Survey Calculation Method:	Minimum Curvature
Wellbore:	Wellbore #1		
Design:	Plan #1 (7-24-13)		

Planned Survey									
Measured Depth (ft)	Inclination (°)	Azimuth (°)	Vertical Depth (ft)	+N/-S (ft)	+E/-W (ft)	Vertical Section (ft)	Dogleg Rate (°/100ft)	Build Rate (°/100ft)	Turn Rate (°/100ft)
0.0	0.00	0.00	0.0	0.0	0.0	0.0	0.00	0.00	0.00
SECTION LINE									
1.0	0.00	0.00	1.0	0.0	0.0	0.0	0.00	0.00	0.00
SHL 253'FNL & 1600'FWL, Sec.18									
1.2	0.00	0.00	1.2	0.0	0.0	0.0	0.00	0.00	0.00
HARDLINE 600' SHL									
100.0	0.00	0.00	100.0	0.0	0.0	0.0	0.00	0.00	0.00
200.0	0.00	0.00	200.0	0.0	0.0	0.0	0.00	0.00	0.00
300.0	0.00	0.00	300.0	0.0	0.0	0.0	0.00	0.00	0.00
400.0	0.00	0.00	400.0	0.0	0.0	0.0	0.00	0.00	0.00
500.0	0.00	0.00	500.0	0.0	0.0	0.0	0.00	0.00	0.00
600.0	0.00	0.00	600.0	0.0	0.0	0.0	0.00	0.00	0.00
700.0	0.00	0.00	700.0	0.0	0.0	0.0	0.00	0.00	0.00
800.0	0.00	0.00	800.0	0.0	0.0	0.0	0.00	0.00	0.00
900.0	0.00	0.00	900.0	0.0	0.0	0.0	0.00	0.00	0.00
1,000.0	0.00	0.00	1,000.0	0.0	0.0	0.0	0.00	0.00	0.00
1,100.0	0.00	0.00	1,100.0	0.0	0.0	0.0	0.00	0.00	0.00
1,200.0	0.00	0.00	1,200.0	0.0	0.0	0.0	0.00	0.00	0.00
1,300.0	0.00	0.00	1,300.0	0.0	0.0	0.0	0.00	0.00	0.00
1,400.0	0.00	0.00	1,400.0	0.0	0.0	0.0	0.00	0.00	0.00
1,500.0	0.00	0.00	1,500.0	0.0	0.0	0.0	0.00	0.00	0.00
1,600.0	0.00	0.00	1,600.0	0.0	0.0	0.0	0.00	0.00	0.00
1,700.0	0.00	0.00	1,700.0	0.0	0.0	0.0	0.00	0.00	0.00
1,800.0	0.00	0.00	1,800.0	0.0	0.0	0.0	0.00	0.00	0.00
1,900.0	0.00	0.00	1,900.0	0.0	0.0	0.0	0.00	0.00	0.00
2,000.0	0.00	0.00	2,000.0	0.0	0.0	0.0	0.00	0.00	0.00
KOP #1									
2,100.0	2.00	314.69	2,100.0	1.2	-1.2	1.3	2.00	2.00	0.00
2,200.0	4.00	314.69	2,199.8	4.9	-5.0	5.1	2.00	2.00	0.00
2,297.2	5.94	314.69	2,296.6	10.8	-10.9	11.3	2.00	2.00	0.00
2,300.0	5.94	314.69	2,299.5	11.0	-11.2	11.5	0.00	0.00	0.00
2,400.0	5.94	314.69	2,398.9	18.3	-18.5	19.2	0.00	0.00	0.00
2,500.0	5.94	314.69	2,498.4	25.6	-25.9	26.8	0.00	0.00	0.00
2,600.0	5.94	314.69	2,597.8	32.9	-33.2	34.4	0.00	0.00	0.00
2,700.0	5.94	314.69	2,697.3	40.2	-40.6	42.0	0.00	0.00	0.00
2,800.0	5.94	314.69	2,796.8	47.4	-48.0	49.6	0.00	0.00	0.00
2,900.0	5.94	314.69	2,896.2	54.7	-55.3	57.2	0.00	0.00	0.00
3,000.0	5.94	314.69	2,995.7	62.0	-62.7	64.8	0.00	0.00	0.00
3,100.0	5.94	314.69	3,095.2	69.3	-70.0	72.5	0.00	0.00	0.00
3,200.0	5.94	314.69	3,194.6	76.6	-77.4	80.1	0.00	0.00	0.00
3,300.0	5.94	314.69	3,294.1	83.9	-84.8	87.7	0.00	0.00	0.00
3,400.0	5.94	314.69	3,393.5	91.1	-92.1	95.3	0.00	0.00	0.00
3,500.0	5.94	314.69	3,493.0	98.4	-99.5	102.9	0.00	0.00	0.00
3,600.0	5.94	314.69	3,592.5	105.7	-106.8	110.5	0.00	0.00	0.00
3,700.0	5.94	314.69	3,691.9	113.0	-114.2	118.2	0.00	0.00	0.00
3,800.0	5.94	314.69	3,791.4	120.3	-121.6	125.8	0.00	0.00	0.00
3,900.0	5.94	314.69	3,890.9	127.5	-128.9	133.4	0.00	0.00	0.00
4,000.0	5.94	314.69	3,990.3	134.8	-136.3	141.0	0.00	0.00	0.00
4,100.0	5.94	314.69	4,089.8	142.1	-143.6	148.6	0.00	0.00	0.00
4,200.0	5.94	314.69	4,189.2	149.4	-151.0	156.2	0.00	0.00	0.00
4,300.0	5.94	314.69	4,288.7	156.7	-158.4	163.8	0.00	0.00	0.00
4,400.0	5.94	314.69	4,388.2	164.0	-165.7	171.5	0.00	0.00	0.00
4,500.0	5.94	314.69	4,487.6	171.2	-173.1	179.1	0.00	0.00	0.00
4,600.0	5.94	314.69	4,587.1	178.5	-180.4	186.7	0.00	0.00	0.00

Database:	Landmark	Local Co-ordinate Reference:	Well Wickstrom 18-3H
Company:	Condor Energy	TVD Reference:	WELL @ 4712.8ft (RKB - 12.5')
Project:	SEC.18-T6N-R60W	MD Reference:	WELL @ 4712.8ft (RKB - 12.5')
Site:	Wickstrom 18-2H Pad Sec.18-T6N-R60W	North Reference:	True
Well:	Wickstrom 18-3H	Survey Calculation Method:	Minimum Curvature
Wellbore:	Wellbore #1		
Design:	Plan #1 (7-24-13)		

Planned Survey									
Measured Depth (ft)	Inclination (°)	Azimuth (°)	Vertical Depth (ft)	+N/-S (ft)	+E/-W (ft)	Vertical Section (ft)	Dogleg Rate (°/100ft)	Build Rate (°/100ft)	Turn Rate (°/100ft)
4,700.0	5.94	314.69	4,686.6	185.8	-187.8	194.3	0.00	0.00	0.00
4,716.9	5.94	314.69	4,703.4	187.0	-189.1	195.6	0.00	0.00	0.00
4,800.0	4.28	314.69	4,786.1	192.2	-194.3	201.0	2.00	-2.00	0.00
4,900.0	2.28	314.69	4,886.0	196.3	-198.4	205.2	2.00	-2.00	0.00
5,000.0	0.28	314.69	4,985.9	197.8	-200.0	206.9	2.00	-2.00	0.00
5,014.1	0.00	0.00	5,000.0	197.9	-200.0	206.9	2.00	-2.00	0.00
5,100.0	0.00	0.00	5,085.9	197.9	-200.0	206.9	0.00	0.00	0.00
5,200.0	0.00	0.00	5,185.9	197.9	-200.0	206.9	0.00	0.00	0.00
5,300.0	0.00	0.00	5,285.9	197.9	-200.0	206.9	0.00	0.00	0.00
5,397.9	0.00	0.00	5,383.8	197.9	-200.0	206.9	0.00	0.00	0.00
KOP #2									
5,400.0	0.17	358.42	5,385.9	197.9	-200.0	206.9	8.11	8.11	0.00
5,500.0	8.17	358.42	5,485.6	205.1	-200.2	214.2	8.00	8.00	0.00
5,600.0	16.17	358.42	5,583.3	226.2	-200.8	235.2	8.00	8.00	0.00
5,700.0	24.17	358.42	5,677.0	260.6	-201.7	269.7	8.00	8.00	0.00
5,800.0	32.17	358.42	5,765.1	307.8	-203.0	316.9	8.00	8.00	0.00
5,900.0	40.17	358.42	5,845.8	366.7	-204.6	375.8	8.00	8.00	0.00
6,000.0	48.17	358.42	5,917.5	436.3	-206.6	445.4	8.00	8.00	0.00
6,100.0	56.17	358.42	5,978.7	515.2	-208.7	524.3	8.00	8.00	0.00
6,200.0	64.17	358.42	6,028.4	601.9	-211.1	611.0	8.00	8.00	0.00
6,300.0	72.17	358.42	6,065.6	694.6	-213.7	703.7	8.00	8.00	0.00
6,400.0	80.17	358.42	6,089.5	791.6	-216.3	800.7	8.00	8.00	0.00
6,500.0	88.17	358.42	6,099.6	890.9	-219.1	900.1	8.00	8.00	0.00
6,522.9	90.00	358.42	6,100.0	913.8	-219.7	923.0	8.00	8.00	0.00
6,523.5	90.00	358.42	6,100.0	914.4	-219.7	923.6	0.00	0.00	0.00
End of Build - 7" - Landing Pt. 660'FSL & 1392'FWL, Sec.7									
6,524.9	90.00	358.45	6,100.0	915.8	-219.8	925.0	2.00	0.00	2.00
6,600.0	90.00	358.45	6,100.0	990.9	-221.8	1,000.1	0.00	0.00	0.00
6,700.0	90.00	358.45	6,100.0	1,090.9	-224.5	1,100.1	0.00	0.00	0.00
6,800.0	90.00	358.45	6,100.0	1,190.8	-227.2	1,200.1	0.00	0.00	0.00
6,900.0	90.00	358.45	6,100.0	1,290.8	-229.9	1,300.0	0.00	0.00	0.00
7,000.0	90.00	358.45	6,100.0	1,390.7	-232.6	1,400.0	0.00	0.00	0.00
7,100.0	90.00	358.45	6,100.0	1,490.7	-235.3	1,500.0	0.00	0.00	0.00
7,200.0	90.00	358.45	6,100.0	1,590.7	-238.0	1,600.0	0.00	0.00	0.00
7,300.0	90.00	358.45	6,100.0	1,690.6	-240.7	1,700.0	0.00	0.00	0.00
7,400.0	90.00	358.45	6,100.0	1,790.6	-243.4	1,800.0	0.00	0.00	0.00
7,500.0	90.00	358.45	6,100.0	1,890.6	-246.1	1,899.9	0.00	0.00	0.00
7,600.0	90.00	358.45	6,100.0	1,990.5	-248.8	1,999.9	0.00	0.00	0.00
7,700.0	90.00	358.45	6,100.0	2,090.5	-251.5	2,099.9	0.00	0.00	0.00
7,800.0	90.00	358.45	6,100.0	2,190.5	-254.2	2,199.9	0.00	0.00	0.00
7,900.0	90.00	358.45	6,100.0	2,290.4	-256.9	2,299.9	0.00	0.00	0.00
8,000.0	90.00	358.45	6,100.0	2,390.4	-259.6	2,399.8	0.00	0.00	0.00
8,100.0	90.00	358.45	6,100.0	2,490.3	-262.3	2,499.8	0.00	0.00	0.00
8,200.0	90.00	358.45	6,100.0	2,590.3	-265.0	2,599.8	0.00	0.00	0.00
8,300.0	90.00	358.45	6,100.0	2,690.3	-267.7	2,699.8	0.00	0.00	0.00
8,400.0	90.00	358.45	6,100.0	2,790.2	-270.4	2,799.8	0.00	0.00	0.00
8,500.0	90.00	358.45	6,100.0	2,890.2	-273.1	2,899.7	0.00	0.00	0.00
8,600.0	90.00	358.45	6,100.0	2,990.2	-275.8	2,999.7	0.00	0.00	0.00
8,700.0	90.00	358.45	6,100.0	3,090.1	-278.5	3,099.7	0.00	0.00	0.00
8,800.0	90.00	358.45	6,100.0	3,190.1	-281.2	3,199.7	0.00	0.00	0.00
8,900.0	90.00	358.45	6,100.0	3,290.0	-283.9	3,299.7	0.00	0.00	0.00
9,000.0	90.00	358.45	6,100.0	3,390.0	-286.6	3,399.7	0.00	0.00	0.00
9,100.0	90.00	358.45	6,100.0	3,490.0	-289.3	3,499.6	0.00	0.00	0.00

Database:	Landmark	Local Co-ordinate Reference:	Well Wickstrom 18-3H
Company:	Condor Energy	TVD Reference:	WELL @ 4712.8ft (RKB - 12.5')
Project:	SEC.18-T6N-R60W	MD Reference:	WELL @ 4712.8ft (RKB - 12.5')
Site:	Wickstrom 18-2H Pad Sec.18-T6N-R60W	North Reference:	True
Well:	Wickstrom 18-3H	Survey Calculation Method:	Minimum Curvature
Wellbore:	Wellbore #1		
Design:	Plan #1 (7-24-13)		

Planned Survey									
Measured Depth (ft)	Inclination (°)	Azimuth (°)	Vertical Depth (ft)	+N/-S (ft)	+E/-W (ft)	Vertical Section (ft)	Dogleg Rate (°/100ft)	Build Rate (°/100ft)	Turn Rate (°/100ft)
9,200.0	90.00	358.45	6,100.0	3,589.9	-292.0	3,599.6	0.00	0.00	0.00
9,300.0	90.00	358.45	6,100.0	3,689.9	-294.7	3,699.6	0.00	0.00	0.00
9,400.0	90.00	358.45	6,100.0	3,789.9	-297.4	3,799.6	0.00	0.00	0.00
9,500.0	90.00	358.45	6,100.0	3,889.8	-300.1	3,899.6	0.00	0.00	0.00
9,600.0	90.00	358.45	6,100.0	3,989.8	-302.8	3,999.5	0.00	0.00	0.00
9,700.0	90.00	358.45	6,100.0	4,089.8	-305.5	4,099.5	0.00	0.00	0.00
9,800.0	90.00	358.45	6,100.0	4,189.7	-308.2	4,199.5	0.00	0.00	0.00
9,900.0	90.00	358.45	6,100.0	4,289.7	-310.9	4,299.5	0.00	0.00	0.00
10,000.0	90.00	358.45	6,100.0	4,389.6	-313.6	4,399.5	0.00	0.00	0.00
10,100.0	90.00	358.45	6,100.0	4,489.6	-316.3	4,499.4	0.00	0.00	0.00
10,200.0	90.00	358.45	6,100.0	4,589.6	-319.0	4,599.4	0.00	0.00	0.00
10,300.0	90.00	358.45	6,100.0	4,689.5	-321.7	4,699.4	0.00	0.00	0.00
10,400.0	90.00	358.45	6,100.0	4,789.5	-324.5	4,799.4	0.00	0.00	0.00
10,500.0	90.00	358.45	6,100.0	4,889.5	-327.2	4,899.4	0.00	0.00	0.00
10,600.0	90.00	358.45	6,100.0	4,989.4	-329.9	4,999.4	0.00	0.00	0.00
10,700.0	90.00	358.45	6,100.0	5,089.4	-332.6	5,099.3	0.00	0.00	0.00
10,800.0	90.00	358.45	6,100.0	5,189.4	-335.3	5,199.3	0.00	0.00	0.00
10,900.0	90.00	358.45	6,100.0	5,289.3	-338.0	5,299.3	0.00	0.00	0.00
11,000.0	90.00	358.45	6,100.0	5,389.3	-340.7	5,399.3	0.00	0.00	0.00
11,100.0	90.00	358.45	6,100.0	5,489.2	-343.4	5,499.3	0.00	0.00	0.00
11,200.0	90.00	358.45	6,100.0	5,589.2	-346.1	5,599.2	0.00	0.00	0.00
11,300.0	90.00	358.45	6,100.0	5,689.2	-348.8	5,699.2	0.00	0.00	0.00
11,400.0	90.00	358.45	6,100.0	5,789.1	-351.5	5,799.2	0.00	0.00	0.00
11,500.0	90.00	358.45	6,100.0	5,889.1	-354.2	5,899.2	0.00	0.00	0.00
11,600.0	90.00	358.45	6,100.0	5,989.1	-356.9	5,999.2	0.00	0.00	0.00
11,700.0	90.00	358.45	6,100.0	6,089.0	-359.6	6,099.1	0.00	0.00	0.00
11,800.0	90.00	358.45	6,100.0	6,189.0	-362.3	6,199.1	0.00	0.00	0.00
11,900.0	90.00	358.45	6,100.0	6,289.0	-365.0	6,299.1	0.00	0.00	0.00
12,000.0	90.00	358.45	6,100.0	6,388.9	-367.7	6,399.1	0.00	0.00	0.00
12,100.0	90.00	358.45	6,100.0	6,488.9	-370.4	6,499.1	0.00	0.00	0.00
12,200.0	90.00	358.45	6,100.0	6,588.8	-373.1	6,599.1	0.00	0.00	0.00
12,300.0	90.00	358.45	6,100.0	6,688.8	-375.8	6,699.0	0.00	0.00	0.00
12,400.0	90.00	358.45	6,100.0	6,788.8	-378.5	6,799.0	0.00	0.00	0.00
12,500.0	90.00	358.45	6,100.0	6,888.7	-381.2	6,899.0	0.00	0.00	0.00
12,600.0	90.00	358.45	6,100.0	6,988.7	-383.9	6,999.0	0.00	0.00	0.00
12,700.0	90.00	358.45	6,100.0	7,088.7	-386.6	7,099.0	0.00	0.00	0.00
12,800.0	90.00	358.45	6,100.0	7,188.6	-389.3	7,198.9	0.00	0.00	0.00
12,900.0	90.00	358.45	6,100.0	7,288.6	-392.0	7,298.9	0.00	0.00	0.00
13,000.0	90.00	358.45	6,100.0	7,388.6	-394.7	7,398.9	0.00	0.00	0.00
13,100.0	90.00	358.45	6,100.0	7,488.5	-397.4	7,498.9	0.00	0.00	0.00
13,200.0	90.00	358.45	6,100.0	7,588.5	-400.1	7,598.9	0.00	0.00	0.00
13,300.0	90.00	358.45	6,100.0	7,688.4	-402.8	7,698.8	0.00	0.00	0.00
13,400.0	90.00	358.45	6,100.0	7,788.4	-405.5	7,798.8	0.00	0.00	0.00
13,500.0	90.00	358.45	6,100.0	7,888.4	-408.2	7,898.8	0.00	0.00	0.00
13,600.0	90.00	358.45	6,100.0	7,988.3	-410.9	7,998.8	0.00	0.00	0.00
13,700.0	90.00	358.45	6,100.0	8,088.3	-413.6	8,098.8	0.00	0.00	0.00
13,800.0	90.00	358.45	6,100.0	8,188.3	-416.3	8,198.8	0.00	0.00	0.00
13,900.0	90.00	358.45	6,100.0	8,288.2	-419.0	8,298.7	0.00	0.00	0.00
14,000.0	90.00	358.45	6,100.0	8,388.2	-421.7	8,398.7	0.00	0.00	0.00
14,100.0	90.00	358.45	6,100.0	8,488.2	-424.4	8,498.7	0.00	0.00	0.00
14,200.0	90.00	358.45	6,100.0	8,588.1	-427.1	8,598.7	0.00	0.00	0.00
14,300.0	90.00	358.45	6,100.0	8,688.1	-429.8	8,698.7	0.00	0.00	0.00
14,400.0	90.00	358.45	6,100.0	8,788.0	-432.5	8,798.6	0.00	0.00	0.00
14,500.0	90.00	358.45	6,100.0	8,888.0	-435.2	8,898.6	0.00	0.00	0.00

Database:	Landmark	Local Co-ordinate Reference:	Well Wickstrom 18-3H
Company:	Condor Energy	TVD Reference:	WELL @ 4712.8ft (RKB - 12.5')
Project:	SEC.18-T6N-R60W	MD Reference:	WELL @ 4712.8ft (RKB - 12.5')
Site:	Wickstrom 18-2H Pad Sec.18-T6N-R60W	North Reference:	True
Well:	Wickstrom 18-3H	Survey Calculation Method:	Minimum Curvature
Wellbore:	Wellbore #1		
Design:	Plan #1 (7-24-13)		

Planned Survey										
Measured Depth (ft)	Inclination (°)	Azimuth (°)	Vertical Depth (ft)	+N/-S (ft)	+E/-W (ft)	Vertical Section (ft)	Dogleg Rate (°/100ft)	Build Rate (°/100ft)	Turn Rate (°/100ft)	
14,600.0	90.00	358.45	6,100.0	8,988.0	-437.9	8,998.6	0.00	0.00	0.00	
14,700.0	90.00	358.45	6,100.0	9,087.9	-440.6	9,098.6	0.00	0.00	0.00	
14,800.0	90.00	358.45	6,100.0	9,187.9	-443.3	9,198.6	0.00	0.00	0.00	
14,900.0	90.00	358.45	6,100.0	9,287.9	-446.0	9,298.5	0.00	0.00	0.00	
15,000.0	90.00	358.45	6,100.0	9,387.8	-448.7	9,398.5	0.00	0.00	0.00	
15,100.0	90.00	358.45	6,100.0	9,487.8	-451.4	9,498.5	0.00	0.00	0.00	
15,200.0	90.00	358.45	6,100.0	9,587.7	-454.1	9,598.5	0.00	0.00	0.00	
15,300.0	90.00	358.45	6,100.0	9,687.7	-456.8	9,698.5	0.00	0.00	0.00	
15,400.0	90.00	358.45	6,100.0	9,787.7	-459.5	9,798.5	0.00	0.00	0.00	
15,500.0	90.00	358.45	6,100.0	9,887.6	-462.2	9,898.4	0.00	0.00	0.00	
15,600.0	90.00	358.45	6,100.0	9,987.6	-464.9	9,998.4	0.00	0.00	0.00	
15,678.6	90.00	358.45	6,100.0	10,066.2	-467.1	10,077.0	0.00	0.00	0.00	
BHL 660'FNL & 1263'FWL, Sec. 6 - HARDLINE 600' BHL										

Casing Points					
Measured Depth (ft)	Vertical Depth (ft)	Name	Casing Diameter (")	Hole Diameter (")	
6,523.5	6,100.0	7"	7	7-1/2	

Plan Annotations					
Measured Depth (ft)	Vertical Depth (ft)	Local Coordinates			
		+N/-S (ft)	+E/-W (ft)	Comment	
2,000.0	2,000.0	0.0	0.0	KOP #1	
5,397.9	5,383.8	197.9	-200.0	KOP #2	
6,523.5	6,100.0	914.4	-219.7	End of Build	