



## **Bayswater**

**Windsor**

**Windsor LV 14H**

**Windsor LV E-14H**

**Windsor LV E-14H**

**Plan: Windsor LV E-14H**

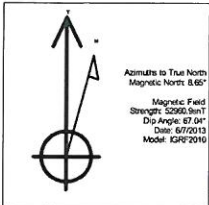
## **Standard Planning Report**

**09 July, 2013**

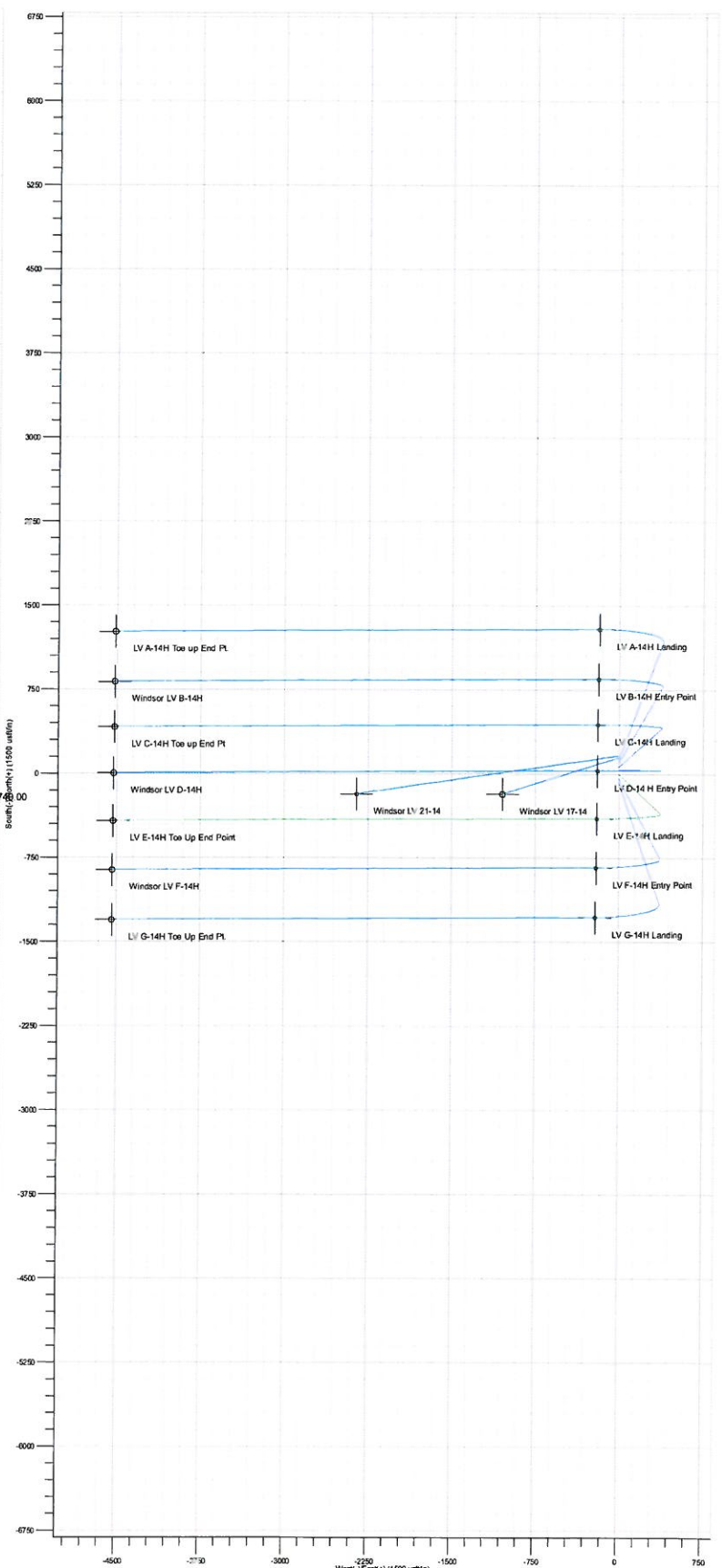
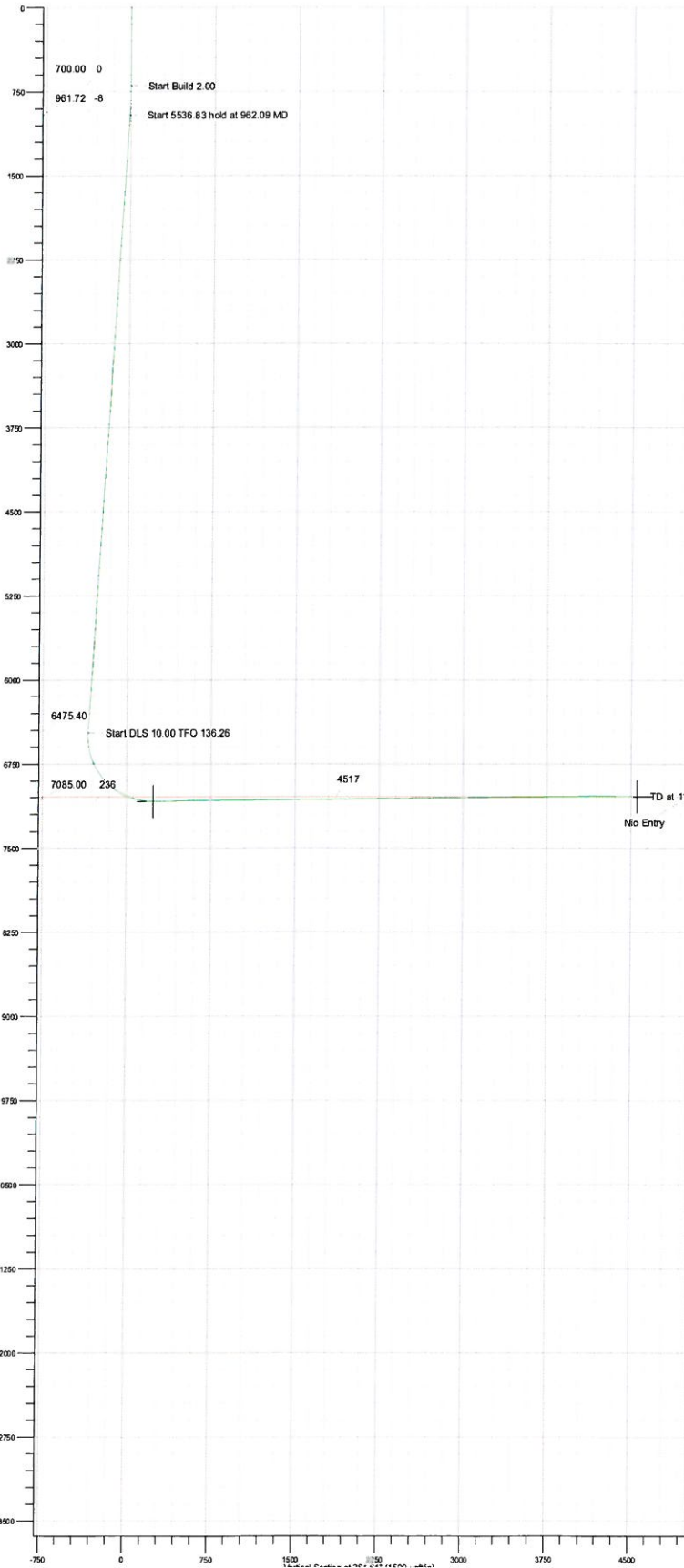
WELL DETAILS: Windsor LV E-14H												
+N/S		+E/W		Northing		Ground Level		Easting		Longitude		Shot
0.00		0.00		196833.19		4846.00		3180210.252		-104.852550		
SECTION DETAILS												
Sec	MD	Inc	Asa	TVD	+N/S	+E/W	Dir	FF	V-Set	Target	Annotation	
1	0.00	0.00	0.00	0.00	0.00	0.00	0.00	0.00	0.00	0.00	Start Build 2.00	
2	0.00	0.00	0.00	700.00	0.00	0.00	0.00	0.00	0.00	0.00	Start 5536 83 hold at 962.09 MD	
3	0.00	0.00	0.00	133.25	961.72	-8.21	0.73	0.00	133.25	-17.92	Start DLS 10.00 TFO 136.26	
4	0.00	0.00	0.00	133.25	961.72	-8.21	0.73	0.00	133.25	-17.92	Start DLS 10.00 TFO 136.26	
5	7642.81	90.60	103.81	7085.00	-297.09	-209.27	10.00	131.18	250.48	LV E-14H Landing	TD at 11742.00	
6	11742.00	0.00	0.00	7085.00	-297.09	-209.27	10.00	131.18	250.48	LV E-14H Landing	TD at 11742.00	

DESIGN TARGET DETAILS											
Name		TVD	+N/S	+E/W	Northing	Easting	Latitude	Longitude	Shape		
LV E-14H Top Up End Point 040.00		-422.19	-4531.11	196180.37	317560.15	4240.040	-104.86640	-104.86640	Circle (Radius: 25.00')		
perimeter target		-377.09	-1396.16	196314.20	316911.770	4219.742	-104.445711 E	-104.445711 E	Cross (Radius: 15.00')		
LV E-14H Landing		-209.27	-2904.18	196314.20	316911.770	4248.510	-104.85270	-104.85270	Cross (Radius: 15.00')		
-plus his target center											

FORMATION TOP DETAILS				
TVDPth	MDPth	Formation	DipAngle	DpDir
7045.00	7221.18	No Entry	0.00	



PROJECT DETAILS: Windsor	
Geodetic System:	US State Plane 1983
Datum:	North American Datum 1983
Ellipsoid:	GRS 1980
Zone:	Colorado Central Zone
System Datum:	Mean Sea Level



<b>Database:</b>	Compass DB	<b>Local Co-ordinate Reference:</b>	Well Windsor LV E-14H
<b>Company:</b>	Bayswater	<b>TVD Reference:</b>	WELL @ 4846.00usft (Original Well Elev)
<b>Project:</b>	Windsor	<b>MD Reference:</b>	WELL @ 4846.00usft (Original Well Elev)
<b>Site:</b>	Windsor LV 14H	<b>North Reference:</b>	True
<b>Well:</b>	Windsor LV E-14H	<b>Survey Calculation Method:</b>	Minimum Curvature
<b>Wellbore:</b>	Windsor LV E-14H		
<b>Design:</b>	Windsor LV E-14H		

<b>Project</b>	Windsor, Colorado		
<b>Map System:</b>	US State Plane 1983	<b>System Datum:</b>	Mean Sea Level
<b>Geo Datum:</b>	North American Datum 1983		
<b>Map Zone:</b>	Colorado Central Zone		Using geodetic scale factor

Site		Windsor LV 14H			
Site Position:		Northing:	1,968,660.741 usft	Latitude:	40.490950
From:	Lat/Long	Easting:	3,180,209.343 usft	Longitude:	-104.852250
Position Uncertainty:	0.00 usft	Slot Radius:	13-3/16 "	Grid Convergence:	0.41 °

Well	Windsor LV E-14H					
Well Position	+N/-S	-127.52 usft	Northing:	1,968,533.191 usft	Latitude:	40.490600
	+E/-W	0.00 usft	Easting:	3,180,210.252 usft	Longitude:	-104.852250
Position Uncertainty		0.00 usft	Wellhead Elevation:	4,846.00 usft	Ground Level:	4,846.00 usft

<b>Wellbore</b>	Windsor LV E-14H				
<b>Magnetics</b>	<b>Model Name</b>	<b>Sample Date</b>	<b>Declination (°)</b>	<b>Dip Angle (°)</b>	<b>Field Strength (nT)</b>
	IGRF2010	6/7/2013	8.65	67.04	52,961

Design	Windsor LV E-14H				
Audit Notes:					
Version:	1	Phase:	PROTOTYPE	Tie On Depth:	0.00
Vertical Section:	Depth From (TVD) (usft)	+N/-S (usft)	+E/-W (usft)	Direction (°)	
	0.00	0.00	0.00	264.64	

<b>Plan Sections</b>										
Measured Depth (usft)	Inclination (°)	Azimuth (°)	Vertical Depth (usft)	+N/-S (usft)	+E/-W (usft)	Dogleg Rate (°/100usft)	Build Rate (°/100usft)	Turn Rate (°/100usft)	TFO (°)	Target
0.00	0.00	0.00	0.00	0.00	0.00	0.00	0.00	0.00	0.00	
700.00	0.00	0.00	700.00	0.00	0.00	0.00	0.00	0.00	0.00	
962.09	5.24	133.25	961.72	-8.21	8.73	2.00	2.00	0.00	133.25	
6,498.92	5.24	133.25	6,475.40	-354.78	377.18	0.00	0.00	0.00	0.00	
7,442.85	90.60	269.67	7,085.00	-397.09	-200.27	10.00	9.04	14.45	136.26	LV E-14H Landing
11,740.00	90.60	269.67	7,040.00	-421.92	-4,497.11	0.00	0.00	0.00	88.20	



<b>Database:</b>	Compass DB	<b>Local Co-ordinate Reference:</b>	Well Windsor LV E-14H
<b>Company:</b>	Bayswater	<b>TVD Reference:</b>	WELL @ 4846.00usft (Original Well Elev)
<b>Project:</b>	Windsor	<b>MD Reference:</b>	WELL @ 4846.00usft (Original Well Elev)
<b>Site:</b>	Windsor LV 14H	<b>North Reference:</b>	True
<b>Well:</b>	Windsor LV E-14H	<b>Survey Calculation Method:</b>	Minimum Curvature
<b>Wellbore:</b>	Windsor LV E-14H		
<b>Design:</b>	Windsor LV E-14H		

**Planned Survey**

Measured Depth (usft)	Inclination (°)	Azimuth (°)	Vertical Depth (usft)	+N/-S (usft)	+E/-W (usft)	Vertical Section (usft)	Dogleg Rate (°/100usft)	Build Rate (°/100usft)	Turn Rate (°/100usft)
0.00	0.00	0.00	0.00	0.00	0.00	0.00	0.00	0.00	0.00
100.00	0.00	0.00	100.00	0.00	0.00	0.00	0.00	0.00	0.00
200.00	0.00	0.00	200.00	0.00	0.00	0.00	0.00	0.00	0.00
300.00	0.00	0.00	300.00	0.00	0.00	0.00	0.00	0.00	0.00
400.00	0.00	0.00	400.00	0.00	0.00	0.00	0.00	0.00	0.00
500.00	0.00	0.00	500.00	0.00	0.00	0.00	0.00	0.00	0.00
600.00	0.00	0.00	600.00	0.00	0.00	0.00	0.00	0.00	0.00
700.00	0.00	0.00	700.00	0.00	0.00	0.00	0.00	0.00	0.00
<b>Start Build 2.00</b>									
800.00	2.00	133.25	799.98	-1.20	1.27	-1.15	2.00	2.00	0.00
900.00	4.00	133.25	899.84	-4.78	5.08	-4.61	2.00	2.00	0.00
962.09	5.24	133.25	961.72	-8.21	8.73	-7.92	2.00	2.00	0.00
<b>Start 5536.83 hold at 962.09 MD</b>									
1,000.00	5.24	133.25	999.48	-10.58	11.25	-10.21	0.00	0.00	0.00
1,100.00	5.24	133.25	1,099.06	-16.84	17.90	-16.25	0.00	0.00	0.00
1,200.00	5.24	133.25	1,198.64	-23.10	24.56	-22.29	0.00	0.00	0.00
1,300.00	5.24	133.25	1,298.22	-29.36	31.21	-28.34	0.00	0.00	0.00
1,400.00	5.24	133.25	1,397.80	-35.62	37.87	-34.38	0.00	0.00	0.00
1,500.00	5.24	133.25	1,497.39	-41.88	44.52	-40.42	0.00	0.00	0.00
1,600.00	5.24	133.25	1,596.97	-48.14	51.18	-46.46	0.00	0.00	0.00
1,700.00	5.24	133.25	1,696.55	-54.40	57.83	-52.50	0.00	0.00	0.00
1,800.00	5.24	133.25	1,796.13	-60.66	64.49	-58.54	0.00	0.00	0.00
1,900.00	5.24	133.25	1,895.71	-66.92	71.14	-64.58	0.00	0.00	0.00
2,000.00	5.24	133.25	1,995.29	-73.18	77.80	-70.62	0.00	0.00	0.00
2,100.00	5.24	133.25	2,094.88	-79.44	84.45	-76.66	0.00	0.00	0.00
2,200.00	5.24	133.25	2,194.46	-85.69	91.11	-82.70	0.00	0.00	0.00
2,300.00	5.24	133.25	2,294.04	-91.95	97.76	-88.75	0.00	0.00	0.00
2,400.00	5.24	133.25	2,393.62	-98.21	104.41	-94.79	0.00	0.00	0.00
2,500.00	5.24	133.25	2,493.20	-104.47	111.07	-100.83	0.00	0.00	0.00
2,600.00	5.24	133.25	2,592.78	-110.73	117.72	-106.87	0.00	0.00	0.00
2,700.00	5.24	133.25	2,692.37	-116.99	124.38	-112.91	0.00	0.00	0.00
2,800.00	5.24	133.25	2,791.95	-123.25	131.03	-118.95	0.00	0.00	0.00
2,900.00	5.24	133.25	2,891.53	-129.51	137.69	-124.99	0.00	0.00	0.00
3,000.00	5.24	133.25	2,991.11	-135.77	144.34	-131.03	0.00	0.00	0.00
3,100.00	5.24	133.25	3,090.69	-142.03	151.00	-137.07	0.00	0.00	0.00
3,200.00	5.24	133.25	3,190.28	-148.29	157.65	-143.11	0.00	0.00	0.00
3,300.00	5.24	133.25	3,289.86	-154.55	164.31	-149.16	0.00	0.00	0.00
3,400.00	5.24	133.25	3,389.44	-160.81	170.96	-155.20	0.00	0.00	0.00
3,500.00	5.24	133.25	3,489.02	-167.07	177.62	-161.24	0.00	0.00	0.00
3,600.00	5.24	133.25	3,588.60	-173.33	184.27	-167.28	0.00	0.00	0.00
3,700.00	5.24	133.25	3,688.18	-179.59	190.93	-173.32	0.00	0.00	0.00
3,800.00	5.24	133.25	3,787.77	-185.85	197.58	-179.36	0.00	0.00	0.00
3,900.00	5.24	133.25	3,887.35	-192.10	204.23	-185.40	0.00	0.00	0.00
4,000.00	5.24	133.25	3,986.93	-198.36	210.89	-191.44	0.00	0.00	0.00
4,100.00	5.24	133.25	4,086.51	-204.62	217.54	-197.48	0.00	0.00	0.00
4,200.00	5.24	133.25	4,186.09	-210.88	224.20	-203.52	0.00	0.00	0.00
4,300.00	5.24	133.25	4,285.68	-217.14	230.85	-209.57	0.00	0.00	0.00
4,400.00	5.24	133.25	4,385.26	-223.40	237.51	-215.61	0.00	0.00	0.00
4,500.00	5.24	133.25	4,484.84	-229.66	244.16	-221.65	0.00	0.00	0.00
4,600.00	5.24	133.25	4,584.42	-235.92	250.82	-227.69	0.00	0.00	0.00
4,700.00	5.24	133.25	4,684.00	-242.18	257.47	-233.73	0.00	0.00	0.00
4,800.00	5.24	133.25	4,783.58	-248.44	264.13	-239.77	0.00	0.00	0.00
4,900.00	5.24	133.25	4,883.17	-254.70	270.78	-245.81	0.00	0.00	0.00
5,000.00	5.24	133.25	4,982.75	-260.96	277.44	-251.85	0.00	0.00	0.00

<b>Database:</b>	Compass DB	<b>Local Co-ordinate Reference:</b>	Well Windsor LV E-14H
<b>Company:</b>	Bayswater	<b>TVD Reference:</b>	WELL @ 4846.00usft (Original Well Elev)
<b>Project:</b>	Windsor	<b>MD Reference:</b>	WELL @ 4846.00usft (Original Well Elev)
<b>Site:</b>	Windsor LV 14H	<b>North Reference:</b>	True
<b>Well:</b>	Windsor LV E-14H	<b>Survey Calculation Method:</b>	Minimum Curvature
<b>Wellbore:</b>	Windsor LV E-14H		
<b>Design:</b>	Windsor LV E-14H		

**Planned Survey**

Measured Depth (usft)	Inclination (°)	Azimuth (°)	Vertical Depth (usft)	+N/-S (usft)	+E/-W (usft)	Vertical Section (usft)	Dogleg Rate (°/100usft)	Build Rate (°/100usft)	Turn Rate (°/100usft)
5,100.00	5.24	133.25	5,082.33	-267.22	284.09	-257.89	0.00	0.00	0.00
5,200.00	5.24	133.25	5,181.91	-273.48	290.75	-263.93	0.00	0.00	0.00
5,300.00	5.24	133.25	5,281.49	-279.74	297.40	-269.98	0.00	0.00	0.00
5,400.00	5.24	133.25	5,381.08	-286.00	304.05	-276.02	0.00	0.00	0.00
5,500.00	5.24	133.25	5,480.66	-292.26	310.71	-282.06	0.00	0.00	0.00
5,600.00	5.24	133.25	5,580.24	-298.52	317.36	-288.10	0.00	0.00	0.00
5,700.00	5.24	133.25	5,679.82	-304.77	324.02	-294.14	0.00	0.00	0.00
5,800.00	5.24	133.25	5,779.40	-311.03	330.67	-300.18	0.00	0.00	0.00
5,900.00	5.24	133.25	5,878.98	-317.29	337.33	-306.22	0.00	0.00	0.00
6,000.00	5.24	133.25	5,978.57	-323.55	343.98	-312.26	0.00	0.00	0.00
6,100.00	5.24	133.25	6,078.15	-329.81	350.64	-318.30	0.00	0.00	0.00
6,200.00	5.24	133.25	6,177.73	-336.07	357.29	-324.34	0.00	0.00	0.00
6,300.00	5.24	133.25	6,277.31	-342.33	363.95	-330.39	0.00	0.00	0.00
6,400.00	5.24	133.25	6,376.89	-348.59	370.60	-336.43	0.00	0.00	0.00
6,498.92	5.24	133.25	6,475.40	-354.78	377.18	-342.40	0.00	0.00	0.00
<b>Start DLS 10.00 TFO 136.26</b>									
6,500.00	5.16	134.08	6,476.48	-354.85	377.25	-342.47	10.00	-7.18	76.81
6,600.00	7.28	239.92	6,576.12	-361.17	375.00	-339.63	10.00	2.11	105.84
6,700.00	16.70	257.45	6,673.86	-367.48	355.45	-319.57	10.00	9.43	17.54
6,800.00	26.55	262.35	6,766.71	-373.59	319.18	-282.89	10.00	9.84	4.90
6,900.00	36.47	264.72	6,851.87	-379.32	267.31	-230.71	10.00	9.92	2.37
7,000.00	46.43	266.18	6,926.73	-384.48	201.40	-164.61	10.00	9.95	1.46
7,100.00	56.39	267.22	6,989.03	-388.93	123.47	-86.60	10.00	9.97	1.04
7,200.00	66.37	268.04	7,036.87	-392.52	35.87	0.94	10.00	9.97	0.82
7,221.18	68.48	268.20	7,045.00	-393.16	16.33	20.46	10.00	9.98	0.74
<b>Nio Entry</b>									
7,300.00	76.34	268.75	7,068.80	-395.15	-58.72	95.37	10.00	9.98	0.70
7,400.00	86.32	269.40	7,083.85	-396.74	-157.44	193.81	10.00	9.98	0.65
7,442.85	90.60	269.67	7,085.00	-397.09	-200.27	236.48	10.00	9.98	0.63
<b>Start DLS 0.00 TFO 88.20 - LV E-14H Landing</b>									
7,500.00	90.60	269.67	7,084.40	-397.42	-257.41	293.40	0.00	0.00	0.00
7,600.00	90.60	269.67	7,083.35	-398.00	-357.41	393.01	0.00	0.00	0.00
7,700.00	90.60	269.67	7,082.31	-398.58	-457.40	492.62	0.00	0.00	0.00
7,800.00	90.60	269.67	7,081.26	-399.16	-557.39	592.23	0.00	0.00	0.00
7,900.00	90.60	269.67	7,080.21	-399.74	-657.38	691.84	0.00	0.00	0.00
8,000.00	90.60	269.67	7,079.17	-400.32	-757.38	791.45	0.00	0.00	0.00
8,100.00	90.60	269.67	7,078.12	-400.90	-857.37	891.06	0.00	0.00	0.00
8,200.00	90.60	269.67	7,077.07	-401.48	-957.36	990.67	0.00	0.00	0.00
8,300.00	90.60	269.67	7,076.03	-402.06	-1,057.36	1,090.28	0.00	0.00	0.00
8,400.00	90.60	269.67	7,074.98	-402.63	-1,157.35	1,189.89	0.00	0.00	0.00
8,500.00	90.60	269.67	7,073.93	-403.21	-1,257.34	1,289.50	0.00	0.00	0.00
8,600.00	90.60	269.67	7,072.88	-403.79	-1,357.33	1,389.11	0.00	0.00	0.00
8,700.00	90.60	269.67	7,071.84	-404.37	-1,457.33	1,488.72	0.00	0.00	0.00
8,800.00	90.60	269.67	7,070.79	-404.95	-1,557.32	1,588.33	0.00	0.00	0.00
8,900.00	90.60	269.67	7,069.74	-405.53	-1,657.31	1,687.94	0.00	0.00	0.00
9,000.00	90.60	269.67	7,068.70	-406.11	-1,757.31	1,787.55	0.00	0.00	0.00
9,100.00	90.60	269.67	7,067.65	-406.68	-1,857.30	1,887.16	0.00	0.00	0.00
9,200.00	90.60	269.67	7,066.60	-407.26	-1,957.29	1,986.77	0.00	0.00	0.00
9,300.00	90.60	269.67	7,065.55	-407.84	-2,057.28	2,086.38	0.00	0.00	0.00
9,400.00	90.60	269.67	7,064.51	-408.42	-2,157.28	2,185.99	0.00	0.00	0.00
9,500.00	90.60	269.67	7,063.46	-409.00	-2,257.27	2,285.60	0.00	0.00	0.00
9,600.00	90.60	269.67	7,062.41	-409.57	-2,357.26	2,385.21	0.00	0.00	0.00
9,700.00	90.60	269.67	7,061.37	-410.15	-2,457.26	2,484.82	0.00	0.00	0.00



<b>Database:</b>	Compass DB	<b>Local Co-ordinate Reference:</b>	Well Windsor LV E-14H
<b>Company:</b>	Bayswater	<b>TVD Reference:</b>	WELL @ 4846.00usft (Original Well Elev)
<b>Project:</b>	Windsor	<b>MD Reference:</b>	WELL @ 4846.00usft (Original Well Elev)
<b>Site:</b>	Windsor LV 14H	<b>North Reference:</b>	True
<b>Well:</b>	Windsor LV E-14H	<b>Survey Calculation Method:</b>	Minimum Curvature
<b>Wellbore:</b>	Windsor LV E-14H		
<b>Design:</b>	Windsor LV E-14H		

**Planned Survey**

Measured Depth (usft)	Inclination (°)	Azimuth (°)	Vertical Depth (usft)	+N/-S (usft)	+E/-W (usft)	Vertical Section (usft)	Dogleg Rate (°/100usft)	Build Rate (°/100usft)	Turn Rate (°/100usft)
9,800.00	90.60	269.67	7,060.32	-410.73	-2,557.25	2,584.43	0.00	0.00	0.00
9,900.00	90.60	269.67	7,059.27	-411.31	-2,657.24	2,684.04	0.00	0.00	0.00
10,000.00	90.60	269.67	7,058.22	-411.88	-2,757.23	2,783.65	0.00	0.00	0.00
10,100.00	90.60	269.67	7,057.18	-412.46	-2,857.23	2,883.26	0.00	0.00	0.00
10,200.00	90.60	269.67	7,056.13	-413.04	-2,957.22	2,982.87	0.00	0.00	0.00
10,300.00	90.60	269.67	7,055.08	-413.61	-3,057.21	3,082.48	0.00	0.00	0.00
10,400.00	90.60	269.67	7,054.04	-414.19	-3,157.21	3,182.09	0.00	0.00	0.00
10,500.00	90.60	269.67	7,052.99	-414.77	-3,257.20	3,281.70	0.00	0.00	0.00
10,600.00	90.60	269.67	7,051.94	-415.35	-3,357.19	3,381.31	0.00	0.00	0.00
10,700.00	90.60	269.67	7,050.89	-415.92	-3,457.18	3,480.92	0.00	0.00	0.00
10,800.00	90.60	269.67	7,049.85	-416.50	-3,557.18	3,580.53	0.00	0.00	0.00
10,900.00	90.60	269.67	7,048.80	-417.08	-3,657.17	3,680.14	0.00	0.00	0.00
11,000.00	90.60	269.67	7,047.75	-417.65	-3,757.16	3,779.75	0.00	0.00	0.00
11,100.00	90.60	269.67	7,046.71	-418.23	-3,857.16	3,879.36	0.00	0.00	0.00
11,200.00	90.60	269.67	7,045.66	-418.81	-3,957.15	3,978.97	0.00	0.00	0.00
11,300.00	90.60	269.67	7,044.61	-419.38	-4,057.14	4,078.58	0.00	0.00	0.00
11,400.00	90.60	269.67	7,043.56	-419.96	-4,157.13	4,178.19	0.00	0.00	0.00
11,500.00	90.60	269.67	7,042.52	-420.53	-4,257.13	4,277.79	0.00	0.00	0.00
11,600.00	90.60	269.67	7,041.47	-421.11	-4,357.12	4,377.40	0.00	0.00	0.00
11,700.00	90.60	269.67	7,040.42	-421.69	-4,457.11	4,477.01	0.00	0.00	0.00
11,740.00	90.60	269.67	7,040.00	-421.92	-4,497.11	4,516.86	0.00	0.00	0.00
TD at 11740.00 - Toe Up End Point									

**Design Targets**

Target Name	Dip Angle (°)	Dip Dir. (°)	TVD (usft)	+N/-S (usft)	+E/-W (usft)	Northing (usft)	Easting (usft)	Latitude	Longitude
- hit/miss target									
- Shape									
Toe Up End Point	0.00	0.00	7,040.00	-422.19	-4,531.10	1,968,078.600	3,175,681.230	40.489440	-104.868540
- plan misses target center by 33.99usft at 11740.00usft MD (7040.00 TVD, -421.92 N, -4497.11 E)									
- Circle (radius 25.00)									
LV E-14H Landing	0.00	0.00	7,085.00	-397.09	-200.27	1,968,134.588	3,180,012.773	40.489510	-104.852970
- plan hits target center									
- Circle (radius 15.00)									

**Formations**

Measured Depth (usft)	Vertical Depth (usft)	Name	Lithology	Dip (°)	Dip Direction (°)
7,221.18	7,045.00	Nio Entry		0.00	

<b>Database:</b>	Compass DB	<b>Local Co-ordinate Reference:</b>	Well Windsor LV E-14H
<b>Company:</b>	Bayswater	<b>TVD Reference:</b>	WELL @ 4846.00usft (Original Well Elev)
<b>Project:</b>	Windsor	<b>MD Reference:</b>	WELL @ 4846.00usft (Original Well Elev)
<b>Site:</b>	Windsor LV 14H	<b>North Reference:</b>	True
<b>Well:</b>	Windsor LV E-14H	<b>Survey Calculation Method:</b>	Minimum Curvature
<b>Wellbore:</b>	Windsor LV E-14H		
<b>Design:</b>	Windsor LV E-14H		

Plan Annotations				
Measured Depth (usft)	Vertical Depth (usft)	Local Coordinates		Comment
		+N/-S (usft)	+E/-W (usft)	
700.00	700.00	0.00	0.00	Start Build 2.00
962.09	961.72	-8.21	8.73	Start 5536.83 hold at 962.09 MD
6,498.92	6,475.40	-354.78	377.18	Start DLS 10.00 TFO 136.26
7,442.85	7,085.00	-397.09	-200.27	Start DLS 0.00 TFO 88.20
11,740.00	7,040.00	-421.92	-4,497.11	TD at 11740.00