



Bill Barrett Corporation

COMPANY DETAILS: BILL BARRETT CORP

Calculation Method: Minimum Curvature
Error System: ISCWSA
Scan Method: Closest Approach 3D
Error Surface: Elliptical Conic
Warning Method: Error Ratio

REFERENCE INFORMATION

Co-ordinate (N/E) Reference: Well Anschutz State 5-62-36-6457CH, True North
Vertical (TVD) Reference: KB @ 4582.0ft (Original Well Elev)
Section (VS) Reference: Slot - (0.0N, 0.0E)
Measured Depth Reference: KB @ 4582.0ft (Original Well Elev)
Calculation Method: Minimum Curvature

WELL DETAILS: Anschutz State 5-62-36-6457CH

+N/-S	+E/-W	Northing	Easting	Latitude	Longitude
0.0	0.0	1373802.68	3340063.74	40° 21' 11.041 N	104° 16' 47.269 W

SECTION DETAILS

Sec	MD	Inc	Azi	TVD	+N/-S	+E/-W	DLeg	TFace	VSec	Target
1	0.0	0.00	0.00	0.0	0.0	0.0	0.00	0.00	0.0	
2	900.0	0.00	0.00	900.0	0.0	0.0	0.00	0.00	0.0	
3	1822.6	13.84	195.87	1813.6	-106.6	-30.3	1.50	195.87	-12.9	
4	4589.5	13.84	195.87	4500.3	-743.2	-211.4	0.00	0.00	-90.1	
5	5281.5	0.00	0.00	5185.5	-823.2	-234.1	2.00	180.00	-99.8	
6	5781.5	0.00	0.00	5685.5	-823.2	-234.1	0.00	0.00	-99.8	
7	6532.0	90.06	89.10	6163.0	-815.7	243.8	12.00	89.10	370.8	AS 6457CH LP
8	10908.6	90.06	89.10	6158.4	-746.6	4619.9	0.00	0.00	4679.9	AS 6457CH PBHL

PROJECT DETAILS: WELD COUNTY, COLORADO

Geodetic System: US State Plane 1983
Datum: North American Datum 1983
Ellipsoid: GRS 1980
Zone: Colorado Northern Zone

FORMATION TOP DETAILS

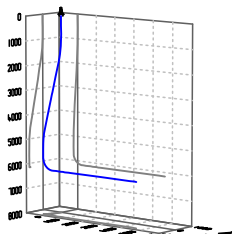
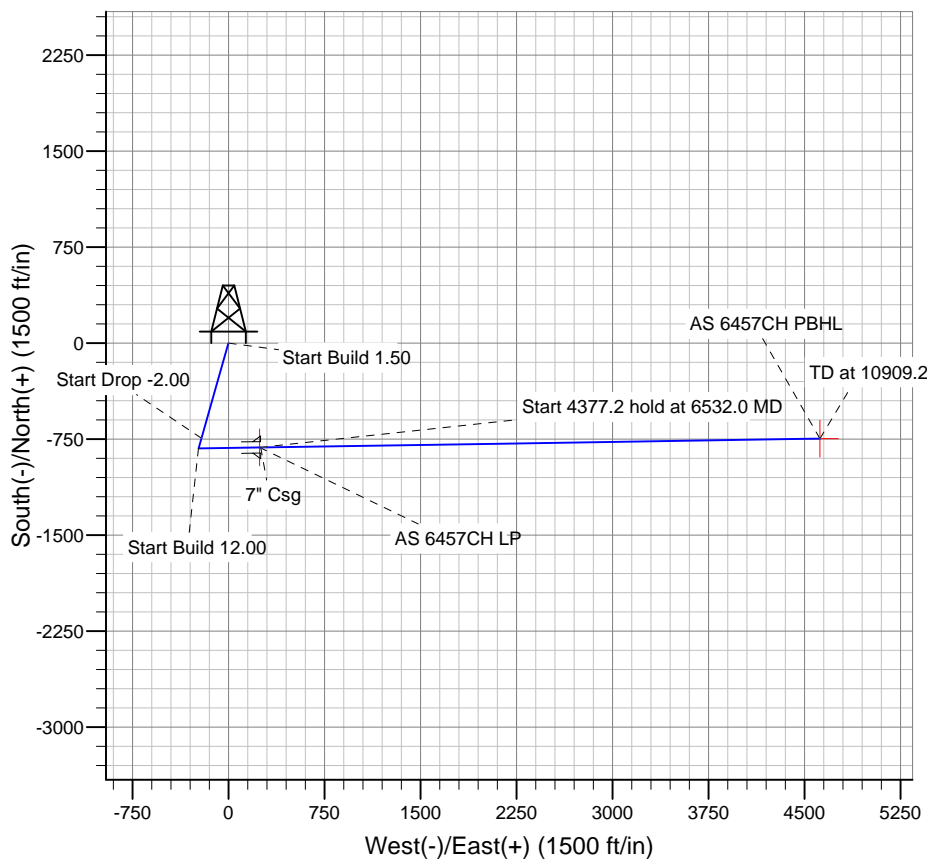
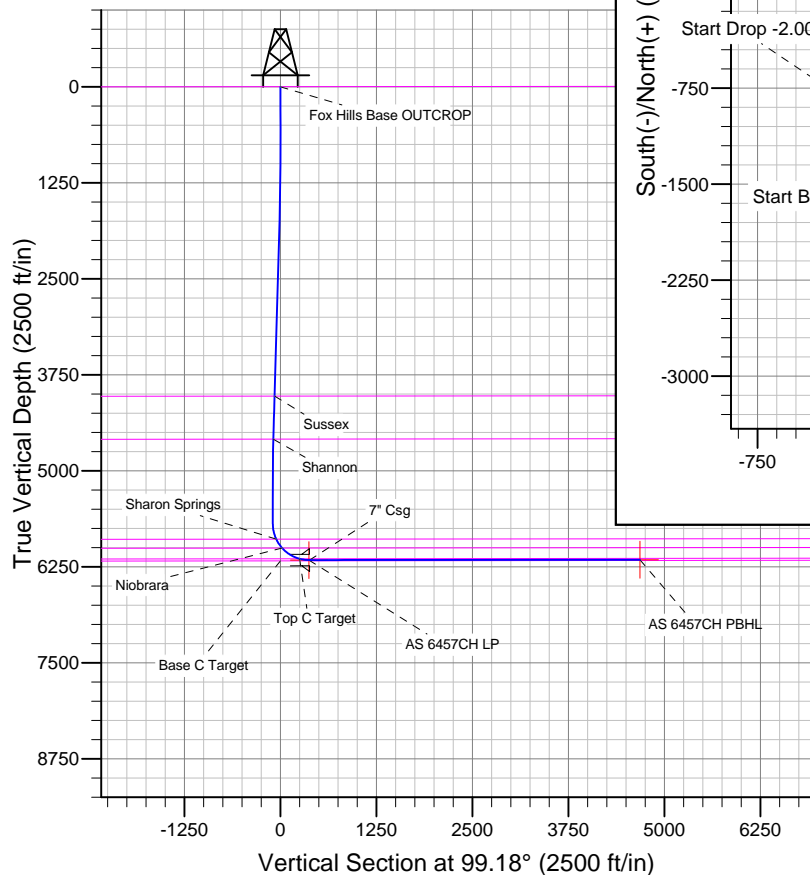
TVDPath	MDPath	Formation
		Base C Target
		Fox Hills Base OUTCROP
4028.2	4103.3	Sussex
4588.2	4679.8	Shannon
5892.2	5995.2	Sharon Springs
6007.1	6134.4	Niobrara
6146.9	6407.2	Top C Target

CASING DETAILS

TVD	MD	Name	Size
6163.0	6540.0	7" Csg	7

WELLBORE TARGET DETAILS

Name	TVD	+N/-S	+E/-W	Shape
AS 6457CH PBHL	6158.0	-746.4	4620.5	Point
AS 6457CH LP	6163.0	-815.7	243.9	Point



Azimuths to True North
Magnetic North: 8.32°
Magnetic Field
Strength: 52939.1snT
Dip Angle: 67.02°
Date: 7/18/2013
Model: IGRF2010

BILL BARRETT CORP

WELD COUNTY, COLORADO

Anschutz State 5-62-36

Anschutz State 5-62-36-6457CH

Wellbore #1

Plan: Design #1

Standard Planning Report

18 July, 2013

Bill Barrett Corp

Planning Report

Database:	Compass	Local Co-ordinate Reference:	Well Anschutz State 5-62-36-6457CH
Company:	BILL BARRETT CORP	TVD Reference:	KB @ 4582.0ft (Original Well Elev)
Project:	WELD COUNTY, COLORADO	MD Reference:	KB @ 4582.0ft (Original Well Elev)
Site:	Anschutz State 5-62-36	North Reference:	True
Well:	Anschutz State 5-62-36-6457CH	Survey Calculation Method:	Minimum Curvature
Wellbore:	Wellbore #1		
Design:	Design #1		

Project	WELD COUNTY, COLORADO		
Map System:	US State Plane 1983	System Datum:	Mean Sea Level
Geo Datum:	North American Datum 1983		
Map Zone:	Colorado Northern Zone		

Site		Anschutz State 5-62-36				
Site Position:		Northing:	1,373,802.68 ft	Latitude:	40° 21' 11.041 N	
From:	Lat/Long	Easting:	3,340,063.71 ft	Longitude:	104° 16' 47.269 W	
Position Uncertainty:		0.0 ft	Slot Radius:	"	Grid Convergence:	0.79 °

Well	Anschutz State 5-62-36-6457CH					
Well Position	+N-S	0.0 ft	Northing:	1,373,802.68 ft	Latitude:	40° 21' 11.041 N
	+E-W	0.0 ft	Easting:	3,340,063.71 ft	Longitude:	104° 16' 47.269 W
Position Uncertainty		0.0 ft	Wellhead Elevation:	ft	Ground Level:	4,562.0 ft

Wellbore	Wellbore #1				
Magnetics	Model Name	Sample Date	Declination (°)	Dip Angle (°)	Field Strength (nT)
	IGRF2010	7/18/2013	8.32	67.02	52,939

Design	Design #1				
Audit Notes:					
Version:	Phase:	PLAN		Tie On Depth:	0.0
Vertical Section:	Depth From (TVD) (ft)	+N/-S (ft)	+E/-W (ft)	Direction (°)	
	0.0	0.0	0.0	99.18	

Plan Sections										
Measured Depth (ft)	Inclination (°)	Azimuth (°)	Vertical Depth (ft)	+N/-S (ft)	+E/-W (ft)	Dogleg Rate (°/100ft)	Build Rate (°/100ft)	Turn Rate (°/100ft)	TFO (°)	Target
0.0	0.00	0.00	0.0	0.0	0.0	0.00	0.00	0.00	0.00	
900.0	0.00	0.00	900.0	0.0	0.0	0.00	0.00	0.00	0.00	
1,822.6	13.84	195.87	1,813.6	-106.6	-30.3	1.50	1.50	0.00	195.87	
4,589.5	13.84	195.87	4,500.3	-743.2	-211.4	0.00	0.00	0.00	0.00	
5,281.5	0.00	0.00	5,185.5	-823.2	-234.1	2.00	-2.00	0.00	180.00	
5,781.5	0.00	0.00	5,685.5	-823.2	-234.1	0.00	0.00	0.00	0.00	
6,532.0	90.06	89.10	6,163.0	-815.7	243.8	12.00	12.00	0.00	89.10	AS 6457CH LP
10,908.6	90.06	89.10	6,158.4	-746.6	4,619.9	0.00	0.00	0.00	0.00	AS 6457CH PBHL

Bill Barrett Corp

Planning Report

Database:	Compass	Local Co-ordinate Reference:	Well Anschutz State 5-62-36-6457CH
Company:	BILL BARRETT CORP	TVD Reference:	KB @ 4582.0ft (Original Well Elev)
Project:	WELD COUNTY, COLORADO	MD Reference:	KB @ 4582.0ft (Original Well Elev)
Site:	Anschutz State 5-62-36	North Reference:	True
Well:	Anschutz State 5-62-36-6457CH	Survey Calculation Method:	Minimum Curvature
Wellbore:	Wellbore #1		
Design:	Design #1		

Planned Survey									
Measured Depth (ft)	Inclination (°)	Azimuth (°)	Vertical Depth (ft)	+N/-S (ft)	+E/-W (ft)	Vertical Section (ft)	Dogleg Rate (°/100ft)	Build Rate (°/100ft)	Turn Rate (°/100ft)
0.0	0.00	0.00	0.0	0.0	0.0	0.0	0.00	0.00	0.00
100.0	0.00	0.00	100.0	0.0	0.0	0.0	0.00	0.00	0.00
200.0	0.00	0.00	200.0	0.0	0.0	0.0	0.00	0.00	0.00
300.0	0.00	0.00	300.0	0.0	0.0	0.0	0.00	0.00	0.00
400.0	0.00	0.00	400.0	0.0	0.0	0.0	0.00	0.00	0.00
500.0	0.00	0.00	500.0	0.0	0.0	0.0	0.00	0.00	0.00
600.0	0.00	0.00	600.0	0.0	0.0	0.0	0.00	0.00	0.00
700.0	0.00	0.00	700.0	0.0	0.0	0.0	0.00	0.00	0.00
800.0	0.00	0.00	800.0	0.0	0.0	0.0	0.00	0.00	0.00
900.0	0.00	0.00	900.0	0.0	0.0	0.0	0.00	0.00	0.00
1,000.0	1.50	195.87	1,000.0	-1.3	-0.4	-0.2	1.50	1.50	0.00
1,100.0	3.00	195.87	1,099.9	-5.0	-1.4	-0.6	1.50	1.50	0.00
1,200.0	4.50	195.87	1,199.7	-11.3	-3.2	-1.4	1.50	1.50	0.00
1,300.0	6.00	195.87	1,299.3	-20.1	-5.7	-2.4	1.50	1.50	0.00
1,400.0	7.50	195.87	1,398.6	-31.4	-8.9	-3.8	1.50	1.50	0.00
1,500.0	9.00	195.87	1,497.5	-45.2	-12.9	-5.5	1.50	1.50	0.00
1,600.0	10.50	195.87	1,596.1	-61.5	-17.5	-7.5	1.50	1.50	0.00
1,700.0	12.00	195.87	1,694.2	-80.3	-22.8	-9.7	1.50	1.50	0.00
1,800.0	13.50	195.87	1,791.7	-101.5	-28.9	-12.3	1.50	1.50	0.00
1,822.6	13.84	195.87	1,813.6	-106.6	-30.3	-12.9	1.50	1.50	0.00
1,900.0	13.84	195.87	1,888.8	-124.5	-35.4	-15.1	0.00	0.00	0.00
2,000.0	13.84	195.87	1,985.9	-147.5	-41.9	-17.9	0.00	0.00	0.00
2,100.0	13.84	195.87	2,083.0	-170.5	-48.5	-20.7	0.00	0.00	0.00
2,200.0	13.84	195.87	2,180.1	-193.5	-55.0	-23.5	0.00	0.00	0.00
2,300.0	13.84	195.87	2,277.2	-216.5	-61.6	-26.2	0.00	0.00	0.00
2,400.0	13.84	195.87	2,374.3	-239.5	-68.1	-29.0	0.00	0.00	0.00
2,500.0	13.84	195.87	2,471.4	-262.5	-74.6	-31.8	0.00	0.00	0.00
2,600.0	13.84	195.87	2,568.5	-285.5	-81.2	-34.6	0.00	0.00	0.00
2,700.0	13.84	195.87	2,665.6	-308.5	-87.7	-37.4	0.00	0.00	0.00
2,800.0	13.84	195.87	2,762.7	-331.5	-94.3	-40.2	0.00	0.00	0.00
2,900.0	13.84	195.87	2,859.8	-354.5	-100.8	-43.0	0.00	0.00	0.00
3,000.0	13.84	195.87	2,956.9	-377.5	-107.4	-45.8	0.00	0.00	0.00
3,100.0	13.84	195.87	3,054.0	-400.5	-113.9	-48.6	0.00	0.00	0.00
3,200.0	13.84	195.87	3,151.1	-423.5	-120.4	-51.3	0.00	0.00	0.00
3,300.0	13.84	195.87	3,248.2	-446.5	-127.0	-54.1	0.00	0.00	0.00
3,400.0	13.84	195.87	3,345.3	-469.6	-133.5	-56.9	0.00	0.00	0.00
3,500.0	13.84	195.87	3,442.4	-492.6	-140.1	-59.7	0.00	0.00	0.00
3,600.0	13.84	195.87	3,539.5	-515.6	-146.6	-62.5	0.00	0.00	0.00
3,700.0	13.84	195.87	3,636.6	-538.6	-153.2	-65.3	0.00	0.00	0.00
3,800.0	13.84	195.87	3,733.7	-561.6	-159.7	-68.1	0.00	0.00	0.00
3,900.0	13.84	195.87	3,830.8	-584.6	-166.2	-70.9	0.00	0.00	0.00
4,000.0	13.84	195.87	3,927.9	-607.6	-172.8	-73.7	0.00	0.00	0.00
4,100.0	13.84	195.87	4,025.0	-630.6	-179.3	-76.4	0.00	0.00	0.00
4,103.3	13.84	195.87	4,028.2	-631.4	-179.5	-76.5	0.00	0.00	0.00
Sussex									
4,200.0	13.84	195.87	4,122.1	-653.6	-185.9	-79.2	0.00	0.00	0.00
4,300.0	13.84	195.87	4,219.1	-676.6	-192.4	-82.0	0.00	0.00	0.00
4,400.0	13.84	195.87	4,316.2	-699.6	-199.0	-84.8	0.00	0.00	0.00
4,500.0	13.84	195.87	4,413.3	-722.6	-205.5	-87.6	0.00	0.00	0.00
4,589.5	13.84	195.87	4,500.3	-743.2	-211.4	-90.1	0.00	0.00	0.00
4,600.0	13.63	195.87	4,510.4	-745.6	-212.0	-90.4	2.00	-2.00	0.00
4,679.8	12.03	195.87	4,588.2	-762.6	-216.9	-92.5	2.00	-2.00	0.00
Shannon									
4,700.0	11.63	195.87	4,608.0	-766.6	-218.0	-92.9	2.00	-2.00	0.00

Bill Barrett Corp

Planning Report

Database:	Compass	Local Co-ordinate Reference:	Well Anschutz State 5-62-36-6457CH
Company:	BILL BARRETT CORP	TVD Reference:	KB @ 4582.0ft (Original Well Elev)
Project:	WELD COUNTY, COLORADO	MD Reference:	KB @ 4582.0ft (Original Well Elev)
Site:	Anschutz State 5-62-36	North Reference:	True
Well:	Anschutz State 5-62-36-6457CH	Survey Calculation Method:	Minimum Curvature
Wellbore:	Wellbore #1		
Design:	Design #1		

Planned Survey									
Measured Depth (ft)	Inclination (°)	Azimuth (°)	Vertical Depth (ft)	+N/-S (ft)	+E/-W (ft)	Vertical Section (ft)	Dogleg Rate (°/100ft)	Build Rate (°/100ft)	Turn Rate (°/100ft)
4,800.0	9.63	195.87	4,706.3	-784.4	-223.1	-95.1	2.00	-2.00	0.00
4,900.0	7.63	195.87	4,805.2	-798.8	-227.2	-96.8	2.00	-2.00	0.00
5,000.0	5.63	195.87	4,904.5	-809.9	-230.3	-98.2	2.00	-2.00	0.00
5,100.0	3.63	195.87	5,004.2	-817.7	-232.5	-99.1	2.00	-2.00	0.00
5,200.0	1.63	195.87	5,104.0	-822.1	-233.8	-99.7	2.00	-2.00	0.00
5,281.5	0.00	0.00	5,185.5	-823.2	-234.1	-99.8	2.00	-2.00	0.00
5,300.0	0.00	0.00	5,204.0	-823.2	-234.1	-99.8	0.00	0.00	0.00
5,400.0	0.00	0.00	5,304.0	-823.2	-234.1	-99.8	0.00	0.00	0.00
5,500.0	0.00	0.00	5,404.0	-823.2	-234.1	-99.8	0.00	0.00	0.00
5,600.0	0.00	0.00	5,504.0	-823.2	-234.1	-99.8	0.00	0.00	0.00
5,700.0	0.00	0.00	5,604.0	-823.2	-234.1	-99.8	0.00	0.00	0.00
5,781.5	0.00	0.00	5,685.5	-823.2	-234.1	-99.8	0.00	0.00	0.00
5,800.0	2.22	89.10	5,704.0	-823.2	-233.7	-99.4	12.00	12.00	0.00
5,900.0	14.22	89.10	5,802.8	-823.0	-219.5	-85.4	12.00	12.00	0.00
5,995.2	25.65	89.10	5,892.2	-822.5	-187.0	-53.5	12.00	12.00	0.00
Sharon Springs									
6,000.0	26.22	89.10	5,896.5	-822.4	-185.0	-51.4	12.00	12.00	0.00
6,100.0	38.22	89.10	5,980.9	-821.6	-131.7	1.0	12.00	12.00	0.00
6,134.4	42.35	89.10	6,007.1	-821.2	-109.5	22.9	12.00	12.00	0.00
Niobrara									
6,200.0	50.22	89.10	6,052.5	-820.5	-62.1	69.5	12.00	12.00	0.00
6,300.0	62.22	89.10	6,108.0	-819.2	20.8	151.2	12.00	12.00	0.00
6,400.0	74.22	89.10	6,145.0	-817.7	113.5	242.5	12.00	12.00	0.00
6,407.2	75.09	89.10	6,146.9	-817.6	120.5	249.3	12.00	12.00	0.00
Top C Target									
6,500.0	86.22	89.10	6,161.9	-816.2	211.9	339.3	12.00	12.00	0.00
6,532.0	90.06	89.10	6,163.0	-815.7	243.8	370.8	12.00	12.00	0.00
6,532.0	90.06	89.10	6,163.0	-815.7	243.9	370.9	0.00	0.00	0.00
AS 6457CH LP									
6,540.0	90.06	89.10	6,163.0	-815.5	251.8	378.7	0.00	0.00	0.00
7" Csg									
6,600.0	90.06	89.10	6,162.9	-814.6	311.8	437.8	0.00	0.00	0.00
6,700.0	90.06	89.10	6,162.8	-813.0	411.8	536.2	0.00	0.00	0.00
6,800.0	90.06	89.10	6,162.7	-811.4	511.8	634.7	0.00	0.00	0.00
6,900.0	90.06	89.10	6,162.6	-809.8	611.8	733.1	0.00	0.00	0.00
7,000.0	90.06	89.10	6,162.5	-808.3	711.8	831.6	0.00	0.00	0.00
7,100.0	90.06	89.10	6,162.4	-806.7	811.8	930.0	0.00	0.00	0.00
7,200.0	90.06	89.10	6,162.3	-805.1	911.8	1,028.5	0.00	0.00	0.00
7,300.0	90.06	89.10	6,162.2	-803.5	1,011.7	1,127.0	0.00	0.00	0.00
7,400.0	90.06	89.10	6,162.1	-801.9	1,111.7	1,225.4	0.00	0.00	0.00
7,500.0	90.06	89.10	6,162.0	-800.4	1,211.7	1,323.9	0.00	0.00	0.00
7,600.0	90.06	89.10	6,161.8	-798.8	1,311.7	1,422.3	0.00	0.00	0.00
7,700.0	90.06	89.10	6,161.7	-797.2	1,411.7	1,520.8	0.00	0.00	0.00
7,800.0	90.06	89.10	6,161.6	-795.6	1,511.7	1,619.2	0.00	0.00	0.00
7,900.0	90.06	89.10	6,161.5	-794.1	1,611.7	1,717.7	0.00	0.00	0.00
8,000.0	90.06	89.10	6,161.4	-792.5	1,711.7	1,816.1	0.00	0.00	0.00
8,100.0	90.06	89.10	6,161.3	-790.9	1,811.6	1,914.6	0.00	0.00	0.00
8,200.0	90.06	89.10	6,161.2	-789.3	1,911.6	2,013.1	0.00	0.00	0.00
8,300.0	90.06	89.10	6,161.1	-787.7	2,011.6	2,111.5	0.00	0.00	0.00
8,400.0	90.06	89.10	6,161.0	-786.2	2,111.6	2,210.0	0.00	0.00	0.00
8,500.0	90.06	89.10	6,160.9	-784.6	2,211.6	2,308.4	0.00	0.00	0.00
8,600.0	90.06	89.10	6,160.8	-783.0	2,311.6	2,406.9	0.00	0.00	0.00
8,700.0	90.06	89.10	6,160.7	-781.4	2,411.6	2,505.3	0.00	0.00	0.00

Bill Barrett Corp

Planning Report

Database:	Compass	Local Co-ordinate Reference:	Well Anschutz State 5-62-36-6457CH
Company:	BILL BARRETT CORP	TVD Reference:	KB @ 4582.0ft (Original Well Elev)
Project:	WELD COUNTY, COLORADO	MD Reference:	KB @ 4582.0ft (Original Well Elev)
Site:	Anschutz State 5-62-36	North Reference:	True
Well:	Anschutz State 5-62-36-6457CH	Survey Calculation Method:	Minimum Curvature
Wellbore:	Wellbore #1		
Design:	Design #1		

Planned Survey

Measured Depth (ft)	Inclination (°)	Azimuth (°)	Vertical Depth (ft)	+N/-S (ft)	+E/-W (ft)	Vertical Section (ft)	Dogleg Rate (°/100ft)	Build Rate (°/100ft)	Turn Rate (°/100ft)
8,800.0	90.06	89.10	6,160.6	-779.8	2,511.6	2,603.8	0.00	0.00	0.00
8,900.0	90.06	89.10	6,160.5	-778.3	2,611.5	2,702.2	0.00	0.00	0.00
9,000.0	90.06	89.10	6,160.4	-776.7	2,711.5	2,800.7	0.00	0.00	0.00
9,100.0	90.06	89.10	6,160.3	-775.1	2,811.5	2,899.2	0.00	0.00	0.00
9,200.0	90.06	89.10	6,160.2	-773.5	2,911.5	2,997.6	0.00	0.00	0.00
9,300.0	90.06	89.10	6,160.1	-772.0	3,011.5	3,096.1	0.00	0.00	0.00
9,400.0	90.06	89.10	6,160.0	-770.4	3,111.5	3,194.5	0.00	0.00	0.00
9,500.0	90.06	89.10	6,159.9	-768.8	3,211.5	3,293.0	0.00	0.00	0.00
9,600.0	90.06	89.10	6,159.8	-767.2	3,311.5	3,391.4	0.00	0.00	0.00
9,700.0	90.06	89.10	6,159.6	-765.6	3,411.4	3,489.9	0.00	0.00	0.00
9,800.0	90.06	89.10	6,159.5	-764.1	3,511.4	3,588.3	0.00	0.00	0.00
9,900.0	90.06	89.10	6,159.4	-762.5	3,611.4	3,686.8	0.00	0.00	0.00
10,000.0	90.06	89.10	6,159.3	-760.9	3,711.4	3,785.3	0.00	0.00	0.00
10,100.0	90.06	89.10	6,159.2	-759.3	3,811.4	3,883.7	0.00	0.00	0.00
10,200.0	90.06	89.10	6,159.1	-757.7	3,911.4	3,982.2	0.00	0.00	0.00
10,300.0	90.06	89.10	6,159.0	-756.2	4,011.4	4,080.6	0.00	0.00	0.00
10,400.0	90.06	89.10	6,158.9	-754.6	4,111.4	4,179.1	0.00	0.00	0.00
10,500.0	90.06	89.10	6,158.8	-753.0	4,211.3	4,277.5	0.00	0.00	0.00
10,600.0	90.06	89.10	6,158.7	-751.4	4,311.3	4,376.0	0.00	0.00	0.00
10,700.0	90.06	89.10	6,158.6	-749.8	4,411.3	4,474.4	0.00	0.00	0.00
10,800.0	90.06	89.10	6,158.5	-748.3	4,511.3	4,572.9	0.00	0.00	0.00
10,900.0	90.06	89.10	6,158.4	-746.7	4,611.3	4,671.4	0.00	0.00	0.00
10,908.6	90.06	89.10	6,158.4	-746.6	4,619.9	4,679.9	0.00	0.00	0.00
AS 6457CH PBHL									

Casing Points

Measured Depth (ft)	Vertical Depth (ft)	Name	Casing Diameter (")	Hole Diameter (")
6,540.0	6,163.0	7" Csg	7	8-3/4

Formations

Measured Depth (ft)	Vertical Depth (ft)	Name	Lithology	Dip (°)	Dip Direction (°)
	0.0	Fox Hills Base OUTCROP		-0.06	89.10
4,103.3	4,028.0	Sussex		-0.06	89.10
4,679.8	4,588.0	Shannon		-0.06	89.10
5,995.2	5,892.0	Sharon Springs		-0.06	89.10
6,134.4	6,007.0	Niobrara		-0.06	89.10
6,407.2	6,147.0	Top C Target		-0.06	89.10
	6,173.0	Base C Target		-0.06	89.10