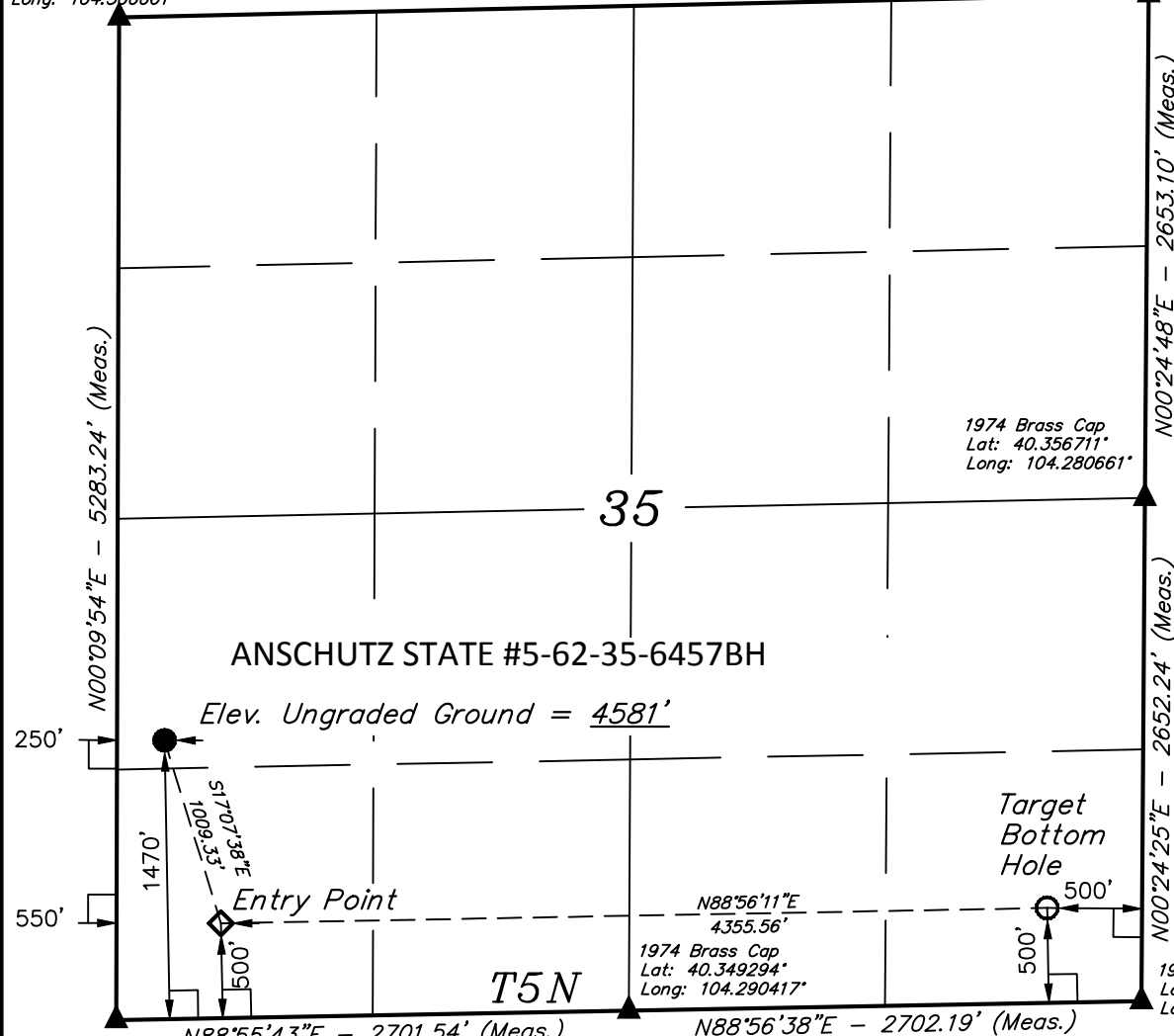


T5N, R62W, 6th P.M.

2011 UELS Cap,  
Flush W/Ground  
Lat: 40.363653°  
Long: 104.300061°

1974 Brass Cap  
1.0 Above Ground  
Lat: 40.363992°  
Long: 104.280594°

N88°42'31"E - 5426.94' (Meas.)



1974 Brass Cap  
Lat: 40.349153°  
Long: 104.300106°

T5N  
T4N

N88°56'11"E  
4355.56'  
1974 Brass Cap  
Lat: 40.349294°  
Long: 104.290417°

1974 Brass Cap  
Lat: 40.349433°  
Long: 104.280728°

BILL BARRETT CORPORATION

Well location, ANSCHUTZ STATE #5-62-35-6457BH, located as shown in the NW 1/4 SW 1/4 of Section 35, T5N, R62W, 6th P.M., Weld County, Colorado.

BASIS OF ELEVATION

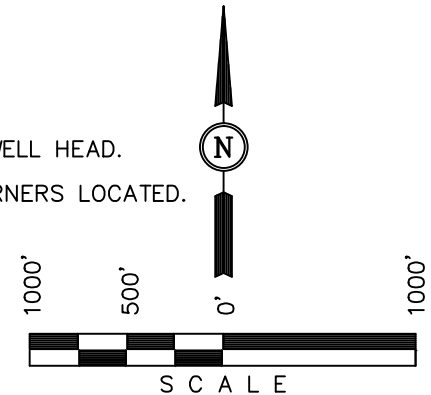
SPOT ELEVATION LOCATED AT THE NORTHEAST CORNER OF SECTION 24, T5N, R62W, 6th. P.M. TAKEN FROM THE POINT OF ROCKS, QUADRANGLE, COLORADO, WELD COUNTY, 7.5 MINUTE QUAD (TOPOGRAPHIC MAP) PUBLISHED BY THE UNITED STATES DEPARTMENT OF THE INTERIOR, GEOLOGICAL SURVEY. SAID ELEVATION IS MARKED AS BEING 4530 FEET.

BASIS OF BEARINGS

BASIS OF BEARINGS IS A G.P.S. OBSERVATION.

LEGEND:

- └─ = 90° SYMBOL
- = PROPOSED WELL HEAD.
- ▲ = SECTION CORNERS LOCATED.



CERTIFICATION

THIS IS TO CERTIFY THAT THE ABOVE PLAT WAS PREPARED FROM FIELD NOTES OF ACTUAL SURVEYS MADE BY ME OR UNDER MY SUPERVISION AND THAT THE SAME ARE TRUE AND CORRECT TO THE BEST OF MY KNOWLEDGE AND BELIEF.

REGISTERED LAND SURVEYOR  
REGISTRATION NO. 28285  
STATE OF COLORADO  
05-01-13

REVISED: 07-01-13

UINTAH ENGINEERING & LAND SURVEYING  
85 SOUTH 200 EAST - VERNAL, UTAH 84078  
(435) 789-1017

PDOP = 1.3

NAD 83 (TARGET BOTTOM HOLE)	NAD 83 (ENTRY POINT)	NAD 83 (SURFACE LOCATION)
LATITUDE = 40°21'02.80" (40.350778)	LATITUDE = 40°21'01.99" (40.350553)	LATITUDE = 40°21'11.52" (40.353200)
LONGITUDE = 104°16'57.03" (104.282508)	LONGITUDE = 104°17'53.27" (104.298131)	LONGITUDE = 104°17'57.11" (104.299197)
NAD 27 (TARGET BOTTOM HOLE)	NAD 27 (ENTRY POINT)	NAD 27 (SURFACE LOCATION)
LATITUDE = 40°21'02.87" (40.350797)	LATITUDE = 40°21'02.06" (40.350572)	LATITUDE = 40°21'11.59" (40.353219)
LONGITUDE = 104°16'55.21" (104.282003)	LONGITUDE = 104°17'51.44" (104.297622)	LONGITUDE = 104°17'55.28" (104.298689)
STATE PLANE NAD 83	STATE PLANE NAD 83	STATE PLANE NAD 83
N: 1372958.91 E: 3339319.34	N: 1372817.30 E: 3334967.24	N: 1373777.55 E: 3334656.81
STATE PLANE NAD 27	STATE PLANE NAD 27	STATE PLANE NAD 27
N: 372960.98 E: 2339469.45	N: 372819.36 E: 2335117.33	N: 373779.58 E: 2334806.90

SCALE 1" = 1000'	DATE SURVEYED: 06-19-13	DATE DRAWN: 06-25-13
PARTY B.L. D.W. B.D.H.	REFERENCES G.L.O. PLAT	
WEATHER HOT	FILE BILL BARRETT CORPORATION	