



**Bill Barrett Corporation**

## COMPANY DETAILS: BILL BARRETT CORP

Calculation Method: Minimum Curvature  
Error System: ISCWSA  
Scan Method: Closest Approach 3D  
Error Surface: Elliptical Conic  
Warning Method: Error Ratio

## REFERENCE INFORMATION

Co-ordinate (N/E) Reference: Well Anschutz State 5-62-35-6457BH, True North  
Vertical (TVD) Reference: KB @ 4601.0ft (Original Well Elev)  
Section (VS) Reference: Slot - (0.0N, 0.0E)  
Measured Depth Reference: KB @ 4601.0ft (Original Well Elev)  
Calculation Method: Minimum Curvature

## WELL DETAILS: Anschutz State 5-62-35-6457BH

+N/-S	+E/-W	Northing	Easting	Latitude	Longitude
0.0	0.0	1373777.32	3334656.74	40° 21' 11.520 N	104° 17' 57.109 W

## SECTION DETAILS

Sec	MD	Inc	Azi	TVD	+N/-S	+E/-W	DLeg	TFace	VSec	Target
1	0.0	0.00	0.00	0.0	0.0	0.0	0.00	0.00	0.0	
2	900.0	0.00	0.00	900.0	0.0	0.0	0.00	0.00	0.0	
3	2027.1	16.91	190.53	2010.8	-162.3	-30.2	1.50	190.53	0.6	
4	4437.9	16.91	190.53	4317.4	-851.6	-158.3	0.00	0.00	3.2	
5	5283.2	0.00	0.00	5150.5	-973.3	-180.9	2.00	180.00	3.6	
6	5783.2	0.00	0.00	5650.5	-973.3	-180.9	0.00	0.00	3.6	
7	6533.7	90.06	88.92	6128.0	-964.3	297.0	12.00	88.92	471.5	AS 6457BH LP
8	10888.9	90.06	88.92	6123.4	-882.2	4651.4	0.00	0.00	4734.3	AS 6457BH PBHL

## PROJECT DETAILS: WELD COUNTY, COLORADO

Geodetic System: US State Plane 1983  
Datum: North American Datum 1983  
Ellipsoid: GRS 1980  
Zone: Colorado Northern Zone

## FORMATION TOP DETAILS

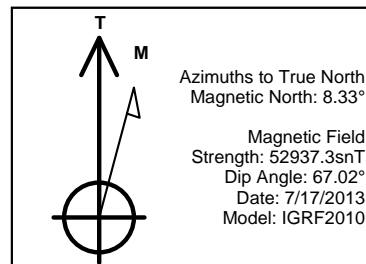
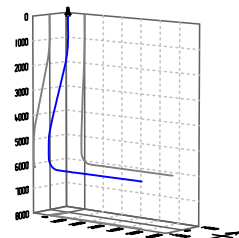
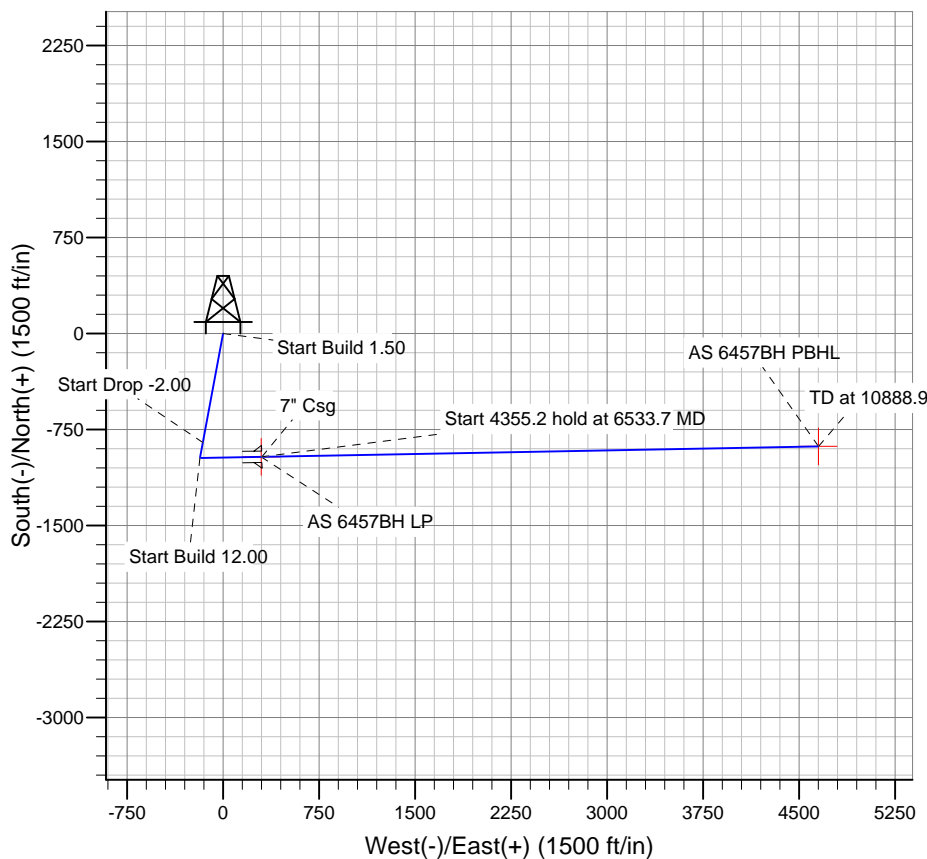
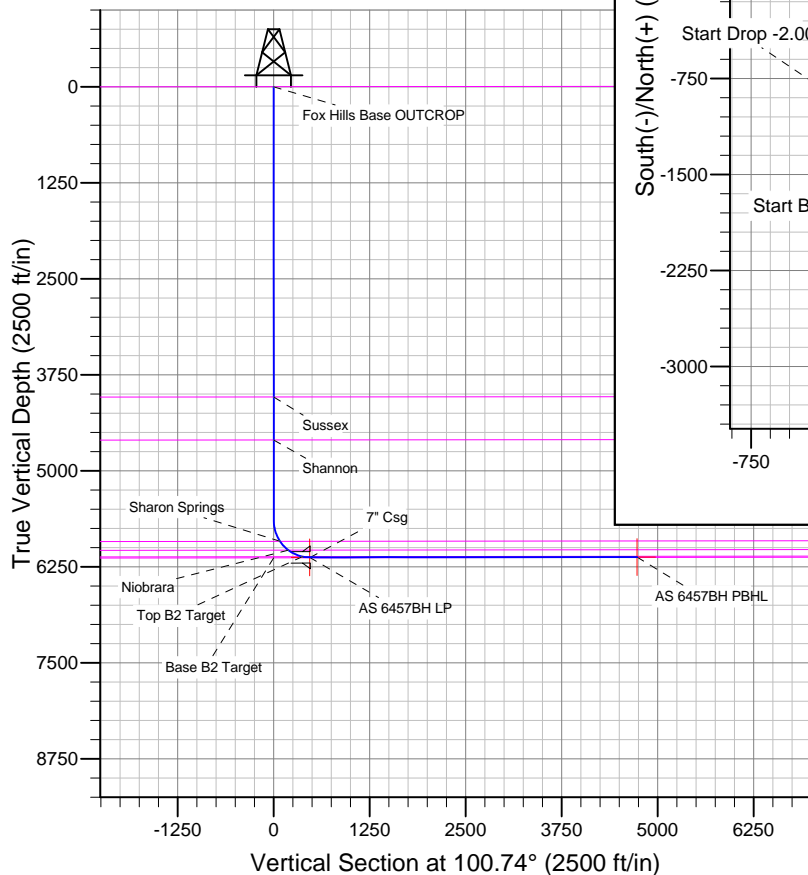
TVDPath	MDPath	Formation
		Base B2 Target
		Fox Hills Base OUTCROP
4040.2	4148.1	Sussex
4600.2	4729.5	Shannon
5918.1	6067.3	Sharon Springs
6033.0	6226.9	Niobrara
6117.8	6434.6	Top B2 Target

## CASING DETAILS

TVD	MD	Name	Size
6128.0	6540.0	7" Csg	7

## WELLBORE TARGET DETAILS

Name	TVD	+N/-S	+E/-W	Shape
AS 6457BH PBHL	6123.0	-881.9	4651.4	Point
AS 6457BH LP	6128.0	-964.3	297.1	Point



# **BILL BARRETT CORP**

**WELD COUNTY, COLORADO**

**Anschutz State 5-62-35**

**Anschutz State 5-62-35-6457BH**

**Wellbore #1**

**Plan: Design #1**

## **Standard Planning Report**

**18 July, 2013**

# Bill Barrett Corp

## Planning Report

<b>Database:</b>	Compass	<b>Local Co-ordinate Reference:</b>	Well Anschutz State 5-62-35-6457BH
<b>Company:</b>	BILL BARRETT CORP	<b>TVD Reference:</b>	KB @ 4601.0ft (Original Well Elev)
<b>Project:</b>	WELD COUNTY, COLORADO	<b>MD Reference:</b>	KB @ 4601.0ft (Original Well Elev)
<b>Site:</b>	Anschutz State 5-62-35	<b>North Reference:</b>	True
<b>Well:</b>	Anschutz State 5-62-35-6457BH	<b>Survey Calculation Method:</b>	Minimum Curvature
<b>Wellbore:</b>	Wellbore #1		
<b>Design:</b>	Design #1		

<b>Project</b>	WELD COUNTY, COLORADO		
<b>Map System:</b>	US State Plane 1983	<b>System Datum:</b>	Mean Sea Level
<b>Geo Datum:</b>	North American Datum 1983		
<b>Map Zone:</b>	Colorado Northern Zone		

Site		Anschutz State 5-62-35				
Site Position:		Northing:	1,373,777.32 ft	Latitude:	40° 21' 11.520 N	
From:	Lat/Long	Easting:	3,334,656.71 ft	Longitude:	104° 17' 57.109 W	
Position Uncertainty:		0.0 ft	Slot Radius:	"	Grid Convergence:	0.78 °

Well	Anschutz State 5-62-35-6457BH					
Well Position	+N-S	0.0 ft	Northing:	1,373,777.32 ft	Latitude:	40° 21' 11.520 N
	+E-W	0.0 ft	Easting:	3,334,656.71 ft	Longitude:	104° 17' 57.109 W
Position Uncertainty		0.0 ft	Wellhead Elevation:	ft	Ground Level:	4,581.0 ft

<b>Wellbore</b>	Wellbore #1				
<b>Magnetics</b>	<b>Model Name</b>	<b>Sample Date</b>	<b>Declination (°)</b>	<b>Dip Angle (°)</b>	<b>Field Strength (nT)</b>
	IGRF2010	7/17/2013	8.33	67.02	52,937

<b>Design</b>	Design #1				
<b>Audit Notes:</b>					
<b>Version:</b>	<b>Phase:</b>	PLAN		<b>Tie On Depth:</b>	0.0
<b>Vertical Section:</b>	<b>Depth From (TVD) (ft)</b>	<b>+N/-S (ft)</b>	<b>+E/-W (ft)</b>	<b>Direction (°)</b>	
	0.0	0.0	0.0	100.74	

<b>Plan Sections</b>										
Measured Depth (ft)	Inclination (°)	Azimuth (°)	Vertical Depth (ft)	+N/-S (ft)	+E/-W (ft)	Dogleg Rate (°/100ft)	Build Rate (°/100ft)	Turn Rate (°/100ft)	TFO (°)	Target
0.0	0.00	0.00	0.0	0.0	0.0	0.00	0.00	0.00	0.00	
900.0	0.00	0.00	900.0	0.0	0.0	0.00	0.00	0.00	0.00	
2,027.1	16.91	190.53	2,010.8	-162.3	-30.2	1.50	1.50	0.00	190.53	
4,437.9	16.91	190.53	4,317.4	-851.6	-158.3	0.00	0.00	0.00	0.00	
5,283.2	0.00	0.00	5,150.5	-973.3	-180.9	2.00	-2.00	0.00	180.00	
5,783.2	0.00	0.00	5,650.5	-973.3	-180.9	0.00	0.00	0.00	0.00	
6,533.7	90.06	88.92	6,128.0	-964.3	297.0	12.00	12.00	0.00	88.92	AS 6457BH LP
10,888.9	90.06	88.92	6,123.4	-882.2	4,651.4	0.00	0.00	0.00	0.00	AS 6457BH PBHL

# Bill Barrett Corp

## Planning Report

<b>Database:</b>	Compass	<b>Local Co-ordinate Reference:</b>	Well Anschutz State 5-62-35-6457BH
<b>Company:</b>	BILL BARRETT CORP	<b>TVD Reference:</b>	KB @ 4601.0ft (Original Well Elev)
<b>Project:</b>	WELD COUNTY, COLORADO	<b>MD Reference:</b>	KB @ 4601.0ft (Original Well Elev)
<b>Site:</b>	Anschutz State 5-62-35	<b>North Reference:</b>	True
<b>Well:</b>	Anschutz State 5-62-35-6457BH	<b>Survey Calculation Method:</b>	Minimum Curvature
<b>Wellbore:</b>	Wellbore #1		
<b>Design:</b>	Design #1		

Planned Survey									
Measured Depth (ft)	Inclination (°)	Azimuth (°)	Vertical Depth (ft)	+N/-S (ft)	+E/-W (ft)	Vertical Section (ft)	Dogleg Rate (°/100ft)	Build Rate (°/100ft)	Turn Rate (°/100ft)
0.0	0.00	0.00	0.0	0.0	0.0	0.0	0.00	0.00	0.00
100.0	0.00	0.00	100.0	0.0	0.0	0.0	0.00	0.00	0.00
200.0	0.00	0.00	200.0	0.0	0.0	0.0	0.00	0.00	0.00
300.0	0.00	0.00	300.0	0.0	0.0	0.0	0.00	0.00	0.00
400.0	0.00	0.00	400.0	0.0	0.0	0.0	0.00	0.00	0.00
500.0	0.00	0.00	500.0	0.0	0.0	0.0	0.00	0.00	0.00
600.0	0.00	0.00	600.0	0.0	0.0	0.0	0.00	0.00	0.00
700.0	0.00	0.00	700.0	0.0	0.0	0.0	0.00	0.00	0.00
800.0	0.00	0.00	800.0	0.0	0.0	0.0	0.00	0.00	0.00
900.0	0.00	0.00	900.0	0.0	0.0	0.0	0.00	0.00	0.00
1,000.0	1.50	190.53	1,000.0	-1.3	-0.2	0.0	1.50	1.50	0.00
1,100.0	3.00	190.53	1,099.9	-5.1	-1.0	0.0	1.50	1.50	0.00
1,200.0	4.50	190.53	1,199.7	-11.6	-2.2	0.0	1.50	1.50	0.00
1,300.0	6.00	190.53	1,299.3	-20.6	-3.8	0.1	1.50	1.50	0.00
1,400.0	7.50	190.53	1,398.6	-32.1	-6.0	0.1	1.50	1.50	0.00
1,500.0	9.00	190.53	1,497.5	-46.2	-8.6	0.2	1.50	1.50	0.00
1,600.0	10.50	190.53	1,596.1	-62.9	-11.7	0.2	1.50	1.50	0.00
1,700.0	12.00	190.53	1,694.2	-82.1	-15.3	0.3	1.50	1.50	0.00
1,800.0	13.50	190.53	1,791.7	-103.8	-19.3	0.4	1.50	1.50	0.00
1,900.0	15.00	190.53	1,888.6	-128.0	-23.8	0.5	1.50	1.50	0.00
2,000.0	16.50	190.53	1,984.9	-154.6	-28.7	0.6	1.50	1.50	0.00
2,027.1	16.91	190.53	2,010.8	-162.3	-30.2	0.6	1.50	1.50	0.00
2,100.0	16.91	190.53	2,080.6	-183.1	-34.0	0.7	0.00	0.00	0.00
2,200.0	16.91	190.53	2,176.2	-211.7	-39.4	0.8	0.00	0.00	0.00
2,300.0	16.91	190.53	2,271.9	-240.3	-44.7	0.9	0.00	0.00	0.00
2,400.0	16.91	190.53	2,367.6	-268.9	-50.0	1.0	0.00	0.00	0.00
2,500.0	16.91	190.53	2,463.3	-297.5	-55.3	1.1	0.00	0.00	0.00
2,600.0	16.91	190.53	2,559.0	-326.1	-60.6	1.2	0.00	0.00	0.00
2,700.0	16.91	190.53	2,654.6	-354.7	-65.9	1.3	0.00	0.00	0.00
2,800.0	16.91	190.53	2,750.3	-383.3	-71.2	1.4	0.00	0.00	0.00
2,900.0	16.91	190.53	2,846.0	-411.9	-76.6	1.5	0.00	0.00	0.00
3,000.0	16.91	190.53	2,941.7	-440.5	-81.9	1.6	0.00	0.00	0.00
3,100.0	16.91	190.53	3,037.3	-469.1	-87.2	1.7	0.00	0.00	0.00
3,200.0	16.91	190.53	3,133.0	-497.7	-92.5	1.9	0.00	0.00	0.00
3,300.0	16.91	190.53	3,228.7	-526.2	-97.8	2.0	0.00	0.00	0.00
3,400.0	16.91	190.53	3,324.4	-554.8	-103.1	2.1	0.00	0.00	0.00
3,500.0	16.91	190.53	3,420.1	-583.4	-108.4	2.2	0.00	0.00	0.00
3,600.0	16.91	190.53	3,515.7	-612.0	-113.8	2.3	0.00	0.00	0.00
3,700.0	16.91	190.53	3,611.4	-640.6	-119.1	2.4	0.00	0.00	0.00
3,800.0	16.91	190.53	3,707.1	-669.2	-124.4	2.5	0.00	0.00	0.00
3,900.0	16.91	190.53	3,802.8	-697.8	-129.7	2.6	0.00	0.00	0.00
4,000.0	16.91	190.53	3,898.4	-726.4	-135.0	2.7	0.00	0.00	0.00
4,100.0	16.91	190.53	3,994.1	-755.0	-140.3	2.8	0.00	0.00	0.00
4,148.1	16.91	190.53	4,040.2	-768.7	-142.9	2.9	0.00	0.00	0.00
<b>Sussex</b>									
4,200.0	16.91	190.53	4,089.8	-783.6	-145.6	2.9	0.00	0.00	0.00
4,300.0	16.91	190.53	4,185.5	-812.2	-150.9	3.0	0.00	0.00	0.00
4,400.0	16.91	190.53	4,281.2	-840.7	-156.3	3.1	0.00	0.00	0.00
4,437.9	16.91	190.53	4,317.4	-851.6	-158.3	3.2	0.00	0.00	0.00
4,500.0	15.66	190.53	4,377.0	-868.7	-161.5	3.2	2.00	-2.00	0.00
4,600.0	13.66	190.53	4,473.8	-893.6	-166.1	3.3	2.00	-2.00	0.00
4,700.0	11.66	190.53	4,571.3	-915.1	-170.1	3.4	2.00	-2.00	0.00
4,729.5	11.07	190.53	4,600.2	-920.8	-171.2	3.4	2.00	-2.00	0.00
<b>Shannon</b>									

# Bill Barrett Corp

## Planning Report

<b>Database:</b>	Compass	<b>Local Co-ordinate Reference:</b>	Well Anschutz State 5-62-35-6457BH
<b>Company:</b>	BILL BARRETT CORP	<b>TVD Reference:</b>	KB @ 4601.0ft (Original Well Elev)
<b>Project:</b>	WELD COUNTY, COLORADO	<b>MD Reference:</b>	KB @ 4601.0ft (Original Well Elev)
<b>Site:</b>	Anschutz State 5-62-35	<b>North Reference:</b>	True
<b>Well:</b>	Anschutz State 5-62-35-6457BH	<b>Survey Calculation Method:</b>	Minimum Curvature
<b>Wellbore:</b>	Wellbore #1		
<b>Design:</b>	Design #1		

Planned Survey									
Measured Depth (ft)	Inclination (°)	Azimuth (°)	Vertical Depth (ft)	+N/-S (ft)	+E/-W (ft)	Vertical Section (ft)	Dogleg Rate (°/100ft)	Build Rate (°/100ft)	Turn Rate (°/100ft)
4,800.0	9.66	190.53	4,669.6	-933.3	-173.5	3.5	2.00	-2.00	0.00
4,900.0	7.66	190.53	4,768.5	-948.1	-176.2	3.5	2.00	-2.00	0.00
5,000.0	5.66	190.53	4,867.8	-959.6	-178.3	3.6	2.00	-2.00	0.00
5,100.0	3.66	190.53	4,967.4	-967.5	-179.8	3.6	2.00	-2.00	0.00
5,200.0	1.66	190.53	5,067.3	-972.1	-180.7	3.6	2.00	-2.00	0.00
5,283.2	0.00	0.00	5,150.5	-973.3	-180.9	3.6	2.00	-2.00	0.00
5,300.0	0.00	0.00	5,167.3	-973.3	-180.9	3.6	0.00	0.00	0.00
5,400.0	0.00	0.00	5,267.3	-973.3	-180.9	3.6	0.00	0.00	0.00
5,500.0	0.00	0.00	5,367.3	-973.3	-180.9	3.6	0.00	0.00	0.00
5,600.0	0.00	0.00	5,467.3	-973.3	-180.9	3.6	0.00	0.00	0.00
5,700.0	0.00	0.00	5,567.3	-973.3	-180.9	3.6	0.00	0.00	0.00
5,783.2	0.00	0.00	5,650.5	-973.3	-180.9	3.6	0.00	0.00	0.00
5,800.0	2.02	88.92	5,667.3	-973.3	-180.6	3.9	12.00	12.00	0.00
5,900.0	14.02	88.92	5,766.2	-973.0	-166.7	17.5	12.00	12.00	0.00
6,000.0	26.02	88.92	5,859.9	-972.4	-132.5	51.0	12.00	12.00	0.00
6,067.3	34.09	88.92	5,918.1	-971.8	-98.9	83.9	12.00	12.00	0.00
Sharon Springs									
6,100.0	38.02	88.92	5,944.6	-971.4	-79.6	102.8	12.00	12.00	0.00
6,200.0	50.02	88.92	6,016.4	-970.1	-10.3	170.7	12.00	12.00	0.00
6,226.9	53.24	88.92	6,033.0	-969.7	10.8	191.3	12.00	12.00	0.00
Niobrara									
6,300.0	62.02	88.92	6,072.1	-968.5	72.5	251.7	12.00	12.00	0.00
6,400.0	74.02	88.92	6,109.5	-966.8	165.0	342.3	12.00	12.00	0.00
6,434.6	78.17	88.92	6,117.8	-966.1	198.6	375.1	12.00	12.00	0.00
Top B2 Target									
6,500.0	86.02	88.92	6,126.8	-964.9	263.3	438.5	12.00	12.00	0.00
6,533.7	90.06	88.92	6,128.0	-964.3	297.0	471.5	12.00	12.00	0.00
6,533.8	90.06	88.92	6,128.0	-964.3	297.1	471.6	0.00	0.00	0.00
AS 6457BH LP									
6,540.0	90.06	88.92	6,128.0	-964.2	303.3	477.6	0.00	0.00	0.00
7" Csg									
6,600.0	90.06	88.92	6,127.9	-963.0	363.3	536.4	0.00	0.00	0.00
6,700.0	90.06	88.92	6,127.8	-961.2	463.3	634.2	0.00	0.00	0.00
6,800.0	90.06	88.92	6,127.7	-959.3	563.2	732.1	0.00	0.00	0.00
6,900.0	90.06	88.92	6,127.6	-957.4	663.2	830.0	0.00	0.00	0.00
7,000.0	90.06	88.92	6,127.5	-955.5	763.2	927.9	0.00	0.00	0.00
7,100.0	90.06	88.92	6,127.4	-953.6	863.2	1,025.8	0.00	0.00	0.00
7,200.0	90.06	88.92	6,127.3	-951.7	963.2	1,123.6	0.00	0.00	0.00
7,300.0	90.06	88.92	6,127.2	-949.8	1,063.2	1,221.5	0.00	0.00	0.00
7,400.0	90.06	88.92	6,127.1	-947.9	1,163.1	1,319.4	0.00	0.00	0.00
7,500.0	90.06	88.92	6,127.0	-946.1	1,263.1	1,417.3	0.00	0.00	0.00
7,600.0	90.06	88.92	6,126.8	-944.2	1,363.1	1,515.2	0.00	0.00	0.00
7,700.0	90.06	88.92	6,126.7	-942.3	1,463.1	1,613.0	0.00	0.00	0.00
7,800.0	90.06	88.92	6,126.6	-940.4	1,563.1	1,710.9	0.00	0.00	0.00
7,900.0	90.06	88.92	6,126.5	-938.5	1,663.0	1,808.8	0.00	0.00	0.00
8,000.0	90.06	88.92	6,126.4	-936.6	1,763.0	1,906.7	0.00	0.00	0.00
8,100.0	90.06	88.92	6,126.3	-934.7	1,863.0	2,004.6	0.00	0.00	0.00
8,200.0	90.06	88.92	6,126.2	-932.9	1,963.0	2,102.4	0.00	0.00	0.00
8,300.0	90.06	88.92	6,126.1	-931.0	2,063.0	2,200.3	0.00	0.00	0.00
8,400.0	90.06	88.92	6,126.0	-929.1	2,163.0	2,298.2	0.00	0.00	0.00
8,500.0	90.06	88.92	6,125.9	-927.2	2,262.9	2,396.1	0.00	0.00	0.00
8,600.0	90.06	88.92	6,125.8	-925.3	2,362.9	2,494.0	0.00	0.00	0.00
8,700.0	90.06	88.92	6,125.7	-923.4	2,462.9	2,591.8	0.00	0.00	0.00

# Bill Barrett Corp

## Planning Report

<b>Database:</b>	Compass	<b>Local Co-ordinate Reference:</b>	Well Anschutz State 5-62-35-6457BH
<b>Company:</b>	BILL BARRETT CORP	<b>TVD Reference:</b>	KB @ 4601.0ft (Original Well Elev)
<b>Project:</b>	WELD COUNTY, COLORADO	<b>MD Reference:</b>	KB @ 4601.0ft (Original Well Elev)
<b>Site:</b>	Anschutz State 5-62-35	<b>North Reference:</b>	True
<b>Well:</b>	Anschutz State 5-62-35-6457BH	<b>Survey Calculation Method:</b>	Minimum Curvature
<b>Wellbore:</b>	Wellbore #1		
<b>Design:</b>	Design #1		

### Planned Survey

Measured Depth (ft)	Inclination (°)	Azimuth (°)	Vertical Depth (ft)	+N/-S (ft)	+E/-W (ft)	Vertical Section (ft)	Dogleg Rate (°/100ft)	Build Rate (°/100ft)	Turn Rate (°/100ft)
8,800.0	90.06	88.92	6,125.6	-921.5	2,562.9	2,689.7	0.00	0.00	0.00
8,900.0	90.06	88.92	6,125.5	-919.7	2,662.9	2,787.6	0.00	0.00	0.00
9,000.0	90.06	88.92	6,125.4	-917.8	2,762.9	2,885.5	0.00	0.00	0.00
9,100.0	90.06	88.92	6,125.3	-915.9	2,862.8	2,983.4	0.00	0.00	0.00
9,200.0	90.06	88.92	6,125.2	-914.0	2,962.8	3,081.2	0.00	0.00	0.00
9,300.0	90.06	88.92	6,125.1	-912.1	3,062.8	3,179.1	0.00	0.00	0.00
9,400.0	90.06	88.92	6,125.0	-910.2	3,162.8	3,277.0	0.00	0.00	0.00
9,500.0	90.06	88.92	6,124.9	-908.3	3,262.8	3,374.9	0.00	0.00	0.00
9,600.0	90.06	88.92	6,124.8	-906.5	3,362.7	3,472.8	0.00	0.00	0.00
9,700.0	90.06	88.92	6,124.6	-904.6	3,462.7	3,570.6	0.00	0.00	0.00
9,800.0	90.06	88.92	6,124.5	-902.7	3,562.7	3,668.5	0.00	0.00	0.00
9,900.0	90.06	88.92	6,124.4	-900.8	3,662.7	3,766.4	0.00	0.00	0.00
10,000.0	90.06	88.92	6,124.3	-898.9	3,762.7	3,864.3	0.00	0.00	0.00
10,100.0	90.06	88.92	6,124.2	-897.0	3,862.7	3,962.2	0.00	0.00	0.00
10,200.0	90.06	88.92	6,124.1	-895.1	3,962.6	4,060.0	0.00	0.00	0.00
10,300.0	90.06	88.92	6,124.0	-893.3	4,062.6	4,157.9	0.00	0.00	0.00
10,400.0	90.06	88.92	6,123.9	-891.4	4,162.6	4,255.8	0.00	0.00	0.00
10,500.0	90.06	88.92	6,123.8	-889.5	4,262.6	4,353.7	0.00	0.00	0.00
10,600.0	90.06	88.92	6,123.7	-887.6	4,362.6	4,451.6	0.00	0.00	0.00
10,700.0	90.06	88.92	6,123.6	-885.7	4,462.5	4,549.4	0.00	0.00	0.00
10,800.0	90.06	88.92	6,123.5	-883.8	4,562.5	4,647.3	0.00	0.00	0.00
10,888.9	90.06	88.92	6,123.4	-882.2	4,651.4	4,734.3	0.00	0.00	0.00
AS 6457BH PBHL									

### Casing Points

Measured Depth (ft)	Vertical Depth (ft)	Name	Casing Diameter (")	Hole Diameter (")
6,540.0	6,128.0	7" Csg	7	8-3/4

### Formations

Measured Depth (ft)	Vertical Depth (ft)	Name	Lithology	Dip (°)	Dip Direction (°)
	0.0	Fox Hills Base OUTCROP		-0.06	88.29
4,148.1	4,040.0	Sussex		-0.06	88.29
4,729.5	4,600.0	Shannon		-0.06	88.29
6,067.3	5,918.0	Sharon Springs		-0.06	88.29
6,226.9	6,033.0	Niobrara		-0.06	88.29
6,434.6	6,118.0	Top B2 Target		-0.06	88.29
	6,133.0	Base B2 Target		-0.06	88.29