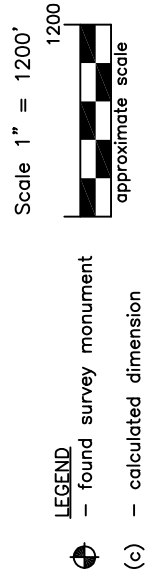
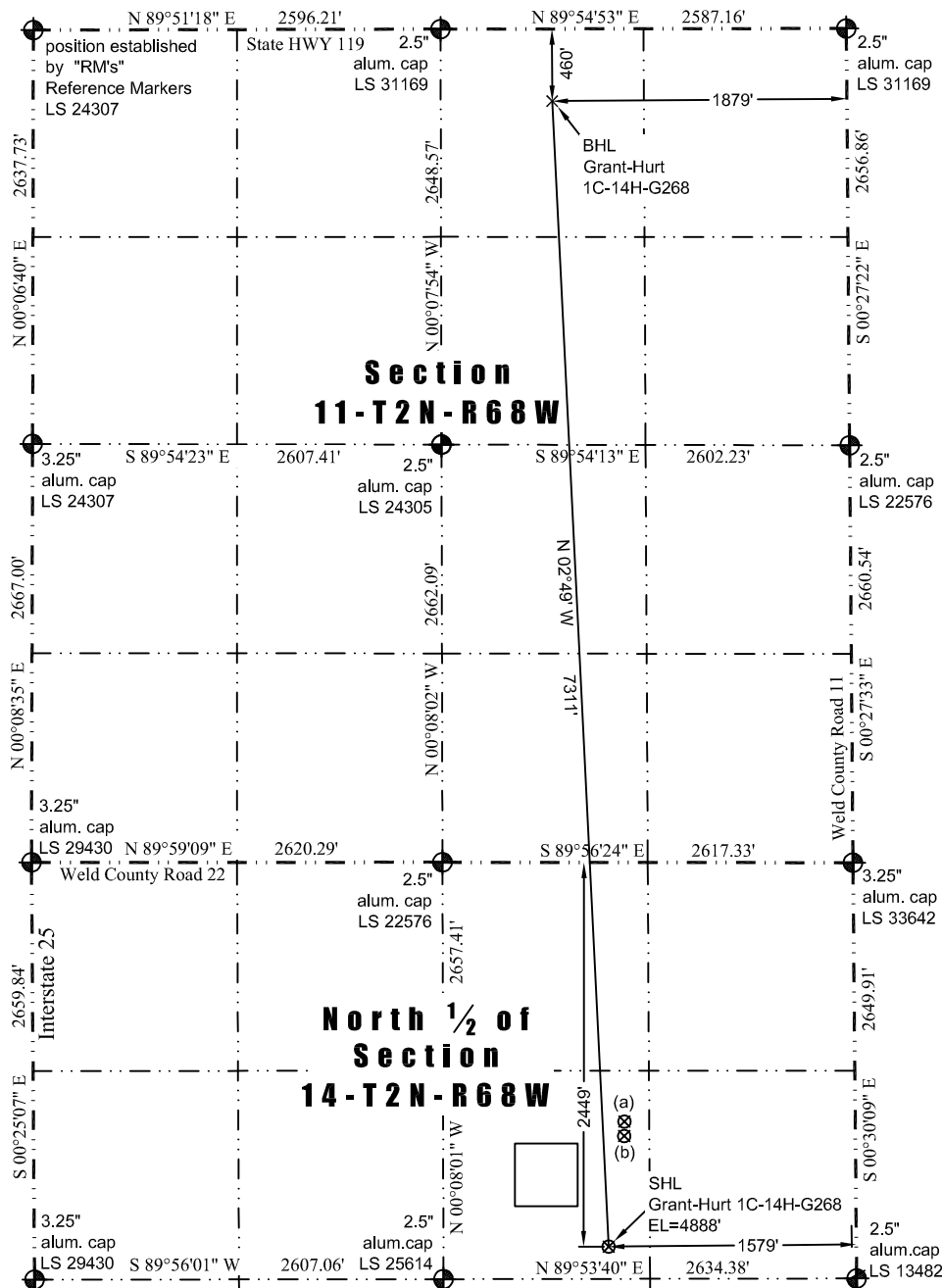


**JR Land Surveying, LLC**

8114 Northstar Drive  
Windsor, Colorado 80528  
P. 970-576-4641

**WELL LOCATION CERTIFICATE**

*THIS MAP DOES NOT REPRESENT A BOUNDARY SURVEY*



(a) Existing Well Data:  
Stanley Olsen #1  
Latitude: N 40.14147°  
Longitude: W 104.96629°  
FNL: 1651'  
FEL: 1471'  
ELEV: 4884'  
PDOP: 1.7

(b) Existing Well Data:  
Stanley Olsen #2  
Latitude: N 40.14122°  
Longitude: W 104.96629°  
FNL: 1744'  
FEL: 1474'  
ELEV: 4883'  
PDOP: 1.7

Nearest:  
Building: 1,354' east  
Above Ground Utility: 1,563' southeast  
Public Road: 1,563' east  
Railroad: 19,347' northwest  
Property Line: 205' south  
Well Window: SHL is 325' outside  
Existing Well: Stanley Olsen #2,  
712' northeast

In accordance with a request from Jay Knutson of EnCana Oil & Gas (USA) Inc., JR Land Surveying, LLC has determined the location of the **Grant-Hurt 1C-14H-G268** well site to be SHL: 2449' FNL and 1579' FEL, (BHL: 460' FNL and 1879' FEL), as measured at ninety (90) degrees from the section lines of Sections 11 and 14, Township 2 North, Range 68 West of the 6th Principal Meridian, Weld County Colorado.

**Proposed Surface Hole Data:**

Latitude: N 40.13928° (BHL: 40.15933°)  
Longitude: W 104.96666° (BHL: 104.96779°)  
PDOP: 1.3

**Notes:**

- 1) Bearings and distances based on NAD 83 Colorado North State Plane Coordinate, using RTK GPS observations taken 7/1/13 by operator John Rice.
- 2) Conversion factor to ground (1.000285153).
- 3) Elevations based on NAVD 88 GPS heights and Geoid 2003 corrections.
- 4) See Location Drawing for visible improvements within 500 feet of Pad Site.
- 5) The surface use is a cultivated field.

**NOTICE:** According to Colorado law you must commence any legal action based upon any defect in this W.L.C. within three years after you first discover such defect. In no event may any action based upon any defect in this W.L.C. be commenced more than ten years from this said date of the certification shown hereon.

I hereby certify that this Well Location Certificate was prepared by me or under my direct supervision on 7/2/2013 for and on behalf of EnCana Oil & Gas (USA) Inc. That it is not a Land Survey Plat or an Improvement Survey Plat and that it is not to be relied upon for establishment of fences, buildings, or other future improvement lines.

John Robert McGhee LS#38210  
Well: Grant-Hurt 1C-14H-G268 WLC