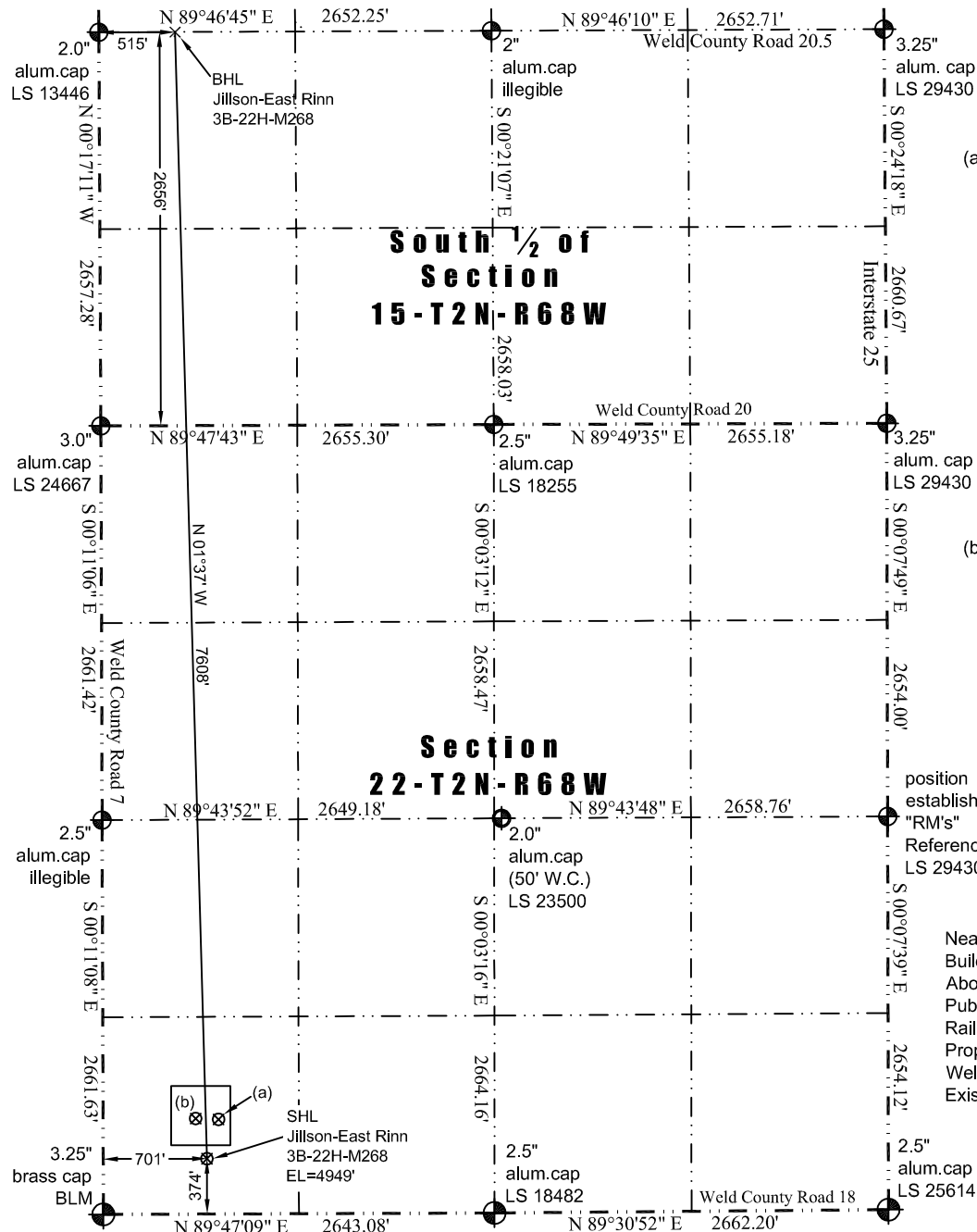


**JR Land Surveying, LLC**

8114 Northstar Drive  
Windsor, Colorado 80528  
P. 970-576-4641

**WELL LOCATION CERTIFICATE**

*THIS MAP DOES NOT REPRESENT A BOUNDARY SURVEY*



(a) Existing Well Data:  
Jillson 14-22  
Latitude: N 40.11862°  
Longitude: W 104.99613°  
FSL: 632'  
FWL: 741'  
ELEV: 4950'  
PDOP: 2.0

(b) Existing Well Data:  
Jillson #3  
Latitude: N 40.11863°  
Longitude: W 104.99644°  
FSL: 636'  
FWL: 655'  
ELEV: 4951'  
PDOP: 2.0

position established by "RM's"  
Reference Markers  
LS 29430

**Nearest:**  
Building: 989' southwest  
Above Ground Utility: 347' south  
Public Road: 361' south  
Railroad: 19,891' southwest  
Property Line: 374' south  
Well Window: SHL is 92' outside  
Existing Well: Jillson 14-22, 262' northeast

In accordance with a request from Jay Knutson of EnCana Oil & Gas (USA) Inc., JR Land Surveying, LLC has determined the location of the **Jillson-East Rinn 3B-22H-M268** well site to be SHL: 374' FSL and 701' FWL, (BHL: 2656' FSL and 515' FWL), as measured at ninety (90) degrees from the section lines of Sections 15 and 22, Township 2 North, Range 68 West of the 6th Principal Meridian, Weld County Colorado.

**Proposed Surface Hole Data:**

Latitude: N 40.11791° (BHL: 40.13879°)  
Longitude: W 104.99628° (BHL: 104.99689°)  
PDOP: 1.9

**Notes:**

- 1) Bearings and distances based on NAD 83 Colorado North State Plane Coordinate, using RTK GPS observations taken 6/6/13 by operator John Rice.
- 2) Conversion factor to ground (1.000285153).
- 3) Elevations based on NAVD 88 GPS heights and Geoid 2003 corrections.
- 4) See Location Drawing for visible improvements within 500 feet of Pad Site.
- 5) The surface use is a cultivated field.

**NOTICE:** According to Colorado law you must commence any legal action based upon any defect in this W.L.C. within three years after you first discover such defect. In no event may any action based upon any defect in this W.L.C. be commenced more than ten years from this said date of the certification shown hereon.

I hereby certify that this Well Location Certificate was prepared by me or under my direct supervision on 6/19/2013 for and on behalf of EnCana Oil & Gas (USA) Inc. That it is not a Land Survey Plat or an Improvement Survey Plat and that it is not to be relied upon for establishment of fences, buildings, or other future improvement lines.

John Robert McGhee, LS#38219  
Well: Jillson-East Rinn 3B-22H-M268 WLC