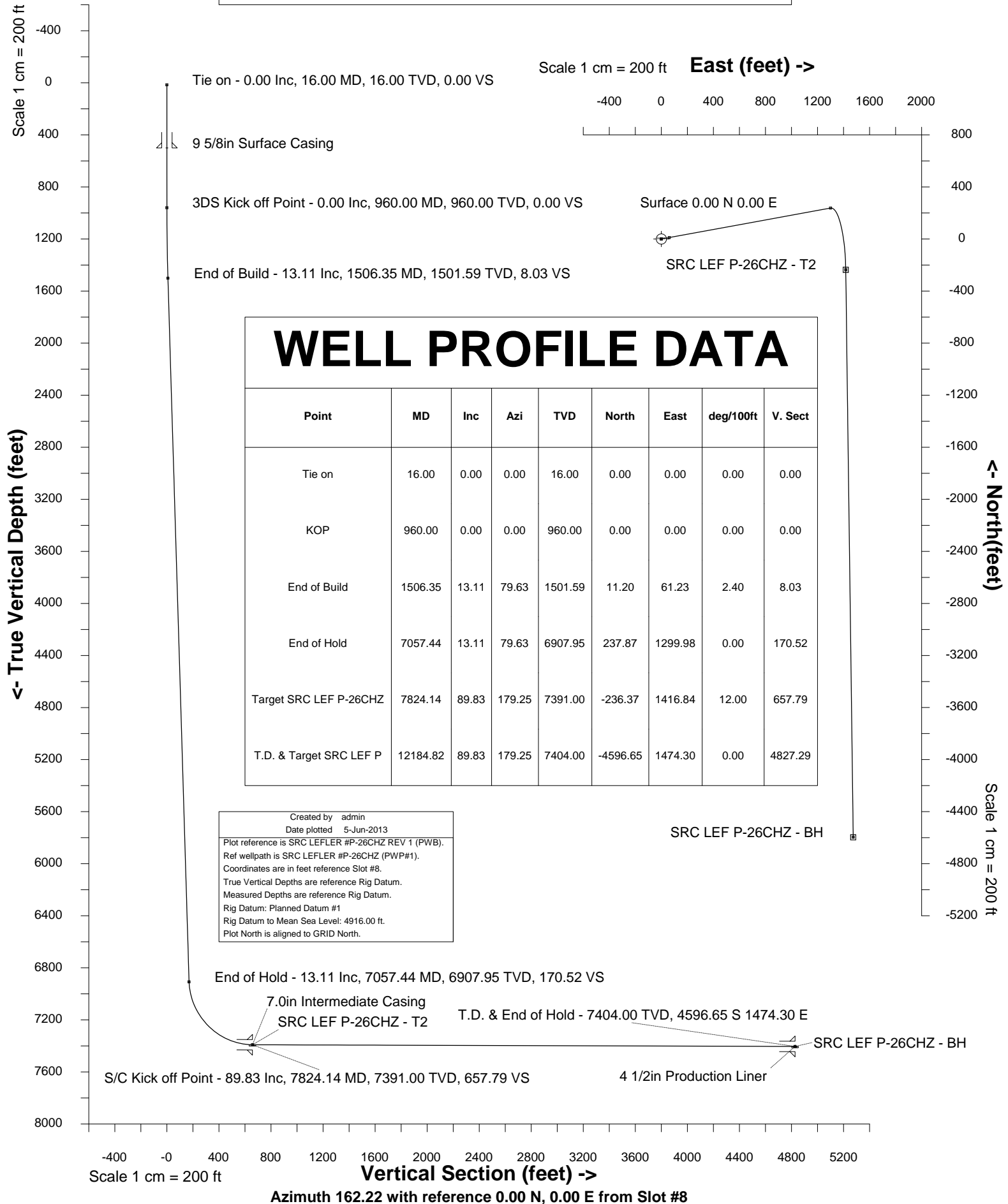


SYNERGY RESOURCES			
Location	Weld County, CO, USA(Imported)	Slot	Slot #8
Field	Wattenberg	Well	SRC LEFLER #P-26CHZ
Installation	SRC LEFFLER	Wellbore	SRC LEFLER #P-26CHZ REV 1 (PWB)

Slot	Slot #8
1	1
2	2
3	3
4	4
5	5
6	6
7	7
8	8
9	9
10	10
11	11
12	12
13	13
14	14
15	15
16	16
17	17
18	18
19	19
20	20
21	21
22	22
23	23
24	24
25	25
26	26
27	27
28	28
29	29
30	30
31	31
32	32
33	33
34	34
35	35
36	36
37	37
38	38
39	39
40	40
41	41
42	42
43	43
44	44
45	45
46	46
47	47
48	48
49	49
50	50
51	51
52	52
53	53
54	54
55	55
56	56
57	57
58	58
59	59
60	60
61	61
62	62
63	63
64	64
65	65
66	66
67	67
68	68
69	69
70	70
71	71
72	72
73	73
74	74
75	75
76	76
77	77
78	78
79	79
80	80
81	81
82	82
83	83
84	84
85	85
86	86
87	87
88	88
89	89
90	90
91	91
92	92
93	93
94	94
95	95
96	96
97	97
98	98
99	99
100	100

Well SRC LEFLER #P-26CHZ

**Wellbore SRC LEFLER #P-26CHZ REV 1 (PWB)**



SYSDRILL  
Well Design Combined Report  
Wellbore: SRC LEFLER #P-26CHZ REV 1 (PWB)

Wellhead Details							
Name	Northing	Easting	Latitude	Longitude	North	East	Elevation Above Inst.
Slot #8	1445137.3290	3208298.5790	N40 33 10.3859	W104 45 1.4333	3.74N	157.42E	-0.00

Declination			
Date	Source	Time	
28-Mar-2013	IGRF Model [1900.0-2015.0]		09:50

Site Details				
Name	Northing	Easting	Coord System Name	North Alignment
SRC LEFFLER	1445133.5911	3208141.1650	CO83-NF on NORTH AMERICAN DATUM 1983 datum	Grid

Summary Wellpath									
MD[ft]	Inc[deg]	Azi[deg]	TVD[ft]	North[ft]	East[ft]	Dogleg [deg/100ft]	Vertical Section[ft]	Northing	Easting
16.00	0.00	0.000	16.00	0.00N	0.00E		0.00	1445137.33	3208298.58
960.00	0.00	0.000	960.00	0.00N	0.00E	==>	0.00	1445137.33	3208298.58
1506.35	13.11	79.630	1501.59	11.20N	61.23E	2.40	8.03	1445148.53	3208359.80
7057.44	13.11	79.630	6907.95	237.87N	1299.98E	==>	170.52	1445375.19	3209598.52
7824.14	89.83	179.250	7391.00	236.37S	1416.84E	12.00	657.79	1444900.97	3209715.38
12184.82	89.83	179.250	7404.00	4596.65S	1474.30E	==>	4827.29	1440540.83	3209772.83

Interpolated Wellpath									
MD[ft]	Inc[deg]	Azi[deg]	TVD[ft]	North[ft]	East[ft]	Dogleg [deg/100ft]	Vertical Section[ft]	Northing	Easting
0.00	0.00	0.000	0.00	0.00N	0.00E		0.00	1445137.33	3208298.58
16.00	0.00	0.000	16.00	0.00N	0.00E	==>	0.00	1445137.33	3208298.58
100.00	0.00	0.000	100.00	0.00N	0.00E	==>	0.00	1445137.33	3208298.58
200.00	0.00	0.000	200.00	0.00N	0.00E	==>	0.00	1445137.33	3208298.58
300.00	0.00	0.000	300.00	0.00N	0.00E	==>	0.00	1445137.33	3208298.58
400.00	0.00	0.000	400.00	0.00N	0.00E	==>	0.00	1445137.33	3208298.58
500.00	0.00	0.000	500.00	0.00N	0.00E	==>	0.00	1445137.33	3208298.58
600.00	0.00	0.000	600.00	0.00N	0.00E	==>	0.00	1445137.33	3208298.58
700.00	0.00	0.000	700.00	0.00N	0.00E	==>	0.00	1445137.33	3208298.58
800.00	0.00	0.000	800.00	0.00N	0.00E	==>	0.00	1445137.33	3208298.58
900.00	0.00	0.000	900.00	0.00N	0.00E	==>	0.00	1445137.33	3208298.58
944.00	0.00	0.000	944.00	0.00N	0.00E	==>	0.00	1445137.33	3208298.58
960.00	0.00	0.000	960.00	0.00N	0.00E	==>	0.00	1445137.33	3208298.58
1044.00	2.02	79.630	1043.98	0.27N	1.45E	2.40	0.19	1445137.59	3208300.03
1144.00	4.42	79.630	1143.82	1.28N	6.97E	2.40	0.91	1445138.60	3208305.55
1244.00	6.82	79.630	1243.33	3.04N	16.60E	2.40	2.18	1445140.37	3208315.18
1344.00	9.22	79.630	1342.35	5.55N	30.31E	2.40	3.98	1445142.88	3208328.89
1444.00	11.62	79.630	1440.69	8.80N	48.10E	2.40	6.31	1445146.13	3208346.67
1500.00	12.96	79.630	1495.41	10.95N	59.82E	2.40	7.85	1445148.27	3208358.40
1506.35	13.11	79.630	1501.59	11.20N	61.23E	2.40	8.03	1445148.53	3208359.80
1600.00	13.11	79.630	1592.80	15.03N	82.13E	==>	10.77	1445152.36	3208380.70
1700.00	13.11	79.630	1690.19	19.11N	104.44E	==>	13.70	1445156.44	3208403.02
1800.00	13.11	79.630	1787.59	23.19N	126.76E	==>	16.63	1445160.52	3208425.33
1900.00	13.11	79.630	1884.98	27.28N	149.07E	==>	19.55	1445164.61	3208447.65
2000.00	13.11	79.630	1982.37	31.36N	171.39E	==>	22.48	1445168.69	3208469.96
2100.00	13.11	79.630	2079.77	35.44N	193.70E	==>	25.41	1445172.77	3208492.28
2200.00	13.11	79.630	2177.16	39.53N	216.02E	==>	28.34	1445176.85	3208514.59
2300.00	13.11	79.630	2274.55	43.61N	238.34E	==>	31.26	1445180.94	3208536.91
2400.00	13.11	79.630	2371.94	47.69N	260.65E	==>	34.19	1445185.02	3208559.22
2500.00	13.11	79.630	2469.34	51.78N	282.97E	==>	37.12	1445189.10	3208581.54
2600.00	13.11	79.630	2566.73	55.86N	305.28E	==>	40.05	1445193.19	3208603.85
2700.00	13.11	79.630	2664.12	59.94N	327.60E	==>	42.97	1445197.27	3208626.17
2800.00	13.11	79.630	2761.51	64.03N	349.91E	==>	45.90	1445201.35	3208648.48
2900.00	13.11	79.630	2858.91	68.11N	372.23E	==>	48.83	1445205.44	3208670.80
3000.00	13.11	79.630	2956.30	72.19N	394.54E	==>	51.75	1445209.52	3208693.11
3100.00	13.11	79.630	3053.69	76.28N	416.86E	==>	54.68	1445213.60	3208715.43
3200.00	13.11	79.630	3151.09	80.36N	439.18E	==>	57.61	1445217.69	3208737.74
3300.00	13.11	79.630	3248.48	84.44N	461.49E	==>	60.54	1445221.77	3208760.06
3400.00	13.11	79.630	3345.87	88.53N	483.81E	==>	63.46	1445225.85	3208782.37
3500.00	13.11	79.630	3443.26	92.61N	506.12E	==>	66.39	1445229.94	3208804.69
3600.00	13.11	79.630	3540.66	96.69N	528.44E	==>	69.32	1445234.02	3208827.00
3700.00	13.11	79.630	3638.05	100.78N	550.75E	==>	72.24	1445238.10	3208849.32

All data is in Feet unless otherwise stated  
Coordinates are from Slot MD's are from Rig and TVD's are from Rig ( Planned Datum #1 4916.0ft above Mean Sea Level )  
Vertical Section is from 0.00N 0.00E on azimuth 162.220 degrees  
Bottom hole distance is 4827.29 Feet on azimuth 162.22 degrees from Wellhead  
Calculation method uses Minimum Curvature method  
Date Printed: 5-Jun-2013

SYSDRILL  
Well Design Combined Report  
Wellbore: SRC LEFLER #P-26CHZ REV 1 (PWB)

Interpolated Wellpath									
MD[ft]	Inc[deg]	Azi[deg]	TVD[ft]	North[ft]	East[ft]	Dogleg [deg/100ft]	Vertical Section[ft]	Northing	Easting
3800.00	13.11	79.630	3735.44	104.86N	573.07E	==>	75.17	1445242.18	3208871.63
3900.00	13.11	79.630	3832.83	108.94N	595.38E	==>	78.10	1445246.27	3208893.95
4000.00	13.11	79.630	3930.23	113.03N	617.70E	==>	81.03	1445250.35	3208916.26
4100.00	13.11	79.630	4027.62	117.11N	640.02E	==>	83.95	1445254.43	3208938.58
4200.00	13.11	79.630	4125.01	121.19N	662.33E	==>	86.88	1445258.52	3208960.89
4300.00	13.11	79.630	4222.41	125.27N	684.65E	==>	89.81	1445262.60	3208983.20
4400.00	13.11	79.630	4319.80	129.36N	706.96E	==>	92.73	1445266.68	3209005.52
4500.00	13.11	79.630	4417.19	133.44N	729.28E	==>	95.66	1445270.77	3209027.83
4600.00	13.11	79.630	4514.58	137.52N	751.59E	==>	98.59	1445274.85	3209050.15
4700.00	13.11	79.630	4611.98	141.61N	773.91E	==>	101.52	1445278.93	3209072.46
4800.00	13.11	79.630	4709.37	145.69N	796.23E	==>	104.44	1445283.02	3209094.78
4900.00	13.11	79.630	4806.76	149.77N	818.54E	==>	107.37	1445287.10	3209117.09
5000.00	13.11	79.630	4904.15	153.86N	840.86E	==>	110.30	1445291.18	3209139.41
5100.00	13.11	79.630	5001.55	157.94N	863.17E	==>	113.23	1445295.26	3209161.72
5200.00	13.11	79.630	5098.94	162.02N	885.49E	==>	116.15	1445299.35	3209184.04
5300.00	13.11	79.630	5196.33	166.11N	907.80E	==>	119.08	1445303.43	3209206.35
5400.00	13.11	79.630	5293.73	170.19N	930.12E	==>	122.01	1445307.51	3209228.67
5500.00	13.11	79.630	5391.12	174.27N	952.43E	==>	124.93	1445311.60	3209250.98
5600.00	13.11	79.630	5488.51	178.36N	974.75E	==>	127.86	1445315.68	3209273.30
5700.00	13.11	79.630	5585.90	182.44N	997.07E	==>	130.79	1445319.76	3209295.61
5800.00	13.11	79.630	5683.30	186.52N	1019.38E	==>	133.72	1445323.85	3209317.93
5900.00	13.11	79.630	5780.69	190.61N	1041.70E	==>	136.64	1445327.93	3209340.24
6000.00	13.11	79.630	5878.08	194.69N	1064.01E	==>	139.57	1445332.01	3209362.56
6100.00	13.11	79.630	5975.47	198.77N	1086.33E	==>	142.50	1445336.10	3209384.87
6200.00	13.11	79.630	6072.87	202.86N	1108.64E	==>	145.42	1445340.18	3209407.19
6300.00	13.11	79.630	6170.26	206.94N	1130.96E	==>	148.35	1445344.26	3209429.50
6400.00	13.11	79.630	6267.65	211.02N	1153.27E	==>	151.28	1445348.35	3209451.82
6500.00	13.11	79.630	6365.05	215.11N	1175.59E	==>	154.21	1445352.43	3209474.13
6600.00	13.11	79.630	6462.44	219.19N	1197.91E	==>	157.13	1445356.51	3209496.45
6700.00	13.11	79.630	6559.83	223.27N	1220.22E	==>	160.06	1445360.59	3209518.76
6800.00	13.11	79.630	6657.22	227.36N	1242.54E	==>	162.99	1445364.68	3209541.08
6900.00	13.11	79.630	6754.62	231.44N	1264.85E	==>	165.92	1445368.76	3209563.39
7000.00	13.11	79.630	6852.01	235.52N	1287.17E	==>	168.84	1445372.84	3209585.71
7057.44	13.11	79.630	6907.95	237.87N	1299.98E	==>	170.52	1445375.19	3209598.52
7100.00	13.25	102.160	6949.42	237.71N	1309.51E	12.00	173.58	1445375.03	3209608.05
7200.00	19.65	139.270	7045.52	222.50N	1331.77E	12.00	194.87	1445359.82	3209630.31
7300.00	29.66	155.500	7136.39	187.11N	1353.08E	12.00	235.08	1445324.43	3209651.62
7400.00	40.69	163.800	7218.05	133.09N	1372.51E	12.00	292.45	1445270.41	3209671.05
7500.00	52.10	168.990	7286.93	62.80N	1389.21E	12.00	364.48	1445200.12	3209687.74
7600.00	63.67	172.760	7340.01	20.69S	1402.44E	12.00	448.02	1445116.64	3209700.98
7700.00	75.32	175.840	7374.99	113.72S	1411.64E	12.00	539.42	1445023.61	3209710.17
7800.00	87.01	178.600	7390.33	212.24S	1416.39E	12.00	634.68	1444925.09	3209714.92
7824.14	89.83	179.250	7391.00	236.37S	1416.84E	12.00	657.79	1444900.97	3209715.38
7900.00	89.83	179.250	7391.23	312.22S	1417.84E	==>	730.32	1444825.12	3209716.38
8000.00	89.83	179.250	7391.52	412.21S	1419.16E	==>	825.94	1444725.13	3209717.69
8100.00	89.83	179.250	7391.82	512.20S	1420.48E	==>	921.55	1444625.14	3209719.01
8200.00	89.83	179.250	7392.12	612.19S	1421.80E	==>	1017.17	1444525.16	3209720.33
8300.00	89.83	179.250	7392.42	712.18S	1423.11E	==>	1112.79	1444425.17	3209721.65
8400.00	89.83	179.250	7392.72	812.17S	1424.43E	==>	1208.40	1444325.18	3209722.96
8500.00	89.83	179.250	7393.01	912.16S	1425.75E	==>	1304.02	1444225.19	3209724.28
8600.00	89.83	179.250	7393.31	1012.15S	1427.07E	==>	1399.63	1444125.21	3209725.60
8700.00	89.83	179.250	7393.61	1112.15S	1428.38E	==>	1495.25	1444025.22	3209726.92
8800.00	89.83	179.250	7393.91	1212.14S	1429.70E	==>	1590.87	1443925.23	3209728.23
8900.00	89.83	179.250	7394.21	1312.13S	1431.02E	==>	1686.48	1443825.24	3209729.55
9000.00	89.83	179.250	7394.51	1412.12S	1432.34E	==>	1782.10	1443725.25	3209730.87
9100.00	89.83	179.250	7394.80	1512.11S	1433.65E	==>	1877.71	1443625.27	3209732.19
9200.00	89.83	179.250	7395.10	1612.10S	1434.97E	==>	1973.33	1443525.28	3209733.50
9300.00	89.83	179.250	7395.40	1712.09S	1436.29E	==>	2068.94	1443425.29	3209734.82
9400.00	89.83	179.250	7395.70	1812.08S	1437.61E	==>	2164.56	1443325.30	3209736.14
9500.00	89.83	179.250	7396.00	1912.07S	1438.92E	==>	2260.18	1443225.32	3209737.46
9600.00	89.83	179.250	7396.29	2012.06S	1440.24E	==>	2355.79	1443125.33	3209738.77
9700.00	89.83	179.250	7396.59	2112.05S	1441.56E	==>	2451.41	1443025.34	3209740.09
9800.00	89.83	179.250	7396.89	2212.05S	1442.88E	==>	2547.02	1442925.35	3209741.41
9900.00	89.83	179.250	7397.19	2312.04S	1444.19E	==>	2642.64	1442825.37	3209742.73
10000.00	89.83	179.250	7397.49	2412.03S	1445.51E	==>	2738.26	1442725.38	3209744.04
10100.00	89.83	179.250	7397.78	2512.02S	1446.83E	==>	2833.87	1442625.39	3209745.36

All data is in Feet unless otherwise stated  
Coordinates are from Slot MD's are from Rig and TVD's are from Rig ( Planned Datum #1 4916.0ft above Mean Sea Level )  
Vertical Section is from 0.00N 0.00E on azimuth 162.220 degrees  
Bottom hole distance is 4827.29 Feet on azimuth 162.22 degrees from Wellhead  
Calculation method uses Minimum Curvature method  
Date Printed: 5-Jun-2013

SYSDRILL  
Well Design Combined Report  
Wellbore: SRC LEFLER #P-26CHZ REV 1 (PWB)

Interpolated Wellpath									
MD[ft]	Inc[deg]	Azi[deg]	TVD[ft]	North[ft]	East[ft]	Dogleg [deg/100ft]	Vertical Section[ft]	Northing	Easting
10200.00	89.83	179.250	7398.08	2612.01S	1448.15E	==>	2929.49	1442525.40	3209746.68
10300.00	89.83	179.250	7398.38	2712.00S	1449.46E	==>	3025.10	1442425.41	3209748.00
10400.00	89.83	179.250	7398.68	2811.99S	1450.78E	==>	3120.72	1442325.43	3209749.31
10500.00	89.83	179.250	7398.98	2911.98S	1452.10E	==>	3216.33	1442225.44	3209750.63
10600.00	89.83	179.250	7399.28	3011.97S	1453.42E	==>	3311.95	1442125.45	3209751.95
10700.00	89.83	179.250	7399.57	3111.96S	1454.73E	==>	3407.57	1442025.46	3209753.27
10800.00	89.83	179.250	7399.87	3211.95S	1456.05E	==>	3503.18	1441925.48	3209754.58
10900.00	89.83	179.250	7400.17	3311.94S	1457.37E	==>	3598.80	1441825.49	3209755.90
11000.00	89.83	179.250	7400.47	3411.94S	1458.69E	==>	3694.41	1441725.50	3209757.22
11100.00	89.83	179.250	7400.77	3511.93S	1460.00E	==>	3790.03	1441625.51	3209758.54
11200.00	89.83	179.250	7401.06	3611.92S	1461.32E	==>	3885.65	1441525.52	3209759.85
11300.00	89.83	179.250	7401.36	3711.91S	1462.64E	==>	3981.26	1441425.54	3209761.17
11400.00	89.83	179.250	7401.66	3811.90S	1463.96E	==>	4076.88	1441325.55	3209762.49
11500.00	89.83	179.250	7401.96	3911.89S	1465.27E	==>	4172.49	1441225.56	3209763.81
11600.00	89.83	179.250	7402.26	4011.88S	1466.59E	==>	4268.11	1441125.57	3209765.12
11700.00	89.83	179.250	7402.55	4111.87S	1467.91E	==>	4363.72	1441025.59	3209766.44
11800.00	89.83	179.250	7402.85	4211.86S	1469.23E	==>	4459.34	1440925.60	3209767.76
11900.00	89.83	179.250	7403.15	4311.85S	1470.54E	==>	4554.96	1440825.61	3209769.08
12000.00	89.83	179.250	7403.45	4411.84S	1471.86E	==>	4650.57	1440725.62	3209770.39
12100.00	89.83	179.250	7403.75	4511.84S	1473.18E	==>	4746.19	1440625.63	3209771.71
12184.82	89.83	179.250	7404.00	4596.65S	1474.30E	==>	4827.29	1440540.83	3209772.83

All data is in Feet unless otherwise stated  
Coordinates are from Slot MD's are from Rig and TVD's are from Rig ( Planned Datum #1 4916.0ft above Mean Sea Level )  
Vertical Section is from 0.00N 0.00E on azimuth 162.220 degrees  
Bottom hole distance is 4827.29 Feet on azimuth 162.22 degrees from Wellhead  
Calculation method uses Minimum Curvature method  
Date Printed: 5-Jun-2013

SYSDRILL  
Well Design Combined Report  
Wellbore: SRC LEFLER #P-26CHZ REV 1 (PWB)

Hole Sections								
Diameter [in]	Start MD[ft]	Start TVD[ft]	Start North[ft]	Start East[ft]	End MD[ft]	End TVD[ft]	End North[ft]	End East[ft]
12 1/4	16.00	16.00	0.00N	0.00E	500.00	500.00	0.00N	0.00E
8 3/4	500.00	500.00	0.00N	0.00E	7824.00	7391.00	236.23S	1416.84E
6 1/8	7824.00	7391.00	236.23S	1416.84E	12184.82	7404.00	4596.65S	1474.30E

Casings								
Name	Top MD[ft]	Top TVD[ft]	Top North[ft]	Top East[ft]	Shoe MD[ft]	Shoe TVD[ft]	Shoe North[ft]	Shoe East[ft]
9 5/8in Surface Casing	0.00				500.00	500.00	0.00N	0.00E
7.0in Intermediate Casing	0.00				7824.00	7391.00	236.23S	1416.84E
4 1/2in Production Liner	7057.00	6907.52	237.85N	1299.89E	12184.82	7404.00	4596.65S	1474.30E

Targets								
Name	North[ft]	East[ft]	TVD[ft]	Latitude	Longitude	Northing	Easting	Last Revised
SRC LEF	4596.65S	1474.30E	7404.00	N40 32 24.8427	W104 44 42.8417	1440540.83	3209772.83	14-May-2013
P-26CHZ - BH								
SRC LEF	236.37S	1416.84E	7391.00	N40 33 7.9316	W104 44 43.1052	1444900.97	3209715.38	14-May-2013
P-26CHZ - T2								

Survey Tool Program						
Reference	Survey Name	MD[ft]	TVD[ft]	Survey Tool	Error Model	
38379	Planned	12184.82	7404.00	WdW Rate Gyro	Standard	

Notes

SYSDRILL  
Closest Approach + Clearance Factor Summary Report  
Wellbore: SRC LEFLER #P-26CHZ REV 1 (PWB)

Ellipse separations are reported ONLY if BOTH wells have uncertainty data  
Only Depth and Magnetic Reference Field error terms are correlated across tie points  
Cutoff is calculated on CENTRE to CENTRE distance

Summary data uses Closest Approach clearance calculation for all minima  
Hole size/Casings ARE included  
Hole size/Casings are NOT subtracted from Centre-Centre distance  
Confidence limit of 95.00% / 2.80 SD.

Wellbore		
Name	Created	Last Revised
SRC LEFLER #P-26CHZ REV 1 (PWB)	5-Jun-2013	5-Jun-2013

Well		
Name	Government ID	Last Revised
SRC LEFLER #P-26CHZ		5-Jun-2013

Slot						
Name	Grid Northing	Grid Easting	Latitude	Longitude	North	East
Slot #8	1445137.3290	3208298.5790	N40 33 10.3859	W104 45 1.4333	3.74N	157.42E

Installation				
Name	Easting	Northing	Coord System Name	North Alignment
SRC LEFFLER	3208141.1650	1445133.5911	CO83-NF on NORTH AMERICAN DATUM 1983 datum	Grid

Field				
Name	Easting	Northing	Coord System Name	North Alignment
Wattenberg	3212690.1960	1438741.7551	CO83-NF on NORTH AMERICAN DATUM 1983 datum	Grid

Clearance Summary										
Offset WellName	Offset Wellbore	Offset Slot	Offset Structure	Separation [ft]	MD[ft]	Diverging From[ft]	Ellipse Separation [ft]	Ellipse MD[ft]	Clearance Factor	Clearance MD[ft]
SRC LEFFLER #24-26NHZ	SRC LEFFLER #24-26NHZ (PWB)	Slot #7	SRC LEFFLER	22.50	960.00	7903.27	20.32	967.44	5.98	12184.82
SRC LEFFLER P-26NHZ	SRC LEFFLER P-26NHZ REV 1 (PWB)	Slot #9	SRC LEFFLER	22.50	852.61	852.61	20.49	852.61	3.95	12184.82
SRC LEFFLER #B-26NBH Z	SRC LEFFLER #B-26NBHZ REV 1 (PWB)	Slot #6	SRC LEFFLER	44.99	960.00	7890.02	42.81	967.44	12.21	12184.82
SRC LEFFLER #B-26CHZ	SRC LEFFLER #B-26CHZ REV 1 (PWB)	Slot #5	SRC LEFFLER	67.48	960.00	12184.82	65.31	967.44	13.80	12184.82
MAGNUSO N #23L-421	MAGNUSO N #23L-421 (AWB)	MAGNUSO N #23L-421	SRC LEFFLER OFFSETS	69.23	5363.94	5363.94	26.82	5330.96	1.63	5314.56
SRC LEFFLER #B-26NAH Z	SRC LEFFLER #B-26NAHZ (PWB)	Slot #4	SRC LEFFLER	89.98	960.00	12184.82	87.80	967.44	18.01	12184.82
SRC LEFFLER #14-26NHZ	SRC LEFFLER #14-26NHZ (PWB)	Slot #3	SRC LEFFLER	112.47	960.00	960.00	110.30	967.44	23.19	12184.82
SRC LEFFLER #H-26CHZ	SRC LEFFLER #H-26CHZ REV 1 (PWB)	Slot #2	SRC LEFFLER	134.97	960.00	12184.82	132.79	967.44	27.59	12184.82
SRC LEFFLER #H-26NHZ	SRC LEFFLER #H-26NHZ (PWB)	Slot #1	SRC LEFFLER	157.46	852.61	12184.82	155.46	852.61	28.77	12184.82

All data is in Feet unless otherwise stated  
Coordinates are from Slot MD's are from Rig and TVD's are from Rig ( Planned Datum #1 4916.0ft above Mean Sea Level )  
Vertical Section is from 0.00N 0.00E on azimuth 162.220 degrees  
Date Printed: 5-Jun-2013

SYSDRILL  
Closest Approach + Clearance Factor Summary Report  
Wellbore: SRC LEFLER #P-26CHZ REV 1 (PWB)

Clearance Summary										
Offset WellName	Offset Wellbore	Offset Slot	Offset Structure	Separation [ft]	MD[ft]	Diverging From[ft]	Ellipse Separation [ft]	Ellipse MD[ft]	Clearance Factor	Clearance MD[ft]
SRC LEFFLER #23-26D	SRC LEFFLER #23-26D (AWB)	SRC LEFFLER #23-26D	SRC LEFFLER OFFSETS	517.32	10718.21	10718.21	460.81	10718.21	9.15	10727.94
MAGNUSO N #23L-201	MAGNUSON #23L-201 (AWB)	MAGNUSO N #23L-201	SRC LEFFLER OFFSETS	525.22	960.00	960.00	519.67	983.85	40.73	5478.60
MAGNUSO N #23I-421	MAGNUSON #23I-421 (AWB)	MAGNUSO N #23I-421	SRC LEFFLER OFFSETS	544.86	655.76	655.76	541.11	918.23	63.31	4658.39
SRC LEFFLER #24-26D	SRC LEFFLER #24-26D (AWB)	SRC LEFFLER #24-26D	SRC LEFFLER OFFSETS	551.57	11991.07	11991.07	480.89	11974.66	7.67	11892.64
MAGNUSO N #23I-221	MAGNUSON #23I-221 (AWB)	MAGNUSO N #23I-221	SRC LEFFLER OFFSETS	565.47	960.00	960.00	560.96	967.44	78.67	6889.36
TRACY #23M-203	TRACY #23M-203 (AWB)	TRACY #23M-203	SRC LEFFLER OFFSETS	581.63	7241.49	7241.49	533.77	7233.85	11.42	7116.00
LEFFLER #26Q-421	LEFFLER #26Q-421 (AWB)	LEFFLER #26Q-421	SRC LEFFLER OFFSETS	749.42	11712.19	11712.19	643.39	7854.16	6.07	7854.16
MAGNUSS ON #1-23	MAGNUSSO N #1-23 (AWB)	MAGNUSS ON #1-23	SRC LEFFLER OFFSETS	893.91	960.00	960.00	883.79	1000.25	53.56	4445.13
TRACY #31-23H	TRACY #31-23H (AWB)	TRACY #31-23H	SRC LEFFLER OFFSETS	1604.96	7360.89	7360.89	1486.14	7348.68	13.49	7315.87
SRC LEFFLER #13-26D	SRC LEFFLER #13-26D (AWB)	SRC LEFFLER #13-26D	SRC LEFFLER OFFSETS	1806.07	10739.37	10739.37	1751.02	10739.37	32.81	10727.94
SRC LEFFLER #14-26D	SRC LEFFLER #14-26D (AWB)	SRC LEFFLER #14-26D	SRC LEFFLER OFFSETS	1820.23	12002.31	12002.31	1751.16	12016.00	26.19	12155.11
SRC LEFLER #23-26DX	SRC LEFLER #23-26DX (AWB)	SRC LEFLER #23-26DX	SRC LEFFLER OFFSETS	3680.04	524.53	11228.69	3677.29	491.72	360.94	12184.82