

SECTION 19, T7S, R95W, 6th P.M.

BAT 41D-19-07-95

SHL

(SEE SHEET 1 FOR DETAILS)

CALCULATED CORNER POSITION
FROM REFERENCE MONUMENTS
SOUTH 1/4 COR. SEC. 18

BRASS CAP
LS #11643
SW COR. SEC. 18

S88°30'19"E
2579.42'

S88°30'28"E
1321.21'

S88°33'37"E
1321.30'

BRASS CAP
LS #11643
SE COR. SEC. 18

S07°33'30"E
1357.38'

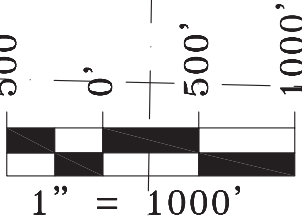
1075' FNL

BAT 41D-19-07-95
BHL

624' FEL

N00°54'15"E
2637.73'

NORTH



BRASS CAP LS #15710
WEST 1/4 COR. SEC. 19

1983 BLM
BRASS CAP
CENTER 1/4 CORNER S19

19

N88°42'14"W
2635.81'

BRASS CAP
NO MARKINGS
EAST 1/4 COR. SEC. 19

S01°35'12"W
2644.08'

N00°17'11"W
2769.36'

S87°18'11"E
2632.08'

S87°24'11"E
2689.50'

RECORD CORNER
POSITION PER
1987 BLM PLAT

RECORD CORNER
POSITION PER
1987 BLM PLAT

RECORD CORNER
POSITION PER
1987 BLM PLAT

NOTES:

1. GEODETIC POSITIONS ARE SHOWN IN DECIMAL DEGREES.
2. UNITS OF LINEAR MEASUREMENT: U.S. SURVEY FOOT
3. ELEVATIONS ARE BASED ON GPS OBSERVATIONS USING GEOID 03, NAVD88.
4. ALL SURFACE (SHL) AND BOTTOM (BHL) HOLE LOCATIONS ARE MEASURED AT 90° ANGLES FROM SECTION LINES.
5. BASIS OF BEARING: N00°52'49"E BETWEEN FOUND MONUMENTS AS SHOWN ON SHEET 1.
6. EXISTING GROUND ELEVATION: 5441'. PROPOSED PAD ELEVATION: 5441.2'.
7. GPS OPERATOR: KYLE TESKY OBSERVED AN AVERAGE PDOP OF ≤ 3.0 FOR ALL SURVEY MEASUREMENTS DEPICTED ON THIS AND SUBSEQUENT SHEETS. ALL GPS OBSERVATIONS ARE IN COMPLIANCE WITH COGCC RULE NO. 215
8. SURFACE USE: AGRICULTURAL LANDS
9. USGS QUAD MAP: PARACHUTE

SURVEYORS STATEMENT:

I, STEPHEN L. EHLERS, BEING A REGISTERED LAND SURVEYOR IN THE STATE OF COLORADO, DO HEREBY CERTIFY THAT THIS PLAT REPRESENTS A SURVEY PERFORMED BY ME OR UNDER MY DIRECT SUPERVISION SEPTEMBER 17, 2010 AND IS TRUE TO THE BEST OF MY KNOWLEDGE AND BELIEF.

20133

STEPHEN L. EHLERS
COLORADO LS 20133

DATE

16 JULY, 2013

WELL No.	SECTION LINES TIES		NAD 83		NAD 27	
BAT 41D-18-07-95	FOOTAGES	FOOTAGES	LATITUDE	LONGITUDE	LATITUDE	LONGITUDE
SURFACE HOLE (SHL)	266' FSL	824' FEL	39.431154°	-108.033246°	39.431176°	-108.032616°
BOTTOM HOLE (BHL)	1075' FNL	624' FEL	39.427476°	-108.032482°	39.427498°	-108.031852°



118 West Sixth Street, Suite 200
Glenwood Springs, CO 81601
970.945.1004 www.sgm-inc.com

Scale: 1" = 1000'

Sheet 1A of 1A

WLP

WELL LOCATION PLAT - URSA BAT 41D-19-07-95

BHL LOCATED IN NE1/4NE1/4 SECTION 19, T. 7 S., R. 95 W., 6TH P.M., GARFIELD COUNTY, CO

Job# 2013-413.001

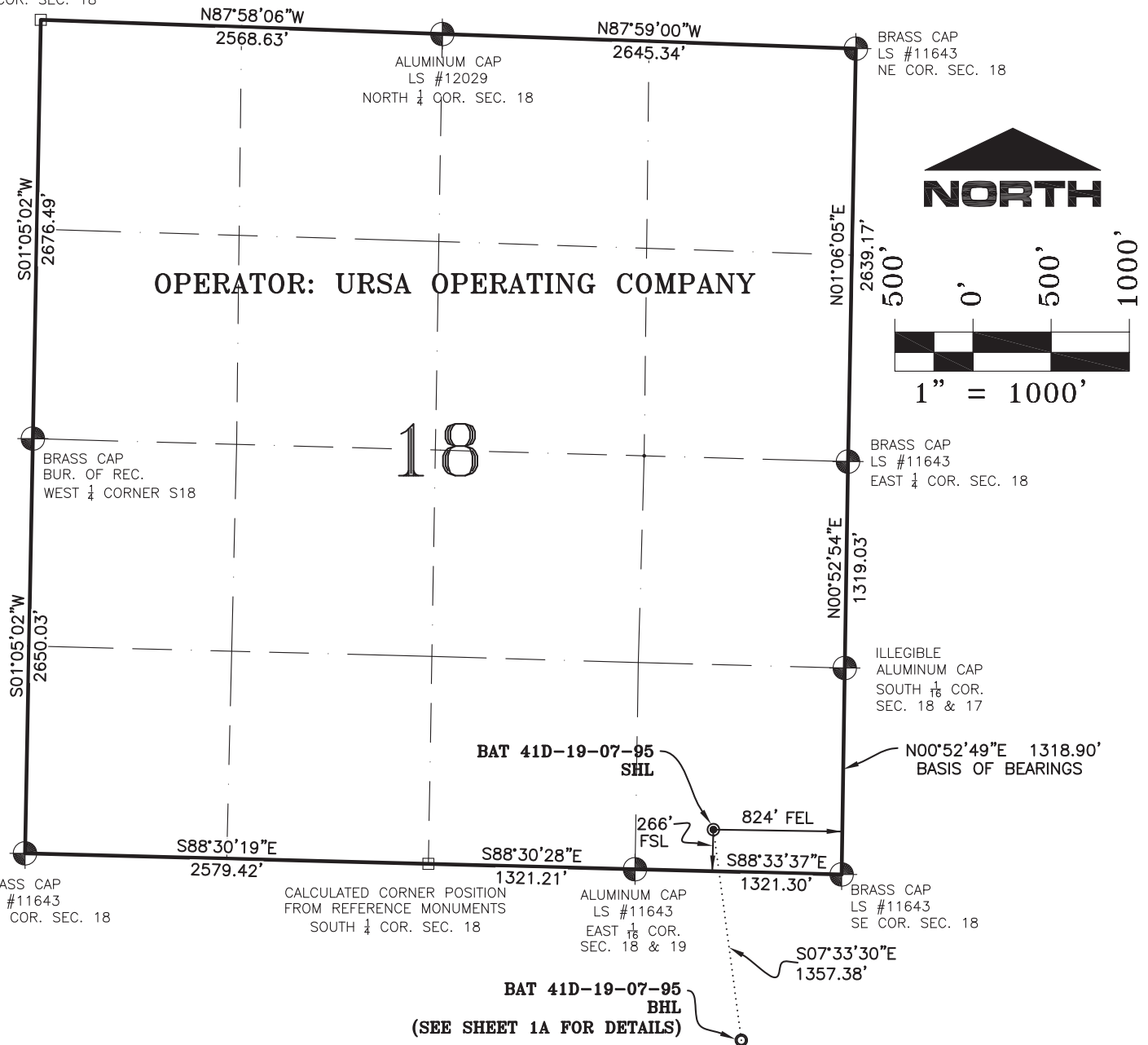
Date: 7.15.13

By: REB

File: MonRidUrsa

SECTION 18, T7S, R95W, 6th P.M.

CALCULATED POSITION
NW COR. SEC. 18



NOTES:

1. GEODETIC POSITIONS ARE SHOWN IN DECIMAL DEGREES.
2. UNITS OF LINEAR MEASUREMENT: U.S. SURVEY FOOT
3. ELEVATIONS ARE BASED ON GPS OBSERVATIONS USING GEOID 03, NAVD88.
4. ALL SURFACE (SHL) AND BOTTOM (BHL) HOLE LOCATIONS ARE MEASURED AT 90° ANGLES FROM SECTION LINES.
5. BASIS OF BEARING: N00°52'49\"E BETWEEN FOUND MONUMENTS AS SHOWN HEREON.
6. EXISTING GROUND ELEVATION: 5441'. PROPOSED PAD ELEVATION: 5441.2'.
7. GPS OPERATOR: KYLE TESKY OBSERVED AN AVERAGE PDOP OF ≤ 3.0 FOR ALL SURVEY MEASUREMENTS DEPICTED ON THIS AND SUBSEQUENT SHEETS. ALL GPS OBSERVATIONS ARE IN COMPLIANCE WITH COGCC RULE NO. 215
8. SURFACE USE: AGRICULTURAL LANDS
9. USGS QUAD MAP: PARACHUTE

SURVEYORS STATEMENT:

I, STEPHEN L. EHLERS, BEING A REGISTERED LAND SURVEYOR IN THE STATE OF COLORADO, DO HEREBY CERTIFY THAT THIS PLAT REPRESENTS A SURVEY PERFORMED BY ME OR UNDER MY DIRECT SUPERVISION SEPTEMBER 17, 2010 AND IS TRUE TO THE BEST OF MY KNOWLEDGE AND BELIEF.

Stephen L. Ehlers
20133

STEPHEN L. EHLERS
COLORADO LS 20133

16 JULY, 2013

DATE

WELL No.	SECTION LINES TIES		NAD 83		NAD 27	
BAT 41D-18-07-95	FOOTAGES	FOOTAGES	LATITUDE	LONGITUDE	LATITUDE	LONGITUDE
SURFACE HOLE (SHL)	266' FSL	824' FEL	39.431154°	-108.033246°	39.431176°	-108.032616°
BOTTOM HOLE (BHL)	1075' FNL	624' FEL	39.427476°	-108.032482°	39.427498°	-108.031852°



118 West Sixth Street, Suite 200
Glenwood Springs, CO 81601
970.945.1004 www.sgm-inc.com

Scale: 1" = 1000'

Sheet 1 of 1A

WLP

WELL LOCATION PLAT - URSA BAT 41D-19-07-95

SHL LOCATED IN SE1/4SE1/4 SECTION 18, T. 7 S., R 95 W., 6TH P.M., GARFIELD COUNTY, CO

Job# 2013-413.001

Date: 7.15.13

By: REB

File: MonRidUrsa