

CALCULATED POSITION  
NW COR. SEC. 18



1. GEODETIC POSITIONS ARE SHOWN IN DECIMAL DEGREES.
2. UNITS OF LINEAR MEASUREMENT: U.S. SURVEY FOOT
3. ELEVATIONS ARE BASED ON GPS OBSERVATIONS USING GEOID 03, NAVD88.
4. ALL SURFACE (SHL) AND BOTTOM (BHL) HOLE LOCATIONS ARE MEASURED AT 90° ANGLES FROM SECTION LINES.
5. BASIS OF BEARING: N00°52'49"E BETWEEN FOUND MONUMENTS AS SHOWN HEREON.
6. EXISTING GROUND ELEVATION: 5441'. PROPOSED PAD ELEVATION: 5441.2'.
7. GPS OPERATOR: KYLE TESKY OBSERVED AN AVERAGE PDOP OF  $\leq 3.0$  FOR ALL SURVEY MEASUREMENTS DEPICTED ON THIS AND SUBSEQUENT SHEETS. ALL GPS OBSERVATIONS ARE IN COMPLIANCE WITH COGCC RULE NO. 215
8. SURFACE USE: AGRICULTURAL LANDS
9. USGS QUAD MAP: PARACHUTE

**SURVEYORS STATEMENT:**

I, STEPHEN L. EHLERS, BEING A REGISTERED LAND SURVEYOR IN THE STATE OF COLORADO, DO HEREBY CERTIFY THAT THIS PLAT REPRESENTS A SURVEY PERFORMED BY ME OR UNDER MY DIRECT SUPERVISION, SEPTEMBER 17, 2010 AND IS TRUE TO THE BEST OF MY KNOWLEDGE AND BELIEF.

Stephen L. Allen

STEPHEN L. EHLERS  
COLORADO LS 2013

20133

16 JULY, 2013

DATE \_\_\_\_\_

WELL No.	SECTION LINES TIES		NAD 83		NAD 27	
BAT 13C-17-07-95	FOOTAGES	FOOTAGES	LATITUDE	LONGITUDE	LATITUDE	LONGITUDE
SURFACE HOLE (SHL)	328' FSL	825' FEL	39.431326°	-108.033252°	39.431347°	-108.032622°
BOTTOM HOLE (BHL)	1671' FSL	669' FWL	39.435027°	-108.028022°	39.435049°	-108.027393°



118 West Sixth Street, Suite 200  
Glenwood Springs, CO 81601  
970.945.1004 [www.sqm-inc.com](http://www.sqm-inc.com)

Scale: 1" = 1000

Sheet 1 of 1A

WLP

WELL LOCATION PLAT - URSA BAT 13C-17-07-95

SHL LOCATED IN SE1/4SE1/4 SECTION 18, T. 7 S., R 95 W., 6TH P.M., GARFIELD COUNTY, CO

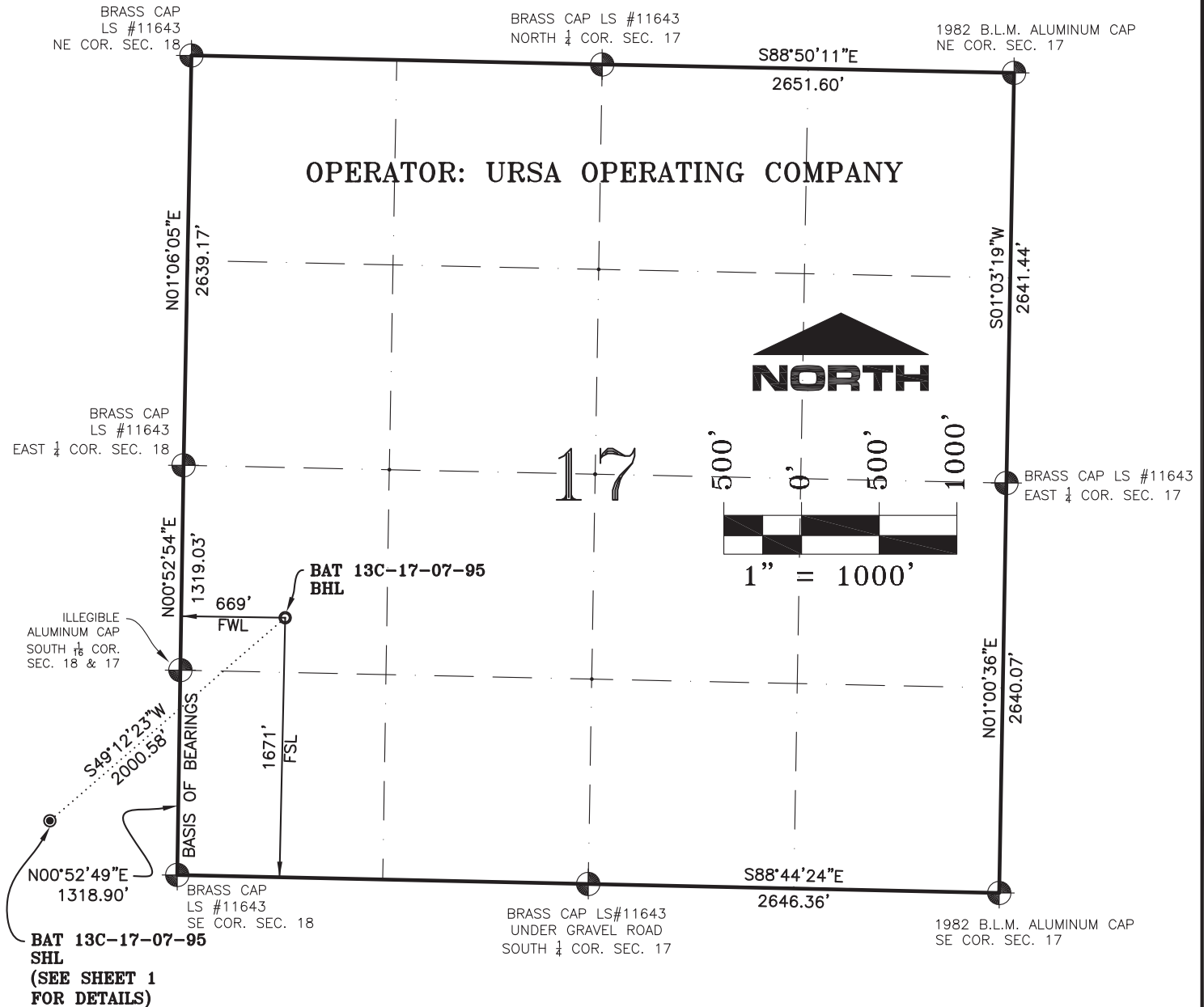
Job# 2013-413.001

Date: 7.15.13

By: *REB*

**File:** MonRidUrsa

# SECTION 17, T7S, R95W, 6th P.M.



## NOTES:

1. GEODETIC POSITIONS ARE SHOWN IN DECIMAL DEGREES.
2. UNITS OF LINEAR MEASUREMENT: U.S. SURVEY FOOT
3. ELEVATIONS ARE BASED ON GPS OBSERVATIONS USING GEOID 03, NAVD88.
4. ALL SURFACE (SHL) AND BOTTOM (BHL) HOLE LOCATIONS ARE MEASURED AT 90° ANGLES FROM SECTION LINES.
5. BASIS OF BEARING: N00°52'49"E BETWEEN FOUND MONUMENTS AS SHOWN HEREON.
6. EXISTING GROUND ELEVATION: 5441'. PROPOSED PAD ELEVATION: 5441.2'.
7. GPS OPERATOR: KYLE TESKY OBSERVED AN AVERAGE PDOP OF  $\leq 3.0$  FOR ALL SURVEY MEASUREMENTS DEPICTED ON THIS AND SUBSEQUENT SHEETS. ALL GPS OBSERVATIONS ARE IN COMPLIANCE WITH COGCC RULE NO. 215
8. SURFACE USE: AGRICULTURAL LANDS
9. USGS QUAD MAP: PARACHUTE

## SURVEYORS STATEMENT:

I, STEPHEN L. EHLERS, BEING A REGISTERED LAND SURVEYOR IN THE STATE OF COLORADO, DO HEREBY CERTIFY THAT THIS PLAT REPRESENTS A SURVEY PERFORMED BY ME OR UNDER MY DIRECT SUPERVISION SEPTEMBER 17, 2010 AND IS TRUE TO THE BEST OF MY KNOWLEDGE AND BELIEF.

*Stephen L. Ehlers*  
20133

16 JULY, 2013

STEPHEN L. EHLERS  
COLORADO LS 20133

DATE

WELL No.	SECTION LINES TIES		NAD 83		NAD 27	
BAT 13C-17-07-95	FOOTAGES	FOOTAGES	LATITUDE	LONGITUDE	LATITUDE	LONGITUDE
SURFACE HOLE (SHL)	328' FSL	825' FEL	39.431326°	-108.033252°	39.431347°	-108.032622°
BOTTOM HOLE (BHL)	1671' FSL	669' FWL	39.435027°	-108.028022°	39.435049°	-108.027393°



118 West Sixth Street, Suite 200  
Glenwood Springs, CO 81601  
970.945.1004 www.sgm-inc.com

Scale: 1" = 1000'

Sheet 1A of 1A

WLP

WELL LOCATION PLAT - URSA BAT 13C-17-07-95

BHL LOCATED IN NW1/4SW1/4 SECTION 17, T. 7 S., R 95 W., 6TH P.M., GARFIELD COUNTY, CO

Job# 2013-413.001

Date: 7.15.13

By: REB

File: MonRidUrsa