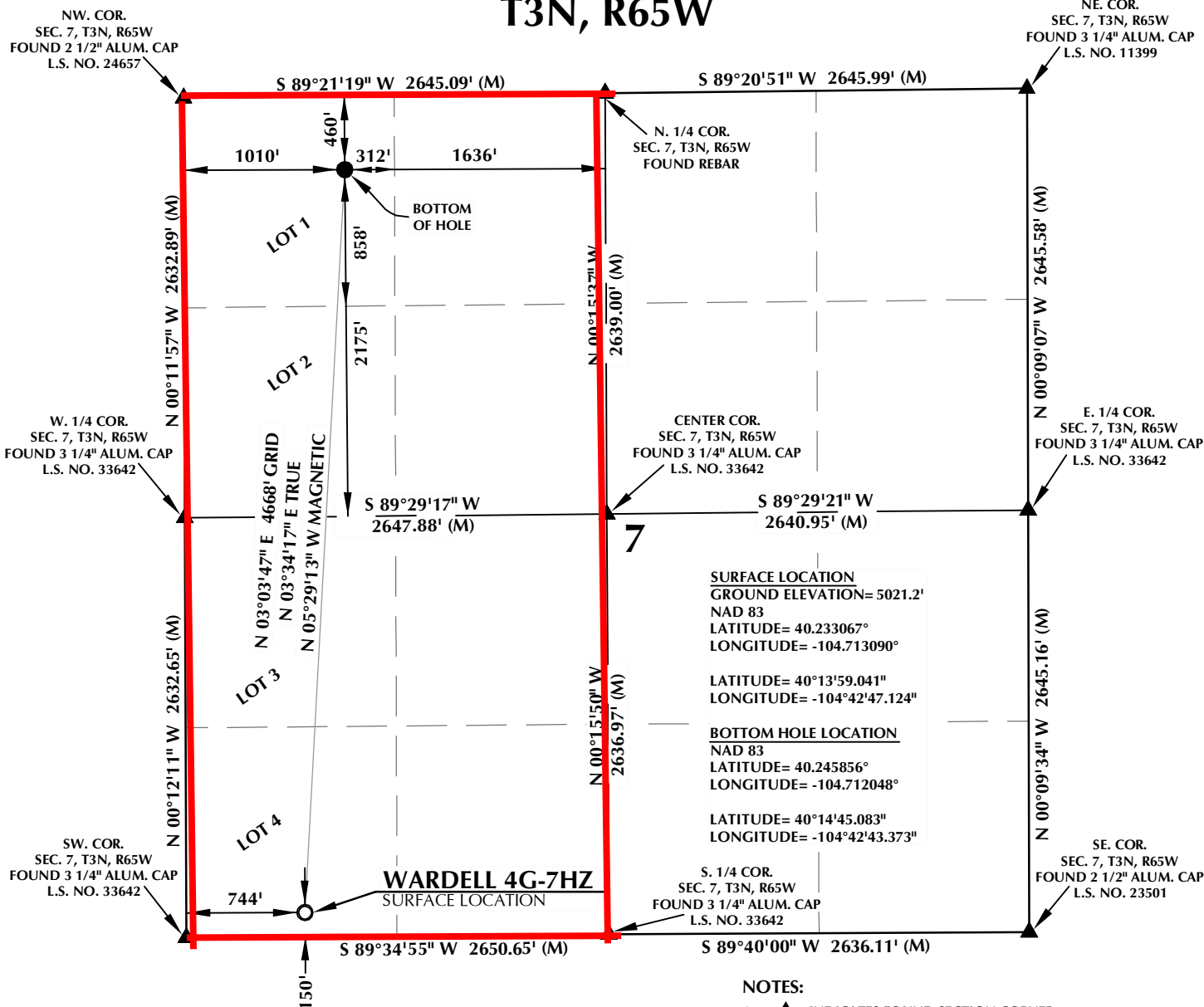


# SPACING MAP

## T3N, R65W

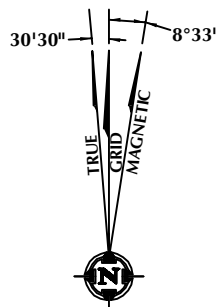


### CERTIFICATE OF SURVEYOR:

THIS IS TO CERTIFY THAT THE ABOVE PLAT WAS PREPARED FROM FIELD NOTES OF ACTUAL SURVEY MADE BY ME OR UNDER MY SUPERVISION AND THAT THE SAME ARE TRUE AND CORRECT TO THE BEST OF MY KNOWLEDGE AND BELIEF. THIS CERTIFICATE DOES NOT REPRESENT A LAND SURVEY PLAT OR IMPROVEMENT SURVEY PLAT AS DEFINED BY C.S. 38-51-102 AND CANNOT BE RELIED UPON TO DETERMINE OWNERSHIP.

*Benjamin J. Reenders*  
 BENJAMIN J. REENDERS  
 PROFESSIONAL LAND SURVEYOR  
 COLORADO REGISTRATION NUMBER 4836  
 6/28/13

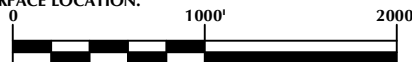
NOTICE:  
 ACCORDING TO COLORADO STATE LAW YOU MUST COMMENCE ANY LEGAL ACTION BASED UPON ANY DEFECT IN THIS SURVEY WITHIN THREE YEARS AFTER YOU FIRST DISCOVER SUCH DEFECT. IN NO EVENT MAY ANY ACTION BASED UPON ANY DEFECT IN THIS SURVEY BE COMMENCED MORE THAN TEN YEARS FROM THE DATE ON THE CERTIFICATION SHOWN HEREON.



NOTE:  
 MAGNETIC NORTH IS CURRENT AS OF 6/14/2013.  
 MAGNETIC NORTH CHANGES WEST 0°08' PER YEAR.

### NOTES:

- ▲ INDICATES FOUND SECTION CORNER
- INDICATES CALCULATED CORNER
- ELEVATION BASED ON NAVD88 (GEOID09)
- BASIS OF BEARING DERIVED FROM COLORADO COORDINATE SYSTEM 1983 NORTH ZONE UNLESS OTHERWISE NOTED.
- ALL MEASURED DISTANCES ARE GRID.  
COMBINED SCALE FACTOR: .99972203
- OPERATOR: ROB WILSON / PDOP = 2.0
- SURFACE USE OF LOCATION IS RANGELAND.
- SEE ADDENDUM TO WELL LOCATION CERTIFICATE FOR EXISTING IMPROVEMENTS WITHIN 400' OF THE WELL PAD.
- WELL FOOTAGES ARE MEASURED AT RIGHT ANGLES TO THE SECTION LINES.
- THE BOTTOM OF HOLE BEARS N03°03'47"E 4668' FROM THE SURFACE LOCATION.



SCALE: 1" = 1000'

### WELL PAD - WARDELL 4G-7HZ

WARDELL 4G-7HZ  
 WELL LOCATION CERTIFICATE  
 150' FSL & 744' FWL LOT 4 SWSW (SURFACE)  
 460' FNL & 1010' FWL LOT 1 NWNW (BOTTOM)  
 LOCATED IN SECTION 7  
 T3N, R65W, 6TH P.M.  
 WELD COUNTY, COLORADO

Kerr-McGee Oil &  
 Gas Onshore L.P.  
 1099 18th Street  
 Denver, Colorado 80202

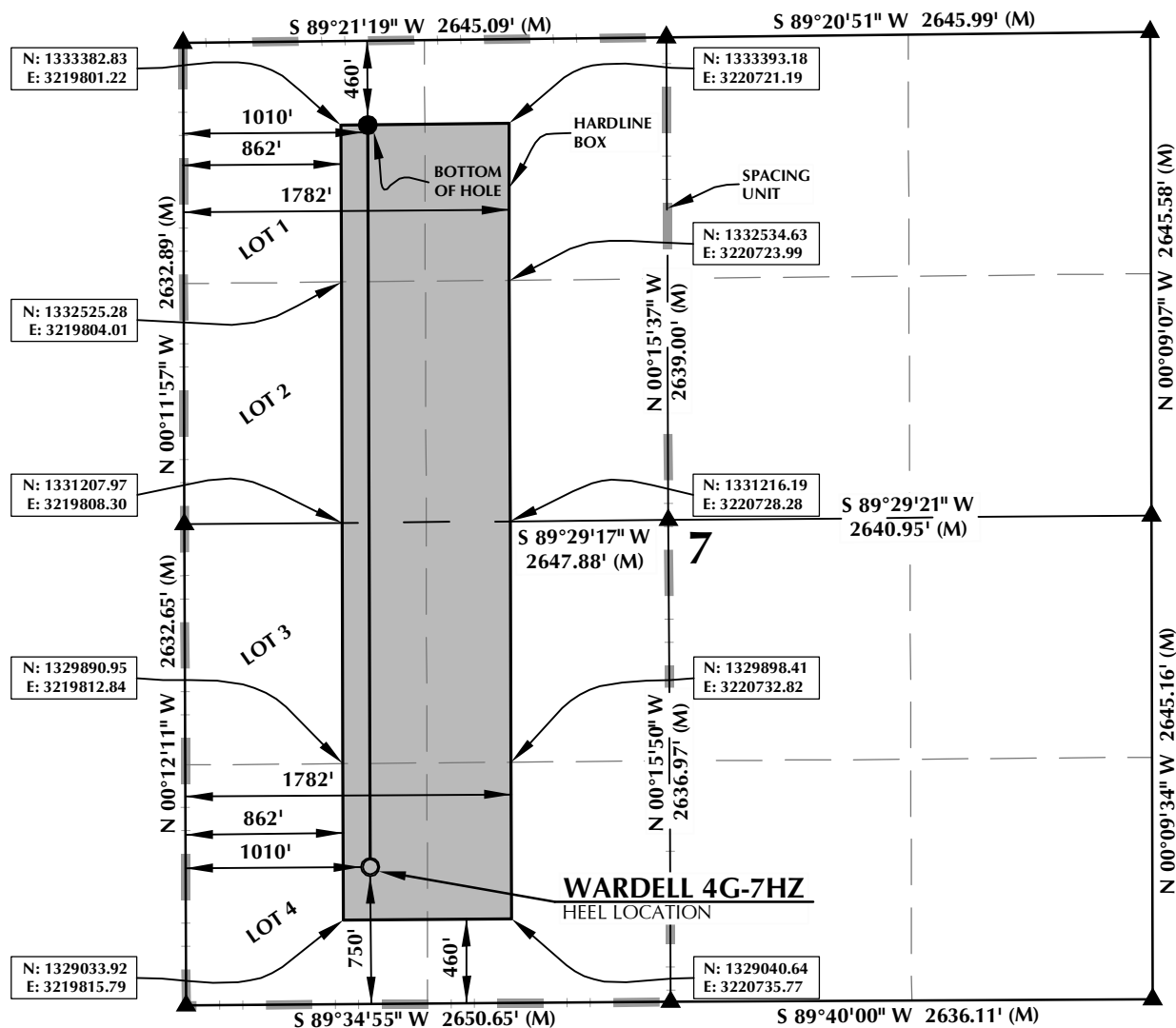


### CONSULTING, LLC

SHERIDAN OFFICE 2155 North Main Street Sheridan, Wyoming 82801 Phone 307-674-0609  
 LOVELAND OFFICE 1635 Foxtrail Drive, Suite 204 Loveland, Colorado 80538 Phone 970-776-4331

DRAFTED BY:	APF	CHECKED BY:	BJR
DATE DRAFTED:	6/14/13	DATE SURVEYED:	5/21/13
REVISED:	6/28/13	FILE NAME:	13-37

# SPACING UNIT: WARDELL 4G-7HZ T3N, R65W



## HEEL LOCATION

NAD 83

N: 1,329,325.01'  
E: 3,219,963.05'

LATITUDE= 40.234713°  
LONGITUDE= -104.712126°

LATITUDE= 40°14'04.966\"/>

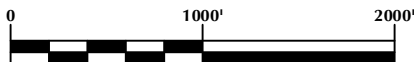
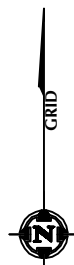
## BOTTOM HOLE LOCATION

NAD 83

N: 1,333,384.49'  
E: 3,219,948.81'

LATITUDE= 40.245856°  
LONGITUDE= -104.712048°

LATITUDE= 40°14'45.083\"/>



SCALE: 1" = 1000'

## NOTES:

1. ▲ INDICATES FOUND SECTION CORNER
2. ● INDICATES CALCULATED CORNER
3. BASIS OF BEARING DERIVED FROM COLORADO COORDINATE SYSTEM 1983 NORTH ZONE UNLESS OTHERWISE NOTED.
4. DRAWING NORTHING / EASTING COORDINATES ARE BASED ON COLORADO COORDINATE SYSTEM 1983 NORTH ZONE UNLESS OTHERWISE NOTED.
5. COMBINED SCALE FACTOR: .99972203
6. THIS EXHIBIT DOES NOT REPRESENT A LAND SURVEY PLAT OR IMPROVEMENT SURVEY PLAT AS DEFINED BY C.R.S. 38-51-102 AND CANNOT BE RELIED UPON TO DETERMINE OWNERSHIP.

## WELL PAD - WARDELL 4G-7HZ

WARDELL 4G-7HZ  
SPACING UNIT EXHIBIT  
750' FSL & 1010' FWL LOT 4 SWSW (HEEL)  
460' FNL & 1010' FWL LOT 1 NWNW (BOTTOM)  
LOCATED IN SECTION 7  
T3N, R65W, 6TH P.M.  
WELD COUNTY, COLORADO

**Kerr-McGee Oil &  
Gas Onshore L.P.**  
1099 18th Street  
Denver, Colorado 80202



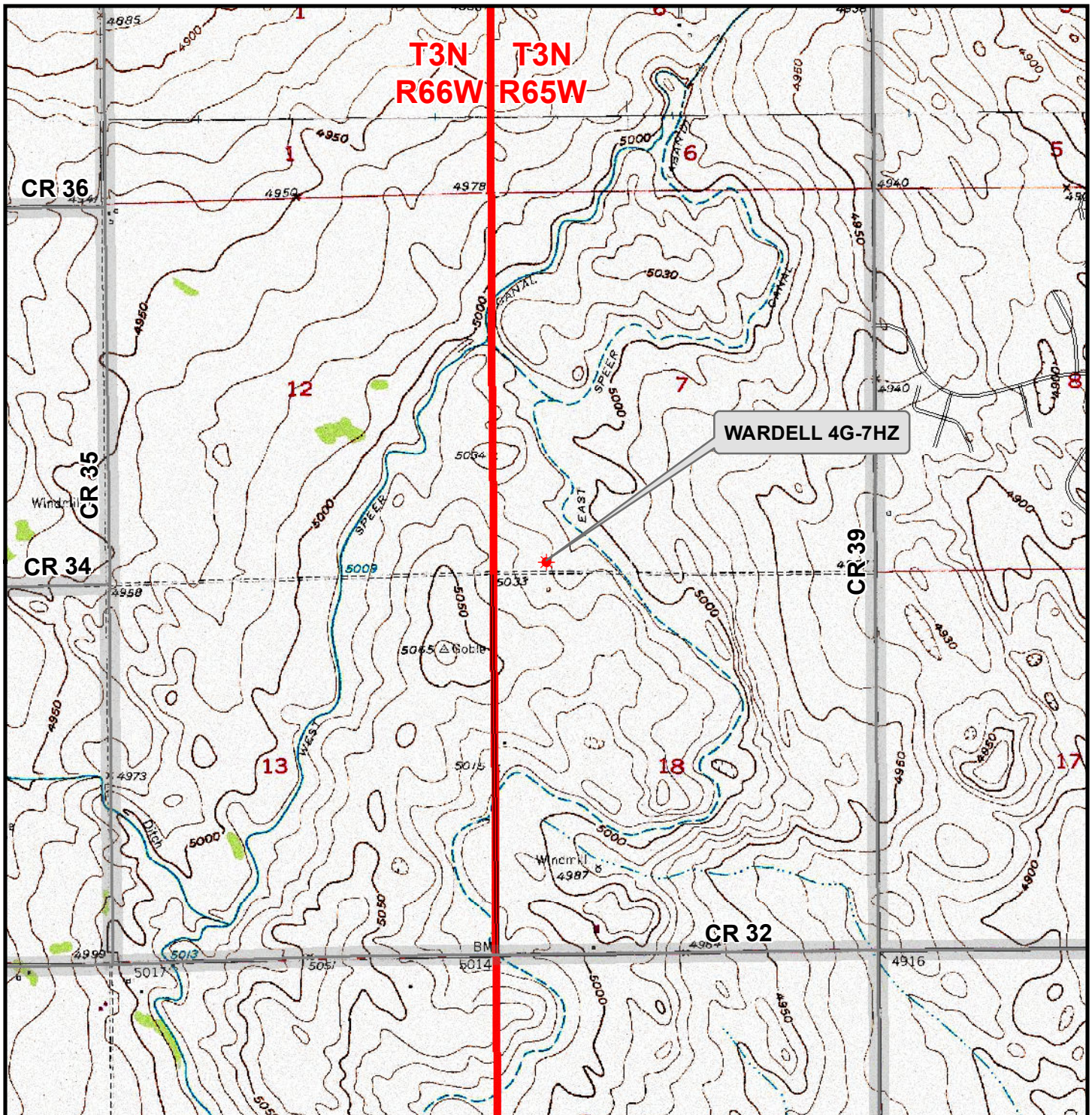
## CONSULTING, LLC

SHERIDAN OFFICE  
2155 North Main Street  
Sheridan, Wyoming 82801  
Phone 307-674-0609

LOVELAND OFFICE  
1635 Foxtrail Drive, Suite 204  
Loveland, Colorado 80538  
Phone 970-776-4331

DRAFTED BY:	APF	CHECKED BY:	BJR
DATE DRAFTED:	6/14/13	DATE SURVEYED:	5/21/13
REVISED:	6/28/13	FILE NAME:	13-37





### Legend

- ★ Well - Fee - Proposed   
  Road - Primitive - Existing   
  Road - County - Existing  
 Road - Improved - Existing   
 Road - Highway - Existing

**WELL PAD - WARDELL 4G-7HZ**

**GENERAL LOCATION MAP**

**WARDELL 4G-7HZ**

**LOCATED IN SECTION 7**

**T3N, R65W, 6th P.M.**

**WELD COUNTY, COLORADO**

**Kerr-McGee Oil &  
Gas Onshore L.P.**

**1099 18th Street  
Denver, Colorado 80202**



**CONSULTING, LLC**

**SHERIDAN OFFICE**  
2155 North Main Street  
Sheridan, Wyoming 82801  
Phone 307-674-0609

**LOVELAND OFFICE**  
1635 Foxtail Drive, Suite 204  
Loveland, Colorado 80538  
Phone 970-776-4331



**SCALE:** 1" = 2,000ft

**NAD83 CO-Nft**

**DRAWN:** JELO

**DATE:** 14 June 2013

**REVISED:** JELO

**DATE:** 28 June 2013