

Condor Energy

Well Name: **Wickstrom 18-7H**

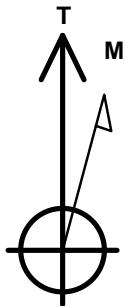
Surface Location: Wickstrom 18-2H Pad Sec.18-T6N-R60W
North American Datum 1983 , US State Plane 1983 , Colorado Northern Zone

Ground Elevation: 4700.4

+N/-S	+E/-W	Northing	Easting	Latitude	Longitude	Slot
0.0	0.0	1426015.83	3377820.40	40.494870	-104.141470	
RKB - 12.5' WELL @ 4712.9ft (RKB - 12.5')						

WELLBORE TARGET DETAILS

Name	TVD	+N/-S	+E/-W	Shape
SECTION LINE	-4.6	285.0	1541.6	Polygon
SHL 283'FNL & 1660'FWL, Sec.18	1.0	0.0	0.0	Point
HARDLINE 600' BHL	1.3	10155.3	-1188.8	Polygon
HARDLINE 600' SHL	1.3	883.6	1541.6	Polygon
BHL 660'FNI & 2469'FWL, Sec.6	6100.0	10095.3	678.4	Point
Landing Pt. 660'FSL & 2426'FWL, Sec.7	6100.0	940.0	756.5	Point



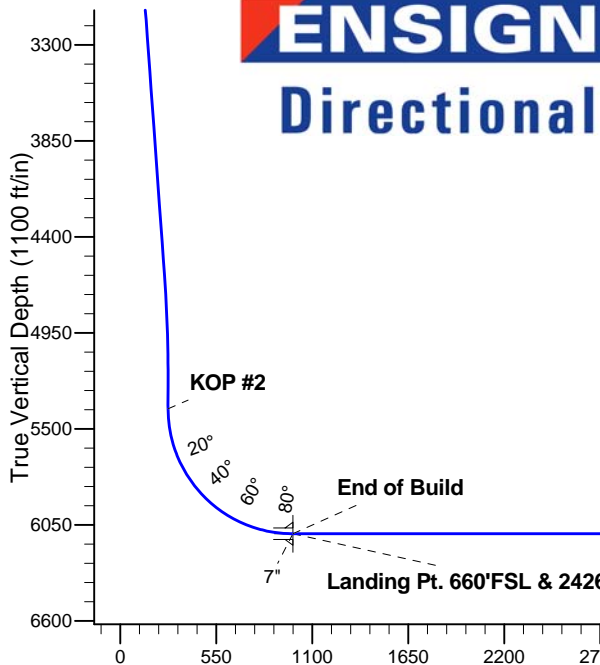
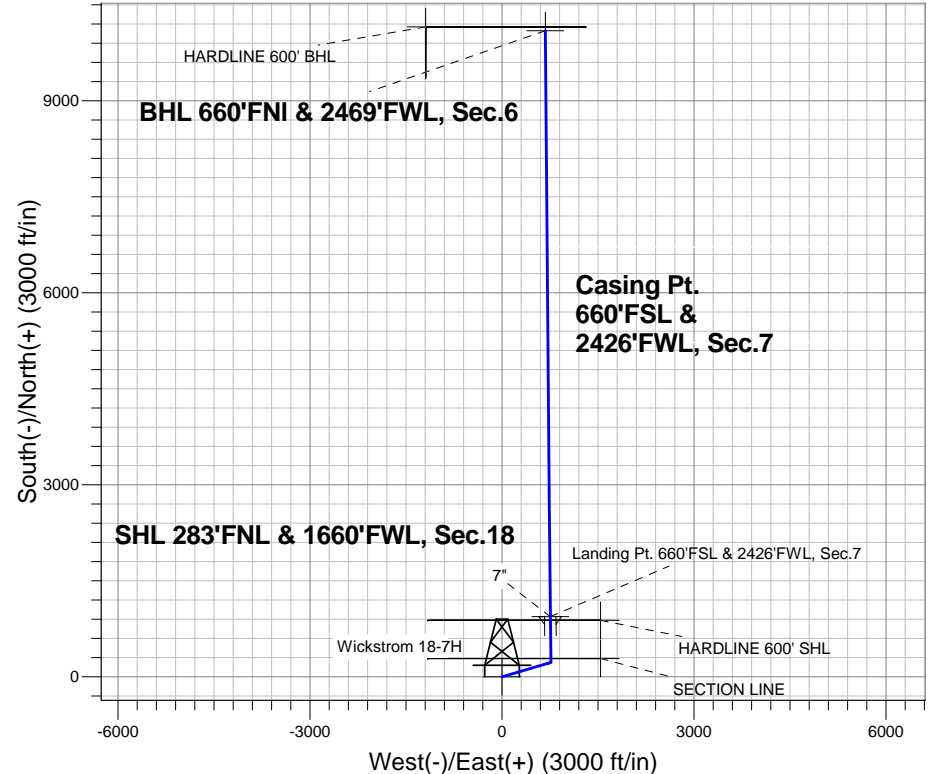
Azimuths to True North
Magnetic North: 8.25°

Magnetic Field
Strength: 53024.3snT
Dip Angle: 67.15°
Date: 7/24/2013
Model: IGRF2010

Wickstrom 18-2H Pad Sec.18-T6N-R60W
Wickstrom 18-7H
Plan #1 (7-24-13)
9:00, July 25 2013

ANNOTATIONS

TVD	MD	Annotation
800.0	800.0	KOP #1
5383.8	5462.3	KOP #2
6100.0	6588.1	End of Build



SECTION DETAILS

Sec	MD	Inc	Azi	TVD	+N/-S	+E/-W	DLeg	TFace	VSec	Target
1	0.0	0.00	0.00	0.0	0.0	0.0	0.00	0.00	0.0	
2	800.0	0.00	0.00	800.0	0.0	0.0	0.00	0.00	0.0	
3	1391.9	11.84	73.77	1387.7	17.0	58.5	2.00	73.77	20.9	
4	4686.5	11.84	73.77	4612.3	206.0	707.5	0.00	0.00	252.9	
5	5278.5	0.00	0.00	5200.0	223.0	766.0	2.00	180.00	273.9	
6	5462.3	0.00	0.00	5383.8	223.0	766.0	0.00	0.00	273.9	
7	6587.3	90.00	359.24	6100.0	939.1	756.5	8.00	359.24	987.7	
8	6588.1	90.00	359.24	6100.0	940.0	756.5	0.00	0.00	988.6	Landing Pt. 660'FSL & 2426'FWL, Sec.7
9	6601.7	90.00	359.51	6100.0	953.5	756.3	2.00	90.00	1002.1	
10	15743.8	90.00	359.51	6100.0	10095.3	678.4	0.00	0.00	10118.1	BHL 660'FNI & 2469'FWL, Sec.6

BHL 660'FNI & 2469'FWL, Sec.6

Vertical Section at 3.84° (1100 ft/in)



Condor Energy

SEC.18-T6N-R60W

Wickstrom 18-2H Pad Sec.18-T6N-R60W

Wickstrom 18-7H

Wellbore #1

Plan: Plan #1 (7-24-13)

Standard Planning Report

25 July, 2013

Database:	Landmark	Local Co-ordinate Reference:	Well Wickstrom 18-7H
Company:	Condor Energy	TVD Reference:	WELL @ 4712.9ft (RKB - 12.5')
Project:	SEC.18-T6N-R60W	MD Reference:	WELL @ 4712.9ft (RKB - 12.5')
Site:	Wickstrom 18-2H Pad Sec.18-T6N-R60W	North Reference:	True
Well:	Wickstrom 18-7H	Survey Calculation Method:	Minimum Curvature
Wellbore:	Wellbore #1		
Design:	Plan #1 (7-24-13)		

Project	SEC.18-T6N-R60W, Morgan County, CO		
Map System:	US State Plane 1983	System Datum:	Mean Sea Level
Geo Datum:	North American Datum 1983		Using Well Reference Point
Map Zone:	Colorado Northern Zone		Using geodetic scale factor

Site						Wickstrom 18-2H Pad Sec.18-T6N-R60W											
Site Position:						Northing:			1,426,014.95 ft			Latitude:			40.494870		
From:			Lat/Long			Easting:			3,377,762.01 ft			Longitude:			-104.141680		
Position Uncertainty:			0.0 ft			Slot Radius:			"			Grid Convergence:			0.88 °		

Well	Wickstrom 18-7H					
Well Position	+N-S	0.0 ft	Northing:	1,426,015.83 ft	Latitude:	40.494870
	+E-W	58.4 ft	Easting:	3,377,820.40 ft	Longitude:	-104.141470
Position Uncertainty		0.0 ft	Wellhead Elevation:	ft	Ground Level:	4,700.4 ft

Wellbore	Wellbore #1				
Magnetics	Model Name	Sample Date	Declination (°)	Dip Angle (°)	Field Strength (nT)
	IGRF2010	7/24/2013	8.25	67.15	53,024

Design	Plan #1 (7-24-13)			
Audit Notes:				
Version:	Phase:	PROTOTYPE	Tie On Depth:	0.0
Vertical Section:	Depth From (TVD) (ft)	+N/-S (ft)	+E/-W (ft)	Direction (°)
	0.0	0.0	0.0	3.84

Plan Sections										
Measured Depth (ft)	Inclination (°)	Azimuth (°)	Vertical Depth (ft)	+N/-S (ft)	+E/-W (ft)	Dogleg Rate (°/100ft)	Build Rate (°/100ft)	Turn Rate (°/100ft)	TFO (°)	Target
0.0	0.00	0.00	0.0	0.0	0.0	0.00	0.00	0.00	0.00	
800.0	0.00	0.00	800.0	0.0	0.0	0.00	0.00	0.00	0.00	
1,391.9	11.84	73.77	1,387.7	17.0	58.5	2.00	2.00	0.00	73.77	
4,686.5	11.84	73.77	4,612.3	206.0	707.5	0.00	0.00	0.00	0.00	
5,278.5	0.00	0.00	5,200.0	223.0	766.0	2.00	-2.00	0.00	180.00	
5,462.3	0.00	0.00	5,383.8	223.0	766.0	0.00	0.00	0.00	0.00	
6,587.3	90.00	359.24	6,100.0	939.1	756.5	8.00	8.00	0.00	359.24	
6,588.1	90.00	359.24	6,100.0	940.0	756.5	0.00	0.00	0.00	0.00	Landing Pt. 660'FSI
6,601.7	90.00	359.51	6,100.0	953.5	756.3	2.00	0.00	2.00	90.00	
15,743.8	90.00	359.51	6,100.0	10,095.3	678.4	0.00	0.00	0.00	0.00	BHL 660'FNI & 246'

Database:	Landmark	Local Co-ordinate Reference:	Well Wickstrom 18-7H
Company:	Condor Energy	TVD Reference:	WELL @ 4712.9ft (RKB - 12.5')
Project:	SEC.18-T6N-R60W	MD Reference:	WELL @ 4712.9ft (RKB - 12.5')
Site:	Wickstrom 18-2H Pad Sec.18-T6N-R60W	North Reference:	True
Well:	Wickstrom 18-7H	Survey Calculation Method:	Minimum Curvature
Wellbore:	Wellbore #1		
Design:	Plan #1 (7-24-13)		

Planned Survey									
Measured Depth (ft)	Inclination (°)	Azimuth (°)	Vertical Depth (ft)	+N/-S (ft)	+E/-W (ft)	Vertical Section (ft)	Dogleg Rate (°/100ft)	Build Rate (°/100ft)	Turn Rate (°/100ft)
0.0	0.00	0.00	0.0	0.0	0.0	0.0	0.00	0.00	0.00
SECTION LINE									
1.0	0.00	0.00	1.0	0.0	0.0	0.0	0.00	0.00	0.00
SHL 283'FNL & 1660'FWL, Sec.18									
1.3	0.00	0.00	1.3	0.0	0.0	0.0	0.00	0.00	0.00
HARDLINE 600' SHL									
100.0	0.00	0.00	100.0	0.0	0.0	0.0	0.00	0.00	0.00
200.0	0.00	0.00	200.0	0.0	0.0	0.0	0.00	0.00	0.00
300.0	0.00	0.00	300.0	0.0	0.0	0.0	0.00	0.00	0.00
400.0	0.00	0.00	400.0	0.0	0.0	0.0	0.00	0.00	0.00
500.0	0.00	0.00	500.0	0.0	0.0	0.0	0.00	0.00	0.00
600.0	0.00	0.00	600.0	0.0	0.0	0.0	0.00	0.00	0.00
700.0	0.00	0.00	700.0	0.0	0.0	0.0	0.00	0.00	0.00
800.0	0.00	0.00	800.0	0.0	0.0	0.0	0.00	0.00	0.00
KOP #1									
900.0	2.00	73.77	900.0	0.5	1.7	0.6	2.00	2.00	0.00
1,000.0	4.00	73.77	999.8	2.0	6.7	2.4	2.00	2.00	0.00
1,100.0	6.00	73.77	1,099.5	4.4	15.1	5.4	2.00	2.00	0.00
1,200.0	8.00	73.77	1,198.7	7.8	26.8	9.6	2.00	2.00	0.00
1,300.0	10.00	73.77	1,297.5	12.2	41.8	14.9	2.00	2.00	0.00
1,391.9	11.84	73.77	1,387.7	17.0	58.5	20.9	2.00	2.00	0.00
1,400.0	11.84	73.77	1,395.6	17.5	60.1	21.5	0.00	0.00	0.00
1,500.0	11.84	73.77	1,493.5	23.2	79.8	28.5	0.00	0.00	0.00
1,600.0	11.84	73.77	1,591.4	29.0	99.5	35.6	0.00	0.00	0.00
1,700.0	11.84	73.77	1,689.2	34.7	119.2	42.6	0.00	0.00	0.00
1,800.0	11.84	73.77	1,787.1	40.4	138.9	49.7	0.00	0.00	0.00
1,900.0	11.84	73.77	1,885.0	46.2	158.6	56.7	0.00	0.00	0.00
2,000.0	11.84	73.77	1,982.9	51.9	178.3	63.7	0.00	0.00	0.00
2,100.0	11.84	73.77	2,080.7	57.6	198.0	70.8	0.00	0.00	0.00
2,200.0	11.84	73.77	2,178.6	63.4	217.7	77.8	0.00	0.00	0.00
2,300.0	11.84	73.77	2,276.5	69.1	237.4	84.9	0.00	0.00	0.00
2,400.0	11.84	73.77	2,374.4	74.8	257.1	91.9	0.00	0.00	0.00
2,500.0	11.84	73.77	2,472.2	80.6	276.8	99.0	0.00	0.00	0.00
2,600.0	11.84	73.77	2,570.1	86.3	296.5	106.0	0.00	0.00	0.00
2,700.0	11.84	73.77	2,668.0	92.0	316.2	113.0	0.00	0.00	0.00
2,800.0	11.84	73.77	2,765.8	97.8	335.9	120.1	0.00	0.00	0.00
2,900.0	11.84	73.77	2,863.7	103.5	355.6	127.1	0.00	0.00	0.00
3,000.0	11.84	73.77	2,961.6	109.2	375.3	134.2	0.00	0.00	0.00
3,100.0	11.84	73.77	3,059.5	115.0	395.0	141.2	0.00	0.00	0.00
3,200.0	11.84	73.77	3,157.3	120.7	414.7	148.2	0.00	0.00	0.00
3,300.0	11.84	73.77	3,255.2	126.5	434.4	155.3	0.00	0.00	0.00
3,400.0	11.84	73.77	3,353.1	132.2	454.1	162.3	0.00	0.00	0.00
3,500.0	11.84	73.77	3,451.0	137.9	473.8	169.4	0.00	0.00	0.00
3,600.0	11.84	73.77	3,548.8	143.7	493.5	176.4	0.00	0.00	0.00
3,700.0	11.84	73.77	3,646.7	149.4	513.2	183.5	0.00	0.00	0.00
3,800.0	11.84	73.77	3,744.6	155.1	532.9	190.5	0.00	0.00	0.00
3,900.0	11.84	73.77	3,842.4	160.9	552.6	197.5	0.00	0.00	0.00
4,000.0	11.84	73.77	3,940.3	166.6	572.3	204.6	0.00	0.00	0.00
4,100.0	11.84	73.77	4,038.2	172.3	592.0	211.6	0.00	0.00	0.00
4,200.0	11.84	73.77	4,136.1	178.1	611.6	218.7	0.00	0.00	0.00
4,300.0	11.84	73.77	4,233.9	183.8	631.3	225.7	0.00	0.00	0.00
4,400.0	11.84	73.77	4,331.8	189.5	651.0	232.8	0.00	0.00	0.00
4,500.0	11.84	73.77	4,429.7	195.3	670.7	239.8	0.00	0.00	0.00
4,600.0	11.84	73.77	4,527.6	201.0	690.4	246.8	0.00	0.00	0.00

Database:	Landmark	Local Co-ordinate Reference:	Well Wickstrom 18-7H
Company:	Condor Energy	TVD Reference:	WELL @ 4712.9ft (RKB - 12.5')
Project:	SEC.18-T6N-R60W	MD Reference:	WELL @ 4712.9ft (RKB - 12.5')
Site:	Wickstrom 18-2H Pad Sec.18-T6N-R60W	North Reference:	True
Well:	Wickstrom 18-7H	Survey Calculation Method:	Minimum Curvature
Wellbore:	Wellbore #1		
Design:	Plan #1 (7-24-13)		

Planned Survey									
Measured Depth (ft)	Inclination (°)	Azimuth (°)	Vertical Depth (ft)	+N/-S (ft)	+E/-W (ft)	Vertical Section (ft)	Dogleg Rate (°/100ft)	Build Rate (°/100ft)	Turn Rate (°/100ft)
4,686.5	11.84	73.77	4,612.3	206.0	707.5	252.9	0.00	0.00	0.00
4,700.0	11.57	73.77	4,625.4	206.7	710.1	253.9	2.00	-2.00	0.00
4,800.0	9.57	73.77	4,723.7	211.9	727.7	260.2	2.00	-2.00	0.00
4,900.0	7.57	73.77	4,822.6	216.0	742.0	265.3	2.00	-2.00	0.00
5,000.0	5.57	73.77	4,922.0	219.2	753.0	269.2	2.00	-2.00	0.00
5,100.0	3.57	73.77	5,021.6	221.4	760.7	271.9	2.00	-2.00	0.00
5,200.0	1.57	73.77	5,121.5	222.7	765.0	273.5	2.00	-2.00	0.00
5,278.5	0.00	0.00	5,200.0	223.0	766.0	273.9	2.00	-2.00	0.00
5,300.0	0.00	0.00	5,221.5	223.0	766.0	273.9	0.00	0.00	0.00
5,400.0	0.00	0.00	5,321.5	223.0	766.0	273.9	0.00	0.00	0.00
5,462.3	0.00	0.00	5,383.8	223.0	766.0	273.9	0.00	0.00	0.00
KOP #2									
5,500.0	3.02	359.24	5,421.5	224.0	766.0	274.8	8.00	8.00	0.00
5,600.0	11.02	359.24	5,520.7	236.2	765.8	287.0	8.00	8.00	0.00
5,700.0	19.02	359.24	5,617.2	262.1	765.5	312.8	8.00	8.00	0.00
5,800.0	27.02	359.24	5,709.1	301.1	765.0	351.8	8.00	8.00	0.00
5,900.0	35.02	359.24	5,794.8	352.6	764.3	403.1	8.00	8.00	0.00
6,000.0	43.02	359.24	5,872.4	415.5	763.4	465.8	8.00	8.00	0.00
6,100.0	51.02	359.24	5,940.5	488.6	762.5	538.6	8.00	8.00	0.00
6,200.0	59.02	359.24	5,997.8	570.5	761.4	620.2	8.00	8.00	0.00
6,300.0	67.02	359.24	6,043.1	659.5	760.2	709.0	8.00	8.00	0.00
6,400.0	75.02	359.24	6,075.7	754.0	759.0	803.2	8.00	8.00	0.00
6,500.0	83.02	359.24	6,094.7	852.1	757.7	900.9	8.00	8.00	0.00
6,587.3	90.00	359.24	6,100.0	939.1	756.5	987.7	8.00	8.00	0.00
6,588.1	90.00	359.24	6,100.0	940.0	756.5	988.6	0.00	0.00	0.00
End of Build - 7" - Landing Pt. 660'FSL & 2426'FWL, Sec.7									
6,600.0	90.00	359.48	6,100.0	951.8	756.4	1,000.4	2.00	0.00	2.00
6,601.7	90.00	359.51	6,100.0	953.5	756.3	1,002.1	2.00	0.00	2.00
6,700.0	90.00	359.51	6,100.0	1,051.8	755.5	1,100.1	0.00	0.00	0.00
6,800.0	90.00	359.51	6,100.0	1,151.8	754.6	1,199.8	0.00	0.00	0.00
6,900.0	90.00	359.51	6,100.0	1,251.8	753.8	1,299.6	0.00	0.00	0.00
7,000.0	90.00	359.51	6,100.0	1,351.8	752.9	1,399.3	0.00	0.00	0.00
7,100.0	90.00	359.51	6,100.0	1,451.8	752.1	1,499.0	0.00	0.00	0.00
7,200.0	90.00	359.51	6,100.0	1,551.8	751.2	1,598.7	0.00	0.00	0.00
7,300.0	90.00	359.51	6,100.0	1,651.8	750.4	1,698.4	0.00	0.00	0.00
7,400.0	90.00	359.51	6,100.0	1,751.8	749.5	1,798.1	0.00	0.00	0.00
7,500.0	90.00	359.51	6,100.0	1,851.8	748.7	1,897.8	0.00	0.00	0.00
7,600.0	90.00	359.51	6,100.0	1,951.8	747.8	1,997.6	0.00	0.00	0.00
7,700.0	90.00	359.51	6,100.0	2,051.8	747.0	2,097.3	0.00	0.00	0.00
7,800.0	90.00	359.51	6,100.0	2,151.8	746.1	2,197.0	0.00	0.00	0.00
7,900.0	90.00	359.51	6,100.0	2,251.8	745.3	2,296.7	0.00	0.00	0.00
8,000.0	90.00	359.51	6,100.0	2,351.8	744.4	2,396.4	0.00	0.00	0.00
8,100.0	90.00	359.51	6,100.0	2,451.8	743.6	2,496.1	0.00	0.00	0.00
8,200.0	90.00	359.51	6,100.0	2,551.8	742.7	2,595.8	0.00	0.00	0.00
8,300.0	90.00	359.51	6,100.0	2,651.8	741.9	2,695.6	0.00	0.00	0.00
8,400.0	90.00	359.51	6,100.0	2,751.8	741.0	2,795.3	0.00	0.00	0.00
8,500.0	90.00	359.51	6,100.0	2,851.8	740.1	2,895.0	0.00	0.00	0.00
8,600.0	90.00	359.51	6,100.0	2,951.8	739.3	2,994.7	0.00	0.00	0.00
8,700.0	90.00	359.51	6,100.0	3,051.8	738.4	3,094.4	0.00	0.00	0.00
8,800.0	90.00	359.51	6,100.0	3,151.8	737.6	3,194.1	0.00	0.00	0.00
8,900.0	90.00	359.51	6,100.0	3,251.8	736.7	3,293.8	0.00	0.00	0.00
9,000.0	90.00	359.51	6,100.0	3,351.8	735.9	3,393.6	0.00	0.00	0.00
9,100.0	90.00	359.51	6,100.0	3,451.8	735.0	3,493.3	0.00	0.00	0.00

Database:	Landmark	Local Co-ordinate Reference:	Well Wickstrom 18-7H
Company:	Condor Energy	TVD Reference:	WELL @ 4712.9ft (RKB - 12.5')
Project:	SEC.18-T6N-R60W	MD Reference:	WELL @ 4712.9ft (RKB - 12.5')
Site:	Wickstrom 18-2H Pad Sec.18-T6N-R60W	North Reference:	True
Well:	Wickstrom 18-7H	Survey Calculation Method:	Minimum Curvature
Wellbore:	Wellbore #1		
Design:	Plan #1 (7-24-13)		

Planned Survey									
Measured Depth (ft)	Inclination (°)	Azimuth (°)	Vertical Depth (ft)	+N/-S (ft)	+E/-W (ft)	Vertical Section (ft)	Dogleg Rate (°/100ft)	Build Rate (°/100ft)	Turn Rate (°/100ft)
9,200.0	90.00	359.51	6,100.0	3,551.7	734.2	3,593.0	0.00	0.00	0.00
9,300.0	90.00	359.51	6,100.0	3,651.7	733.3	3,692.7	0.00	0.00	0.00
9,400.0	90.00	359.51	6,100.0	3,751.7	732.5	3,792.4	0.00	0.00	0.00
9,500.0	90.00	359.51	6,100.0	3,851.7	731.6	3,892.1	0.00	0.00	0.00
9,600.0	90.00	359.51	6,100.0	3,951.7	730.8	3,991.8	0.00	0.00	0.00
9,700.0	90.00	359.51	6,100.0	4,051.7	729.9	4,091.6	0.00	0.00	0.00
9,800.0	90.00	359.51	6,100.0	4,151.7	729.1	4,191.3	0.00	0.00	0.00
9,900.0	90.00	359.51	6,100.0	4,251.7	728.2	4,291.0	0.00	0.00	0.00
10,000.0	90.00	359.51	6,100.0	4,351.7	727.4	4,390.7	0.00	0.00	0.00
10,100.0	90.00	359.51	6,100.0	4,451.7	726.5	4,490.4	0.00	0.00	0.00
10,200.0	90.00	359.51	6,100.0	4,551.7	725.6	4,590.1	0.00	0.00	0.00
10,300.0	90.00	359.51	6,100.0	4,651.7	724.8	4,689.8	0.00	0.00	0.00
10,400.0	90.00	359.51	6,100.0	4,751.7	723.9	4,789.5	0.00	0.00	0.00
10,500.0	90.00	359.51	6,100.0	4,851.7	723.1	4,889.3	0.00	0.00	0.00
10,600.0	90.00	359.51	6,100.0	4,951.7	722.2	4,989.0	0.00	0.00	0.00
10,700.0	90.00	359.51	6,100.0	5,051.7	721.4	5,088.7	0.00	0.00	0.00
10,800.0	90.00	359.51	6,100.0	5,151.7	720.5	5,188.4	0.00	0.00	0.00
10,900.0	90.00	359.51	6,100.0	5,251.7	719.7	5,288.1	0.00	0.00	0.00
11,000.0	90.00	359.51	6,100.0	5,351.7	718.8	5,387.8	0.00	0.00	0.00
11,100.0	90.00	359.51	6,100.0	5,451.7	718.0	5,487.5	0.00	0.00	0.00
11,200.0	90.00	359.51	6,100.0	5,551.7	717.1	5,587.3	0.00	0.00	0.00
11,300.0	90.00	359.51	6,100.0	5,651.7	716.3	5,687.0	0.00	0.00	0.00
11,400.0	90.00	359.51	6,100.0	5,751.7	715.4	5,786.7	0.00	0.00	0.00
11,500.0	90.00	359.51	6,100.0	5,851.7	714.6	5,886.4	0.00	0.00	0.00
11,600.0	90.00	359.51	6,100.0	5,951.7	713.7	5,986.1	0.00	0.00	0.00
11,700.0	90.00	359.51	6,100.0	6,051.7	712.9	6,085.8	0.00	0.00	0.00
11,800.0	90.00	359.51	6,100.0	6,151.7	712.0	6,185.5	0.00	0.00	0.00
11,900.0	90.00	359.51	6,100.0	6,251.7	711.1	6,285.3	0.00	0.00	0.00
12,000.0	90.00	359.51	6,100.0	6,351.6	710.3	6,385.0	0.00	0.00	0.00
12,100.0	90.00	359.51	6,100.0	6,451.6	709.4	6,484.7	0.00	0.00	0.00
12,200.0	90.00	359.51	6,100.0	6,551.6	708.6	6,584.4	0.00	0.00	0.00
12,300.0	90.00	359.51	6,100.0	6,651.6	707.7	6,684.1	0.00	0.00	0.00
12,400.0	90.00	359.51	6,100.0	6,751.6	706.9	6,783.8	0.00	0.00	0.00
12,500.0	90.00	359.51	6,100.0	6,851.6	706.0	6,883.5	0.00	0.00	0.00
12,600.0	90.00	359.51	6,100.0	6,951.6	705.2	6,983.3	0.00	0.00	0.00
12,700.0	90.00	359.51	6,100.0	7,051.6	704.3	7,083.0	0.00	0.00	0.00
12,800.0	90.00	359.51	6,100.0	7,151.6	703.5	7,182.7	0.00	0.00	0.00
12,900.0	90.00	359.51	6,100.0	7,251.6	702.6	7,282.4	0.00	0.00	0.00
13,000.0	90.00	359.51	6,100.0	7,351.6	701.8	7,382.1	0.00	0.00	0.00
13,100.0	90.00	359.51	6,100.0	7,451.6	700.9	7,481.8	0.00	0.00	0.00
13,200.0	90.00	359.51	6,100.0	7,551.6	700.1	7,581.5	0.00	0.00	0.00
13,300.0	90.00	359.51	6,100.0	7,651.6	699.2	7,681.3	0.00	0.00	0.00
13,400.0	90.00	359.51	6,100.0	7,751.6	698.4	7,781.0	0.00	0.00	0.00
13,500.0	90.00	359.51	6,100.0	7,851.6	697.5	7,880.7	0.00	0.00	0.00
13,600.0	90.00	359.51	6,100.0	7,951.6	696.6	7,980.4	0.00	0.00	0.00
13,700.0	90.00	359.51	6,100.0	8,051.6	695.8	8,080.1	0.00	0.00	0.00
13,800.0	90.00	359.51	6,100.0	8,151.6	694.9	8,179.8	0.00	0.00	0.00
13,900.0	90.00	359.51	6,100.0	8,251.6	694.1	8,279.5	0.00	0.00	0.00
14,000.0	90.00	359.51	6,100.0	8,351.6	693.2	8,379.3	0.00	0.00	0.00
14,100.0	90.00	359.51	6,100.0	8,451.6	692.4	8,479.0	0.00	0.00	0.00
14,200.0	90.00	359.51	6,100.0	8,551.6	691.5	8,578.7	0.00	0.00	0.00
14,300.0	90.00	359.51	6,100.0	8,651.6	690.7	8,678.4	0.00	0.00	0.00
14,400.0	90.00	359.51	6,100.0	8,751.6	689.8	8,778.1	0.00	0.00	0.00
14,500.0	90.00	359.51	6,100.0	8,851.6	689.0	8,877.8	0.00	0.00	0.00

Database:	Landmark	Local Co-ordinate Reference:	Well Wickstrom 18-7H
Company:	Condor Energy	TVD Reference:	WELL @ 4712.9ft (RKB - 12.5')
Project:	SEC.18-T6N-R60W	MD Reference:	WELL @ 4712.9ft (RKB - 12.5')
Site:	Wickstrom 18-2H Pad Sec.18-T6N-R60W	North Reference:	True
Well:	Wickstrom 18-7H	Survey Calculation Method:	Minimum Curvature
Wellbore:	Wellbore #1		
Design:	Plan #1 (7-24-13)		

Planned Survey										
Measured Depth (ft)	Inclination (°)	Azimuth (°)	Vertical Depth (ft)	+N/-S (ft)	+E/-W (ft)	Vertical Section (ft)	Dogleg Rate (°/100ft)	Build Rate (°/100ft)	Turn Rate (°/100ft)	
14,600.0	90.00	359.51	6,100.0	8,951.6	688.1	8,977.5	0.00	0.00	0.00	
14,700.0	90.00	359.51	6,100.0	9,051.5	687.3	9,077.3	0.00	0.00	0.00	
14,800.0	90.00	359.51	6,100.0	9,151.5	686.4	9,177.0	0.00	0.00	0.00	
14,900.0	90.00	359.51	6,100.0	9,251.5	685.6	9,276.7	0.00	0.00	0.00	
15,000.0	90.00	359.51	6,100.0	9,351.5	684.7	9,376.4	0.00	0.00	0.00	
15,100.0	90.00	359.51	6,100.0	9,451.5	683.9	9,476.1	0.00	0.00	0.00	
15,200.0	90.00	359.51	6,100.0	9,551.5	683.0	9,575.8	0.00	0.00	0.00	
15,300.0	90.00	359.51	6,100.0	9,651.5	682.1	9,675.5	0.00	0.00	0.00	
15,400.0	90.00	359.51	6,100.0	9,751.5	681.3	9,775.3	0.00	0.00	0.00	
15,500.0	90.00	359.51	6,100.0	9,851.5	680.4	9,875.0	0.00	0.00	0.00	
15,600.0	90.00	359.51	6,100.0	9,951.5	679.6	9,974.7	0.00	0.00	0.00	
15,700.0	90.00	359.51	6,100.0	10,051.5	678.7	10,074.4	0.00	0.00	0.00	
15,743.8	90.00	359.51	6,100.0	10,095.3	678.4	10,118.1	0.00	0.00	0.00	
HARDLINE 600' BHL - BHL 660'FNI & 2469'FWL, Sec.6										

Casing Points					
Measured Depth (ft)	Vertical Depth (ft)	Name	Casing Diameter (")	Hole Diameter (")	
6,588.1	6,100.0	7"	7	7-1/2	

Plan Annotations					
Measured Depth (ft)	Vertical Depth (ft)	Local Coordinates			
		+N/-S (ft)	+E/-W (ft)	Comment	
800.0	800.0	0.0	0.0	KOP #1	
5,462.3	5,383.8	223.0	766.0	KOP #2	
6,588.1	6,100.0	939.9	756.5	End of Build	