

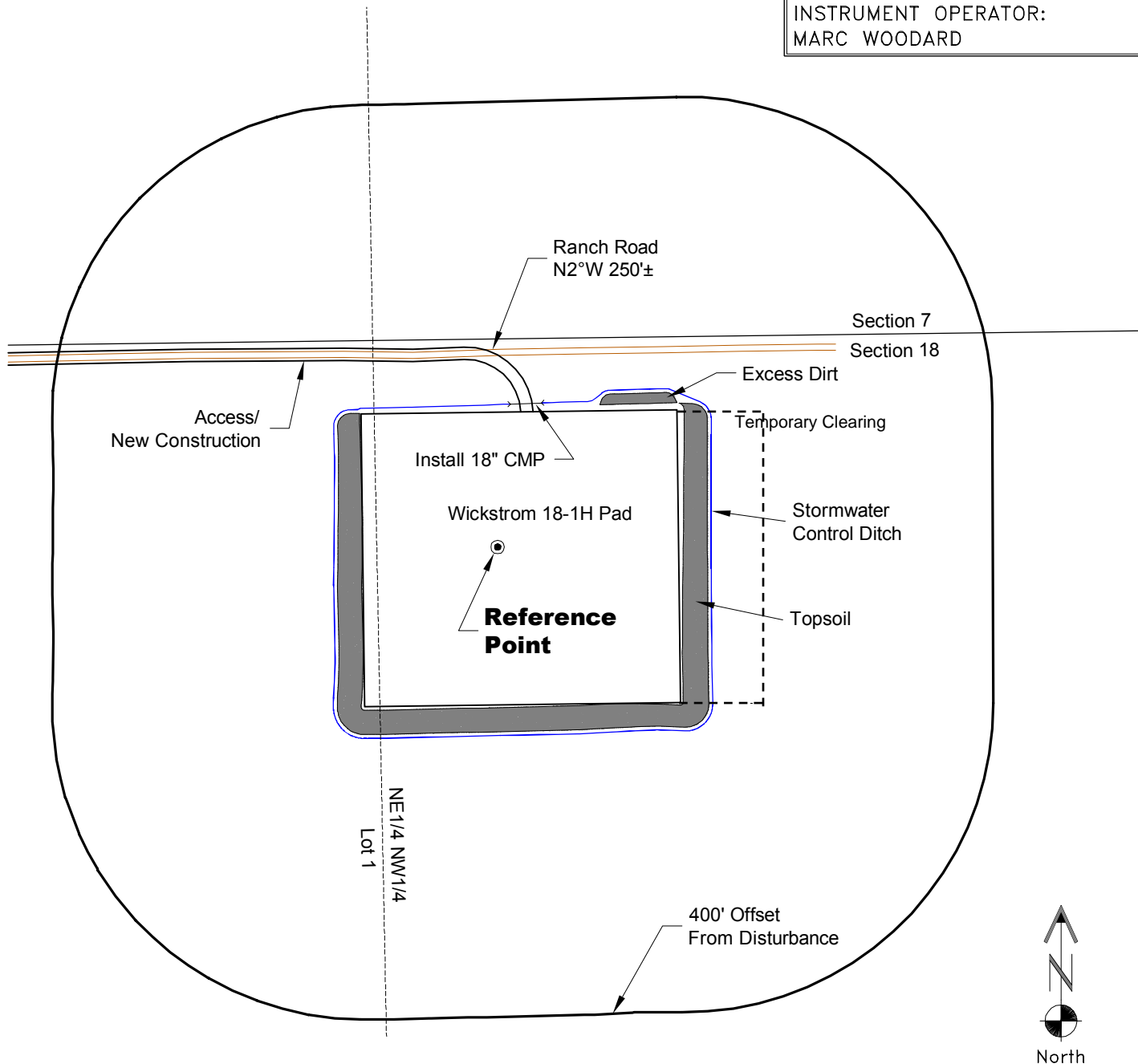
LOCATION DRAWING

VEGETATION:
STUBBLE

SURFACE USE:
AGRICULTURAL

REFERENCE POINT

LATITUDE: 40.49491
LONGITUDE: -104.14168
FOOTAGE: 270 FNL 1600 FWL
GROUND ELEVATION: 4700.1
PDOP: 2.2 DATE: 2/15/2013
INSTRUMENT OPERATOR: MARC WOODARD

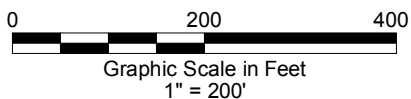


NOTE-DISTANCE TO NEAREST:
Property Line - N 270'±
Public Road - MCR 0 - W 1590'±
Building - House N0°E 10,600'±
Railroad - S15°E 18 Miles±
Powerline - S0°E 4,650'±

DISTURBANCE ACREAGE:
5.1± DRILLING OPERATIONS

NOTE:
ALL PRODUCTION FACILITIES WILL BE ON PAD.

7/23/13



GEO SURV

LAND SURVEYING AND MAPPING
LAFAYETTE - WINTER PARK
Ph 303 666 0379 Fx 303 665 6320

CONDOR ENERGY TECHNOLOGY LLC
WICKSTROM 18-1H PAD

NE1/4 NW1/4 SECTION 18 T6N R60W
6th PM MORGAN COUNTY COLORADO