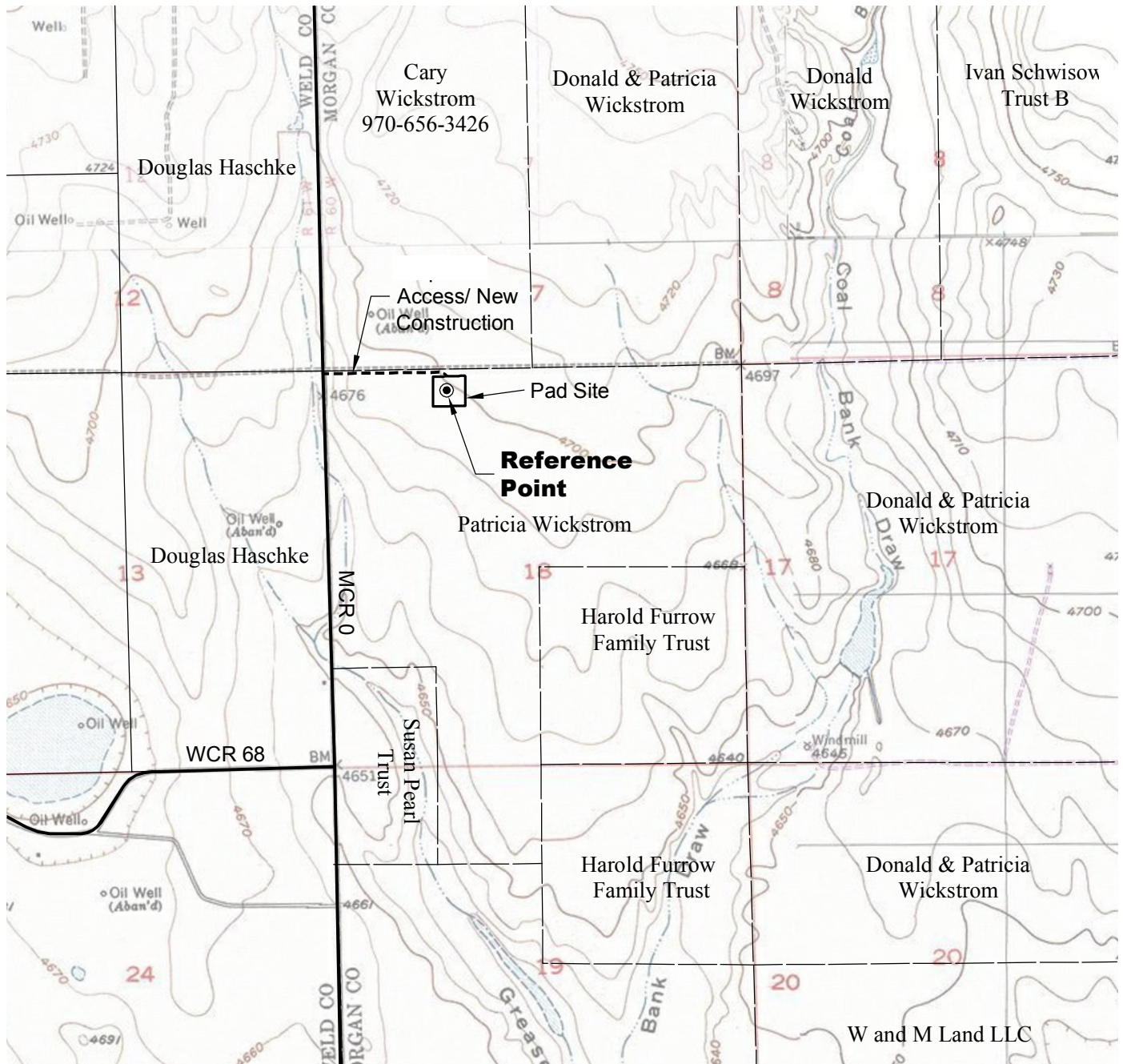


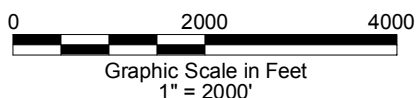
# ACCESS ROAD MAP



## DRIVING DIRECTIONS:

From Town of Orchard, beginning at intersection of Washington Ave & MCR X; East on MCR X  
 MP 0.2 Left on MCR 2  
 MP 13.3 Left on MCR Kk also known as WCR 74  
 MP 15.3 Left on MCR 0 also know as WCR 97  
 MP 17.3 Left on access to Wickstrom 18-1H pad  
 MP 17.6 Wickstrom 18-1H pad

7/23/13



**GEO SURV**

LAND SURVEYING AND MAPPING  
 LAFAYETTE - WINTER PARK  
 Ph 303 666 0379 Fx 303 665 6320

**CONDOR ENERGY TECHNOLOGY LLC**  
**WICKSTROM 18-1H PAD**

**NE1/4 NW1/4 SECTION 18 T6N R60W**  
**6th PM MORGAN COUNTY COLORADO**