

# WELL LOCATION MAP

WICKSTROM 17-1H PAD

07/08  
18/17  
Alum. Cap  
PLS 22097

N 89°29'30" E 5281.07'

08/09  
17/16  
Alum. Cap  
PLS 22097

N 01°17'01" W 5257.60'

17

S 01°12'53" E 5264.88'

## Wickstrom 17-6H

Surface Location  
250 FSL 1799 FWL  
Ground Elev 4670.7  
Pad Elev 4670.1  
LAT:40.48184  
LON:-104.12134

18/17  
19/20  
Alum. Cap  
PLS 22097

S 50°02'29" E 1404.43'  
(True N (S 49°09'02" E))

S 89°34'17" W 5274.86'

## Landing Point

Surface Location  
660 FNL 2419 FEL  
LAT:40.47931  
LON:-104.11752

17/16  
20/21  
Alum. Cap  
PLS 7735

### NOTES

### SURVEYOR'S STATEMENT

The undersigned hereby states that the well location shown hereon was staked on the ground based on existing monumentation and/or physical evidence found in the field and is correct to the best of my knowledge, information and belief.



North

- 1.) Horizontal (NAD 83) and vertical (NAVD 88) datum is based on the Leica Geosystems SmartNet of Colorado.
- 2.) All directions, distances, and dimensions shown hereon are based on coordinates from the "Colorado coordinate system of 1983 north zone" (article 52 of title 38, C.R.S.).
- 3.) All section line dimensions shown hereon are based on field measurements of existing monuments and/or physical evidence found in the field unless otherwise indicated.
- 4.) Physical features shown hereon are for graphical representation only.
- 5.) See Form 2A for visible improvements within 400' of wellhead.
- 6.) Distances to nearest section lines are measured perpendicularly.
- 7.) This is not a land survey nor land survey plat.
- 8.) Date of Survey 1/23/13; Date of Drawing 7/22/13. REV 0

PDOP Reading: 2.2 Instrument Operator: Marc Woodard

0 1000 2000  
Graphic Scale in Feet  
1" = 1000'

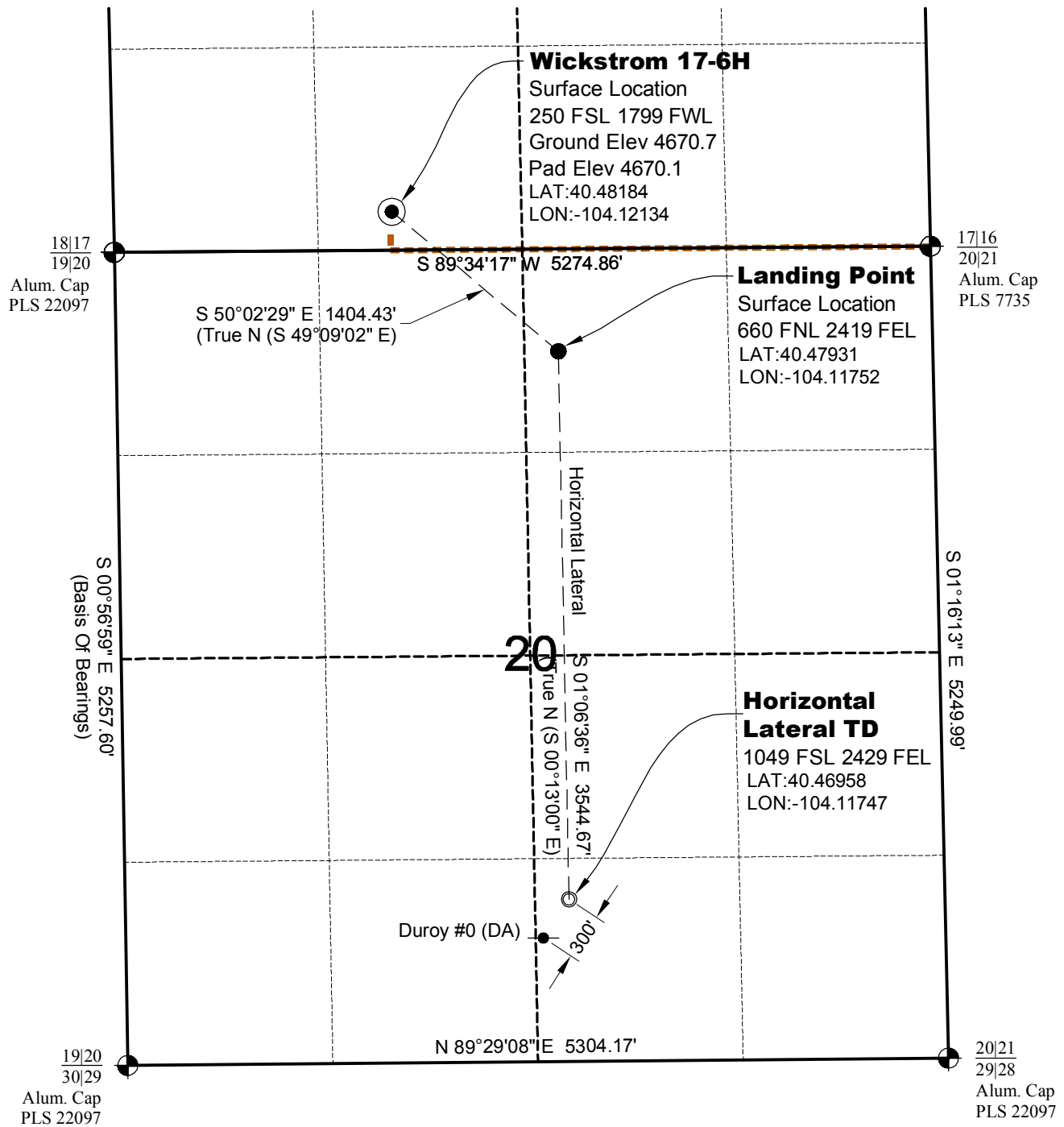
**GEO SURV**  
LAND SURVEYING AND MAPPING  
LAFAYETTE - WINTER PARK  
Ph 303 666 0379 Fx 303 665 6320

**CONDOR ENERGY TECHNOLOGY LLC**  
WICKSTROM 17-6H

SL SE1/4 SW1/4 SEC. 17 T6N R6W  
HL TD SW1/4 SE1/4 SEC. 20 T6N R6W  
6th PM MORGAN COUNTY COLORADO

# HORIZONTAL LATERAL TD MAP

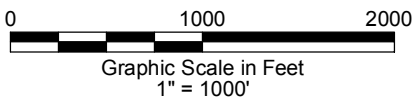
WICKSTROM 17-1H PAD



● Location Per COGCC. Not field located.



North



LAND SURVEYING AND MAPPING  
LAFAYETTE - WINTER PARK  
Ph 303 666 0379 Fx 303 665 6320

CONDOR ENERGY TECHNOLOGY LLC  
WICKSTROM 17-6H

SL SE1/4 SW1/4 SEC. 17 T6N R60W  
HL TD SW1/4 SE1/4 SEC. 20 T6N R60W  
6th PM MORGAN COUNTY COLORADO