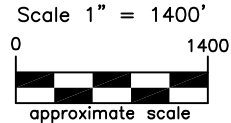
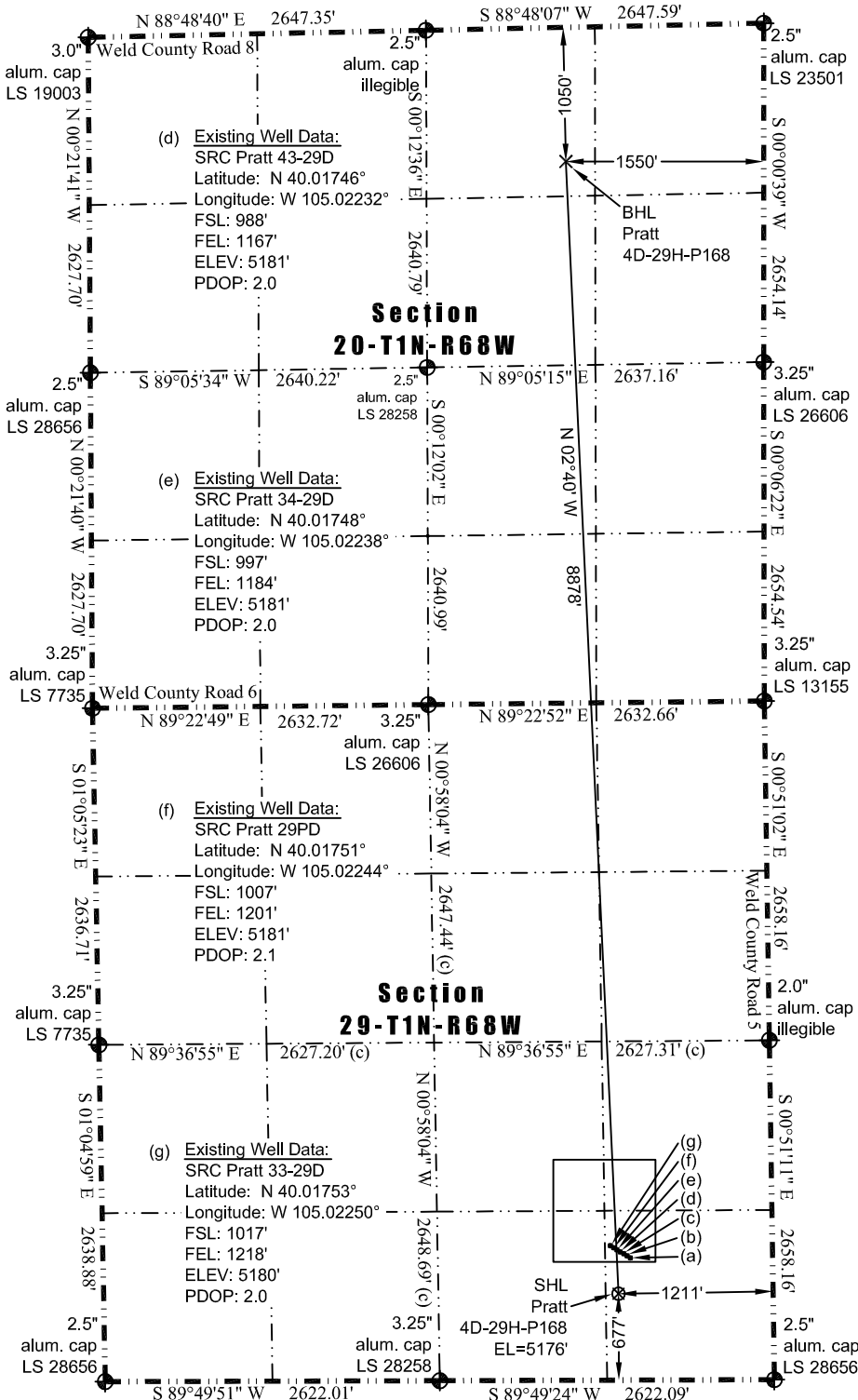


**JR Land Surveying, LLC**

8114 Northstar Drive  
Windsor, Colorado 80528  
P. 970-576-4641

**WELL LOCATION CERTIFICATE**

*THIS MAP DOES NOT REPRESENT A BOUNDARY SURVEY*

**LEGEND**

- Found survey monument
- Calculated dimension

(a) **Existing Well Data:**  
SRC Pratt 29TD  
Latitude: N 40.01737°  
Longitude: W 105.02213°  
FSL: 957'  
FEL: 1116'  
ELEV: 5181'  
PDOP: 2.0

(b) **Existing Well Data:**  
SRC Pratt 29XD  
Latitude: N 40.01740°  
Longitude: W 105.02220°  
FSL: 969'  
FEL: 1134'  
ELEV: 5181'  
PDOP: 2.0

(c) **Existing Well Data:**  
Pratt 29-3  
Latitude: N 40.01743°  
Longitude: W 105.02227°  
FSL: 980'  
FEL: 1155'  
ELEV: 5180'  
PDOP: 2.0

**Nearest:**  
Building: 774' south  
Above Ground Utility: 4,653' north  
Public Road: 1,201' east  
Railroad: 11,779' northwest  
Property Line: 677' south  
Well Window: SHL is 249' outside  
Existing Well: SRC Pratt 29TD,  
295' northeast

**Proposed Surface Hole Data:**

Latitude: N 40.01660° (BHL: 40.04095°)  
Longitude: W 105.02246° (BHL: 105.02376°)  
PDOP: 1.9

I hereby certify that this Well Location Certificate was prepared by me or under my direct supervision on 4/4/2013 for and on behalf of EnCana Oil & Gas (USA) Inc. That it is not a Land Survey Plat or an Improvement Survey Plat and that it is not to be relied upon for establishment of fences, buildings, or other future improvement lines.

John Robert McGehee LS#38219  
Well: Pratt 4D-29H-P168 WLC